

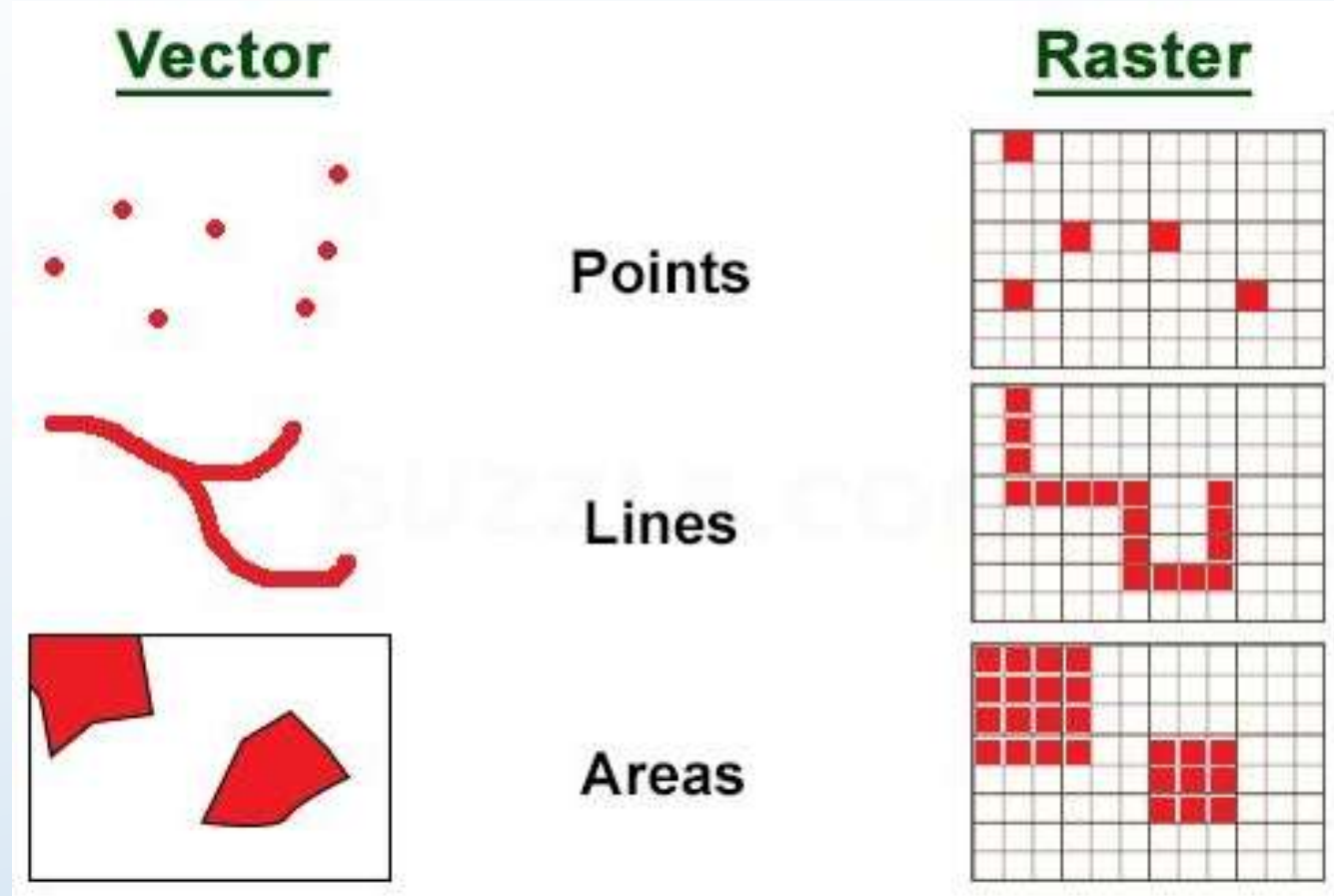
## Coğrafi Bilgi Sistemleri

- Coğrafi verilerin (mekan/konum bilgisi içeren verilerin) toplanması/üretilmesi, işlenmesi, sorgulanması, analizi ve sunumunu gerçekleştiren donanım ve yazılımların bütünüdür.



## Vektör Veri Biçimleri

- Nokta (point)
- Çizgi (Polyline)
- Alan/poligon (Region)

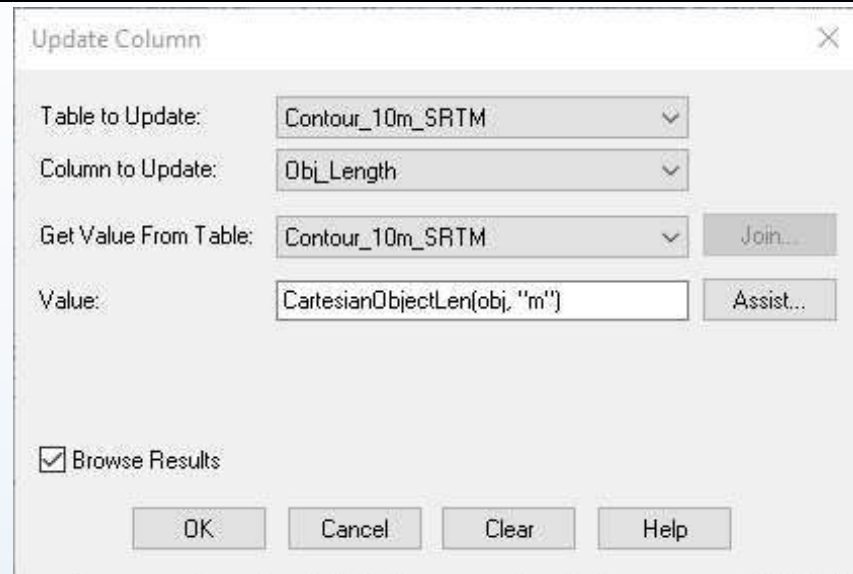
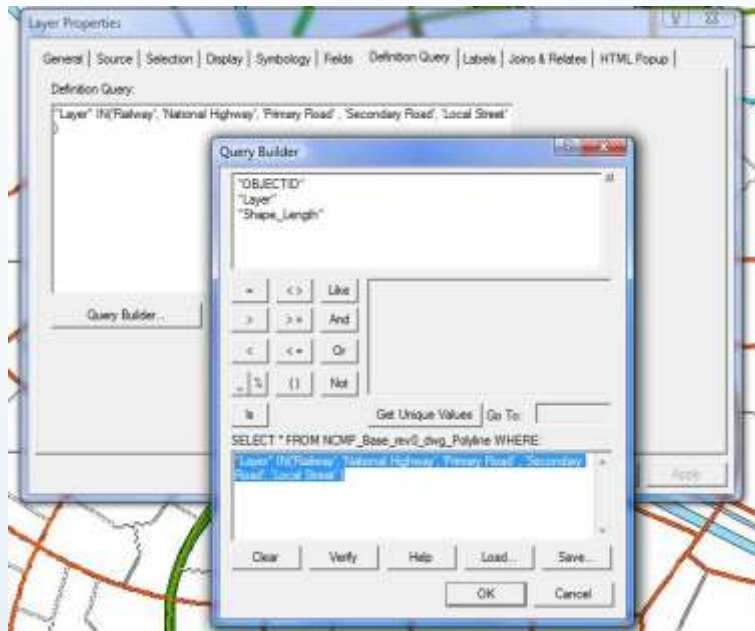


## CBS (GIS) Programları

- ArcGIS
- Mapinfo Professional
- QGIS
- GRASS GIS
- Global Mapper
- SAGA GIS



## Sorgulamalar



totn **Tech ON THE Net**  
Your trusted resource since 2001

**HOW-TO TUTORIAL**

```
1: SELECT *
2: FROM customers
3: WHERE favorite_website = 'techonthenet.com'
4: ORDER BY last_name ASC;
```

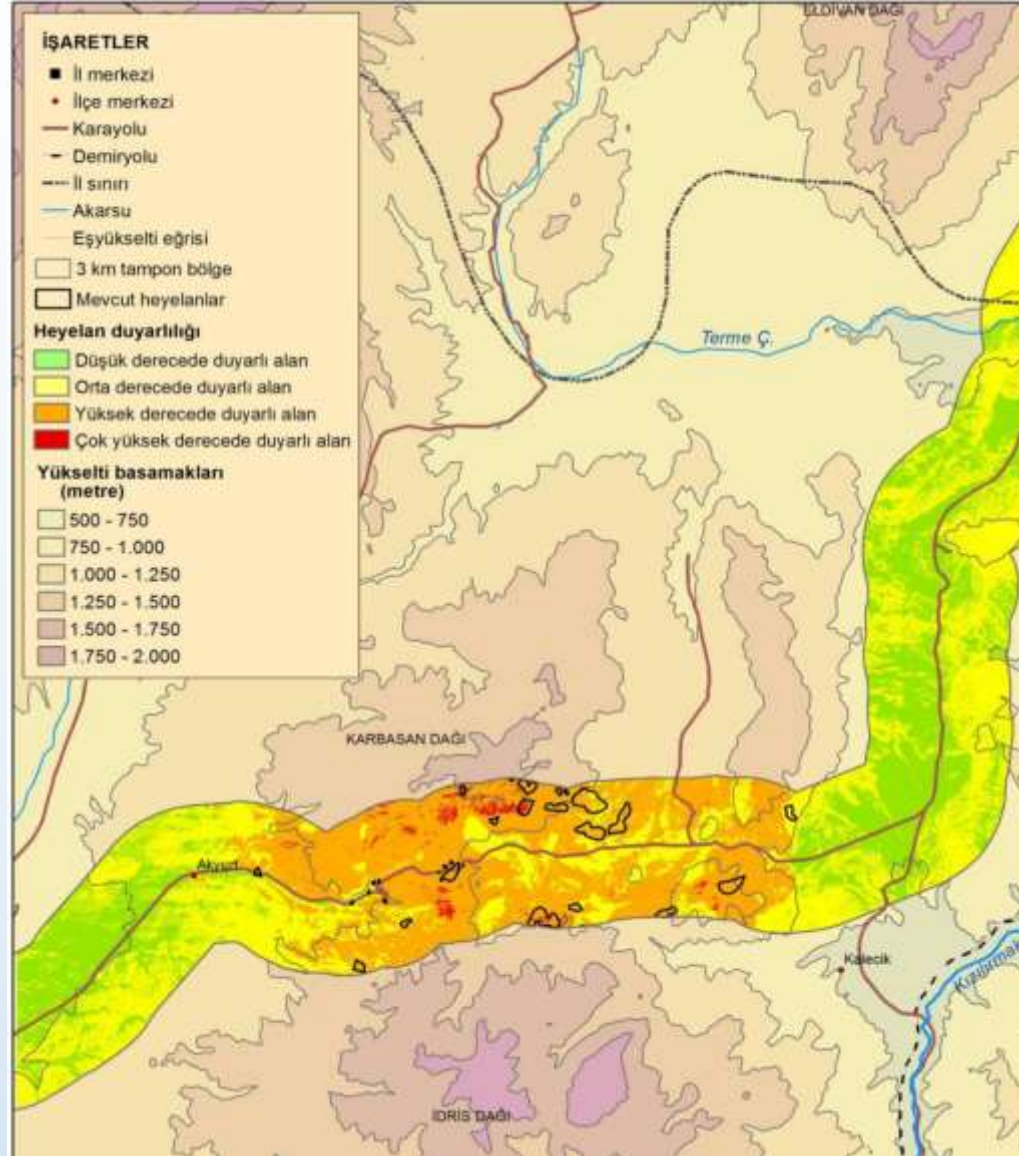
customer_id	last_name	first_name	favorite_website
4000	Jackson	Joe	techonthenet.com
9000	Johnson	Derek	techonthenet.com

**SQL SELECT**

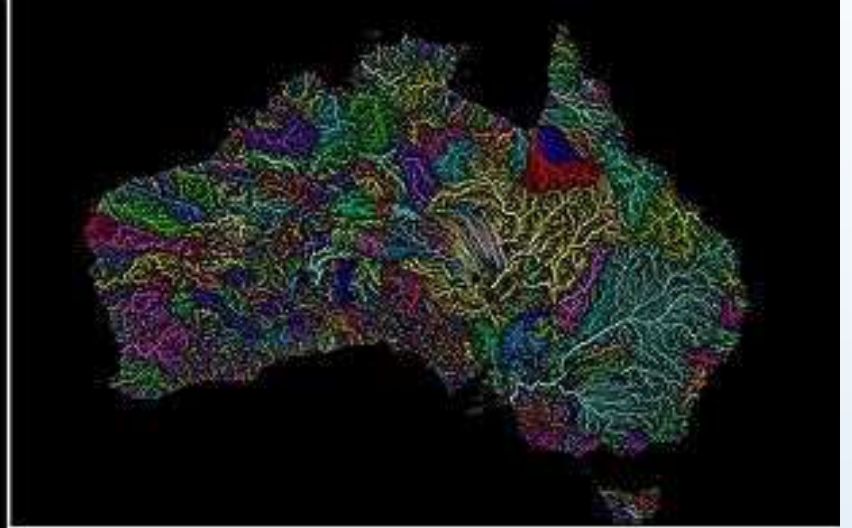


## Analizler

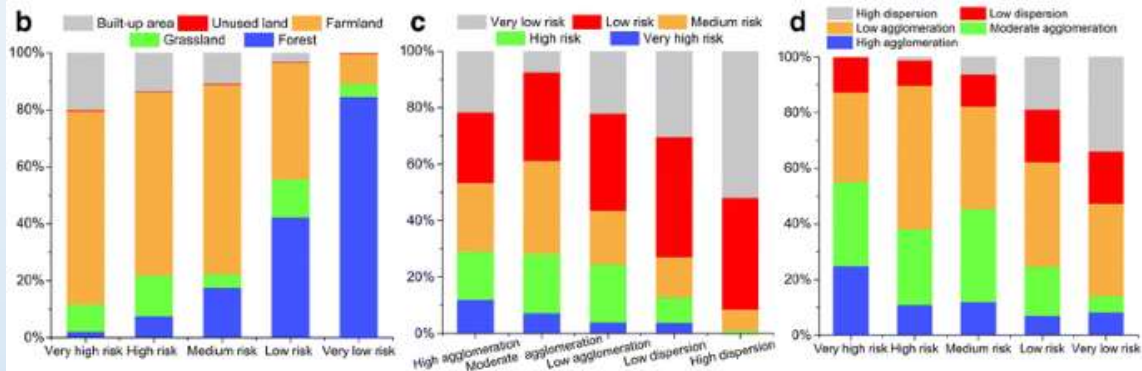
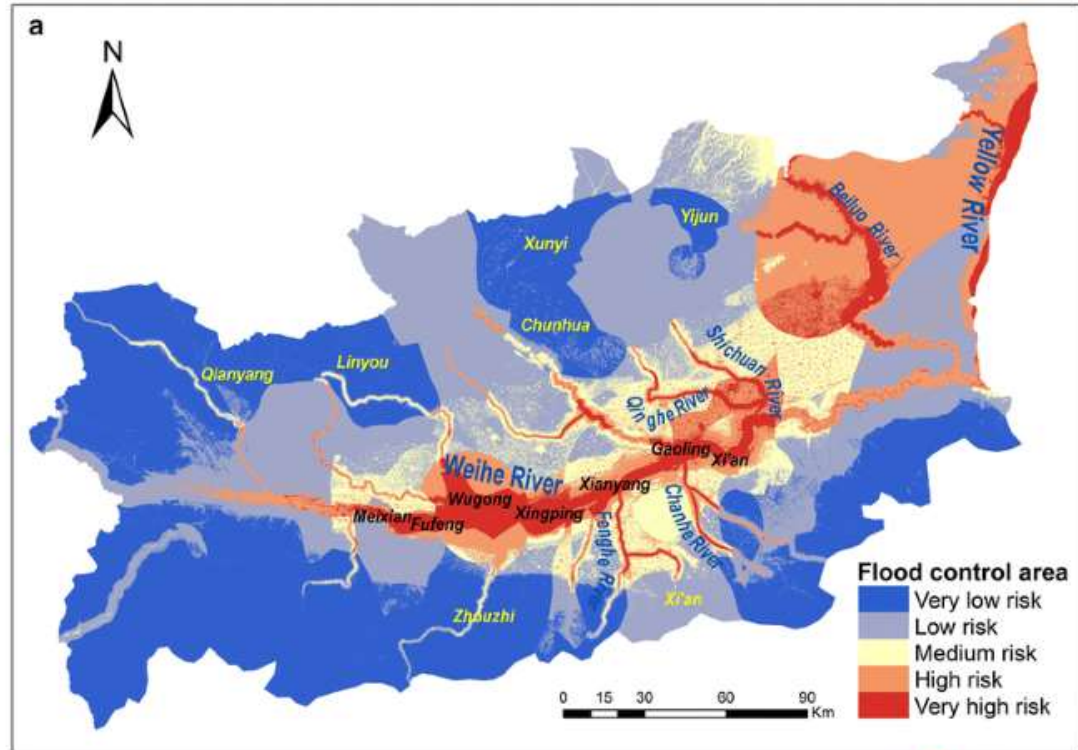
Analizler  
vasıtasıyla yeni  
ürün ve çıktılar  
üretilebilir.



# Coğrafi Bilgi Sistemleri ve Uzaktan Algılama

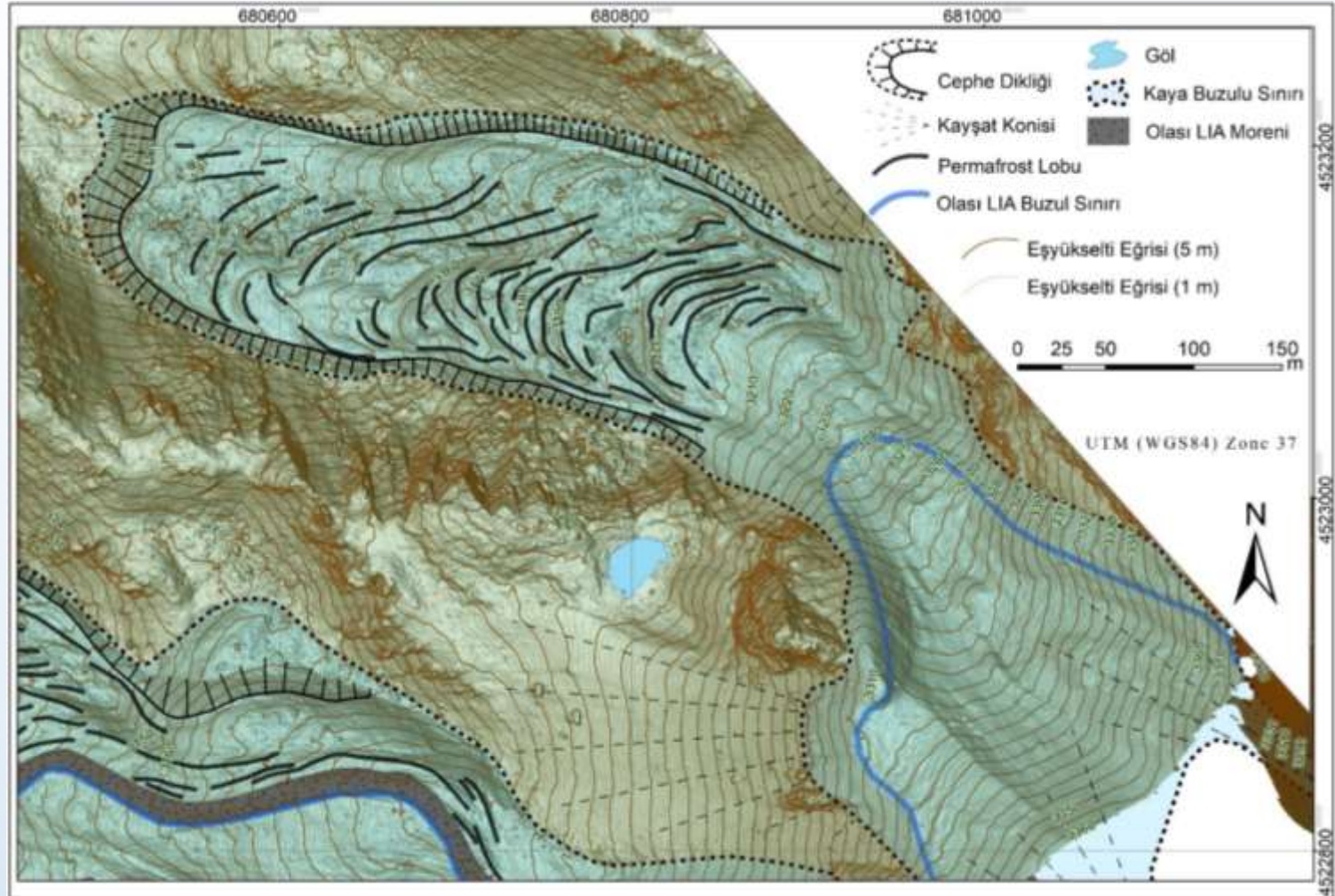


# Coğrafi Bilgi Sistemleri ve Uzaktan Algılama



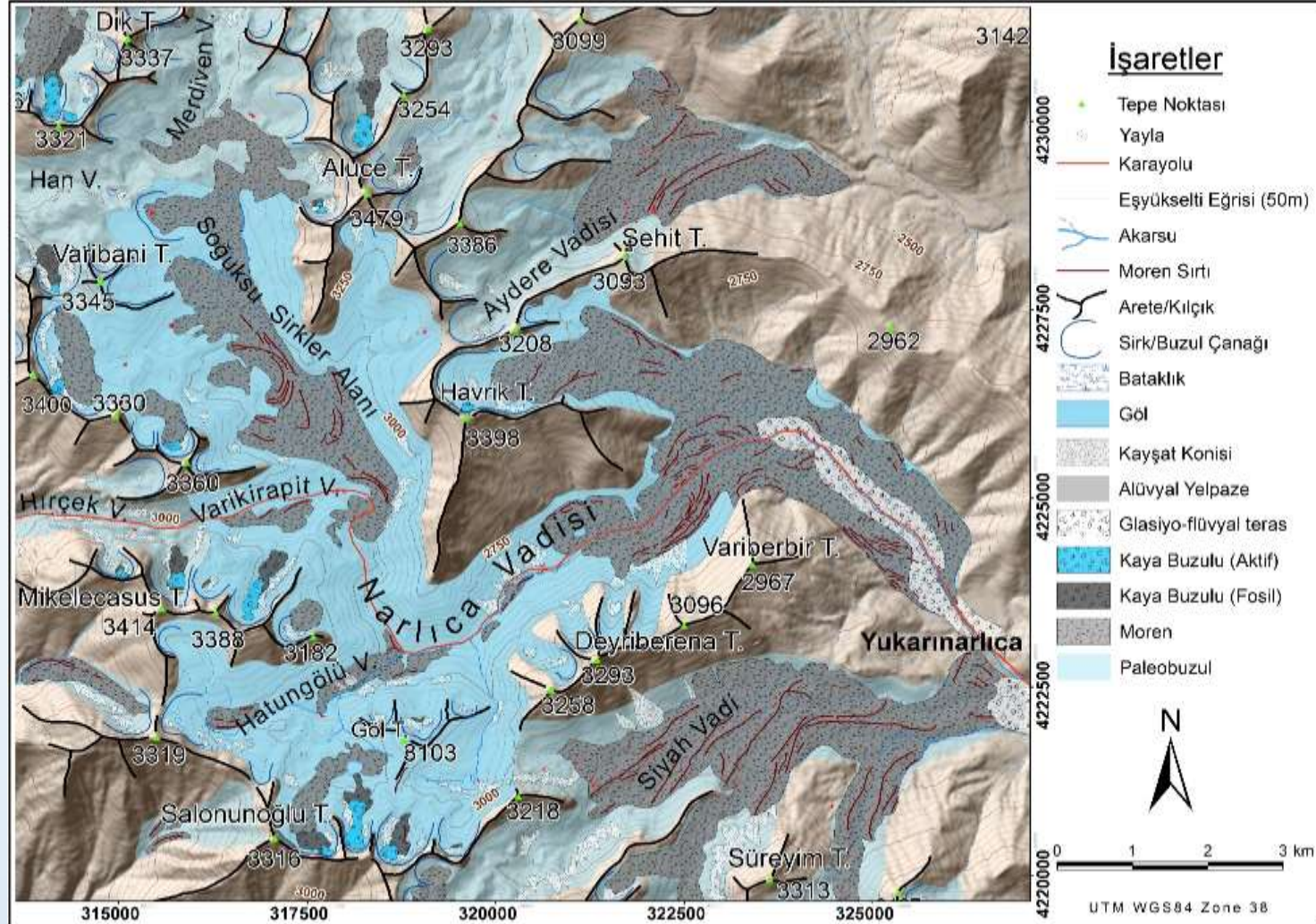


## Altlık/Sunum

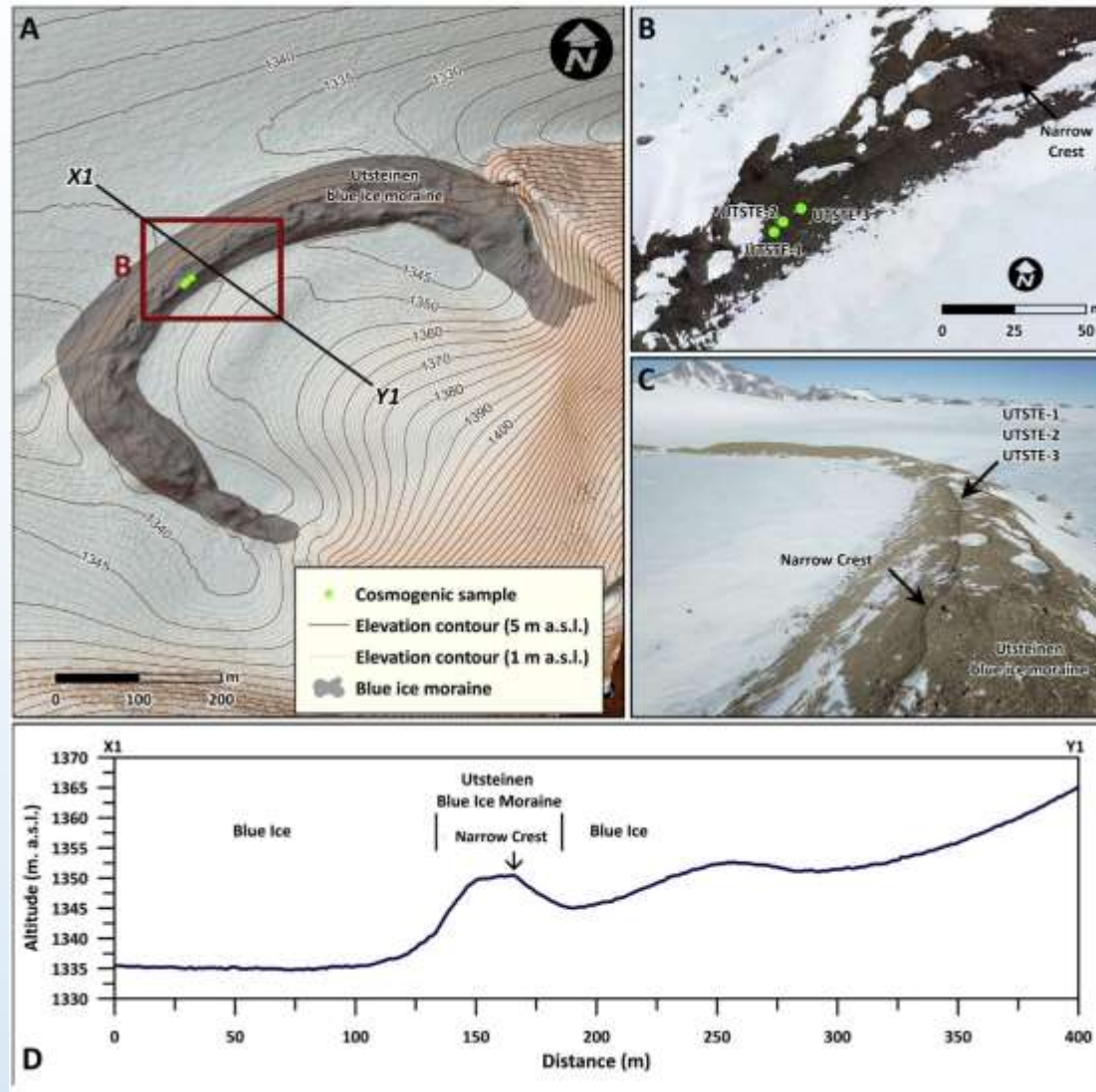




# Coğrafi Bilgi Sistemleri ve Uzaktan Algılama

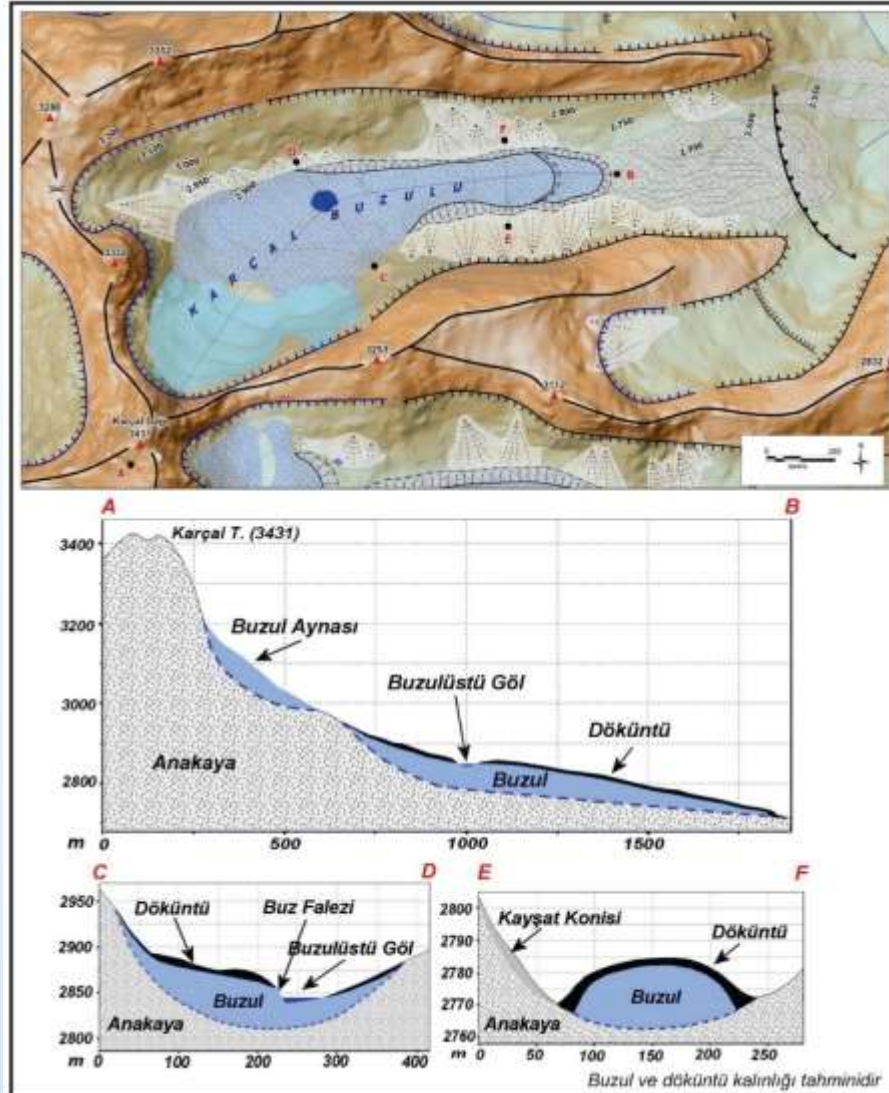


# Coğrafi Bilgi Sistemleri ve Uzaktan Algılama



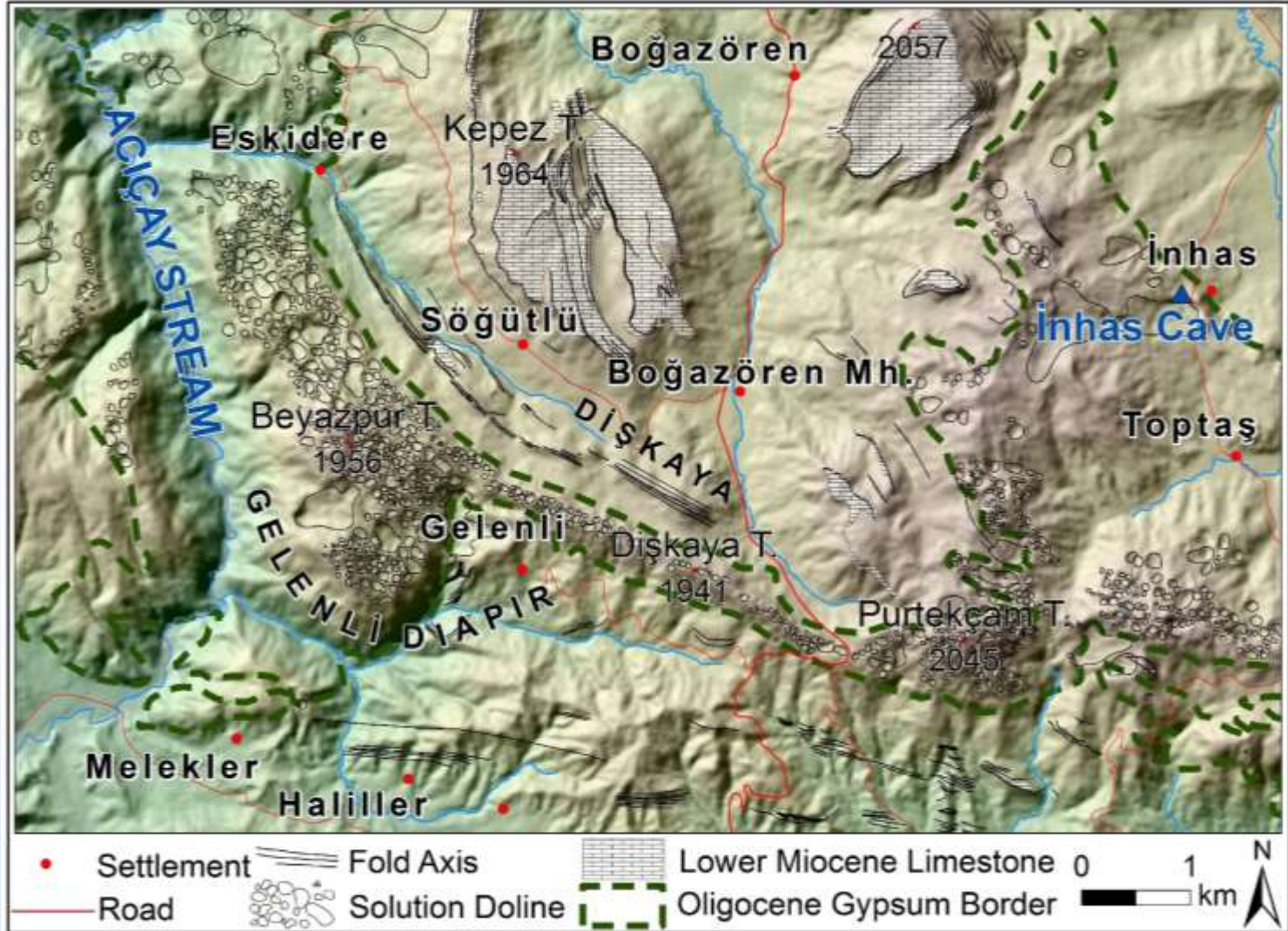


# Coğrafi Bilgi Sistemleri ve Uzaktan Algılama

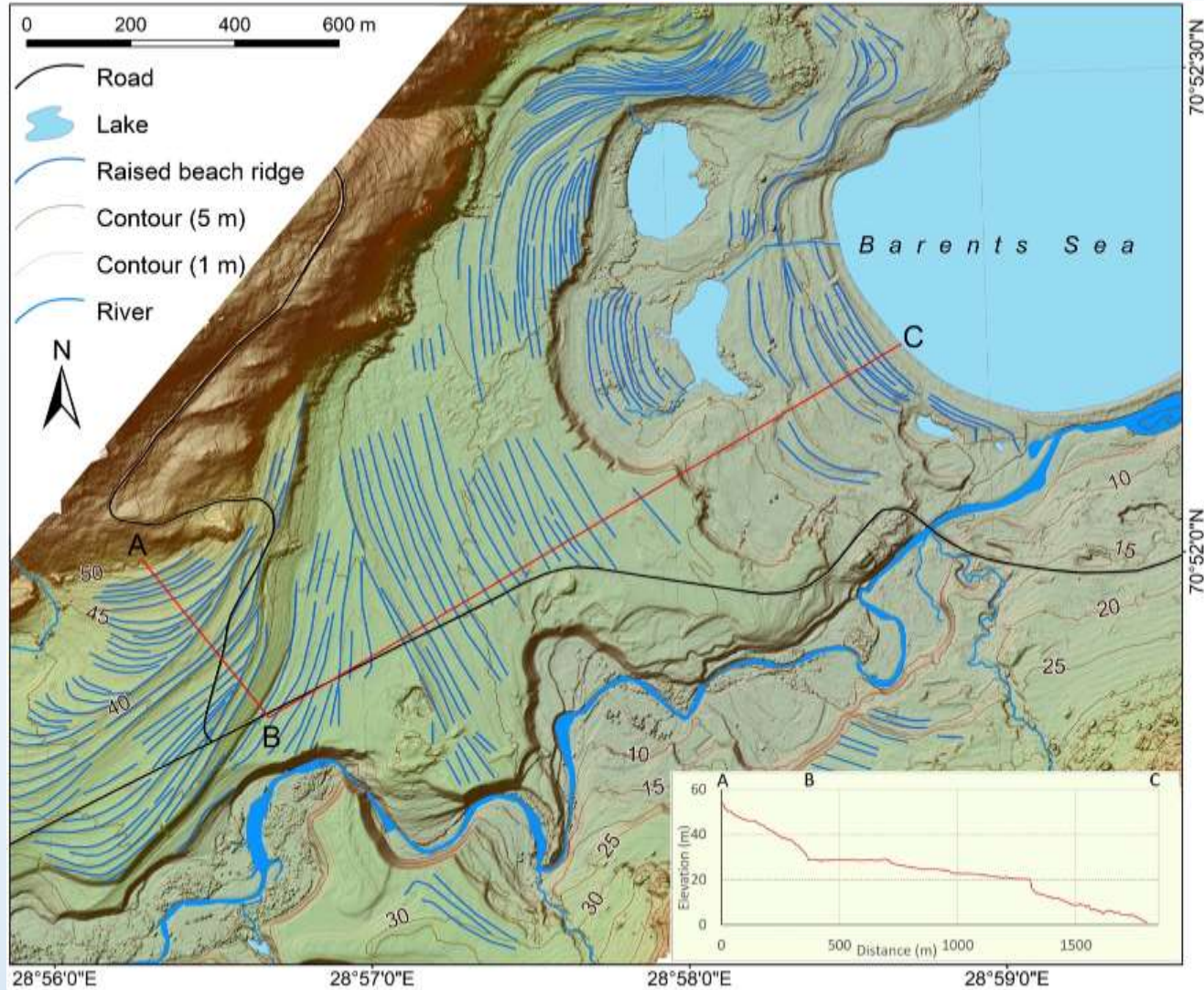




# Coğrafi Bilgi Sistemleri ve Uzaktan Algılama

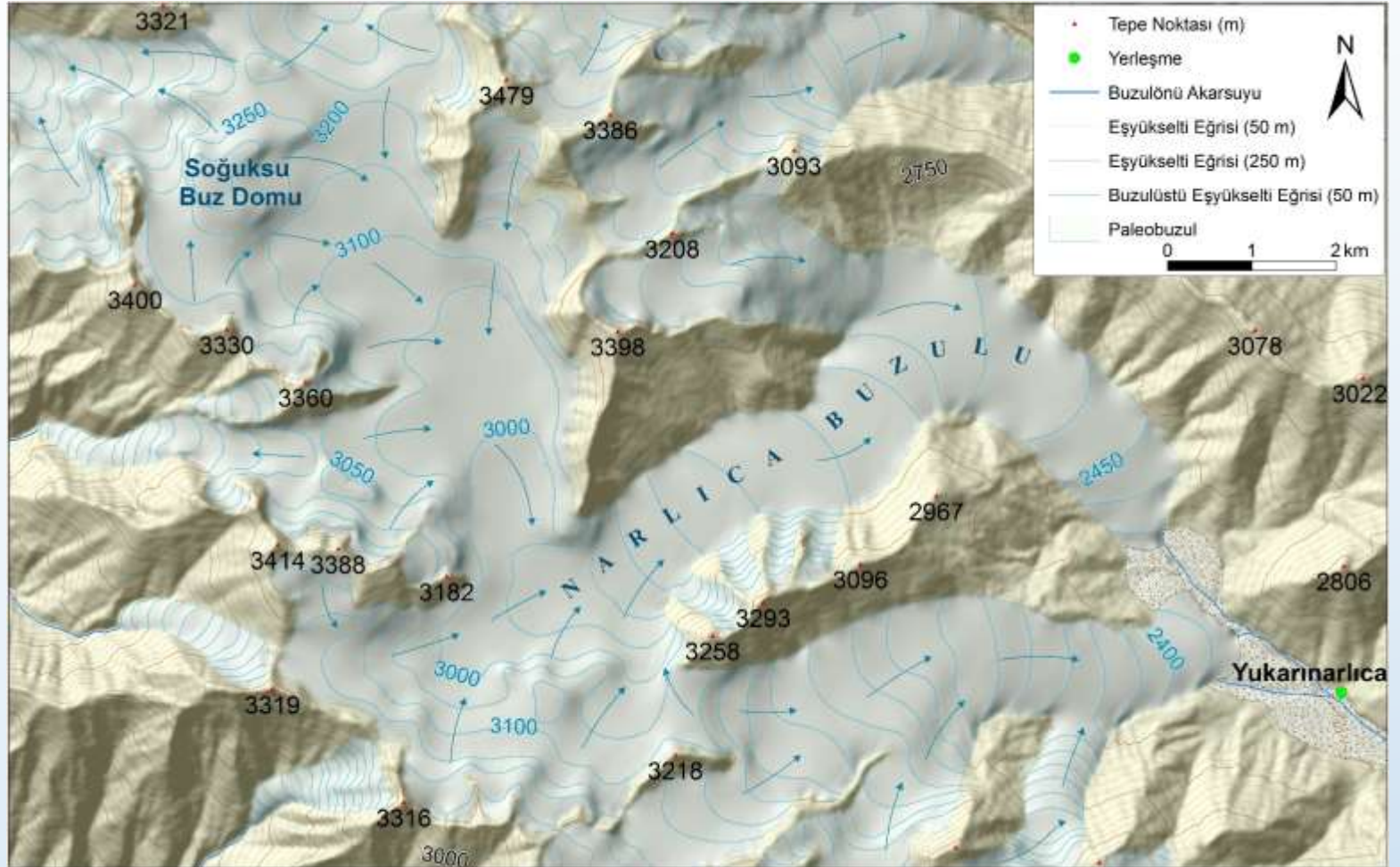


# Coğrafi Bilgi Sistemleri ve Uzaktan Algılama



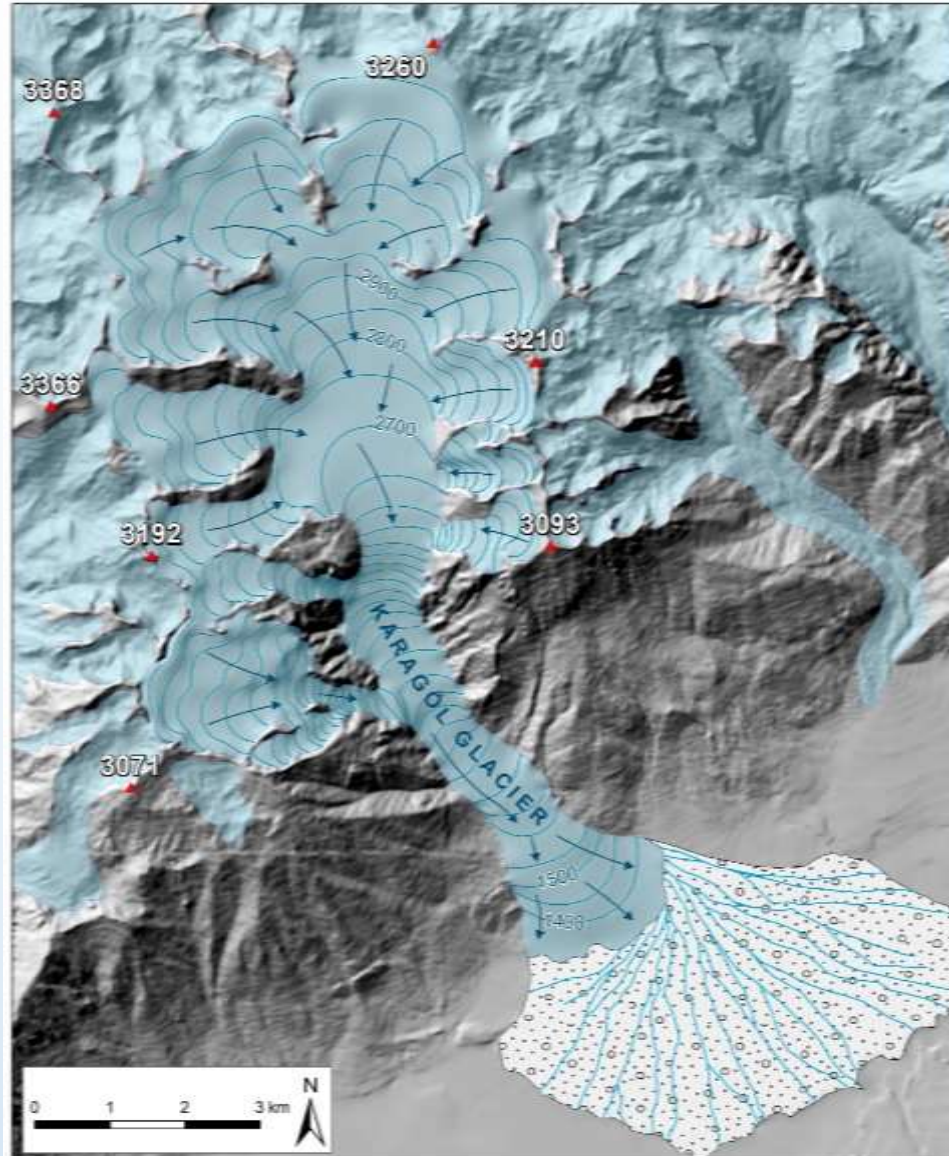


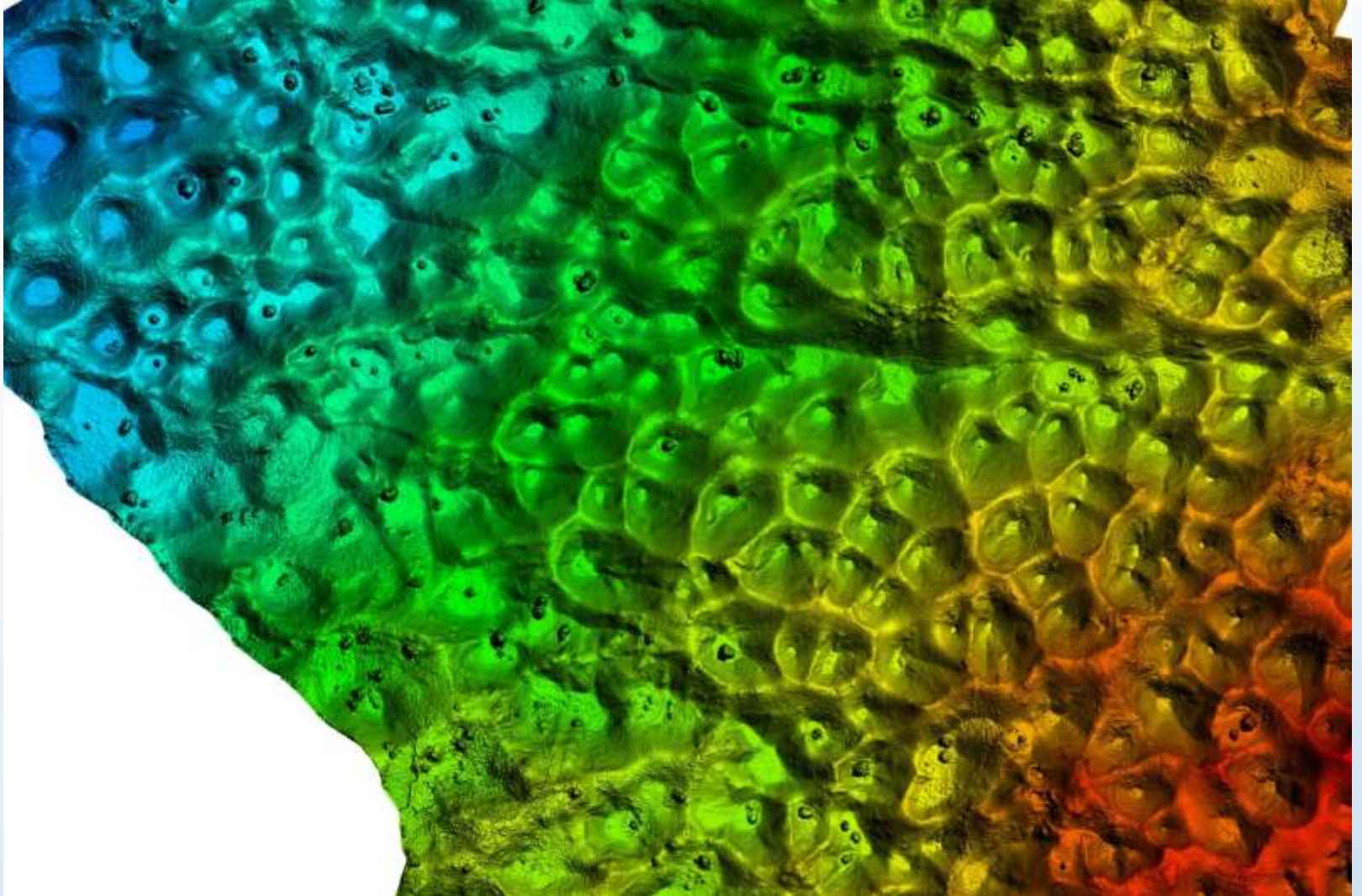
# Coğrafi Bilgi Sistemleri ve Uzaktan Algılama





# Coğrafi Bilgi Sistemleri ve Uzaktan Algılama





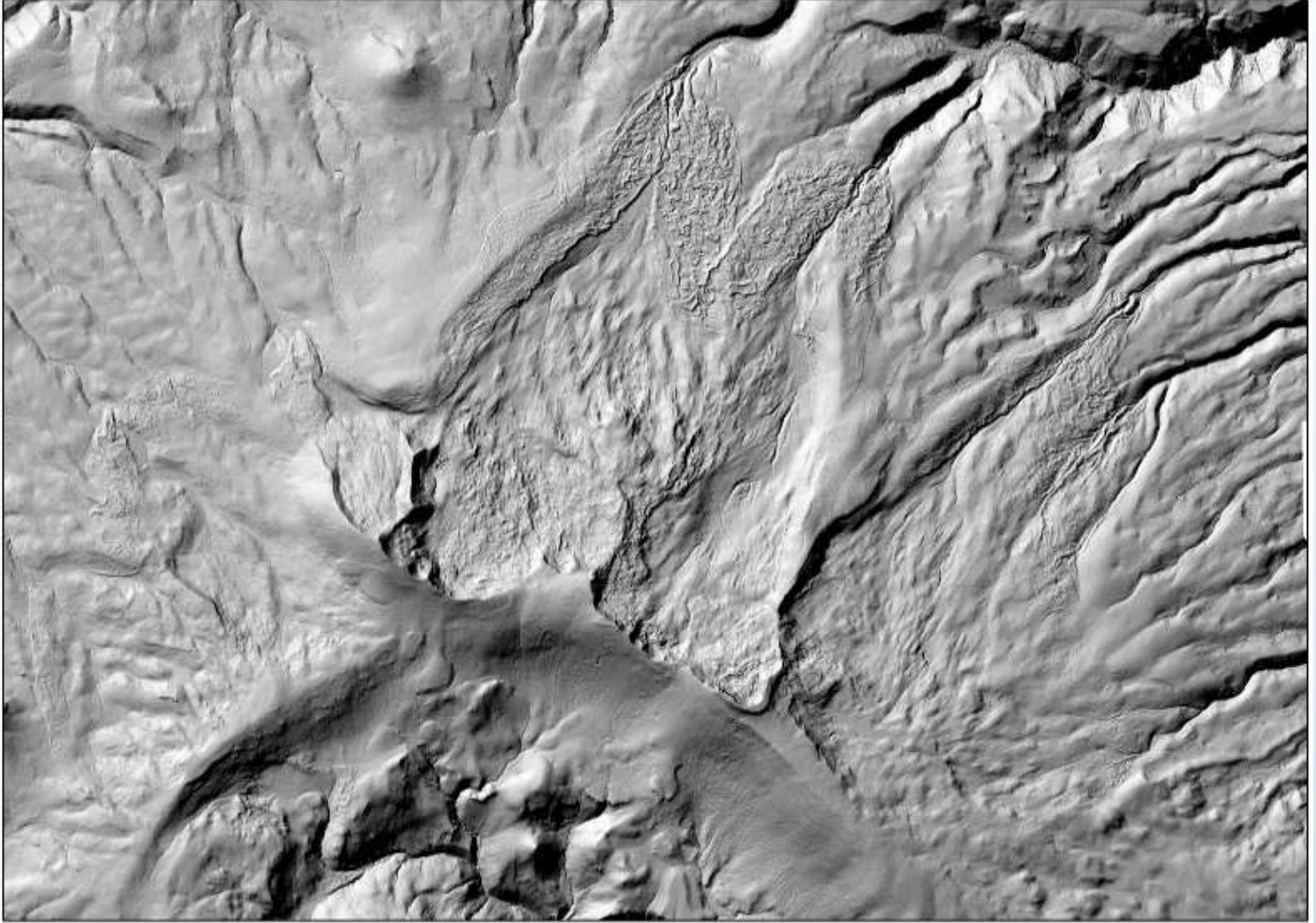


# Coğrafi Bilgi Sistemleri ve Uzaktan Algılama

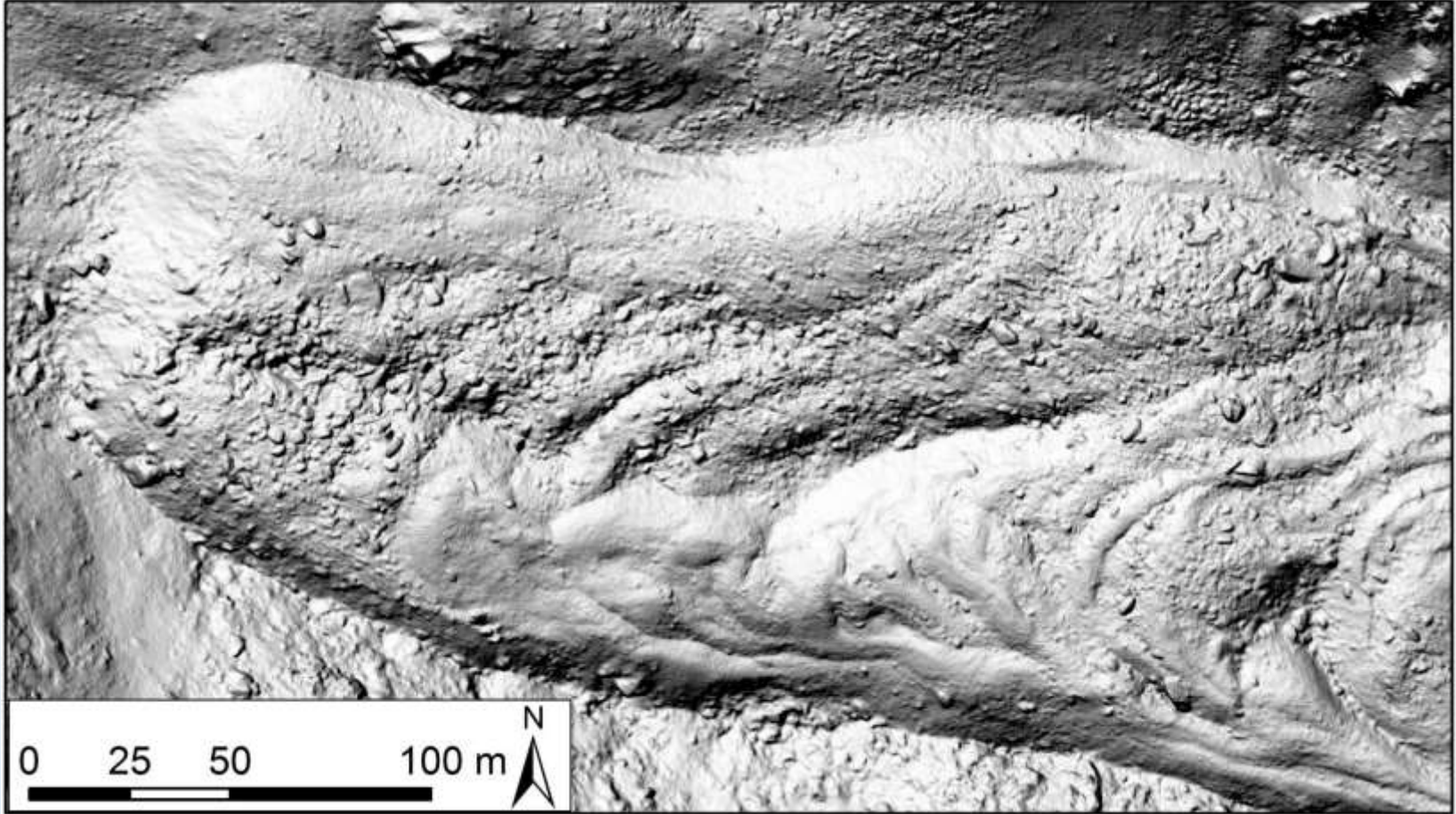




# Coğrafi Bilgi Sistemleri ve Uzaktan Algılama



# Coğrafi Bilgi Sistemleri ve Uzaktan Algılama



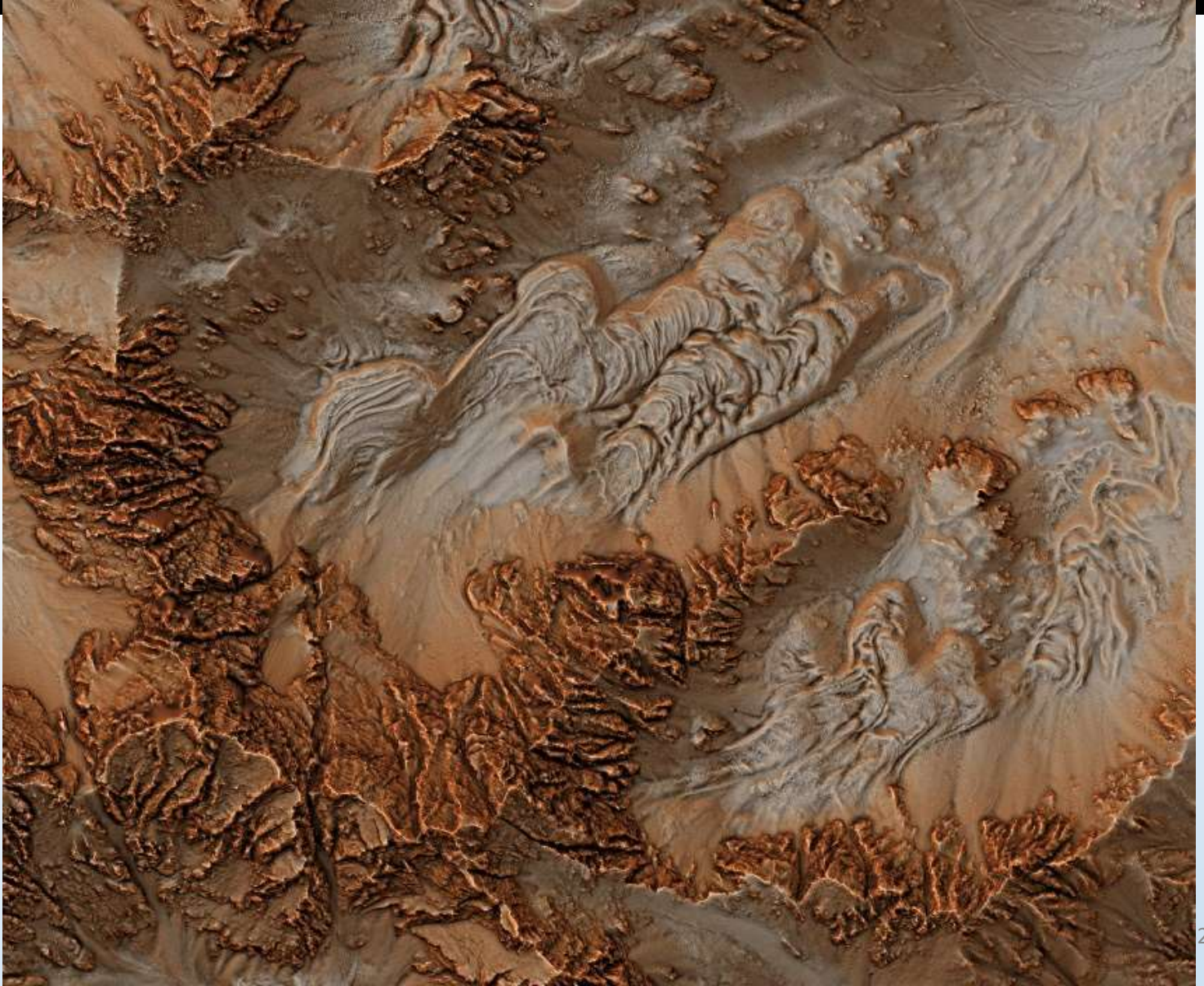


# Coğrafi Bilgi Sistemleri ve Uzaktan Algılama





# Coğrafi Bilgi Sistemleri ve Uzaktan Algılama

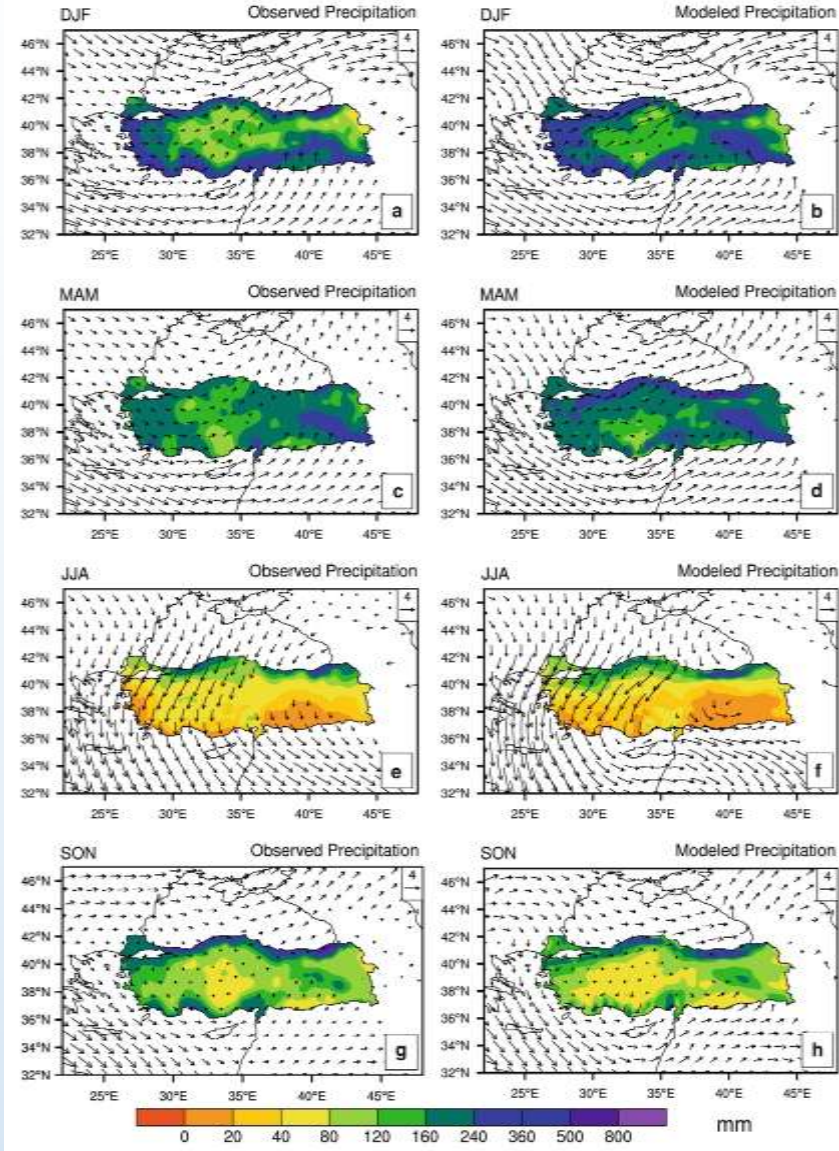


# Coğrafi Bilgi Sistemleri ve Uzaktan Algılama



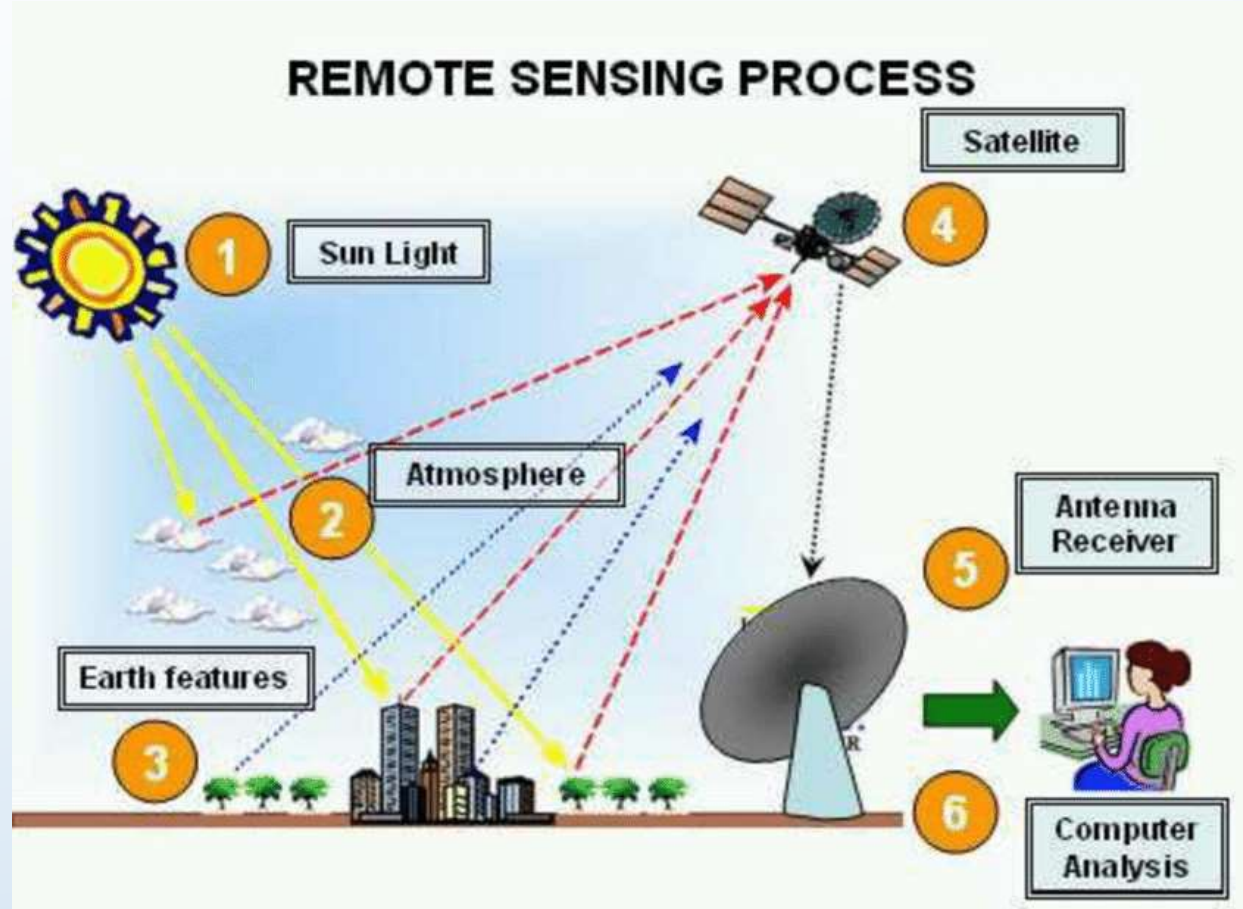


# Coğrafi Bilgi Sistemleri ve Uzaktan Algılama



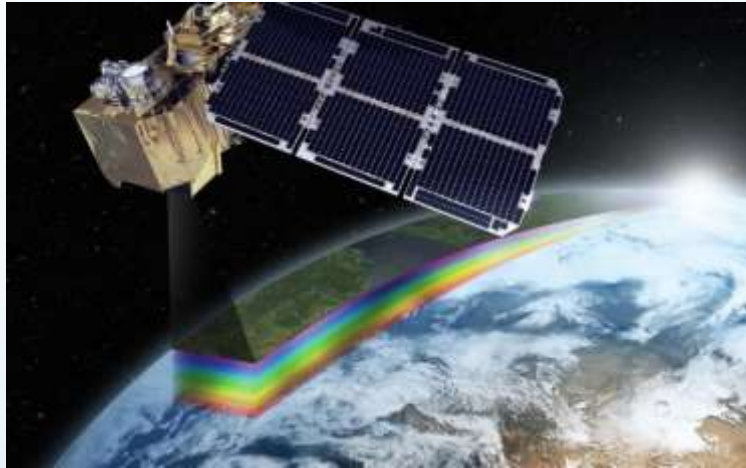
## Uzaktan Algılama

- Uzaktan algılama, belirli bir mesafeden hava araçları ve uydular vasıtasıyla yeryüzündeki bir alanın fiziki özelliklerinin algılanması ve izlenmesi süreci olarak tanımlanır.





## Uzaktan Algılama



Passive Remote Sensing



Active Remote Sensing

a) Reflected energy



b) Emitted energy



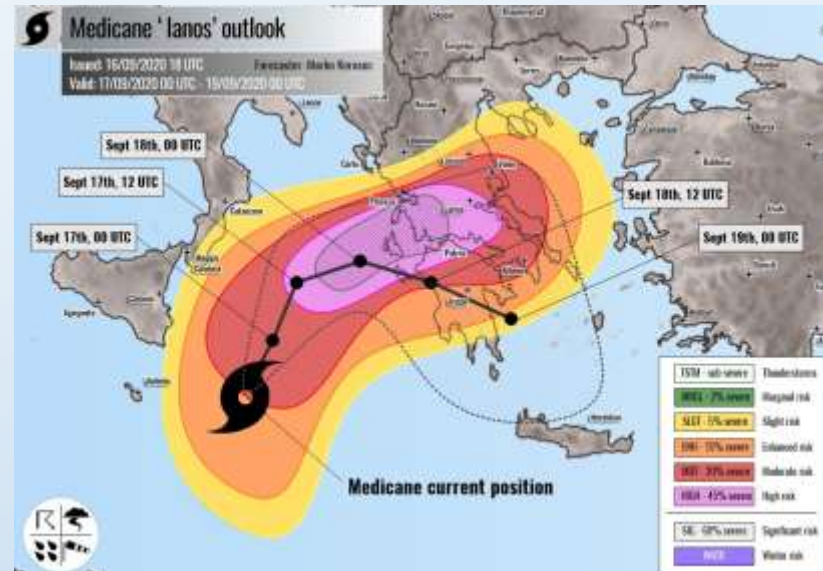
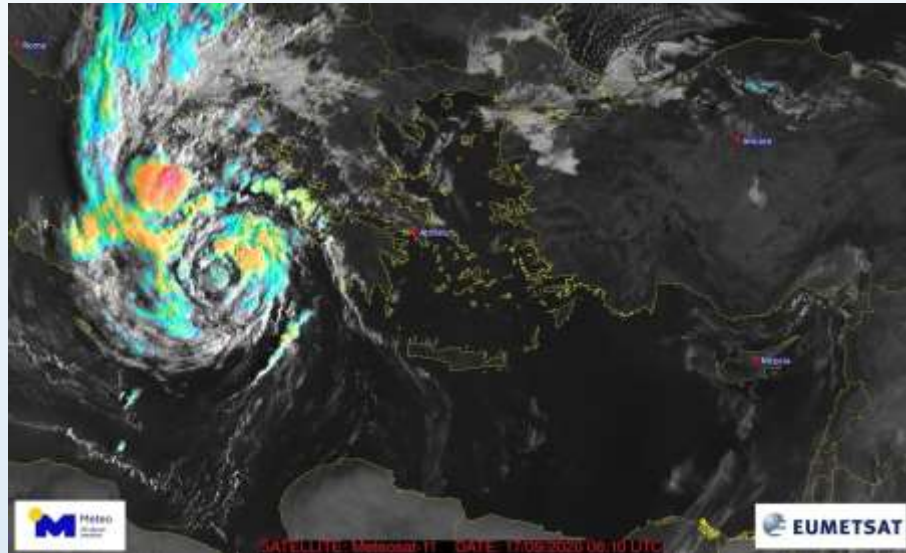
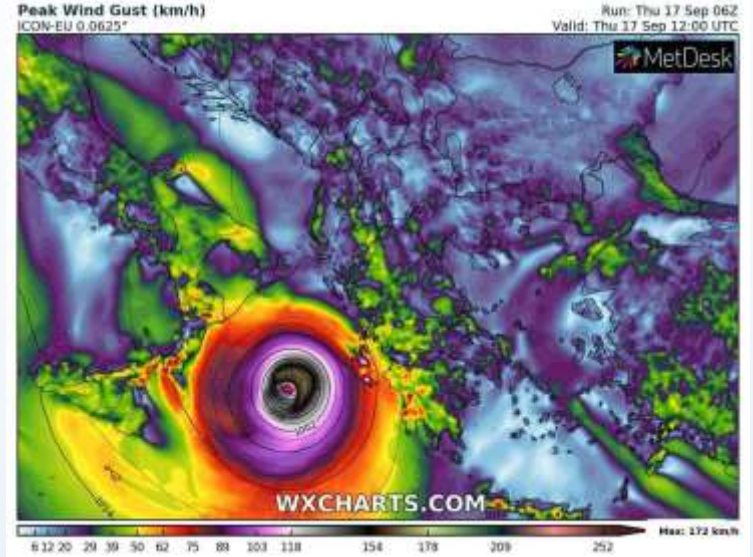
**Measures energy that is naturally available**

- Reflected energy: Visible wavelength (day only)
- Emitted energy: Infrared, Microwave wavelength (day or night)

**Sensor emits radiation and records backscattered and reflected radiation**

- Independent of sun, day and night
- Often higher resolution than passive systems

# Coğrafi Bilgi Sistemleri ve Uzaktan Algılama





# Coğrafi Bilgi Sistemleri ve Uzaktan Algılama

