

## Meme tümörü



## Fibroadenematöz hiperplazi



# TEDAVİ

Operatif uzaklaştırma

Kemoterapi

İmmunoterapi

Endokrin tedavi

**Radikal mastektomi (en sık uygulanan tedavi yöntemidir).**

**Kemoterapi**

**İlerlemiş vakalarda  
Postoperatif nüks ve  
metastazları engellemek için**

**Radikal mastektomi tekniğinde önce;**

**Bir taraftaki meme zinciri ve lenf yumrusu 15 gün sonra; diğer meme bezleri ve lenf yumrusu uzaklaştırılmaktadır.**

# PROGNOZ

**Operasyon tekniđi**

**Kedinin yaşı**

(genç kedilerde yaşam süresi yaşlılardan daha kısadır)

## Primer tümörün büyüklüğü

(çapı 2 cm'den büyük olanlarda yaşam süresi kısadır)

## Lenf yumrusuna metastaz

(metastaz varsa yaşam süresi kısa)

**Tümörün tespit edildiği dönemde metastaz varsa yaşam daha kısadır.**

**Primer tümör üzerindeki nekroz yoksa yaşam daha uzundur.**



FIGURE 1



Table 5 – Molecular markers and their prognostic value

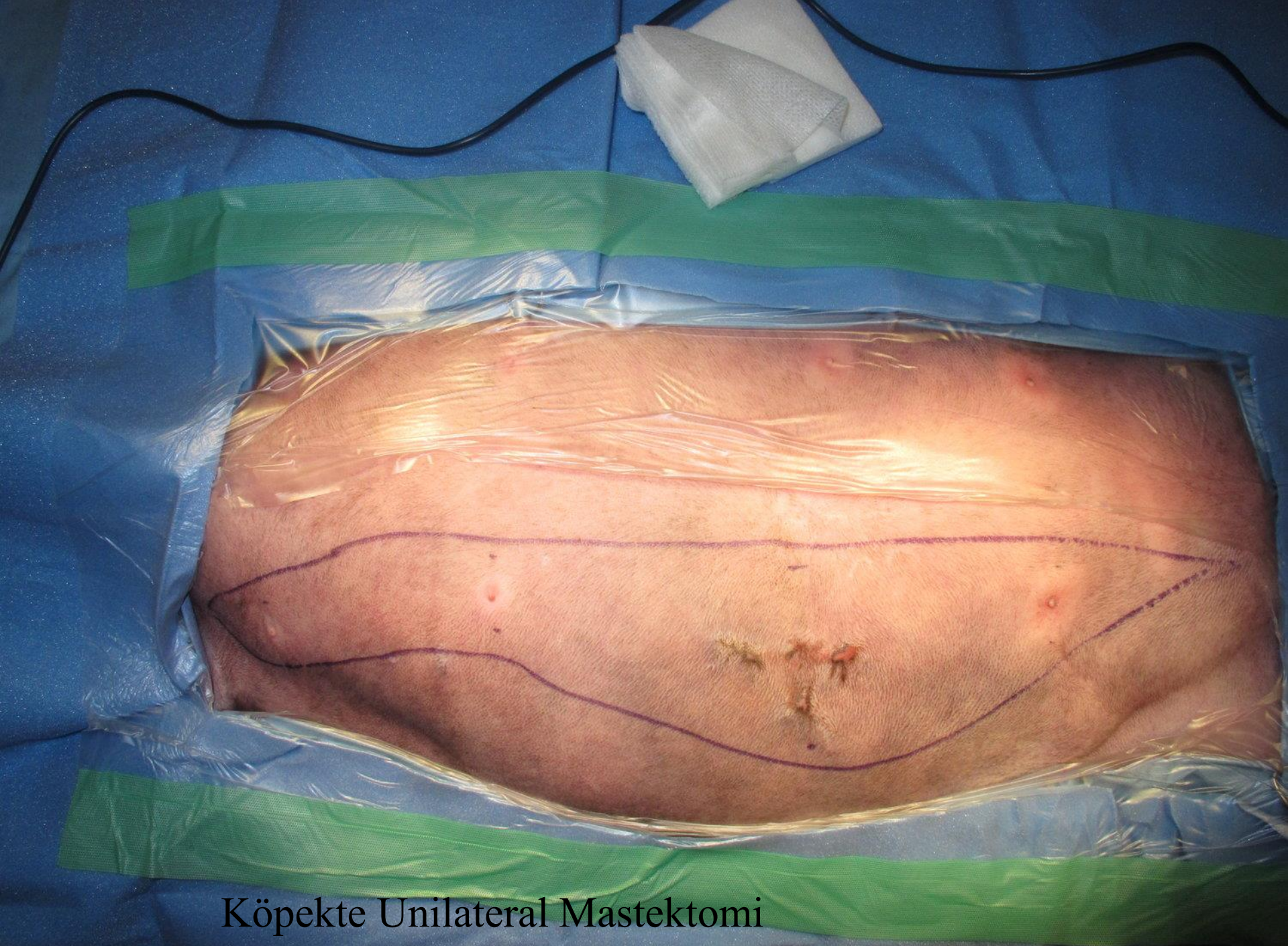
<b>Molecule</b>	<b>Expression</b>	<b>Prognostic value</b>
<b>Ki-67</b>	Increased in malignant MT and higher grade	Controversial results
<b>AgNOR</b>	Increased in malignant in MT	Further investigations
<b>PCNA</b>	Increased in malignant MT	Controversial results
<b>Metallothioneins</b>	Increased in malignant MT	Further investigations
<b>VEGF</b>	Increased in malignant MT	Shorter overall survival time
<b>iNOS</b>	Increased in malignant MT and Grade II and III	Poor prognostic
<b>eNOS</b>	Increased in hyperplastic lesions	Further investigations
<b>p53</b>	Increased in malignant MT	Poor prognostic
<b>COX-2</b>	Malignant MT (96% - Millanta <i>et al.</i> (2006)	Poor prognostic
	Malignant MT (87 % - Sayasith <i>et al.</i> (2009))	Poor prognostic
	Absence in Malignant MT (Beam <i>et al.</i> (2003))	
<b>HER-2/neu</b>	Malignant MT (5,5% - Rasotto <i>et al.</i> (2011))	Poor prognostic
	Malignant MT (33,3% - Maniscalco <i>et al.</i> (2013))	Short overall survival
	Malignant MT (40%- Ordás <i>et al.</i> (2007))	Short overall survival
	Malignant MT (59,6% - Millanta <i>et al.</i> (2005))	Short overall survival
<b>TopBP1</b>	Increased in high grade of malignant MT	Further investigations
<b>RON</b>	Increased in malignant MT	Further investigations
<b>E – Cadherin</b>	Reduction or absence in malignant MT	Further investigations
<b>AKT</b>	Malignant MT and tumour differentiation	Shorter DFI/ Further investigations
<b>PTEN</b>	Loss in malignant MT	Poor prognosis/Further investigations
<b>Cyclin A</b>	Increased in malignant MT	Further investigations
<b>Cancer Stem Cells</b>	Increased in malignant MT	Poor prognosis



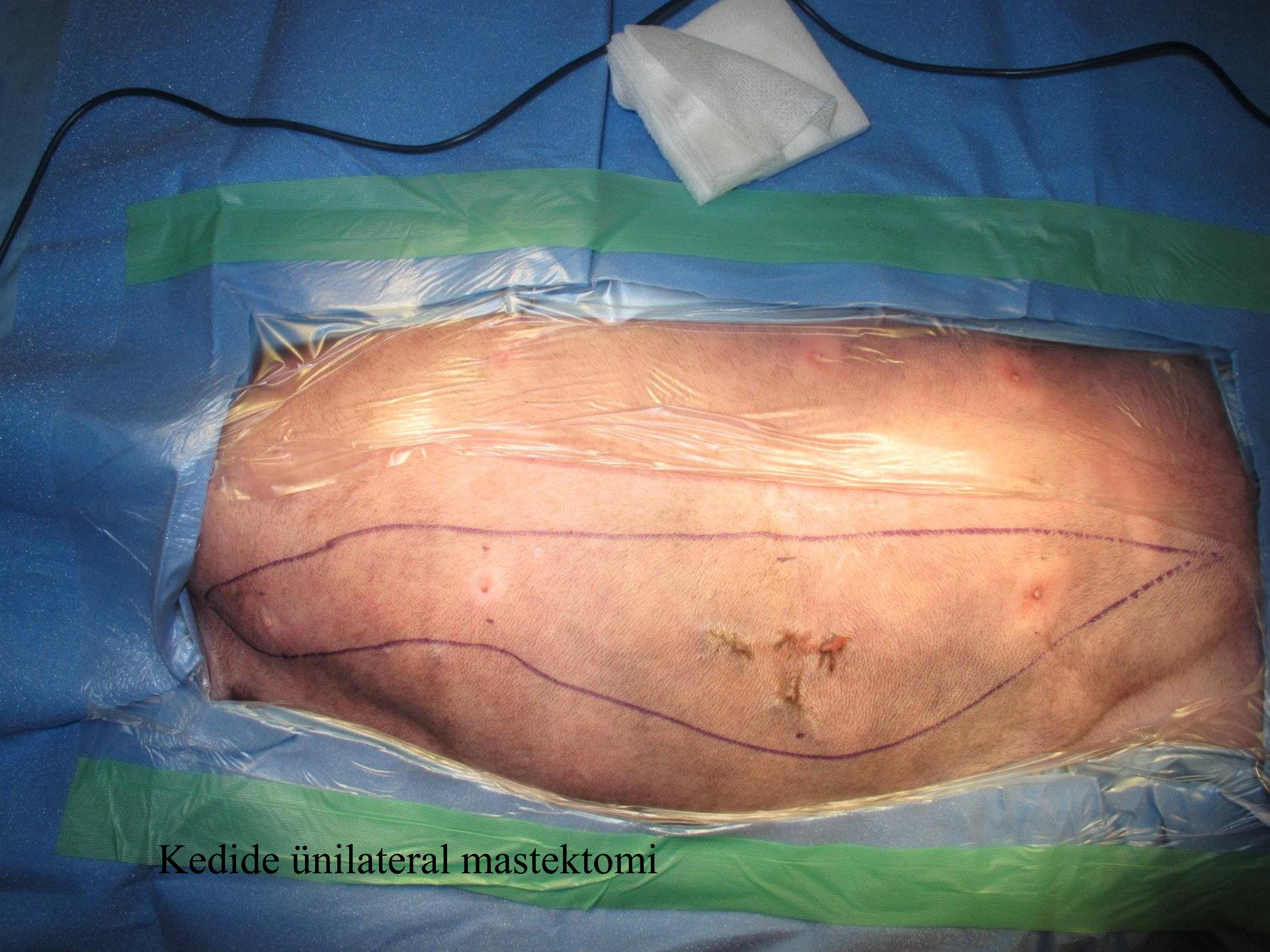
Lokal Mastektomi



Regional Mastektomi



Köpekte Unilateral Mastektomi



Kedide ünilateral mastektomi



Köpekte bilateral mastektomi



Kedide bilateral mastektomi





Yangılı adenokarsinom



Köpekte yangılı karsinom



Kedide aksillar lenf yumrusu metastazı





Köpekte adenokarsinom

*Table 3- TNM Classification system for mammary tumours of domestic animals*

<b><i>Tumour size (diameter) (T)</i></b>	<b><i>Classification</i></b>	<b><i>Regional Lymph nodes Metastases (N)</i></b>	<b><i>Classification</i></b>	<b><i>Distant Metastases (M)</i></b>	<b><i>Classification</i></b>
<b><i>&lt;2cm</i></b>	T1	Without metastases	N0	Without metastases	M0
<b><i>2-3cm</i></b>	T2	With metastases	N1	With metastases	M1
<b><i>&gt;3cm</i></b>	T3				

Adapted from Owen, 1980.

*Table 4- Staging of Feline Mammary Tumours*

<b>Stage</b>	<b>T Classification</b>	<b>N Classification</b>	<b>M Classification</b>
<b><i>I</i></b>	<i>T1</i>	<i>N0</i>	<i>M0</i>
<b><i>II</i></b>	<i>T2</i>	<i>N0</i>	<i>M0</i>
<b><i>III</i></b>	<i>T1, T2</i>	<i>N1</i>	<i>M0</i>
	<i>T3</i>	<i>Any N</i>	<i>M0</i>
<b><i>IV</i></b>	<i>Any T</i>	<i>Any N</i>	<i>M1</i>

Adapted from Owen, 1980

