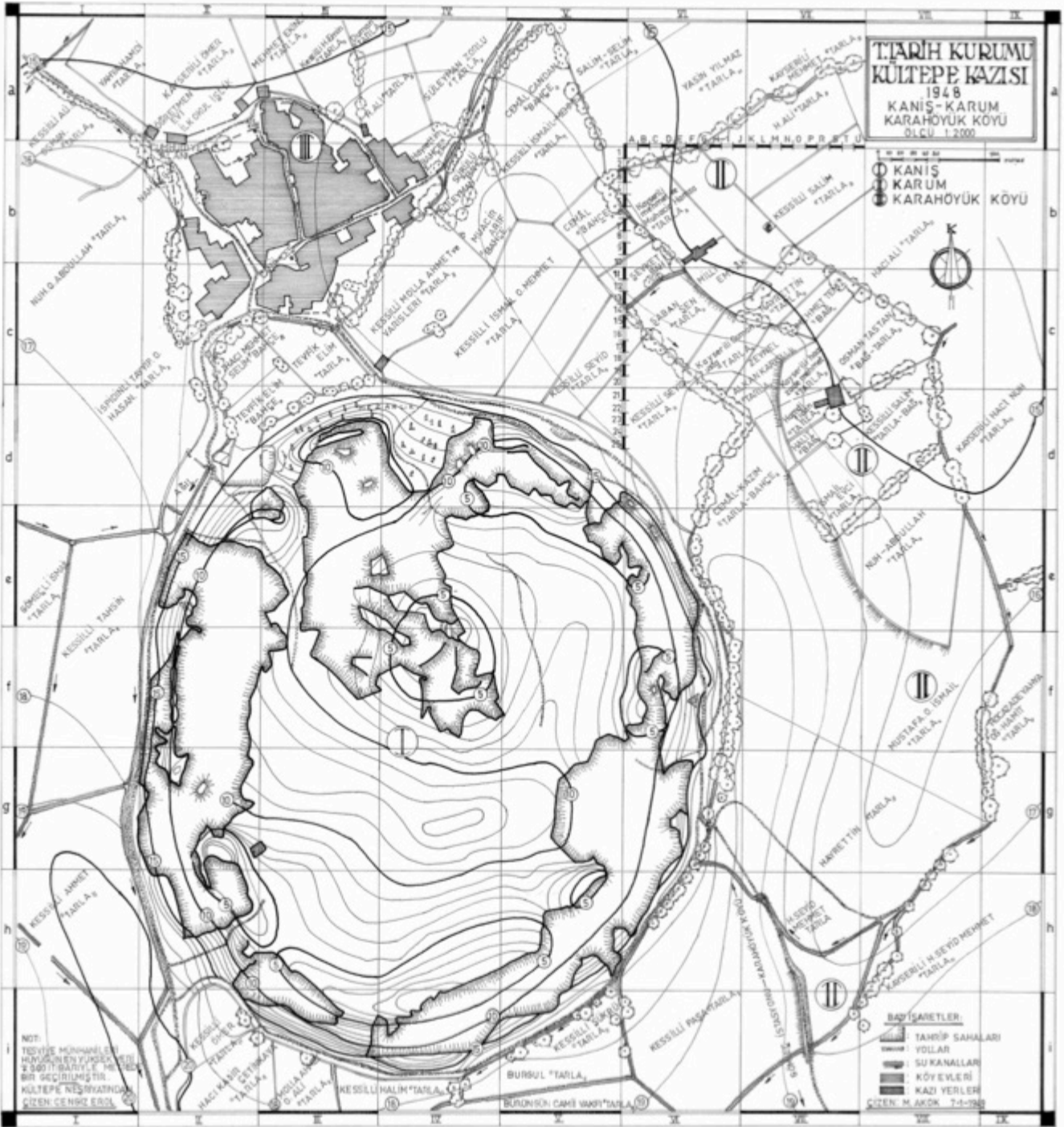


TARİH KURUMU
KÜLTEPE KAZISI
1948
KANIS-KARUM
KARAHÖYÜK KÖYÜ
ÖLÇÜ 1:2000

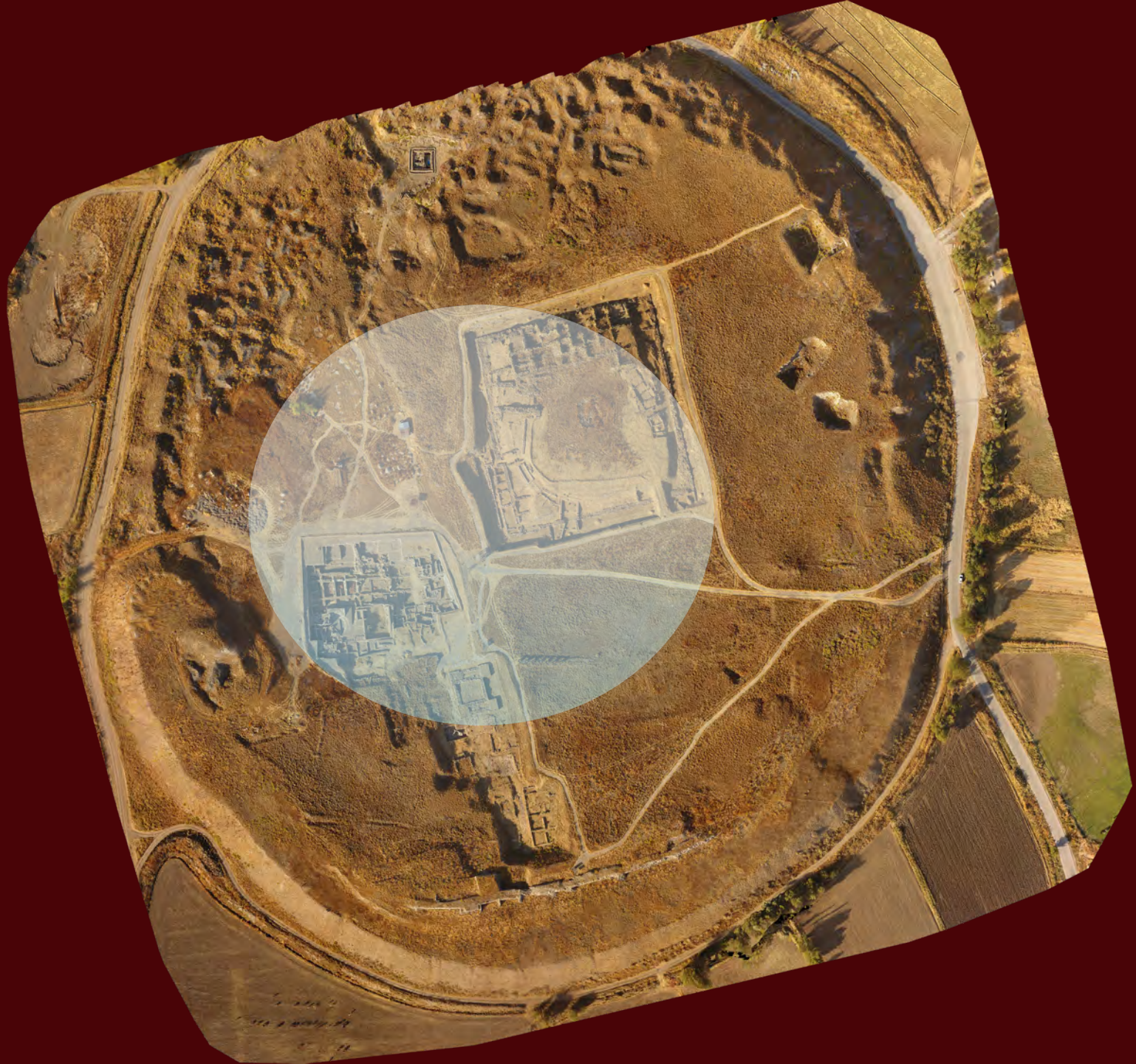
○ KANIS
● KARUM
● KARAHÖYÜK KÖYÜ



BADİŞAİRETLER:
■ TARIH SAHALARI
— VOLLAR
— SU KANALLARI
— KÖYLELERİ
— KAZI YERLERİ
ÇİZEN: M. AKOĞ 7.4.1948



NOT:
TODAYE MİHMANLARI
MÜHÜRÜNÜ YERİNE
2 040/11 040/11 T. 10. 1948
BİR GEÇİRİLMİŞTİR
KÜLTEPE NERİNATINA
ÇİZEN: CEMAL ERİL







Kuzey Açma, 2017





+XVIII

+XI

1089.0m

1088.0m

1087.0m

1086.0m

1089.0m

1088.0m

1087.0m

1086.0m

Layer V

Layer VI

Layer VII

Layer VIII

Layer IX

Layer X

Layer XI

2σ : 2503- 2449 cal BC (51.5%)

2σ : 2572- 2512 cal BC (60.0%)

2σ : 2760- 2580 cal BC (69.2%)

2σ : 2816- 2670 cal BC (76.1%)

2σ : 3036- 2919 cal BC (76.7%)

0 1m

Layer XIV







CTIONS - TIRÉS À PART - CNRS ÉDITIONS - TIRÉS À PART

A 'COMMUNAL' BUILDING OF THE BEGINNING OF THE EARLY BRONZE AGE AT ARSLANTEPE-MALATYA (TURKEY). SPATIO-FUNCTIONAL ANALYSIS AND INTERPRETATION OF THE ARCHAEOLOGICAL CONTEXT

G. PALUMBI, C. ALVARO, C. GRIFONI and M. FRANGIPANE with contributions by C. VIGNOLA and F. TERRASI*

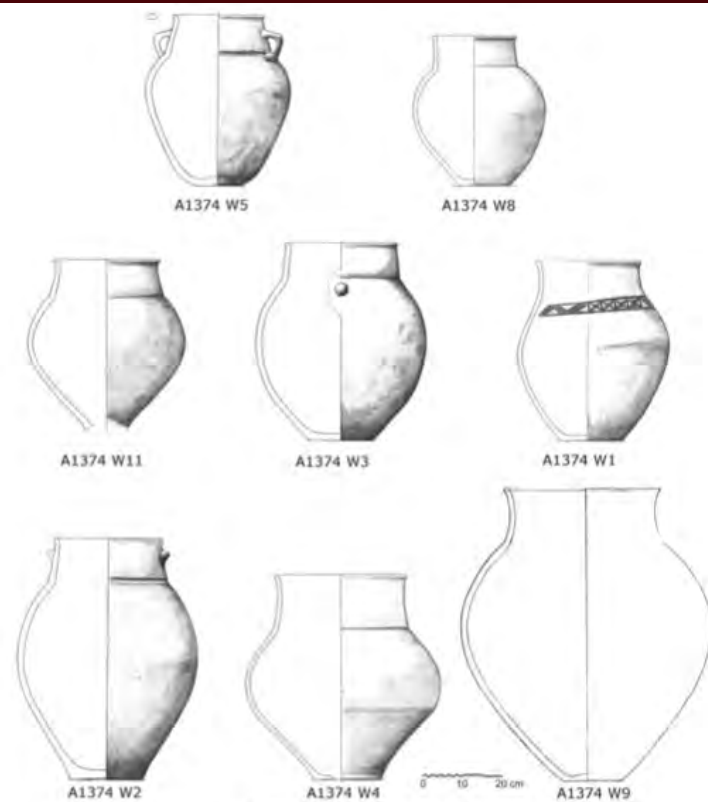
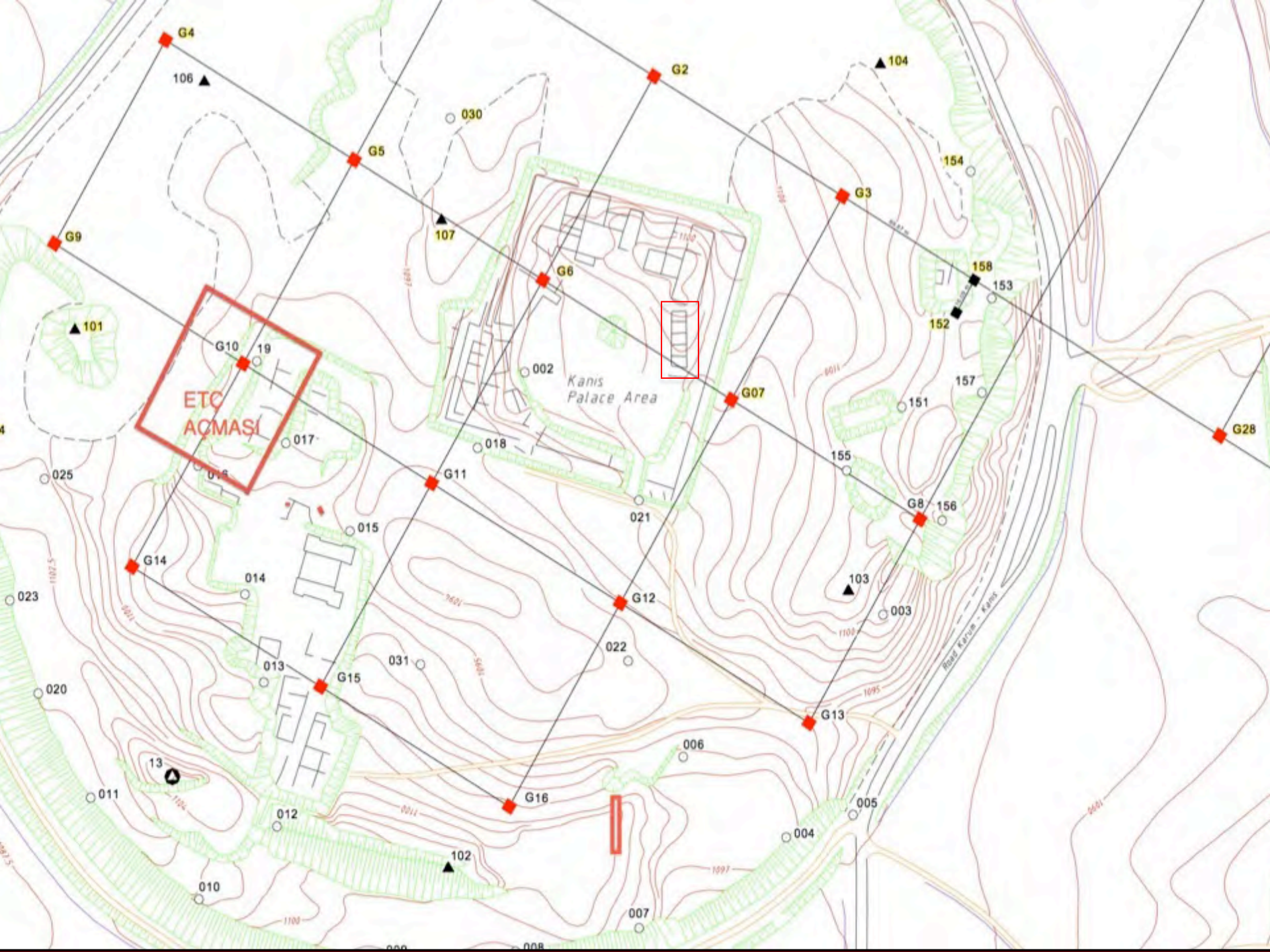


Fig. 13 – Ceramic vessels from room A1374.

A 'COMMUNAL' BUILDING OF THE BEGINNING OF THE EARLY BRONZE AGE AT ARSLANTEPE-MALATYA (TURKEY). SPATIO-FUNCTIONAL ANALYSIS AND INTERPRETATION OF THE ARCHAEOLOGICAL CONTEXT

G. PALUMBI, C. ALVARO, C. GRIFONI and M. FRANGIPANE with contributions by C. VIGNOLA and F. TERRASI*

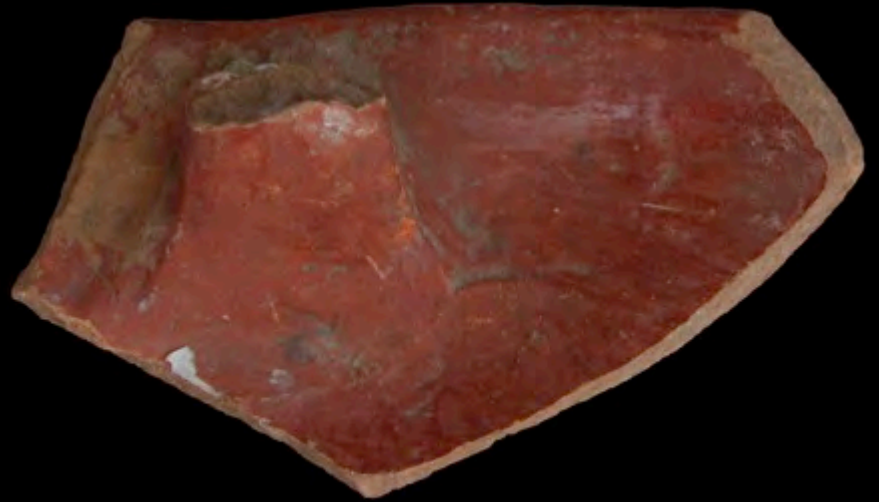


Kanesh	<i>karum</i>	
18		EBA 1
17		EBA 2
16		EBA 2
15		EBA 2
14		EBA 2
13		EBA 3
12		EBA 3
11a-b		EBA 3
10	IV	
9	III	













36

37

38

39

15. KAT
17. KAT



36

37

38

39

- 18. KAT
- 17. KAT
- 16. KAT





16
15
14

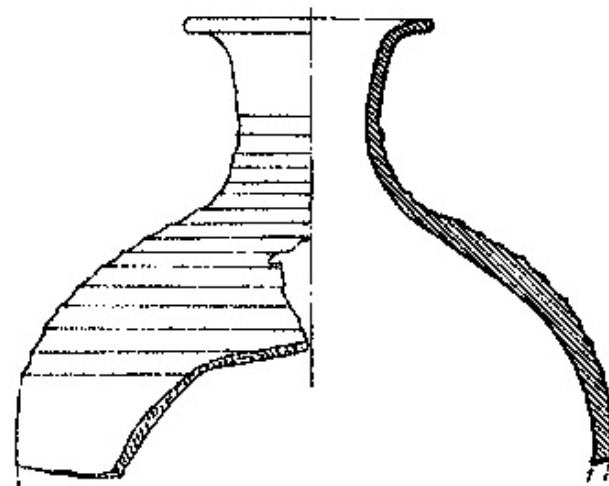


Kühne's F2

Fig. 3-10. Kültepe, Level 15 cist grave, flask



Fig. 3-11. Kültepe, Level 15 cist grave, flask



Ill. 3-8. Kültepe, Level 15, flask sherd



Fig. 3-15. Kültepe, Level 15, flask

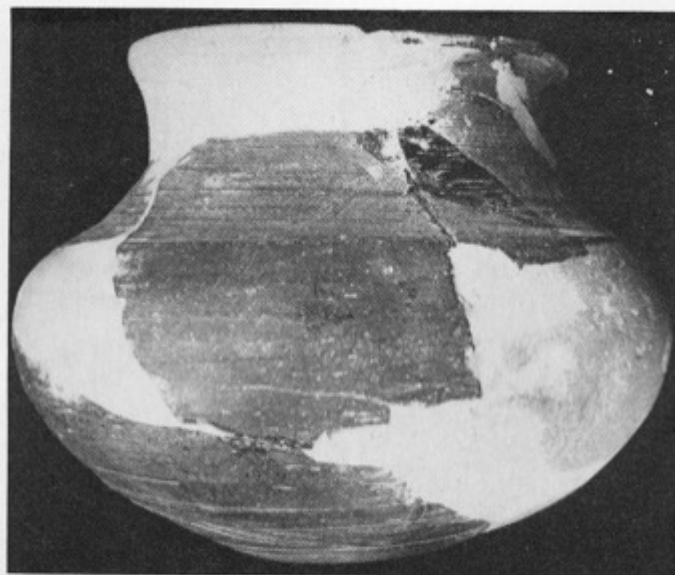
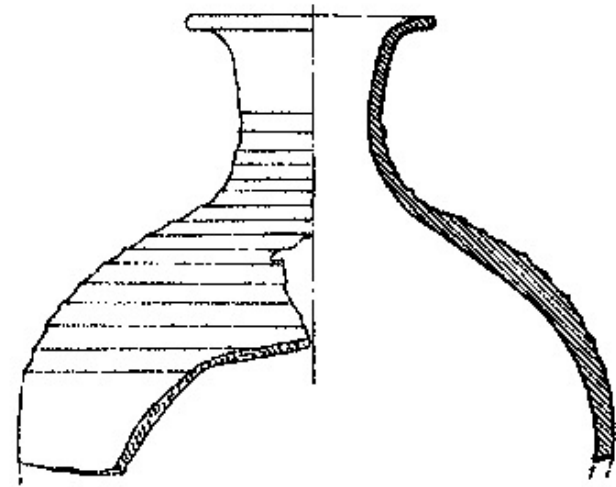


Fig. 3-16. Kültepe, Level 15, flask



Fig. 3-12. Kültepe, Level 15, flask sherd



Ill. 3-8. Kültepe, Level 15, flask sherd



Fig. 3-15. Kültepe, Level 15, flask

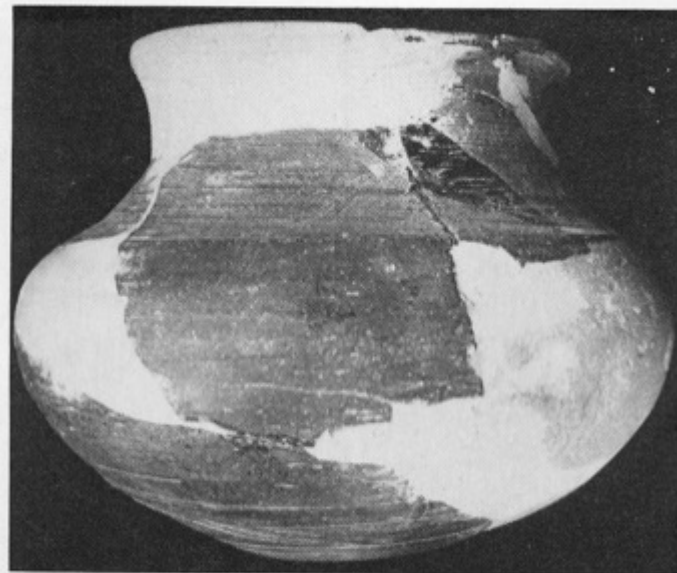


Fig. 3-16. Kültepe, Level 15, flask



Fig. 3-12. Kültepe, Level 15, flask sherd

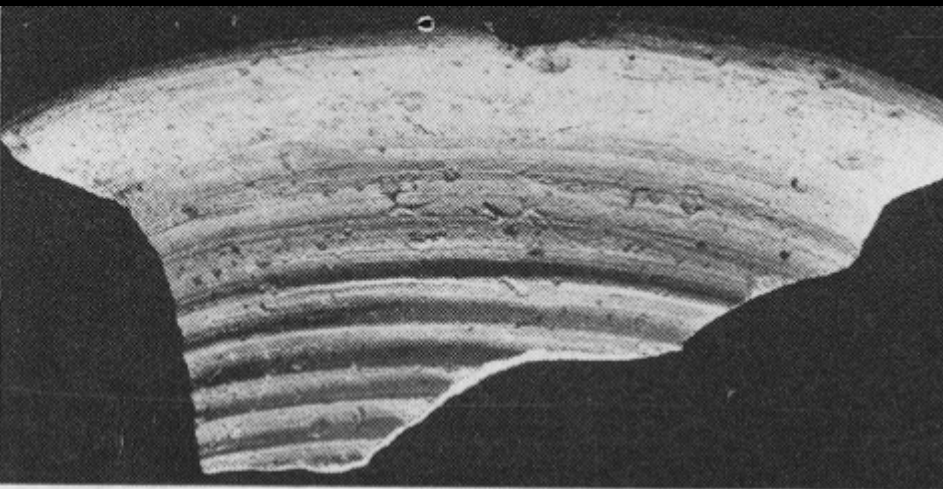
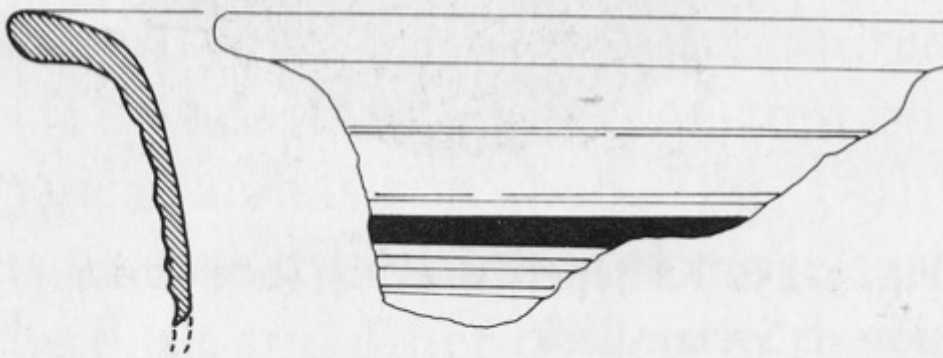


Fig. 3-18. Kültepe, Level 15, flask sherd



Ill. 3-11. Kültepe, Level 15, flask sherd

yük: 14 cm.
gen: 15 "

Kt.K/T 125

yük: 5.5 cm.
gen: 10.5 "

Biçim: masrapa:

Dış ve iç kenarları aynı kalınlığa sahiptir.
İki parçadır. Dışı koyu yeşil renge boyanmıştır.
Kısa boyunlu. Dış kenarında diptir. İç kenarında
süslü bir yassı dış kenar vardır.



X

B.Ş. [Tos sanduka meş. No. 7]

yük: 7 cm.
gen: 9 "

Kt.K/T 122

Masrapa:

Siyah astarlı, parlatılmış. İç kenar
kulp lu. Boyun ve kenar istikrarlıdır.
Yumuşak bir yapıya sahiptir. İki siyah
astarlıdır.



X

B.Ş. [Tos sanduka meş. No. 7]



X

yük: 5.5 cm.
gen: 4.5 "

Kt.K/T 186

Tort:

Yuvatalak ağızlı. Dış kenar koyu yeşil. İç kenar
süslü boyanmıştır. Boyun istikrarlıdır, omuz
kısmında yavaş yavaş genişler. Büyük kul-
lu bu yapıya sahiptir. Neolitik kenar diptir. İstik-
rarlıdır.



X

1952

1953

B.Ş. [Tos sanduka meş. No. 7]

Keski çapı: 5.9 cm.

Boyun yüksekliği: 2.7 "

Kalınlık: 1.2 "

Kt.K/T 201

Mısır idol:

Bel kenarlıklarıyla kenara
yapışık olarak kurulumu vardır. İnce
boyunlu boyanmıştır. Dış kenar, iç kenar
astarlıdır.



X

B.Ş. [Tos sanduka meş. No. 7]

y. 7.5
g. 6.2

Kt.K/T 197

yük: 7.8 cm.
gen: 6 "

Vazo:

Devriye astarlı. İnce boyunlu.
Yuvatalak ağızlı kenarlı desen
var. Yumuşak yapıdadır. Dış kenar
dekoratif çizimlerle süslenmiştir.
İstikrarlıdır. [Suriye istik.]



Vazo:

Devriye astarlı. İnce silindirik bo-
yunlu. Yuvatalak ağızlı kenarlı de-
sen var. Yumuşak yapıdadır.
Çizimlerle süslenmiştir. [Suriye istik.]



Kt.K, yük: 16 cm.
gen: 15.5 "

Kt.K/T 22

Vazo:

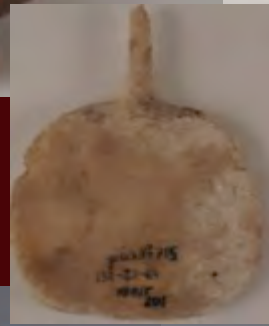
Araç hisar idi: İnce silindirik boyunlu.
Yuvatalak ağızlı. Dış kenar ağız kenarlı.
İstikrarlıdır. İstikrarlıdır. Çizimlerle süslenmiştir.
İstikrarlıdır.

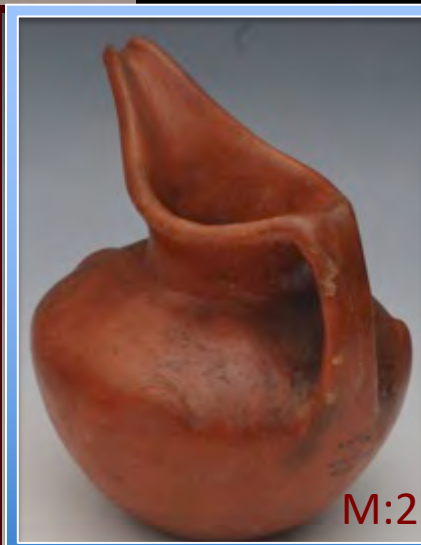
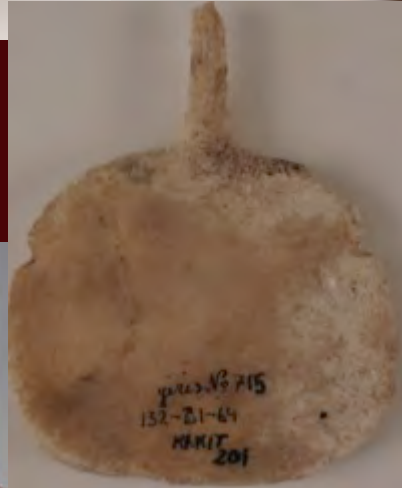


B.Ş. [Tos sanduka meş. No. 7]

B.Ş. [Tos sanduka meş. No. 7]

1953





M:2





16
15
14



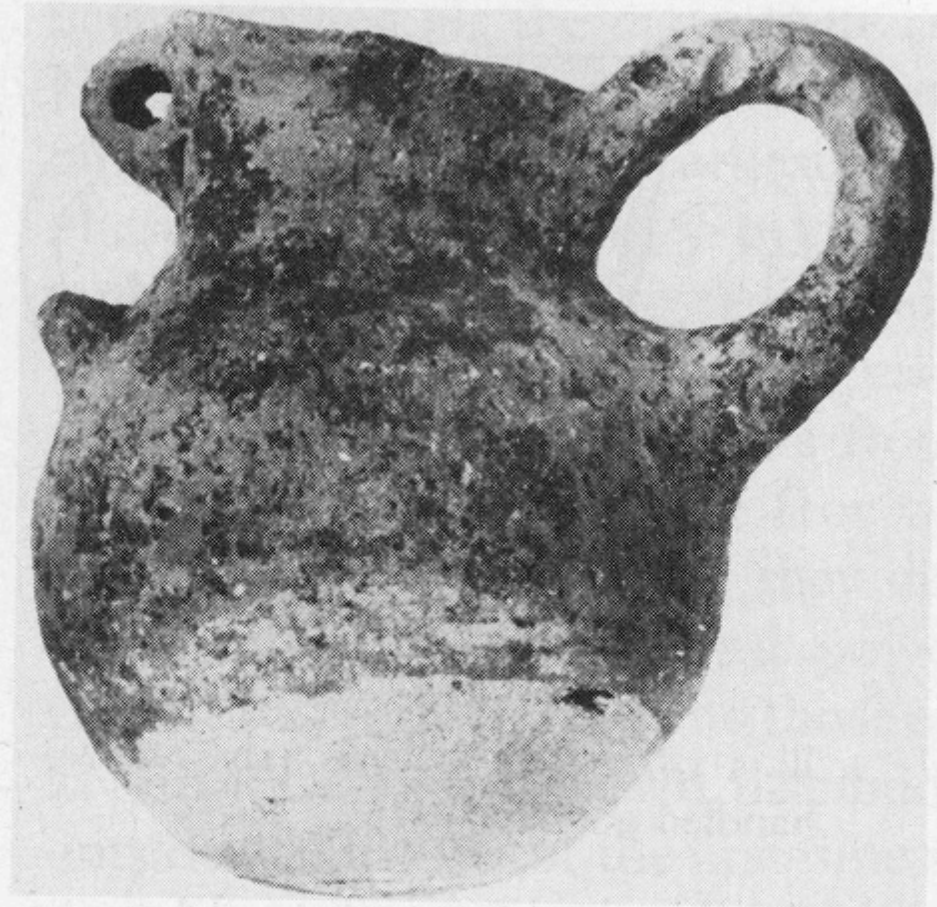
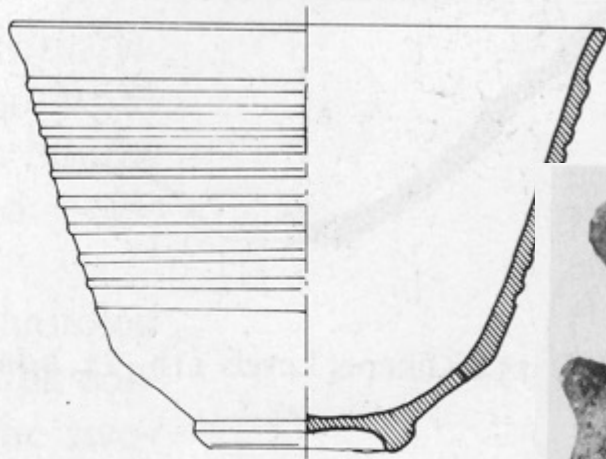


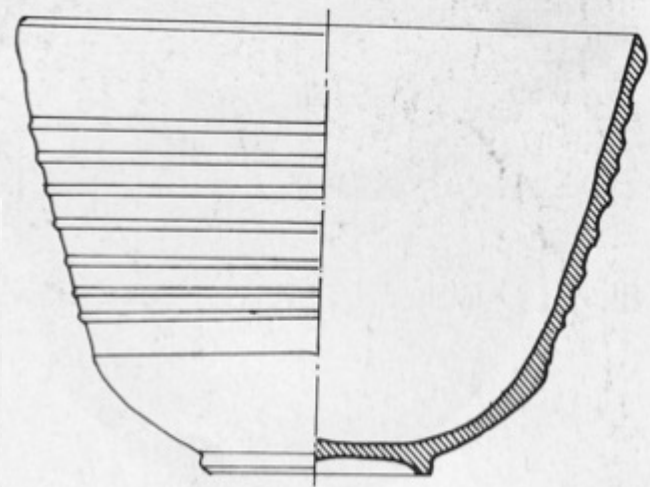
Fig. 3-21. Kültepe, Level 14, beak-spouted pitcher



Kt. 2011/t.13. tabaka



Ill. 3-12. Kültepe, Level 14, beaker



Ill. 3-13. Kültepe, Level 14, beaker



Fig. 3-21. Kültepe, Level 14, beak-spouted pitcher

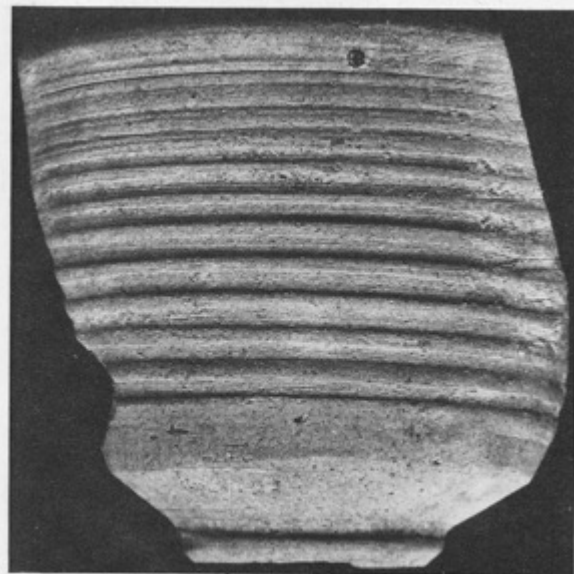


Fig. 3-19. Kültepe, Level 14, beaker

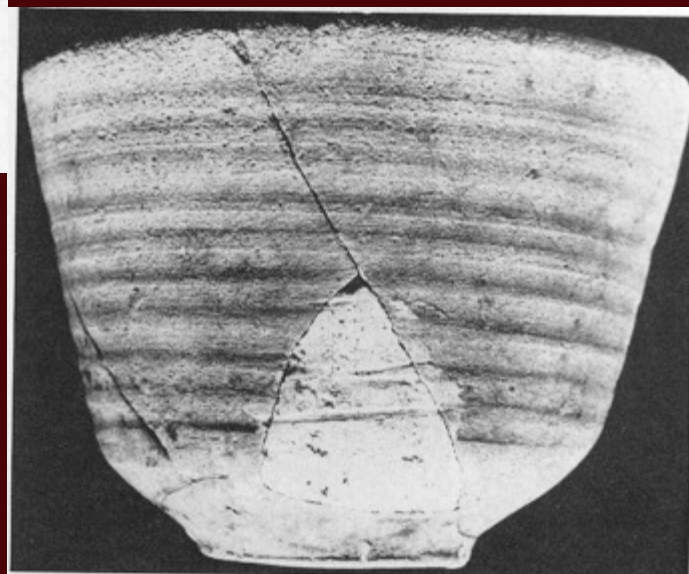
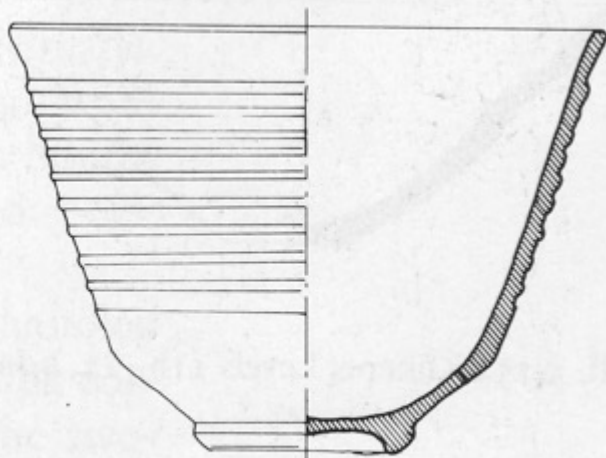
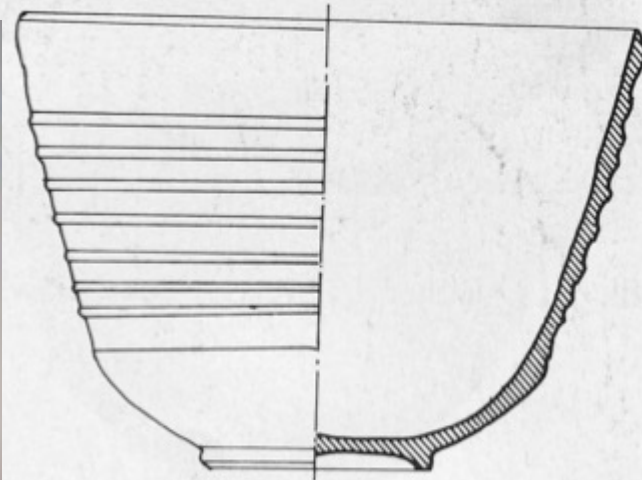


Fig. 3-20. Kültepe, Level 14, beaker



Ill. 3-12. Kültepe, Level 14, beaker



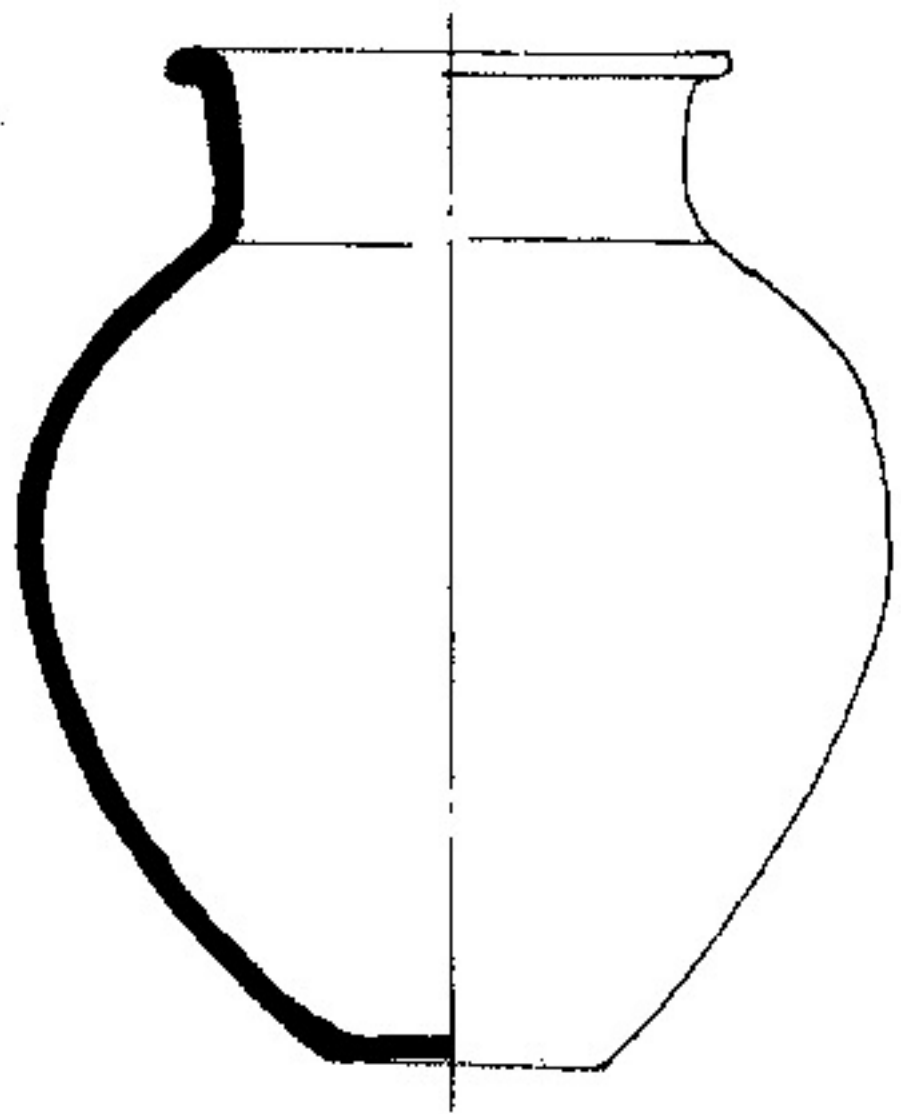
Ill. 3-13. Kültepe, Level 14, beaker



Beakers. Two beakers found in Level 14 constitute the second type of imported ceramic wares (figs. 3-19 and 3-20; ills. 3-12 and 3-13).³⁴ Found in the same cist grave as the beakers was a handmade beak-spouted pitcher in a shape foreign to central Anatolia (fig. 3-21).³⁵ It finds its closest parallel at EB II Tarsus.³⁶



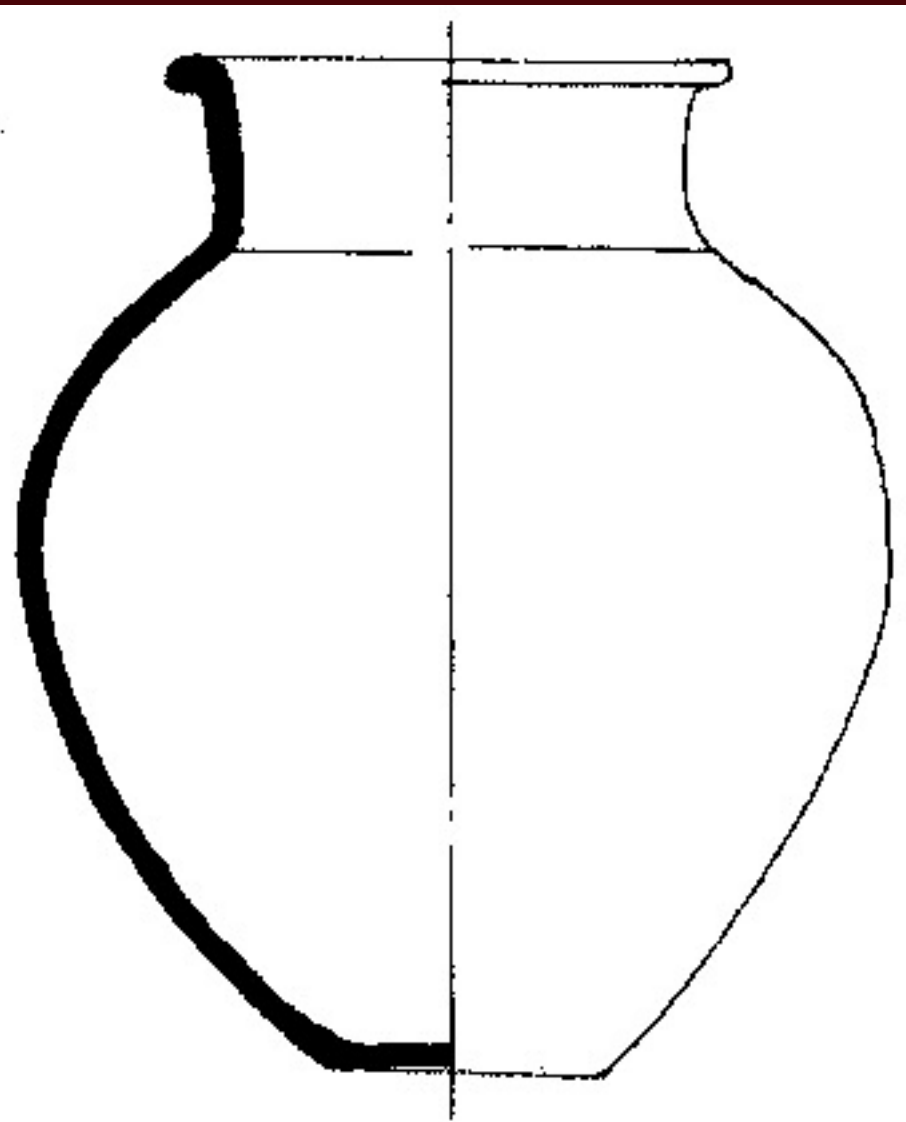
Fig. 3-13. Kültepe, Level 14, local imitation of Syrian flask



Ill. 3-9. Kültepe, Level 14, flask



Fig. 3-14. Kültepe, Level 14, flask



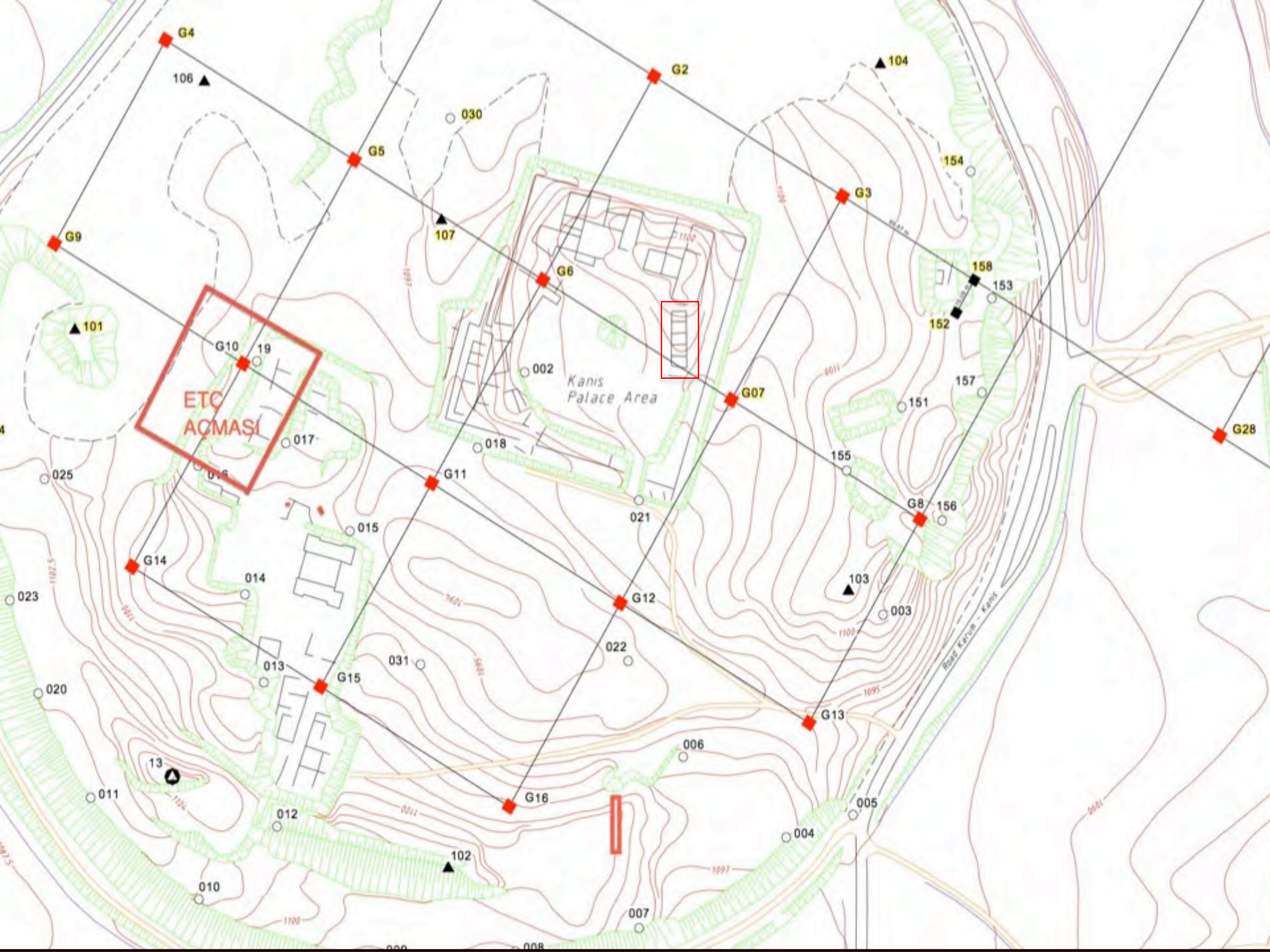
Ill. 3-9. Kültepe, Level 14, flask

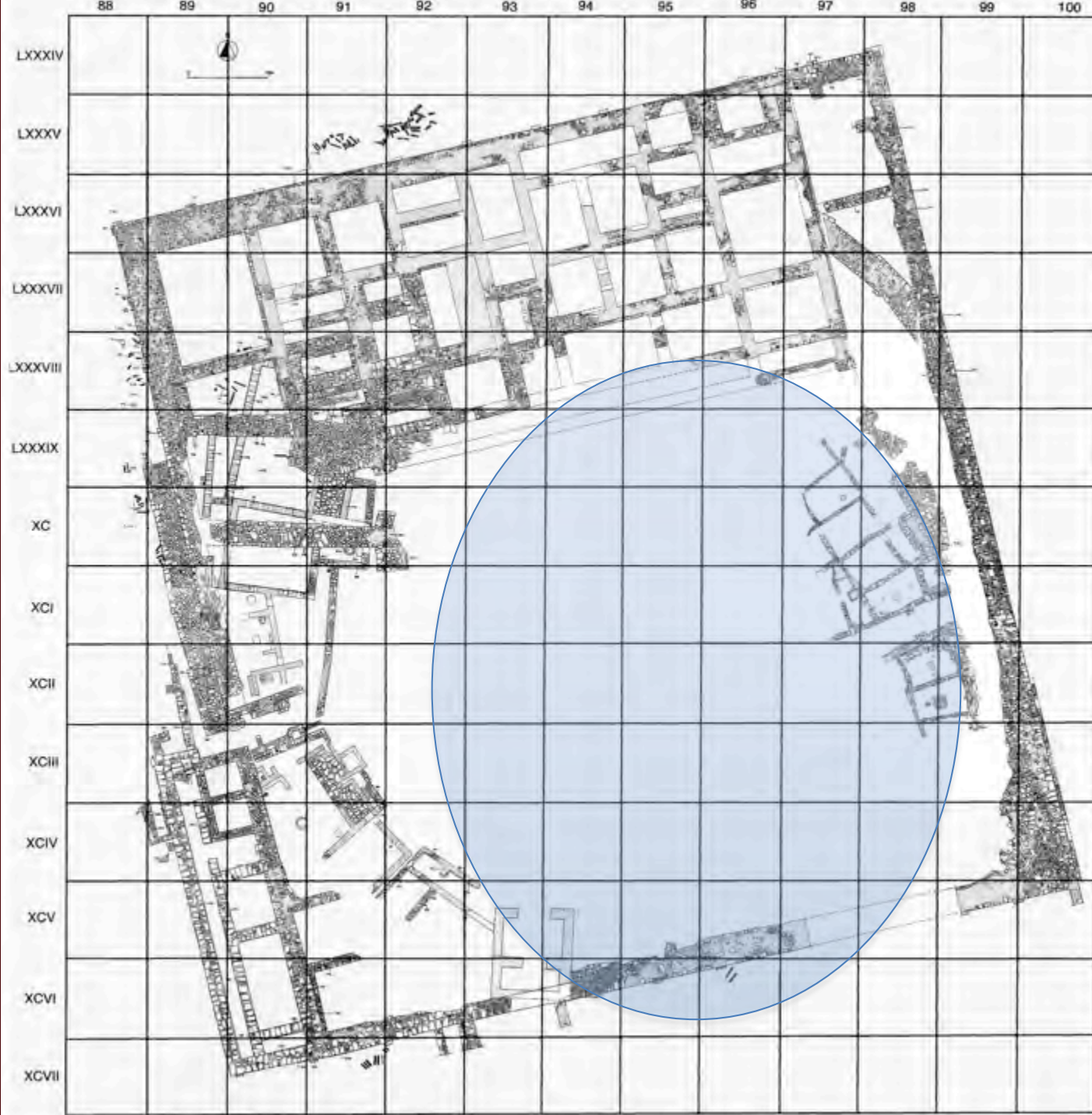


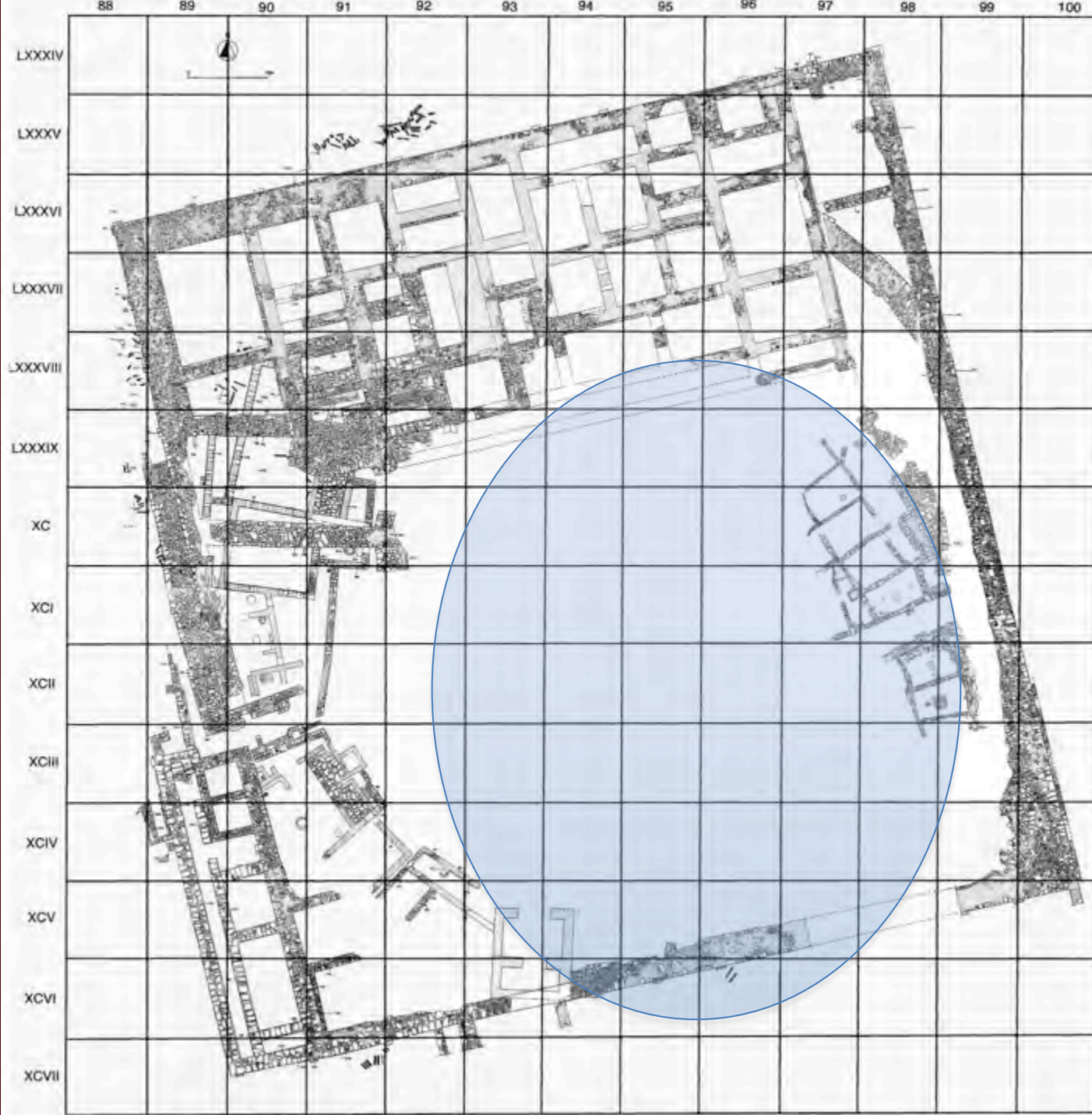
Fig. 3-14. Kültepe, Level 14, flask



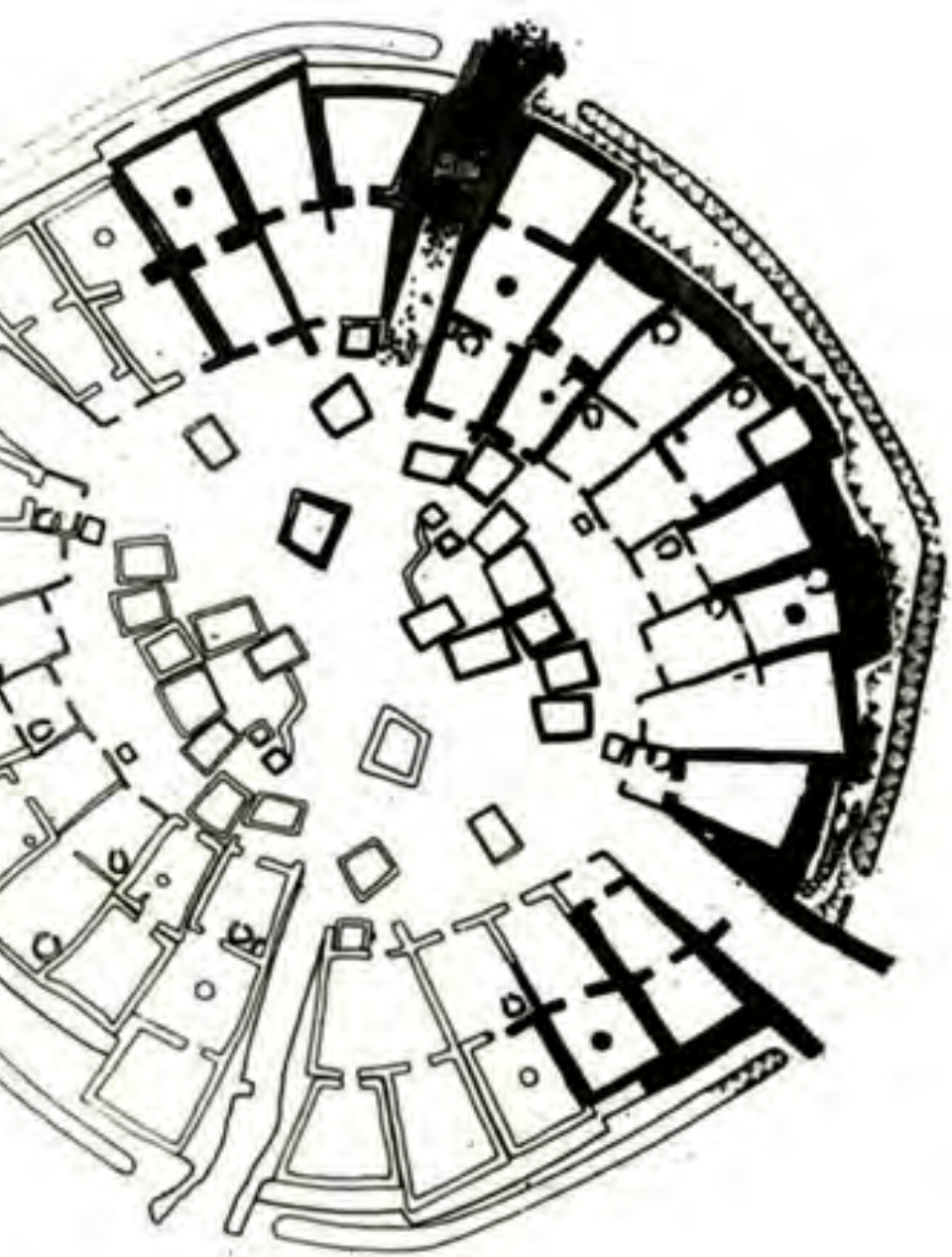
16
15
14



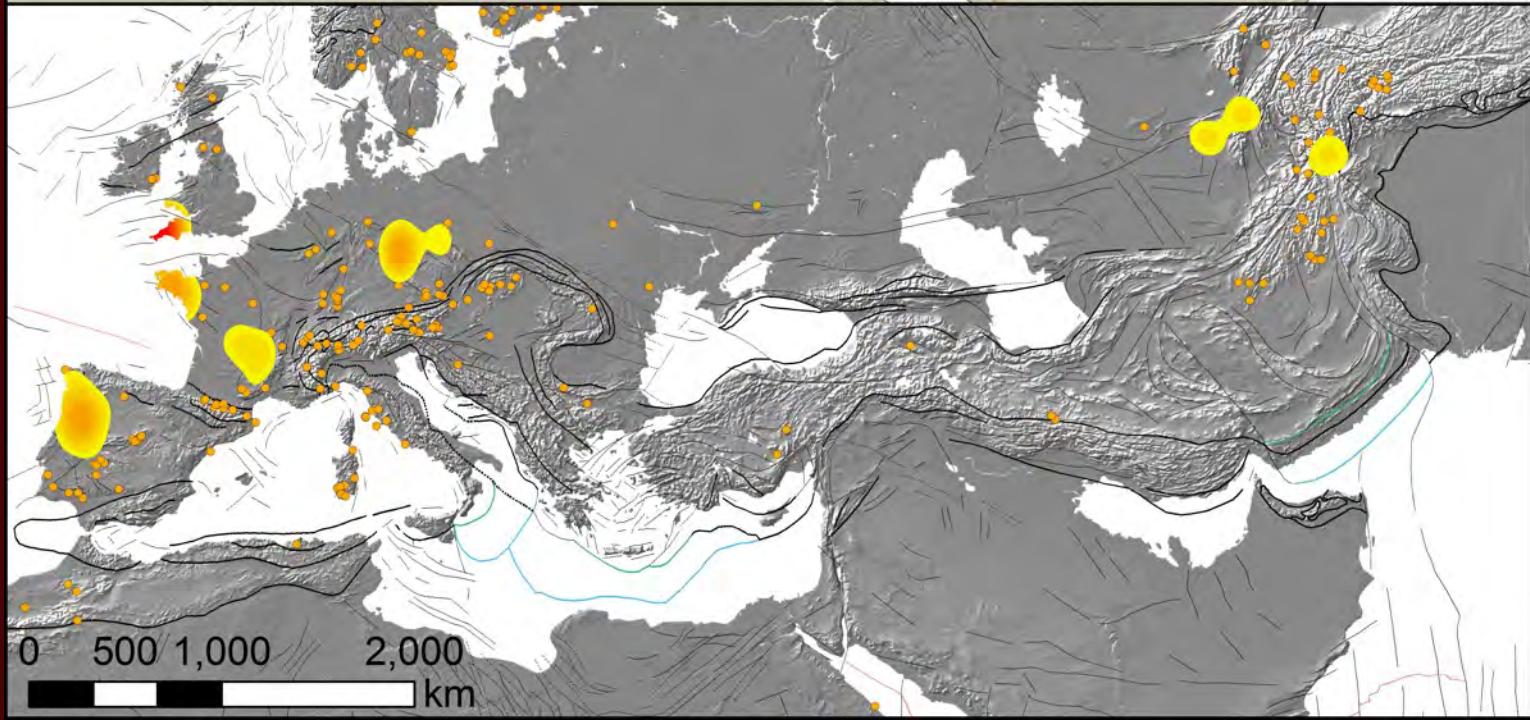








Demircihüyük (ITC I ve ITC II)





















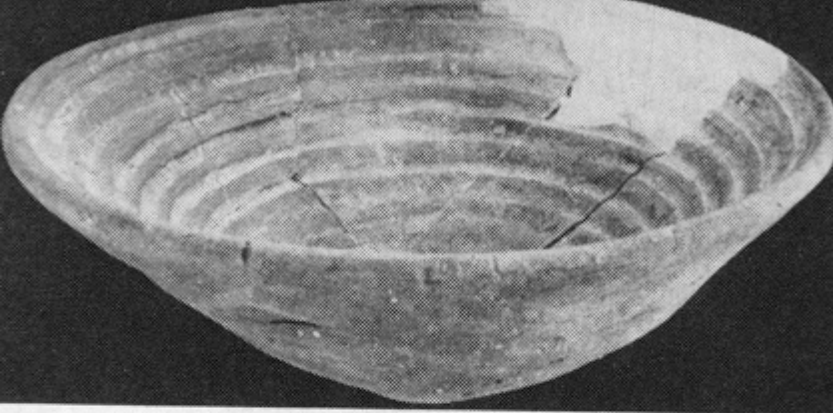


Fig. 3-24. Kültepe, Level 13, bowl

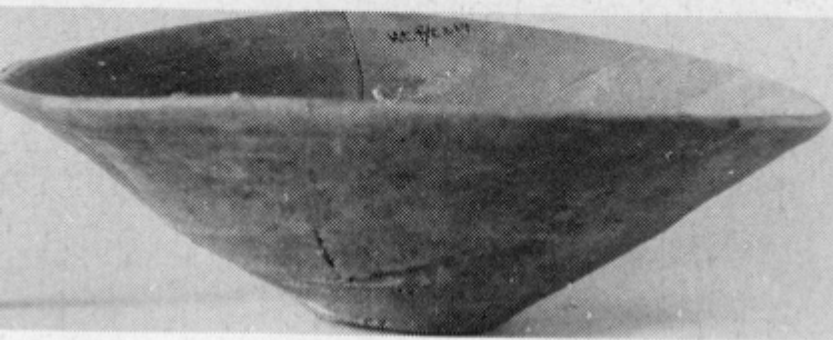


Fig. 3-25. Kültepe, Levels 11b-12, bowl

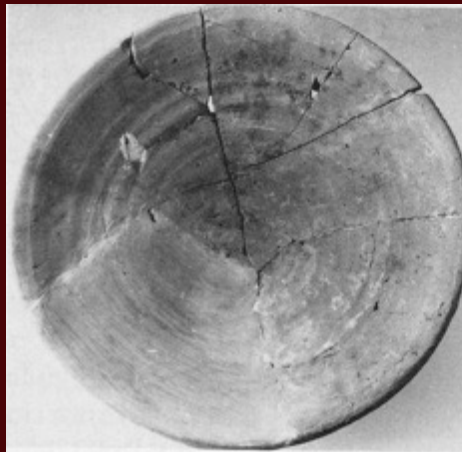


Fig. 3-22. Kültepe, Levels 11b-12, bowl

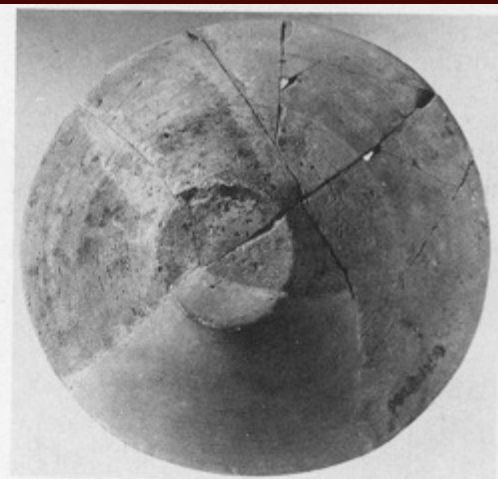
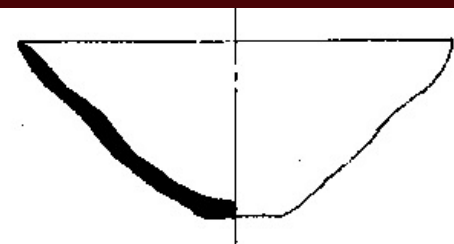


Fig. 3-23. Kültepe, Levels 11b-12, bowl



Ill. 3-14. Kültepe, Levels 11b-12, bowl



Ill. 3-15. Kültepe, Levels 11b-12, bowl

In Levels 11b and 12 at Kültepe there occur, together with monochrome and polychrome local wares, ceramic bowls³⁸ whose exact equivalents we find in Troy II b-c, d, f, g, and in Level III a-d,³⁹ as well as in Tarsus EB III.⁴⁰ All are wheelmade and thick-walled. Most have a plain, unslipped surface, although some are coated with a pale, reddish, or light brown wash. They exhibit great variety in size (figs. 3-22 to 3-24; ills. 3-14 and 3-15). A small number of these vessels occur at Kültepe for the first time in Level 13 (fig. 3-25), and none were found in EB II levels. All of them must have been imported from western Anatolia (Troy).

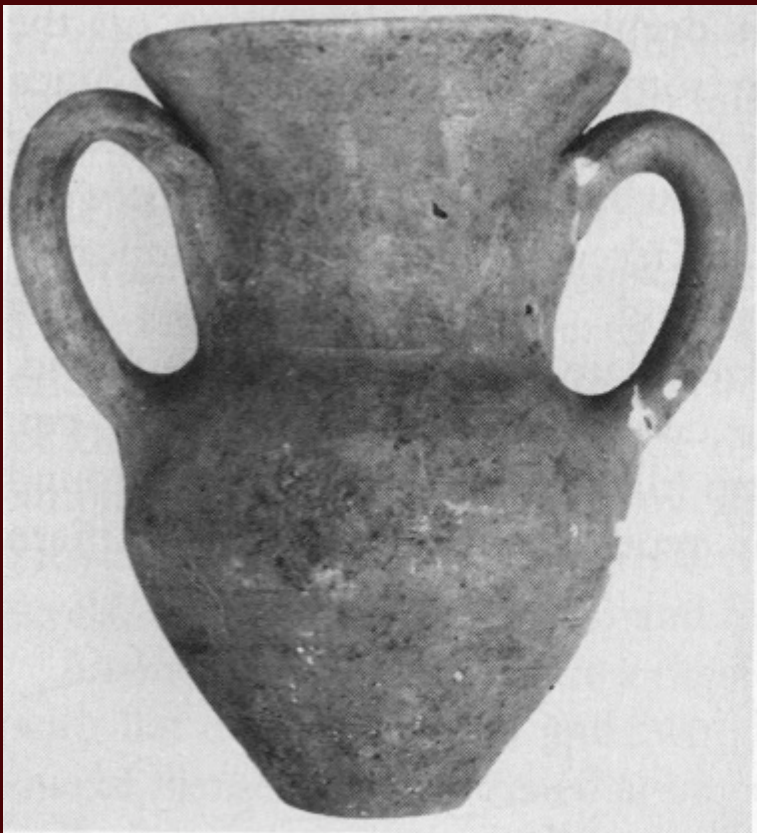


Fig. 3-31. Kültepe, Level 12, two-handled tankard



Fig. 3-32. Kültepe, Level 13, tankard

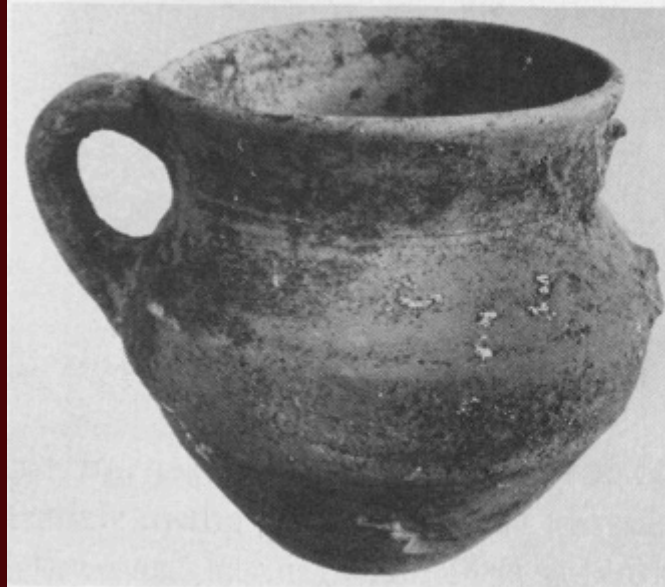


Fig. 3-33. Kültepe, Level 13, tankard



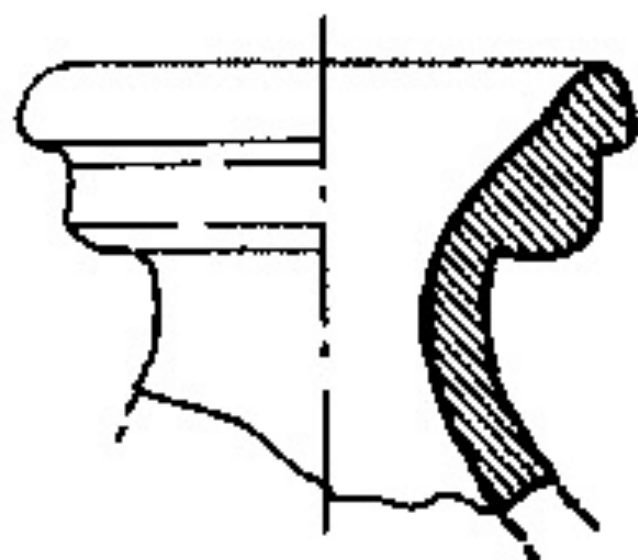
Fig. 3-31. Kültepe, Level 12, two-handled tankard



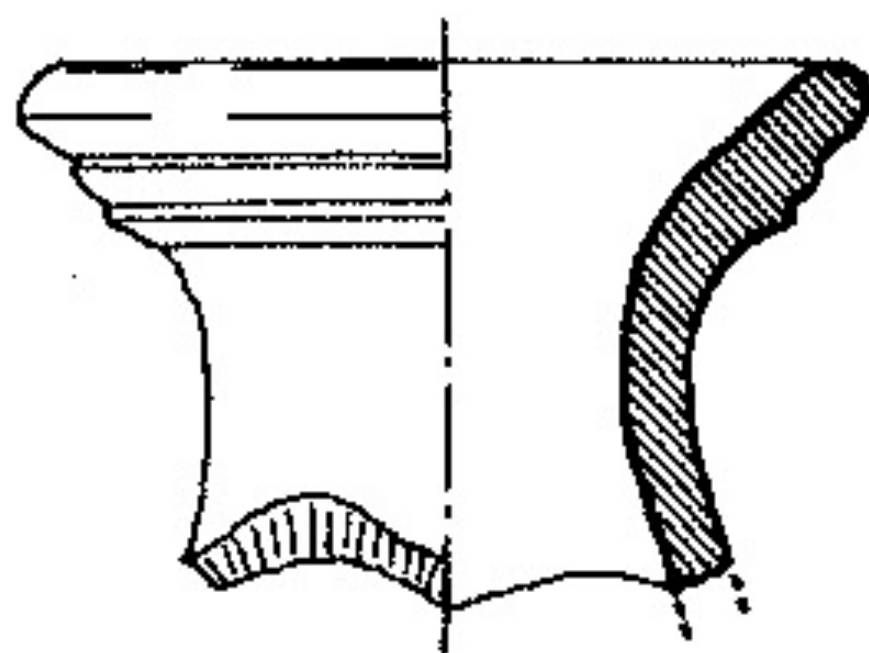
Fig. 3-32. Kültepe, Level 13, tankard



Fig. 3-33. Kültepe, Level 13, tankard



Ill. 3-4. Kültepe, Level 13, neck sherd from flask



Ill. 3-5. Kültepe, Level 13, neck sherd from flask

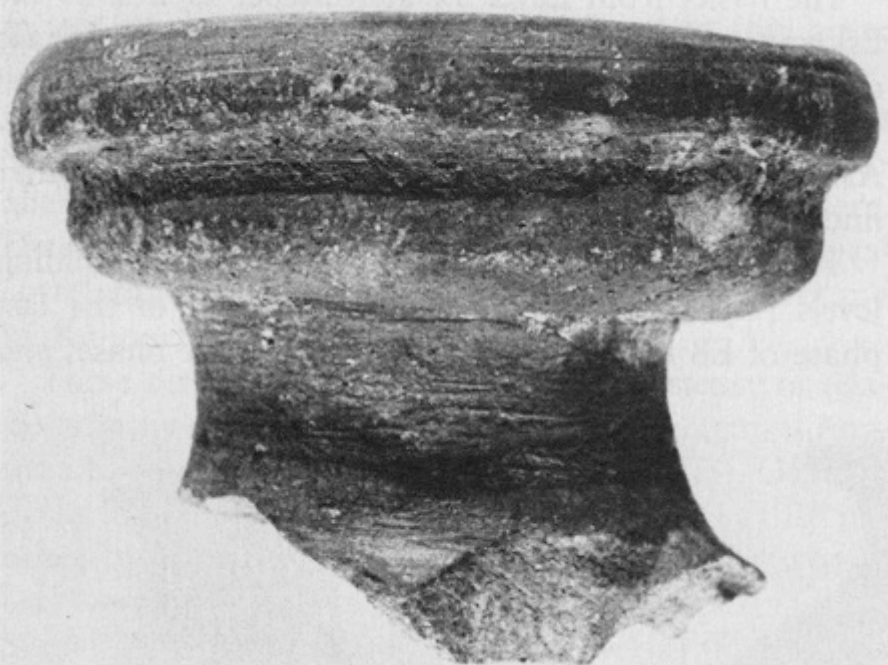


Fig. 3-7. Kültepe, Level 11b, neck sherd **13**

