

BAS TANRICA



Kültepe



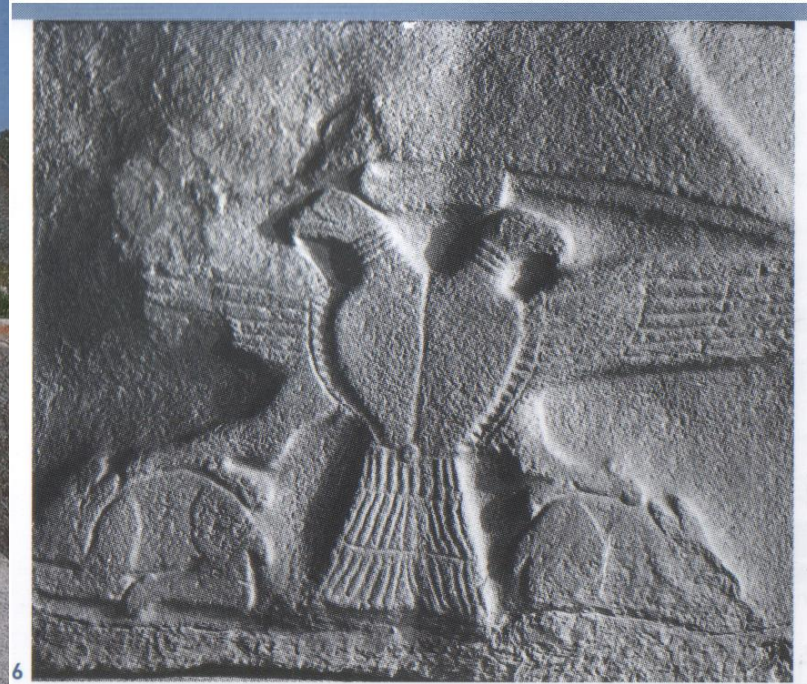
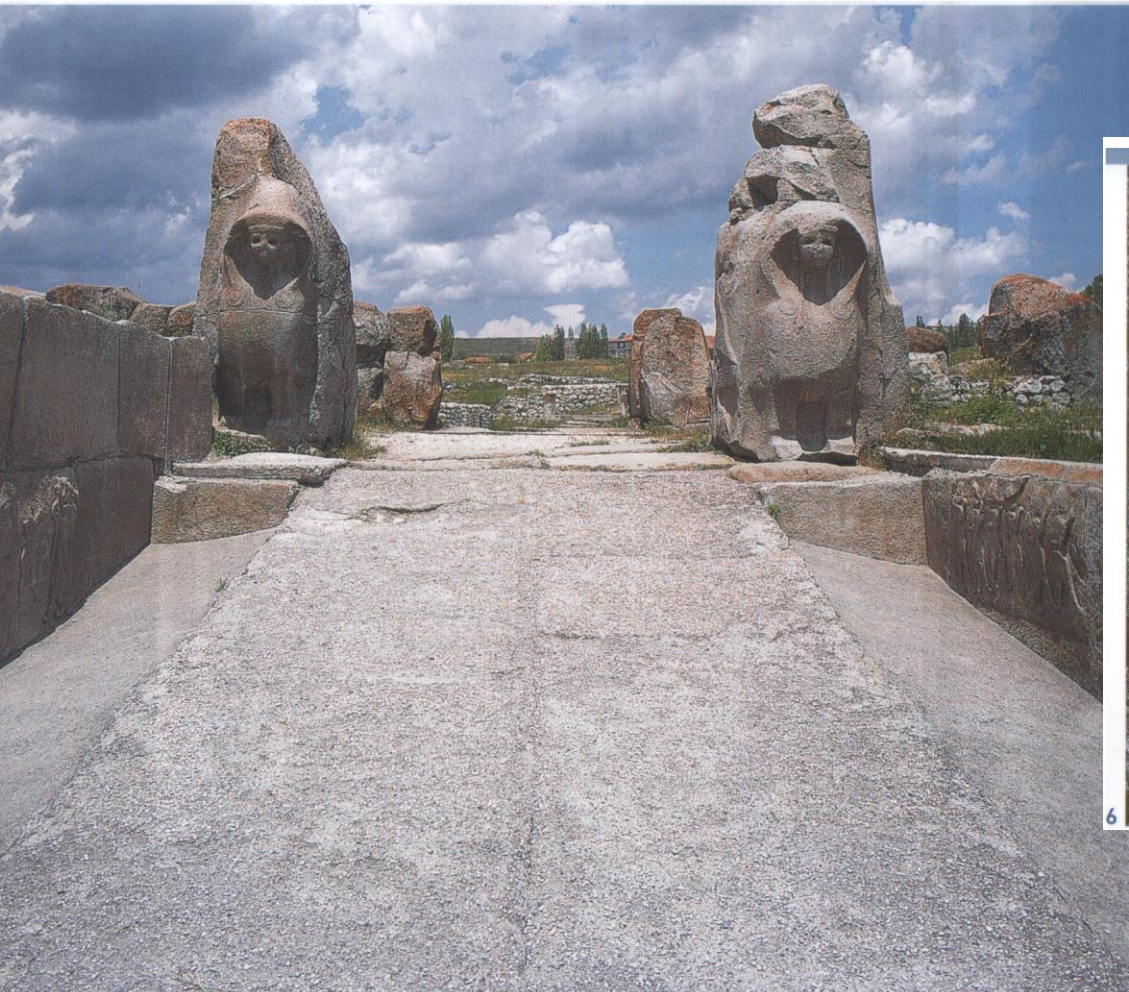




197 Drinking
shape of an ea
of Level II.

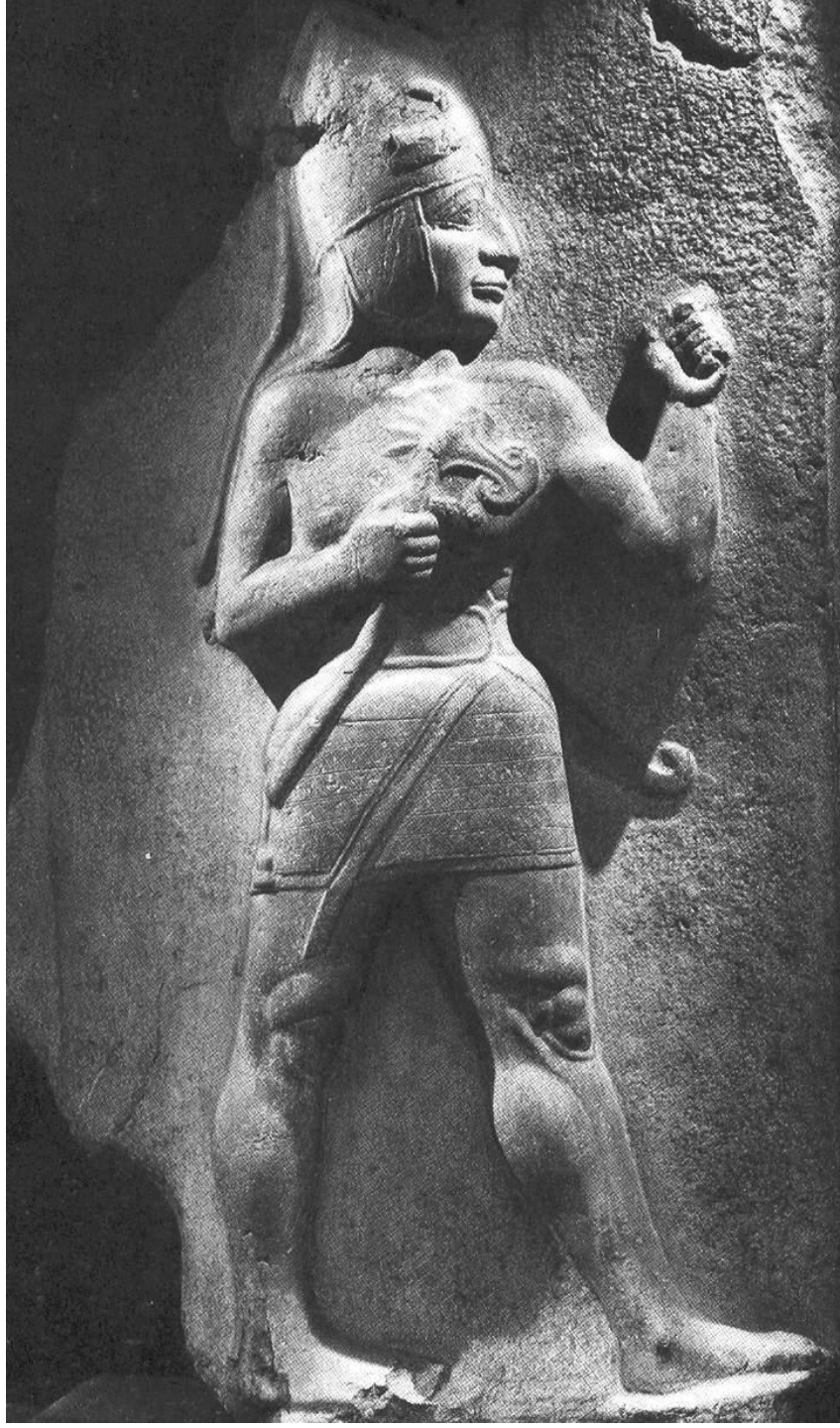


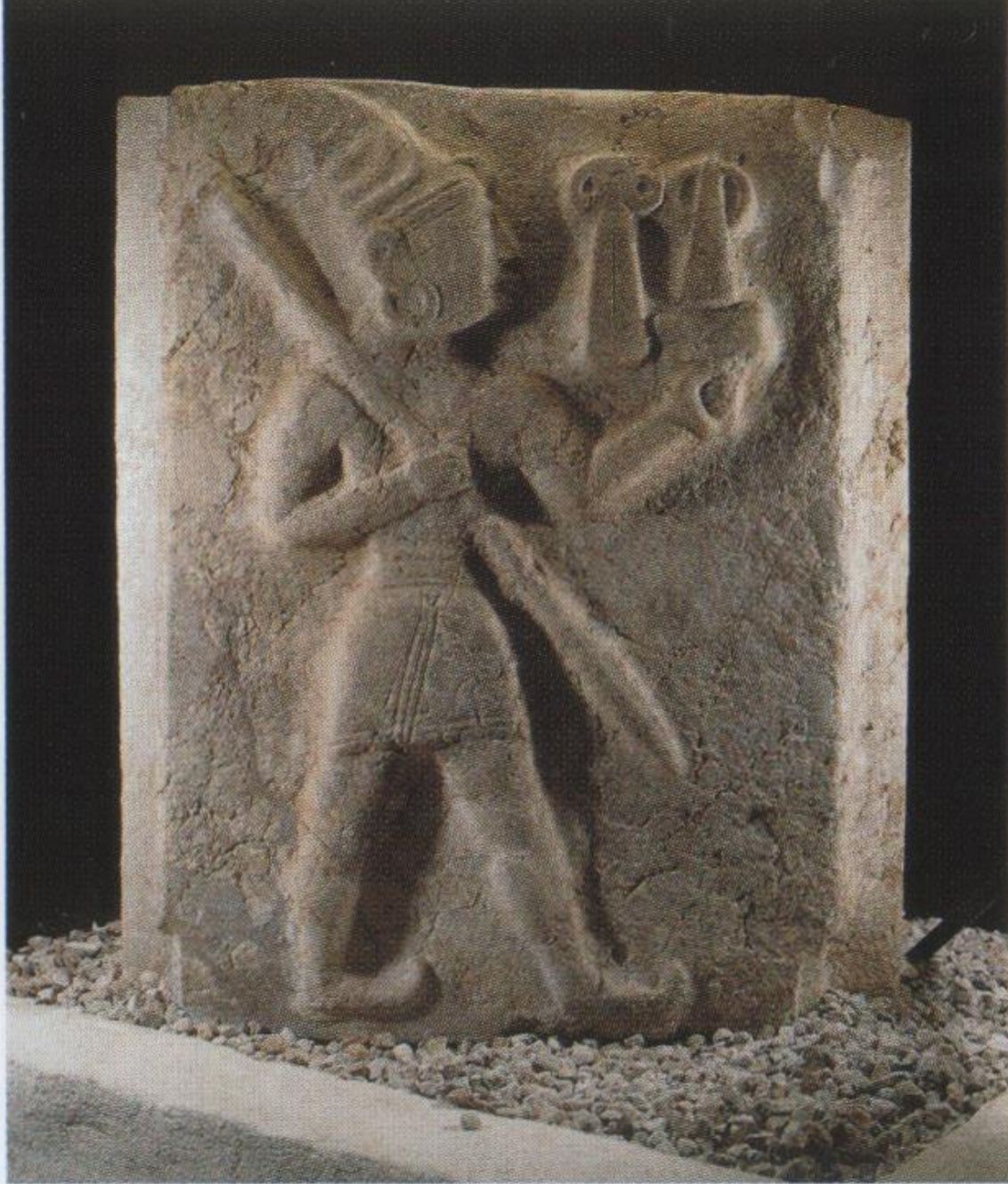




6

8 Das Sphinxenpaar von Alacahöyük (Foto Peter Gzwozd)

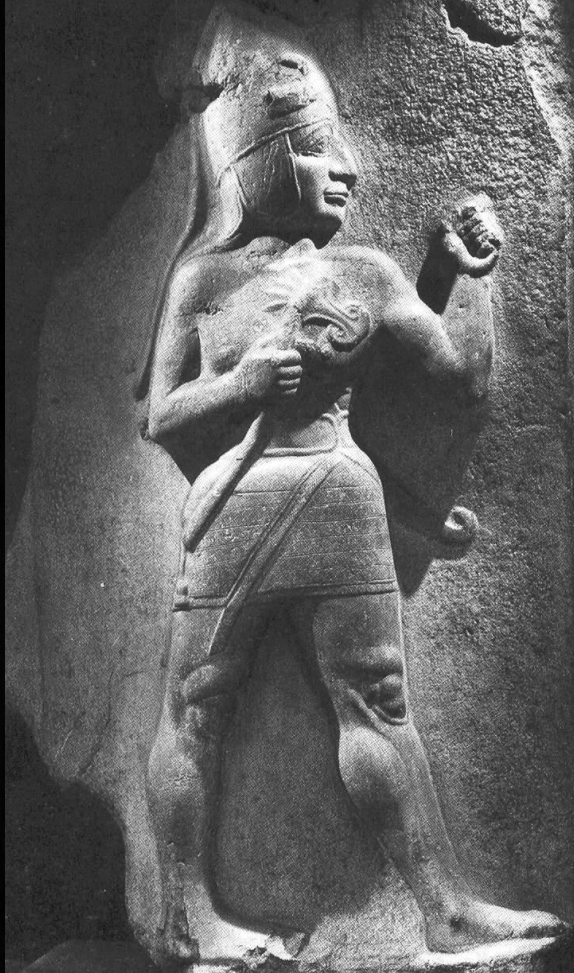




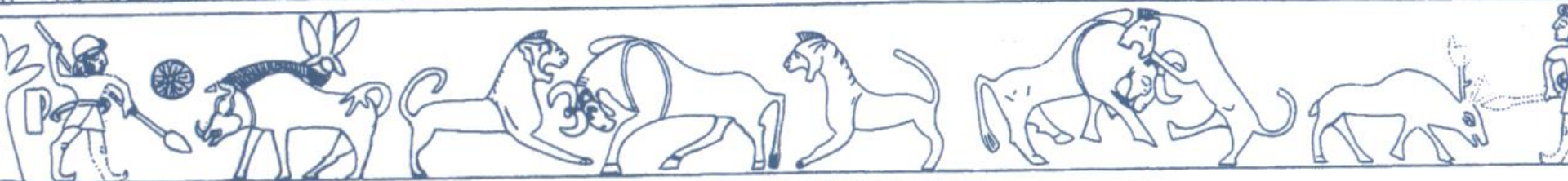
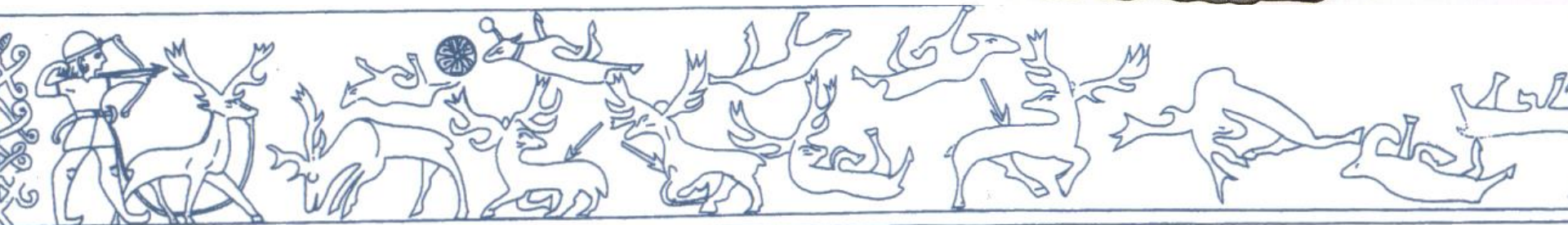
9

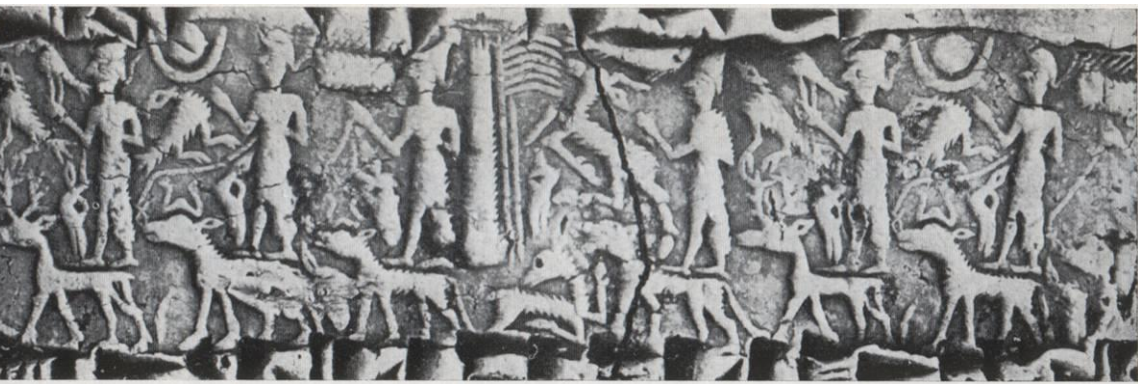
9 Die Tudhaliya-Stele aus Tempel 5





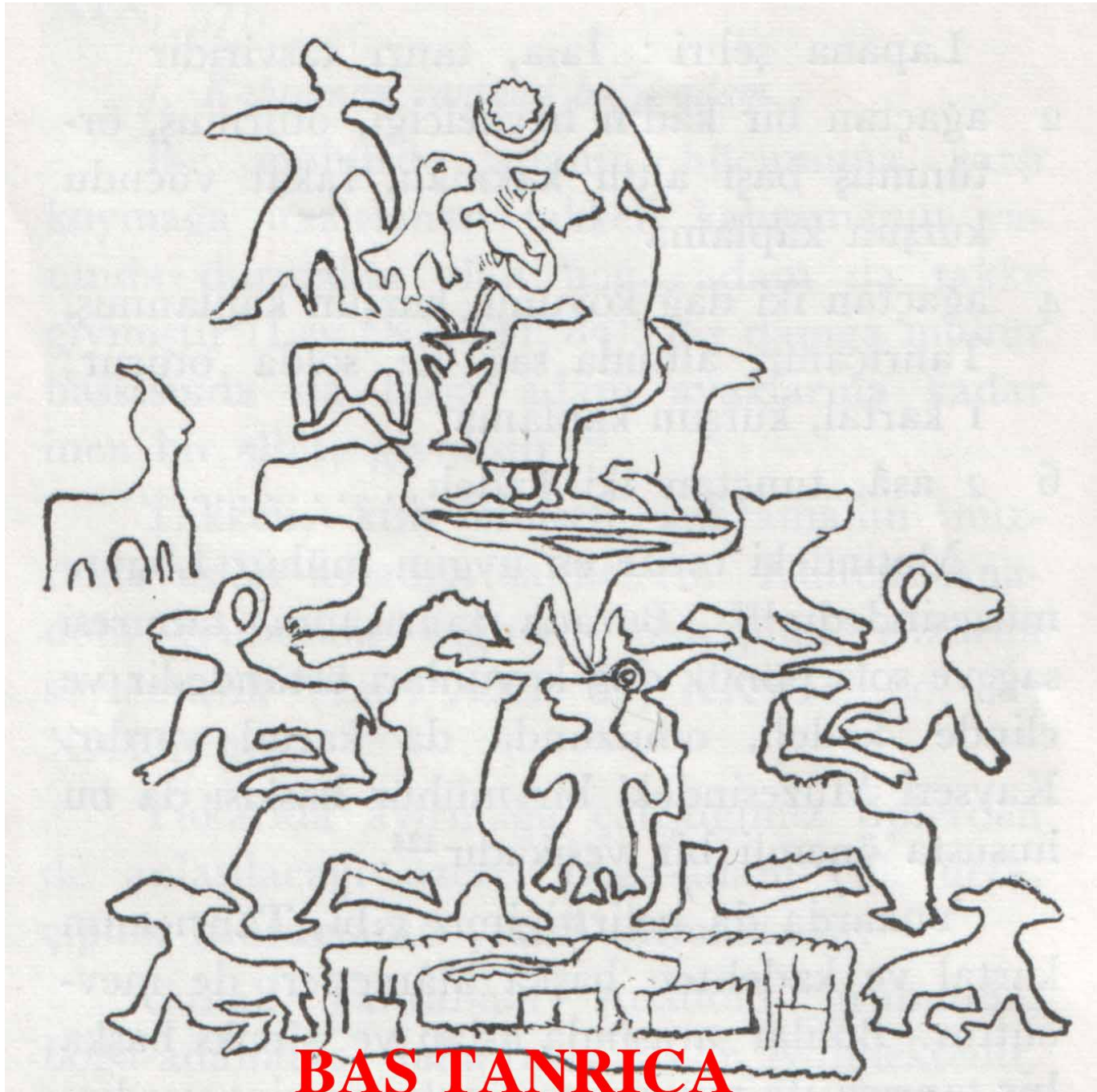








KIRLARIN KORUYUCU TANRISI



BAS TANRICA







49



7

7 Bulla des Großkönigs Mursili III. (Kat.-Nr. 141)





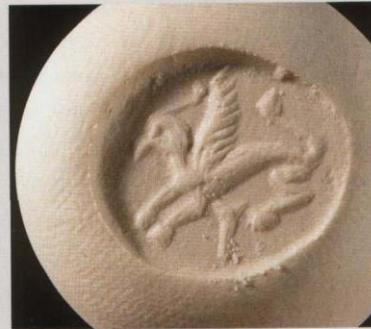
49



7



7 Bulla des Großkönigs Mursili III. (Kat.-Nr. 141)





7

7 Steatitrelief aus Çorum/Yeniköy (Kat.-Nr. 124)



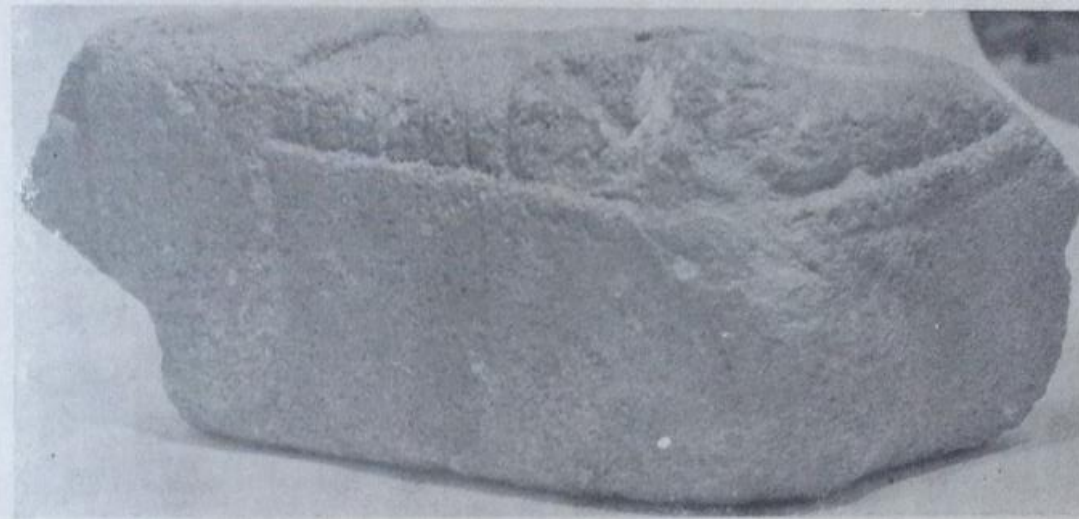
KIRLARIN KORUYUCU TANRISI

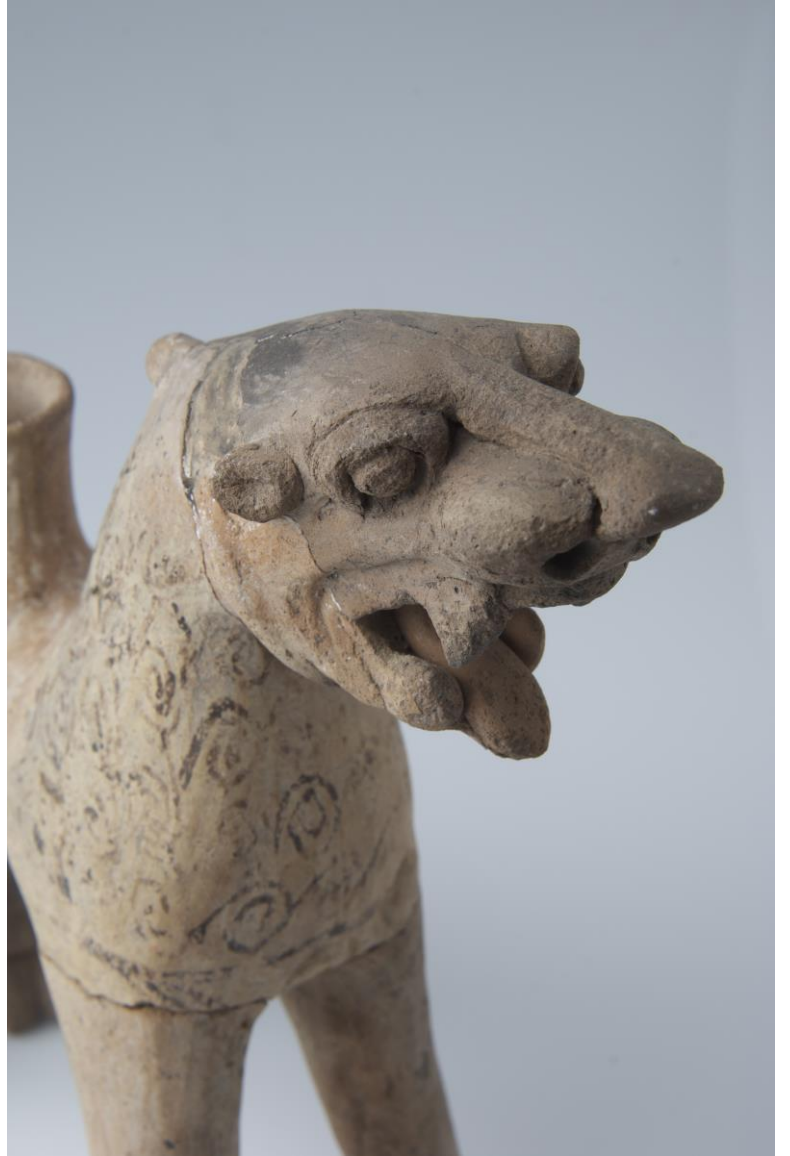




envelope in old Anatolian style, ceremony of the Storm God over serpent Illuyanka of Level II.













203



B. Drinking cups in the form of animal heads

Bull or oxen: In Karum Levels Ia-b and II these cups take only the form of a bull's head. This indicates that the bull, the sacred animal of the Weather God, was represented only with the bull-headed drinking cup in Kültepe. The monochromatic bulls' head rhyta from level II are different in such details as the shape of the horns, muzzle, forehead and in general style from those found in Level Ib. The halterless rhyton from Level Ib is more naturalistic than the rhyton with halter from level II, a level in which all of the heads have halters. The rims of two bulls' heads from Level II are tri-

203-206 Drinking cup in the form of a bull or oxen head of Level



Kultgefäß in Form eines Stierkopfes aus
tamonu (Kat.-Nr. 102)



204

205

206

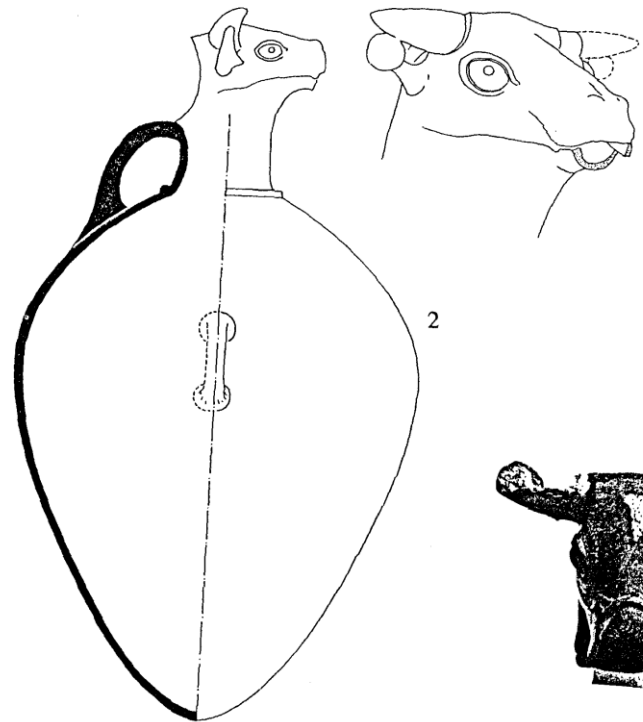




179 Zoomorphic pitcher of Level Ib. Short neck with wide spout ending in a bull's head. On upper body impressions of "sign royal" stamp.

187

ii. The art of the Assyrian trade colony period in Kanis: Pottery







192

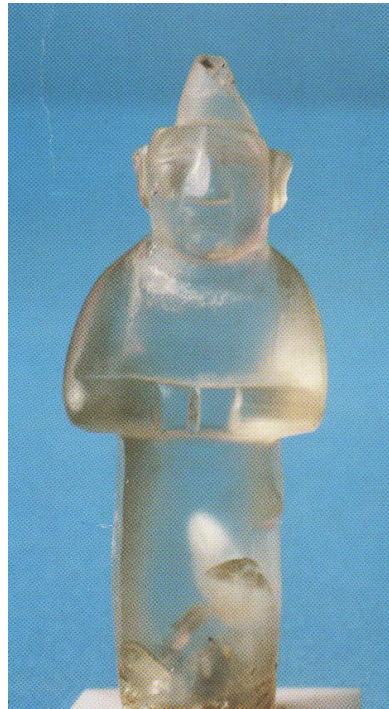


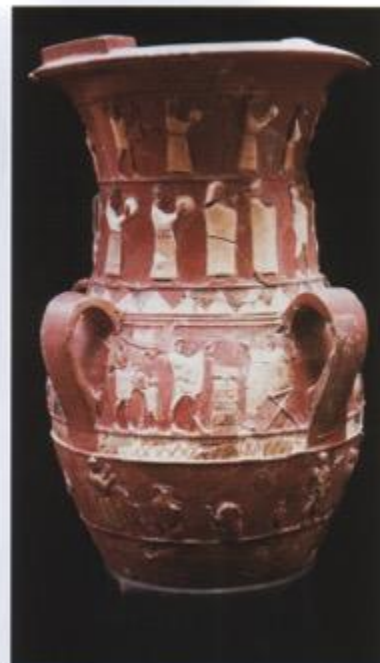
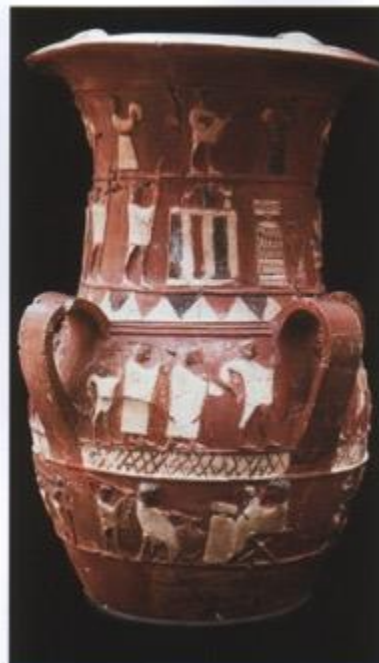
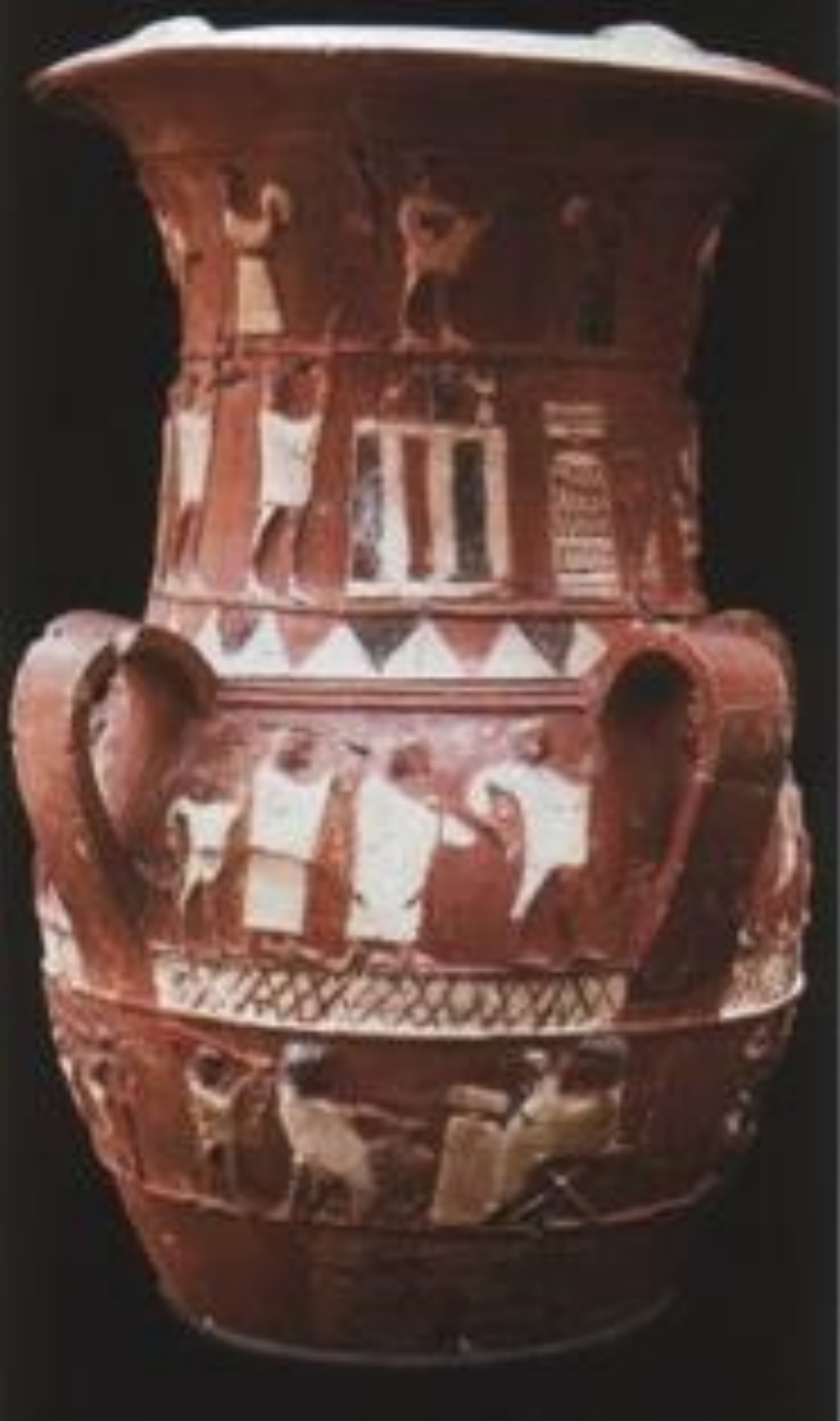
1





217
218







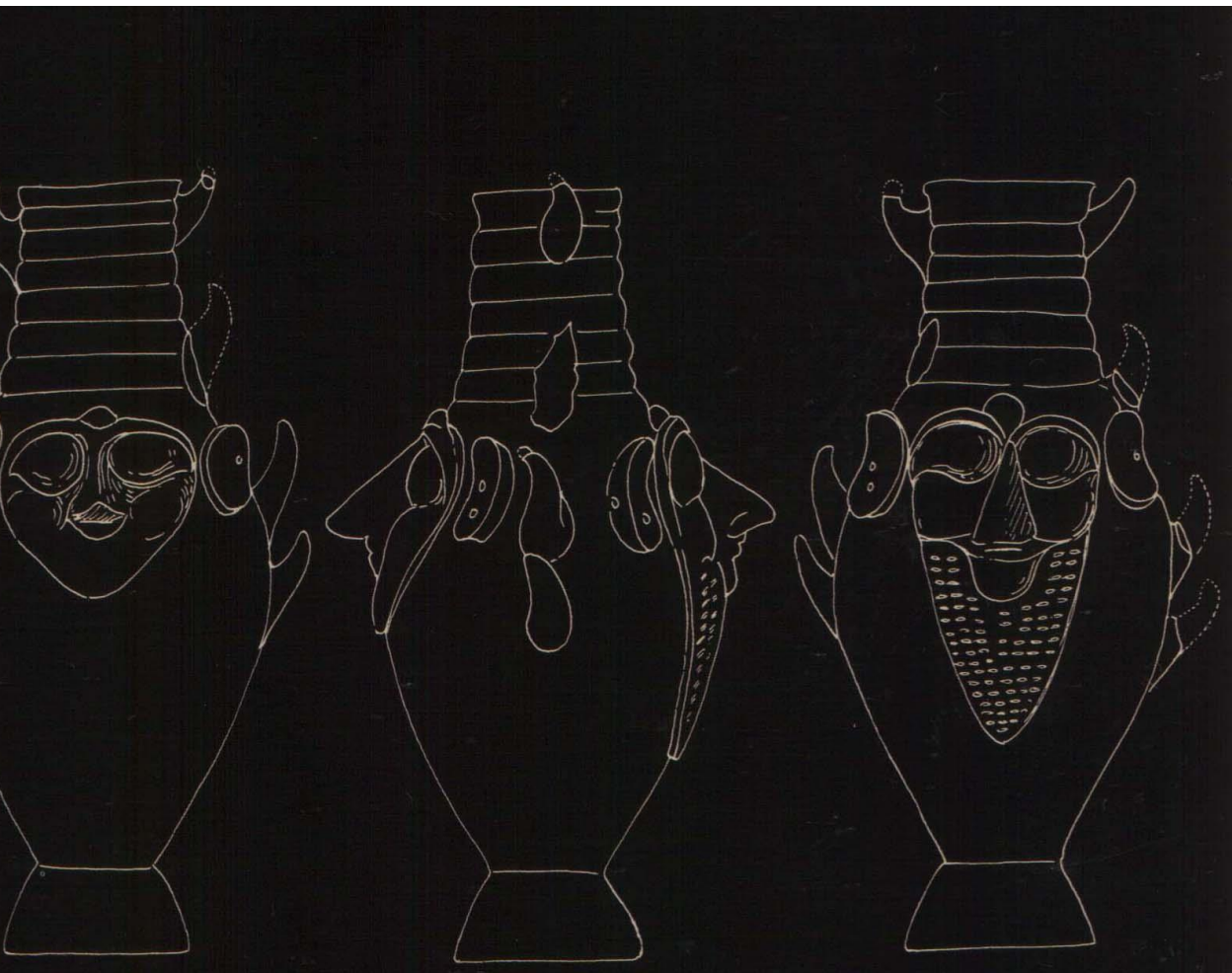
229



231



230







188



187

187 Vase with four
bull-protomes of Level Ib.



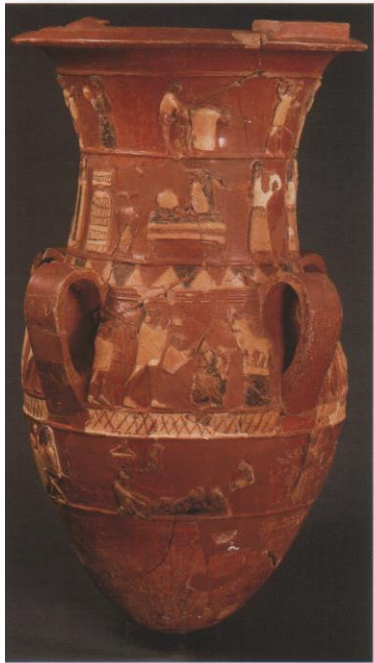
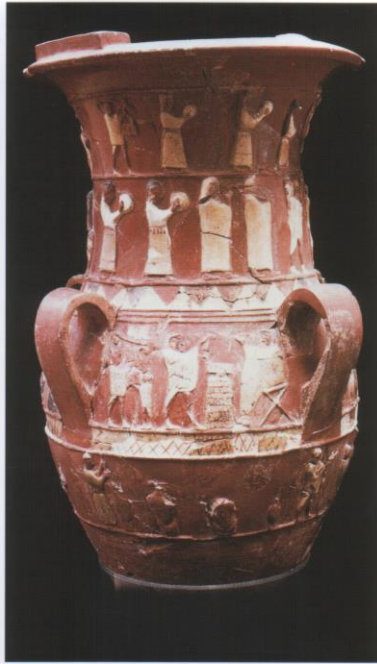
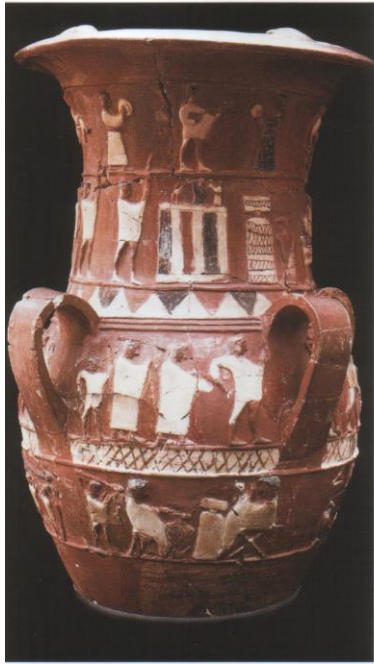
188



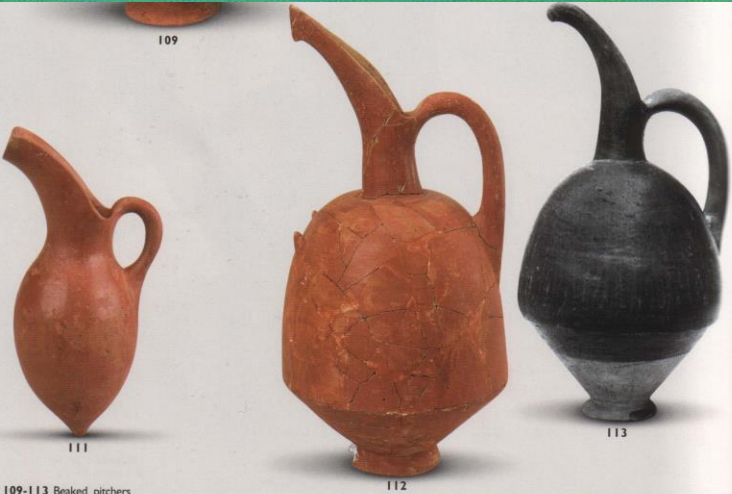
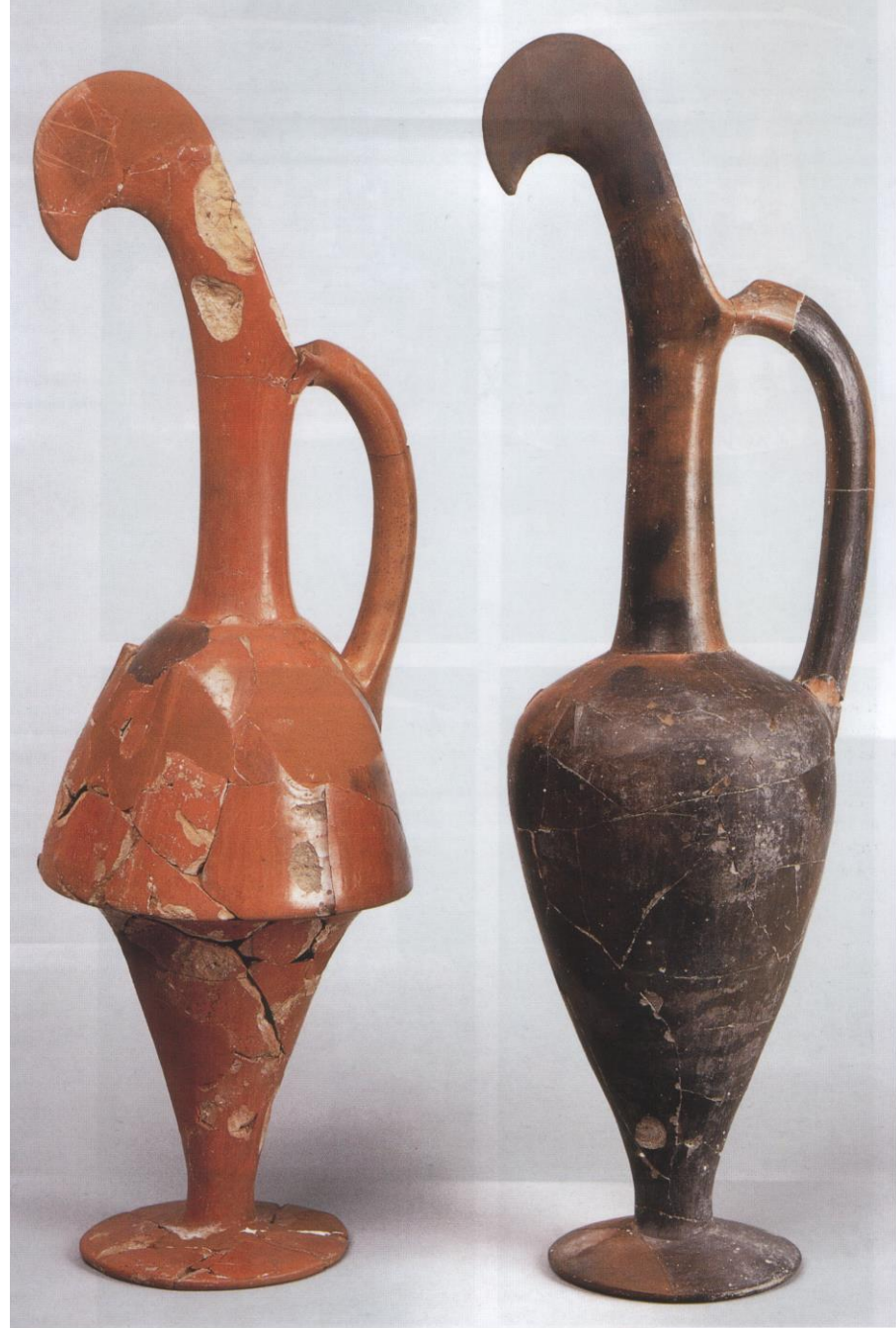
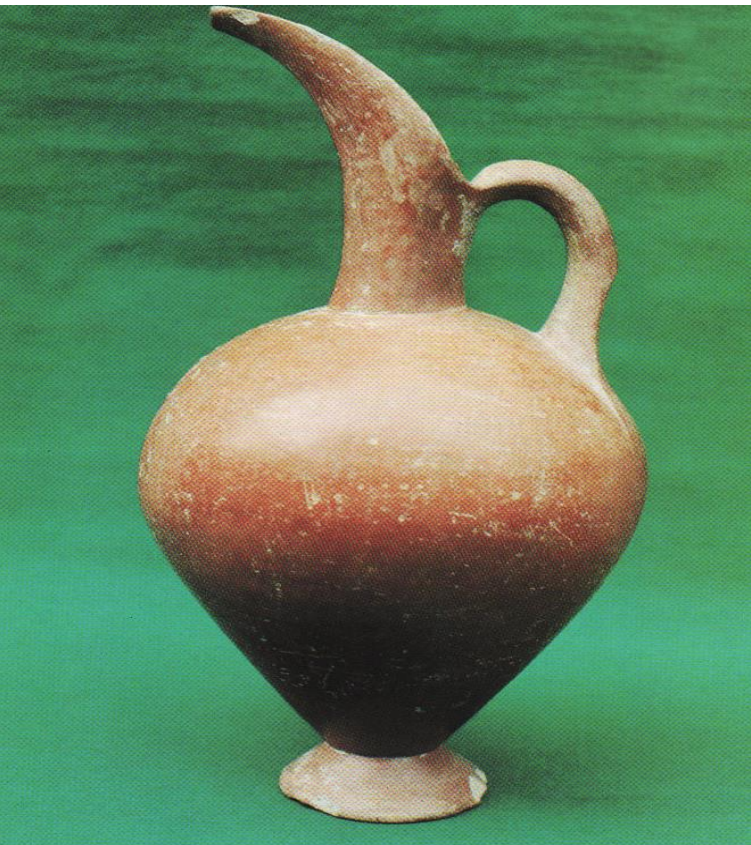
187

187 Vase with four
bull-protomes of Level Ib.





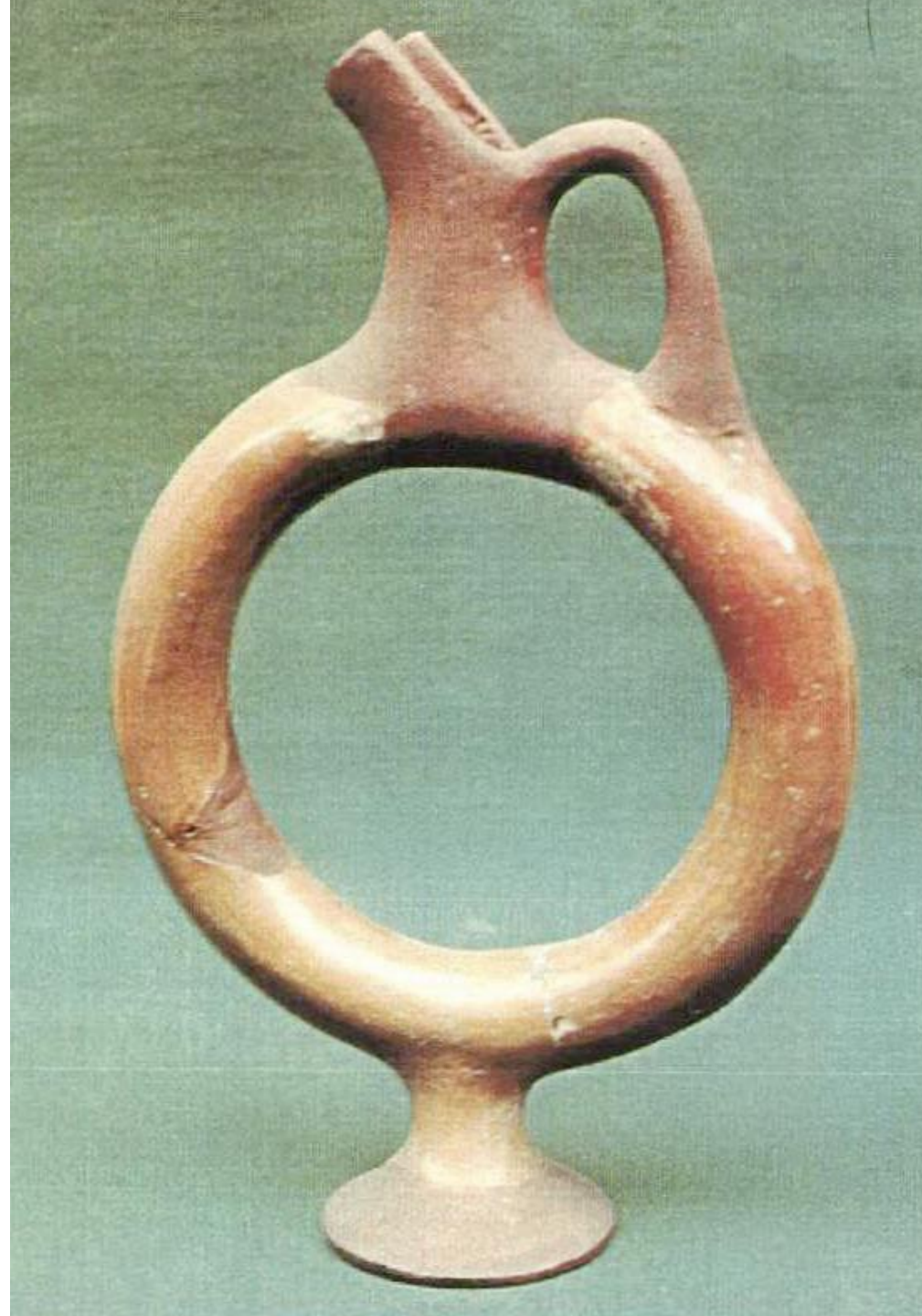
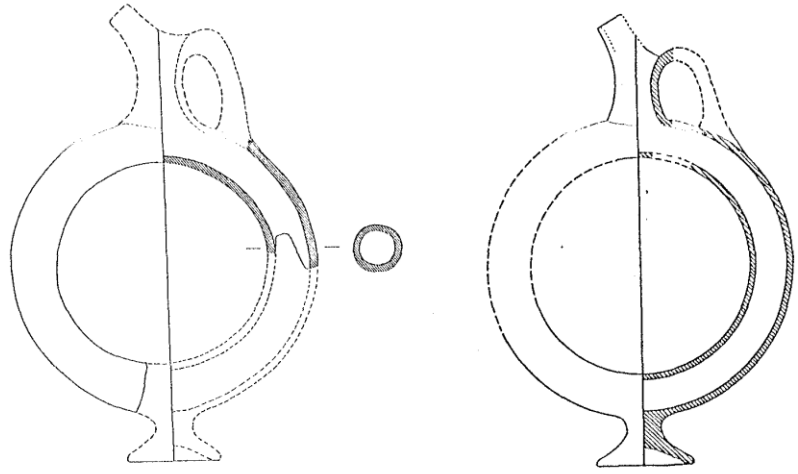




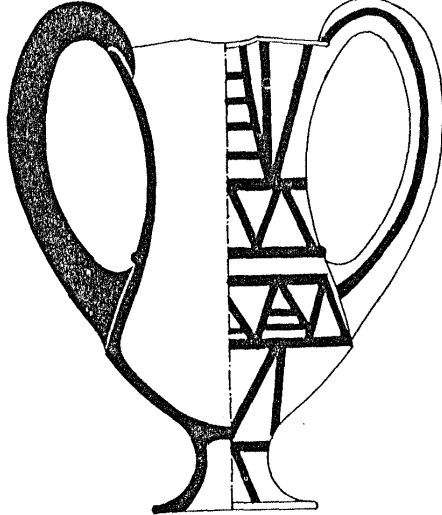
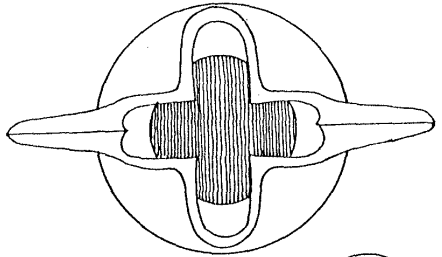
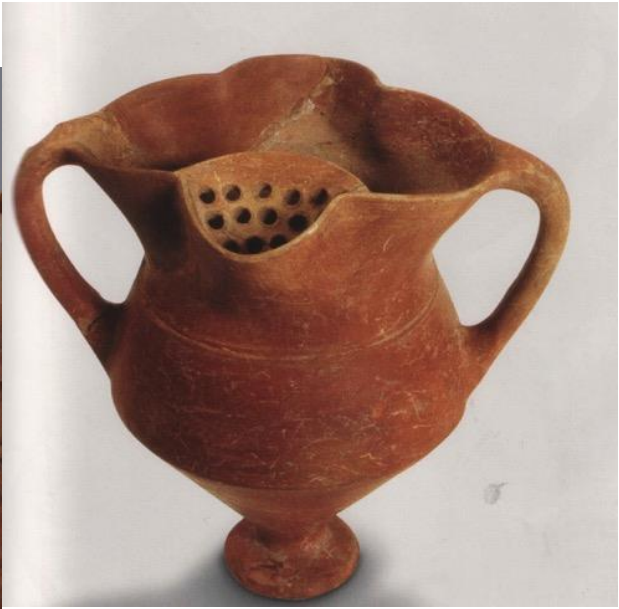
1 Zwei Schnabelkannen für Trankopfer, die Metallvorbilder nachahmen, aus Inandiktepe

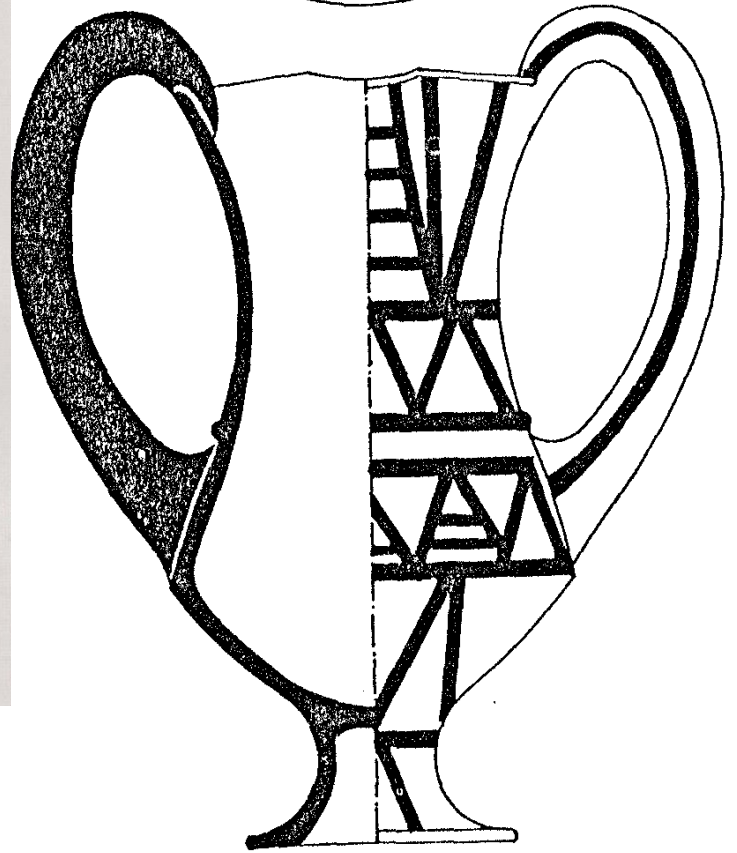
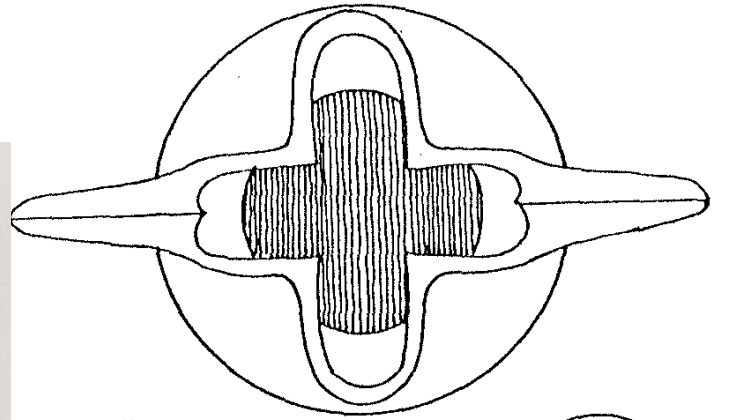
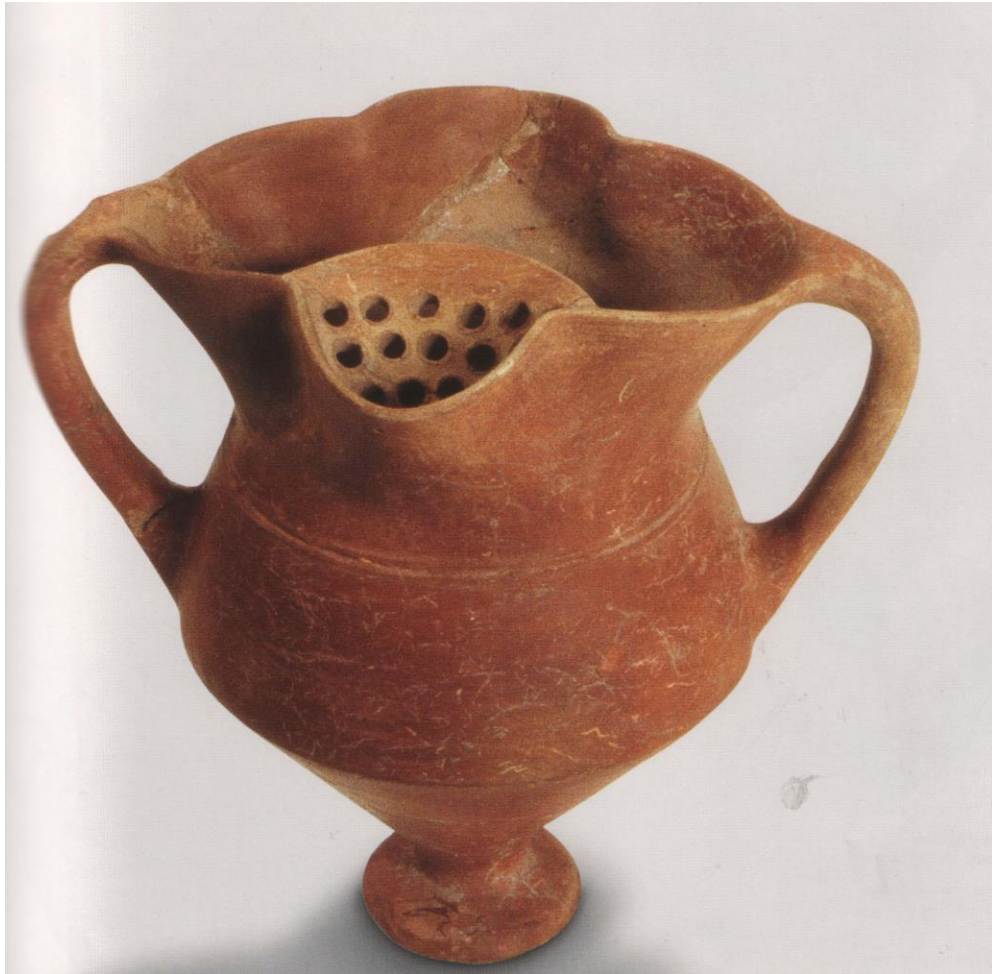
















74



75







