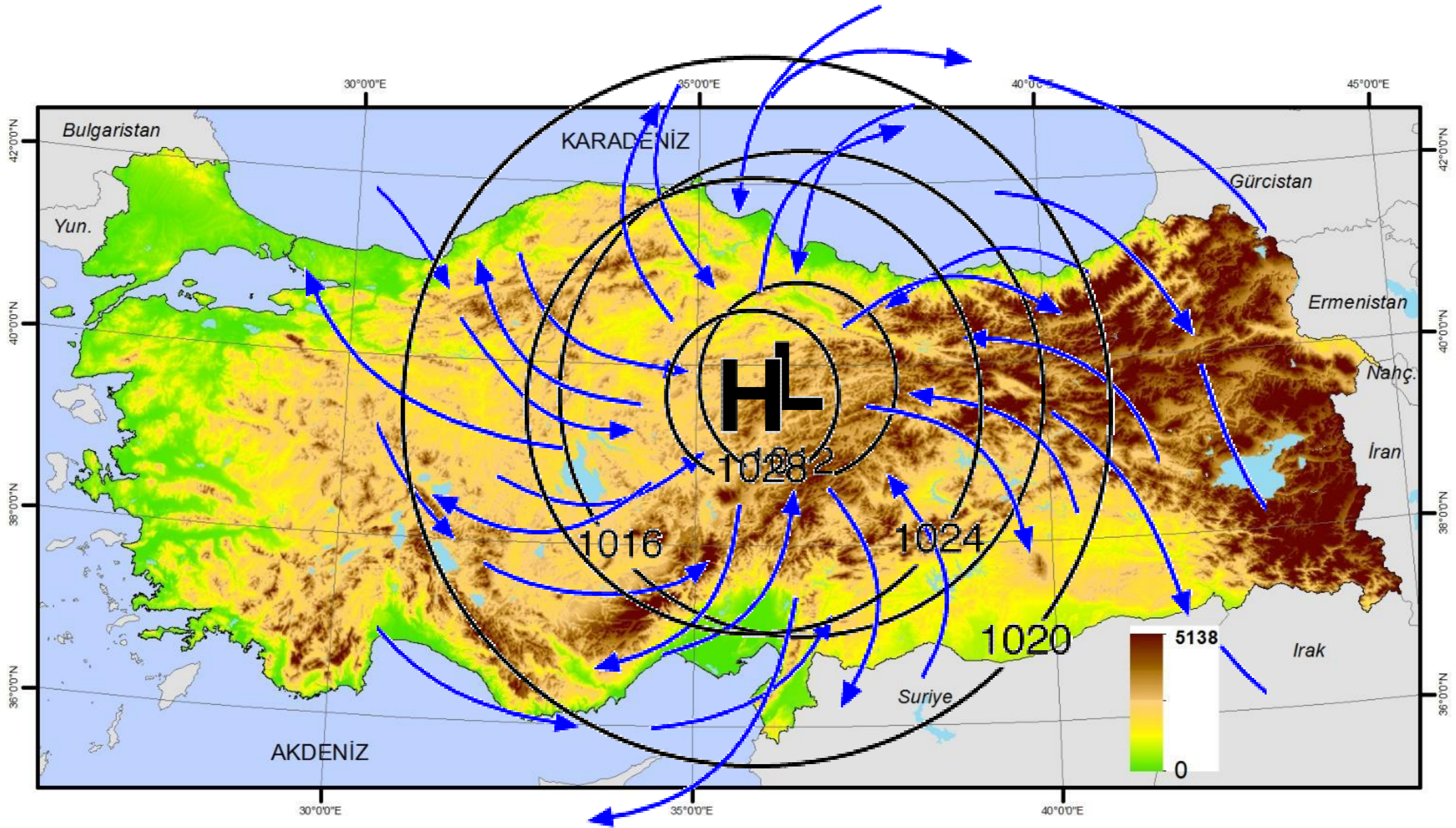


DÜNYA ve TÜRKİYE İKLİMİ

Yrd. Doç. Dr. Erkan Yılmaz

- Türkiye'de Rüzgarlar
- Türkiye İkimleri



Rüzgarların Rölyef İle İlişkisi

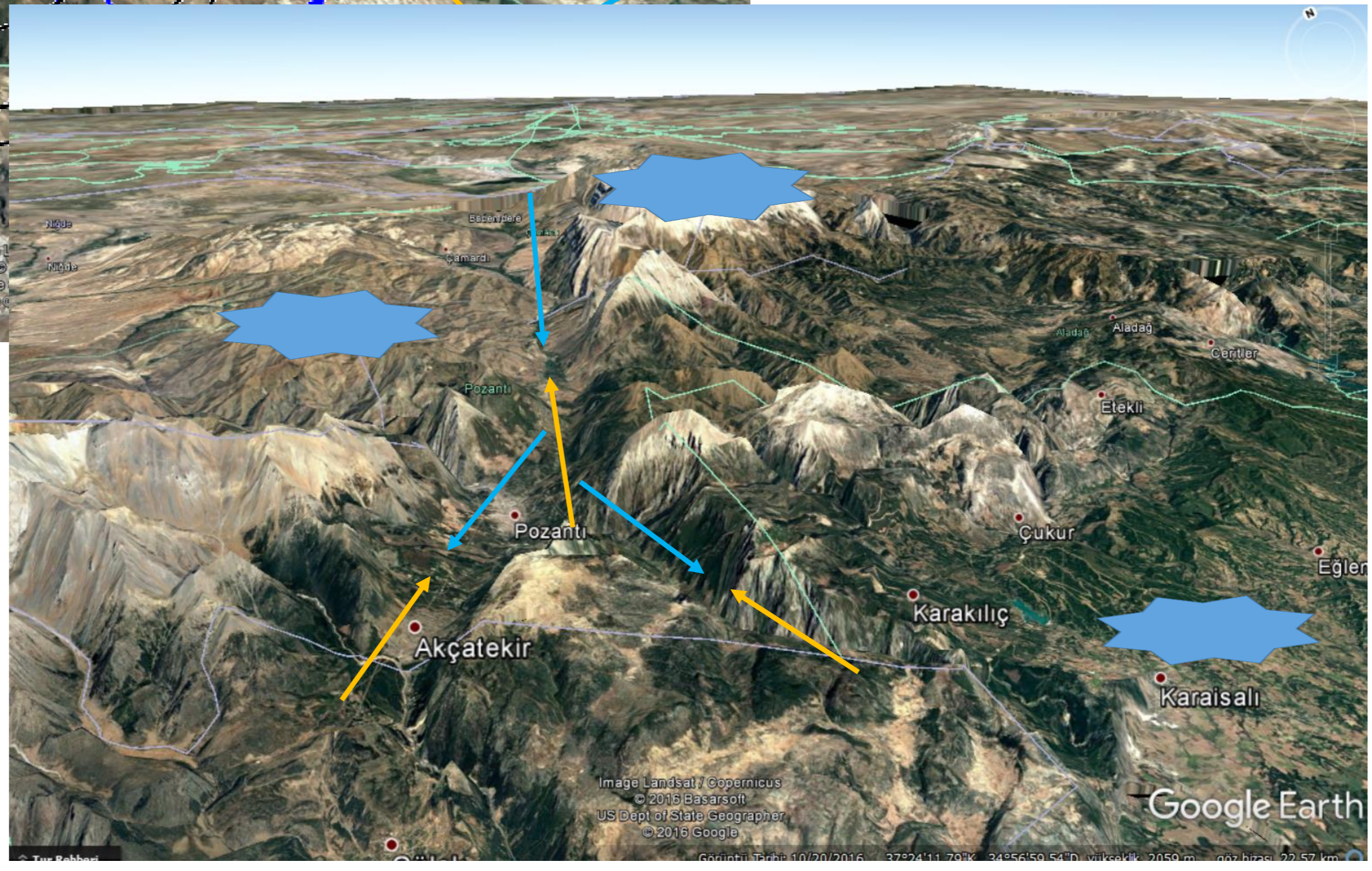
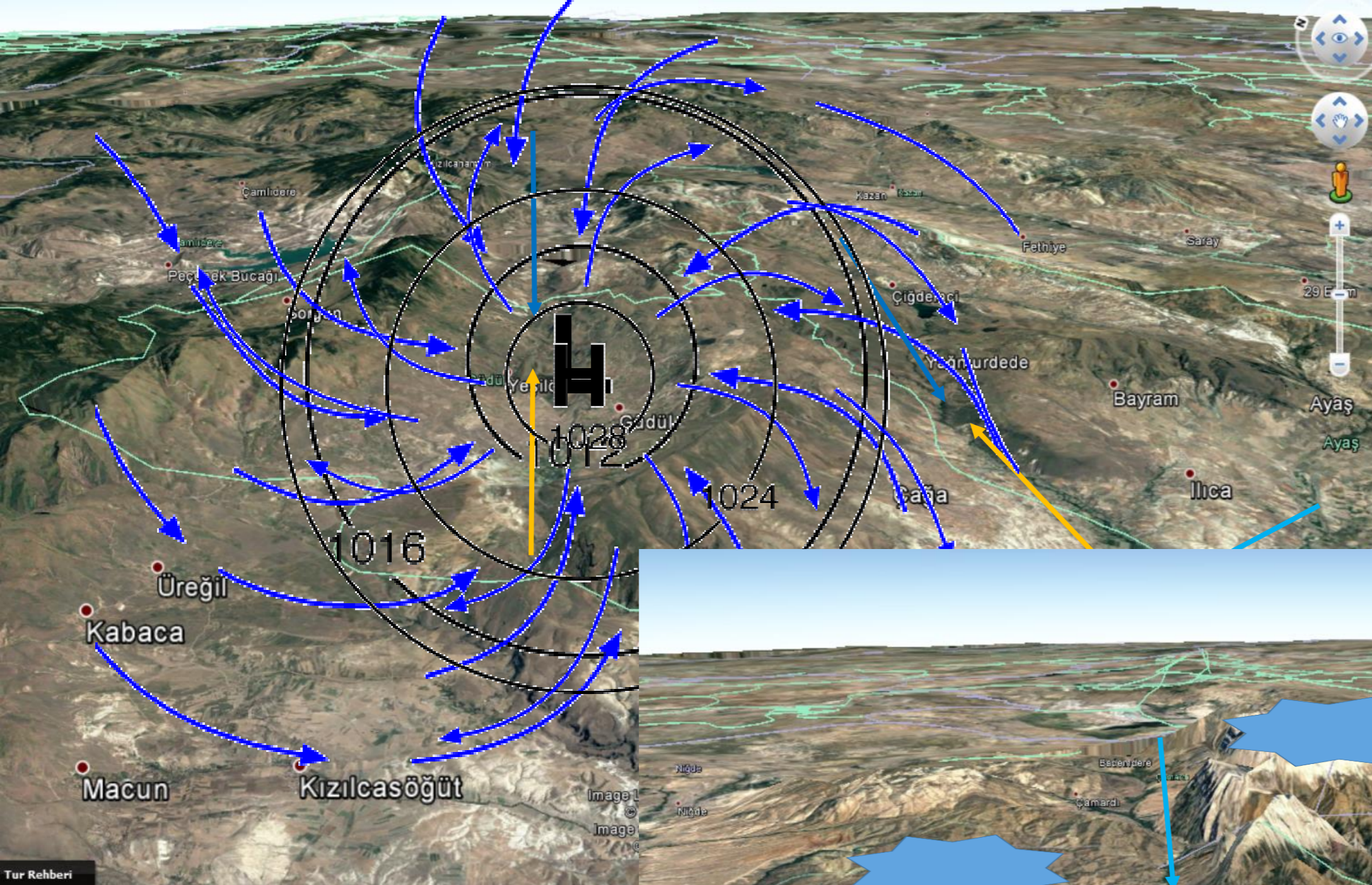
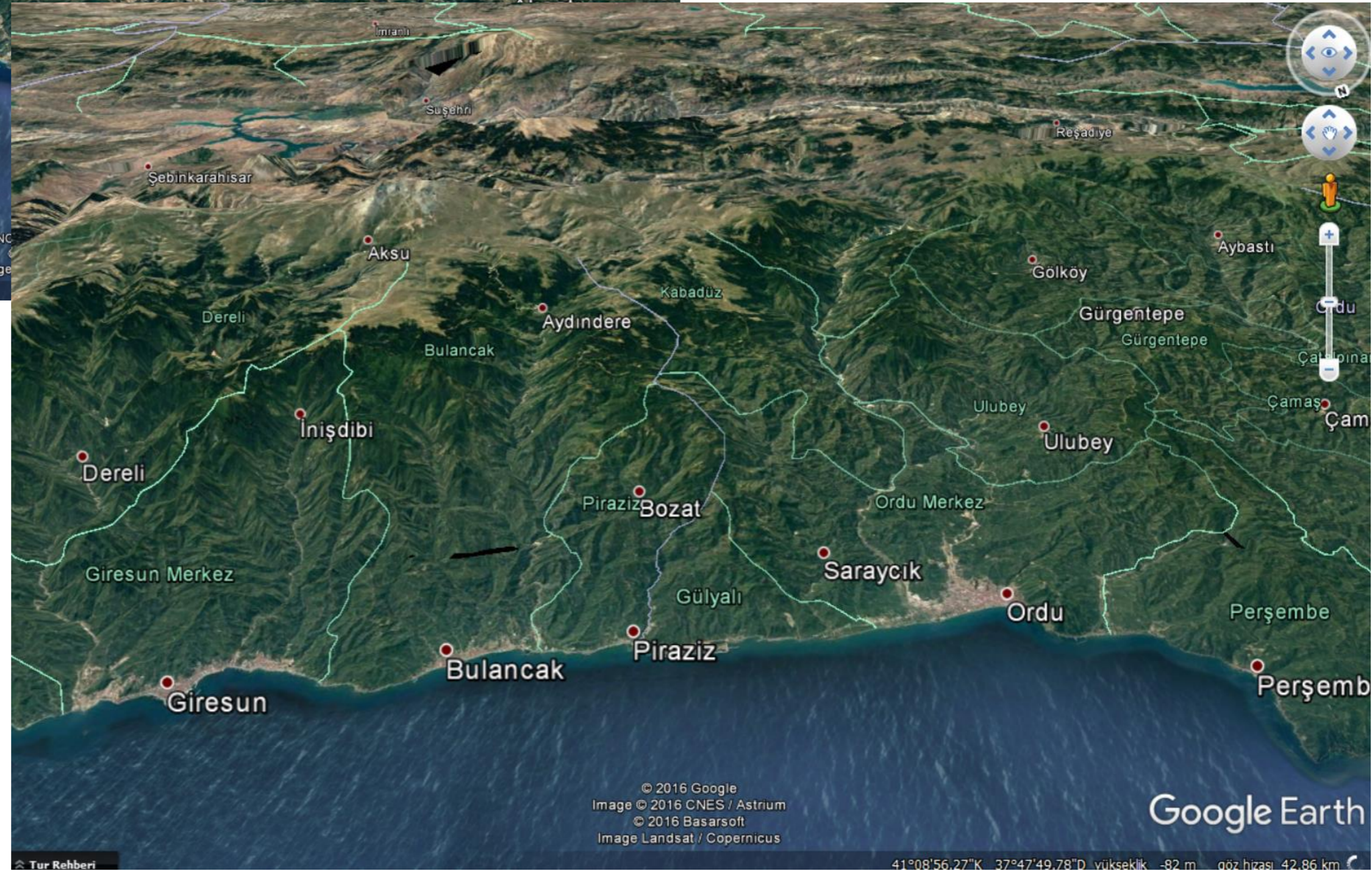
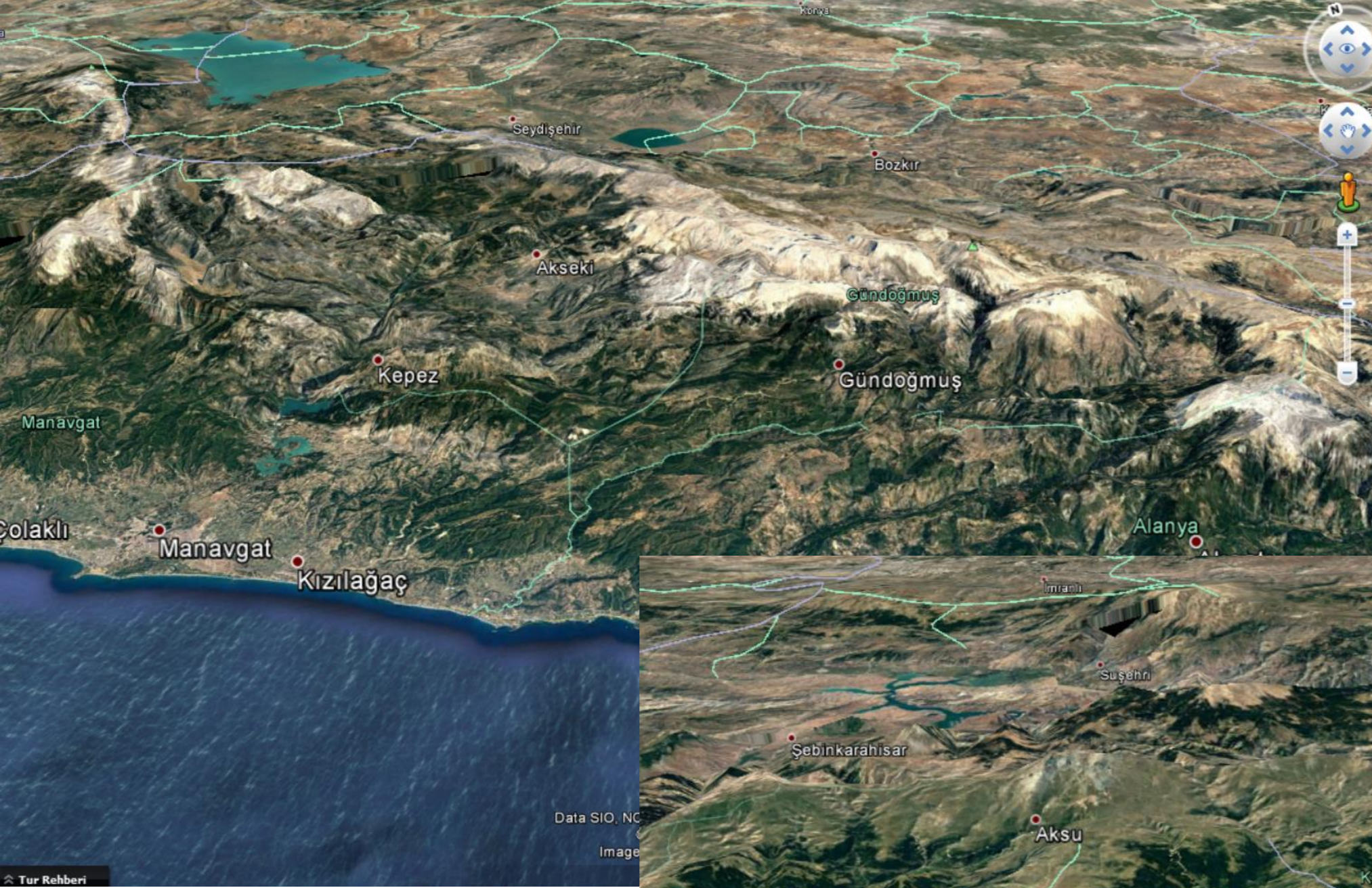
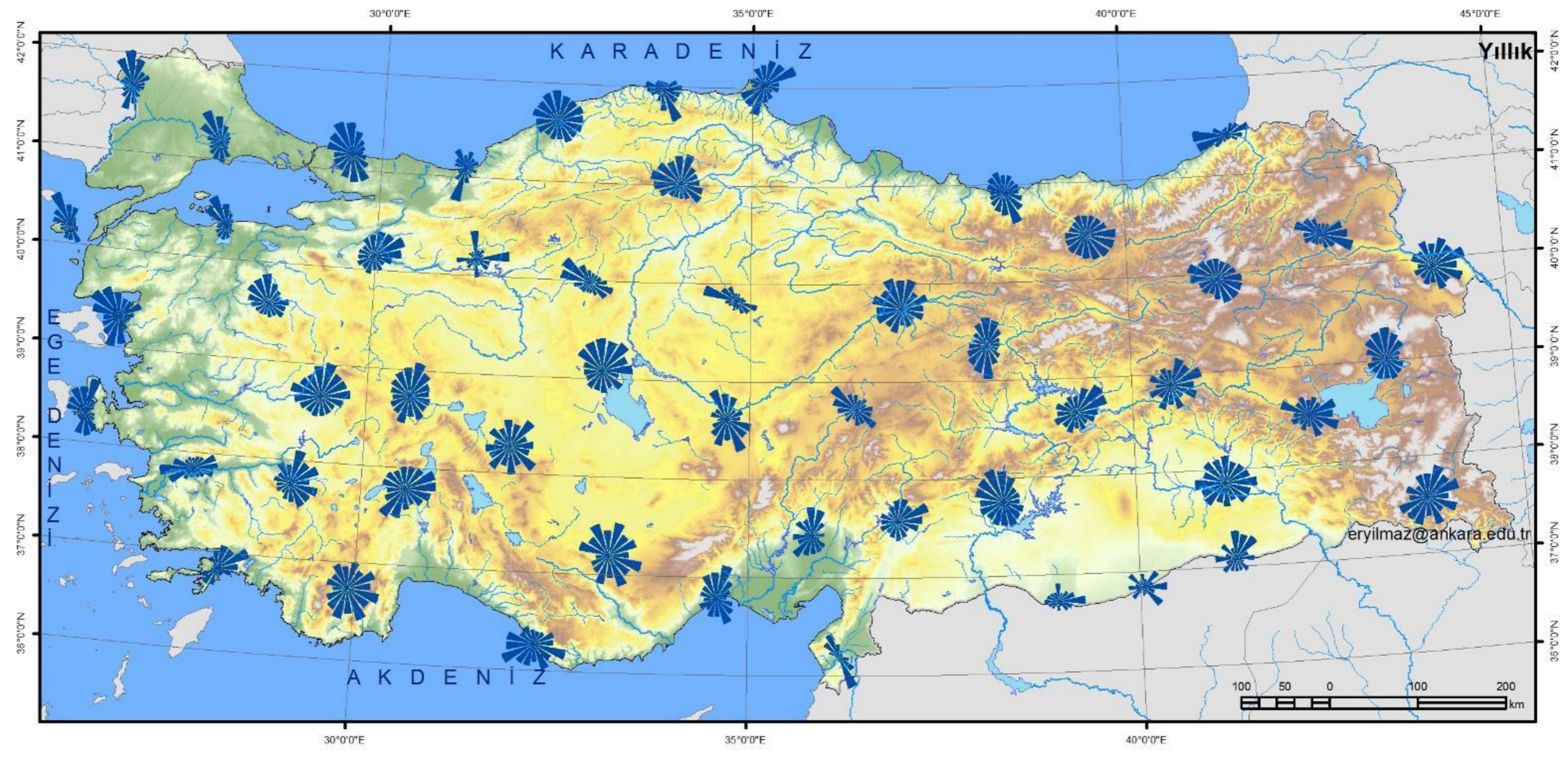


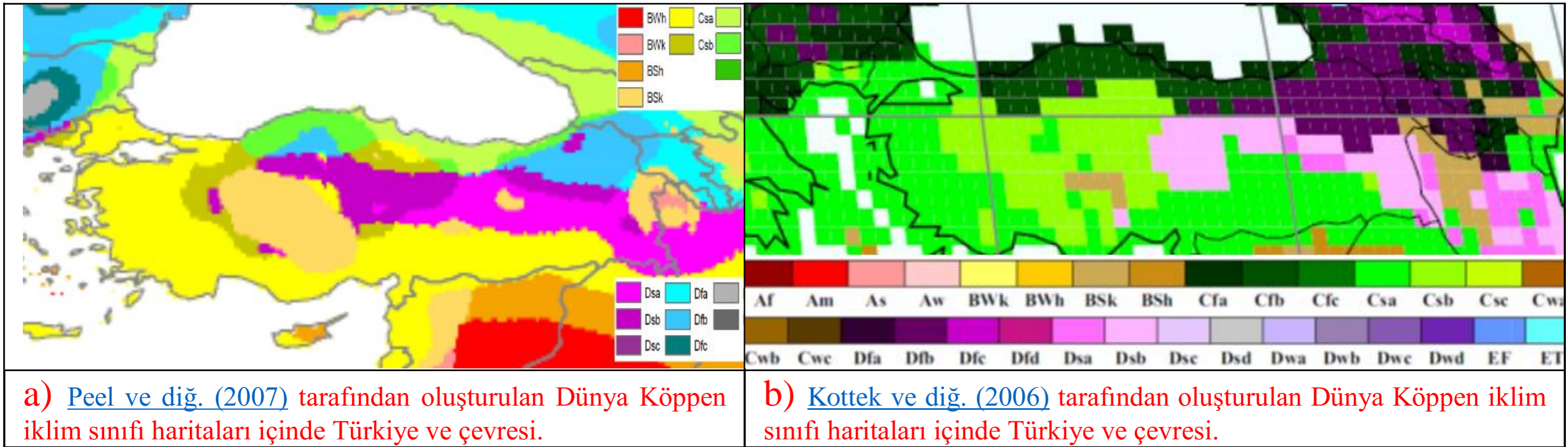
Image Landsat / Copernicus
© 2016 Basarsoft
US Dept of State Geographer
© 2016 Google

Google Earth

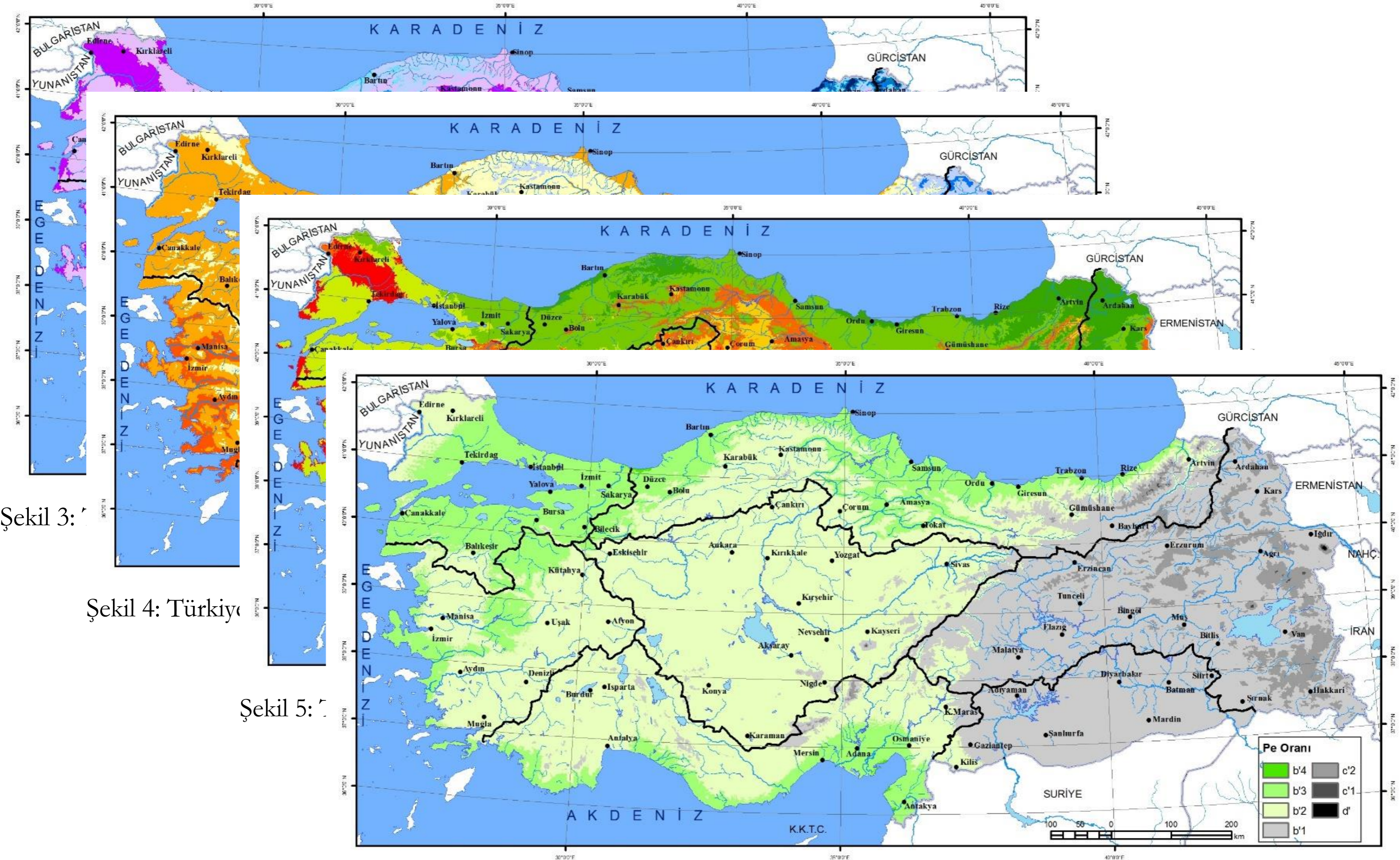
Rüzgarların Kara-Deniz İle İlişkisi







Şekil 1: Bazı çalışmalarda Türkiye ve çevresine ait Köppen-Geiger iklim tasnifleri

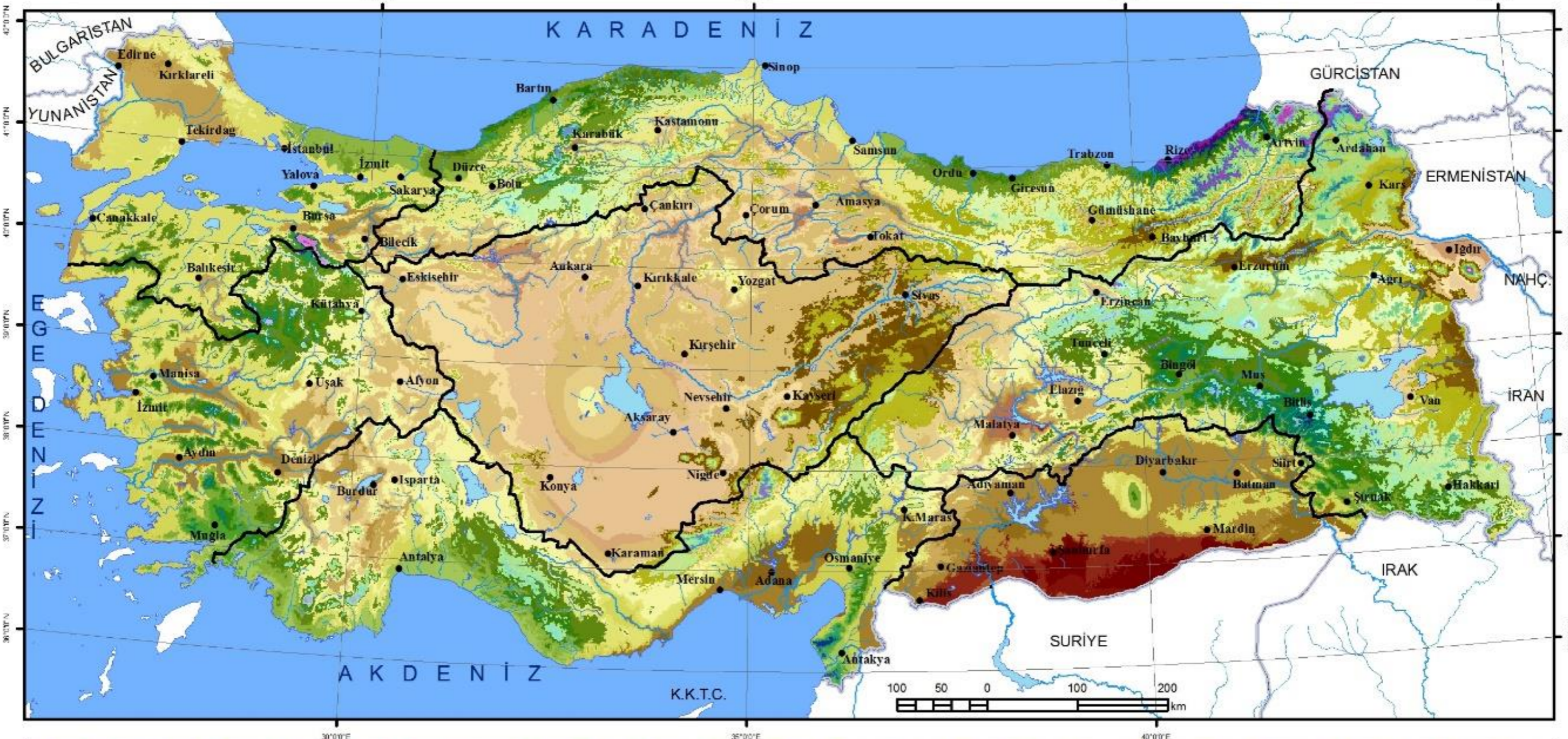
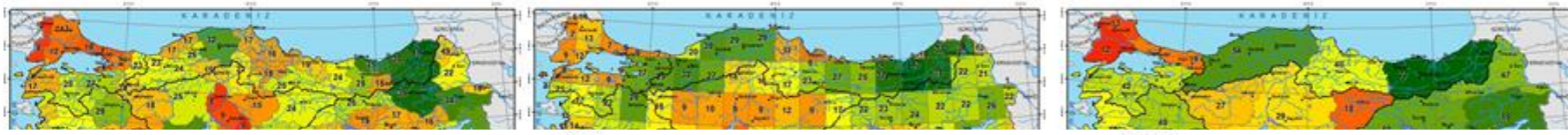


Şekil 3:

Şekil 4: Türkiye

Şekil 5:

Şekil 6: Thornthwaite iklim sınıflandırmasına göre Türkiye'de PE Oranı Sınıfları



AB1fb3	AC1rd	B4B1fb2	B4C1rb1	B4C2rc2	B3B1rb2	B3B3s2b3	B3C2rb2	B2B1fb2	B2B3rb4	B2C1rc2	B2C2s2b1	B1B1rb1	B1B1fb3	B1B3s2b1	B1C2s2b1	C2B1fb1	C2B2s2b3	C2C2sb1	C1As2b1	C1B1fb3	C1B2sb3	C1B4s2b3	DAs2b1	DB2sb2
AB1fb4	AC1rc1	B4B1rb3	B4C1rc1	B4C2rb1	B3B1rb3	B3C1rb1	B3C2rc2	B2B1rb3	B2B2s2b1	B2C1rc1	B2C2s2b2	B1B1rb2	B1B1fb4	B1B3s2b2	B1C2s2b2	C2B1fb2	C2B2sb3	C2C2sb2	C1B1fb2	C1B2sb2	C1B3s2b1	C1C2sb1	DAs2b1	DB3sb1
AB1s2b3	AC1sc2	B4B1s2b1	B4C1rc2	B4C2s2b2	B3B1s2b1	B3C1rc1	B3C2s2b1	B2B1rb4	B2B2s2b2	B2C1s2c2	B2C2s2c2	B1B1rb3	B1B2rb3	B1B3s2b3	B1C2s2c2	C2B1s2b1	C2B3s2b1	C2C2s2b1	C1B1fb2	C1B2sb3	C1B3s2b2	C1C2s2b1	DB1fb1	DB3sb2
AB1s2b4	AC1rd	B4B1s2b2	B4C1rd	B4C2s2c2	B3B1s2b2	B3C1rc2	B3C2s2b2	B2B1s2b1	B2B2s2b3	B2C1fb1	B2C2sb1	B1B1fb4	B1B2rb4	B1B3s2b4	B1C2sb1	C2B1s2b2	C2B3s2b2	C2C2s2b2	C1B1fb3	C1B2s2b1	C1B3s2b3	C1C2s2b2	DB1fb2	DB3s2b1
AB1sb2	AC2rb1	B4B1s2b3	B4C1s2c1	B4C2sb1	B3B1s2b3	B3C1s2b1	B3C2s2c2	B2B1s2b2	B2B2sb3	B2C1sc1	B2C2sb2	B1B1rb1	B1B2rb1	B1C1s2c2	B1C2sb2	C2B1s2b3	C2B3s2b3	C2C2s2c2	C1B1s2b1	C1B2sb2	C1B3s2b4	C1C2s2c2	DB1fb3	DB3s2b2
AB1sb3	AC2rb2	B4B1sb2	B4C1s2c2	B4C2sb2	B3B1s2c2	B3C1s2c1	B3C2sb1	B2B1s2b3	B2B2s2b2	B2C1sc2	B2C2sb3	B1B1s2b2	B1B2s2b2	B1C1sc2	B1C2sb3	C2B1sb1	C2B3s2b4	C2C2sb1	C1B1s2b2	C1B2s2b3	C1B3s2c2	C1C2sb1	DB1sb2	DB3sb1
AB2sb3	AC2s2c2	B4B1sb3	B4C1sc1	B4C2sb3	B3B1sb2	B3C1s2c2	B3C2sb2	B2B1sb2	B2B2s2b3	B2C2sb1	B2C2sc2	B1B1s2b3	B1B2s2b3	B1C2sb1	B1C2sc2	C2B1sb2	C2B4s2b1	C2C2sb2	C1B1s2b3	C1B2s2b4	C1B3sb1	C1C2sb2	DB2fb1	DB3sb2
AB2sb4	AC2sb1	B4B2rb3	B4C1sc2	B4C2sc2	B3B1sb3	B3C1sb1	B3C2sb3	B2B1sb3	B2B2s2b4	B2C2rb2		B1B1sb1	B1B2sb3	B1C2rb2		C2B1sb3	C2B4s2b2	C2C2sb3	C1B1sb1	C1B2sb1	C1B4s2b1		DB2fb2	DB4db1
AB2s2b4	AC2sb2	B4B2s2b3	B4C2rb1		B3B2sb3	B3C1sc1	B3C2sc2	B2B2sb3	B2C1rc1	B2C2rc2		B1B1sb2	B1B2sb4	B1C2c2		C2B2s2b1	C2B4s2b3	C2C2sc2	C1B1sb2	C1B2sb2	C1B4s2b2		DB2sb3	DB4sb1
AC1fb1	AC2sb3	B4B2s2b4	B4C2rb2		B3B2s2b2	B3C1sc2																DB2sb1	DB4sb1	
AC1rc1	ADrd				B3B2s2b3	B3C2rb1																		

yonu uzanması nedeniyle iklim çeşitliği Karadeniz kıyı kesimindeki içlerden daha fazladır. Çok farklı iklim türlerinin görüldüğü uçer yanında tek iklim türünün görüldüğü birçok ilçe bulunmaktadır. Bu ilçelerin çoğu büyükşehirler içerisinde kalmakta ya da tüm alanı ova gibi tek bir morfolojik ünite de bulunan ilçelerde karşımıza çıkmaktadır (Şekil 7d).