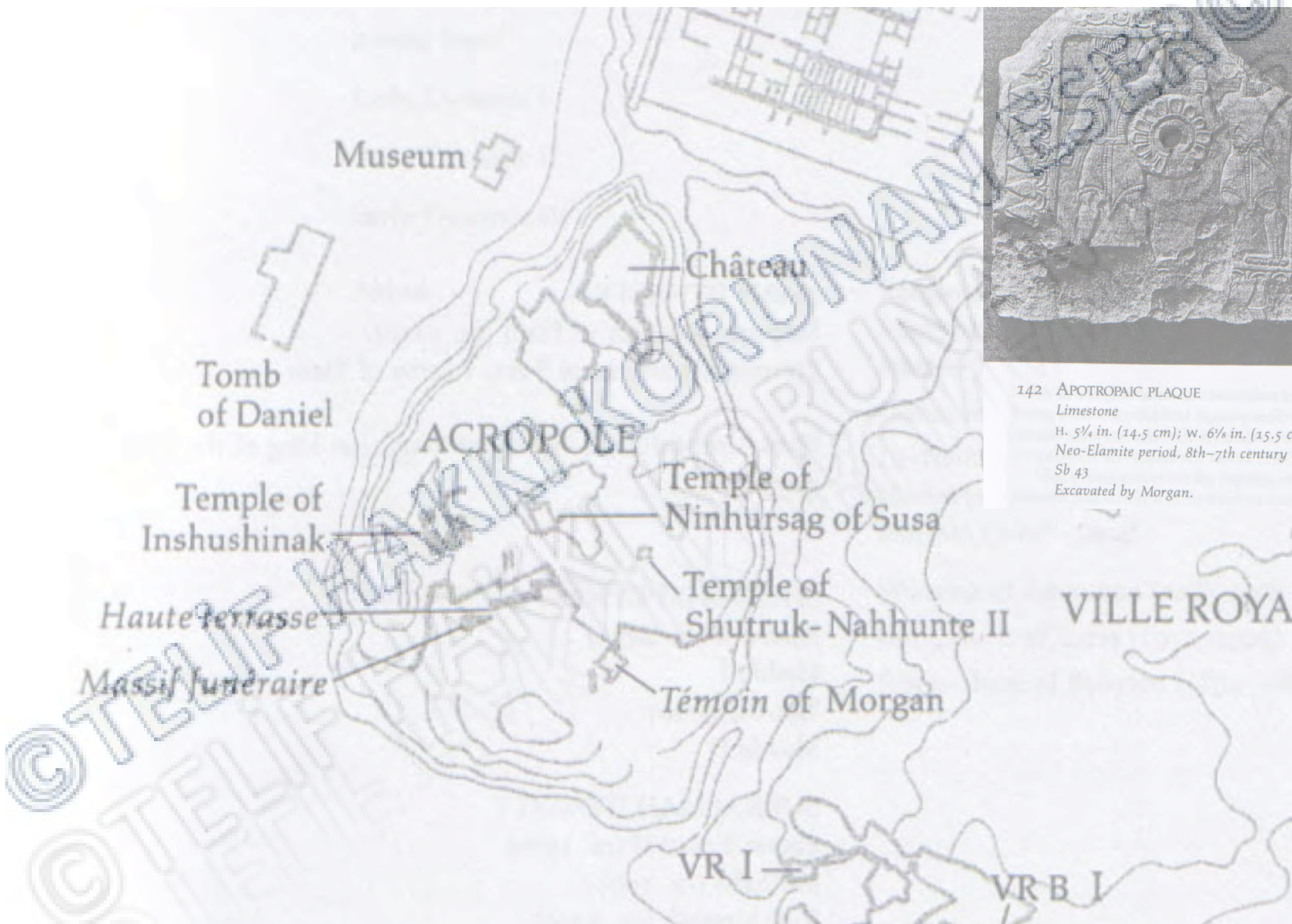


GEÇ-ELAM (M.Ö. 900-600) SANATI

© TELİF HAKKI KORUNAN ESER ©

© TELİF HAKKI KORUNAN ESER ©



142 APOTROPAIC PLAQUE
Limestone
H. 5 1/4 in. (14.5 cm); w. 6 1/8 in. (15.5 cm)
Neo-Elamite period, 8th-7th century B.C.
Sb 43
Excavated by Morgan.



Orta Elam





ORTA ELAM



GEÇ ELAM

© TELİF HAKKI KİMLİK HAKKI İZİNLE KULLANILAN ESER ©









BOX WITH GAZELLES

Faience (pâte siliceuse); pale green glaze with black outlines

H. $4\frac{3}{8}$ in. (11.2 cm); W. $4\frac{5}{8}$ in. (11.8 cm)

Early Neo-Elamite period, ca. 9th century B.C.



Two views

145 BOX WITH STRIDING MONSTERS
Faïence (pâte siliceuse); traces of monochrome glaze
H. 6¼ in. (17 cm); W. 6⅞ in. (17.5 cm)
Early Neo-Elamite period, ca. 9th–8th century B.C.







©TELIF HAKKI KORUMAN ESER ©
©TELIF HAKKI KORUMAN ESER ©
©TELIF HAKKI KORUMAN ESER ©



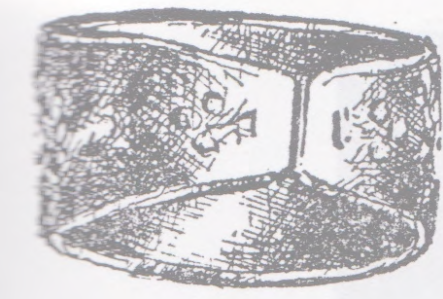
©TELIF
TELIF

HAKKI KORUNAN ESER ©
ESER
ESER

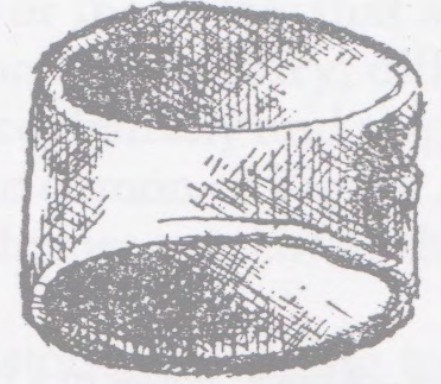








ŞERİT YÜZÜK MÜHÜR



YUVARLAK YÜZÜK MÜHÜR



Handwritten text or signature, possibly a name or date, located on the right side of the drawing.

ULAN ESER ©







©TELİF HAKKI KORUMAN ESER©

©TELİF HAKKI KORUMAN ESER©



© TELIF HAKKI KOI... AN ESER ©



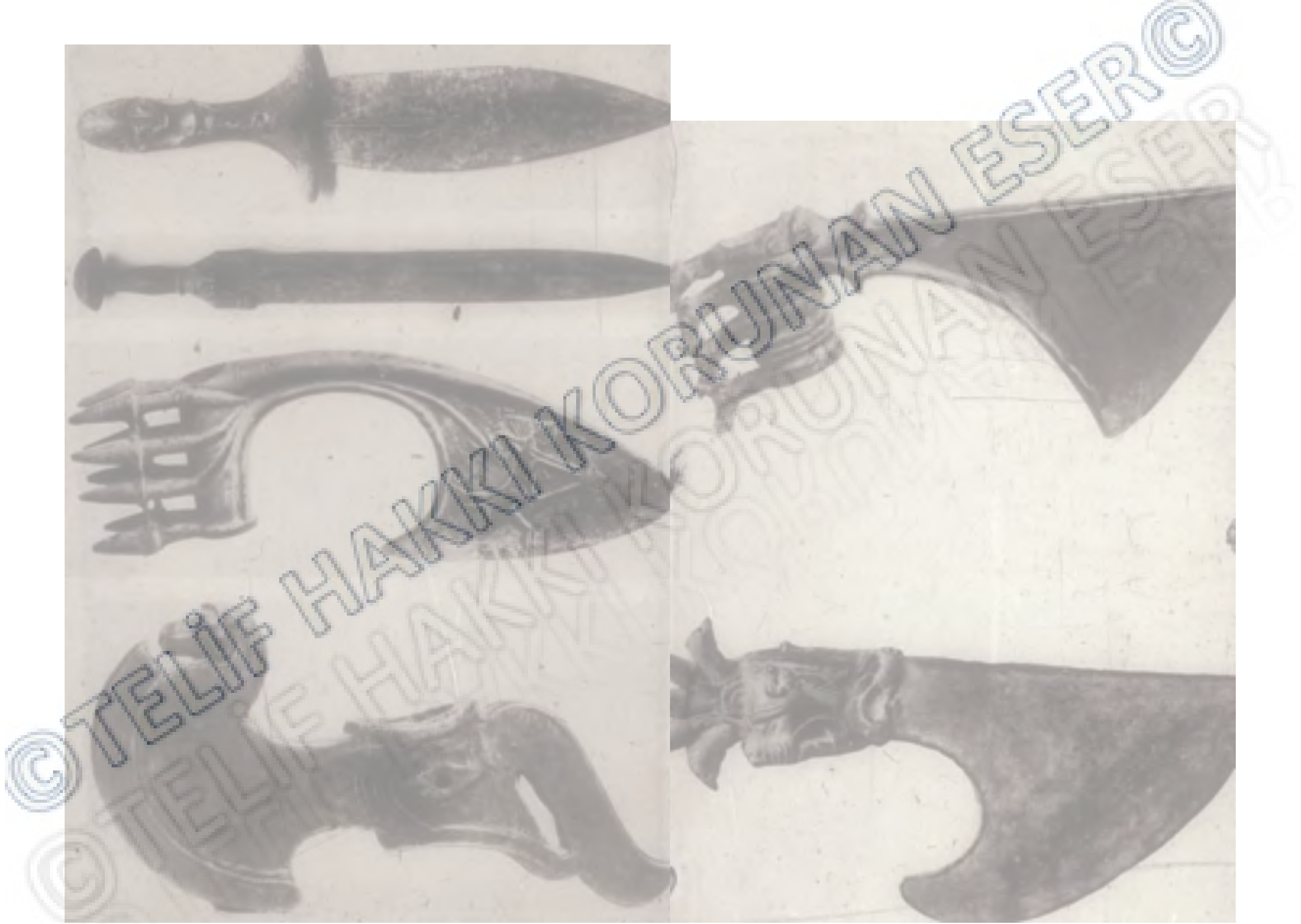
7 Two ceremonial axes, c.2000 BC, from a cemetery at Kbinaman near Kerman. They were obtained by Sir Percy Sykes together with a collection of vessels, pins, lance beads, a dagger and a scraper, mostly of arsenical copper. A raised oval shape on the shaft-hole of each axe might represent an eye. *w*: (of top axe) 12.4 cm, (of bottom axe) 13.0 cm.



8 Bronze axe with silver inlay, showing a tiger attacking an ibex. The tiger is in turn being molested by a boar. As the blade is blunt and there is no proper provision for a sturdy handle, this axe was probably ceremonial. It was obtained in the North-West Provinces of India (now Pakistan) but may originally have come from Bactria. Related to the axes from Kbinaman (fig. 7), it may also date from c.2000 BC. Analysis has shown that the alloy is copper with approximately 10% tin



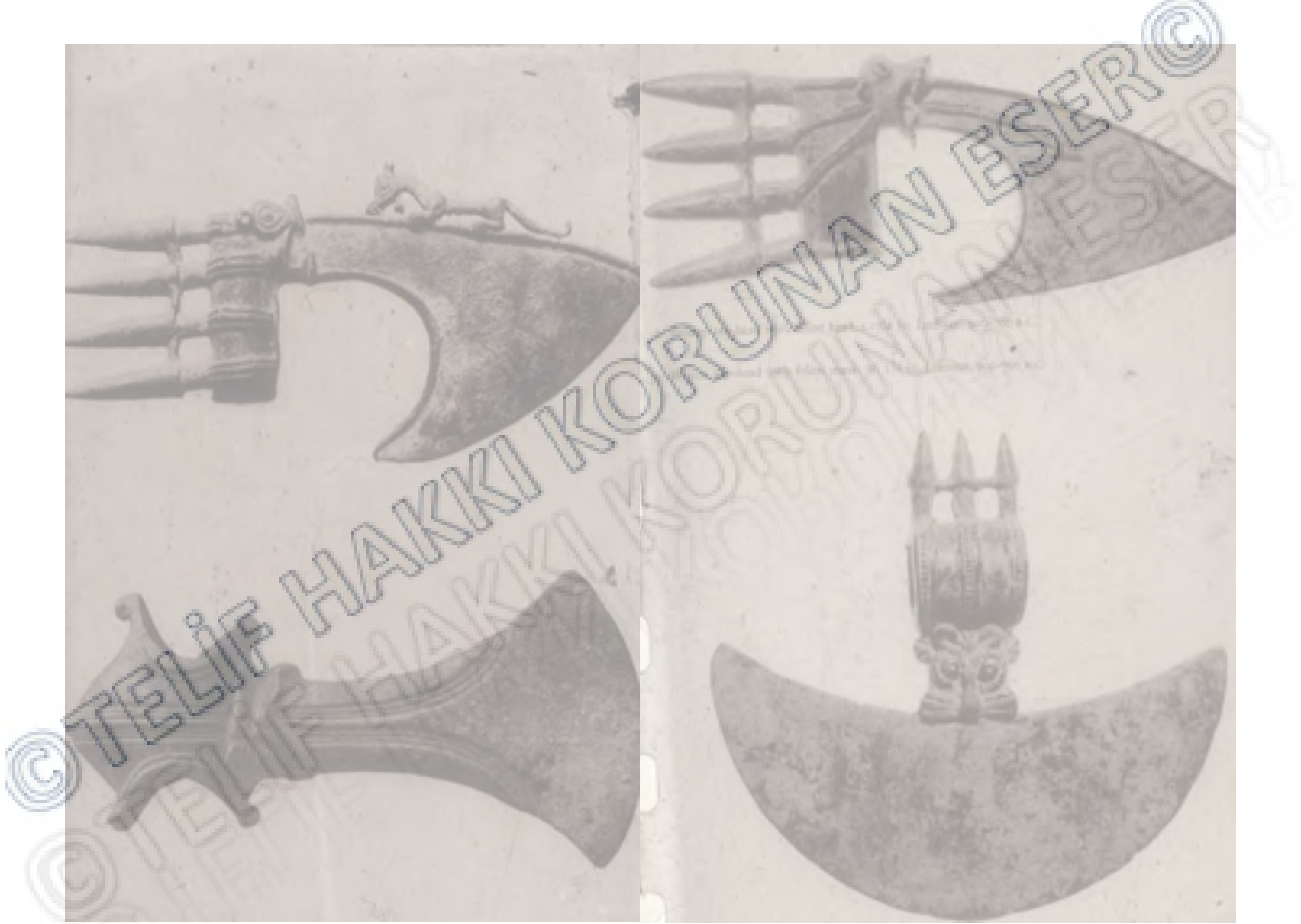






A. End 1st millennium B.C. Collection David-Weill

B. End 24th century B.C. Collection David-Weill





B. Collection André Godard. L. 15 in. (38 cm.)



C. Metropolitan Museum of Fine Arts. L. 4 1/2 in. (12 cm.)





Col. 1902. Iron Head. L. 49 cm. (22 in.)



© TELIF HAKKI KORUNAN ESER ©



C. University Museum, Philadelphia
L. 7 1/2 in. (19 cm.)

D. Boston Museum of Fine Arts
L. 6 in. (15.2 cm.)



ESER ©
ESER



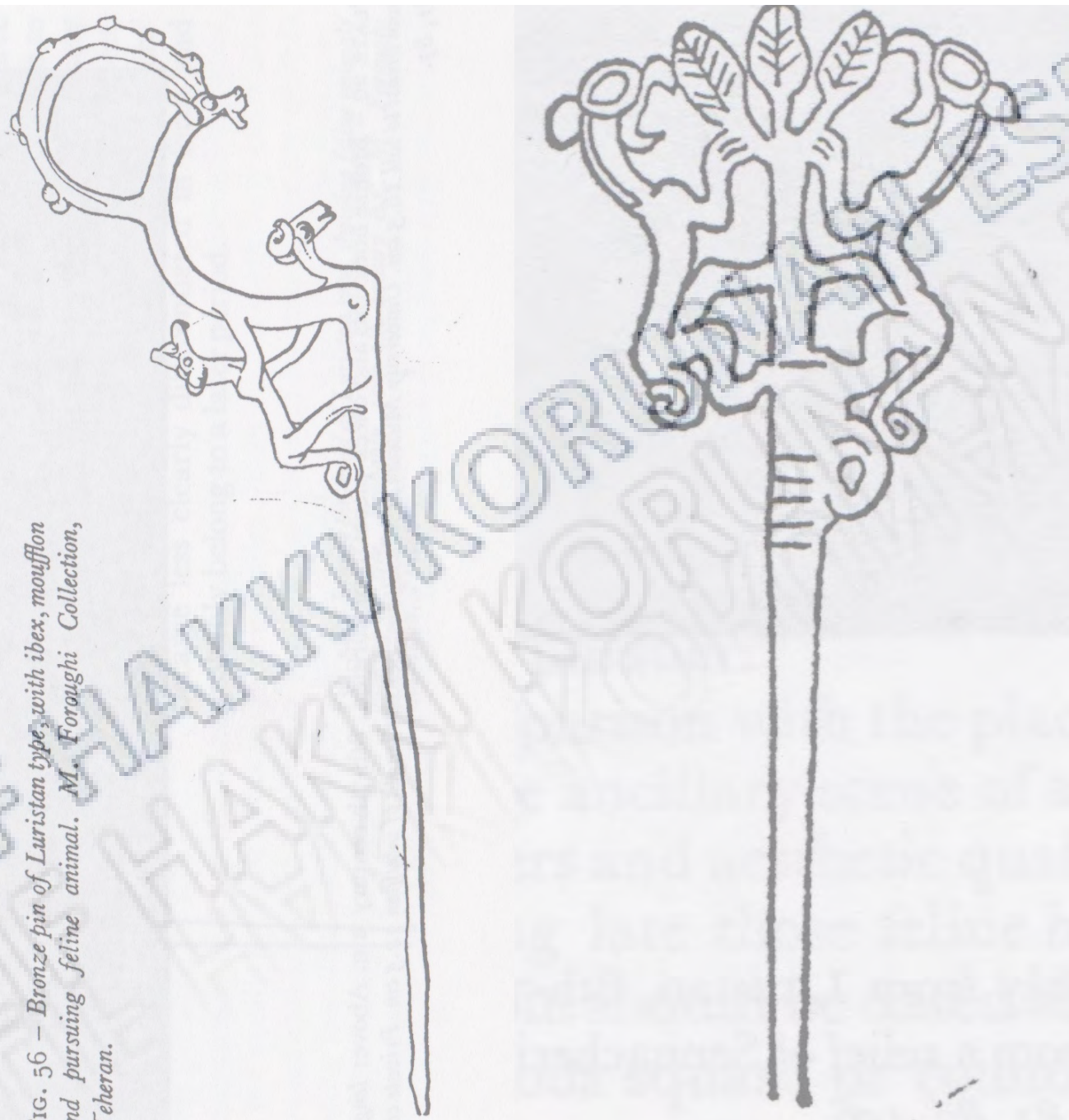
© TEL
© TEL







FIG. 56 - Bronze pin of Luristan type, with ibex, moufflon and pursuing feline animal. M. Foroughi Collection, Teheran.





©TELIF
©TELIF

HAKKI NOĞAYAN
ESER ©
ESER ©
ESER ©











©TELIF HAKKI KORUNAN ESER©



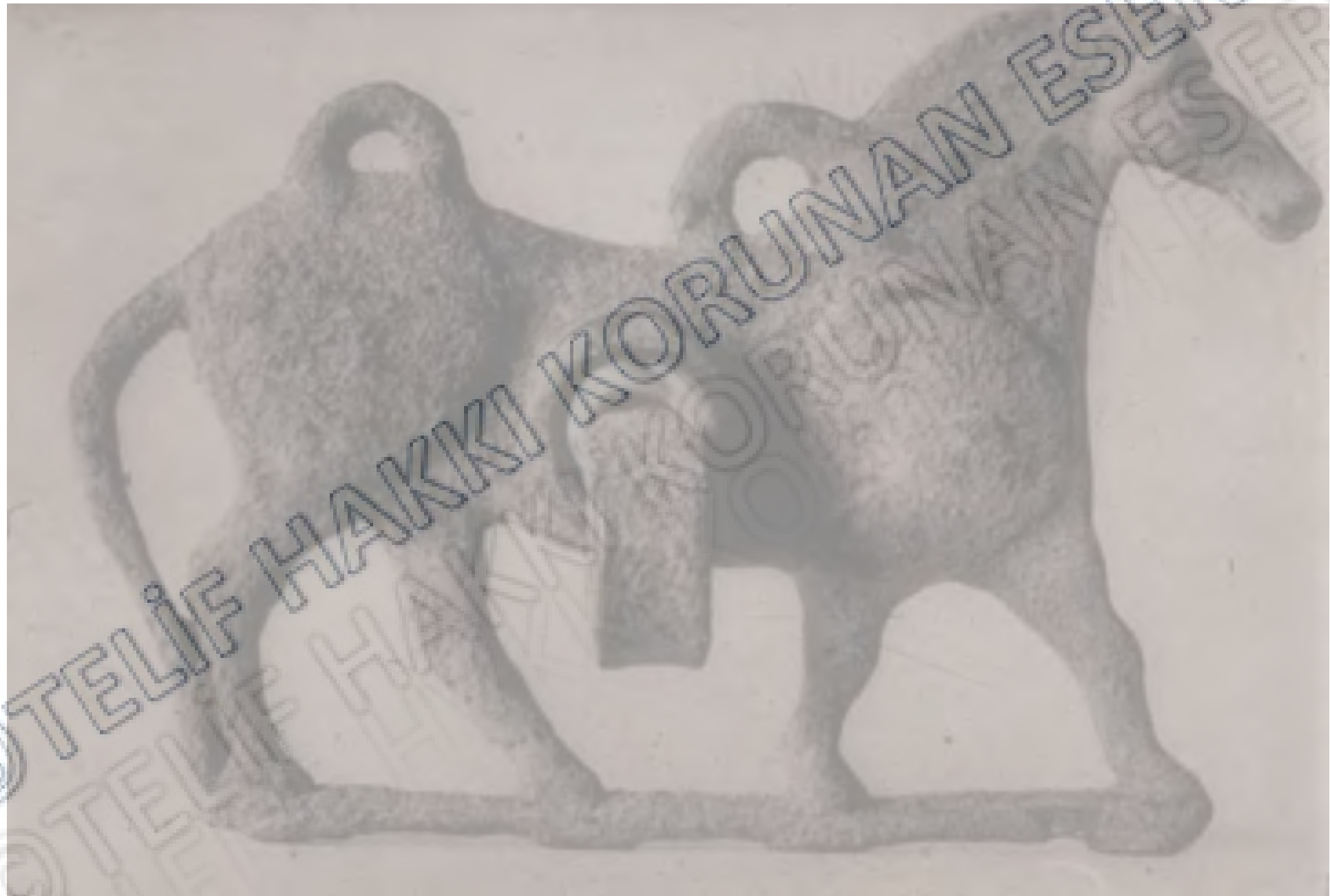


















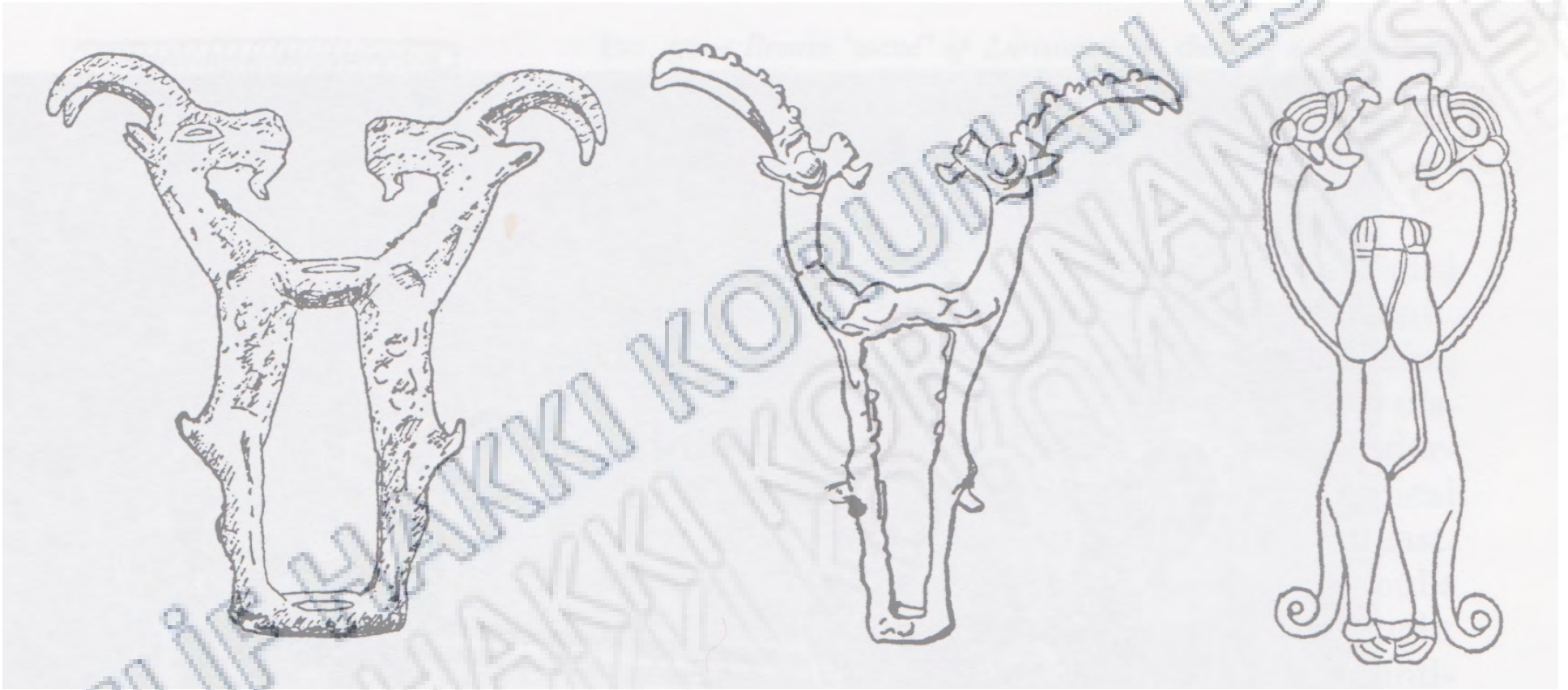
©TELİF HAKKI KORUNAN ESER©
©TELİF HAKKI KORUNAN ESER©
©TELİF HAKKI KORUNAN ESER©















©TELIF HAKKI KORUBUNAN ESER©
©TELIF HAKKI KORUBUNAN ESER©
©TELIF HAKKI KORUBUNAN ESER©



©TELİF HAKKI KORUNAN ESER©
©TELİF HAKKI KORUNAN ESER©
©TELİF HAKKI KORUNAN ESER©





©TELIF HAKKI KORUNAN ESER©





© TELIF HAKKI KORUNAN ESER ©



© TELIF HAKKI KORUNAN ESER ©

