



Figure 50. Statue of Darius I from the gate. Apadana mound, Susa, Achaemenid period, ca. 500-480 B.C.



157 CONFRONTING SPHINXES

Siliceous brick with decoration in relief; glazed brown, light green, yellow, white, with gray outlines

H. 47¼ in. (120 cm); W. 46 in. (117 cm); D. 2 in. (5 cm)

Achaemenid period, late 6th–early 5th century B.C.
Apadana, central court of the palace; Sb 3324
Excavated by Mecquenem, 1911.

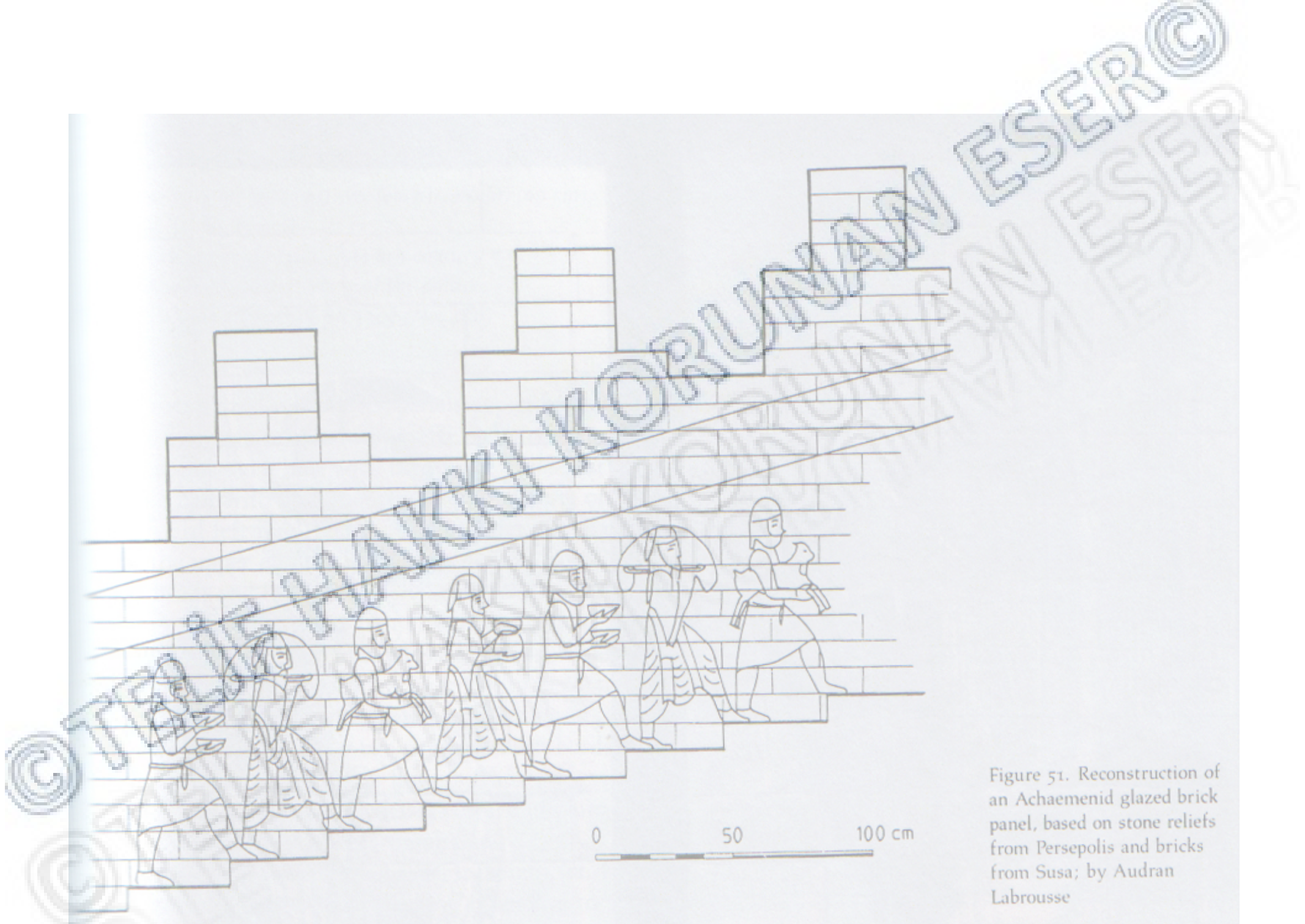


Figure 51. Reconstruction of an Achaemenid glazed brick panel, based on stone reliefs from Persepolis and bricks from Susa; by Audran Labrousse



Figure 53. Servants on stone reliefs from Persepolis. Palace of Darius I, Achaemenid period, reign of Darius I, ca. 522–486 B.C.



© TELIF HAKI
© TELIF HAKI
UNVAN ESER ©
UNVAN ESER
UNVAN ESER







100 HAND IN SLEEVED GARMENT

Siliceous brick; glazed cobalt blue, yellow, white, with black outlines

H. 2 $\frac{1}{2}$ in. (6.3 cm); W. 4 $\frac{1}{4}$ in. (12 cm); D. 3 $\frac{1}{2}$ in. (8 cm)

Achaemenid period, late 6th–5th century B.C.

Sb 14229



Figure 54. Reconstruction of the Achaemenid tomb discovered on the Acropole in 1901. Watercolor



BEADS

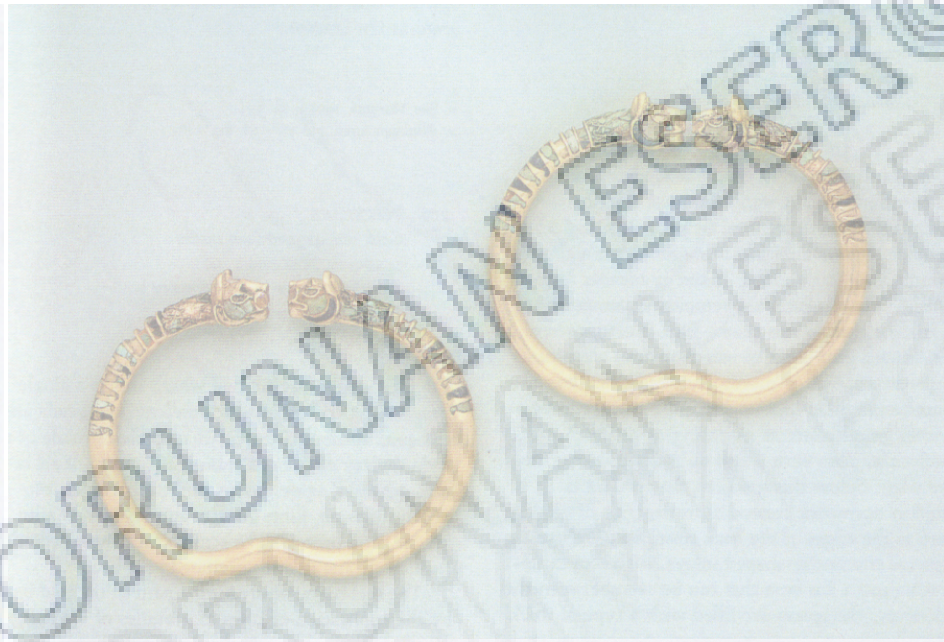
Agate

L. $10\frac{1}{8}$ in. (26.5 cm)

Achaemenid period, 4th century B.C.

Acropole; Sb 12070

Excavated by Morgan, 1901.



Detail

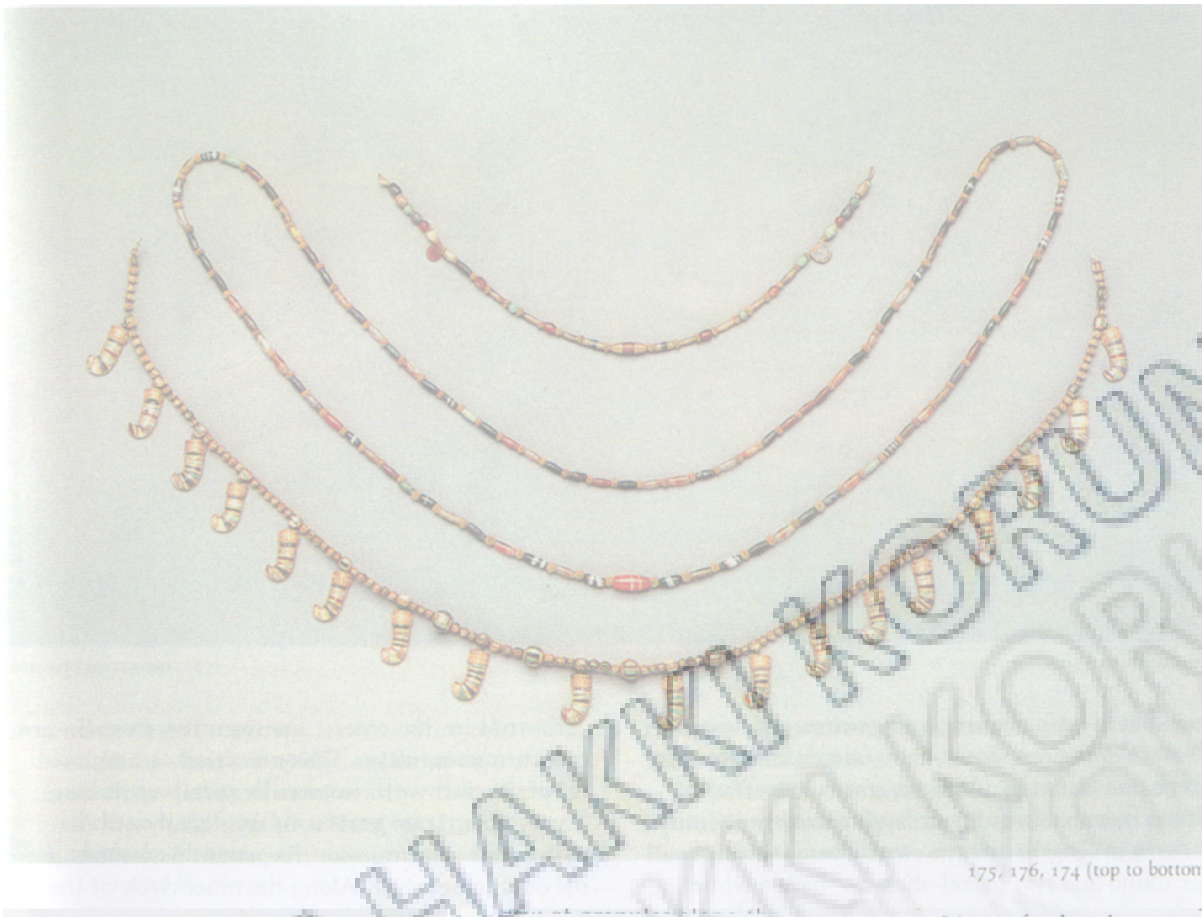
- 172, PAIR OF BRACELETS WITH LION'S-HEAD
TERMINALS

Gold, lapis lazuli, turquoise, and mother-of-pearl
 $2\frac{1}{2} \times 3$ in. (6.4 x 7.7 cm) and $2\frac{1}{2} \times 3\frac{1}{8}$ in. (6.3 x 7.5
cm)

Achaemenid period, 4th century B.C.

Acropole; Sb 2761, 2762

Excavated by Morgan, 1901.



175, 176, 174 (top to bottom)

175 NECKLACE
Gold and semiprecious stones
L. 12 7/8 in. (32 cm)
Achaemenid period, 4th century B.C.
Acropole; Sb 2768
Excavated by Morgan, 1901.

176 NECKLACE
Gold and semiprecious stones
L. 48 7/8 in. (124 cm)
Achaemenid period, 4th century B.C.
Acropole; Sb 19355

NECKLACE WITH PENDANTS
Gold, lapis lazuli, turquoise, and carnelian
L. 27 1/2 in. (70 cm)
Achaemenid period, 4th century B.C.
Acropole; Sb 2763
Excavated by Morgan, 1901. **174**



178, one earring

178 PAIR OF EARRINGS
Gold, lapis lazuli, and turquoise
H. 1 7/8 in. (4.1 cm); W. 1 1/4 in. (4.4 cm)
Achaemenid period, 4th century B.C.
Acropole; Sb 2764, 2765



179, one button r

179 PAIR OF BUTTONS
Gold, lapis lazuli, turquoise, and carnelian
Each, DIAM. 3/4 in. (2.1 cm)
Achaemenid period, 4th century B.C.
Acropole; Sb 2766
Excavated by Morgan, 1901.



TORQUE WITH LION'S-HEAD TERMINALS
Gold, lapis lazuli, turquoise, and mother-of-pearl
DIAM. 8 in. (20.2 cm)
Achaemenid period, 4th century B.C.
Acropole; Sb 2760
Excavated by Morgan, 1901.





170

Underside

170 BOWL
Silver
H. $1\frac{1}{8}$ in. (4.3 cm); DIAM. $7\frac{1}{4}$ in. (18.4 cm)
Achaemenid period, 4th century B.C.
Acropole; Sb 2756
Excavated by Morgan, 1901.



© TELIF HAKKI KORUNAN ESER ©



©TELIF HAKKI KORUNAN ESER ©









© TELIF HAKKI KORUYANAN ESER ©
© TELIF HAKKI KORUYANAN ESER ©
© TELIF HAKKI KORUYANAN ESER ©



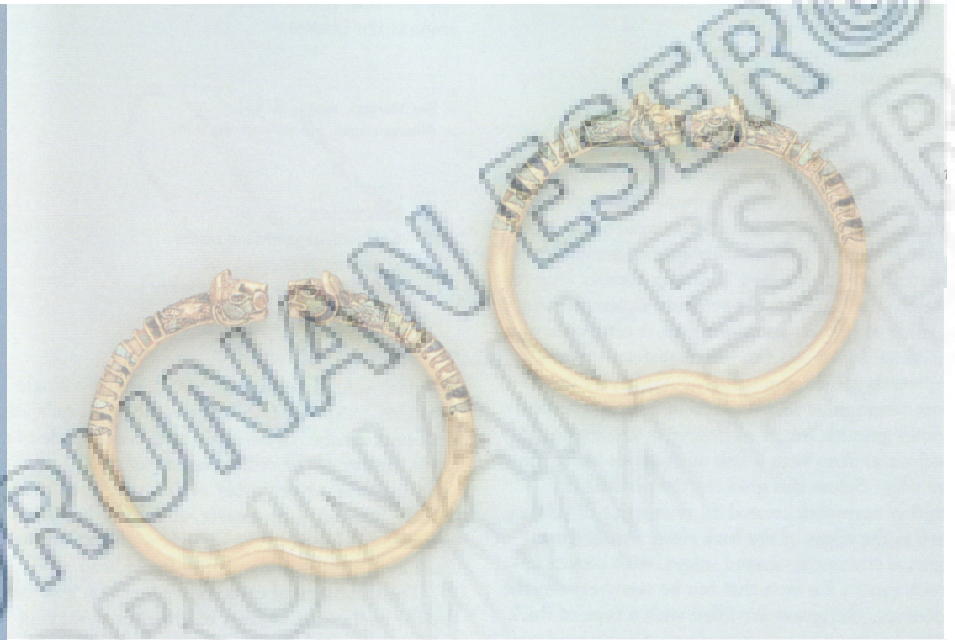






Wichtige Schlacht mit Datierung
Alexanderzug
in Alexanders
Alexander abhängige Region





Detail

172, PAIR OF BRACELETS WITH LION'S-HEAD
TERMINALS

173
Gold, lapis lazuli, turquoise, and mother-of-pearl
2½ x 3 in. (6.4 x 7.7 cm) and 2½ x 3⅞ in. (6.3 x 7.9
cm)

Achaemenid period, 4th century B.C.

Acropole; Sb 2761, 2762

Excavated by Morgan, 1901.





©TELIF

ESER ©

HAKKI KORUNAM

ESER





Dareikoi

