

KÖPEKTE RADYOGRAFİK POZİSYONLAR
İSKELET SİSTEMİ

ÖN BACAĞ

SKAPULA

Postero-Anterior

Lateral

OMUZ EKLEMİ

Postero-Anterior

Lateral

HUMERUS

Antero-Posterior

Postero-Anterior

Lateral

DİRSEK EKLEMİ

Antero-Posterior

Lateral

RADIUS – ULNA

Ulnada processus olecrani kırığı önemlidir.

Antero-Posterior

Lateral

KARPUS

Antero-Posterior

45°Antero-Lateral / Medial Oblik

Lateral

METAKARPUS

Antero-Posterior

Lateral

Oblik

FALANKSLAR

Antero-Posterior

Lateral

ARKA BACAĞ

PELVİS

Pelvis bölgesi; lumbo-sakral birleşme, sakrum ve anterior coccigeus ile coxae ve üst femuru içerir.

KALÇA EKLEMİ

Ventro-Dorsal

Dorso- ventral

Lateral

FEMUR

Antero-Posterior

Lateral

DİZ EKLEMİ

Postero-Anterior horizontal

Lateral

Femurun İnterkodiler sulkusunun yatay görüntüsü

TIBIA ve FIBULA

Antero-Posterior

Lateral

TARSUS

Antero-Posterior

Lateral

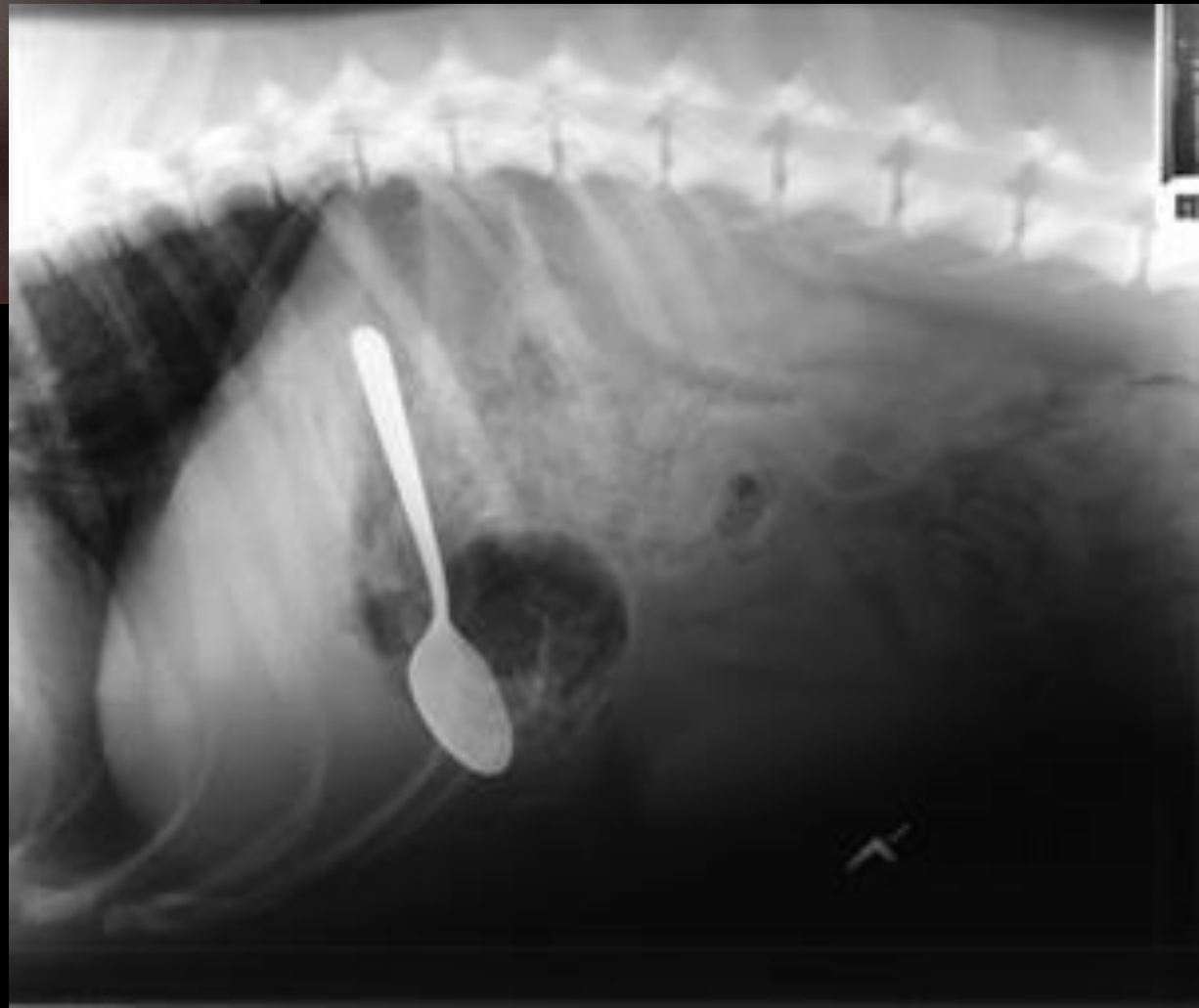
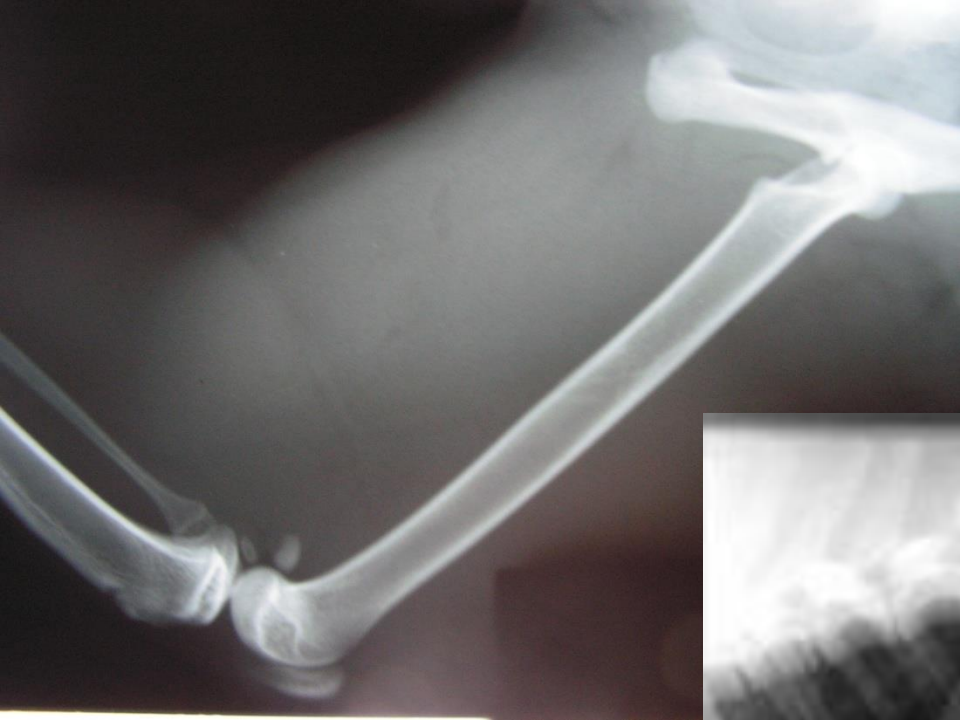
METATARSUS

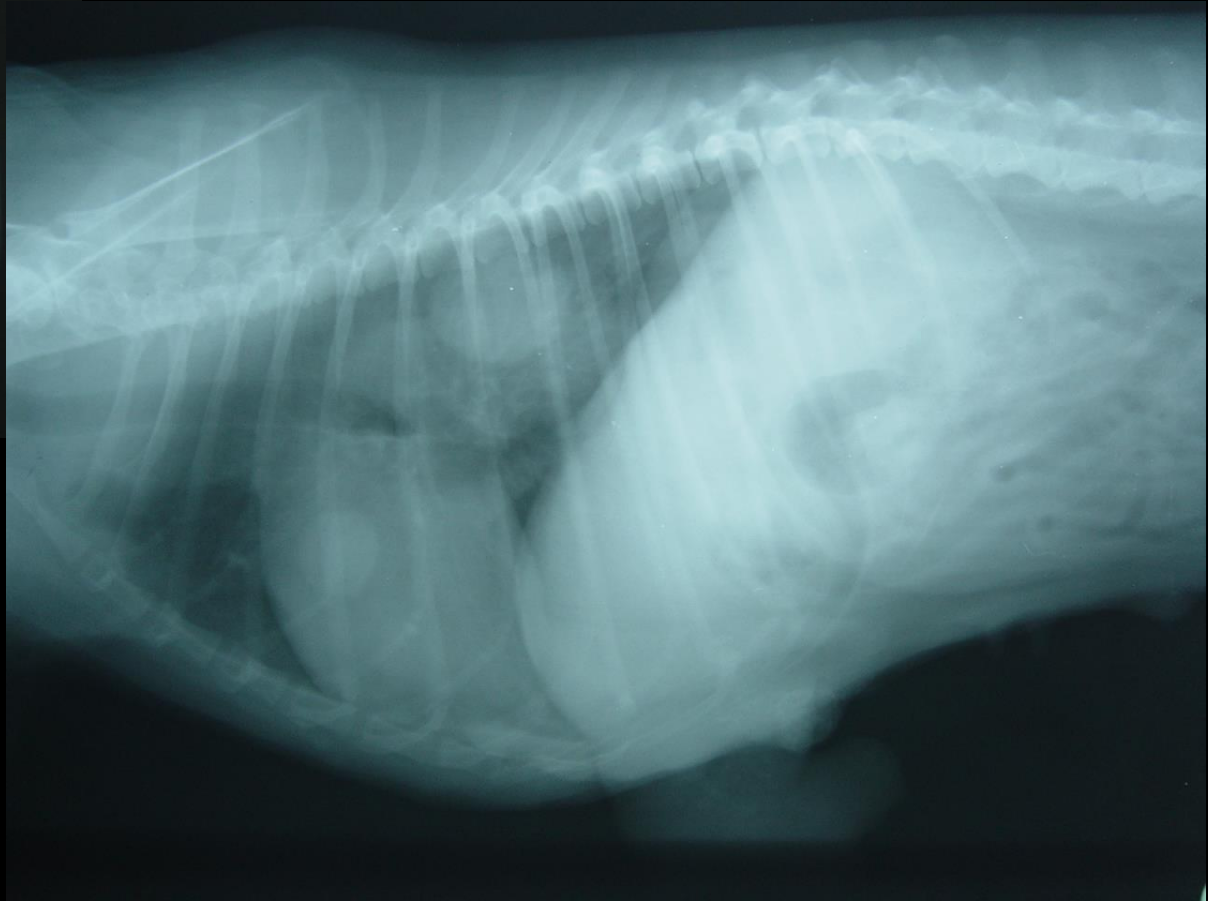
Antero-Posterior

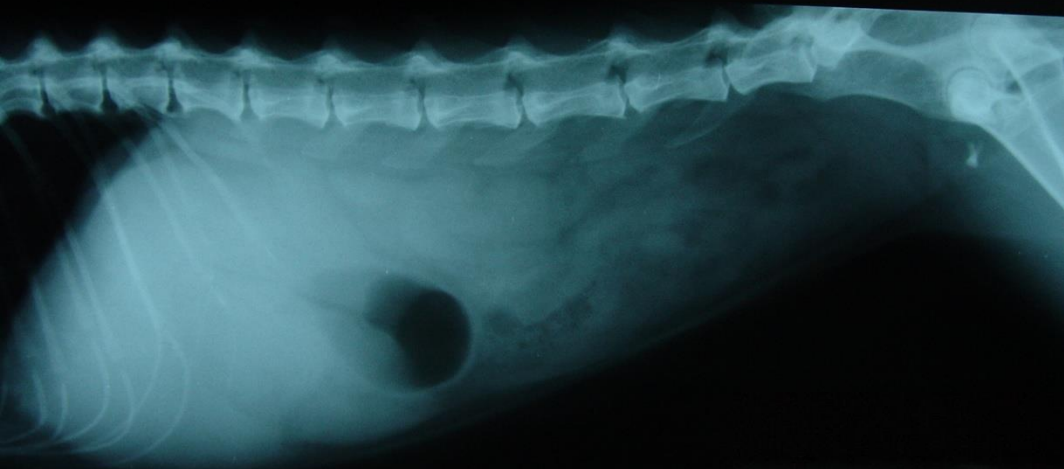
Lateral











Shotgun pellets
over the spine
and deep
under the skin

