



## Lesson 9

## Android

## Fonts

Victor Matos  
Cleveland State University

Portions of this page are reproduced from work created and [shared by Google](#) and used according to terms described in the [Creative Commons 3.0 Attribution License](#).

## Fonts

Ice Cream Sandwich introduced a new font type family named **Roboto**.

The new font intends to provide a uniform touch to Android apps and display well on high-resolution screens.

The current TextView framework supports *regular*, **bold**, *italic*, and **bold italic** weights by default.

*(this page is written with the Roboto Font)*

## Roboto Regular

ABCDEFGHIJKLMN  
OPQRSTUVWXYZ  
abcdefghijklmn  
opqrstuvwxyz

## Roboto Bold

**ABCDEFGHIJKLMN**  
**OPQRSTUVWXYZ**  
**abcdefghijklmn**  
**opqrstuvwxyz**

Reference:

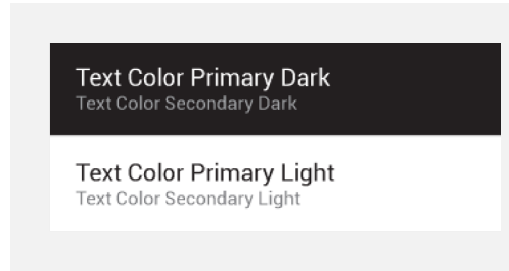
<http://developer.android.com/design/style/typography.html>

## Fonts

### Default type colors

The Android UI uses the following default text color styles: **textColorPrimary** and **textColorSecondary**.

For light themes use **textColorPrimaryInverse** and **textColorSecondaryInverse**.



Reference:

<http://developer.android.com/design/style/typography.html>

3

## Fonts

### Typographic Scale

The Android framework a limited set of type sizes.

Users can also select specific **textSize** in scale-independent pixels (sp).

Text Size Micro	12sp
Text Size Small	14sp
Text Size Medium	18sp
Text Size Large	22sp

Reference:

<http://developer.android.com/design/style/typography.html>

4

## Fonts

Android's **typeFace** attribute can be set using XML or code as follows:

1. XML clause `android:typeFace="..."` clause, or
2. Method `.setTypeFace(...)`

Options are:

**sans:** An m is wider than i, mmm iii

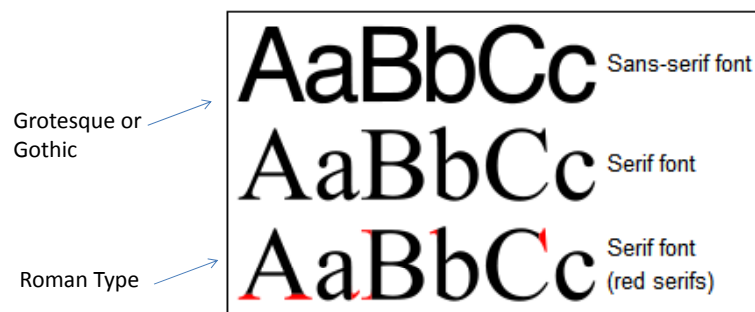
**serif:** An m is wider than i, mmm iii

**monospaced:** An mmm is not wider than iii

5

## Fonts

Also know as:



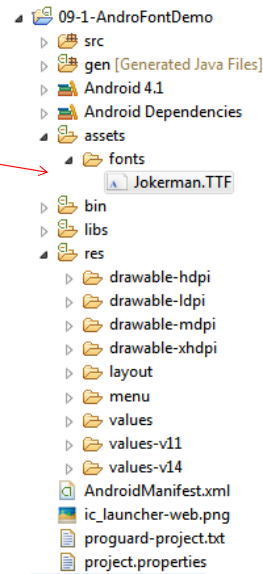
Source: <http://en.wikipedia.org/wiki/Serif>

6

# Fonts

Developers may add any font to their application by following the next steps:

1. Create the **/fonts** folder in the **/assets** directory.
2. Copy *any fonts* you plan to use into the new folder (Look at `c:\Windows\Font` for your basic local collection).
3. Use Java code to bind the font with the UI widget wanting to display the custom typeface (see *example*).



# Fonts

**Example:** Getting ready to use the **Jokerman.TTF** font.

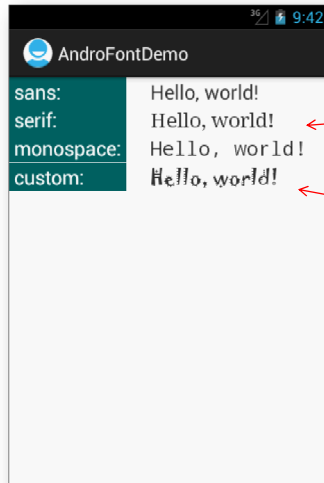
Original font taken from `c:\Windows\Fonts`

Example based on:  
 The Busy Coder's Guide to Android Development  
 by Mark L. Murphy  
 Copyright © 2008-2009 CommonsWare, LLC.  
 ISBN: 978-0-9816780-0-9

## Fonts

### Example:

Display the **Hello World !** message using different fonts.



Using the  
Roboto font

Using the font:  
Jokerman.TTF

#### Note:

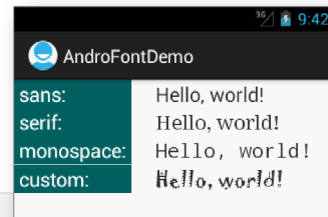
If you are using Windows look into the folder: `c:\Windows\Fonts` for fonts installed in your machine.

9

## Fonts

### Example Application:

Showing different FONT types.  
XML Layout: **main.xml** (1 of 5)



```
<?xml version="1.0" encoding="utf-8"?>
<TableLayout xmlns:android="http://schemas.android.com/apk/res/android"
    android:layout_width="fill_parent"
    android:layout_height="fill_parent"
    android:orientation="vertical"
    android:stretchColumns="1" >

    <TableRow
        android:layout_width="fill_parent"
        android:layout_height="wrap_content"
        android:orientation="horizontal" >
```

10

## Fonts

### Example Application:

Showing different FONT types.

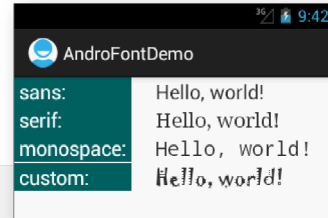
XML Layout: **main.xml** (2 of 5)

```

<TextView
    android:layout_width="wrap_content"
    android:layout_height="wrap_content"
    android:layout_marginRight="24dp"
    android:background="#ff006666"
    android:text=" sans:"
    android:textColor="@android:color/primary_text_dark"
    android:textSize="20sp" >
</TextView>

<TextView
    android:layout_width="wrap_content"
    android:layout_height="wrap_content"
    android:text="Hello, world!"
    android:textSize="20sp"
    android:typeface="sans" > ←
</TextView>
</TableRow>

```



11

## Fonts

### Example Application:

Showing different FONT types.

XML Layout: **main.xml** (3 of 5)

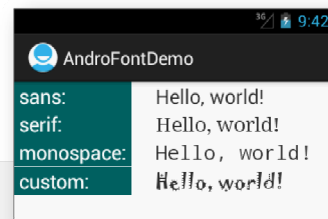
```

<TableRow
    android:layout_width="fill_parent"
    android:layout_height="wrap_content"
    android:orientation="horizontal" >

    <TextView
        android:layout_width="wrap_content"
        android:layout_height="wrap_content"
        android:layout_marginRight="24dp"
        android:background="#ff006666"
        android:text=" serif:"
        android:textColor="@android:color/primary_text_dark"
        android:textSize="20sp" >
    </TextView>

    <TextView
        android:layout_width="wrap_content"
        android:layout_height="wrap_content"
        android:text="Hello, world!"
        android:textSize="20sp"
        android:typeface="serif" > ←
    </TextView>
</TableRow>

```



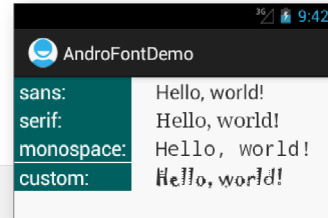
## Fonts

### Example Application:

Showing different FONT types.

XML Layout: **main.xml** (4 of 5)

```
<TableRow
    android:layout_width="fill_parent"
    android:layout_height="wrap_content"
    android:orientation="horizontal" >
    <TextView
        android:layout_width="wrap_content"
        android:layout_height="wrap_content"
        android:layout_marginRight="24dp"
        android:background="#ff066666"
        android:text=" monospace: "
        android:textColor="@android:color/primary_text_dark"
        android:textSize="20sp" >
    </TextView>
    <TextView
        android:layout_width="wrap_content"
        android:layout_height="wrap_content"
        android:text="Hello, world!"
        android:textSize="20sp"
        android:typeface="monospace" > ←
    </TextView>
</TableRow>
```



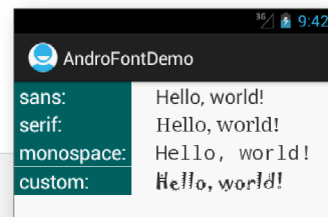
## Fonts

### Example Application:

Showing different FONT types.

XML Layout: **main.xml** (5 of 5)

```
<TableRow
    android:layout_width="fill_parent"
    android:layout_height="wrap_content"
    android:orientation="horizontal" >
    <TextView
        android:layout_width="wrap_content"
        android:layout_height="wrap_content"
        android:layout_marginRight="24dp"
        android:background="#ff066666"
        android:text=" custom:"
        android:textColor="@android:color/primary_text_dark"
        android:textSize="20sp" >
    </TextView>
    <TextView
        android:id="@+id/custom" ←
        android:layout_width="wrap_content"
        android:layout_height="wrap_content"
        android:text="Hello, world!"
        android:textSize="20sp" >
    </TextView>
</TableRow>
</TableLayout>
```



## Fonts

**Example Application:**  
Showing different FONT types.  
XML Layout: **main.xml** (5 of 5)

```

public class AndroFontDemo extends Activity {
    @Override
    public void onCreate(Bundle icle) {
        super.onCreate(icle);
        setContentView(R.layout.main);

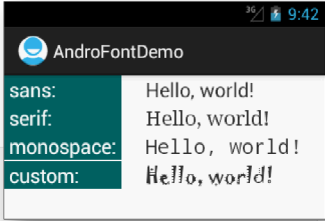
        // bind the "custom" TextView with chosen font
        TextView txtCustom=(TextView)findViewById(R.id.custom);

        txtCustom.setTypeface(Typeface.SANS_SERIF);

        Typeface myNewFace=Typeface.createFromAsset(getAssets(),
            "fonts/Jokerman.TTF");

        txtCustom.setTypeface(myNewFace);
    } //onCreate
} //class

```



15

## Fonts

# Questions ?

16