

Ankara University, Faculty of Agriculture , Department of Fisheries and  
Aquaculture, Programme of Fisheries and Aquaculture

# AQS421: Aquatic Invertebrates

Reference: Brusca, R. C., & Brusca, G. J. **Invertebrates**. 2003.  
Sunderland, MA: Sinauer Associates, 2.

# AQS421: Aquatic Invertebrates

**Week 1:**

- Introduction

**Week 2:**

- Classification, Systematics and Phylogeny

**Week 3:**

- Animal Architecture and the Bauplan Concept

**Week 4:**

- Animal Development, Life Histories, and Origins

**Week 5:**

- The Protists

**Week 6:**

- Phylum Porifera: The Sponges
- Phylum Cnidaria

**Week 7:**

- Phylum Ctenophora: The Comb Jellies
- Phylum: Platyhelminthes

**Week 8:**

- Phylum Nemertea: The Ribbon Worms
- Blastocoelomates and Other Phyla

**Week 9:**

- Phylum Annelida: The Segmented Worms
- Sipuncula and Echiura

**Week 10:**

- The Emergence of the Arthropods: Onychophorans, Tardigrades, Trilobites, and the Arthropod Bauplan

**Week 11:**

- Phylum Arthropoda: The Crustacea

**Week 12:**

- Phylum Mollusca

**Week 13:**

- Lophophorates
- Phylum Echinodermata

**Week 14:**

- Other Deuterostomes
- Perspectives on Invertebrate Phylogeny

Ankara University, Faculty of Agriculture , Department of Fisheries and Aquaculture, Programme of Fisheries and Aquaculture

## AQS421: Aquatic Invertebrates

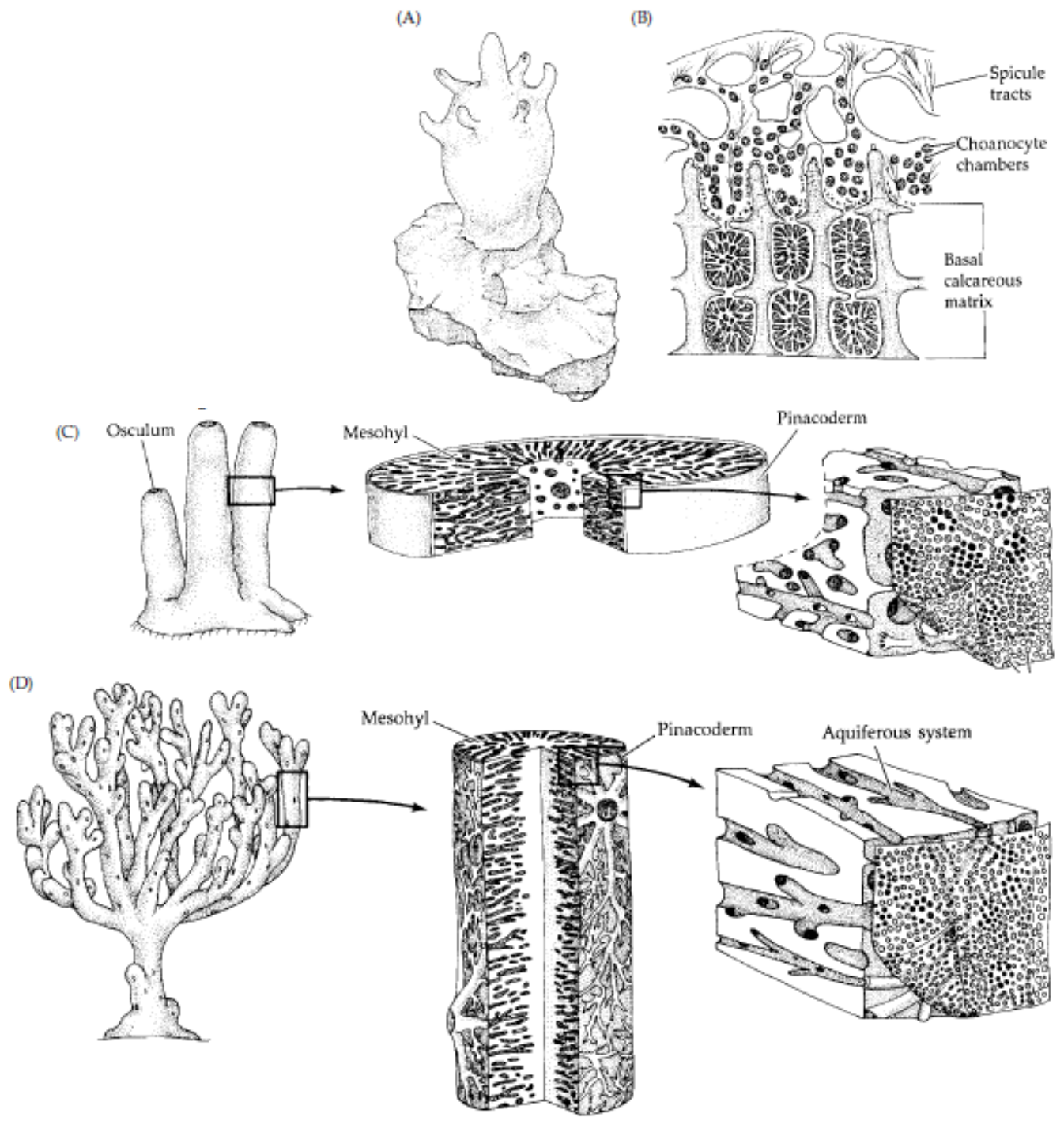
### 6. Week:

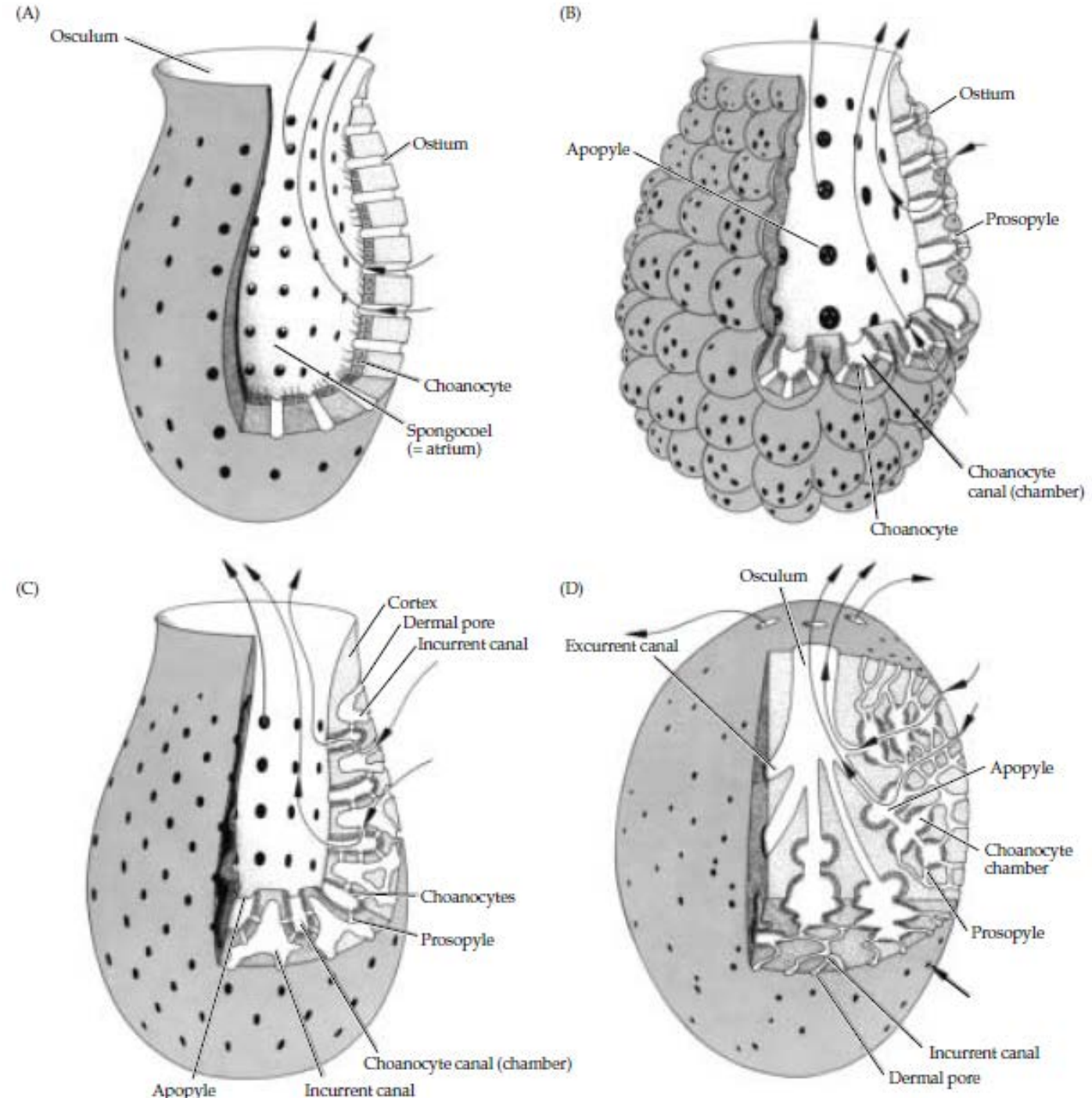
Phylum Porifera: The Sponges

Phylum Cnidaria

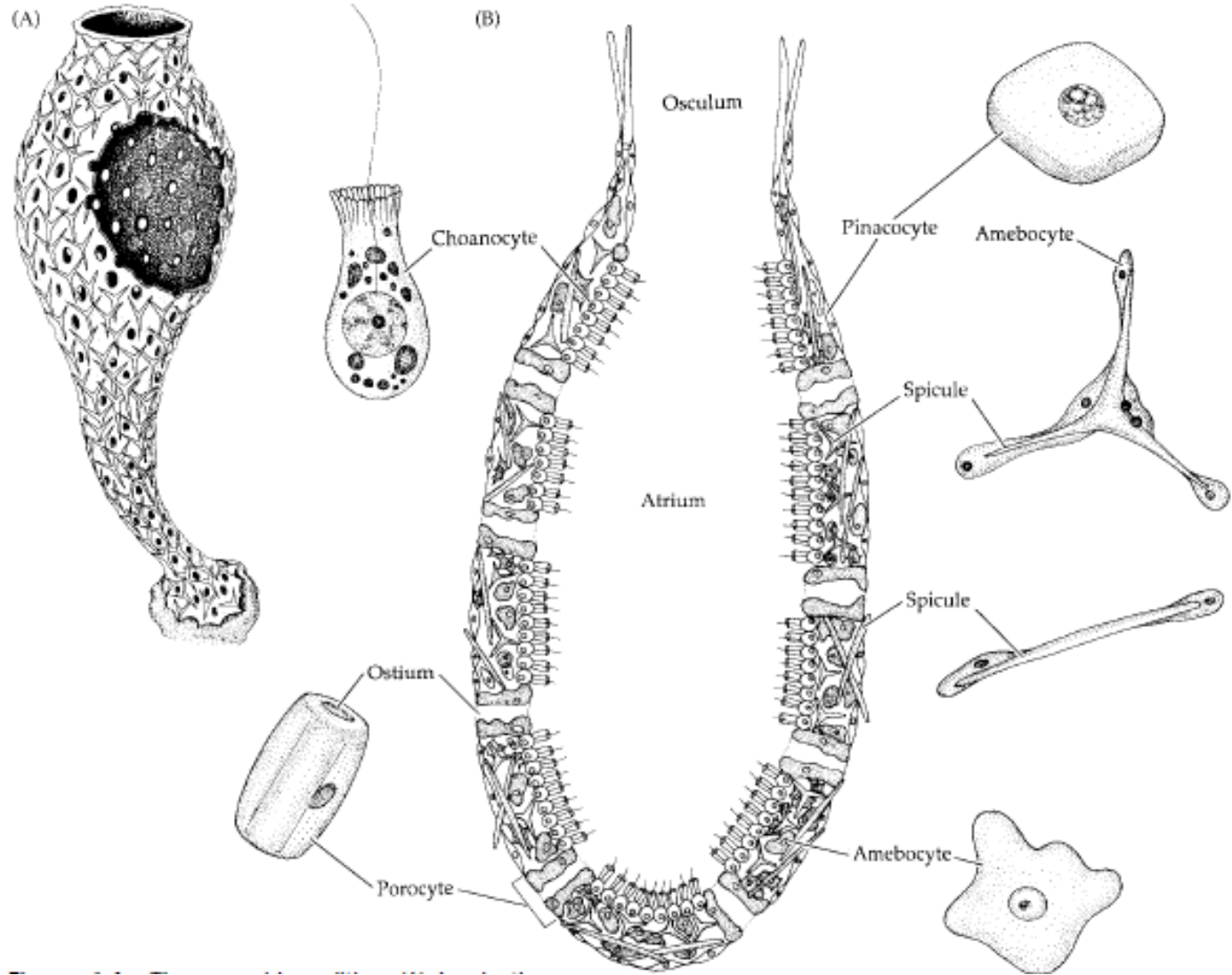
Reference: Brusca, R. C., & Brusca, G. J. **Invertebrates**. 2003. Sunderland, MA: Sinauer Associates, 2.

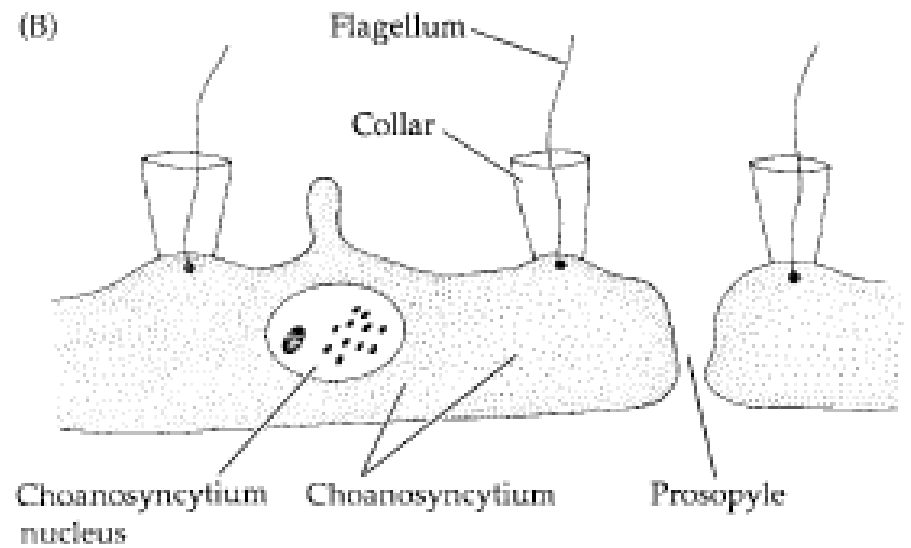
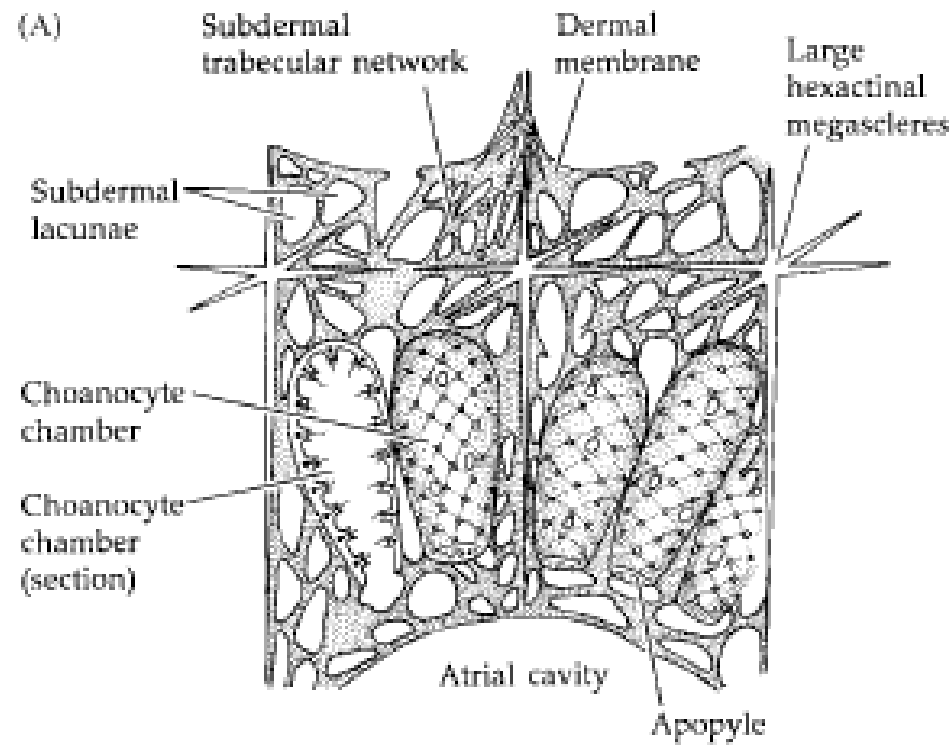
Figures & Tables are taken from: Reference: Brusca, R. C., & Brusca, G. J. **Invertebrates**. 2003. Sunderland, MA: Sinauer Associates, 2.



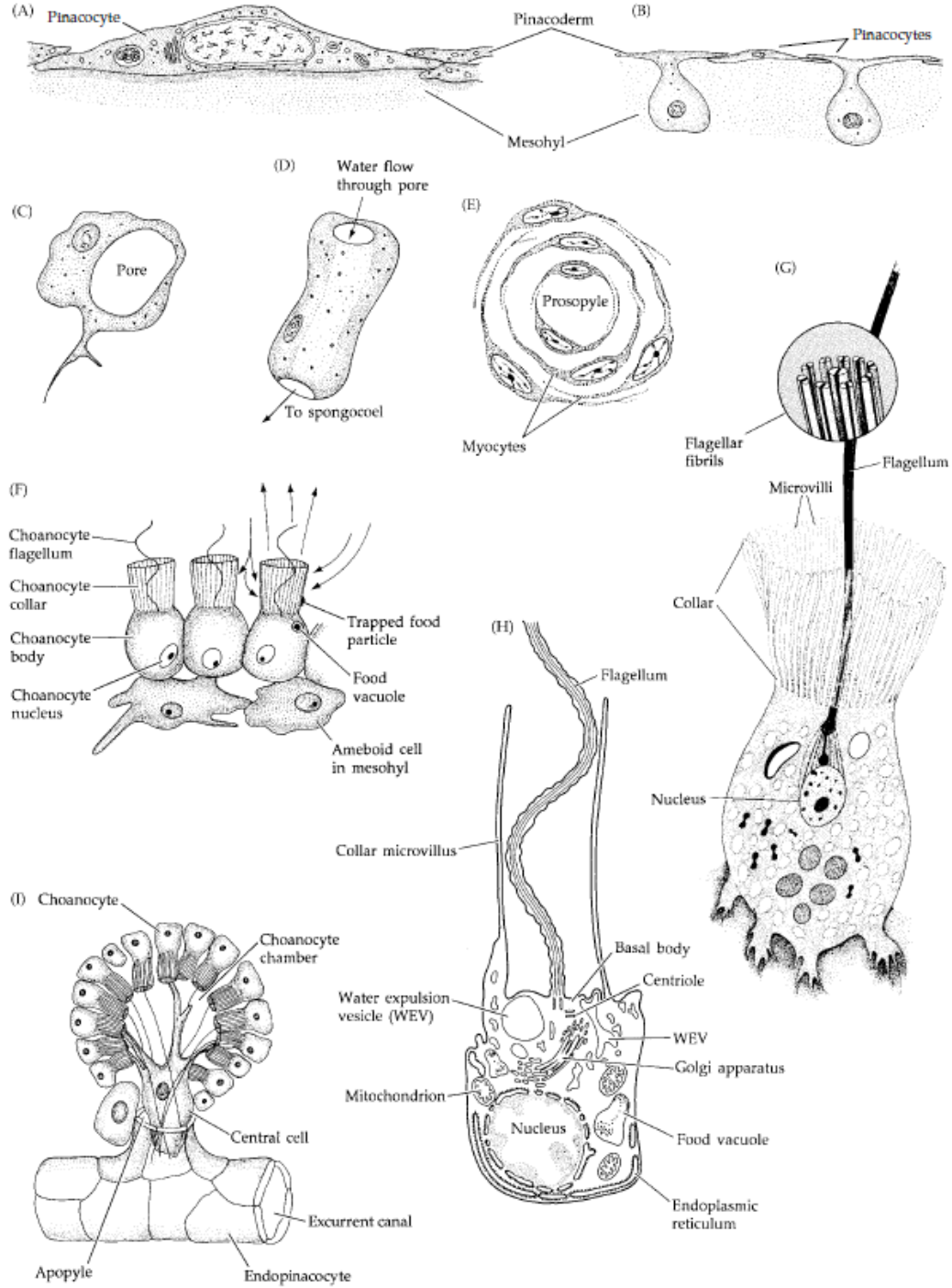


Figures & Tables are taken from: Reference: Brusca, R. C., & Brusca, G. J. **Invertebrates**. 2003. Sunderland, MA: Sinauer Associates, 2.



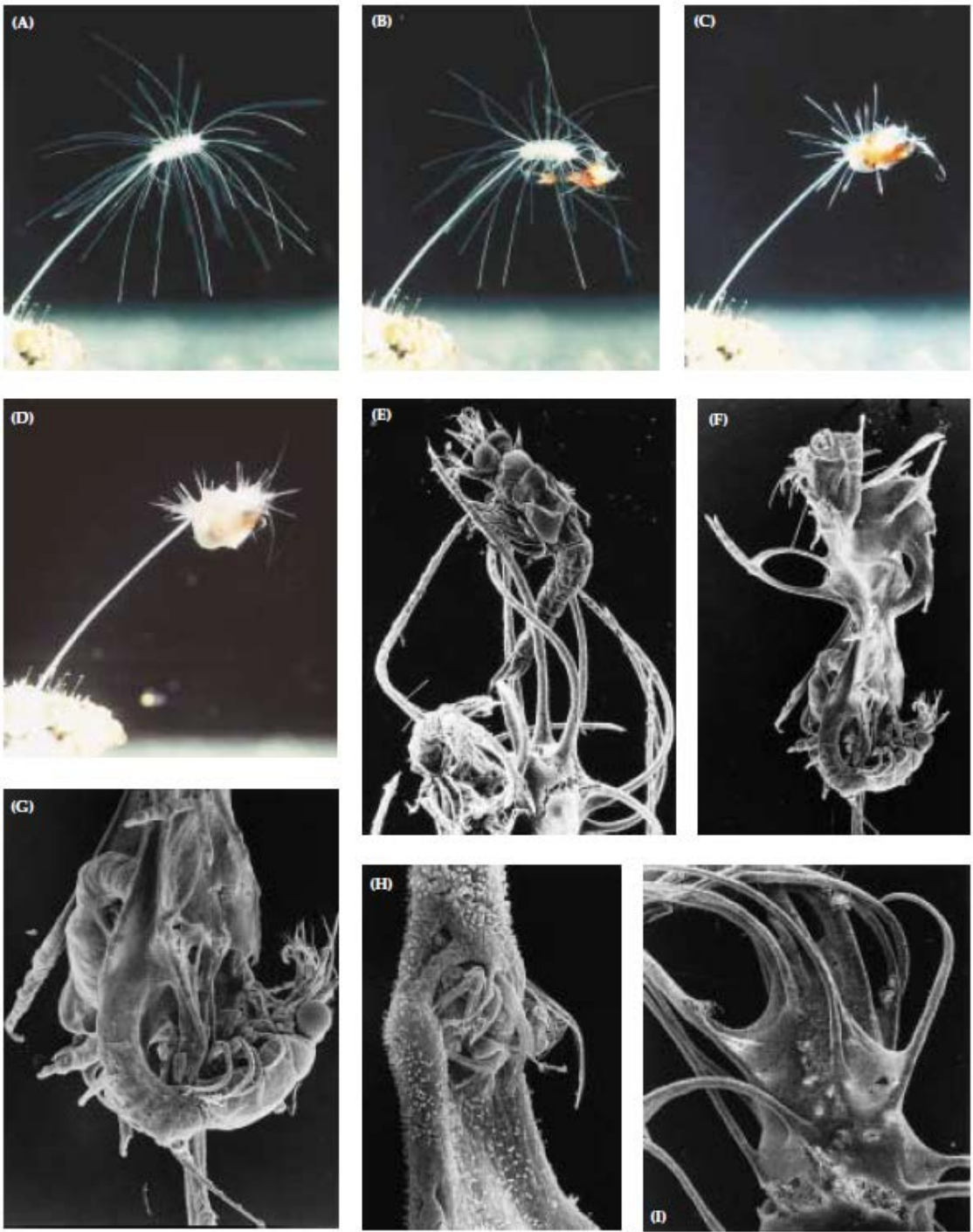


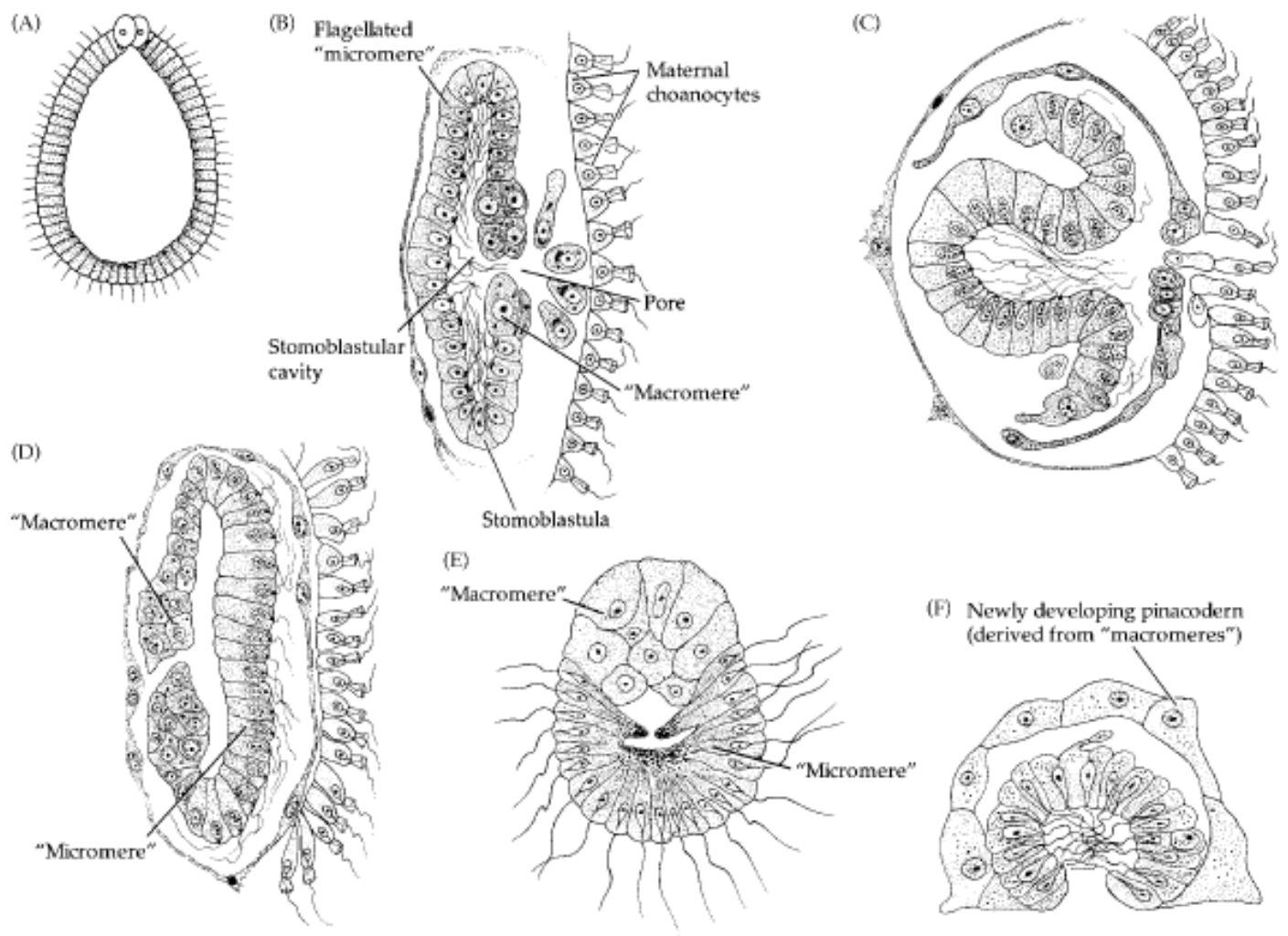
Figures & Tables are taken from: Reference: Brusca, R. C., & Brusca, G. J. **Invertebrates**. 2003. Sunderland, MA: Sinauer Associates, 2.



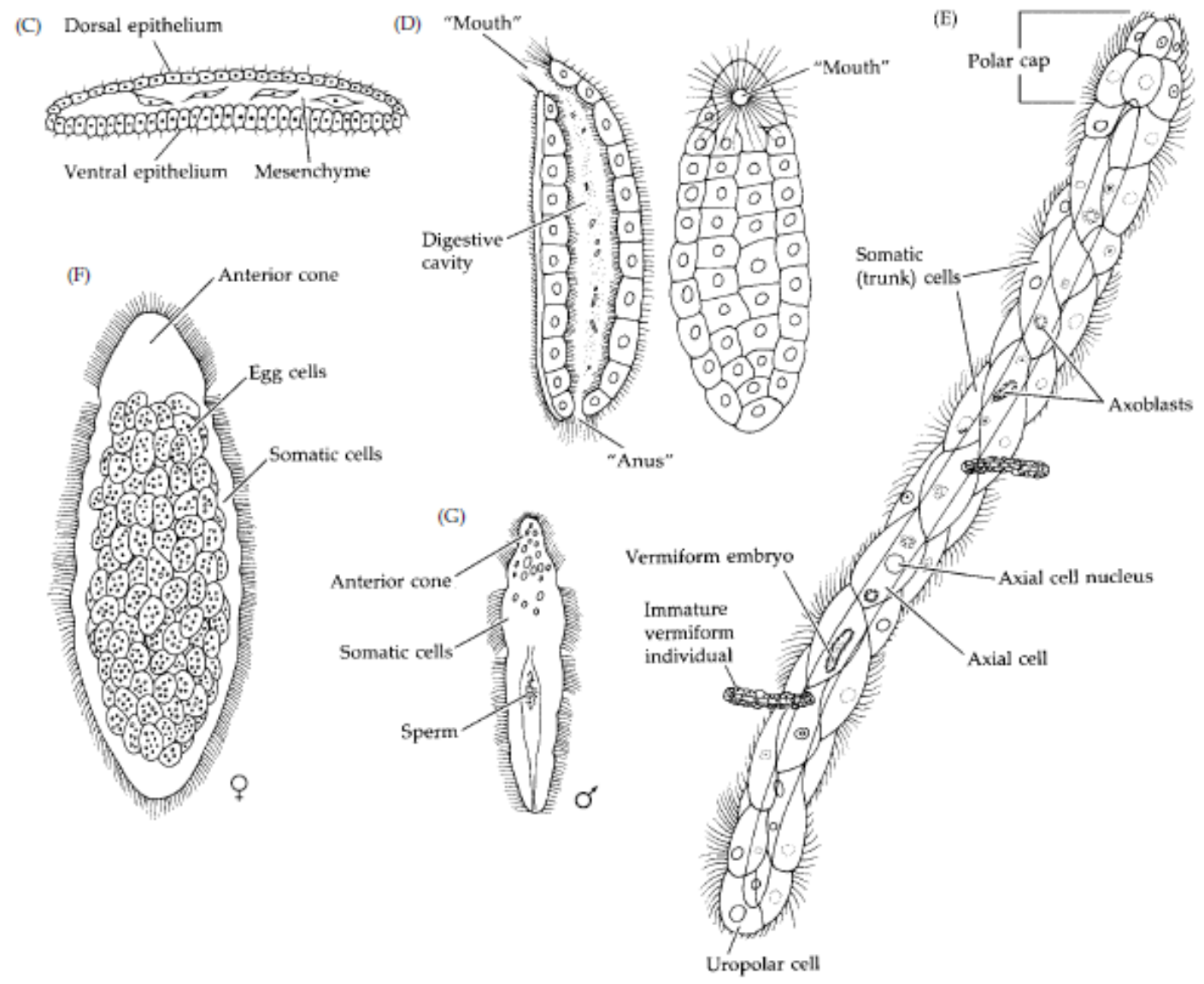


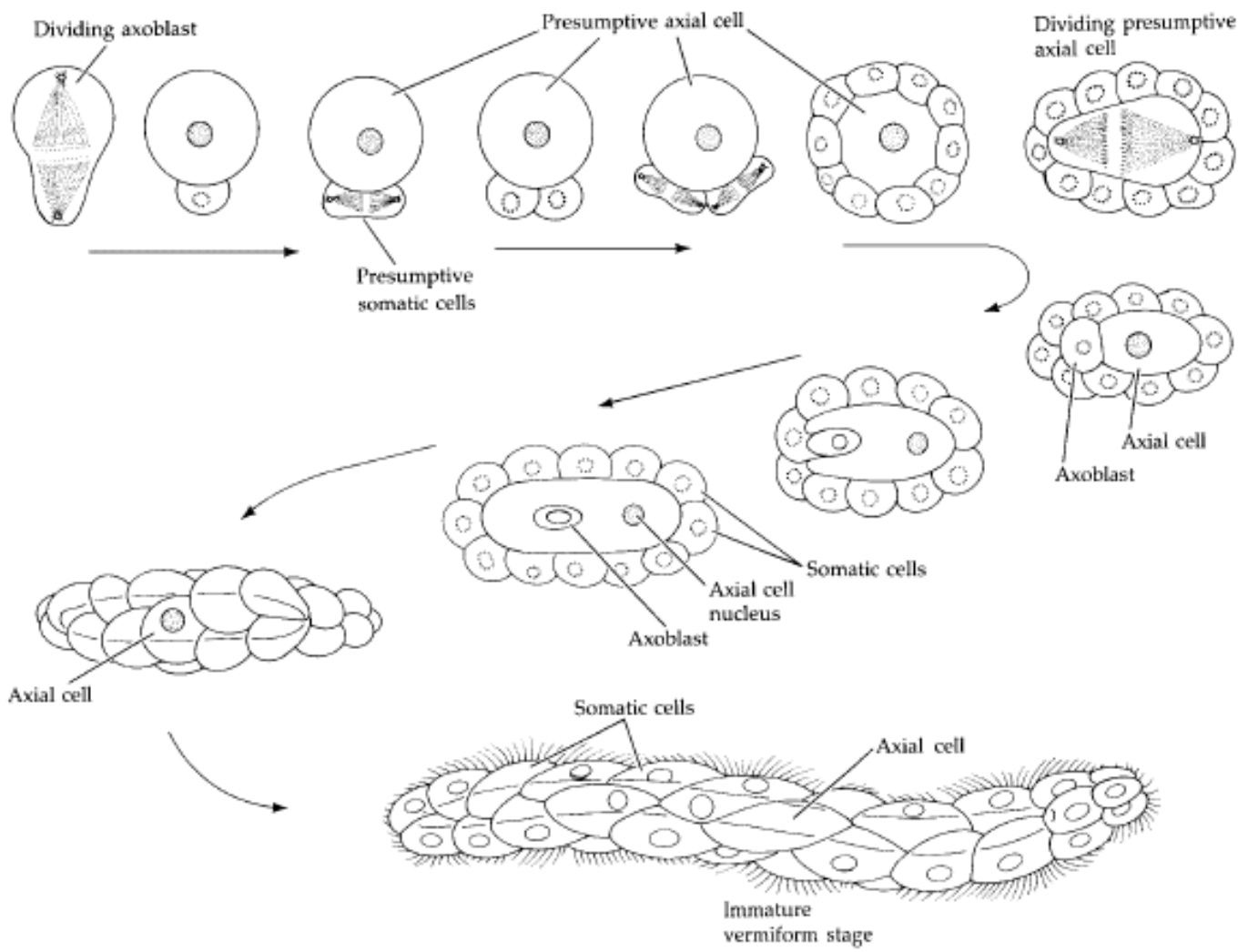
Figures & Tables are taken from: Reference: Brusca, R. C., & Brusca, G. J. **Invertebrates**. 2003. Sunderland, MA: Sinauer Associates, 2.

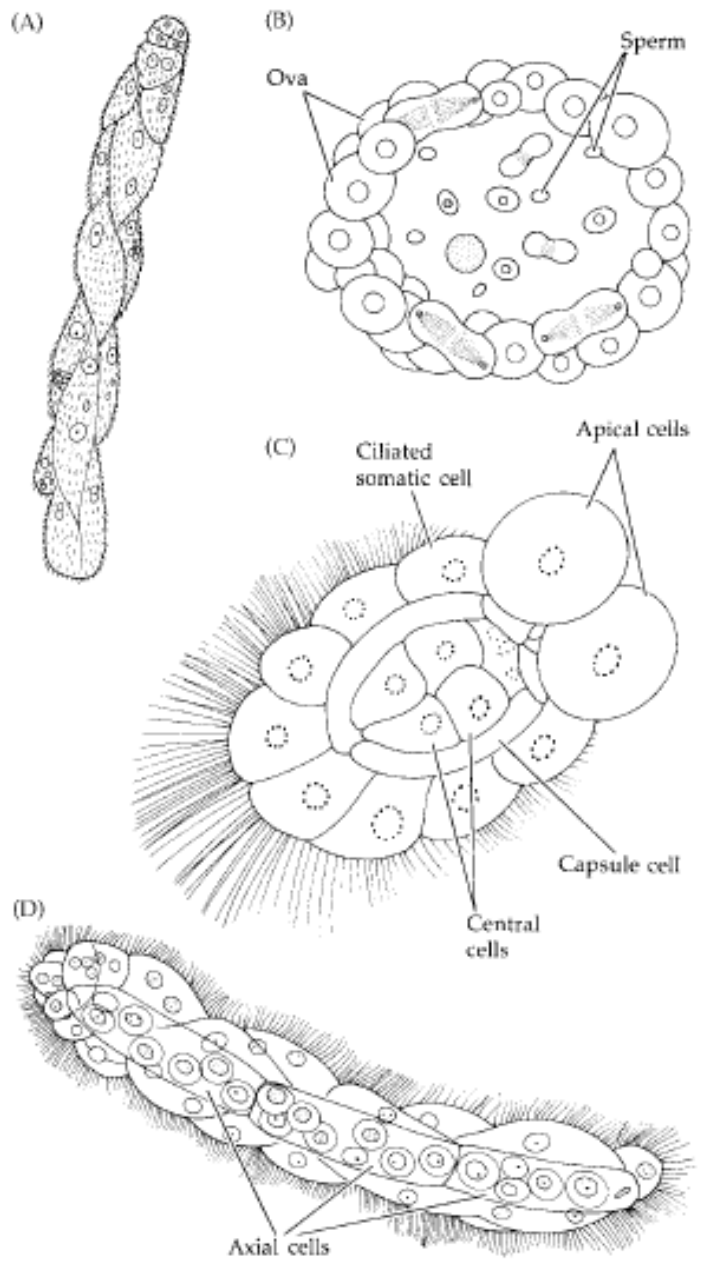




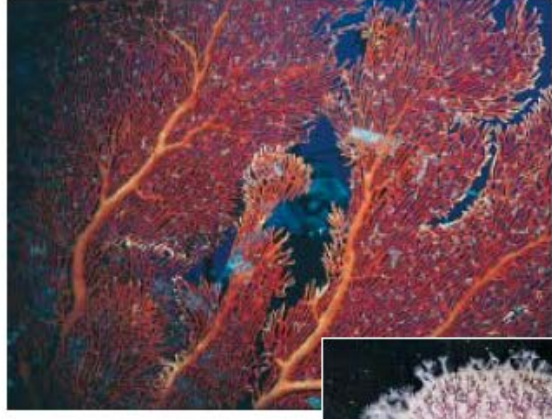
Figures & Tables are taken from: Reference: Brusca, R. C., & Brusca, G. J. **Invertebrates**. 2003. Sunderland, MA: Sinauer Associates, 2.



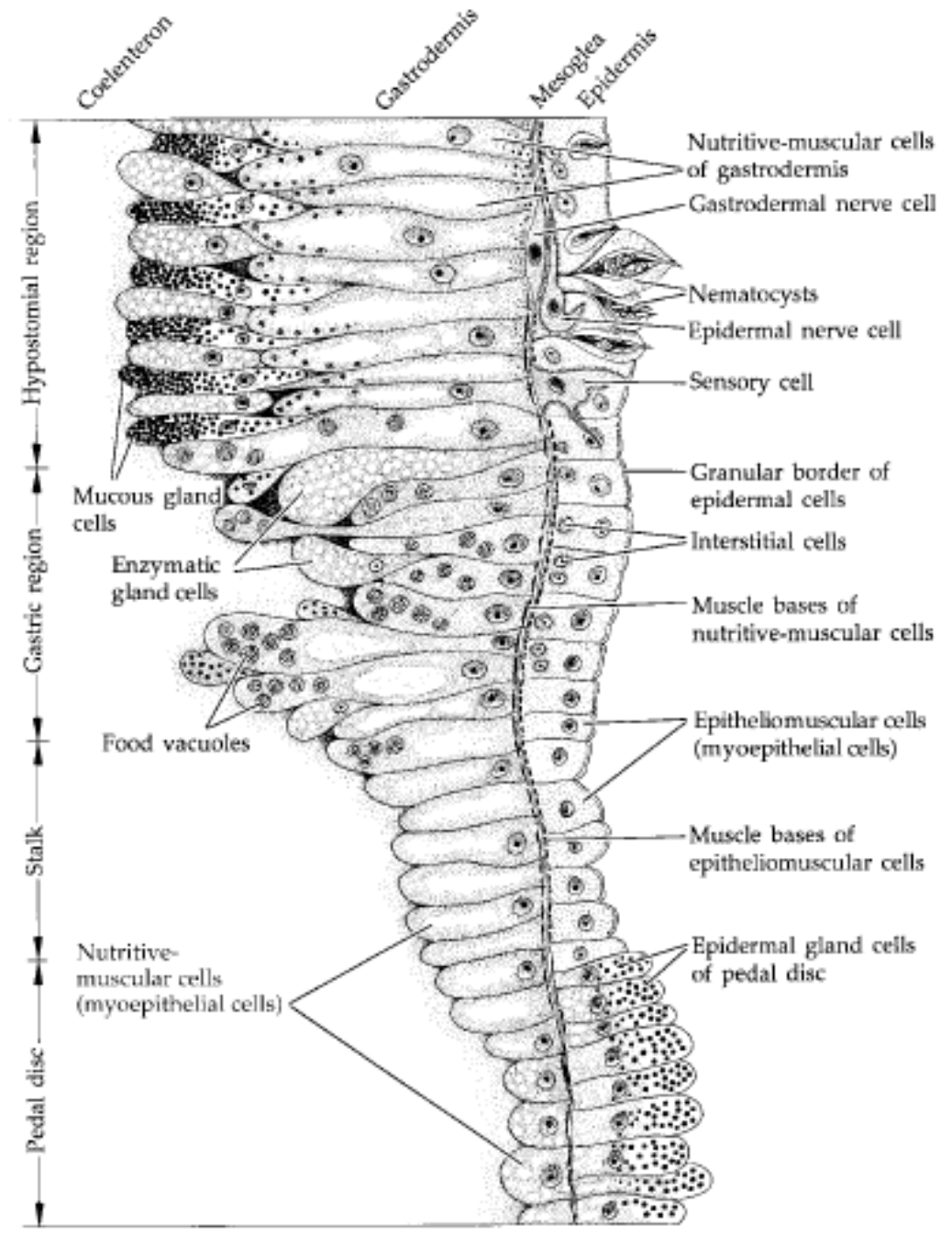


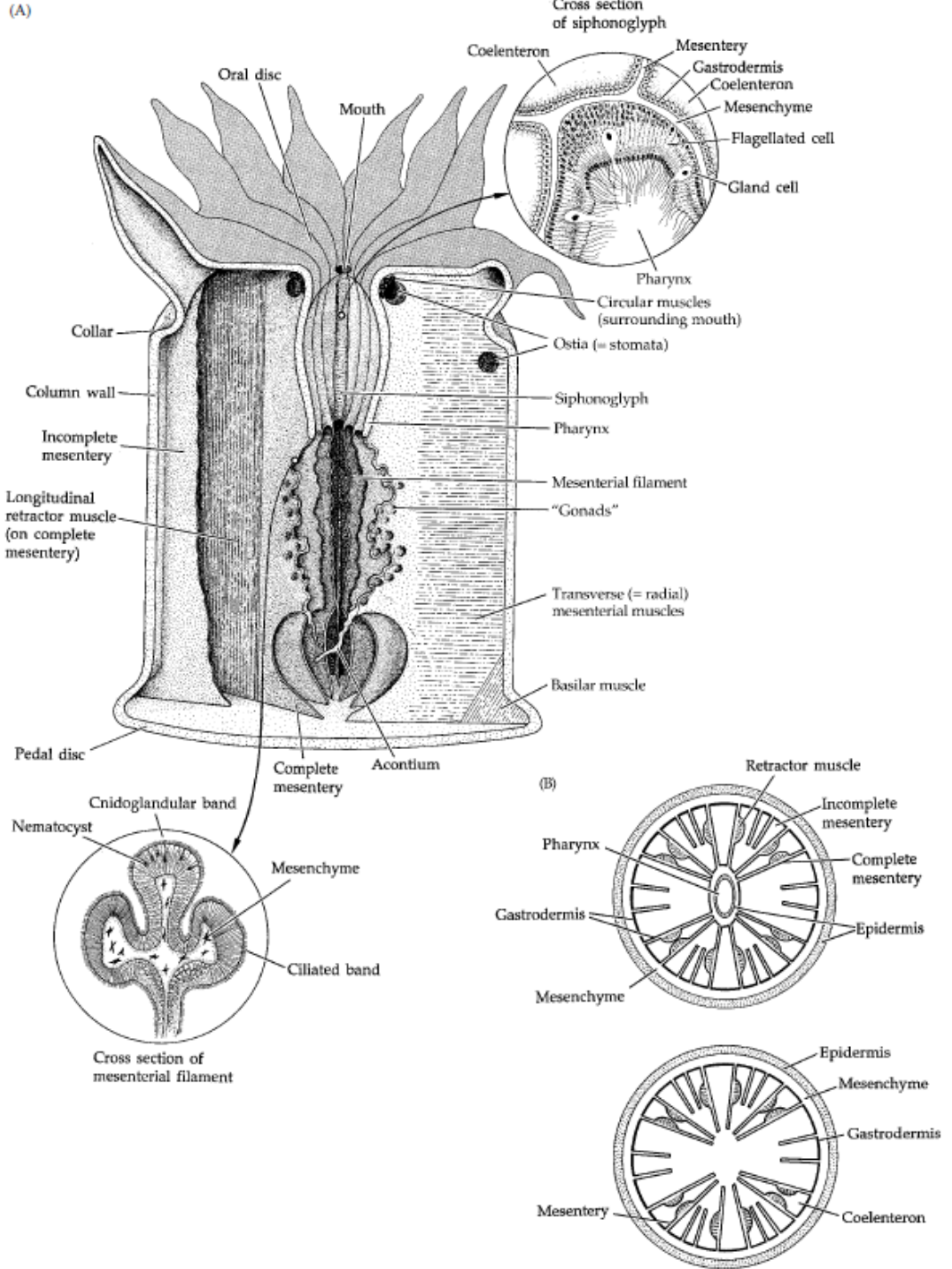


Figures & Tables are taken from: Reference: Brusca, R. C., & Brusca, G. J. **Invertebrates**. 2003. Sunderland, MA: Sinauer Associates, 2.

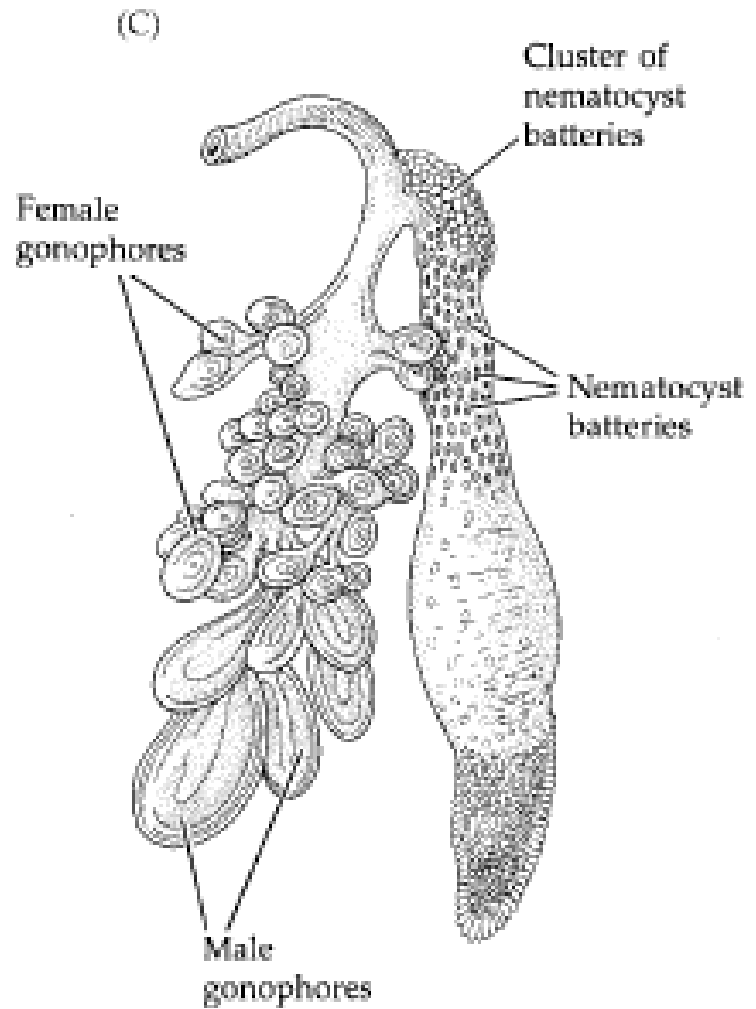
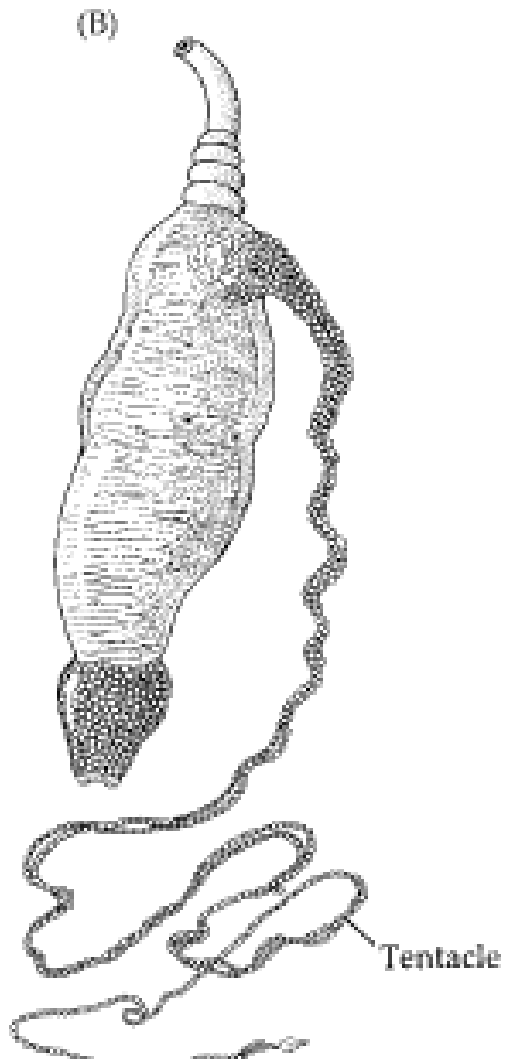
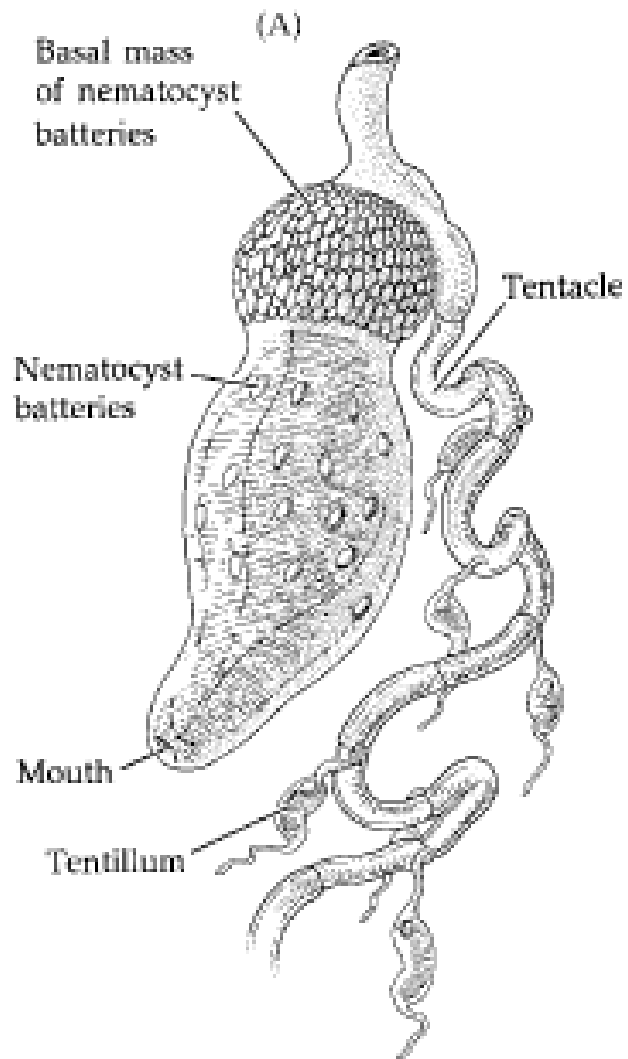


Figures & Tables are taken from: Reference: Brusca, R. C., & Brusca, G. J. **Invertebrates**. 2003. Sunderland, MA: Sinauer Associates, 2.

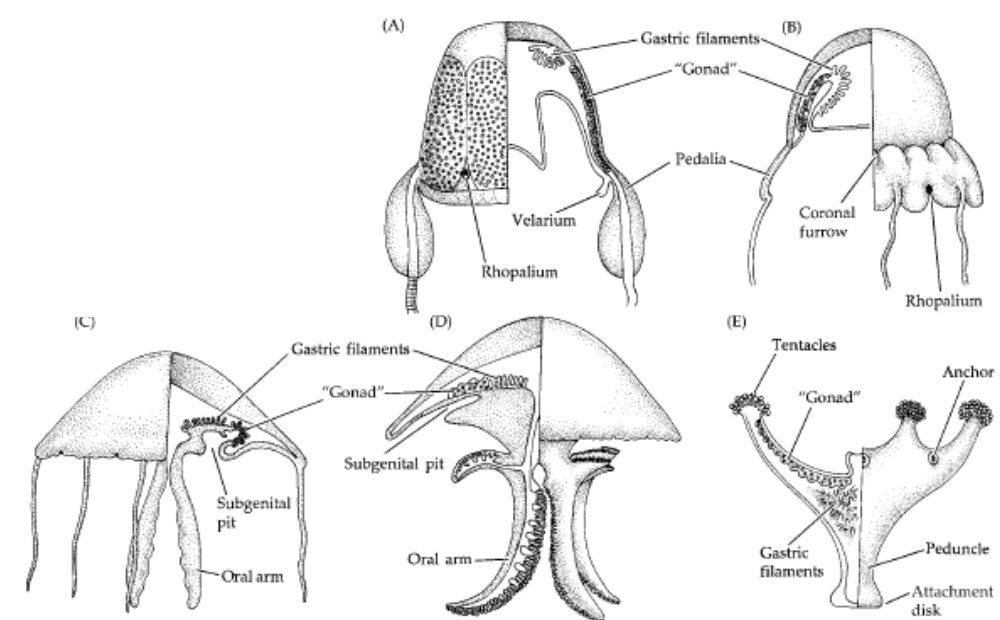
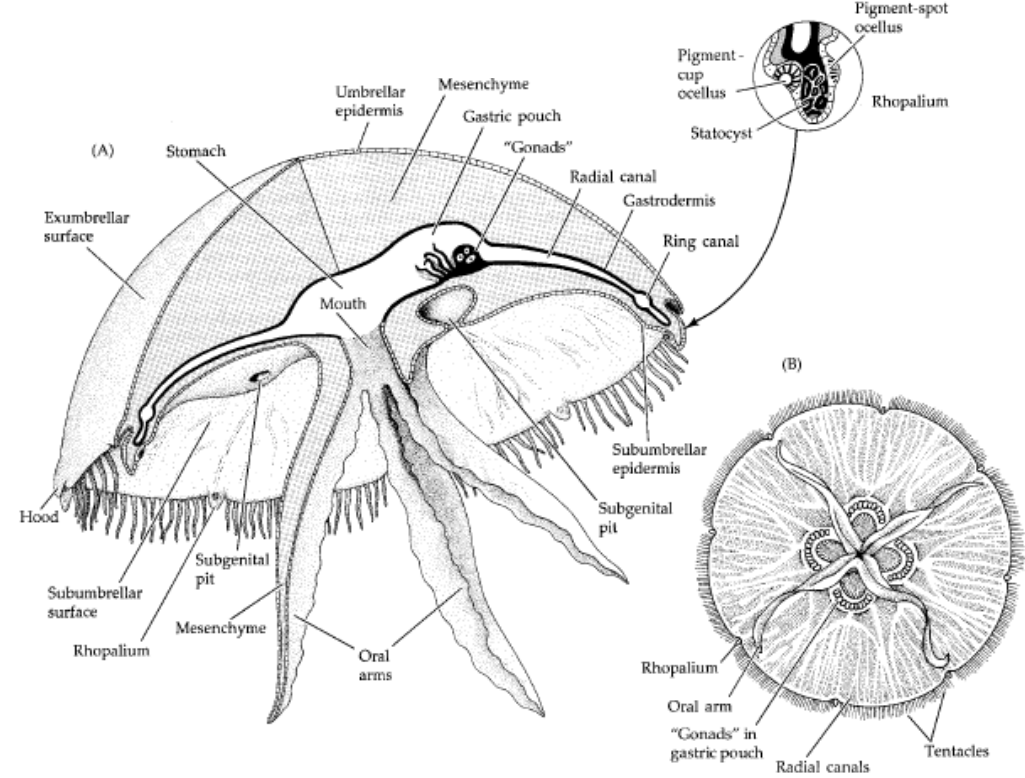


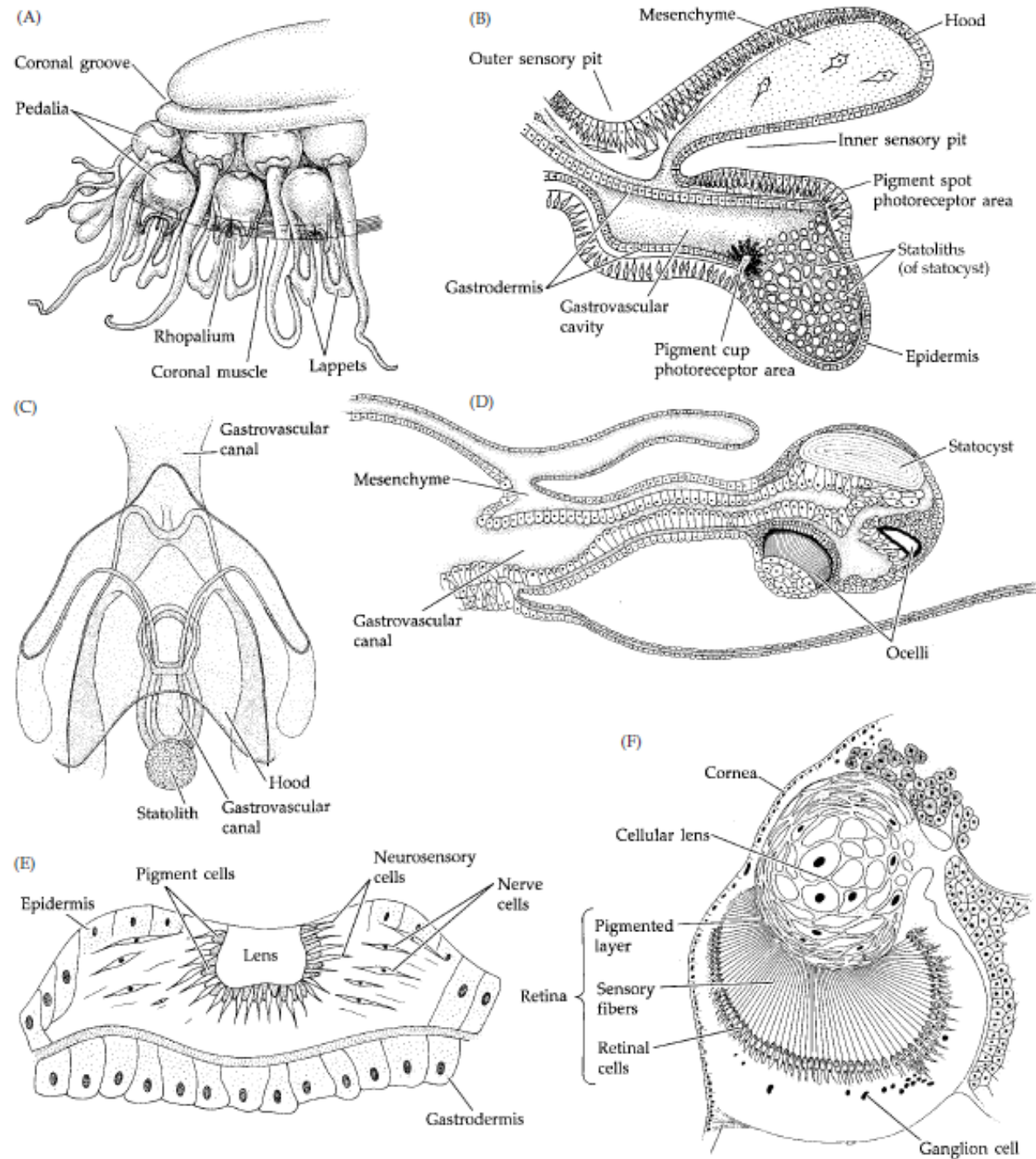


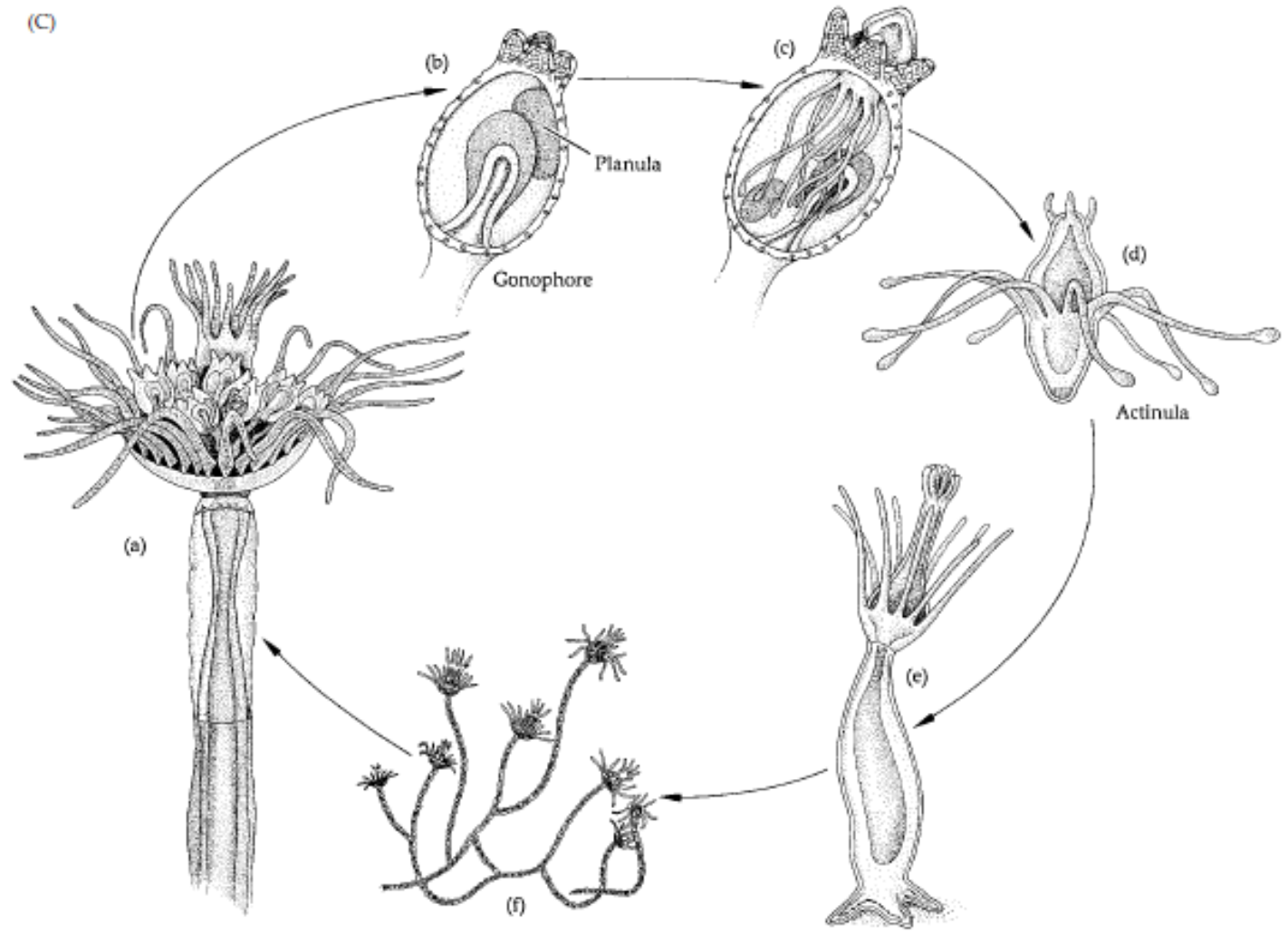




Figures & Tables are taken from: Reference: Brusca, R. C., & Brusca, G. J. **Invertebrates**. 2003. Sunderland, MA: Sinauer Associates, 2.







6

Figures & Tables are taken from: Reference: Brusca, R. C., & Brusca, G. J. **Invertebrates**. 2003. Sunderland, MA: Sinauer Associates, 2.

