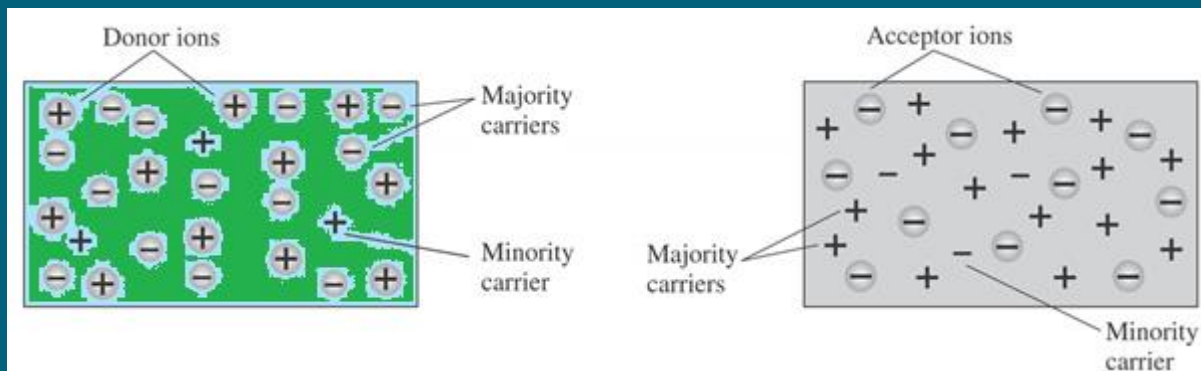


EE-202 Electronics

Chapter-1

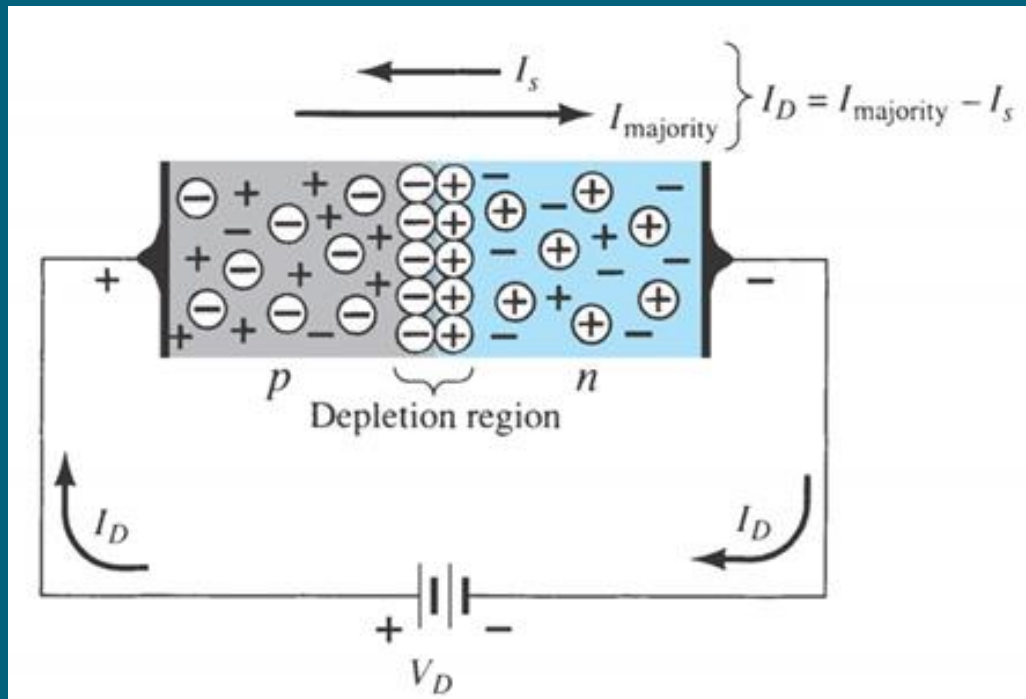
Semiconductor Diodes



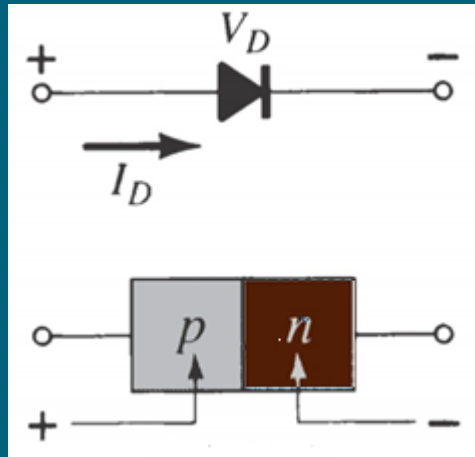
n-type material

p-type material.

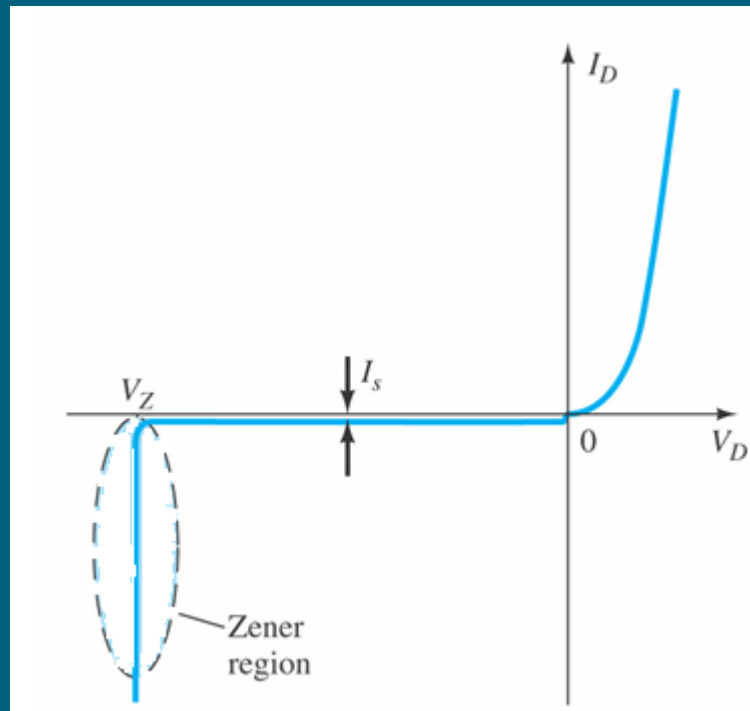
Forward-biased p-n junction.



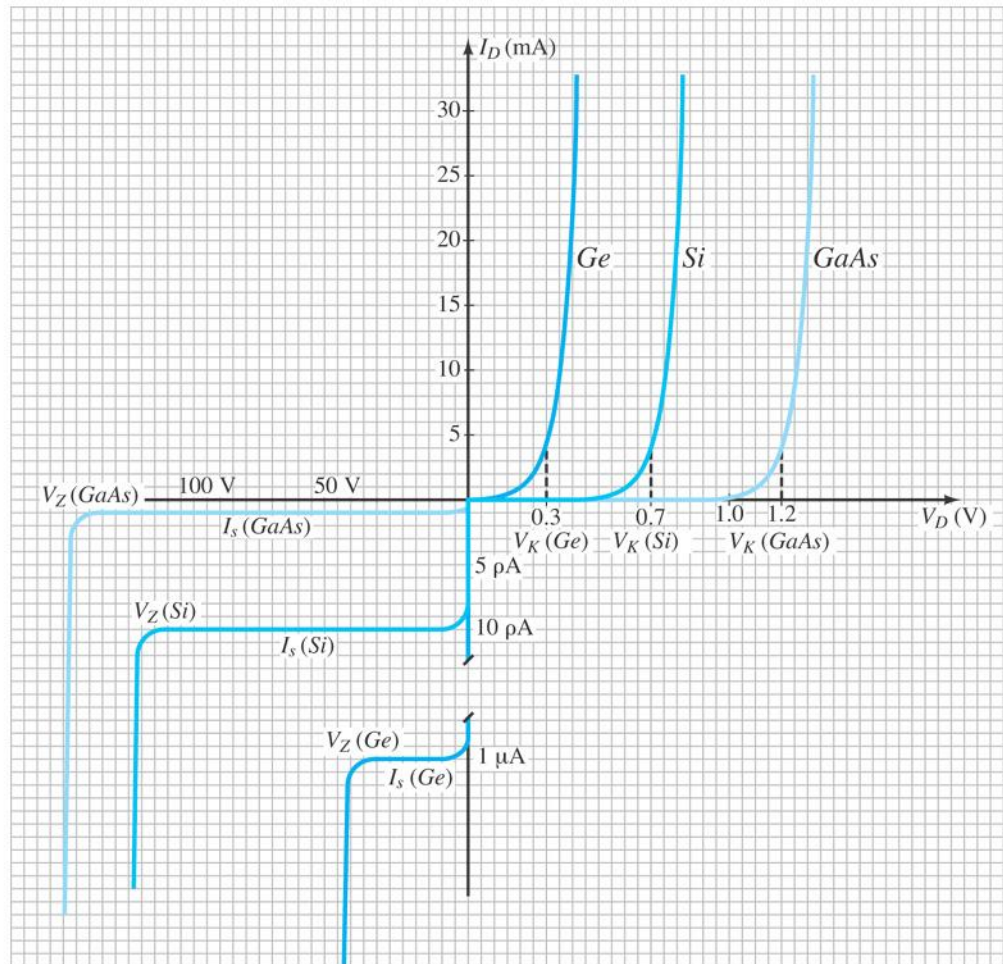
Forward-bias p–n junction and current direction.



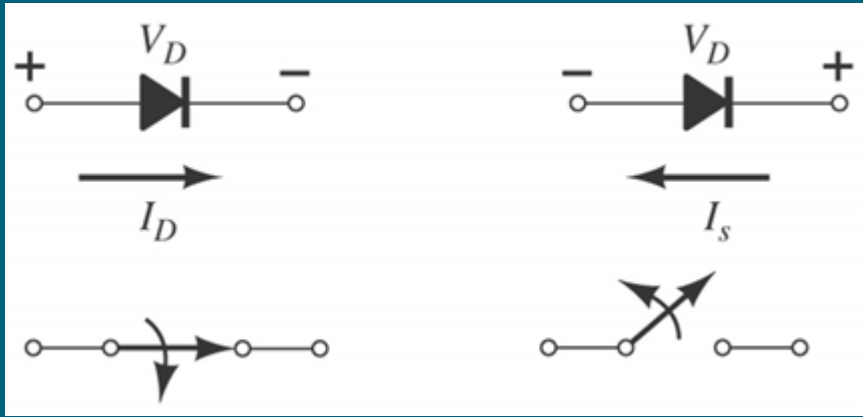
Zener region.



Ge, Si, and GaAs diodes Characteristic curves.

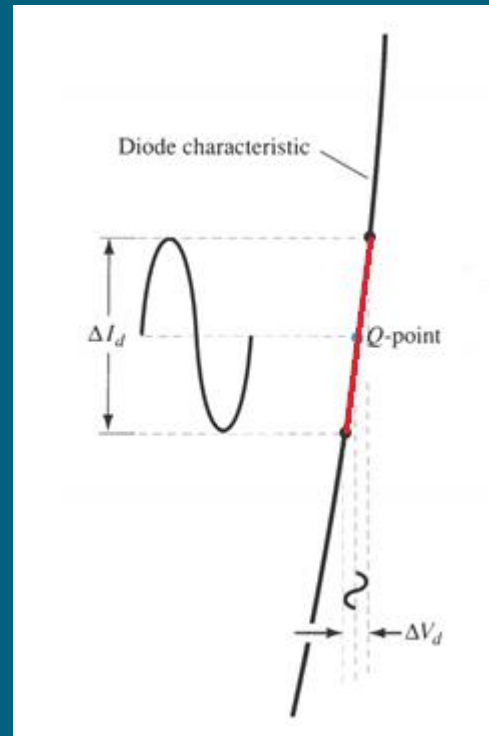


Ideal diode:



forward-biased

reverse-biased.



Dynamic or ac resistance.