

Plant Histology

Prof. Dr. N. Münevver Pınar

(6)

SIMPLE TISSUES

2. Collenchyma

- *Collenchyma* (Greek word “Colla” means “glue”) is another group of simple permanent tissue consisting of living cells found in plants. Collenchyma is living mechanical tissue. Collenchyma cells have thick primary cell wall and simple pit. Their thick cell walls are composed of the compounds cellulose and pectin. These cells are often found under the epidermis, or the outer layer of cells in young stems and in leaf veins.

There are four types of collenchyma on the basis of nature of wall thickening arrangement of cells.

- 1. Angular collenchyma**
- 2. Annular collenchyma**
- 3. Lamellar collenchyma**
- 4. Lacunar collenchyma**

Angular collenchyma

- Thickening materials deposited only at the corners of the cells and found under the epidermis.

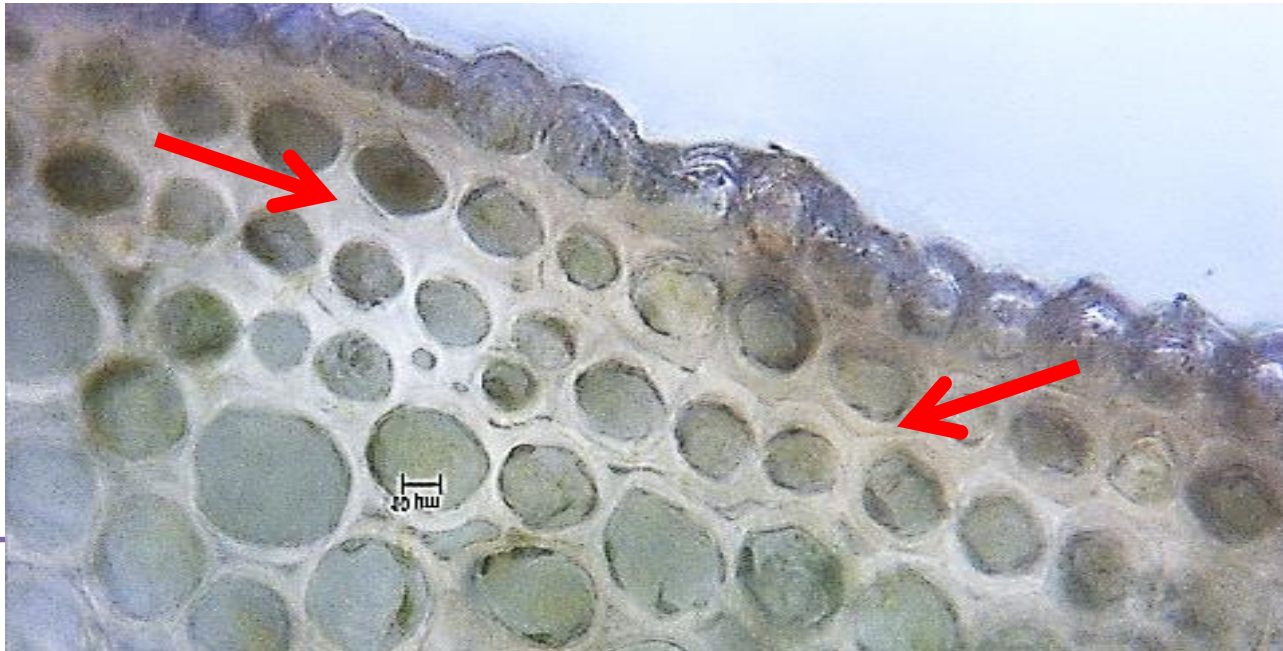


Annular collenchyma

*They are thickened collechymatus cells.

Lamellar collenchyma

*Wall thickening is resticted to tangential walls of the cells



Lacunar collenchyma

- Wall thickening is restricted around the intercellular spaces.

