

# Plant Histology

Prof. Dr. N. Münevver Pınar

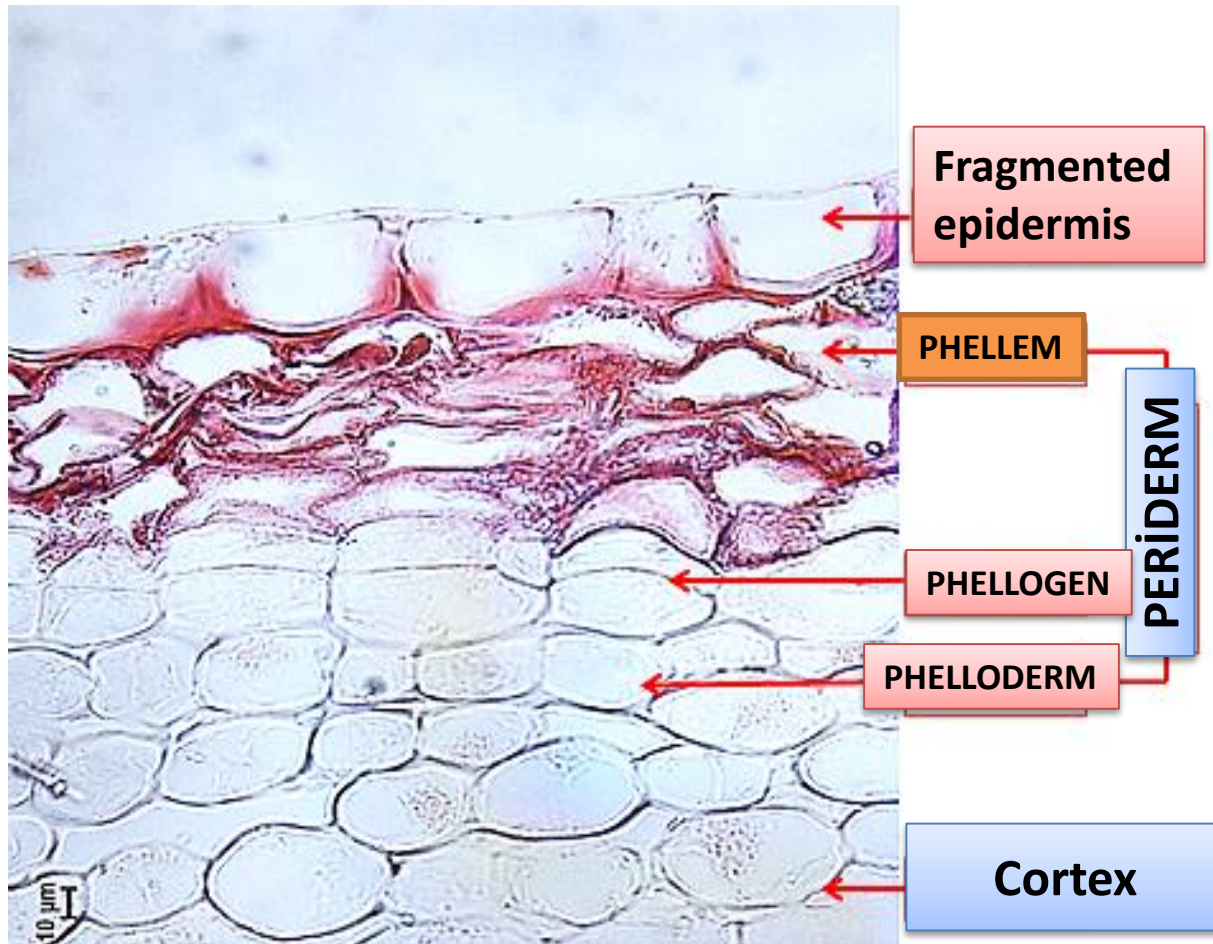
(11)

# PROTECTION (Dermal) TISSUE

## 2. PERIDERM

- *Periderm* is a secondary tissue. In most plants that have secondary growth, a layer of periderm develops, which is also known as *bark*. It replaces the epidermis of roots and stems in secondary growth. The function of periderm is protective.

Periderm may be formed all around the stem or start in small patches and then spread out. The formation of the phellogen which is the meristem for the periderm is the first step. Cells of phellogen then divide to form the cells of phellem and phelloderm.



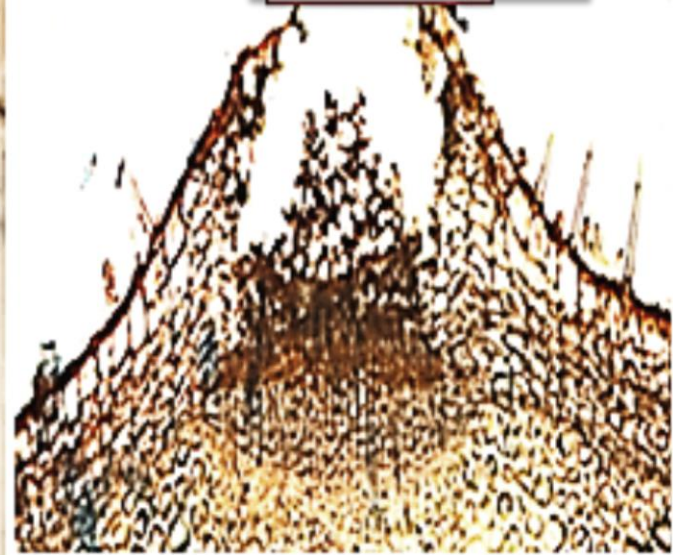
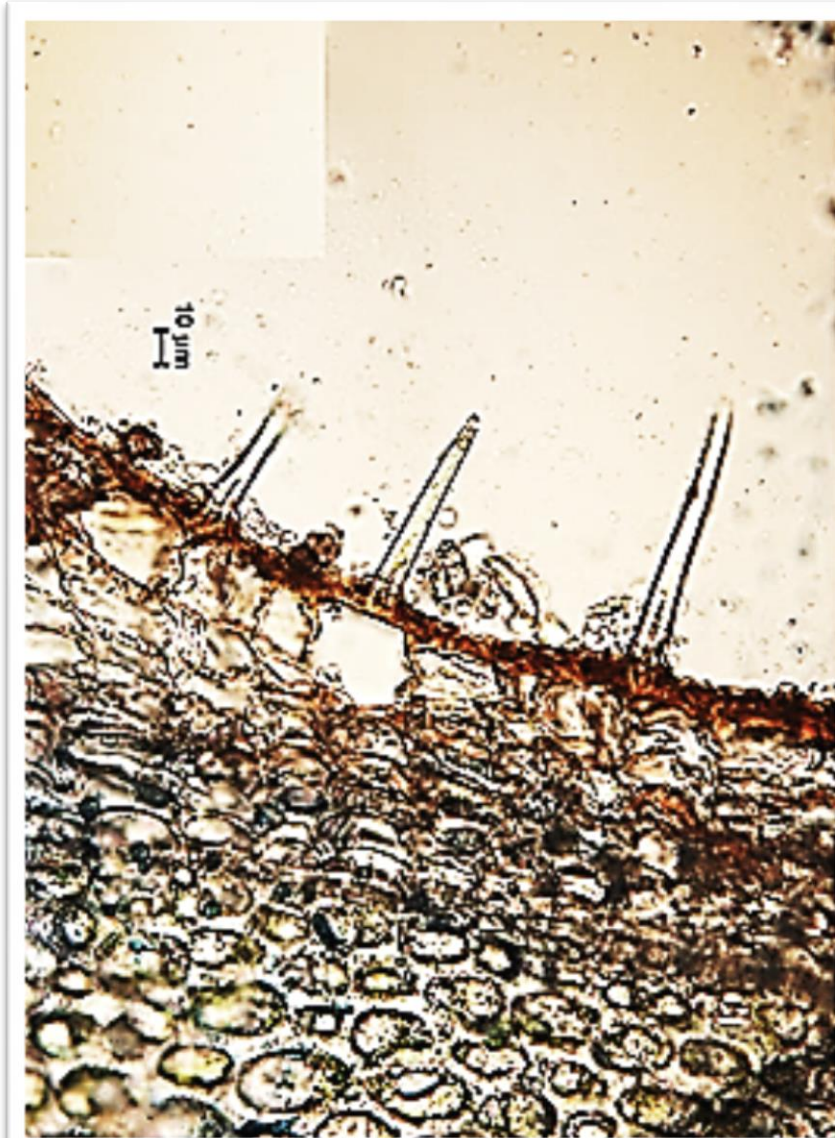
Periderm consists of three layers, the **phellogen** (cork cambium), **phellem** (cork) and **phelloderm** (secondary cortex).

# Lenticel

*Lenticel* may be on the epidermis of fruits or in the periderm. It replaces stomata in secondary growth.

Lenticels are generally lens shaped convex side inside and outside. The function of lenticel is gases exchange.

# LENTICEL



PERIDERM