

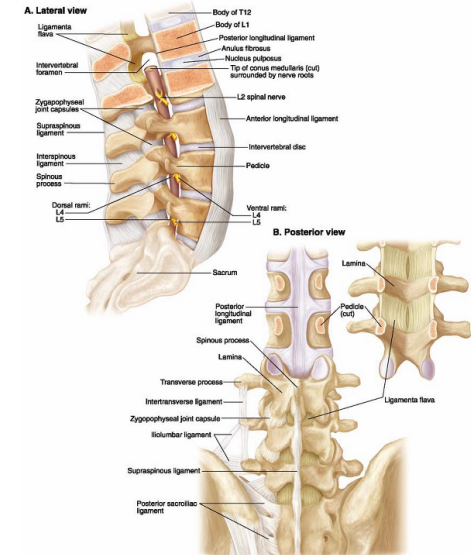
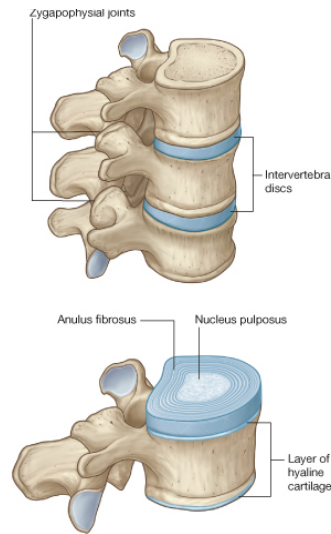
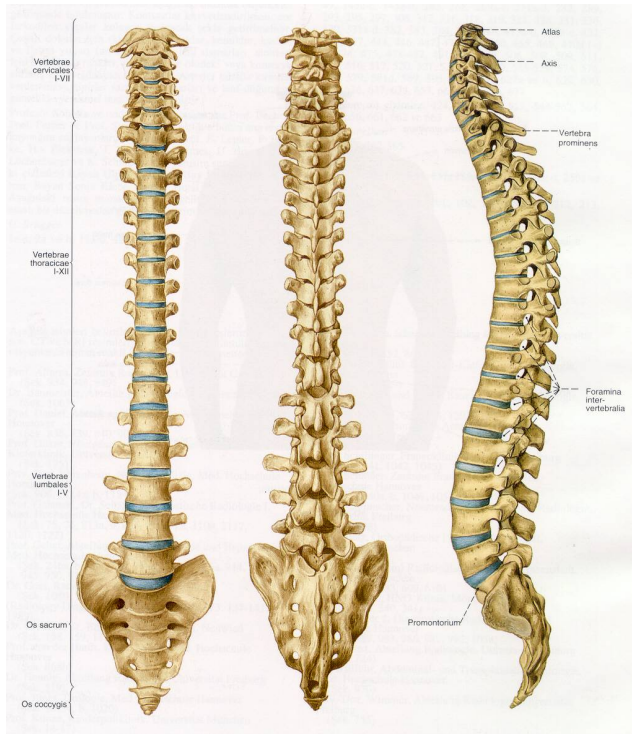
Pro Anatomi

Spinal kolon kemikleri, kasları ve omurga ortezleri
ile ilişkilendirilmesi

14.hft

Serap Alsancak

Spinal kolon



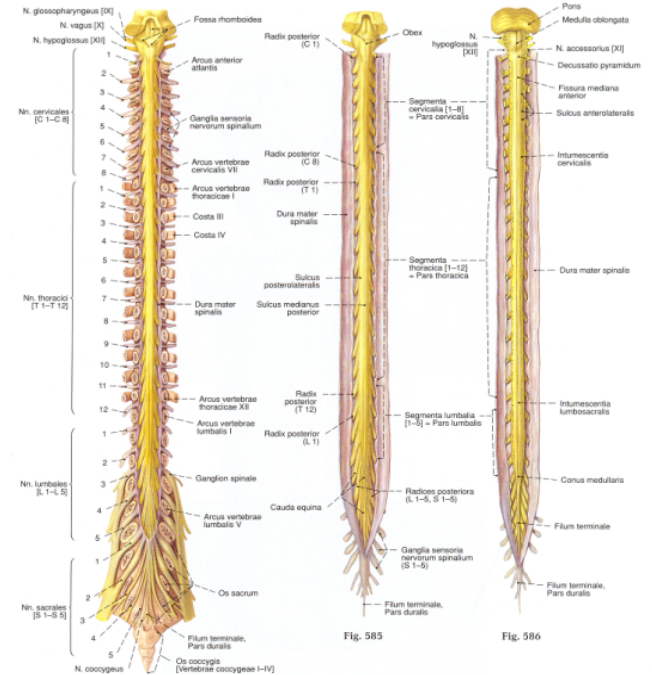
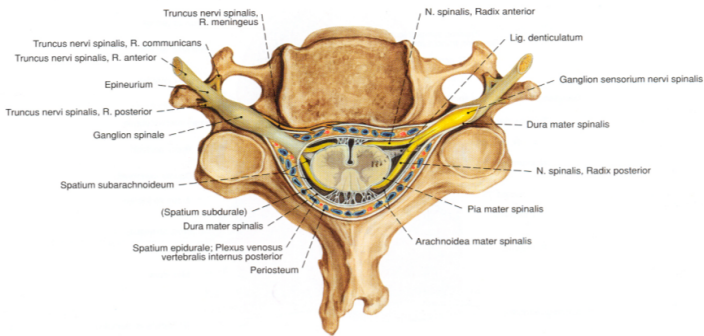
Servikal lordoz (sekonder)
 Torakal kifoz (primer)
 Lumbal lordoz (sekonder)
 Sakral kifoz (primer)

Plexuslar ve dağılımı-Tartışma



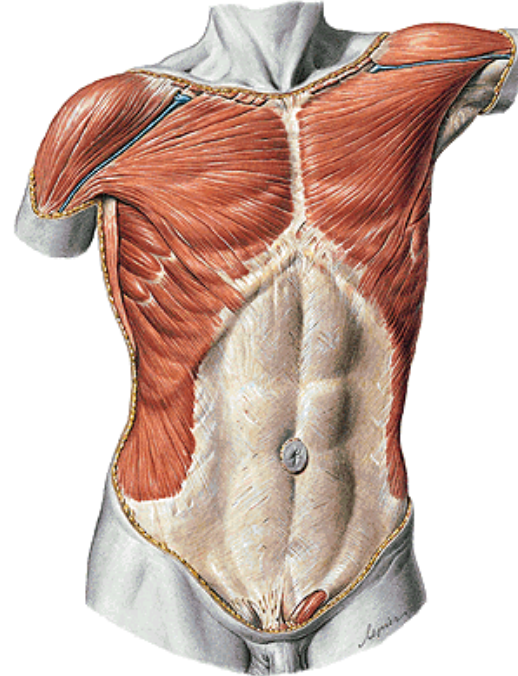
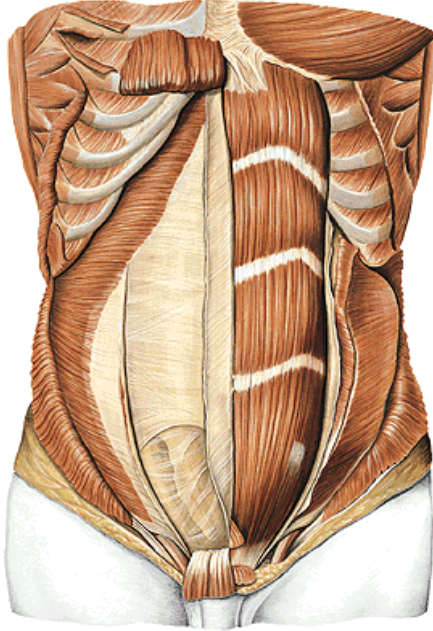
Plexus cervicalis
Plexus brachialis

Plexus lumbalis
Plexus sacralis



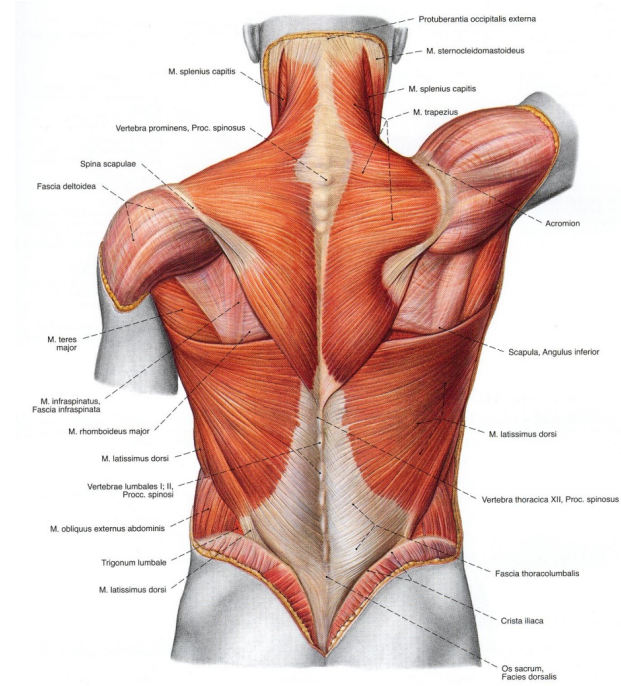
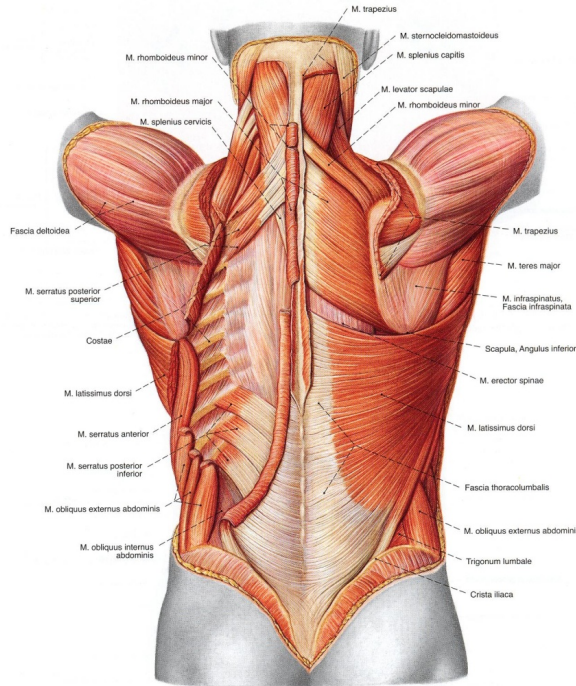
Gövde ön yüz kasları

- M. Pectoralis
- M. Abdominus (Rectus abdominus/Transversus abdominus/Obligus abdominus internus ve externus)
- M. Serratus Anterior



Gövde ön yüz kasları

- M. Trapezius
- M. Latissimus dorsi



Gövde ortezi ve sınırları - Tartışma

