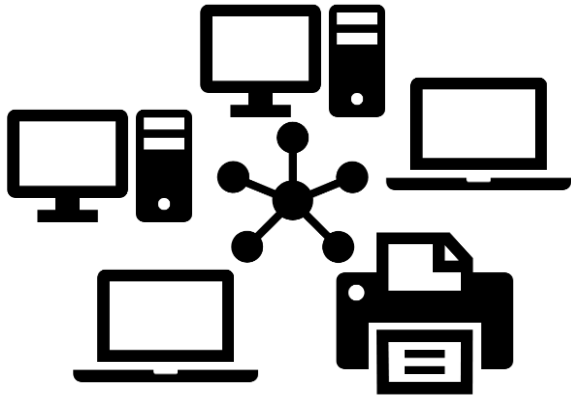


UNIT 8 - Computer Networks

Pg. 75 - 82

Pg. 75

Match the correct name of the network types



A. WAN (Wide Area Network)

A wide area network (WAN) is a telecommunications network or computer network that extends over a large geographical distance. Wide area networks are often established with leased telecommunication circuits.

https://en.wikipedia.org/wiki/Wide_area_network

B. LAN (Local Area Network)

A local area network (LAN) is a computer network that interconnects computers within a limited area such as a residence, school, laboratory, university campus or office building[1] and has its network equipment and interconnects locally managed. By contrast, a wide area network (WAN), not only covers a larger geographic distance, but also generally involves leased telecommunication circuits or Internet links. An even greater contrast is the Internet, which is a system of globally connected business and personal computers.

https://en.wikipedia.org/wiki/Local_area_network

Pg. 76

Read the text:

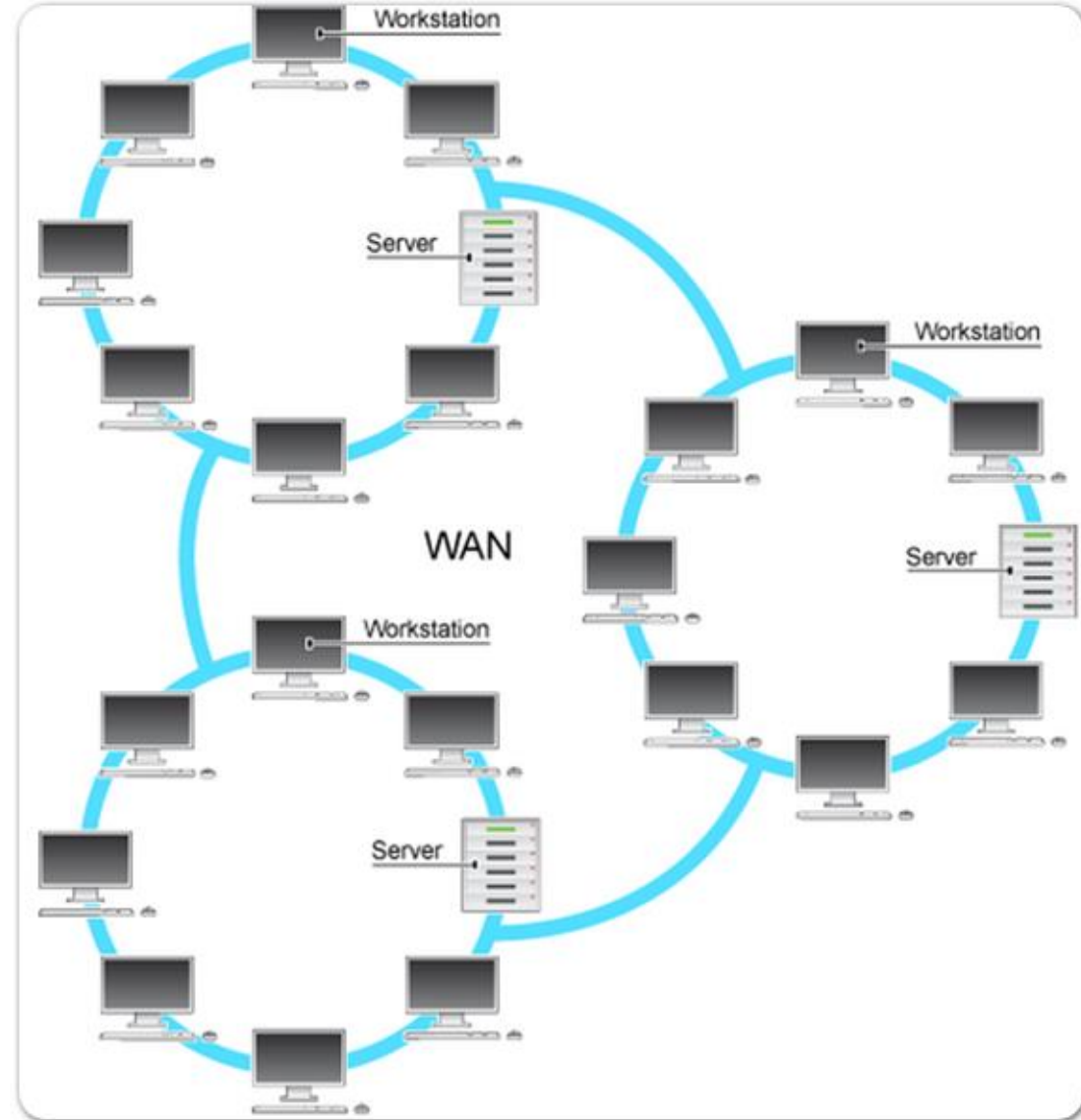
What is the difference
between LAN and WAN?

Network: Şebeke

Local Area Network: Yerel Bölge
Şebekesi

Wide Area Network: Geniş Bölge
Şebekesi

Commonplace: Alışıldık



Pg. 77

Answer the questions

DSL = Digital Subscriber Line

Subscribe: Kaydolmak

Proximity: Yakınlık

1. The main difference is the area covered by the network.
2. LANs are used in small geographic locations like a single room, a few rooms, or a building.
3. WANs cover great distances and are not limited to a single location.
4. A DSL is used for connecting to the Internet.
5. Due to proximity of the computers LANs operates faster than WANs.
6. The data on a WAN needs to pass across public phone lines in order to reach its intended destination.
7. Because with the WAN the data would need miles and miles of cabling, or in some cases satellites.

Pg. 78-a

Match the ports of
a wireless modem

1. Power supply
2. USB port
3. WAN port
4. Ethernet ports
5. Security slot.

Pg. 78-b

Match the
symbols of
wireless
connection types

1. Bluetooth
2. Wi-Fi
3. Wireless router
4. Wireless adapter

Pg. 79

Read the text:

Wireless connection

Access point: Erişim noktası

*A **hotspot** is a physical location where people may obtain Internet access, typically using Wi-Fi technology, via a wireless local area network (WLAN) using a router connected to an internet service provider.*

[https://en.wikipedia.org/wiki/Hotspot_\(Wi-Fi\)](https://en.wikipedia.org/wiki/Hotspot_(Wi-Fi))



Pg. 79

Answer the questions

1. What does a modem use to reach the computer?
 2. What is Bluetooth used for?
 3. How do gadgets with Bluetooth send or receive data?
 4. What is a hotspot?
1. A modem uses cables to connect to the computer.
 2. Bluetooth is used for connecting over short distances.
 3. Gadgets with Bluetooth have built-in radio antennas that is used to send and receive data.
 4. A hotspot is an invisible cloud of wireless connectivity.

Pg. 80-a

Decide whether the following sentences are true or false

1. True
2. False
3. False
(As there is no explanation of a limitation in the text)
4. True
5. False
6. False
7. True
8. False

Pg.80-b, 81-a

Write the names
of the items of the
following network

1. Cable modem
2. Wired router
3. Network switch
4. Wireless access point
5. PDA
6. Wireless Laptop
7. Wired PC
8. Wireless PC