

KLA-318 Hellenistik ve Roma  
Dönemi Seramiği  
12. Hafta



Doğu Sigillataları

# Dođu Sigillataları A



## Bibliyografya

- Coldstream, John, L. Eiring and G. Forster. 2001. *Knossos Pottery Handbook. Greek and Roman* British School at Athens Studies 7. London.
- Hayes, John. 1985. “Sigillate Orientali” in *Enciclopedia dell'arte antica classica e orientale. Atlante delle Forme Ceramiche II, Ceramica Fine Romana nel Bacino Mediterraneo (Tardo Ellenismo e Primo Impero)*, Rome: 1-96.
- Malamidou, Vaitsa, 2005. *Roman Pottery in Context: Fine and Coarse wares from five sites in north-eastern Greece* British Archaeological Reports International Series 1386. Oxford.
- Slane, Kathleen. 1997. “The fine wares” in Sharon Herbert (ed.), *Tel Anafa II,i*, Ann Arbor: 247-416.



KLA-318 Hellenistik ve Roma Dönemi Seramiği  
Prof. Dr. Kutalmış Gökay





KIA 318 Hellenistik ve Roma Dönemi Seramiği  
Prof. Dr. Kutalmış Gökay



KLA-318 Hellenistik ve Roma Dönemi Seramiği  
Prof. Dr. Kutalmış Görkay



KLA-318 Hellenistik ve Roma Dönemi Seramiği  
Prof. Dr. Kutalmış Gökay





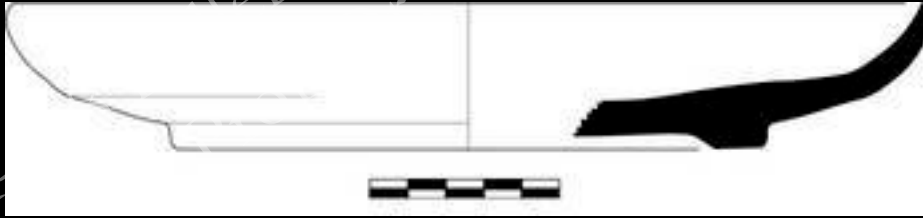
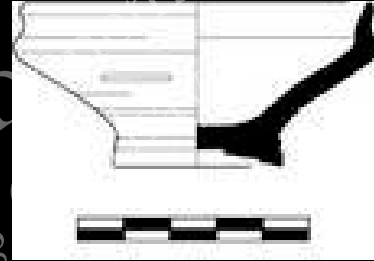
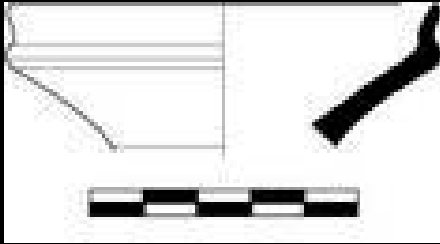




KLA-318 Hellenistik ve Roma Dönemi Seramiği  
Prof. Dr. Kutalmış Gökay



KLA-318 Hellenistik ve Roma Dönemi Seramiği  
Prof. Dr. Kutalmış Gökay



KLA  
Klasik ve Roma Dönemi Seramiği  
Kutalmış

# Dođu Sigillataları B



## Bibliyografya

- Coldstream, John, L. Eiring and G. Forster. 2001. Knossos Pottery Handbook. Greek and Roman British School at Athens Studies 7. London.
- Hayes, John. 1985. “Sigillate Orientali” in Enciclopedia dell'arte antica classica e orientale. Atlante delle Forme Ceramiche II, Ceramica Fine Romana nel Bacino Mediterraneo (Tardo Ellenismo e Primo Impero), Rome: 1-96.
- Lund, John. 2003. “Eastern Sigillata B: a ceramic fine ware industry in the political and commercial landscape of the Eastern Mediterranean” in Catherine Abadie-Reynal (ed.), Les Ceramique en Anatolie aux Epoques Hellenistique et Romaine, Paris: 125-136.
- Malamidou, Vartsa. 2005. Roman Pottery in Context: Fine and Coarse wares from five sites in north-eastern Greece British Archaeological Reports International Series 1386. Oxford.
- Wrabetz, James. 1977. “A new Serenus stamping from Sardis and the origins of the Eastern Sigillata B ware,” Harvard Studies in Classical Philology 81: 195-197.

# Doğu Sigillata B Hayes Formu 60 - Kenchreai



Doğu Sigillata B Hayes Formu 71 - Kenchreai



Doğu Sigillata B Hayes Formu 75 - Kenchreai



KLA-318 Hellenistik ve Roma Dönemi Seramiği  
Prof. Dr. İzzetalmış Görkay

# Dođu Sigillataları C



## Bibliyografya

- Carandini, Andrea and E. Tortorici. 1985. “Ceramica Microasiatica” in *Enciclopedia dell'arte antica classica e orientale. Atlante delle Forme Ceramiche I, Ceramica Fine Romana nel Bacino Mediterraneo (Medio e Tardo Impero)*, Rome: 229-235.
- Coldstream, John, L. Eiring and G. Forster. 2001. *Knossos Pottery Handbook. Greek and Roman British School at Athens Studies 7*. London.
- Hayes, John. 1972. *Late Roman Pottery*. Rome.
- Hayes, John. 1985. “Sigillate Orientali” in *Enciclopedia dell'arte antica classica e orientale. Atlante delle Forme Ceramiche II, Ceramica Fine Romana nel Bacino Mediterraneo (Tardo Ellenismo e Primo Impero)*, Rome: 1-96.
- Kenrick, Philip. 1985. *Excavation at Sidi Khrebish Benghazi (Berenice). Volume III, 1 Supplements to Libya Antiqua 5*. Tripoli.
- Loeschke, Sigfried. 1912. “Sigillata-Töpfereien in Tschandarli,” *Athenische Mitteilungen* 37: 344-407.
- Malamidou, Vaitsa. 2005. *Roman Pottery in Context: Fine and Coarse wares from five sites in north-eastern Greece* British Archaeological Reports International Series 1386. Oxford.
- Zelle, Michael. 1997. *Die Terra sigillata aus der Westtor-Nekropole in Assos* Asia Minor Studien 27. Bonn.

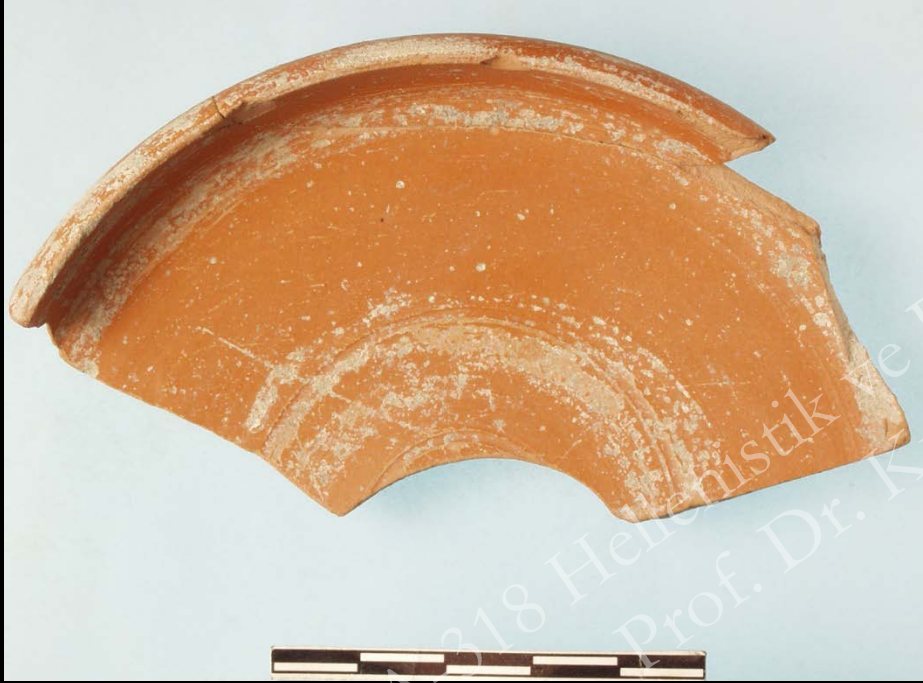
Yazıtlı Çandarlı veya ilgili kase, Cf. Loeschke Form 19 (AD 75 - 150)



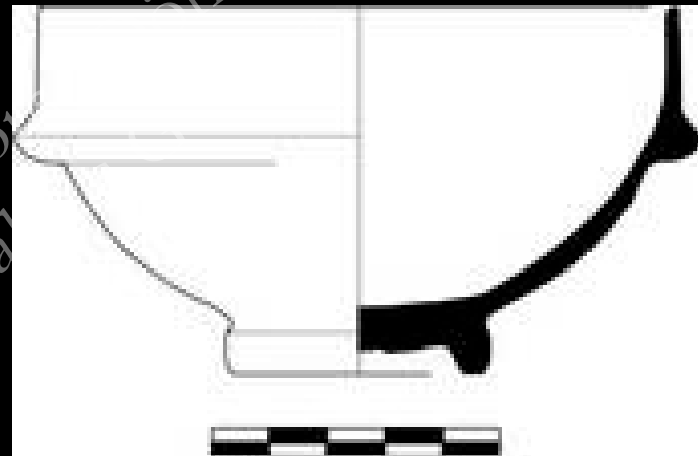
KLA 318 Hellenistik ve Roma Dönemi Seramiği  
Prof. Dr. Kutalmış Görkay



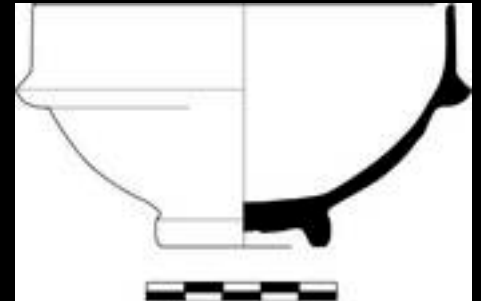
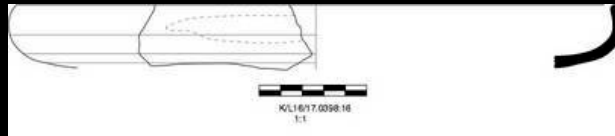
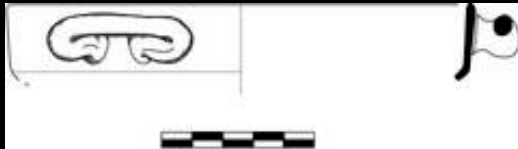
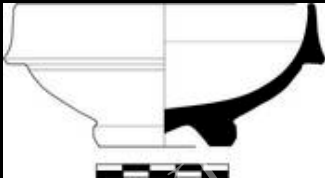
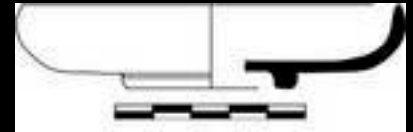
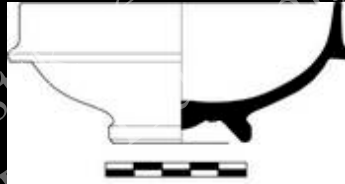
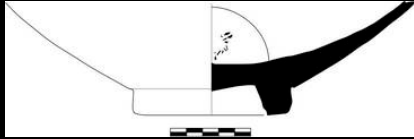
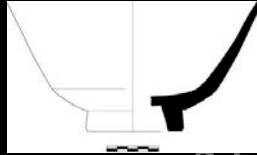
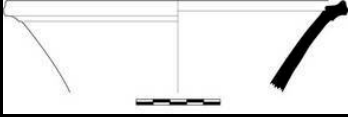
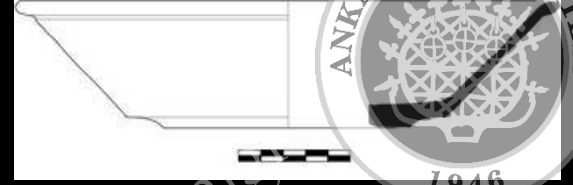
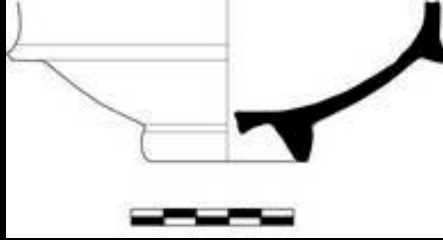
Çandarlı Loeschke Form 1 Plate Rim (AD 1-100)

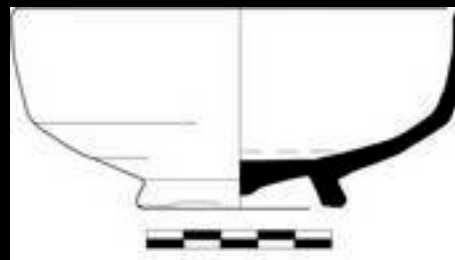
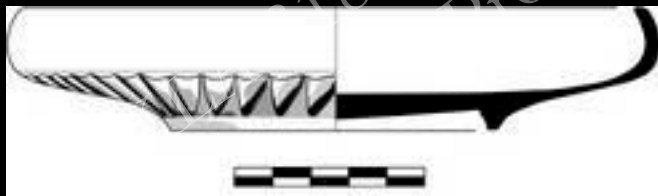
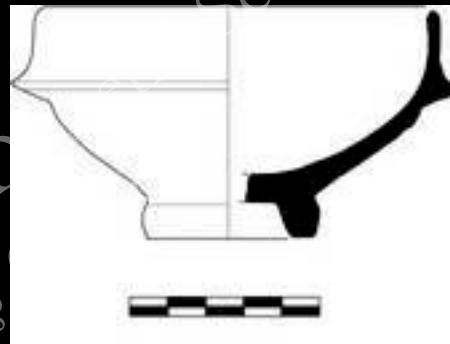
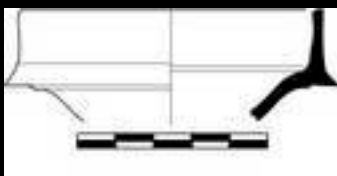


KLA 18/17-127-6  
Prof. Dr. Kutalmış Gökay  
Roma Dönemi Seramiği



KLA-310 Hellenistik ve Roma Dönemi Seramiği





18 Hellenistik ve Roma D  
Prof. Dr. Kutalmış  
Seramiği