

Oceanology 12

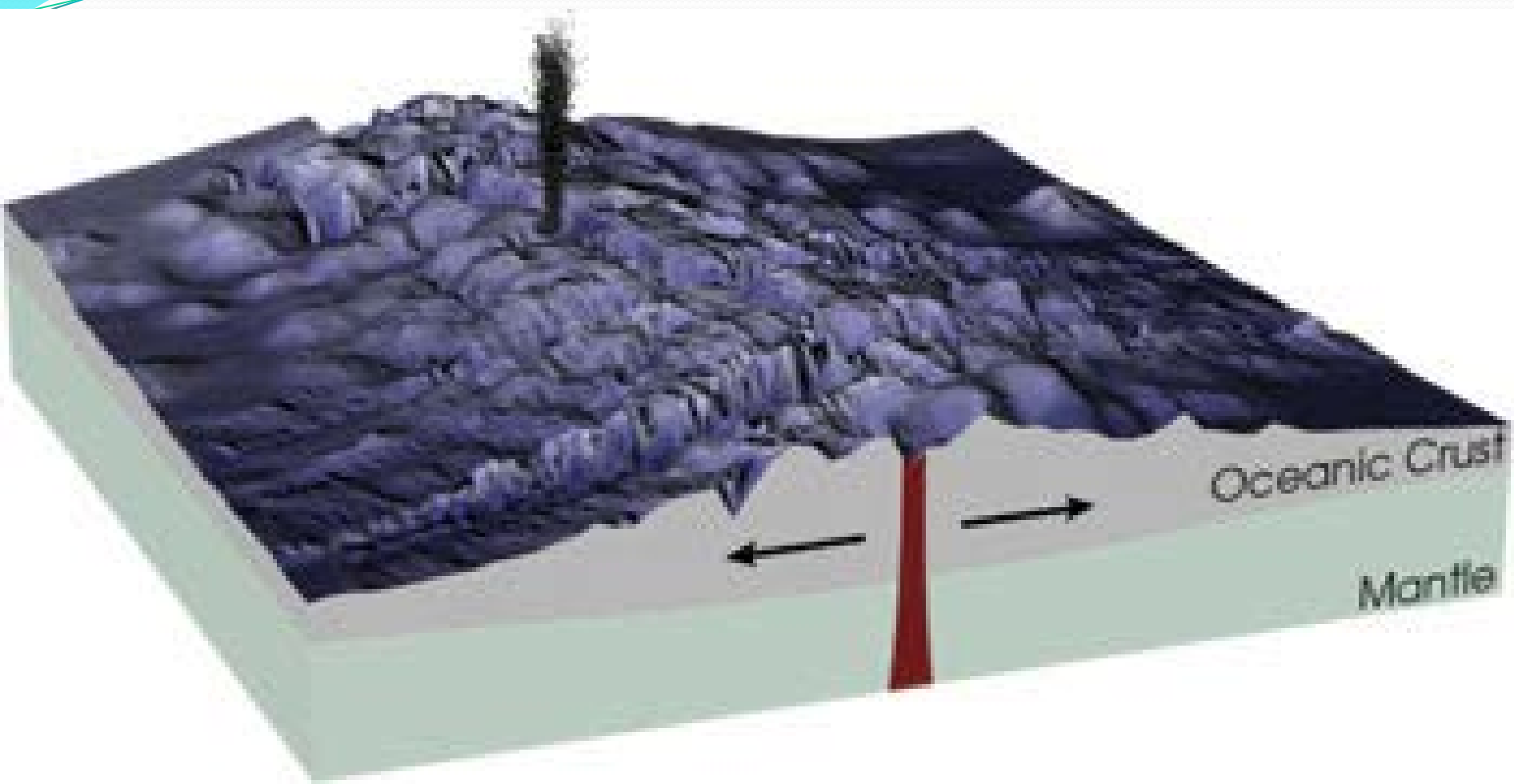
Prof. Dr. Nilsun Demir



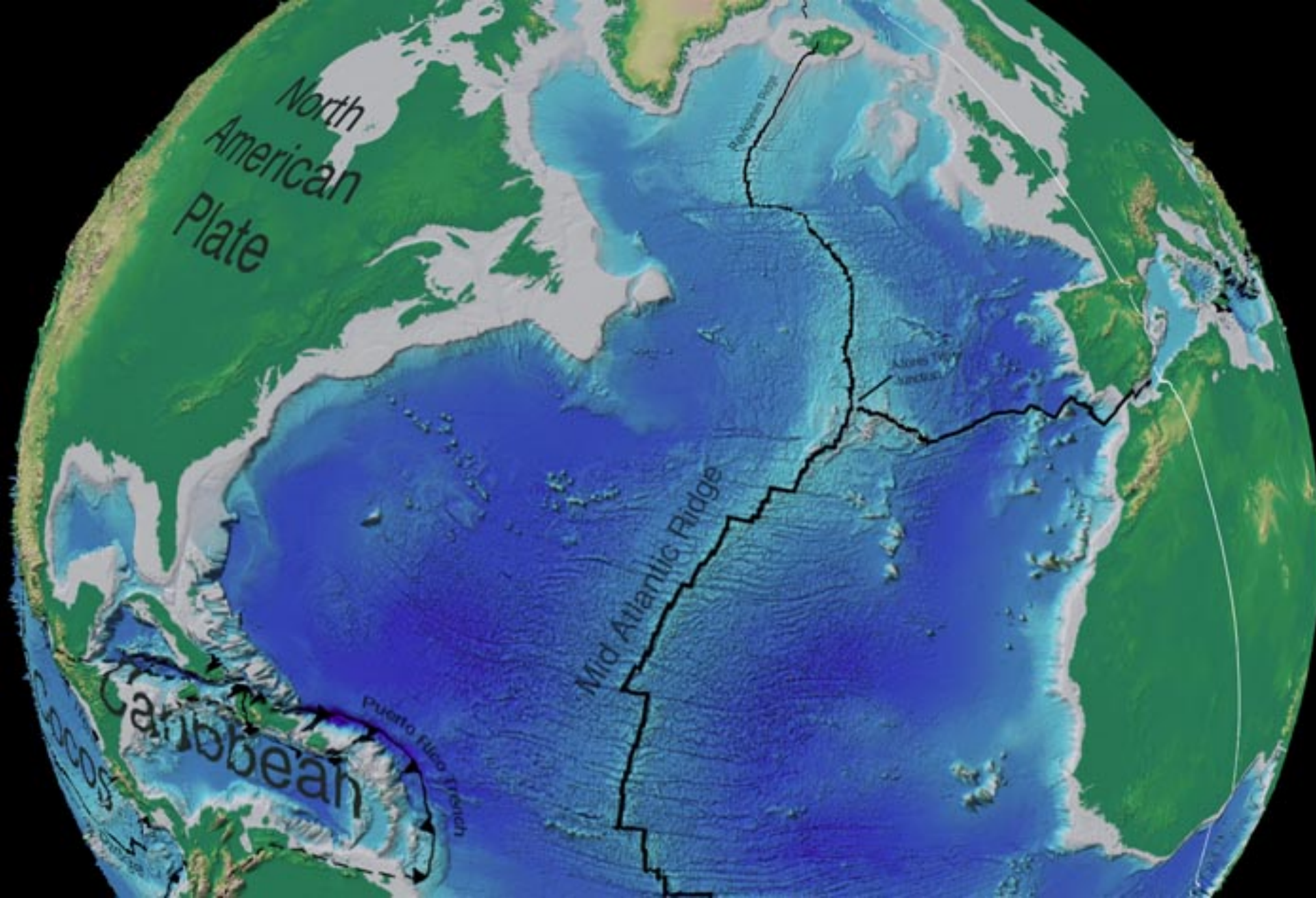
Island arcs

Mid ocean ridges

- Geologically active magma extending along the back axes and rising on the ocean floor.
- It consists of crystallized magma and basalts. The stones forming a new shell under the sea floor are the newest ones on the axis of the back.
- Hot magma is added to the edges of the plate to make a ridge in this area.
- The average height of the mid-ocean ridges is 3000 m and its width is 100-1300 m. In all the oceans they are about 65000 km long.









Atlantic ocean



Mediterranean Sea



Bay of Biscay

Black Sea

Balearic Islands

Tyrrhenian Sea

A

B

C

Ionian Sea

Levantine Sea

