

# Crustacean and Crustacean Culture

Prof. Dr. Hasan Hüseyin ATAR

# MOLLUSCS



# MOLLUSCA

AMPHINEURA

• CAUDOFOVEATA

• SOLENOGASTRES

• POLYPLACOPHORA

CEPHALOPODA

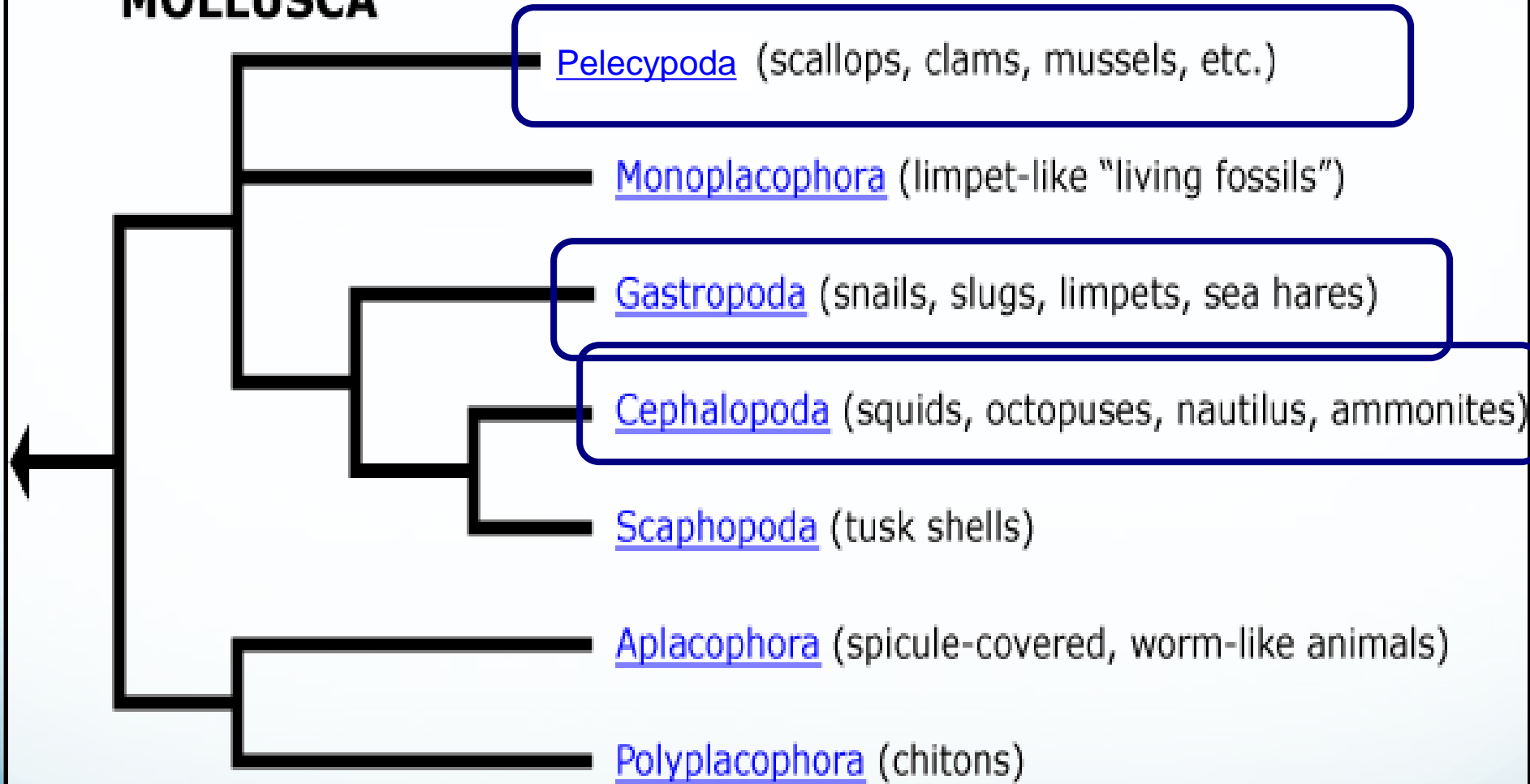
SCAPHOPODA

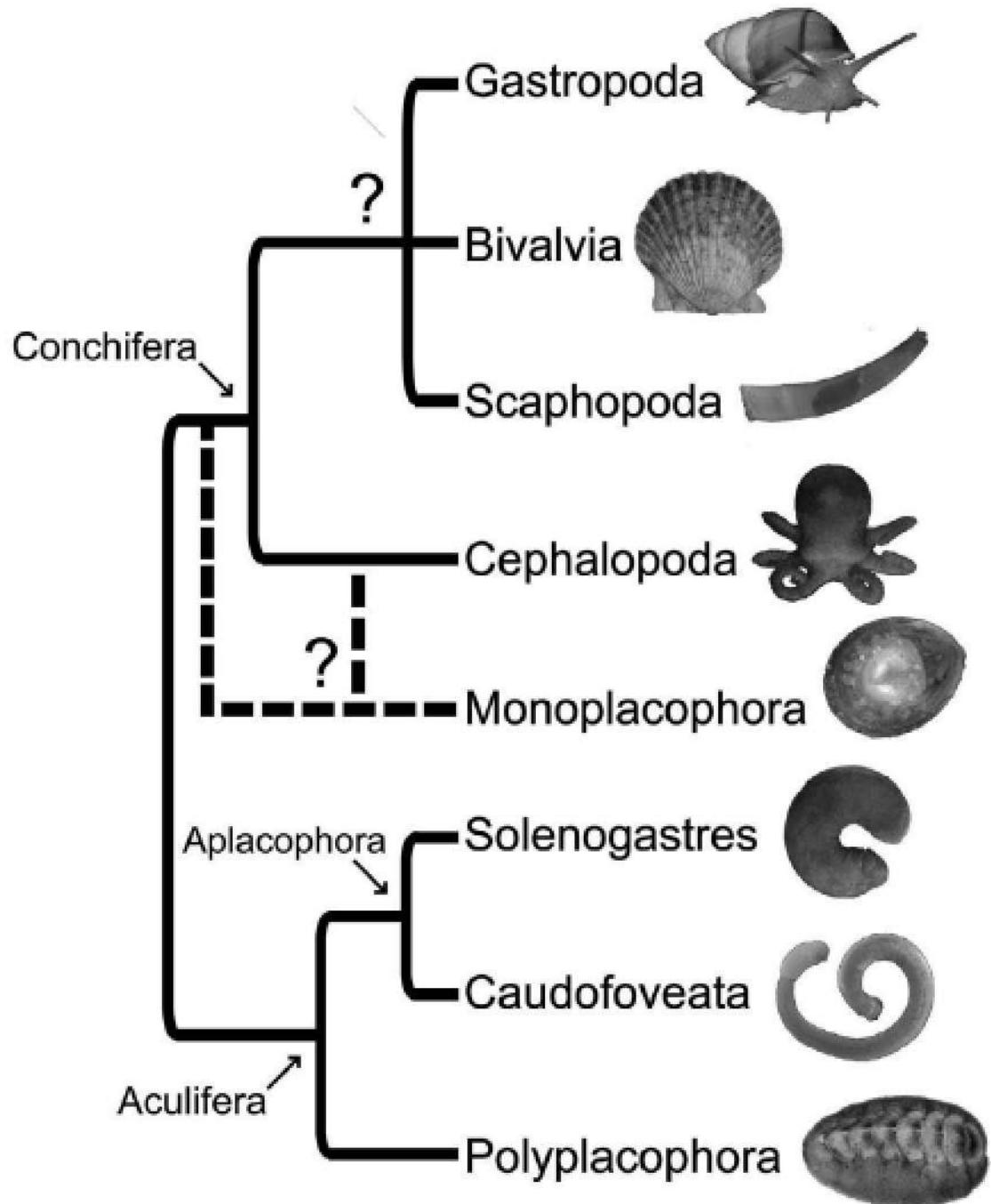
BIVALVIA

GASTROPODA

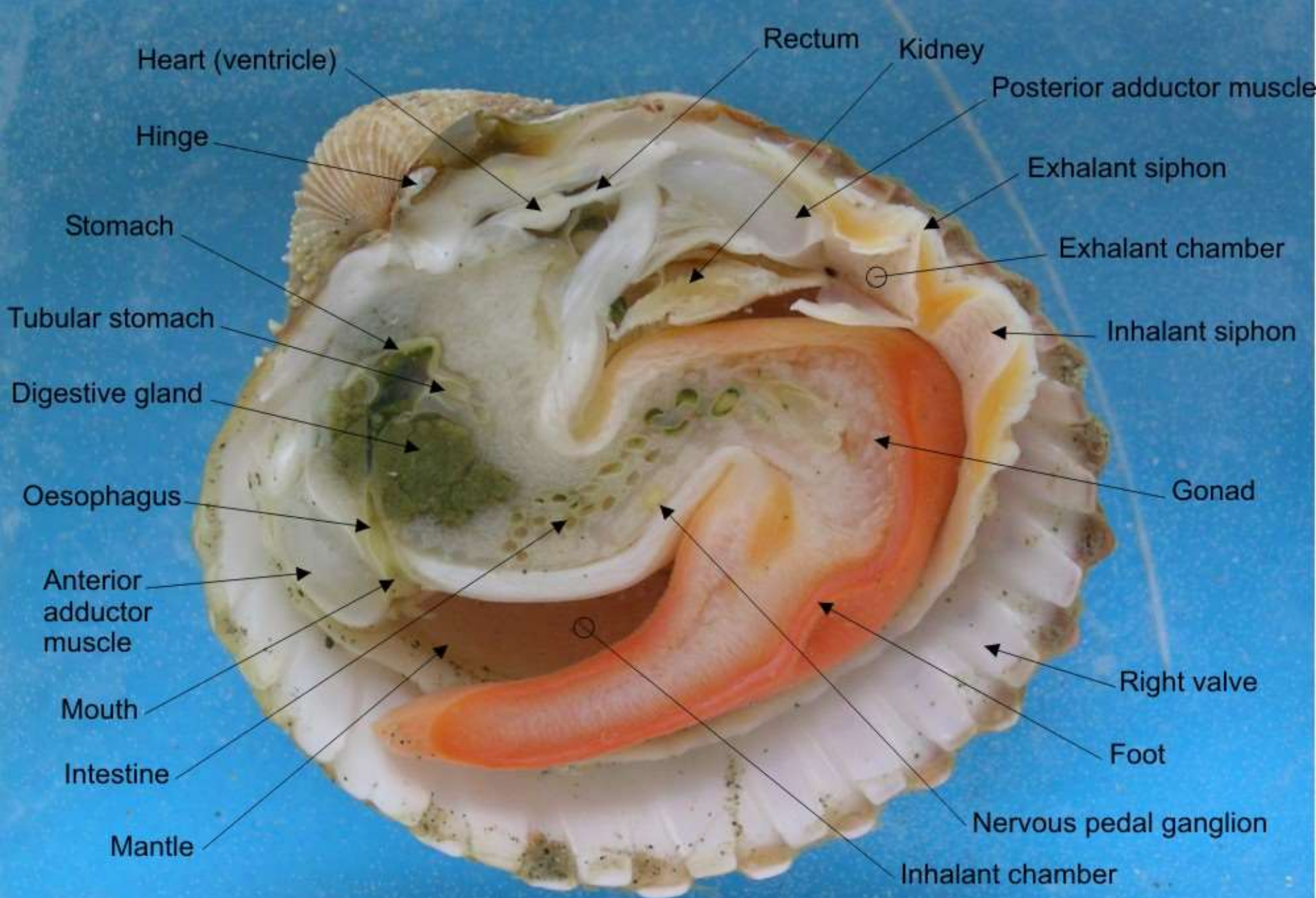
MONOPLACOPHORA

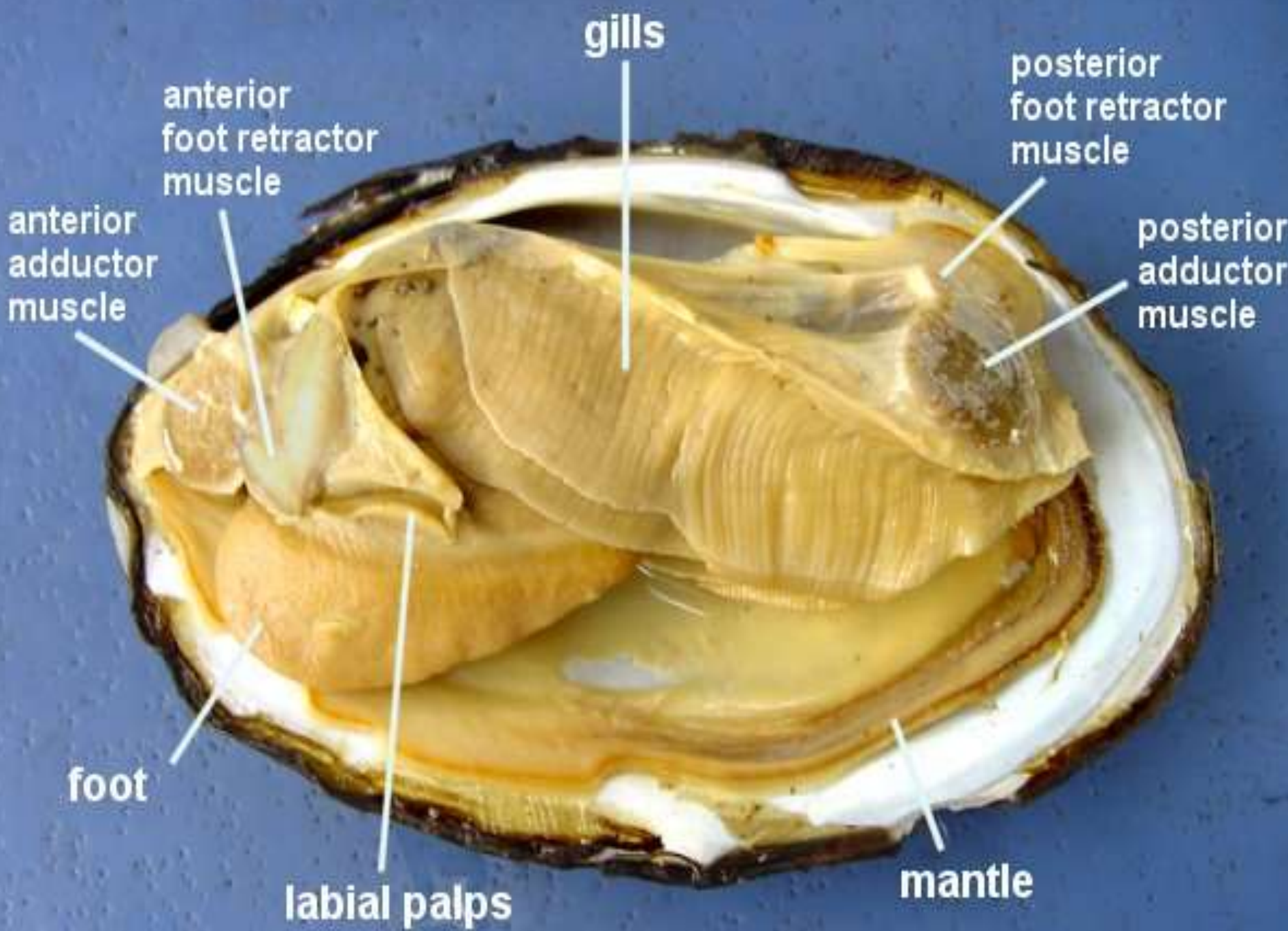
# MOLLUSCA





The phylum Mollusca is one of the largest, most diverse and important groups in the animal kingdom. There are at least 50000 described species, and about 30000 of these are found in the sea. The class Bivalvia is one of the eight classes of molluscs and comprises animals enclosed in two shell valves. Examples are mussels, oysters, scallops and clams. Although this class contains a relatively small number of species, about 10000, it elicits substantial interest chiefly because these species are widely consumed by people. In 2011, production of marine bivalves from fisheries and aquaculture was almost 14 million metric tonnes worldwide with more than 90% of this figure coming from aquaculture.





**gills**

**anterior  
foot retractor  
muscle**

**posterior  
foot retractor  
muscle**

**anterior  
adductor  
muscle**

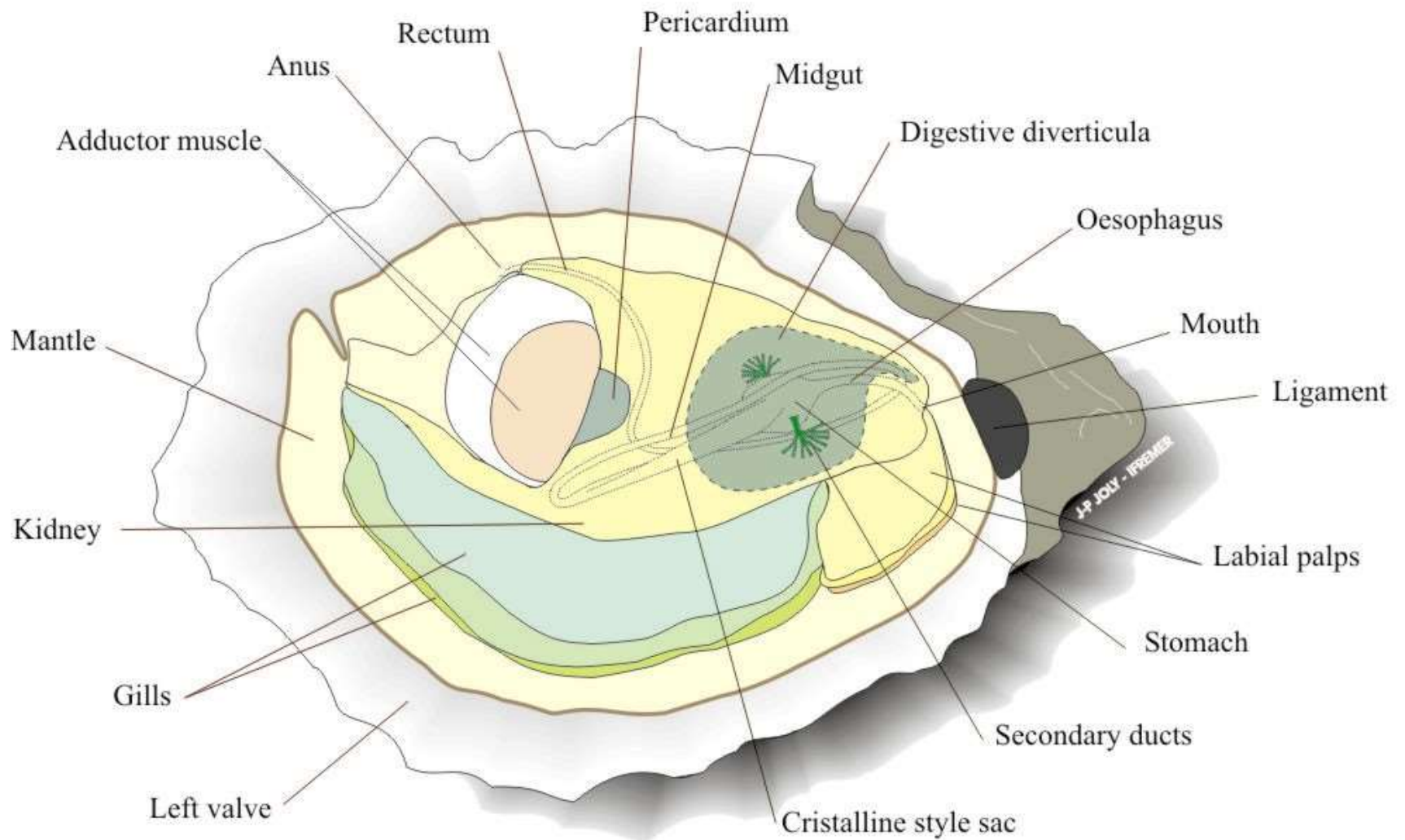
**posterior  
adductor  
muscle**

**foot**

**labial palps**

**mantle**





Anatomy of the oyster *Crassostrea gigas* after removal of the right valve

**Classis: GASTROPODA**

- Subclassis: PROSOBRANCHIA
- Subclassis: HETEROBRANCHIA
- Subclassis: OPISTHOBANCHIA
- Subclassis: DIVASIBRANCHIA
- Subclassis: GYMNMORPHA
- Subclassis: PULMONATA

