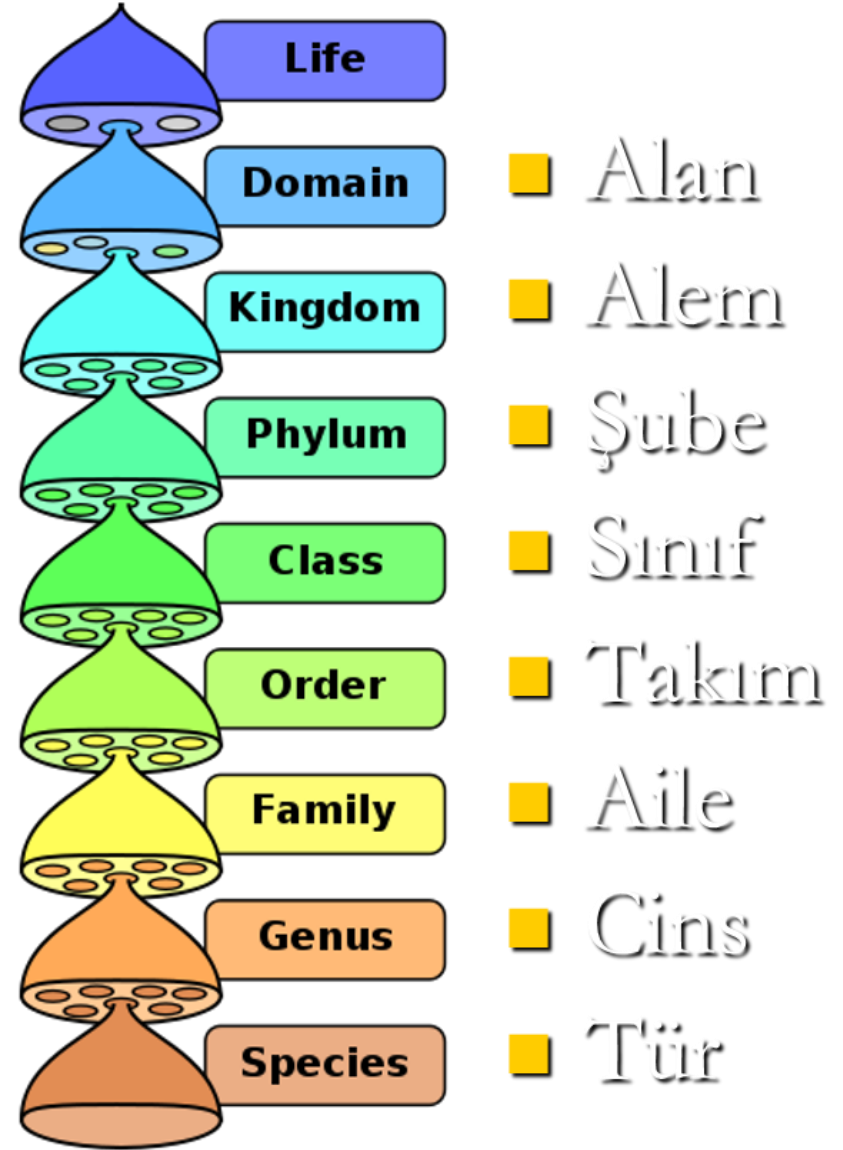
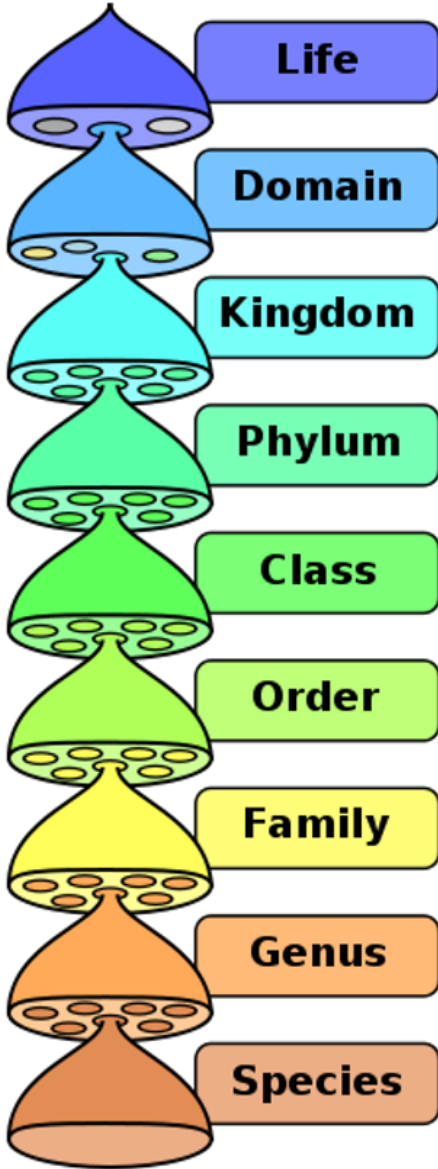


# Bakterilerin İsimlendirilmesi

# İsimlendirme





- Alan
- Alem
- Şube
- Sınıf
- Takım
- Aile
- Cins
- Tür

**Alan:** Ökarya (Eukarya)

**Alem:** Hayvanlar (Animalia)

**Şube/Filum:** Kordalılar (Chordata)

**Sınıf:** Memeliler (Mammalia)

**Takım:** Etçiller (Carnivora)

**Aile/Familya:** Kedigiller (Felidae)

**Cins:** Kedi (*Felis*)

**Tür:** Ev Kedisi (*Felis domesticus*)

# İsimplendirme (Nomenklatür)

Bilimsel sınıflandırma 2 sözcükten oluşur:

CİNS (GENUS) + TÜR (SPECIES)

*Bacillus anthracis*      *Bac. anthracis*      *B.*  
*anthracis*

*Staphylococcus aureus*      *Staph. aureus*      *S.*  
*aureus*

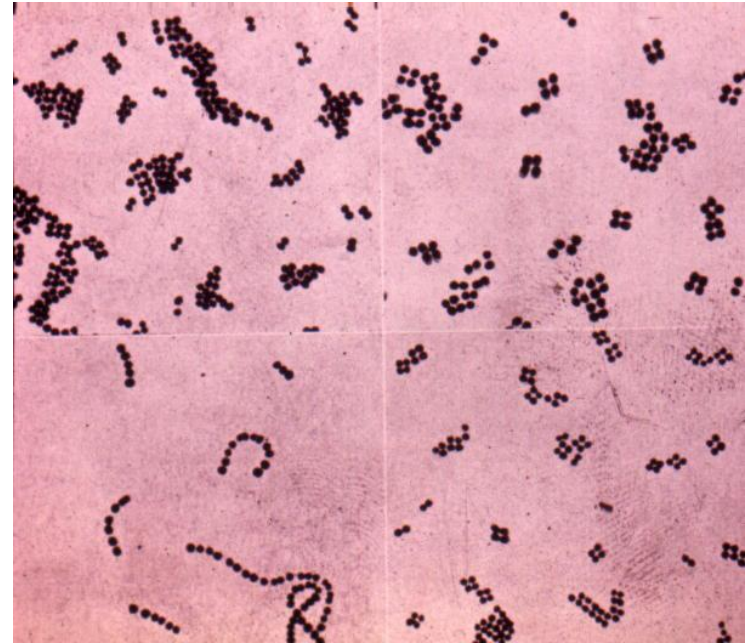
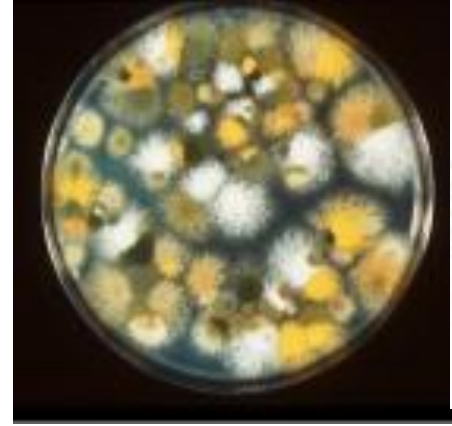
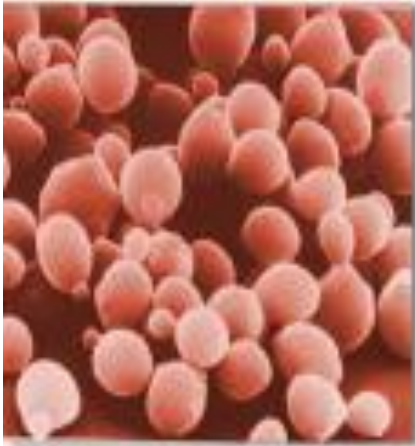
*Streptococcus pyogenes*      *Str. pyogenes*      *S.*  
*pyogenes*

# *Bacillus anthracis*

<b>Alem(Regnum):</b>	<b>Bacteria</b>
<b>Şube (Divisio):</b>	<b>Firmicutes</b>
<b>Sınıf(Classio):</b>	<b>Bacilli</b>
<b>Takım(Order):</b>	<b>Bacillales</b>
<b>Familya(Familia):</b>	<b>Bacillaceae</b>
<b>Cins(Genus):</b>	<i>Bacillus</i>
<b>Tür(Species):</b>	<i>Bacillus anthracis</i>

# *Escherichia coli*

<b>Alem(Regnum):</b>	<b>Eubacteria</b>
<b>Şube (Divisio):</b>	<b>Proteobacteria</b>
<b>Sınıf(Classio):</b>	<b>Gamma Proteobacteria</b>
<b>Takım(Order):</b>	<b>Enterobacteriales</b>
<b>Familya(Familia):</b>	<b>Enterobacteriaceae</b>
<b>Cins(Genus):</b>	<i>Escherichia</i>
<b>Tür(Species):</b>	<i>Escherichia coli</i>



# Bakterilerin Morfolojisi

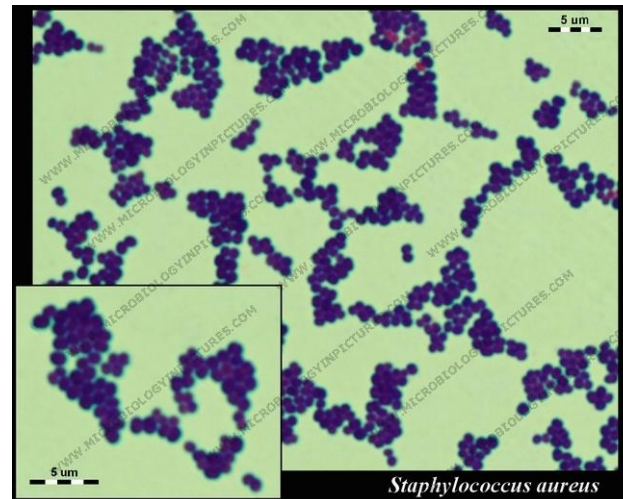
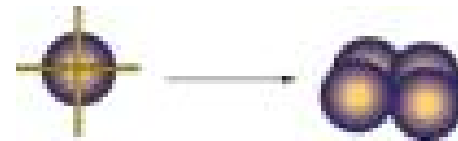
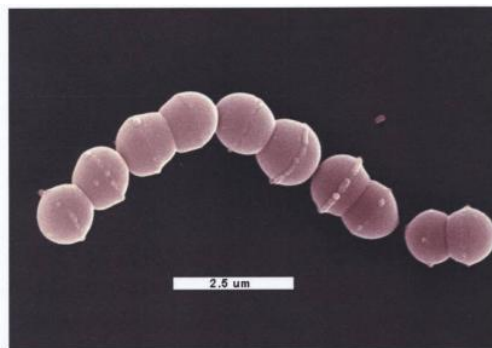
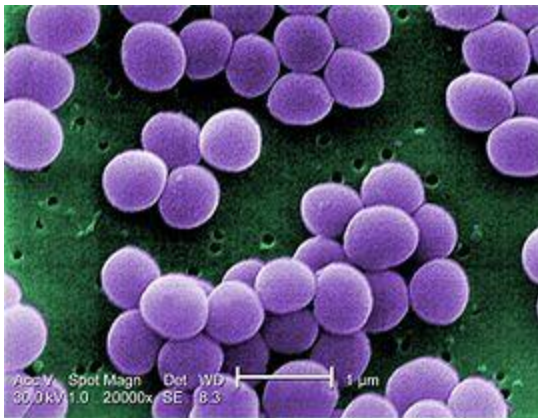


# Bakterilerin Morfolojisi

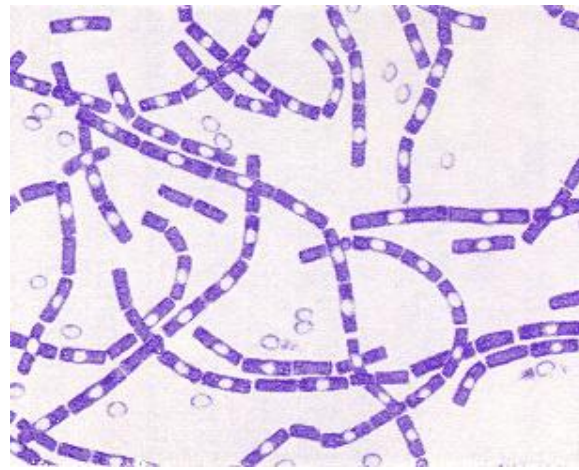
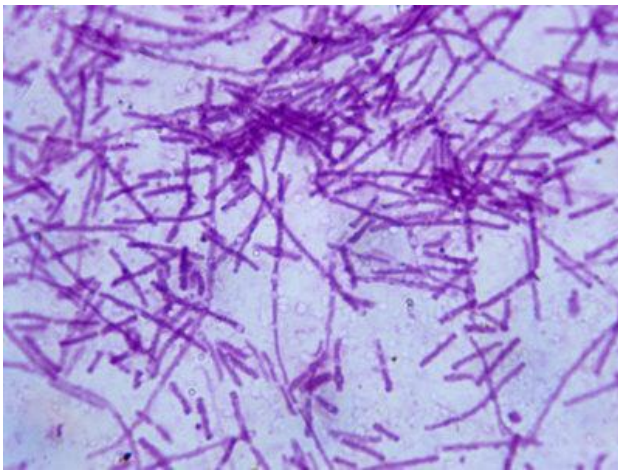
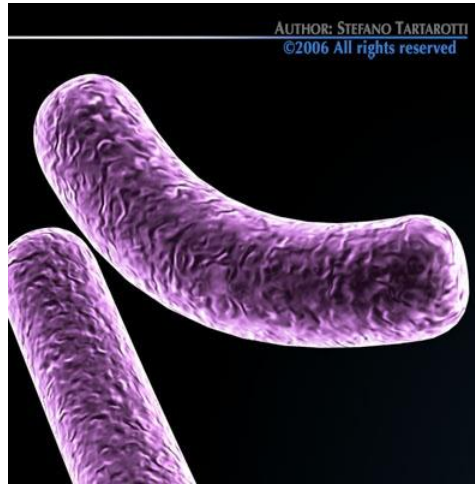
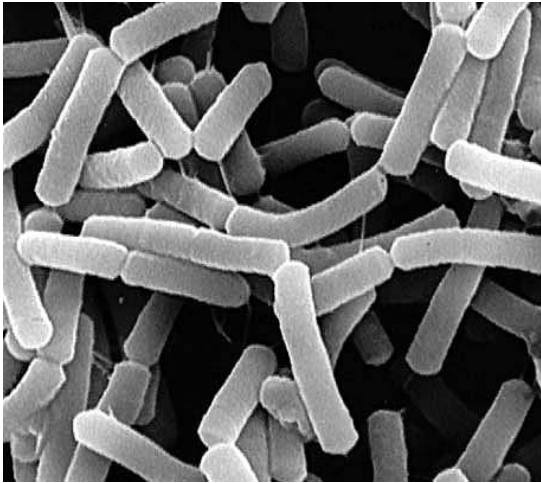
- **Bireysel Morfoloji (Mikroskopik)**
  - Kok *Staphylococcus* spp.
  - Çomak *Bacillus* spp.
  - Sarmal *Leptospira* spp.
  - Pleomorfik: L- Formları, PPLO, İnvölüsyon Formları *Mycoplasma* spp.
- **Koloni Morfolojisi (Makroskopik)**  
**S, R, M**

# Bireysel Morfoloji (Mikroskopik)

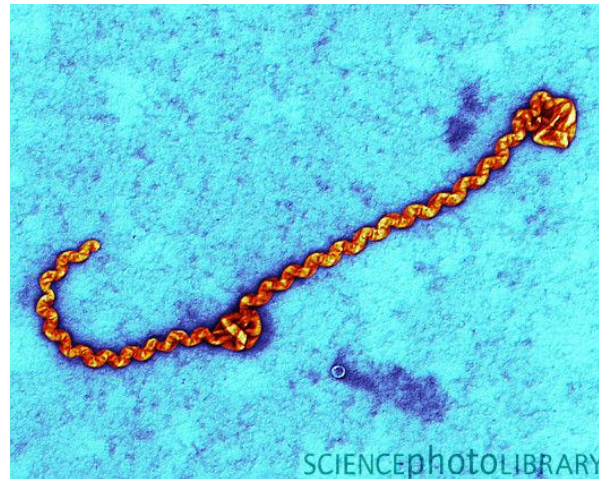
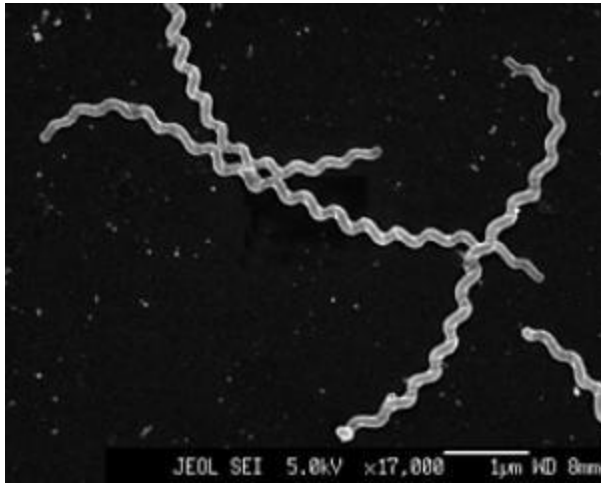
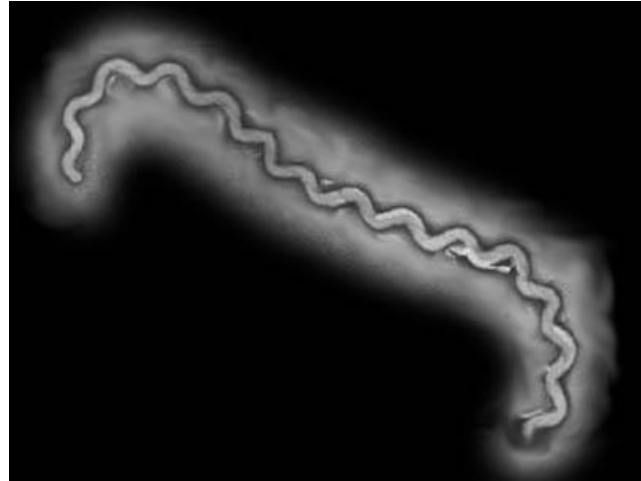
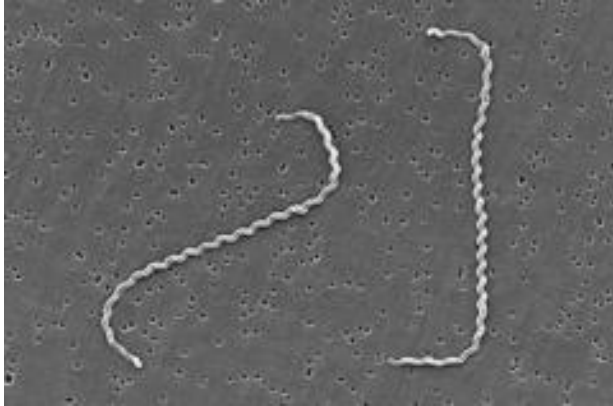
## Kok (*Staphylococcus* spp.)



Çomak (*Bacillus* spp.)

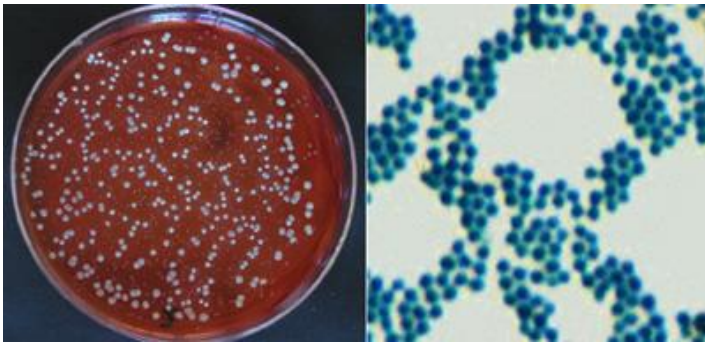


Sarmal (*Leptospira* spp.)

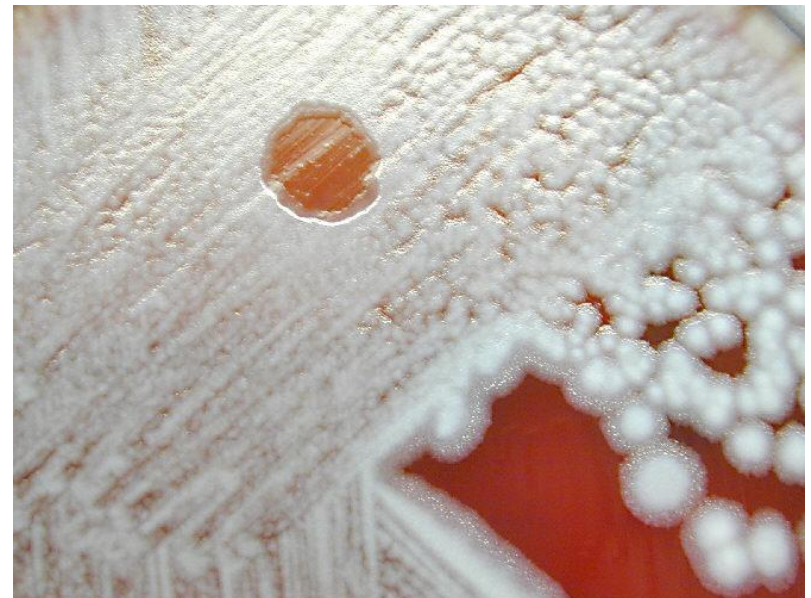
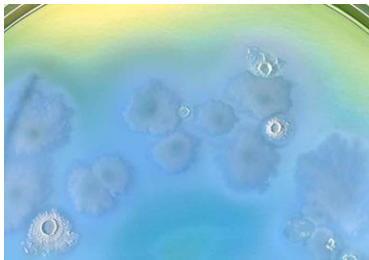
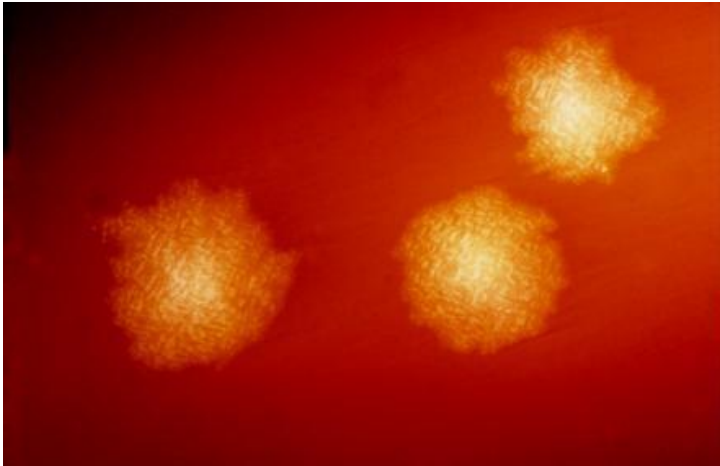


# Koloni Morfolojisi (Makroskopik)

S-tipli koloni morfolojisi (Staphylococcus spp.)



# R-tipli koloni morfolojisi (*Bacillus anthracis*)



# M-tipli koloni morfolojisi (Klebsiella spp.)

