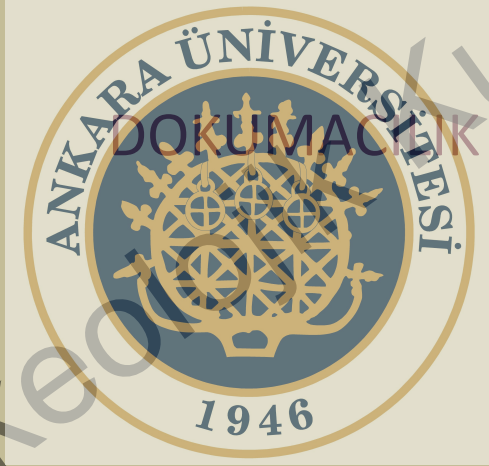


KLA 222 Arkeolojik Buluntu



# Dokumacılıkta kullanılan ip kaynakları

## Hayvansal Kaynaklar



Yün



## Bitkisel Kaynaklar



Pamuk



İpek



Keten



Yele kılı



Kenevir



Amasis Ressamı, Lekyθος, M.Ö. ca. 550–530



KLA 222

Yücel Buluntu



KLA 222 Arkeoloji ve Etnoloji Buluntu

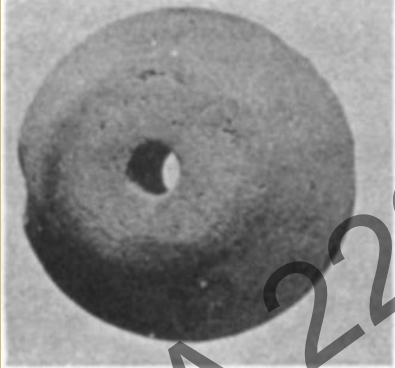
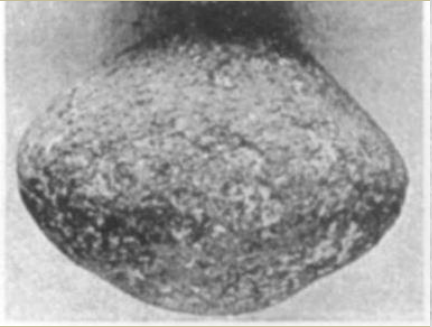




KLA 222

wiki How to Spin with | D

Kirmen Ağırşağı (spindle whorl)



1218



1219



KLA 222 Arkeo

Buluntu



**Clay spindle whorls, dedications of women to the Sanctuary of Nymphe  
6th and 5th cent. BC.**







KLA 222

Arkeoloji

Yüksek Lisans

Uluntu

# Kirmen Kancası (spindle hook)

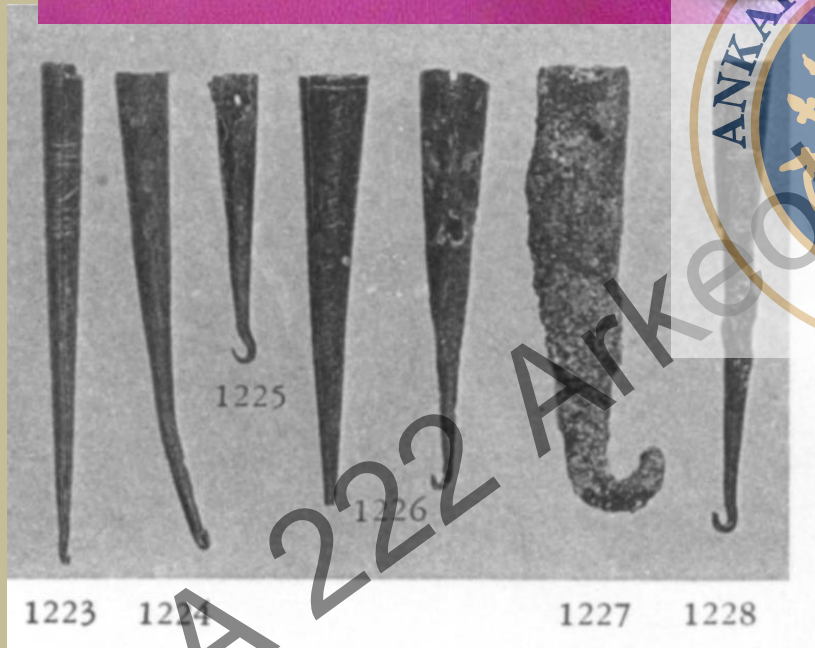
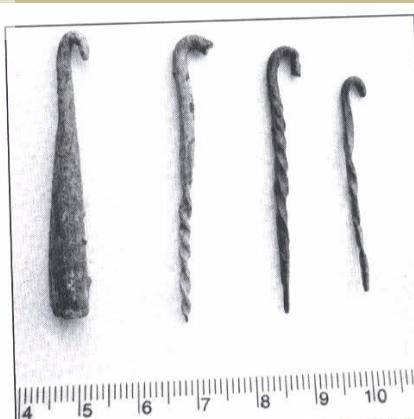


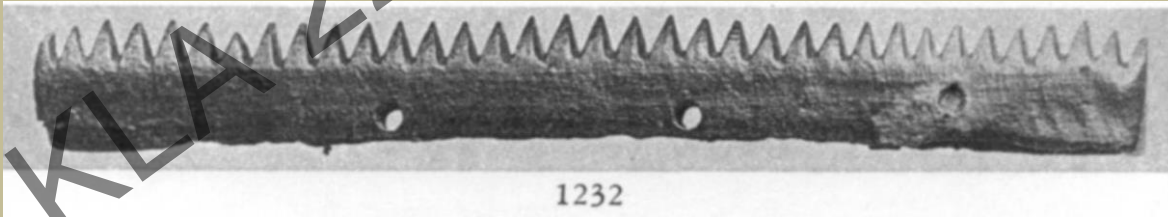
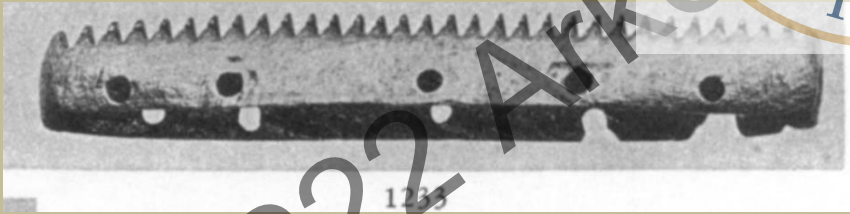
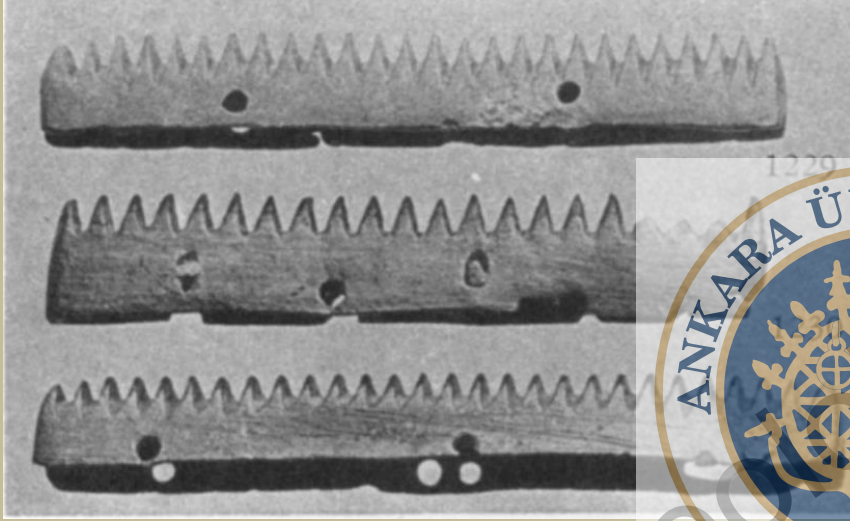
Fig. 14.7. Magdalensberg, spindle-hooks: copper alloys (© K. Gostenčnik).



KLA 222 Arkeo

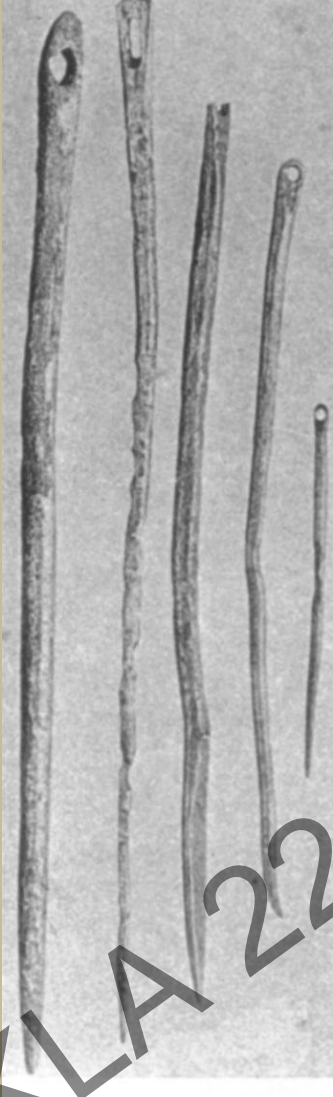
Kucuk Buluntu

Dokuma Tarađı (loom combs)



KLA 222 Arkeolojik Buluntu

İğne (Needles - Bodkins)



1253

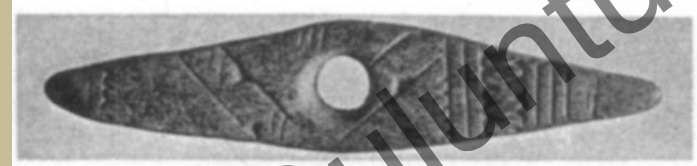
1254

1255

1256



1273



1274

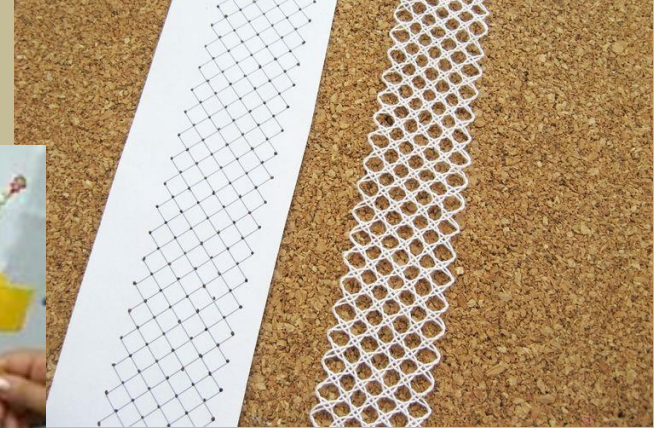
Mekik



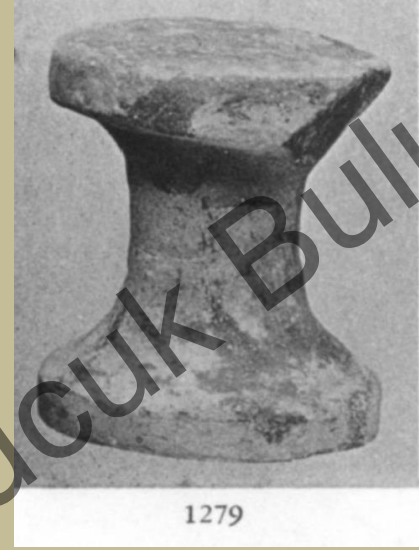
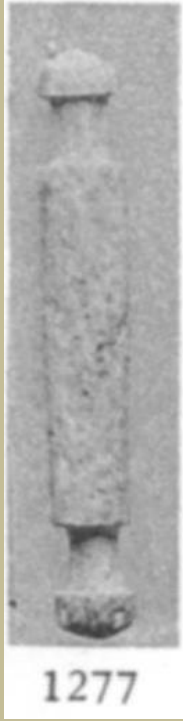
KLA 222 Arkeo

Kucuk Buluntu

# Ağ Bobini (Netting Bobbins)



MAKARALAR



KLA 222

Arkeoloji

Küçük Buluntu

YÜKSÜK (thimble)



KLAK 222 Arkeolojik Buluntu





KLA 222 KÜLTÜR VE İZLENİMİ  
Uçurumculuk



KLA 222

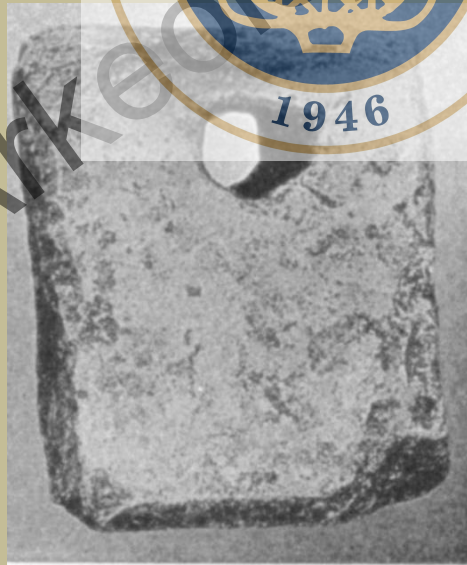
çuk Buluntu



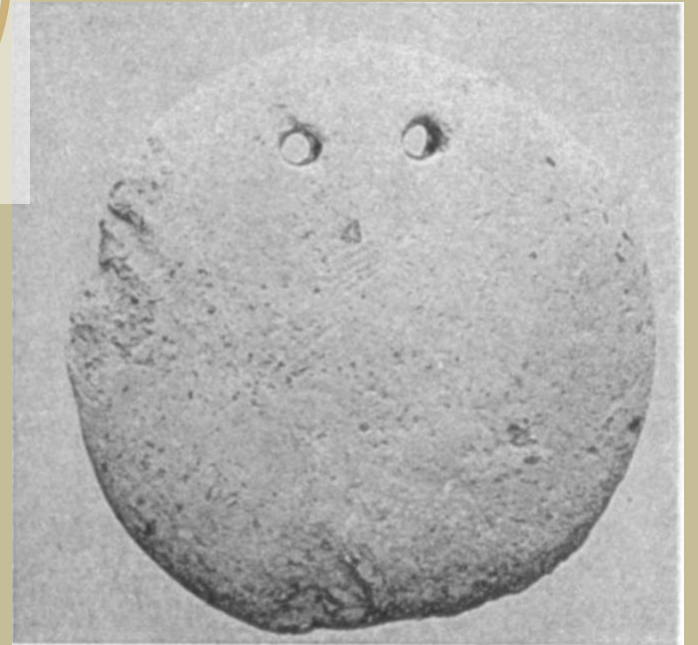
1067



1201



1211



1205



Küçük Buluntu