

Ticaretle İlgili Araç Gereçler



222 Ark

Acuk Buluntu



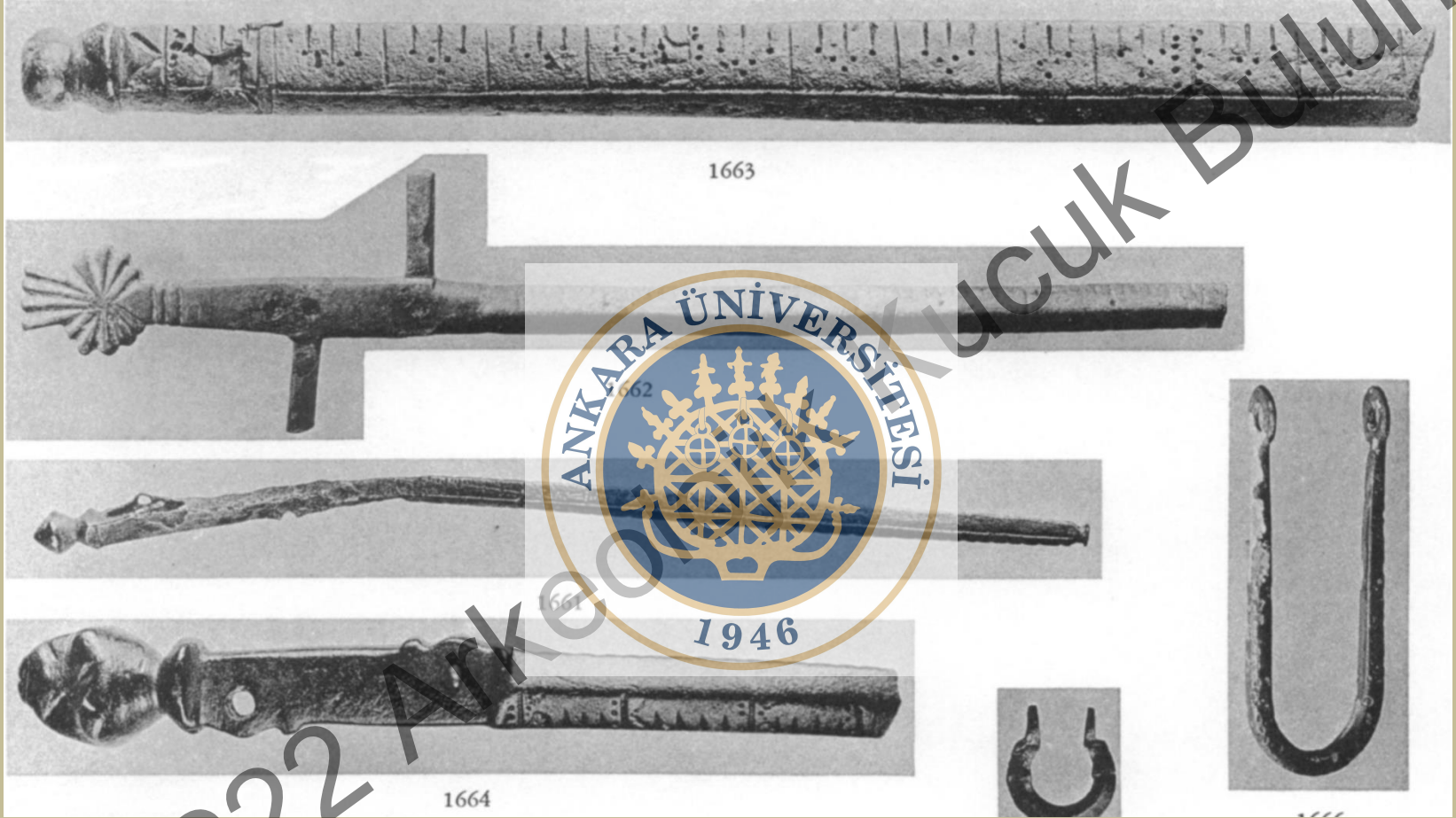
Arkeolojik Buluntu



KLA 2022 Arkeolojik Buluntu



KLA 222 Arkeolojik Buluntu



KLA 222 Ankara Küçük Buluntu

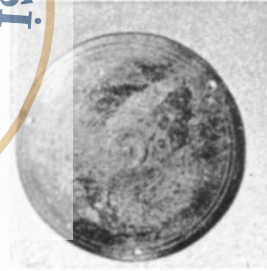
Küçük Buluntu



1676



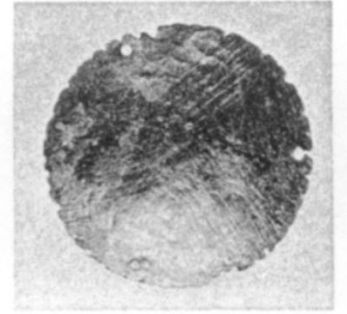
1677



1675



1668



1678



1669

YUNAN AĞIRLIK ÖLÇÜLERİ

TEMEL ÜÇ AĞIRLIK ÖLÇÜSÜNÜN BİRBİRİNE ORANLARI

AEGINA: EUBOIA veya ESKİ ATTİK	8:5
AEGINA: SOLONIAN veya GEÇ ATTİK	5:3
EUBOIA: SOLONIAN	1388/9 : 100
veya	100 : 72
veya	25 : 18

AEGINA TALENTİ = 6000 AEGINA DRAKHMİSİ = 7200 EUBOIA DRAKHMİSİ = 10000 SOLONIAN DRAKHMİSİ

EUBOIA TALENTİ = 5000 AEGINA DRAKHMİSİ = 6000 EUBOIA DRAKHMİSİ = 8333 1/3 SOLONIAN DRAKHMİSİ

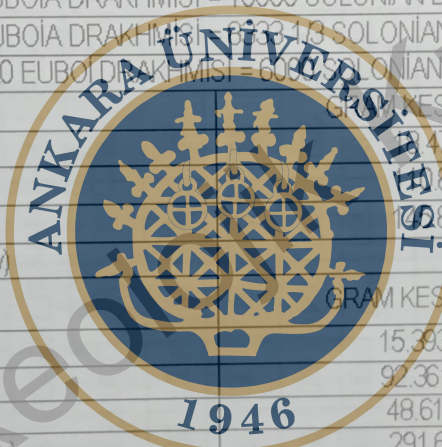
SOLONIAN TALENTİ = 3600 AEGINA DRAKHMİSİ = 43320 EUBOIA DRAKHMİSİ = 60000 SOLONIAN DRAKHMİSİ

AEGINA AĞIRLIKLARI

OBOL (Οβολός)				GRAM YAKLAŞIK OLARAK
6	DRAKHME (Δραχμή)			20
600	100	MINA (Μνά)		
36000	6000	60	TALENT (Τάλαντον)	

EUBOIA veya ATTİKA TİCARİ AĞIRLIKLARI				GRAM KESİN OLARAK	GRAM YAKLAŞIK OLARAK
OBOL (Οβολός)				15.393 14/27	15 1/2
6	DRAKHME (Δραχμή)			92.361 1 1/9	93 1/3
600	100	MINA (Μνά)		48.61 1 1/9	
36000	6000	60	TALENT (Τάλαντον)	291.61 1/3	

ATTİKA TİCARİ AĞIRLIKLARI (ARTTIRILMIŞ)				GRAM KESİN OLARAK
1 MINA = 150 DRAKHMİ (GÜMÜŞ)				350
5 MINA = 6 MINA (TİCARİ)				291.6 2/3
1 TALENT = 65 MINA (TİCARİ)				145.8 1/3
ATTİKA GÜMÜŞ AĞIRLIKLARI				GRAM KESİN OLARAK
OBOL (Οβολός)				11.0833 1/3
6	DRAKHME (Δραχμή)			66.5
600	100	MINA (Μνά)		87.5
36000	6000	60	TALENT (Τάλαντον)	



KLA 222

Çuk Buluntu

ROMA AĞIRLIKLARI

UNCIA TEMELLİ AĞIRLIK ÖLÇÜLERİ

UNCIA

1	SESCUNCIA veya SESCUNX										
1/2	SEXTANS										
2	1	SEXTANS									
1/3	2	QUADRANS veya TERUNCIUS									
3	2	1	QUADRANS veya TERUNCIUS								
1/2	2	2	1	TRIENS							
1/3	2	2	1	TRIENS							
4	2	2	1	1	QUINCUNX						
1/3	2	1	1/4	QUINCUNX							
5	3	2	1	1	SEXTIS veya SEMISSIS						
1/3	2	1/2	2/3	1/4	SEXTIS veya SEMISSIS						
6	4	3	2	1	SEPTUNX						
1/3	2	1/2	1/3	3/4	2/5	SEPTUNX					
7	4	3	2	1	1	1	BES veya BESSIS				
1/3	2	1/2	1/3	3/4	2/5	1/6	BES veya BESSIS				
8	5	4	2	2	1	1	1	DODRANS			
1/3	4	2/3	2	3/5	1/3	1/7	DODRANS				
9	6	4	3	2	1	1	1	1	DEXTANS		
1/2	3	1/4	4/5	1/2	2/7	1/8	DEXTANS				
10	6	5	3	2	1	1	1	1	1	DEUNX	
1/3	5	1/3	1/2	2	2/3	3/7	1/4	1/9	DEUNX		
11	7	5	3	2	1	1	1	1	1	1	
1/3	5	1/2	2/3	3/4	1/5	5/6	4/7	3/8	2/9	1/10	
12	8	6	4	3	2	2	1	1	1	1	
	8	6	4	3	2	2	5/7	1/2	1/3	1 1/5	
										1 1/11	
										AS veya LIBRA	

KLA 222 Ankara 222 Ankara Bulunttu

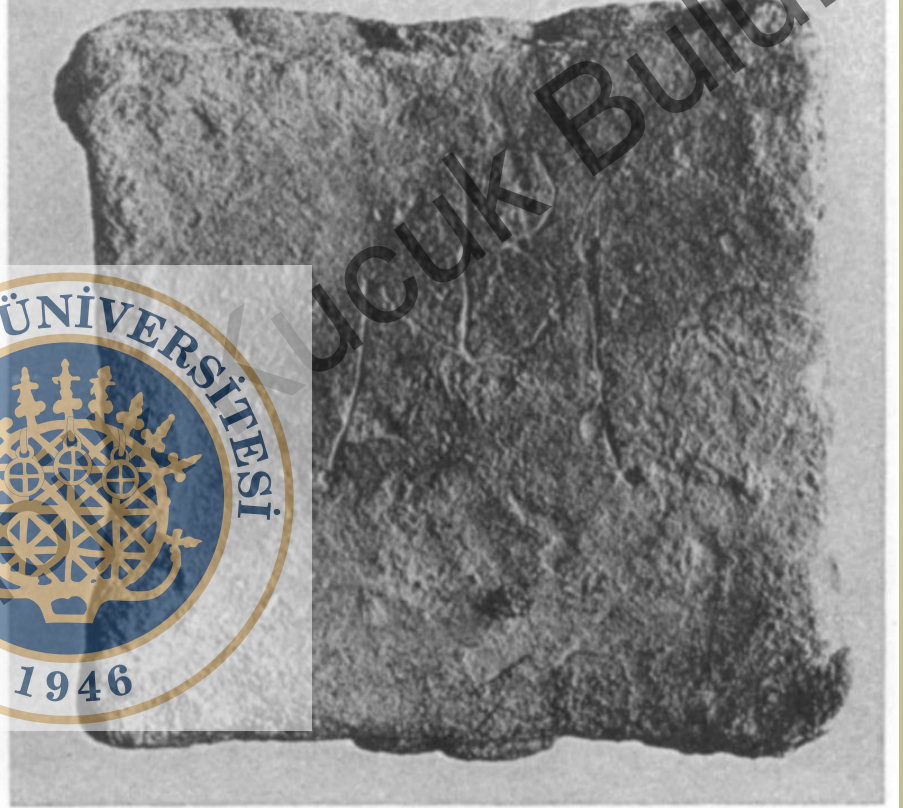


KLİN 2022 Arkeo

Arkeo Küçük Buluntu



1580



1581



KLA 222 Arkeo

Küçük Buluntu

KLA 222 Arkeoloji Küçük Buluntu

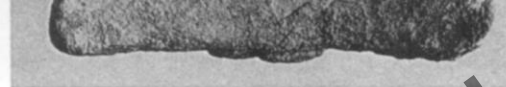




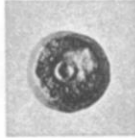
1582



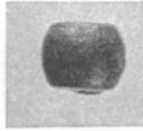
1580



1581



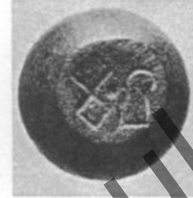
1583



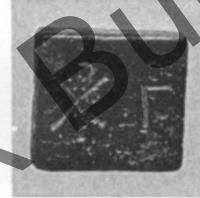
1584



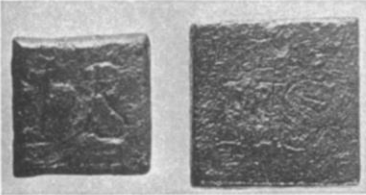
1585



1586

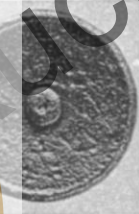


1587

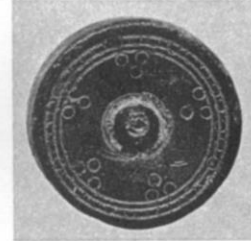


1588

1592



1595

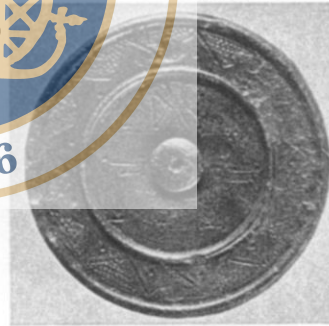


1598



1597

1599



1600



1605



1606



1607

1608

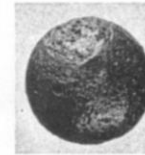


1609

1610



1611

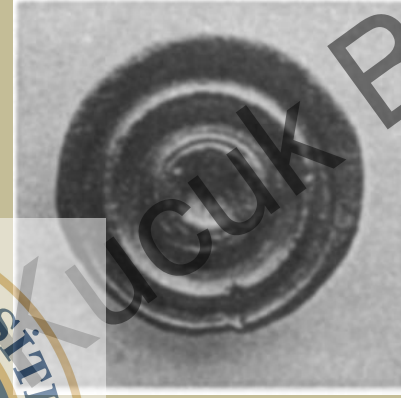


1612

KLA 222 Arkeo... Buluntu



1602



1623

1624

1625



KLA 222 Arkeo Küçük Buluntu

1646

1647

1649



1654

1652



KLA 222 Ankara Küçük Buluntu

KLA 222 Arkeo... Buluntu





ACLODIVS AT FLACCVS NARCAE
DAVID MENS VRAS EX AFO

KLA 222 Arkeo...
Kucuk Buluntu



ACIODIVSAI FLACCVS NAR
DVLD MENSVRASEXAEQVANDASEDEGRO

KLA 222 Arkeolojik Buluntu



© LESSING ARCHIVE ©

© LESSING ARCHIVE ©



1449



© LESSING ARCHIVE ©

© LESSING ARCHIVE ©

© LESSING ARCHIVE ©