



# P. Emilio Botta Ninive / Kuyuncuk

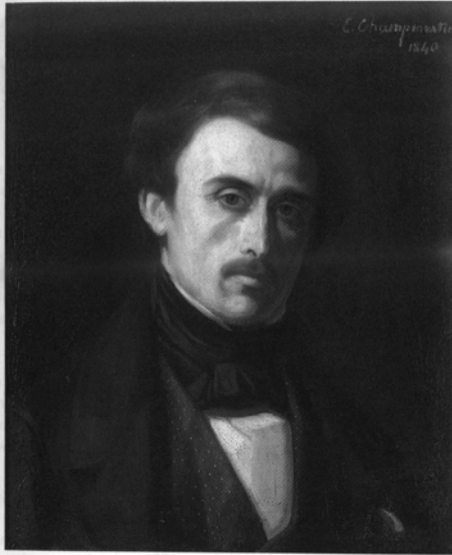
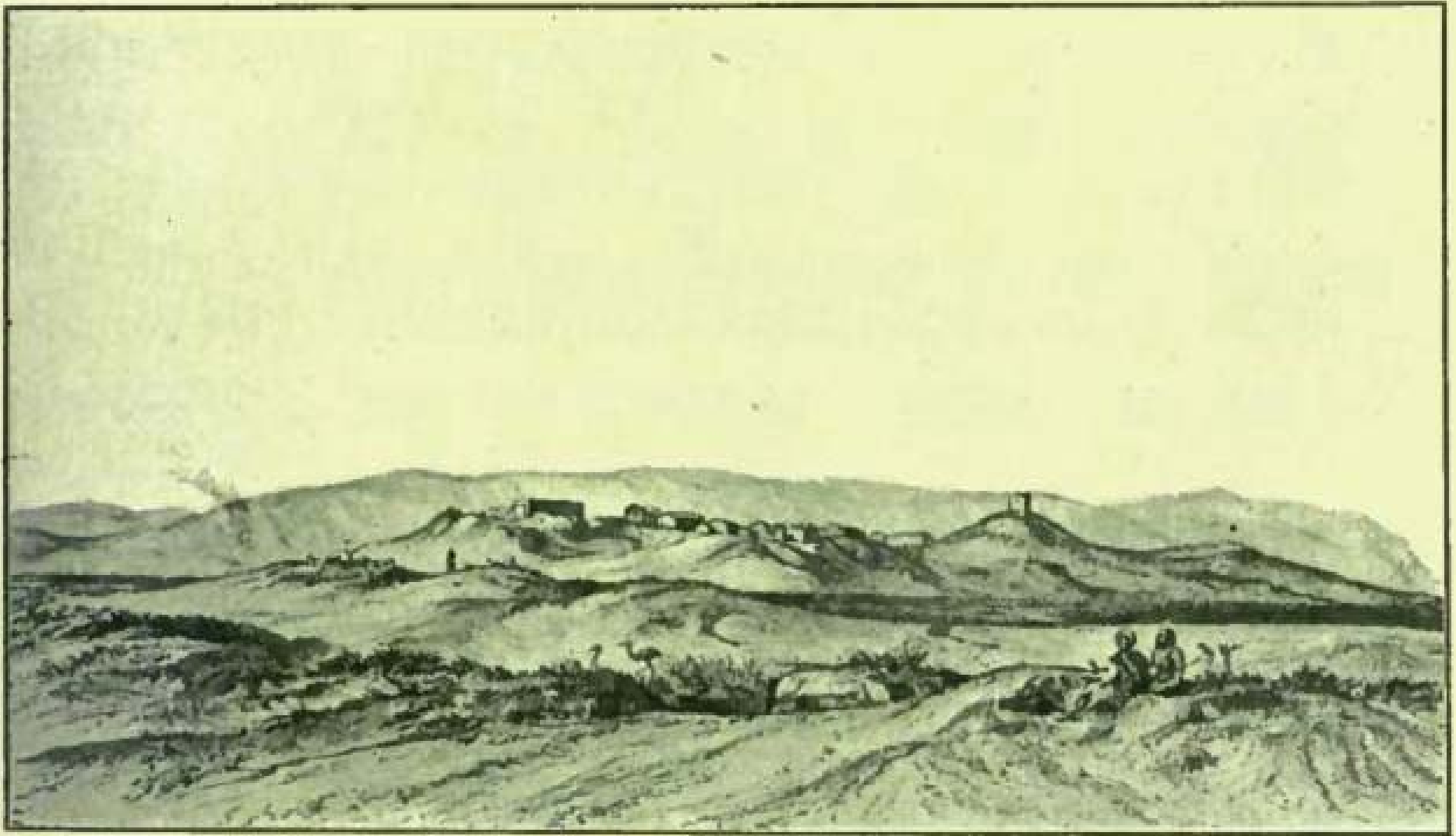


Figure 2.1 C.-E. Champmartin's painting of Paolo Emilio Botta, from 1840 which shows him shortly before he left for Mosul. As far as I know, this is the only portrait of Botta, and it now hangs in the office of Dr Annie Caubet who is in charge of the department of ancient Near Eastern archaeology at the Louvre. Reproduced by courtesy of the Musée du Louvre, Paris.

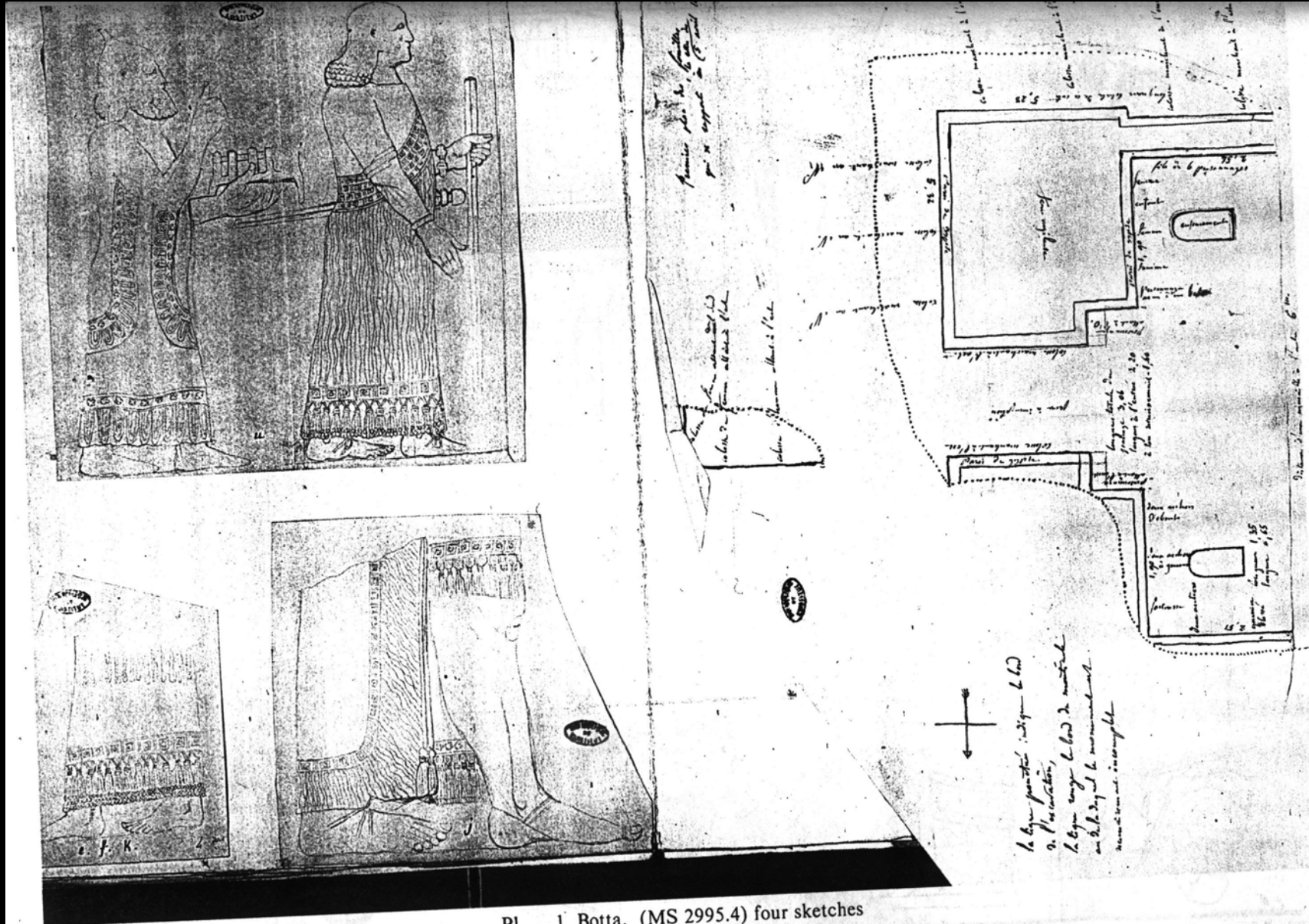


# Khorsabad

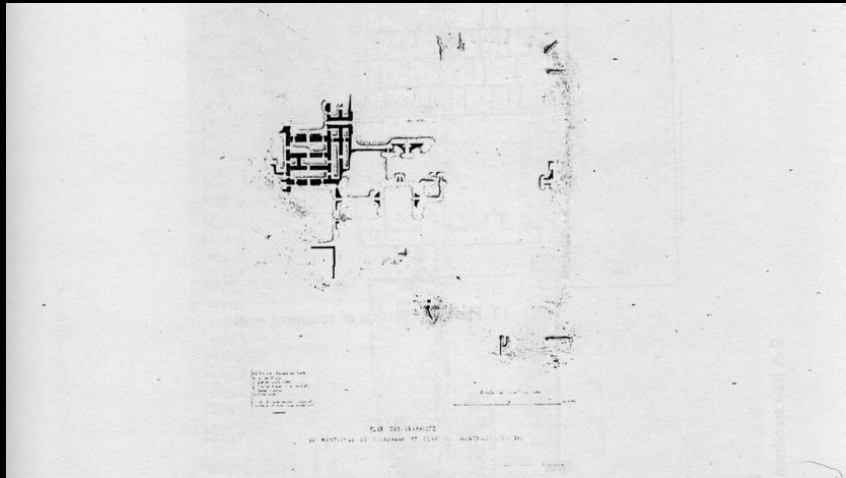


Mound and Village of Khorsabād, from the West

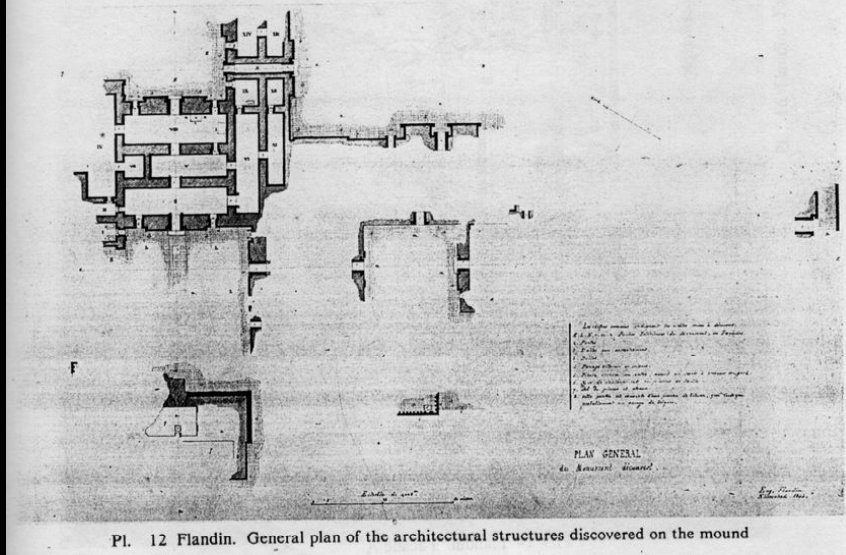
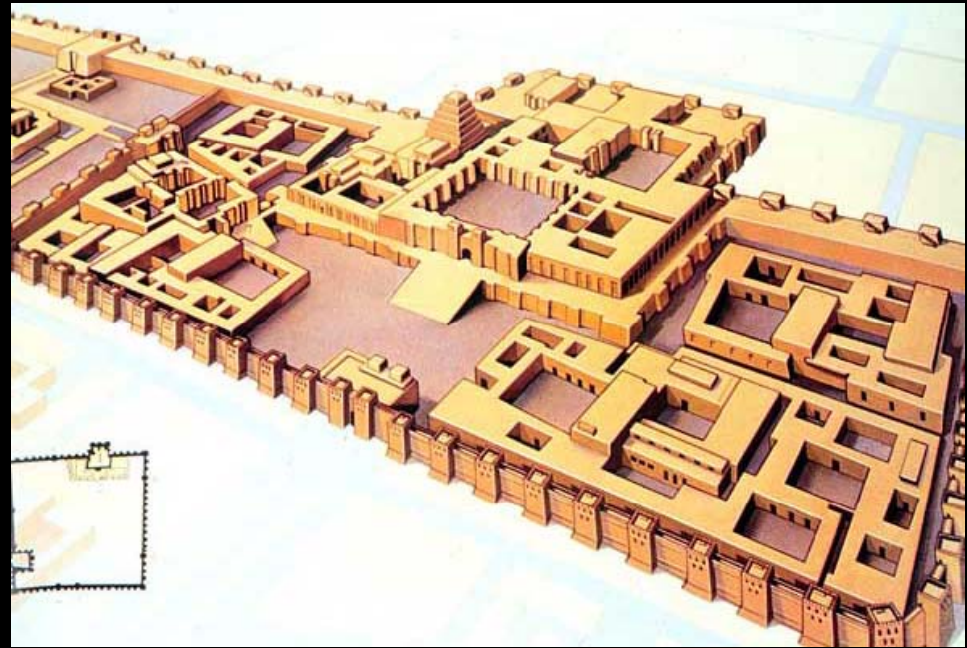
# P.E. Botta'nın J. Muhl'a gönderdiği ilk çizimler 1843



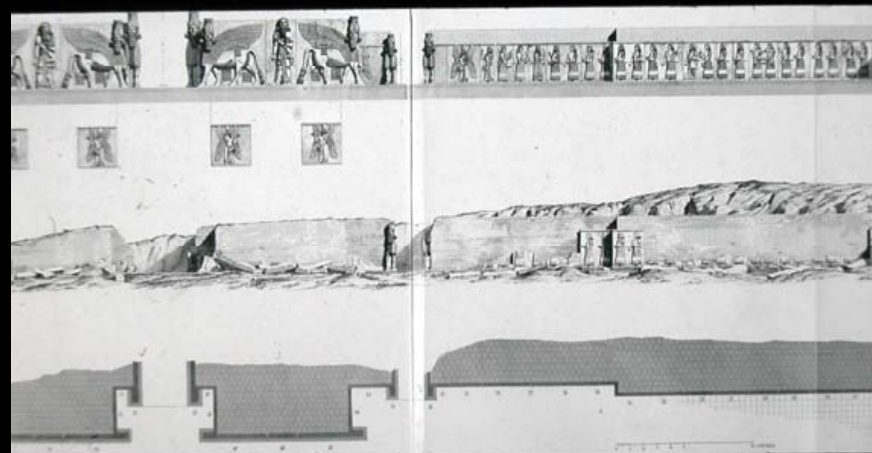
Pl. I Botta. (MS 2995.4) four sketches



Pl. 11 Flandin. Topographical plan of the mound of Khorsabad



Pl. 12 Flandin. General plan of the architectural structures discovered on the mound



## Eugène Flandin'in çizimleri

— *The First Palace Appears* —



Figure 3.2 One of the colossal bulls from Khorsabad, drawn by Flandin. (From Botta 1849: vol. I, Plate 45)

— *The First Palace Appears* —

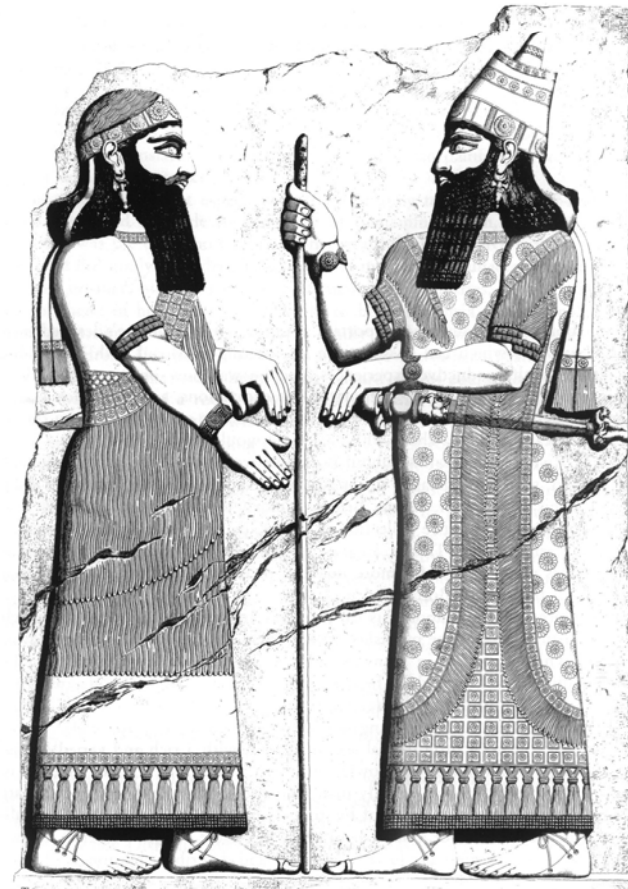
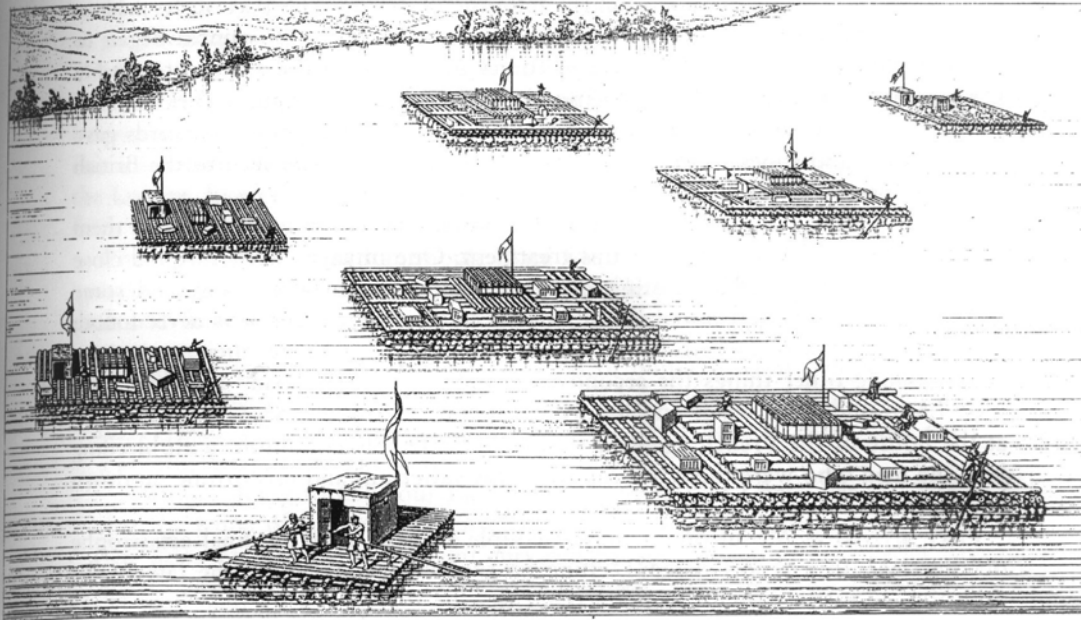
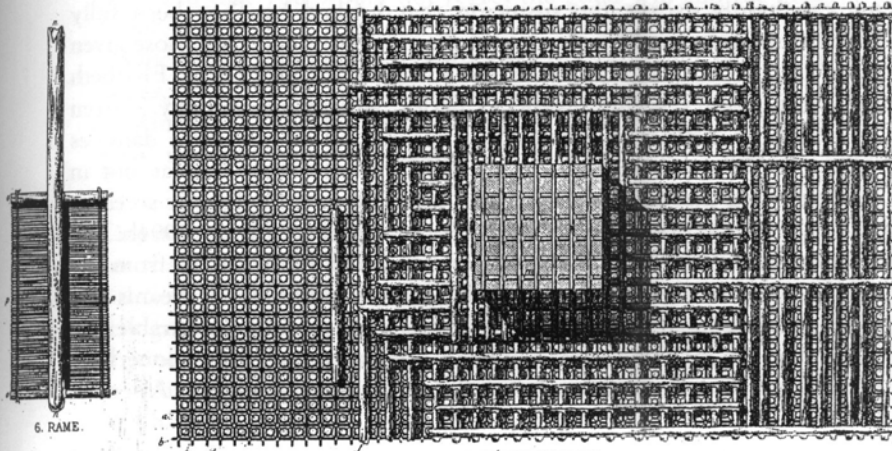


Figure 3.3 King Sargon in full regalia with crown, staff and sword confronting one of his high officials. The black beards show traces of the original paint. (From Botta 1849: vol. I, Plate 12)



3. NAVIGATION SUR LE TIGRE.



6. RAME.

4. KÉLEK MODERNE

5. OUTRE.



Figure 36.2 The proud armada of rafts on the Tigris on its way to destruction and shipwreck in the southern marshes. Below, a plan of a *kelek*, an oar, and one of the inflated sheep-skins which kept the whole thing above water. (From Place 1867, III: Plate 43)

# Louvre'daki Korsabad eserleri

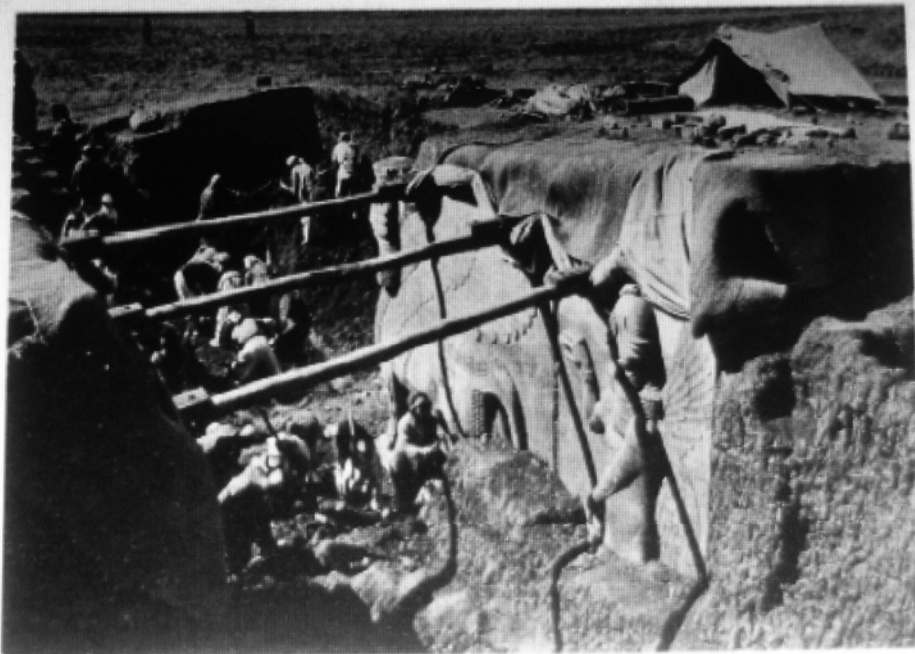


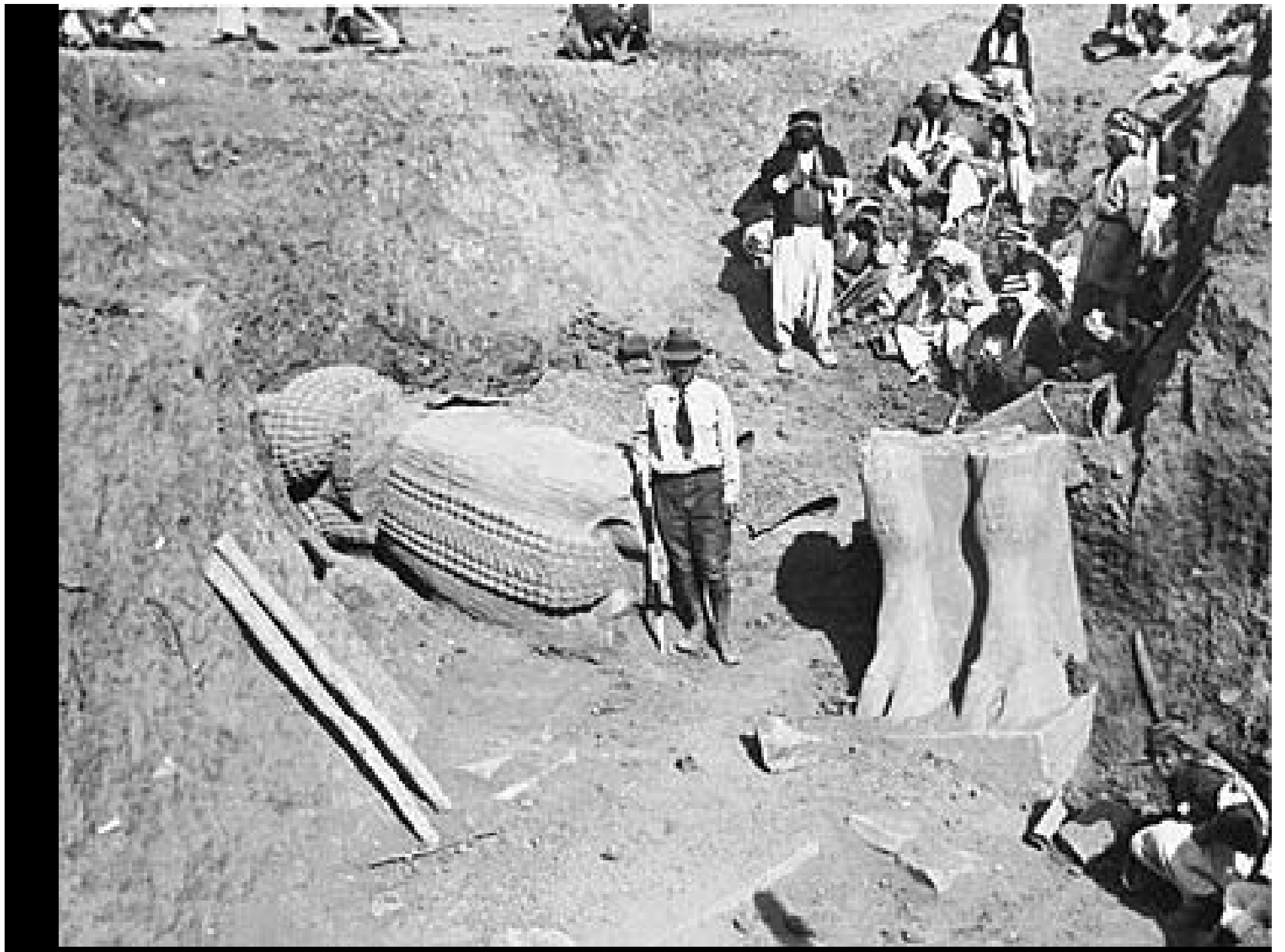


# Victor Place 1852-54

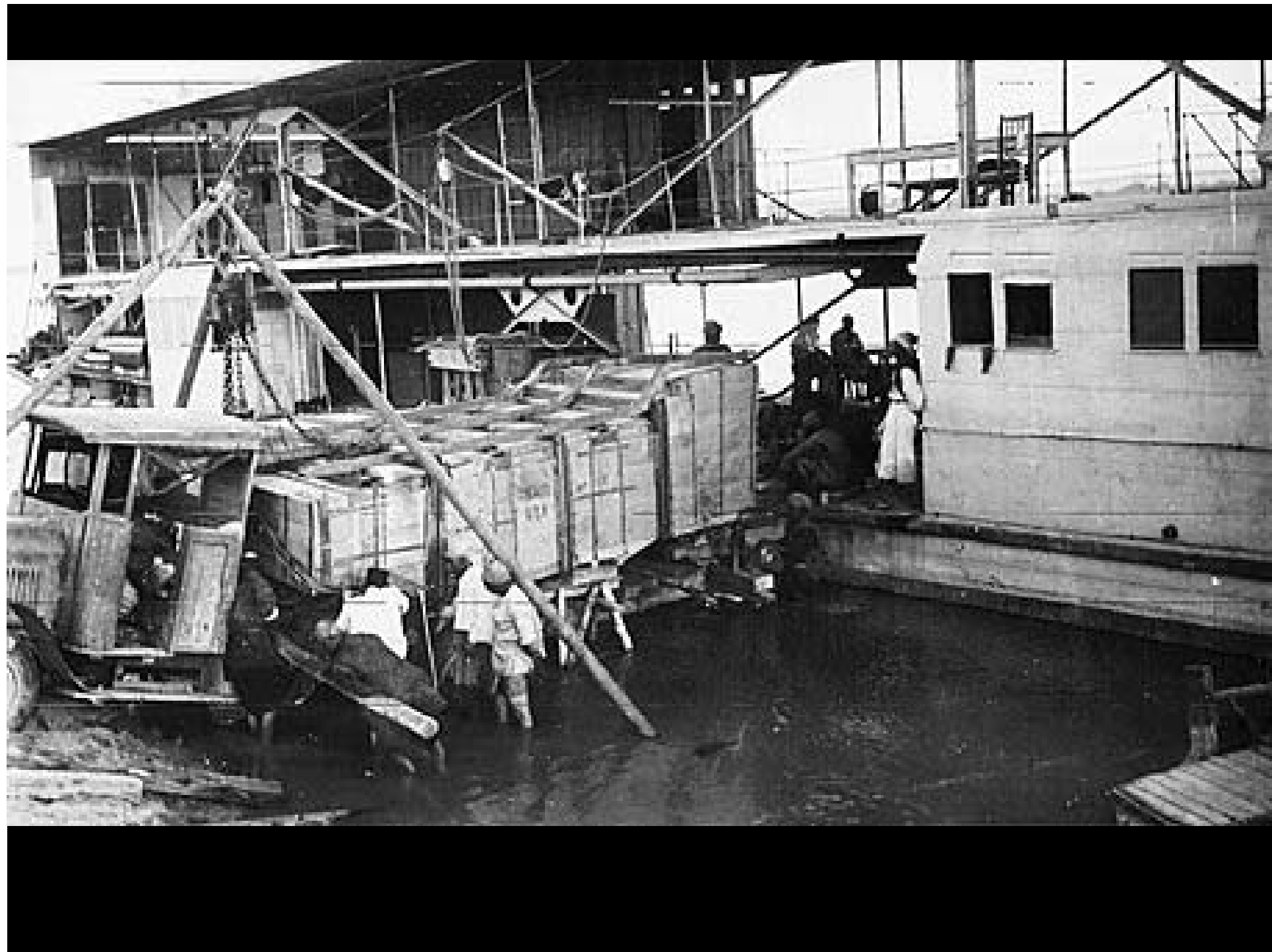
- Felix Thomas
- Edward Chiera 1927
- Henri Frankfort
- Gordon Loud
- 1938-39 Irak Eski Eserler Gen. Müd.
- Fuat Safar















17 - H. FRANKFORT (1897-1954)



# Chicago Oriental Institute Museum

