



Uruk / Warka

Uruk / Warka

- 1849, 53 W.Kenneth Loftus
- 1912 Julius Jordan
- 1928 A. Nöldeke, E. Heinrich, H.J.Lenzen
- 1953 Lenzen
- H.J.Schmidt
- 1980 R.M.Boehmer



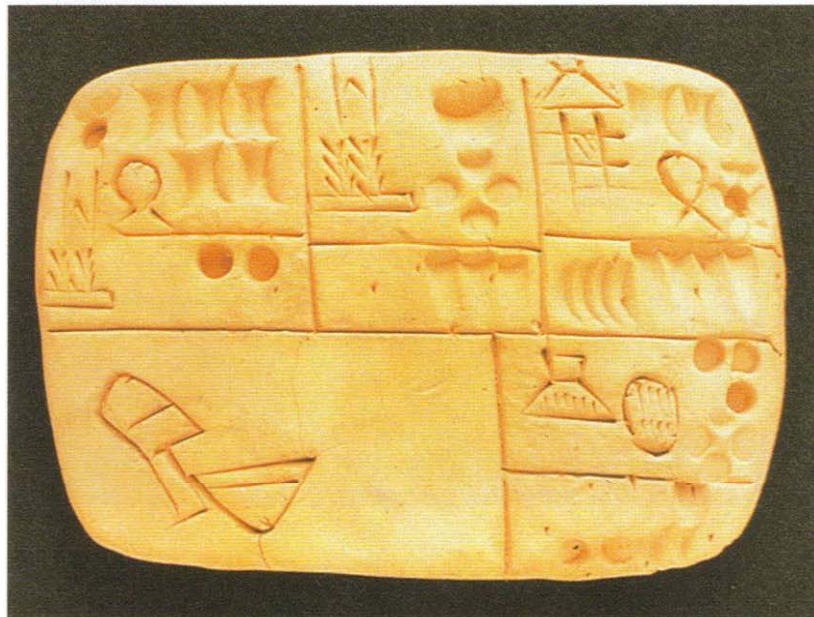
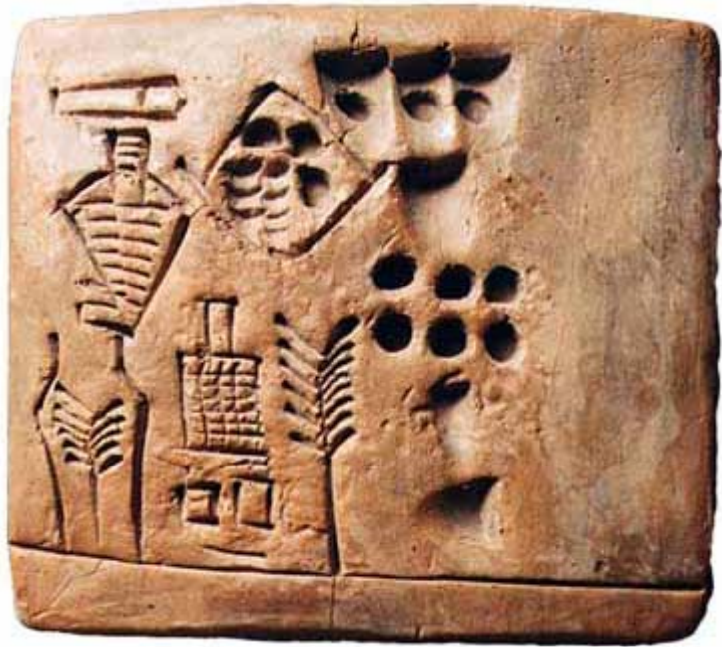
The Uruk Period

Uruk / Warka

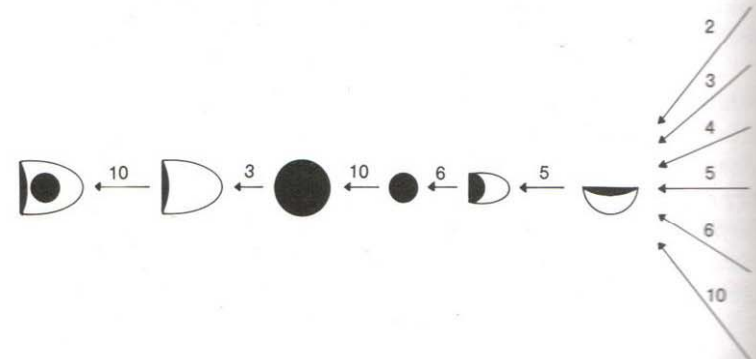




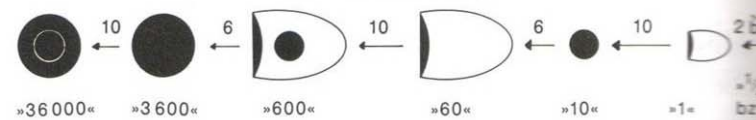
Baghdad, Iraq Museum, Storage
Votive Bowl from Warka, Fragments

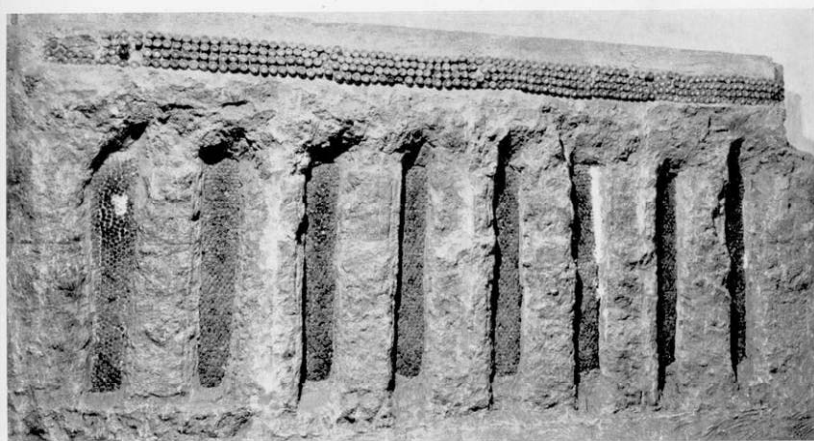


Hohlmaßsystem

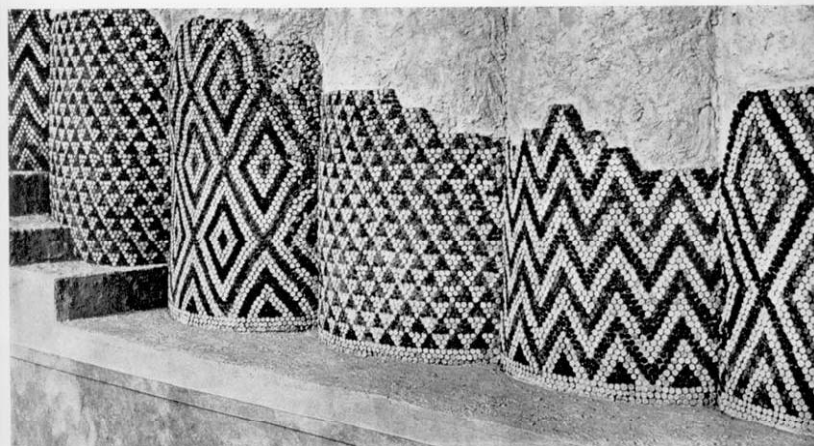


Sexagesimalsystem





1. Niches decorated with cone mosaics from the pillar terrace at Warka. Baghdad, Iraq Museum

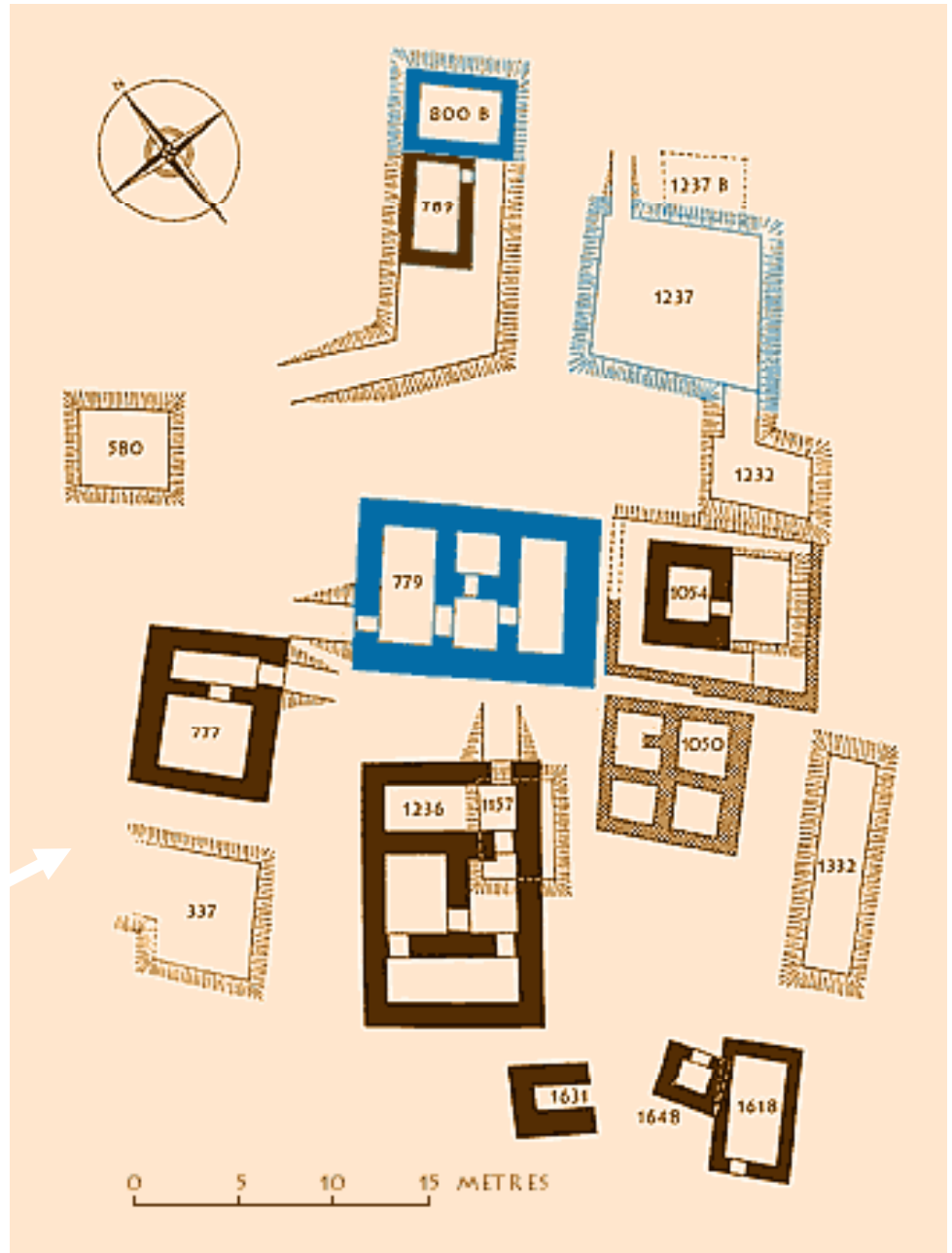
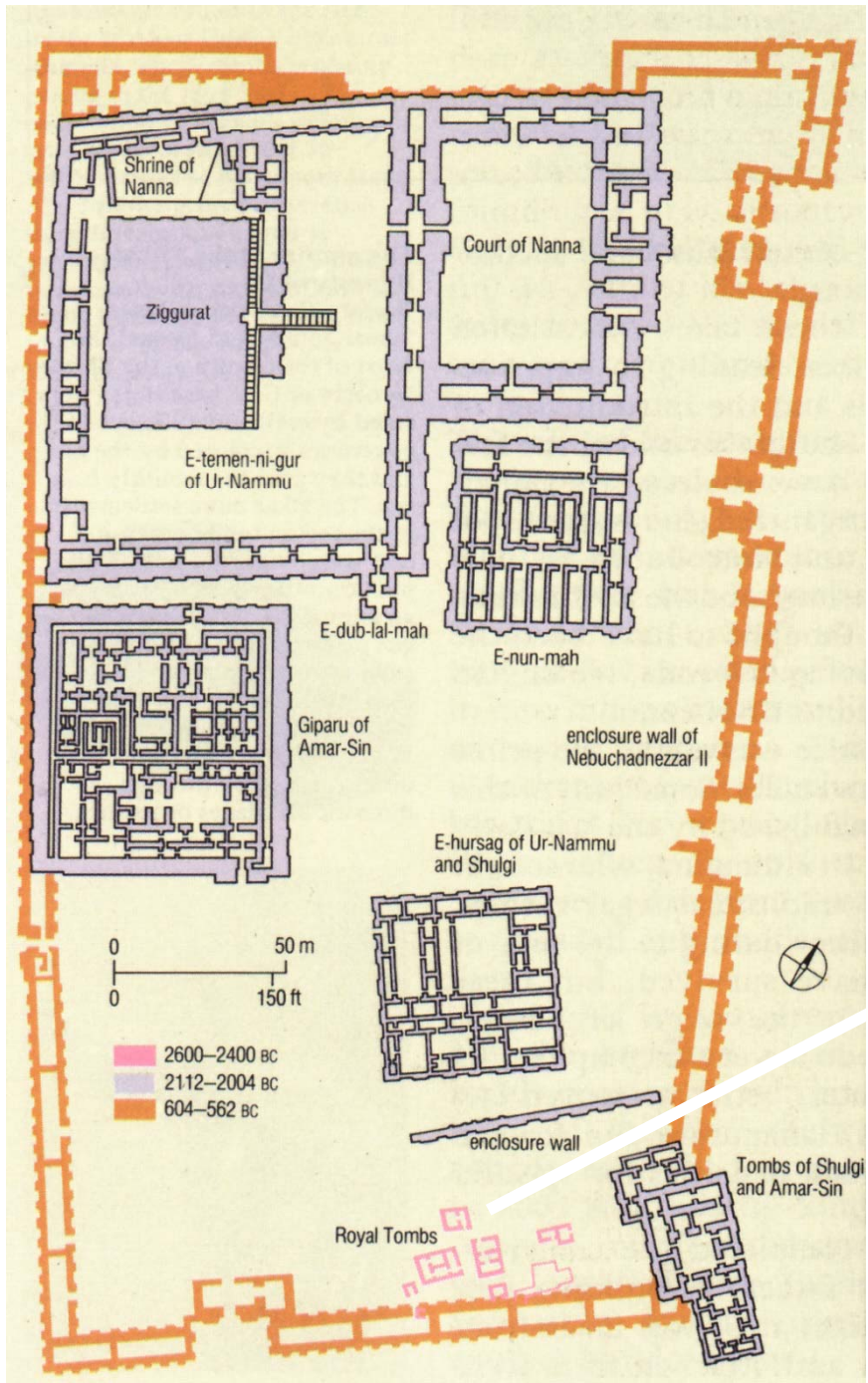


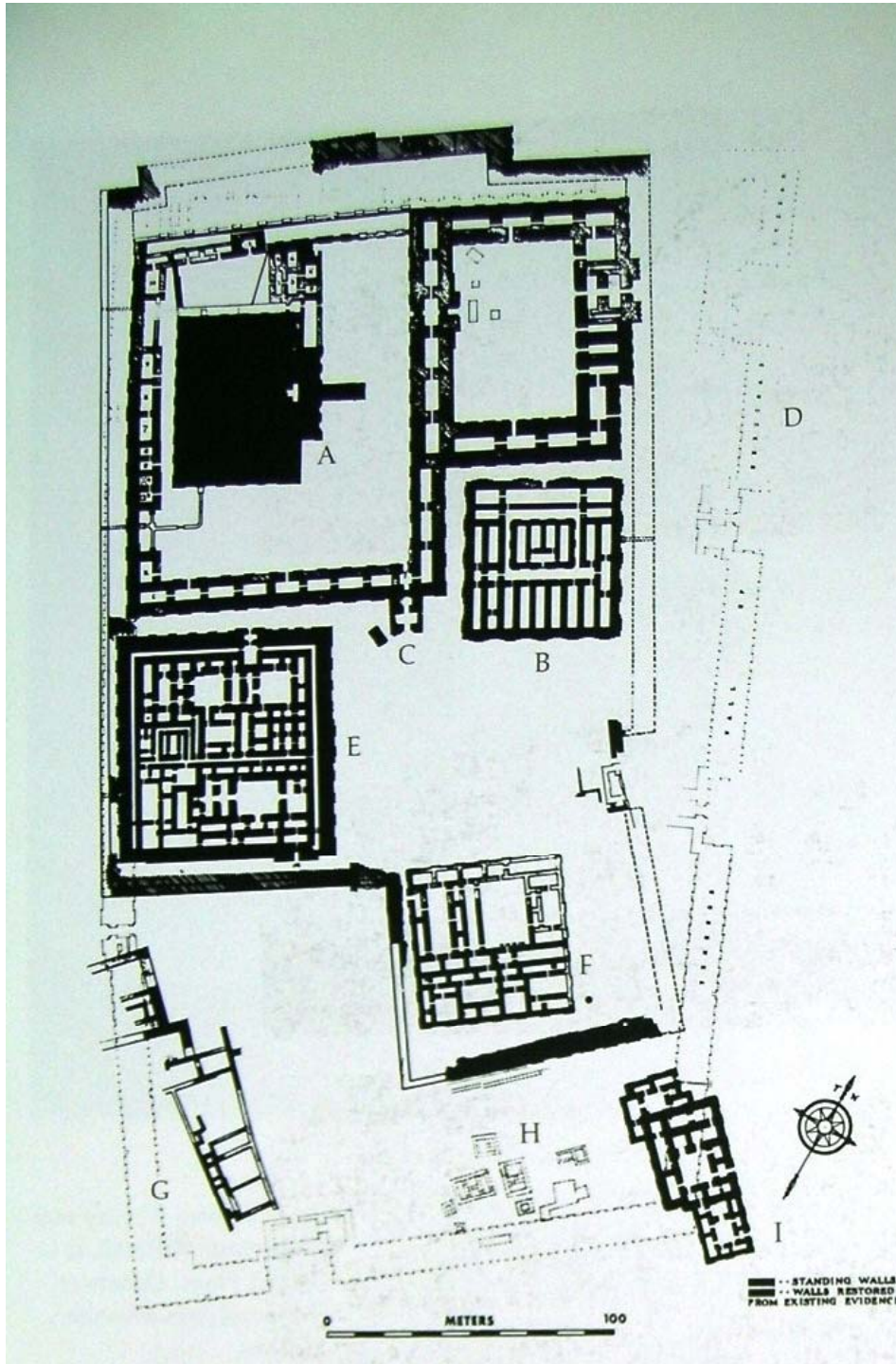


Tell Al-Mukayyar

Eski Ur kenti

- Pietro Della Valle
- J.B.Fraser
- W Kennet Loftus
- J.E.Taylor
- Rawlinson
- R. Campbell-THOMPSON
- H.R.Hall
- Leonard Woolley





A. Zigurrat

B. Enunmah

C. Edublalmah

D. Nabukadnezarin Temenosu

E. Giparu

F. Ehursag

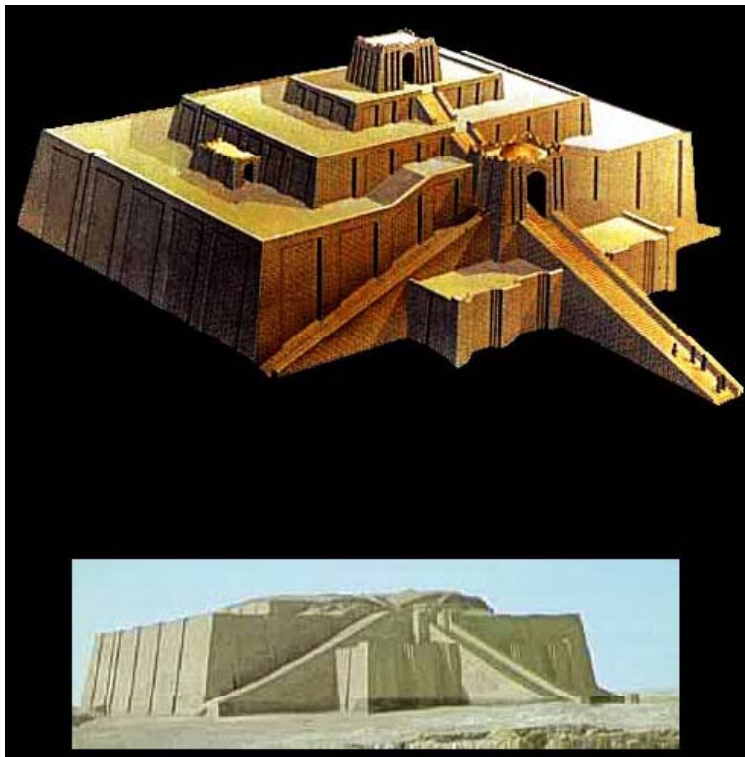
H. Kral mezarları

I. III.Ur Sülalesine ait mezarlar

1853-54 J.E.Taylor'ın ilk kazısı

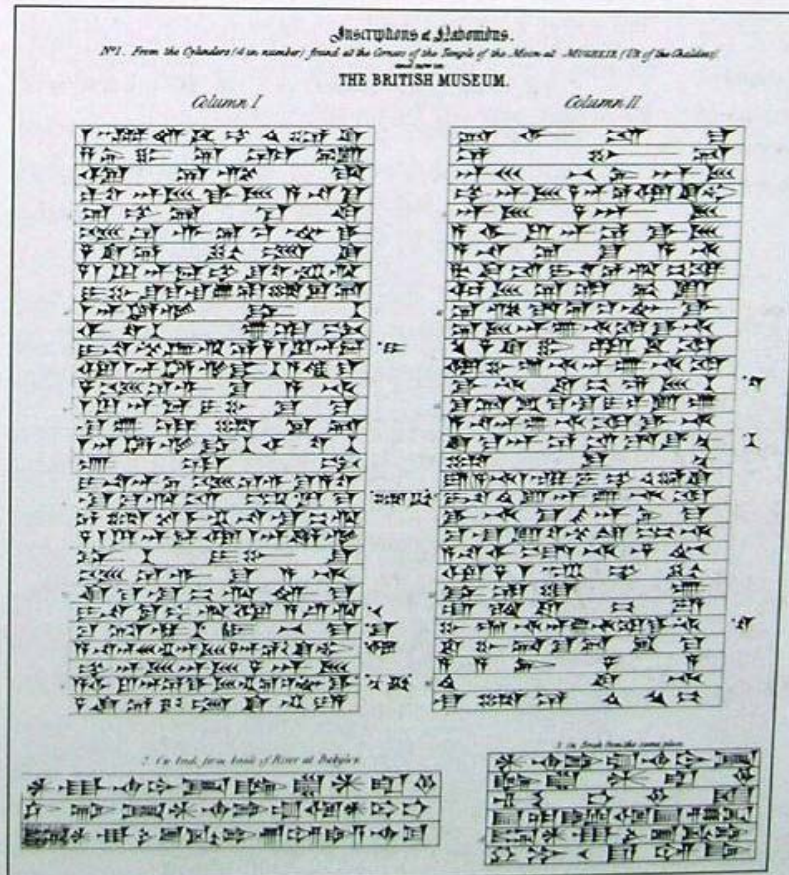
1918 R. Campbell-Thompson

H.R.Hall 1918 sonu.



In late 1918, the British Museum sent H. R. Hall, then a captain in the Intelligence Corps, to continue Campbell-Thompson's work at Ur.¹² Allotted seventy Turkish prisoners of war as laborers, Hall worked continuously for three and a half months, from mid-February to the end of May 1919. Basically, Hall followed Taylor's

Fig. 7. H. C. Rawlinson's copy of the inscriptions on clay cylinders recovered during excavations of the ziggurat at Ur in 1854. The inscriptions permitted him to identify Tell al-Muqayyar as the ancient city of Ur. Reprinted from Rawlinson 1861: pl. 68.





Sir C. Leonard Woolley

1922

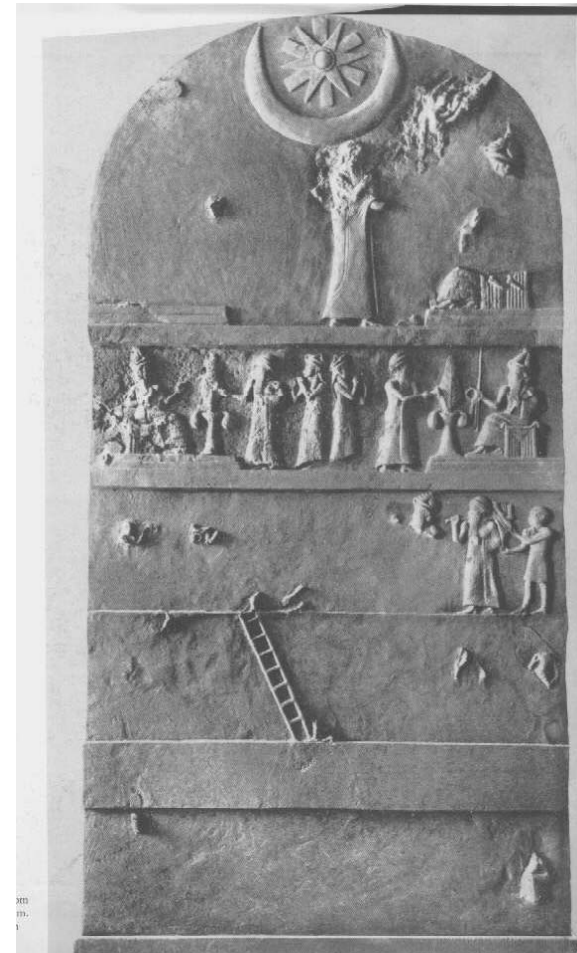
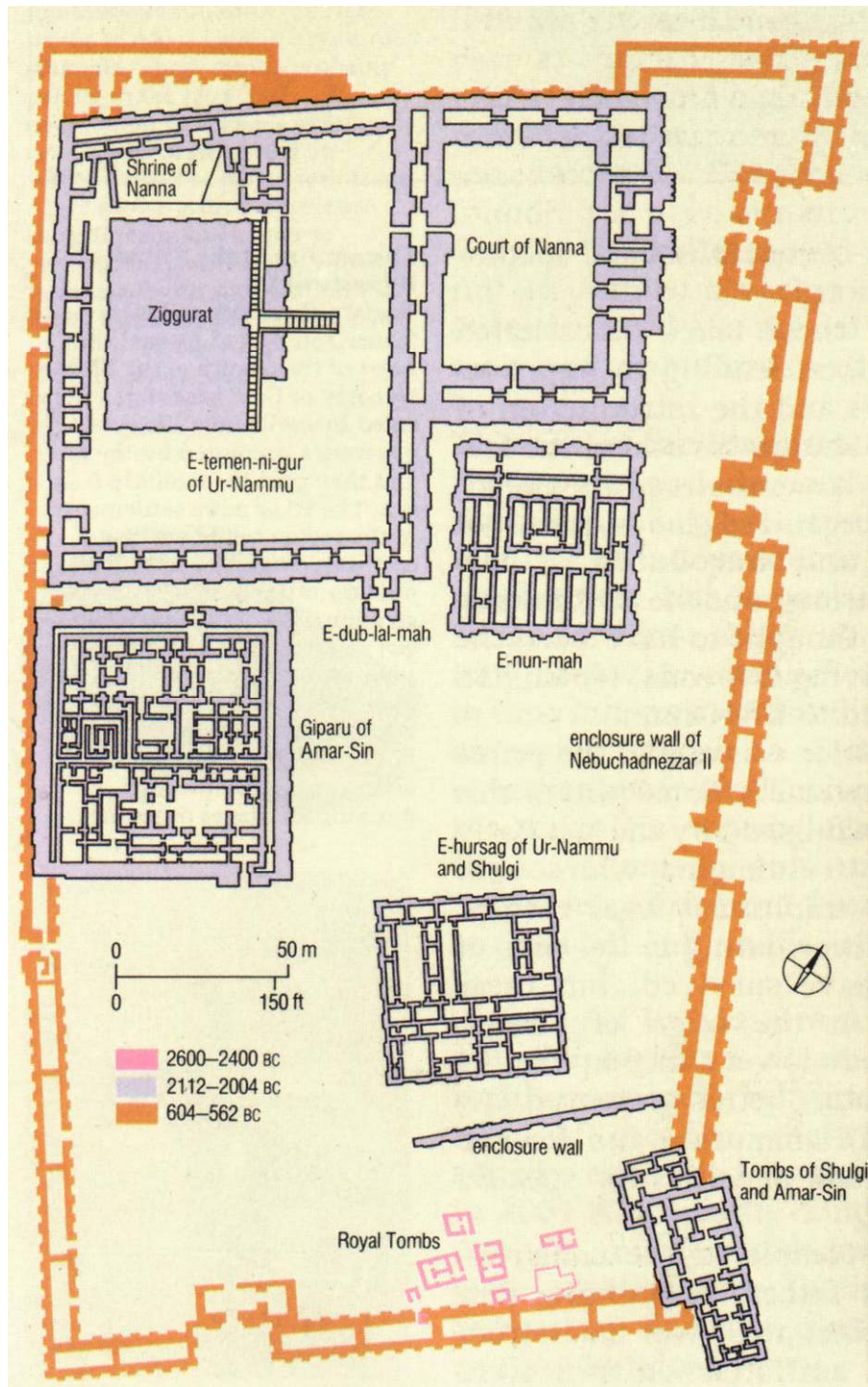


Amurath to Amurath (1911).
so an archaeologist and had
the Abbasid fortress, Ukaidir,
rld War I.²² She had previously

Fig. 8. Leonard Woolley with
his foreman, Hamoudi, at Ur
in 1930. Photo: University
of Pennsylvania Museum
Archives.



Ur-Nammu Steli



1927 krali mezarlar bulunuyor

Fig. 14. The northeast end of the cemetery during the last days of work in 1927. Photo: University of Pennsylvania Museum Archives.

Fig. 15. Dagger in its sheath of gold from PG 580. L. 37.3 cm (U.9361). Photo: University of Pennsylvania Museum Archives.



CLASS OF SERVICE

This is a full-rate Telegram or Cablegram unless its deferred character is indicated by a suitable sign above or preceding the address.

645
WESTERN UNION

NEWCOMB CARLTON, PRESIDENT

J. C. WILLEVER, FIRST VICE-PRESIDENT

Form 1901 B

SIGNS

- DL = Day Letter
- NM = Night Message
- NL = Night Letter
- LCO = Deferred Cable
- CLT = Cable Letter
- WLT = Week-End Letter

The filing time as shown in the date line on full-rate telegrams and day letters, and the time of receipt at destination as shown on all messages, is STANDARD TIME.
Received at Western Union Building, 230 So. 11th St., Philadelphia, Pa.

NH196 CABLE BASRA 23 4/115 CA

1928 JAN 4 AM 6 43

ANTIQUE. UNIVERSITY OF PENNSYLVANIA

PHILADELPHIA (PENNY)

33 & SPRUCE

TUMULUM SAXIS EXSTRUCTUM PATERICIA ARCATUM, INTEGRUM INVENI
 REFINAE, SHUBAD, VESTE GEMMATA, CORONIS FLORIBUS REPTISQUE
 INTEXTIS DECORAE MONIFIBUS, FOCULIS AURI, SUMPTUOSAE
 WOOLLEY.

*I found the intact tomb, stone built
 and vaulted over with bricks of queen Shubad
 adorned with a dress ^{in which} where gems, flower
 crowns and animal figures are woven in -
~~to~~ ^{found} magnificent work of jewels and golden cups*

Fig. 16. Woolley's telegram in Latin to the University Museum announcing his discovery of the tomb of Queen Shubad (Puabi). Photo: University of Pennsylvania Museum Archives.

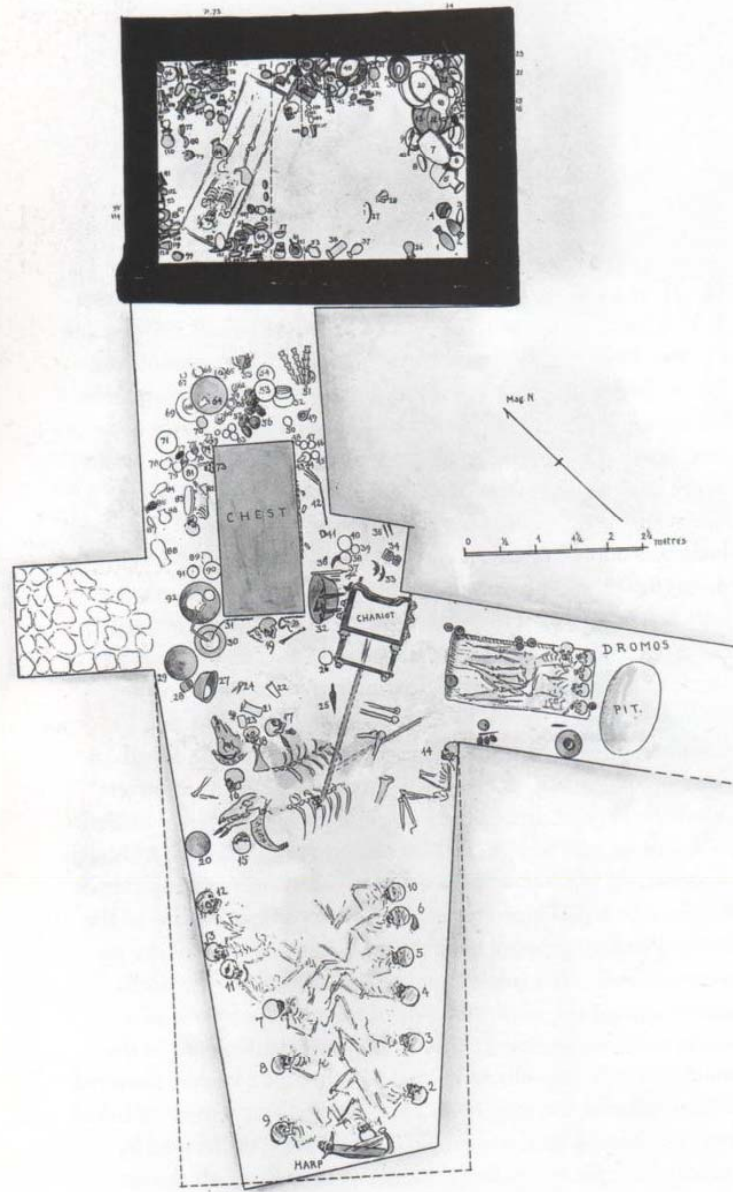
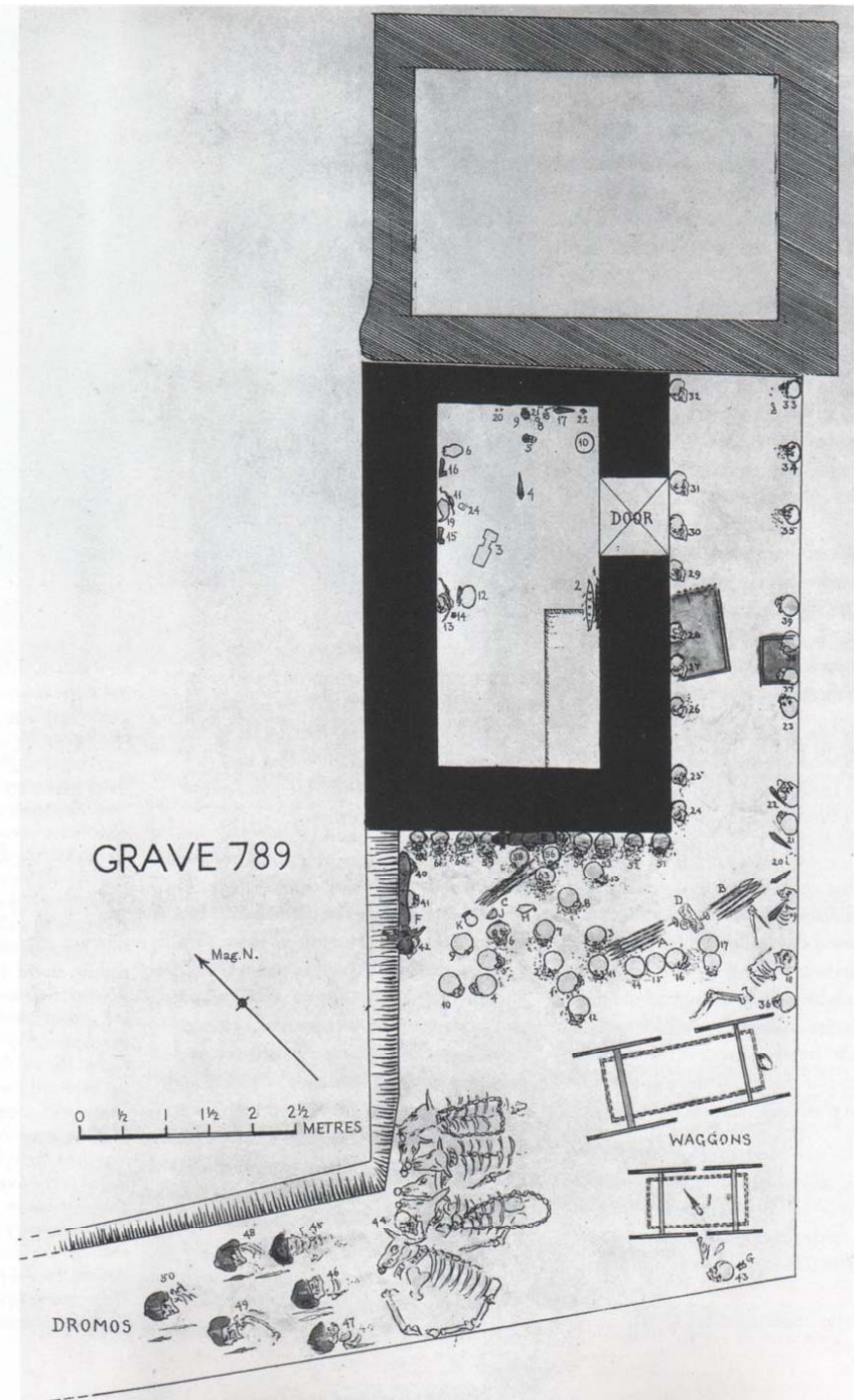
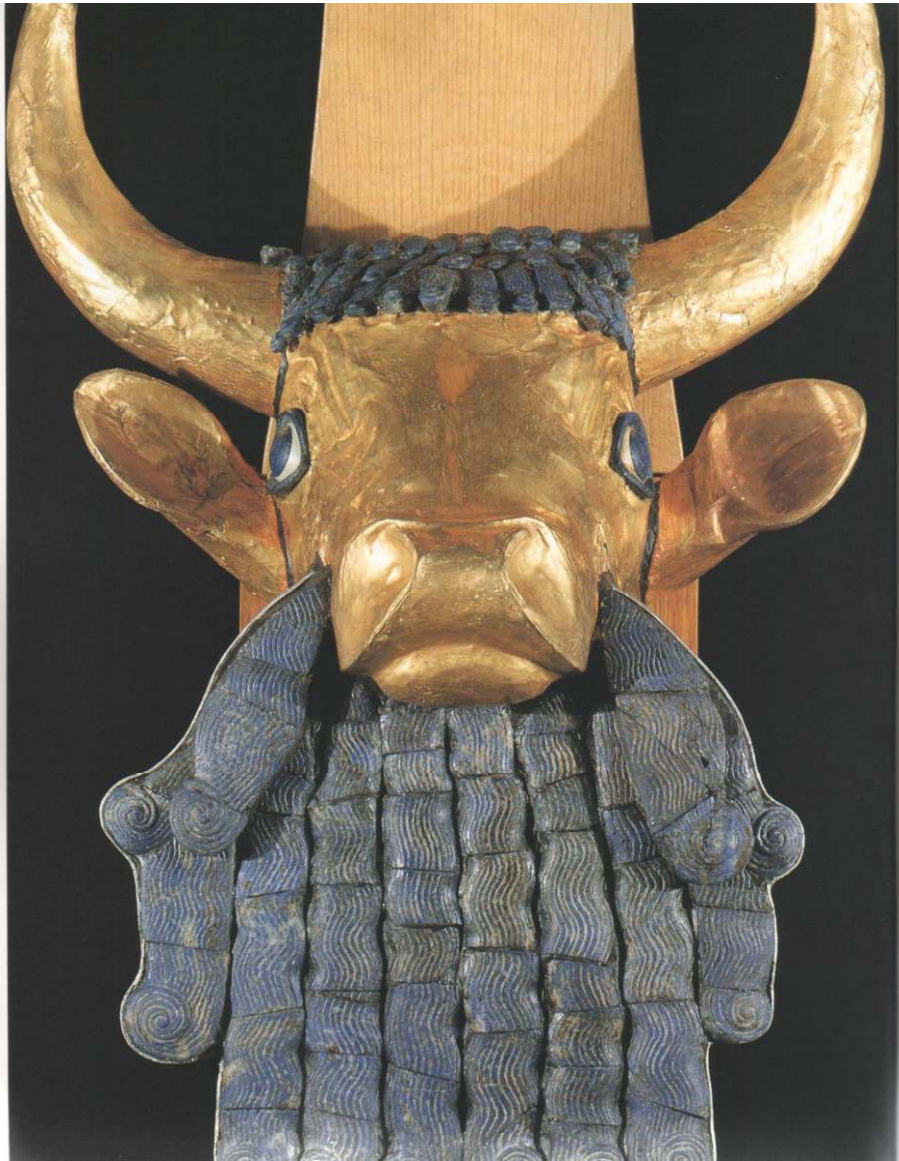
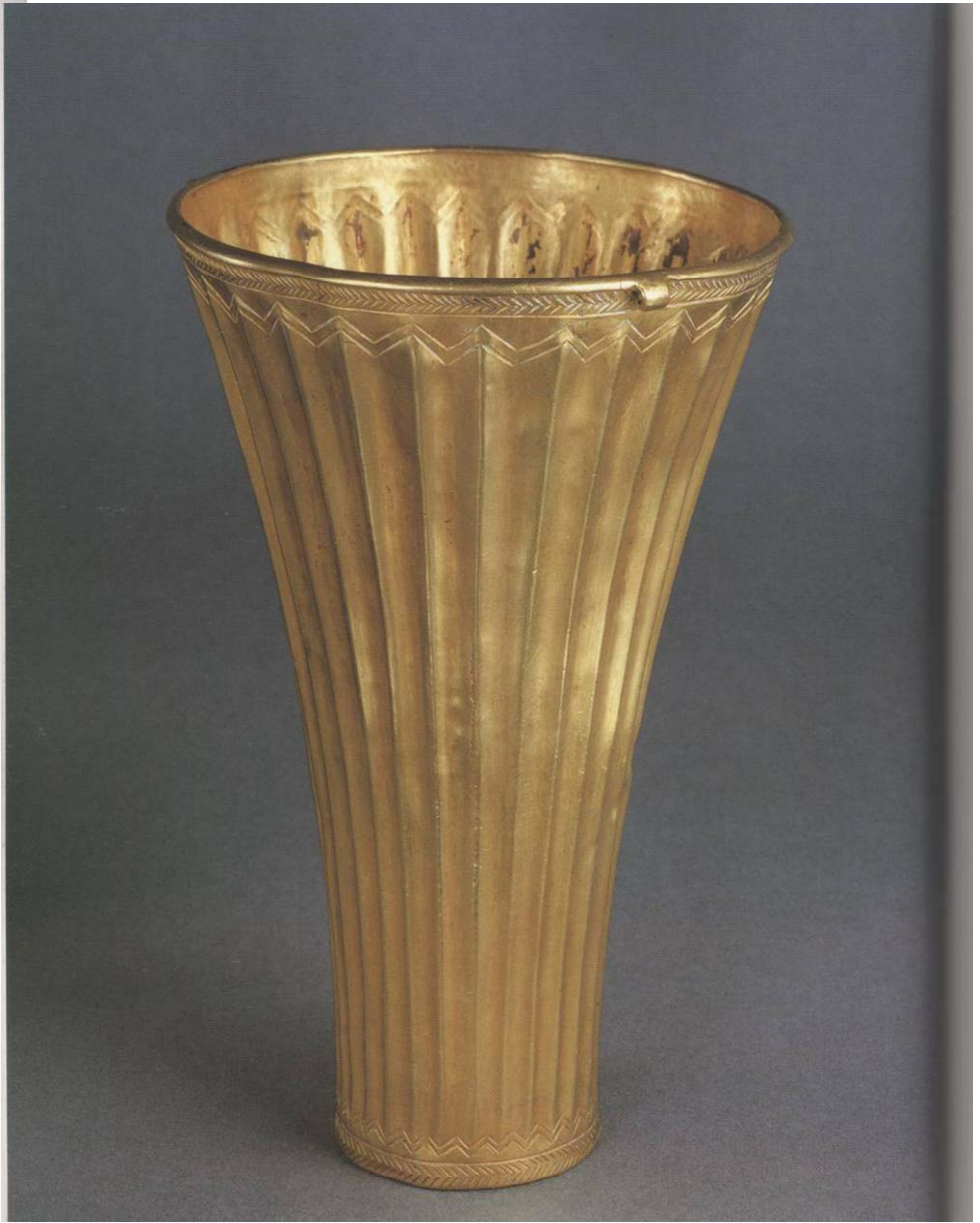


Fig. 31. Plan of PG 800, Puabi's tomb. The tomb chamber, containing Puabi's bier, body, and three attendants, is at the top of the plan; the death pit, with wooden chest or wardrobe, chariot, oxen, and more attendants, is at the bottom. Reprinted from Woolley 1934b: pl. 36.









146
DAGGER
Gold with wood restoration
L. 33 cm (restored)
PG 1054
30-12-550 (U.11513)



37
* EARRING
Gold
Dm. 7.3 cm
PG 800, Puabi's death pit,
with female attendant
(Body no. 1)
B16777a (U.9977)

* EARRING
Gold
Dm. 7.5 cm
PG 800, Puabi's death pit,
with female attendant
(Body no. 1)
B16777b (U.9977)



38
* WREATH
Gold, lapis lazuli, and
carnelian
L. 40 cm
PG 800, Puabi's death pit,
with female attendant
(Body no. 1)
B16705 (U.9979)



