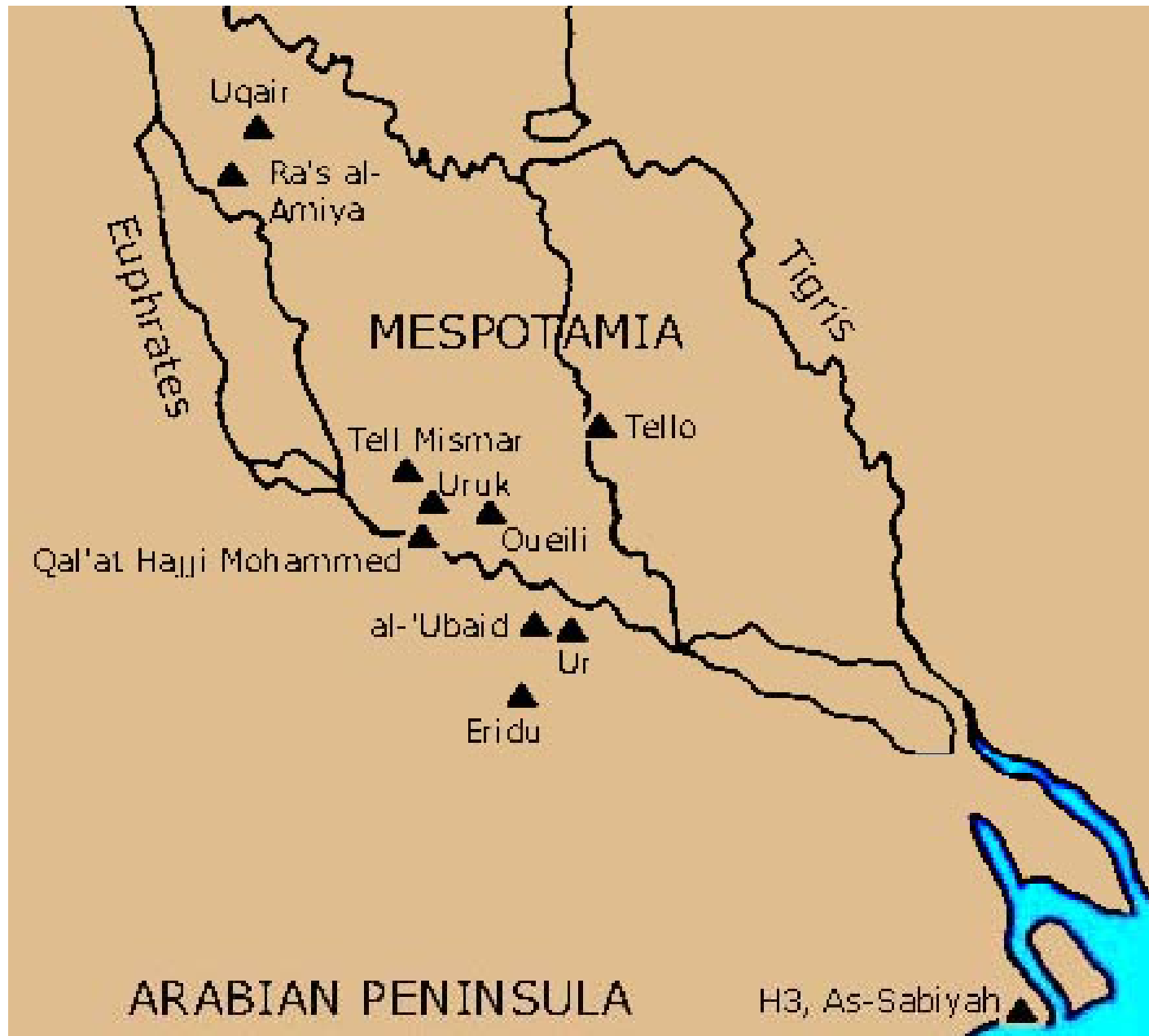
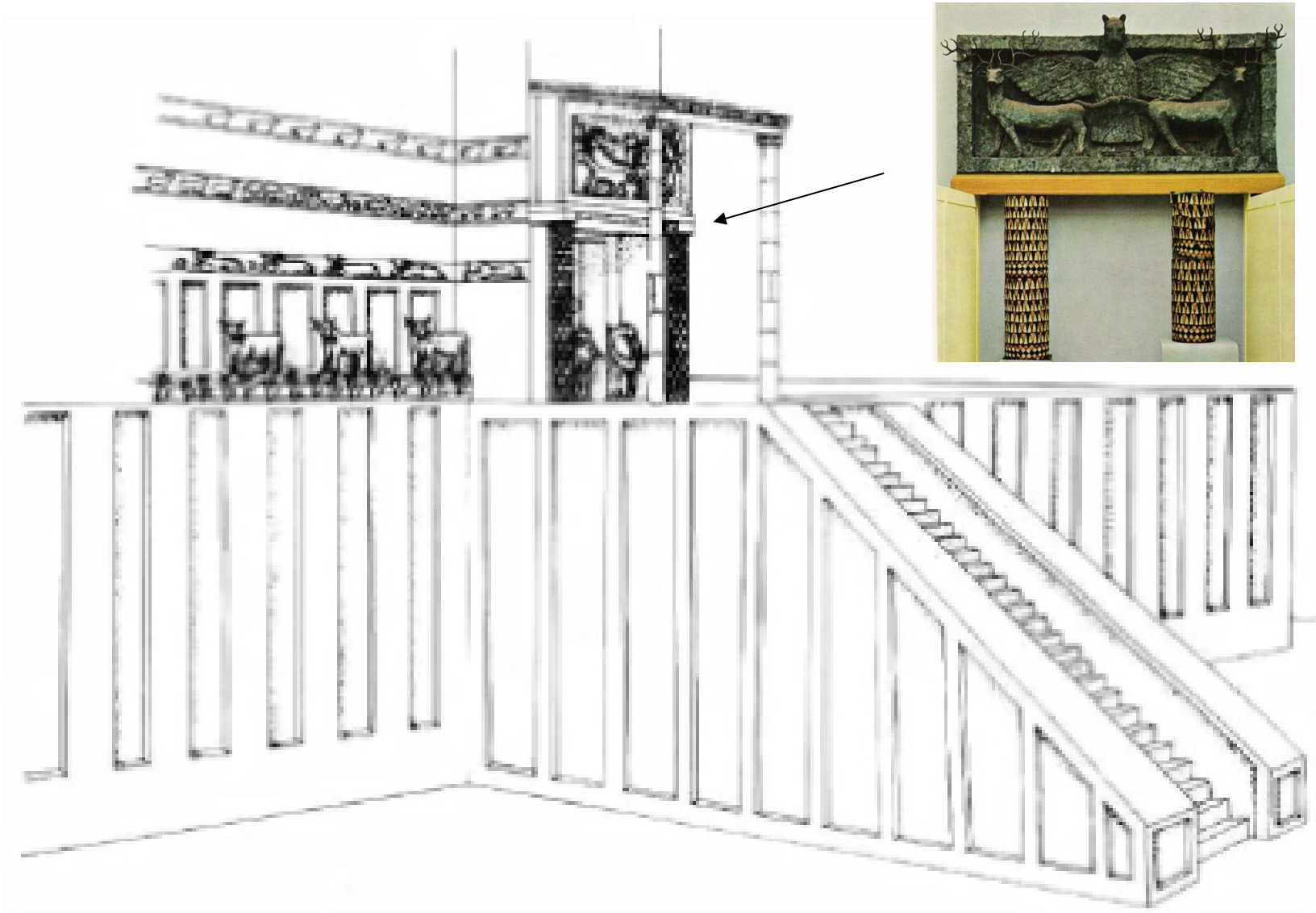


TELL AL-UBAID



1919-22 H.R.Hall
1923-24 C. Leonard Woolley





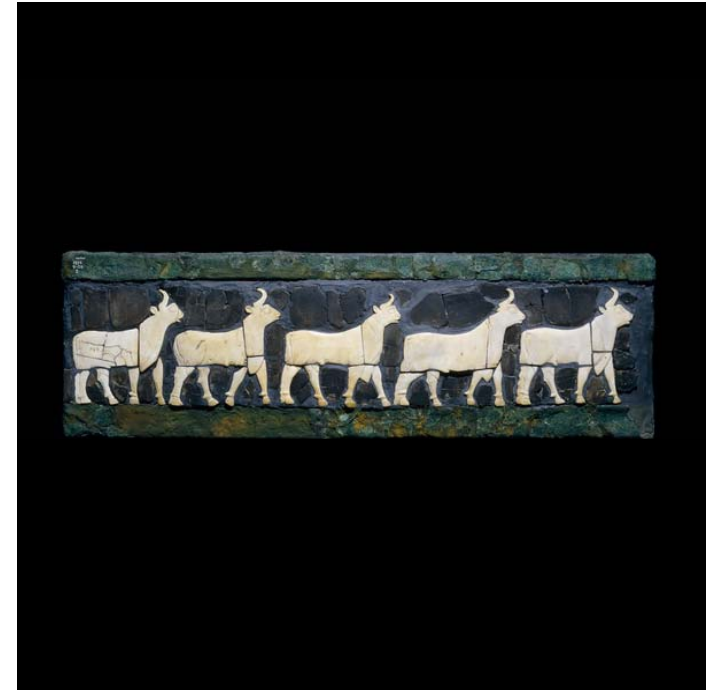
Ninhursag mabet cephesi

4.17 The decoration of the temple at Tell Ubaid



Tell el- Ubaid

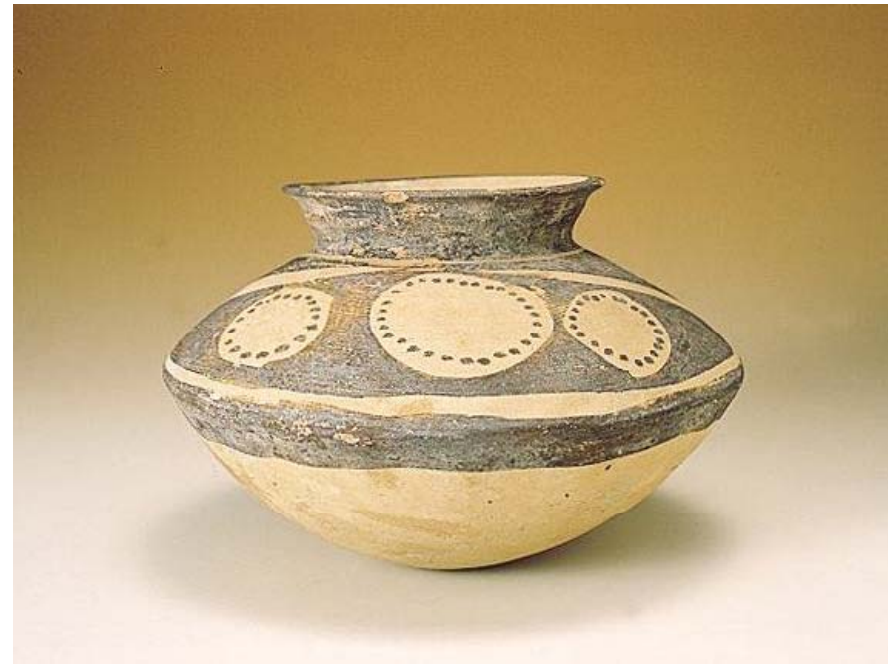
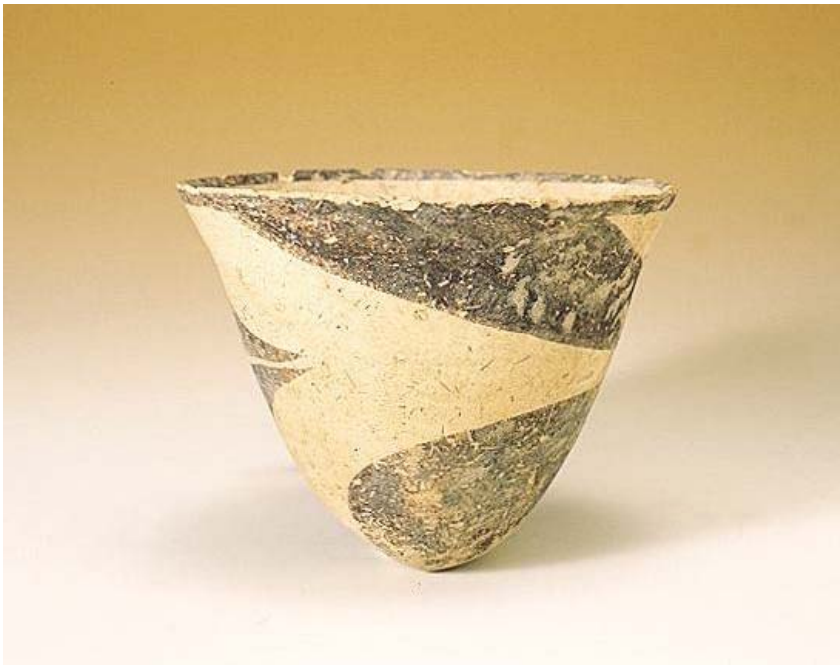
Ninhursag mabet cephesi



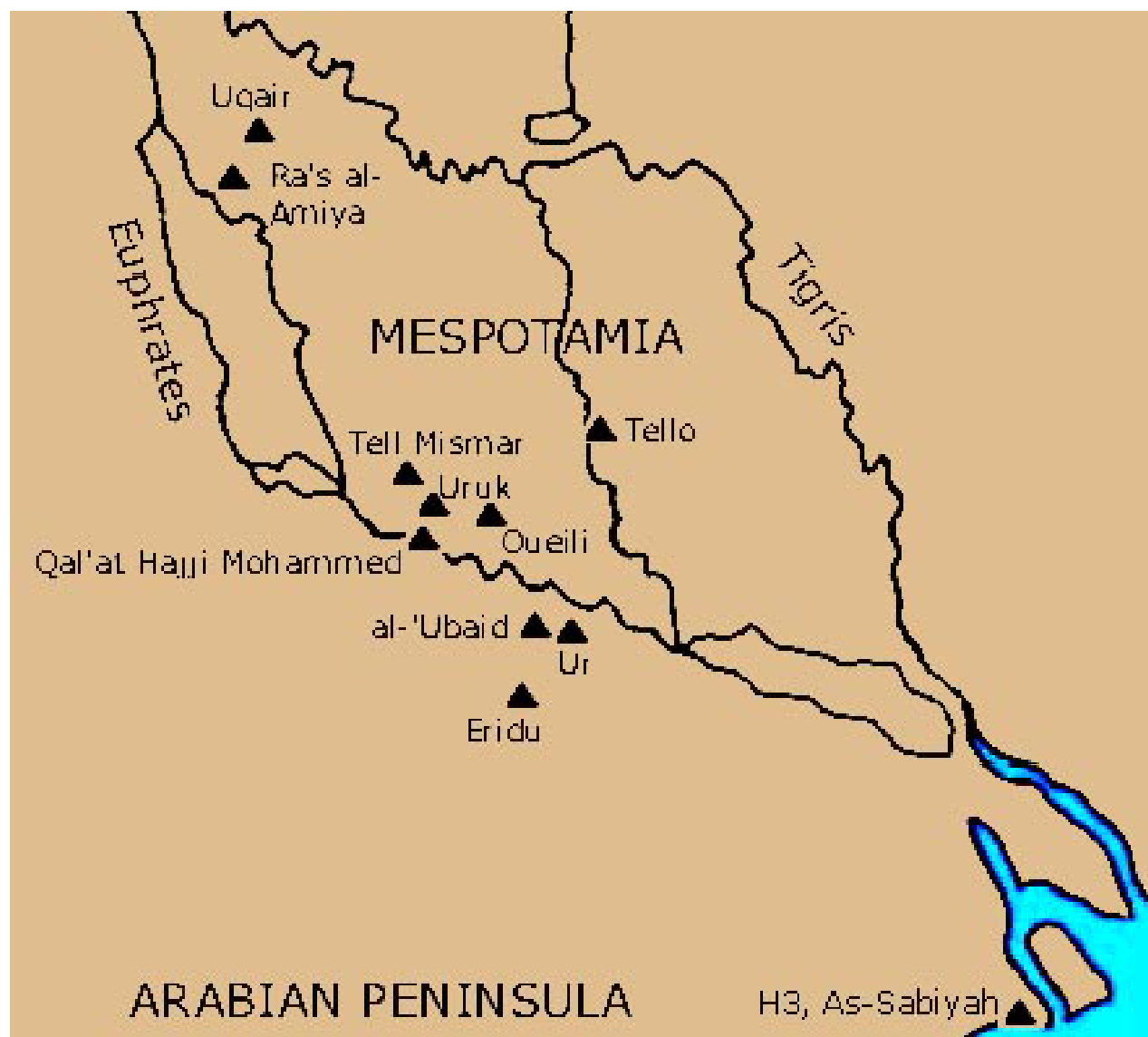
1937 Pinhas Delougaz
1960 Seton Lloyd



Ubeyd seramiği



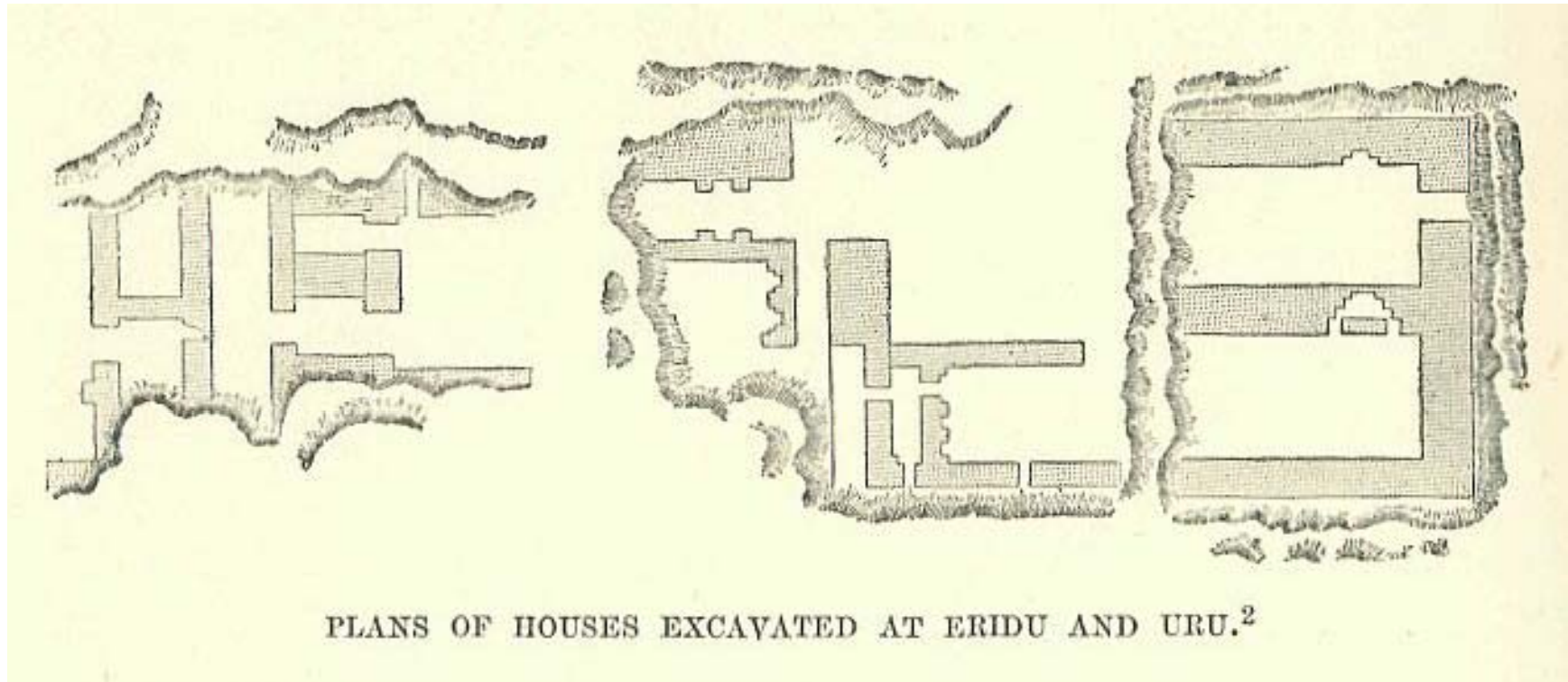
Eridu / Abu Shahrain

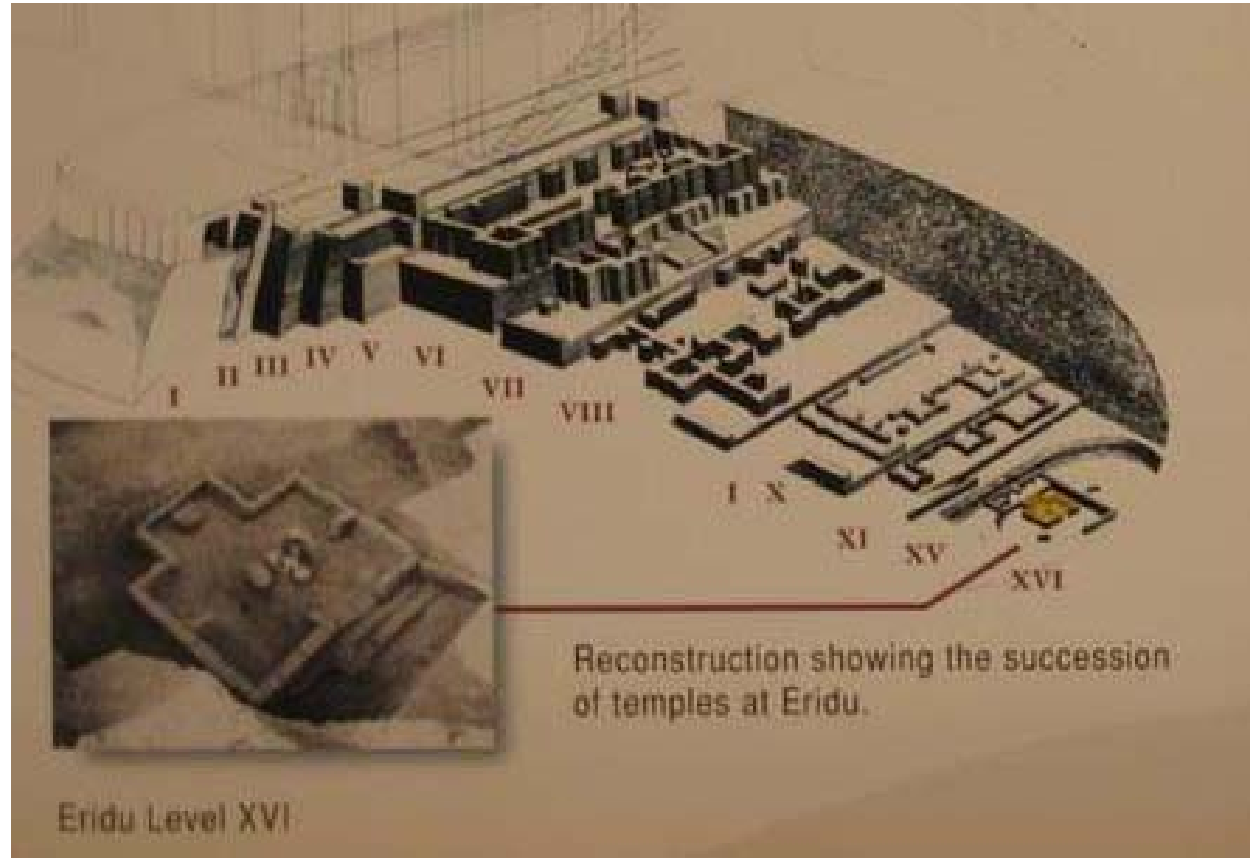


Charles François Lenormant

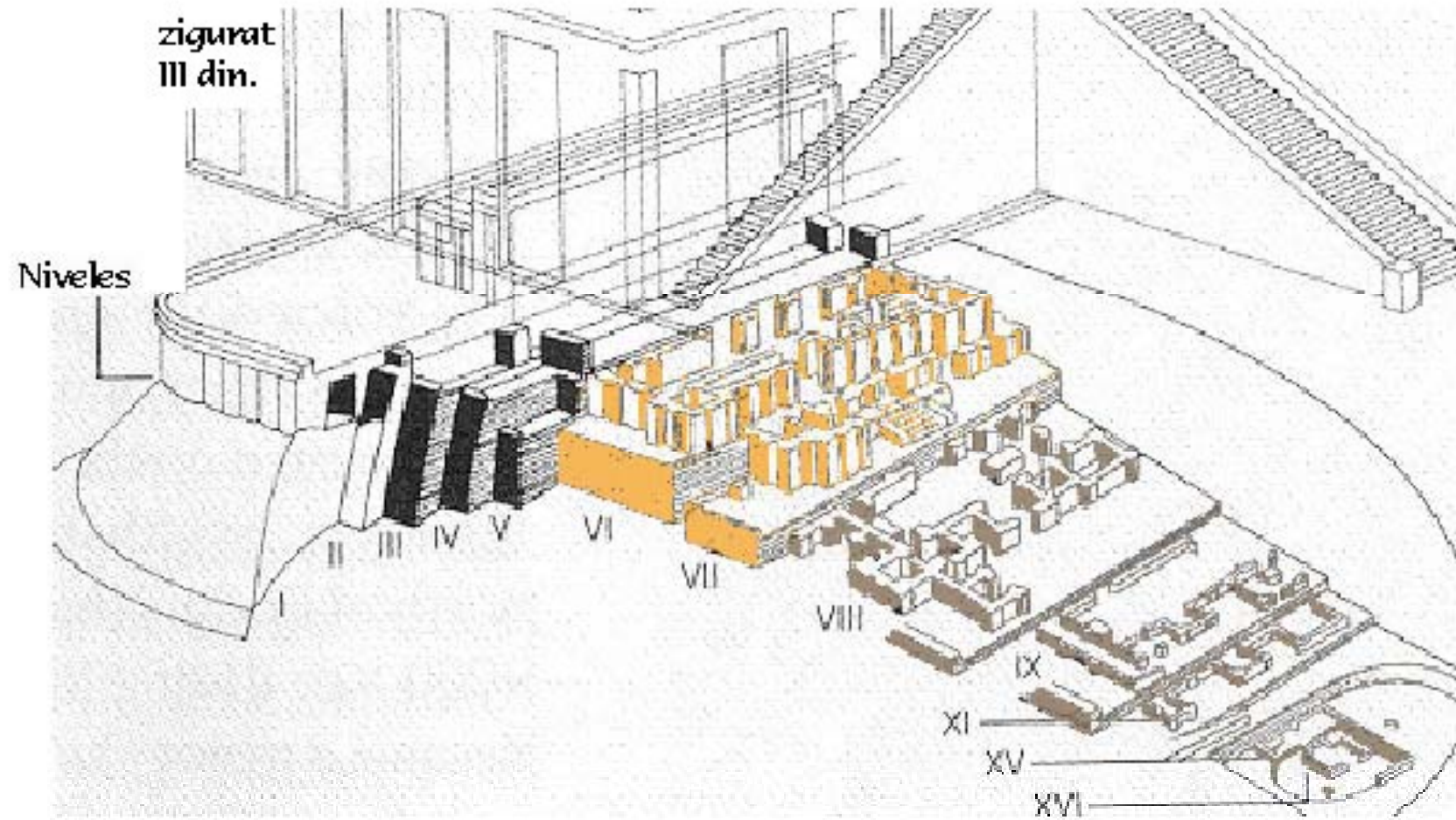


J.E.Taylor 1854
R.Campbell Thompson
Harry R. Hall





Eridu Level XVI





13

12

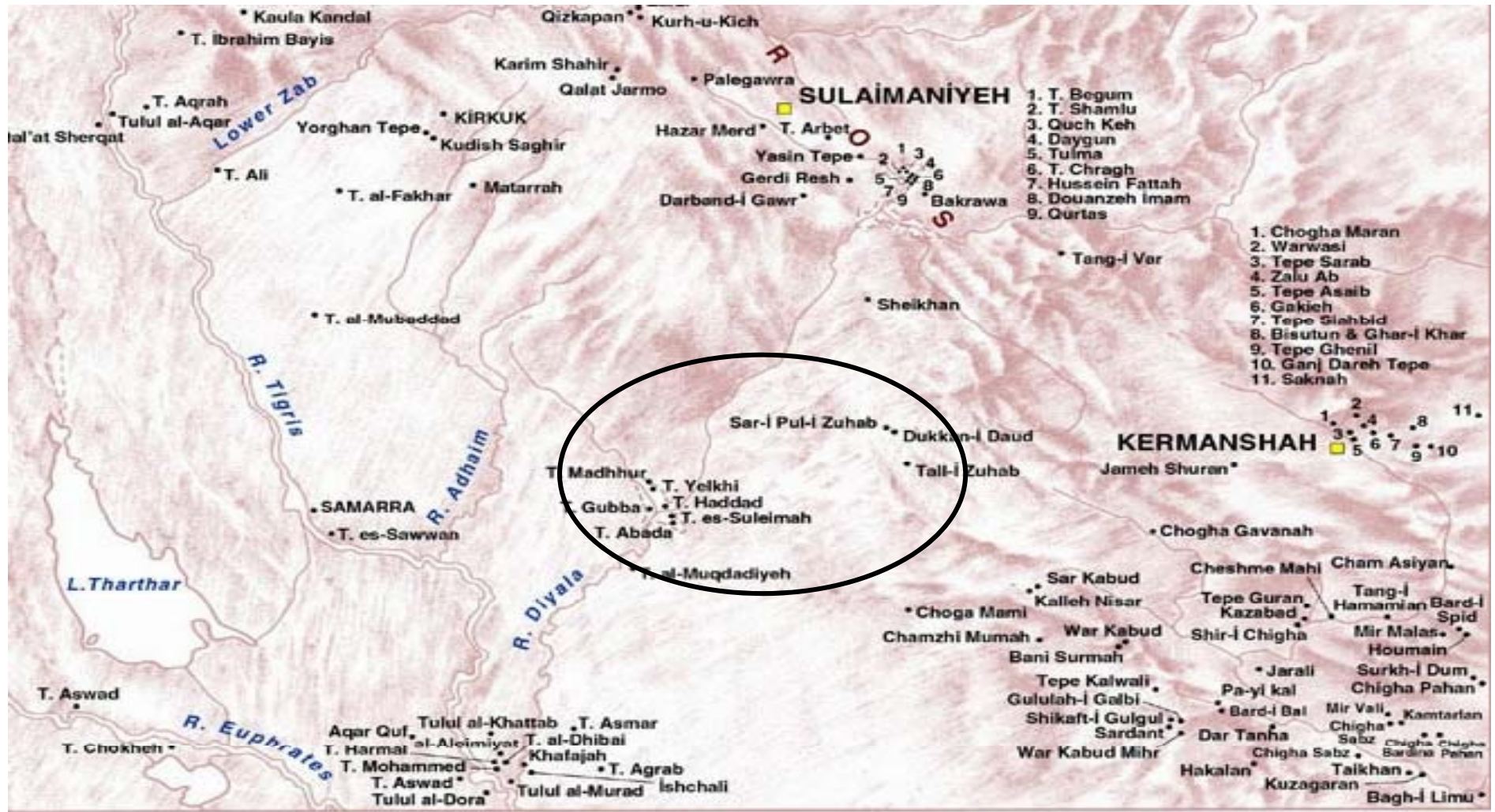




Diyala Bölgesi

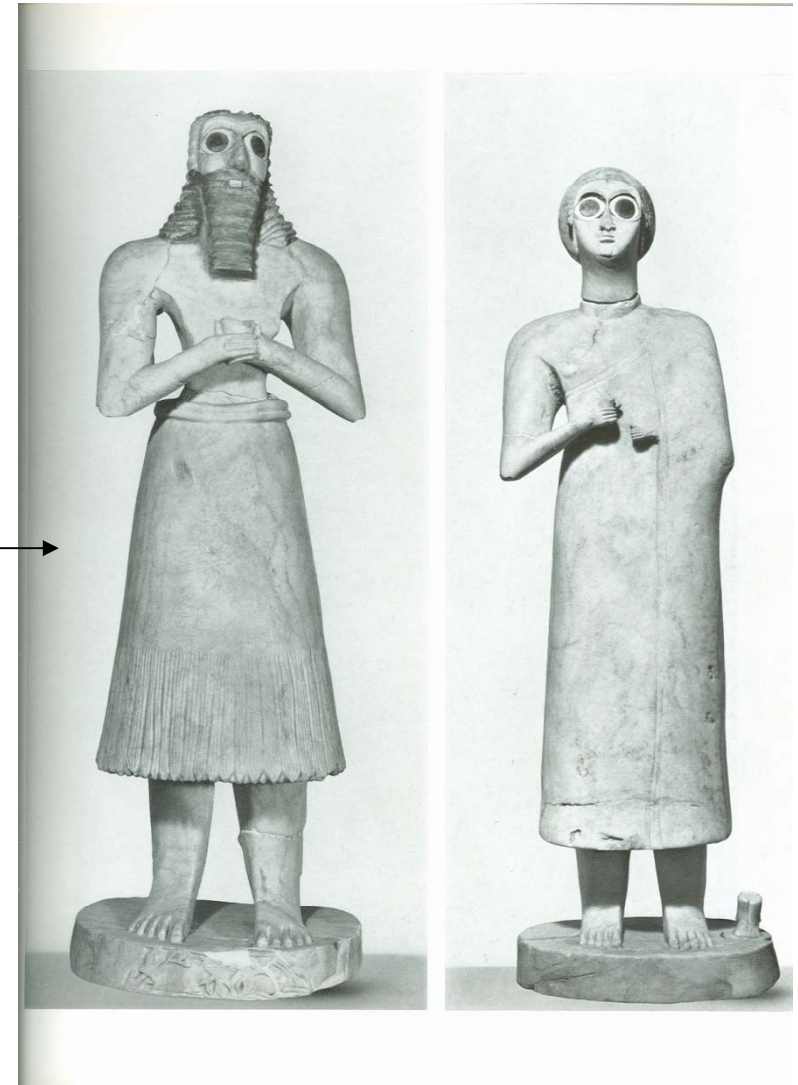
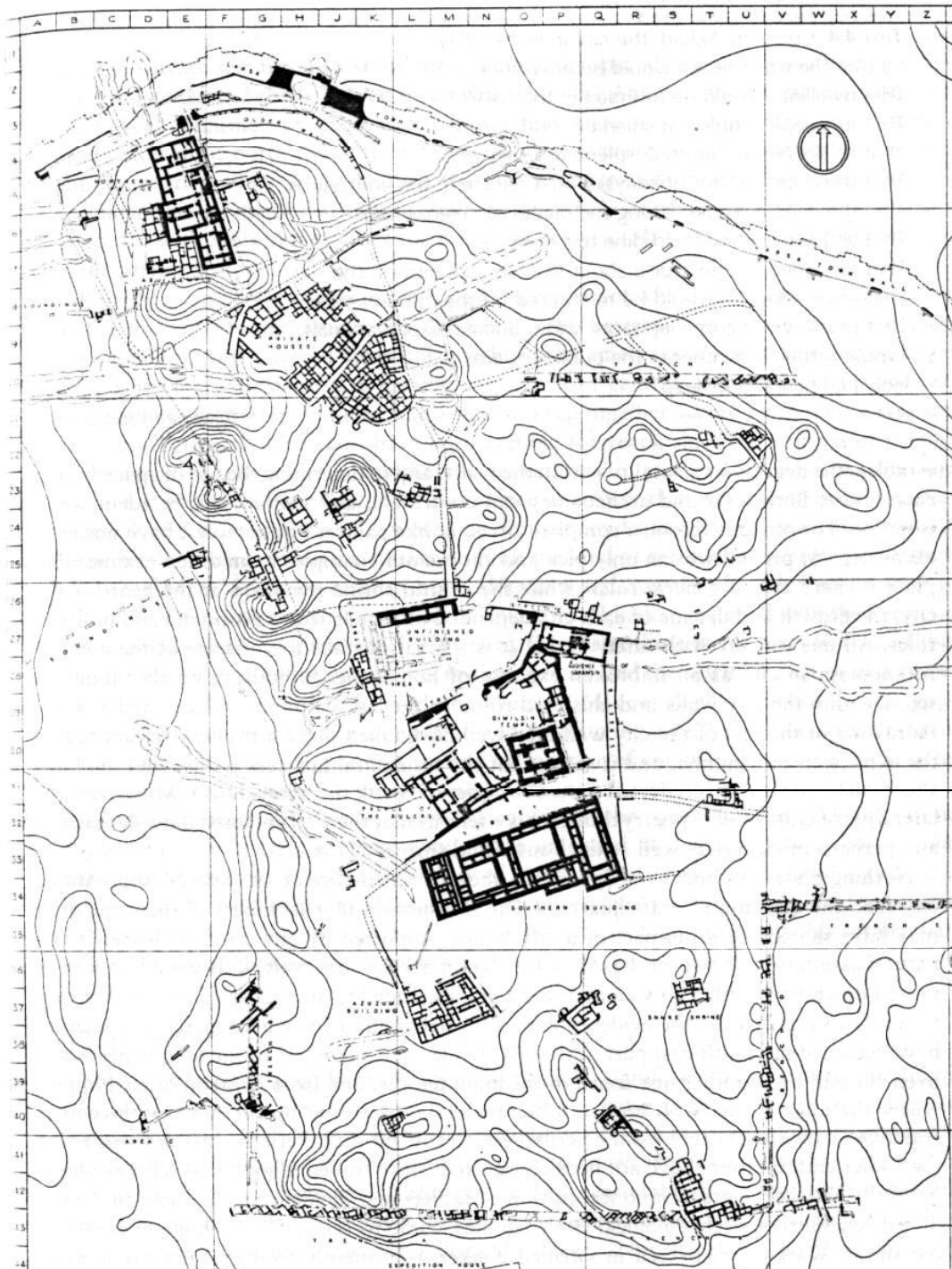
Diyala Bölgesi

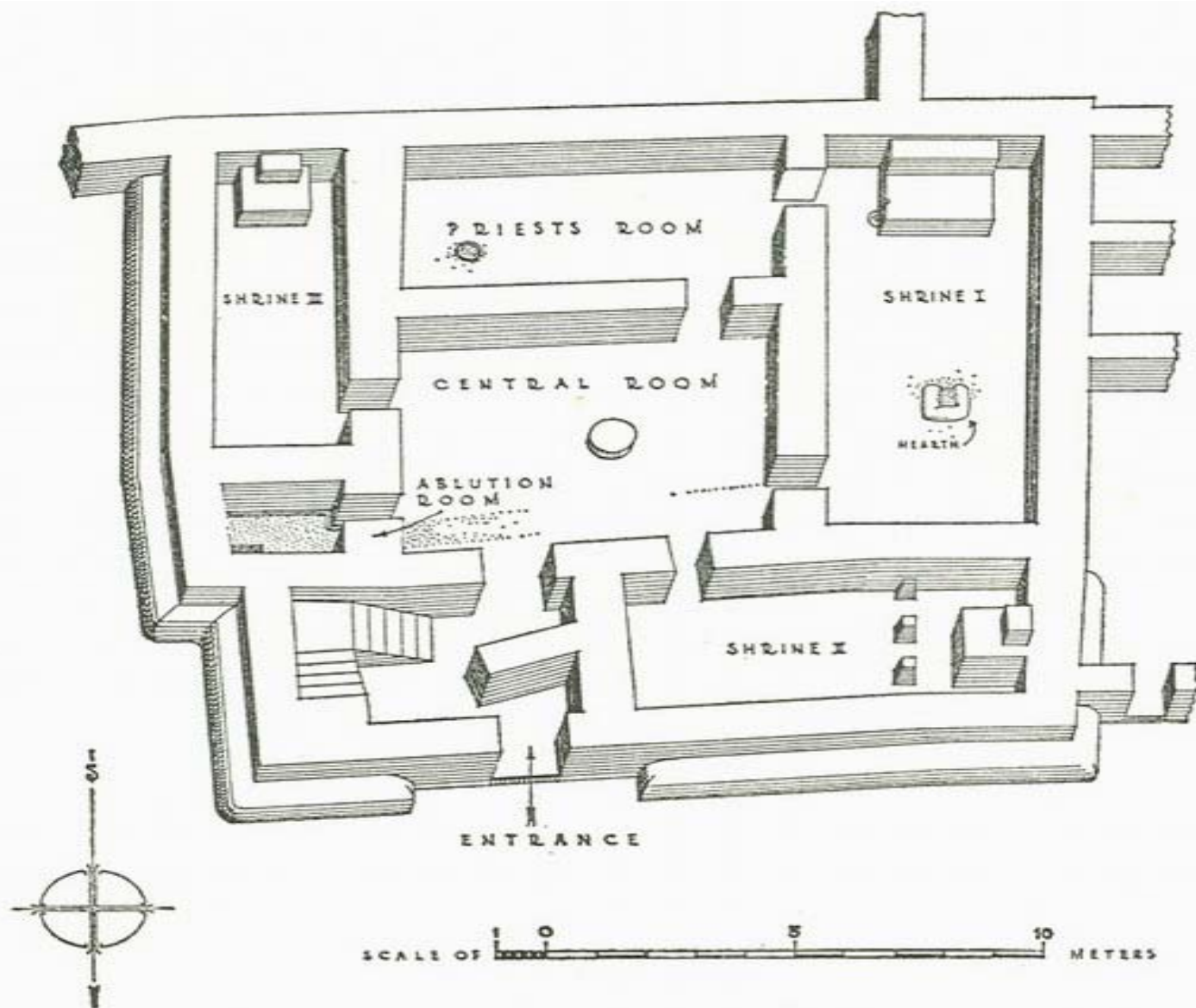
- Chicago Üniversitesi Oriental Enstitüsü adına **Henry Frankfort** Başkanlığında,
- **Thorkild Jacobsen** (Epigraf)
- **Seton Lloyd, Gordon Loud, Pinhas Delougaz** yer aldı.
- Kazılar özellikle **Tell Asmar, Tell Agrab, Hafaci ve Ishchali**'de sürdürüldü.



Hamrin Baraji Kurtarma Kazıları

Tell Asmar / Eshnunna





16 Tell Asmar, Abu-Tempel der Mesilim-Periode (sog. Square Temple), Isometrische Projektion. – Nach P. Delougaz u. S. Lloyd, OIP LVIII, 1942



24b

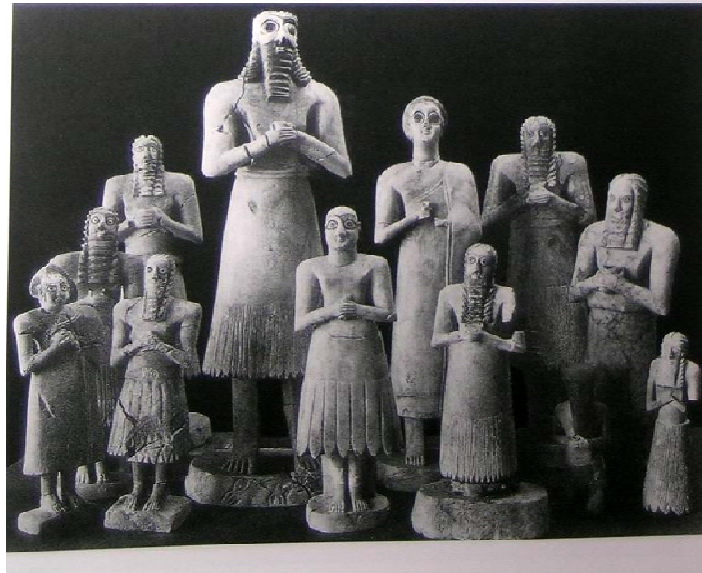


Fig. 25. Hoard of dedicatory statues. Abu temp
Tell Asmar, Early Dynastic I-II, ca. 2900-2550.

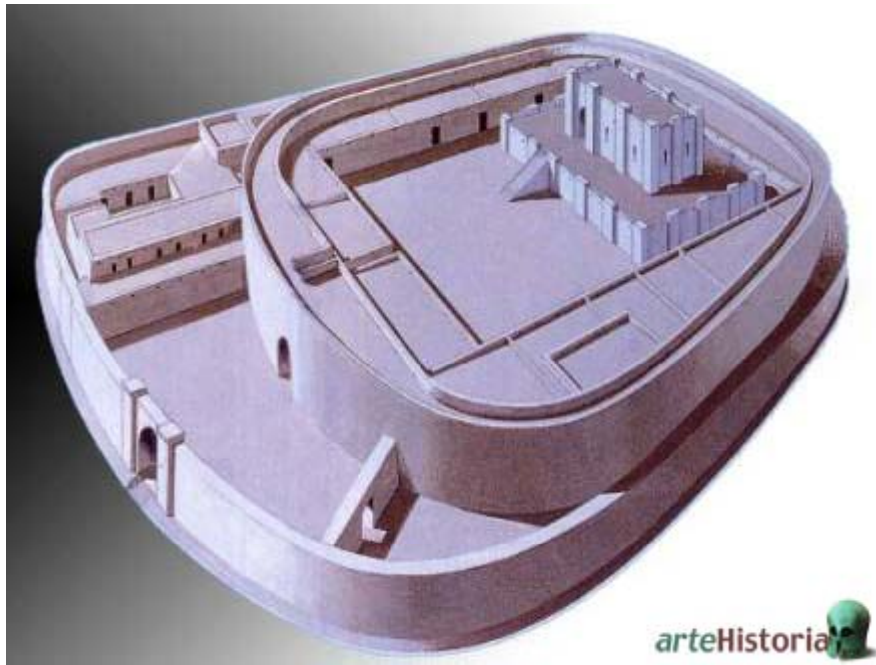


Tell Agrab



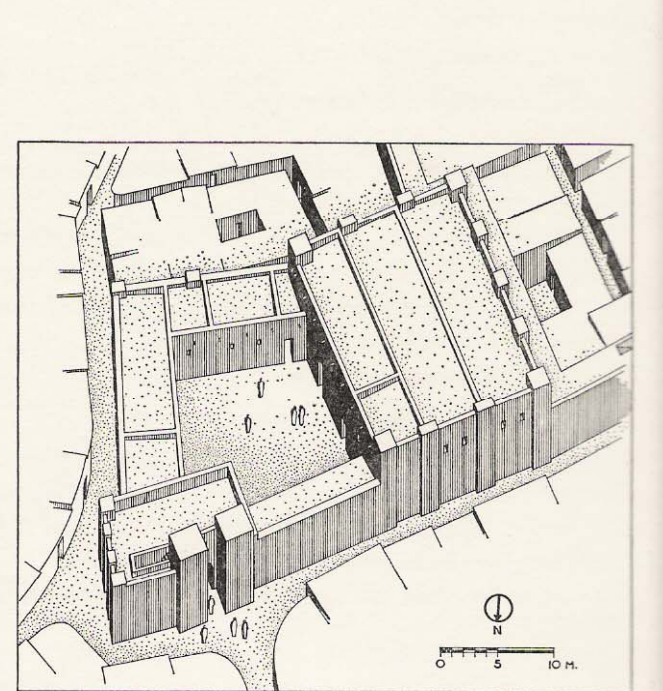
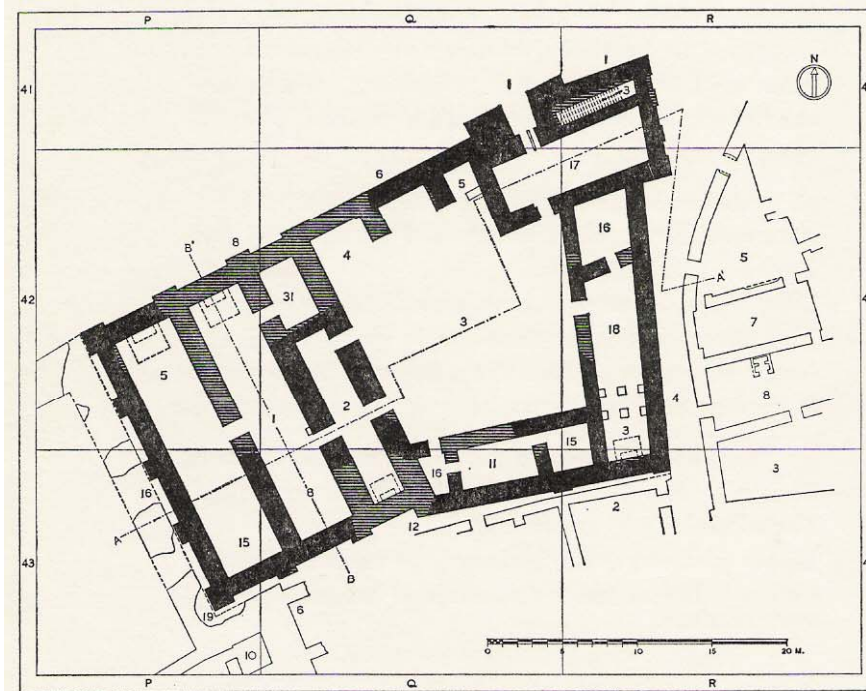
Tell Agrab





Oval mabedi

Sin Mabedi



Hafaci



