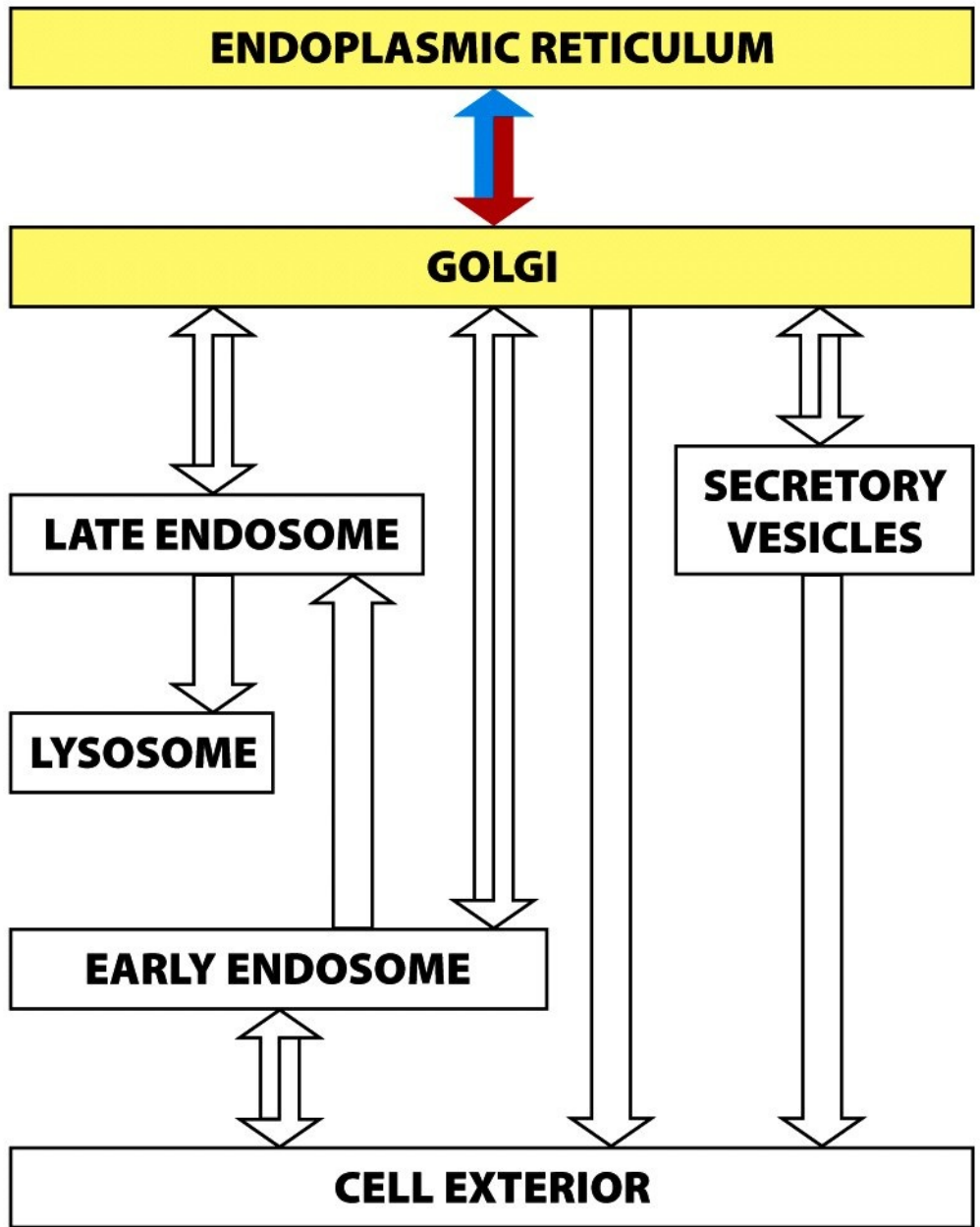


Figure 13-19b *Molecular Biology of the Cell* (© Garland Science 2008)



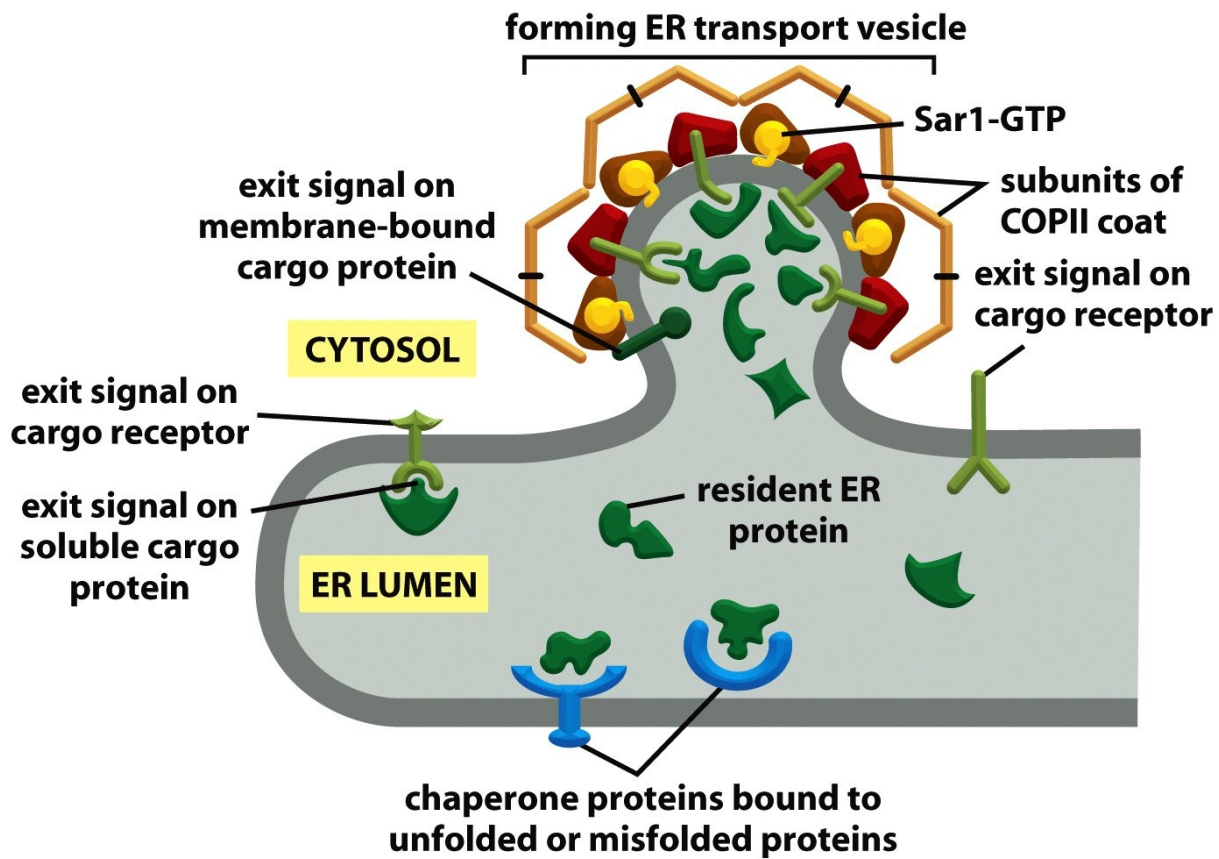


Figure 13-20 *Molecular Biology of the Cell* (© Garland Science 2008)

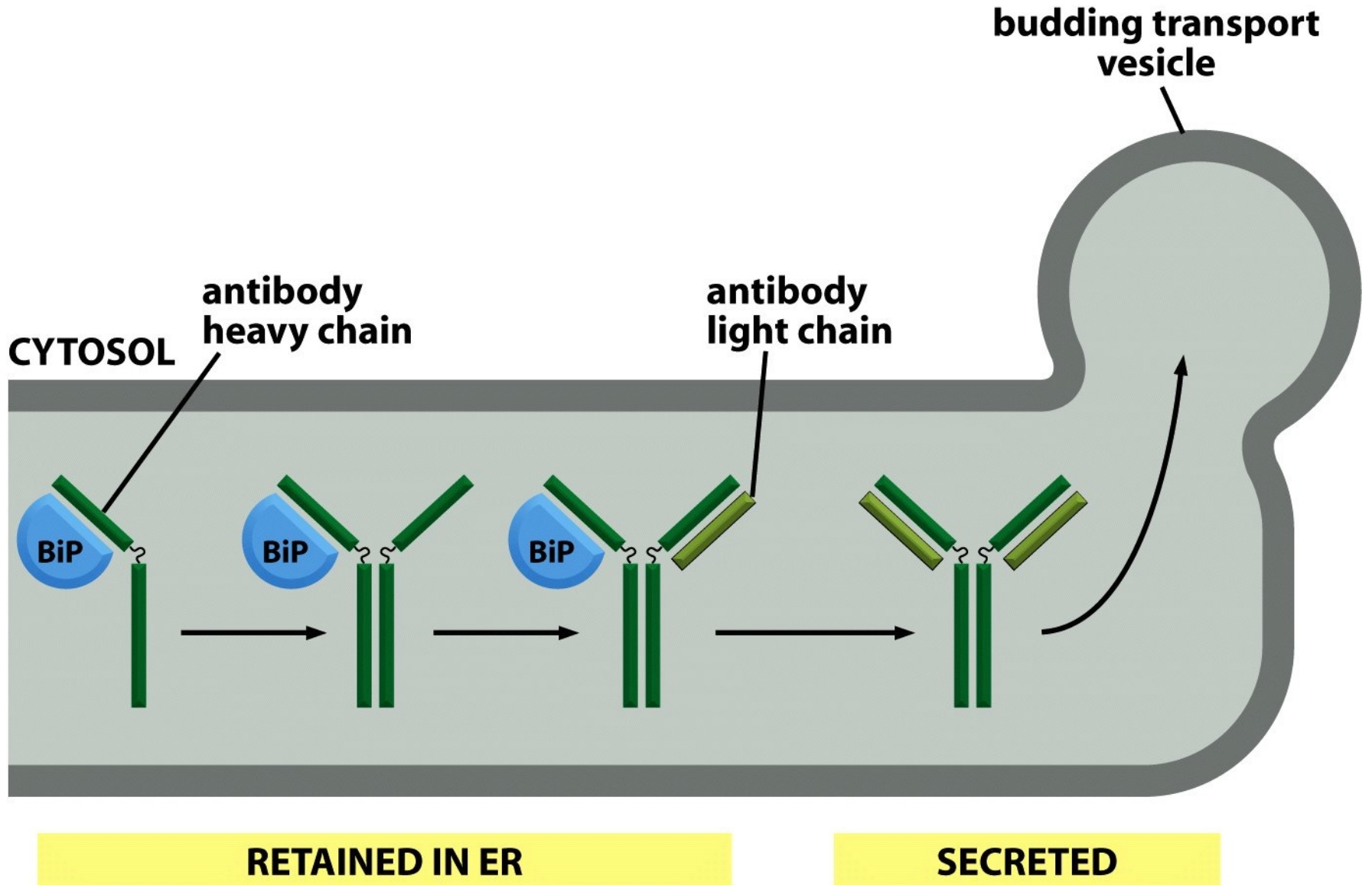


Figure 13-21 *Molecular Biology of the Cell* (© Garland Science 2008)

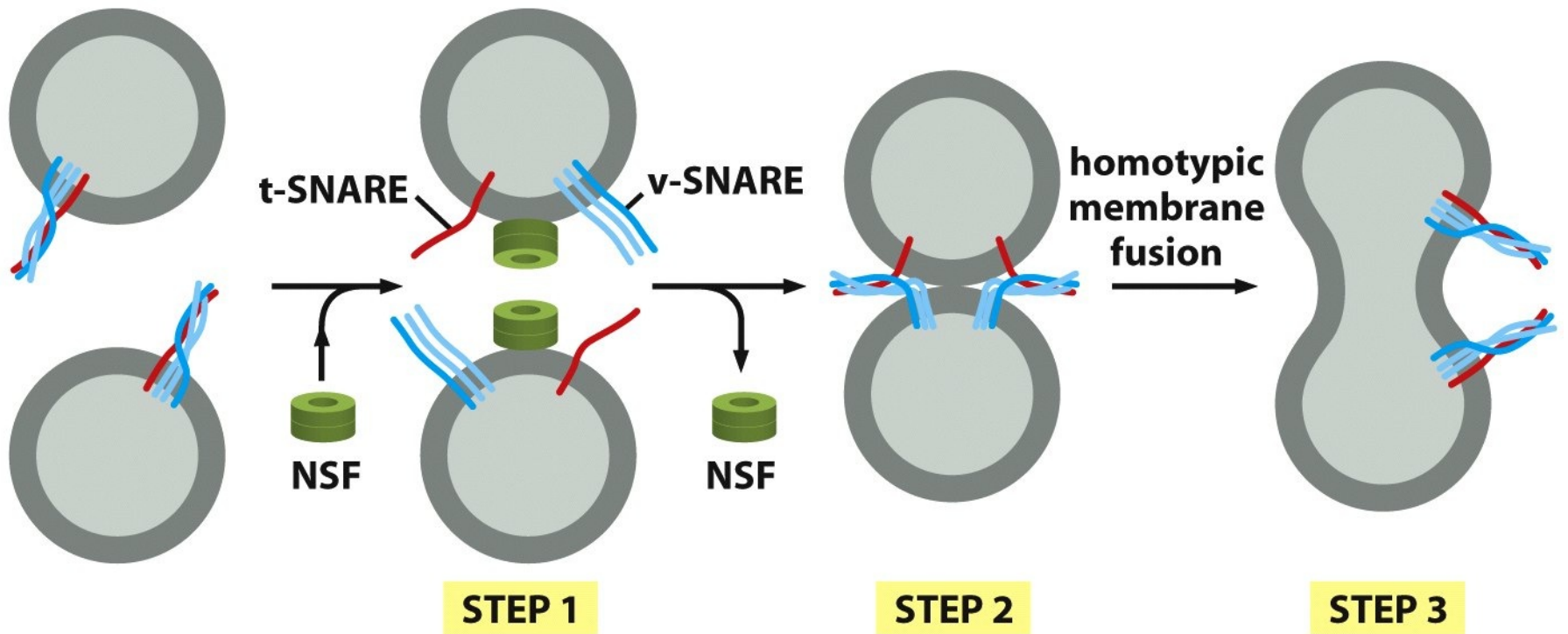


Figure 13-22 *Molecular Biology of the Cell* (© Garland Science 2008)

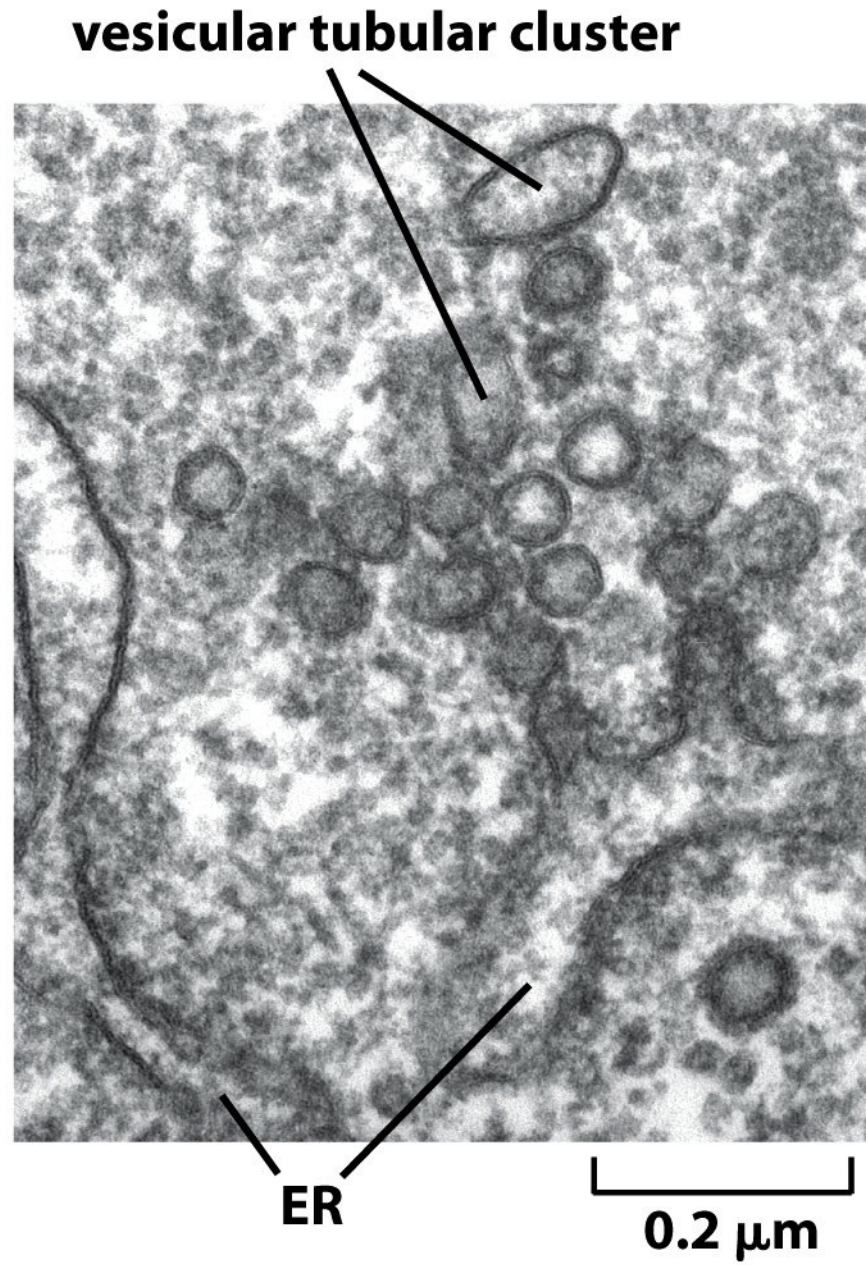


Figure 13-23a *Molecular Biology of the Cell* (© Garland Science 2008)

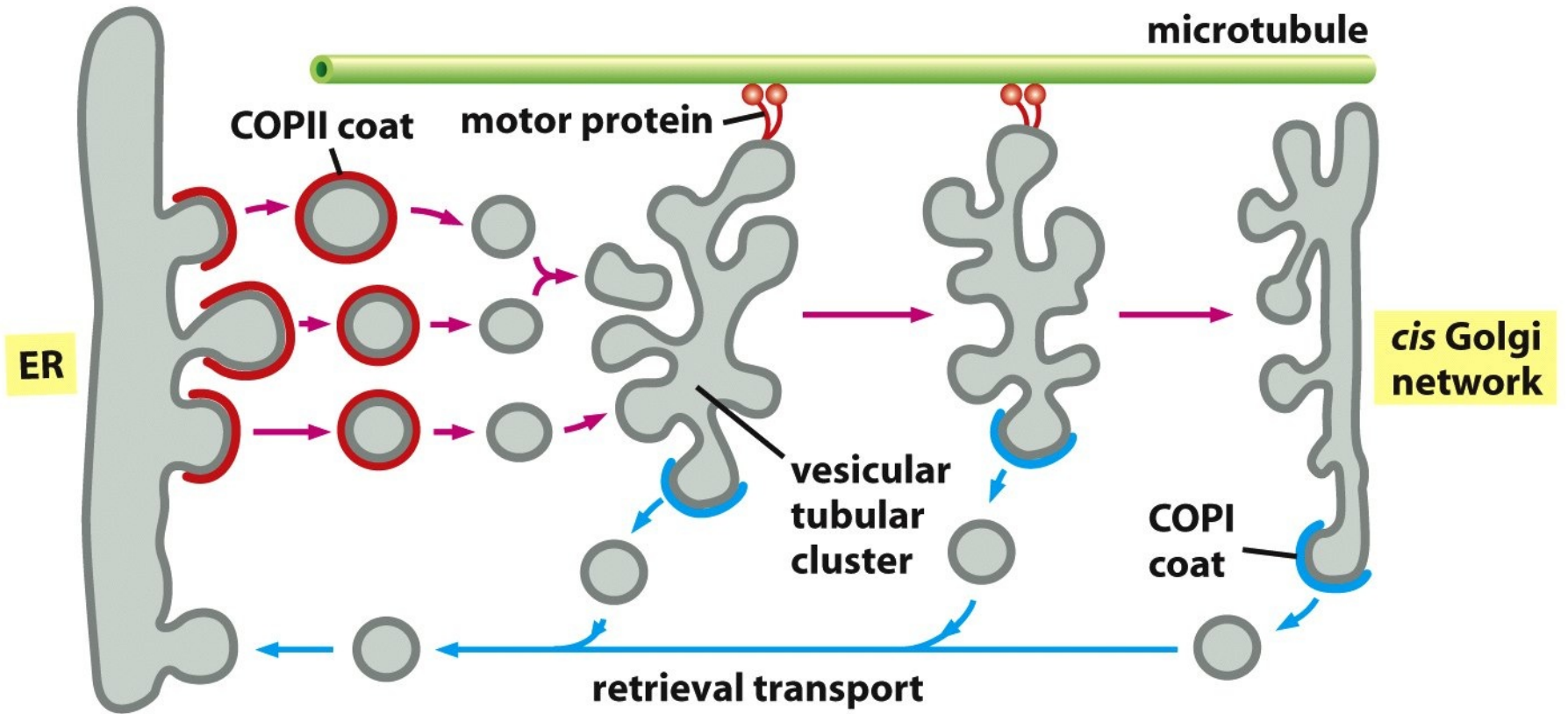


Figure 13-23b *Molecular Biology of the Cell* (© Garland Science 2008)

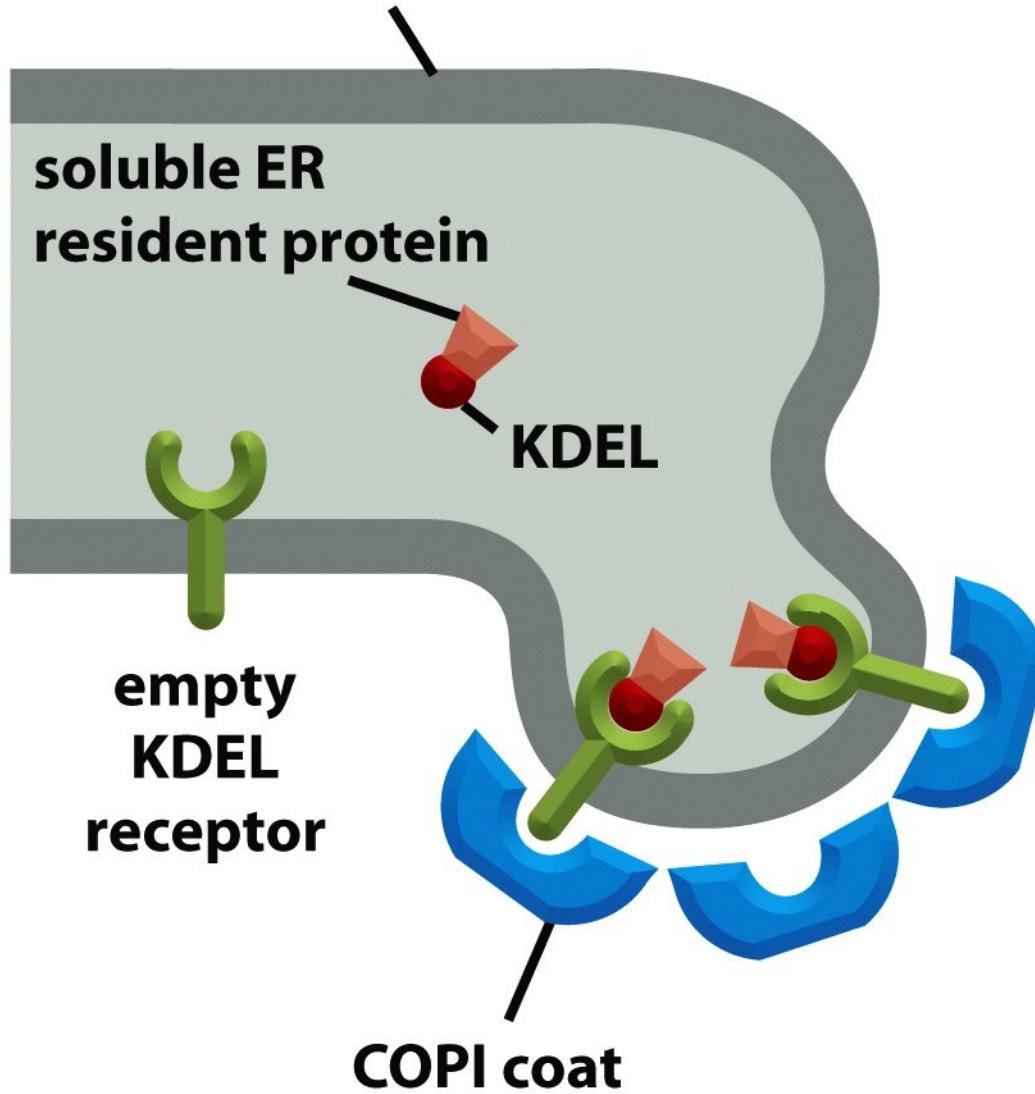
**vesicular tubular cluster
or Golgi apparatus**

**soluble ER
resident protein**

KDEL

**empty
KDEL
receptor**

COPI coat



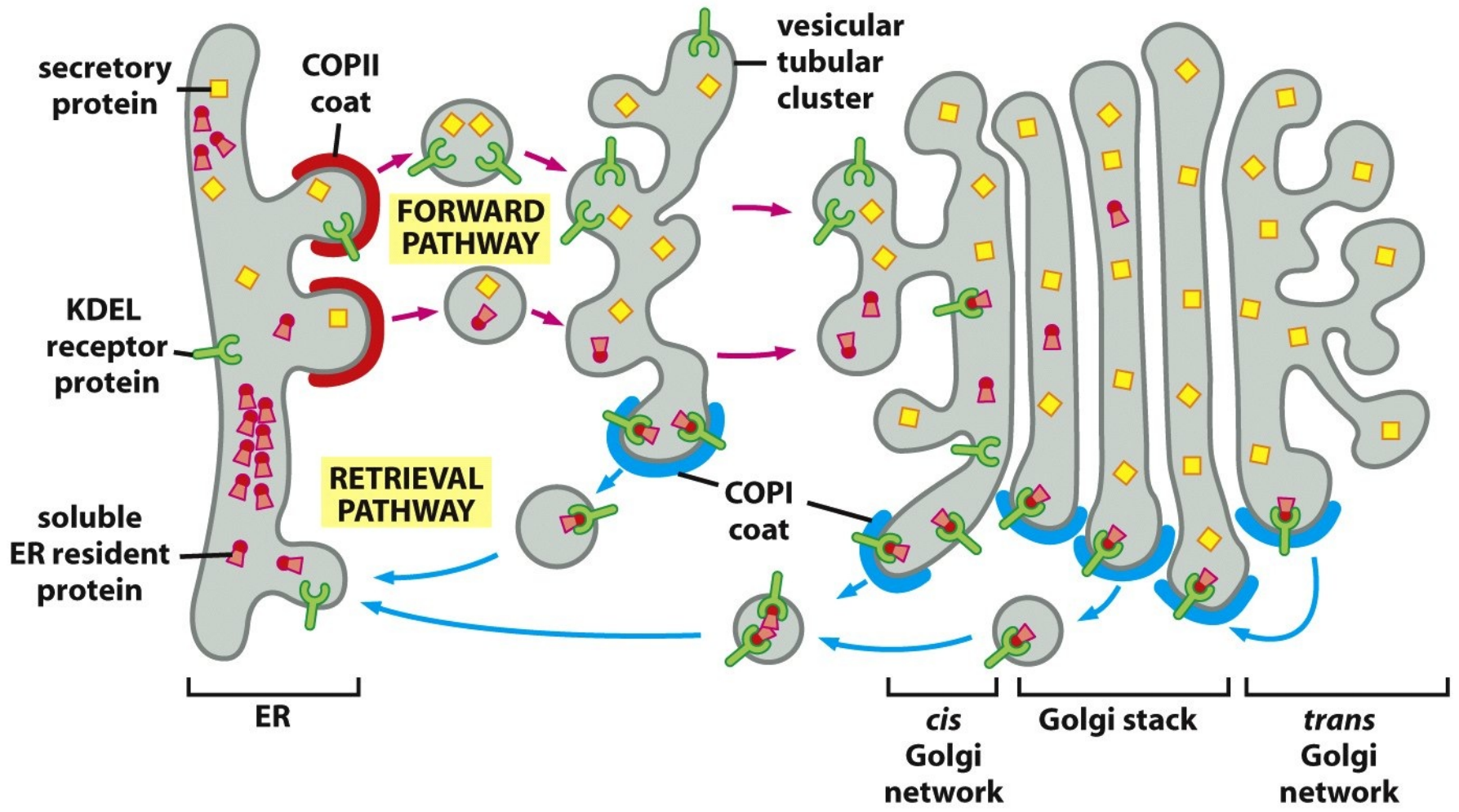


Figure 13-24b *Molecular Biology of the Cell* (© Garland Science 2008)

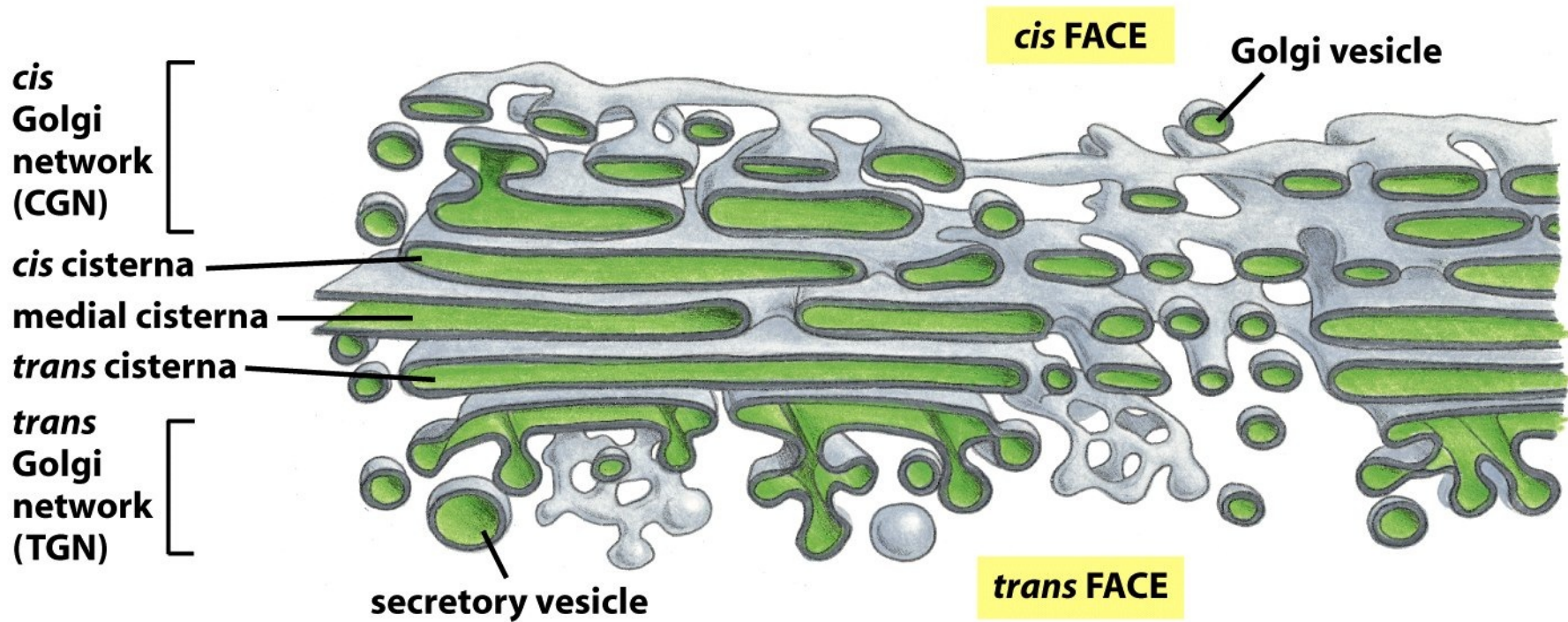


Figure 13-25a *Molecular Biology of the Cell* (© Garland Science 2008)

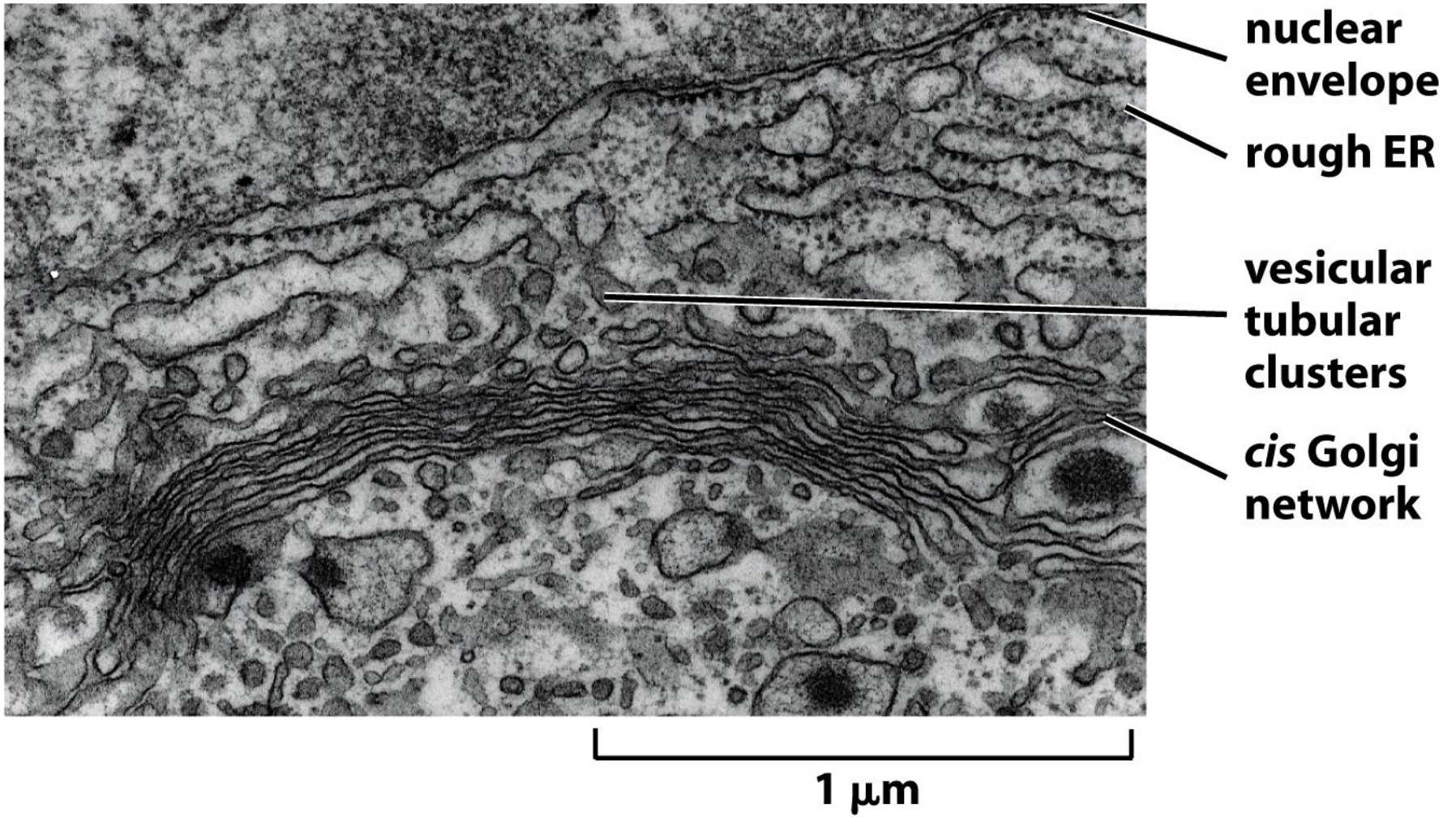
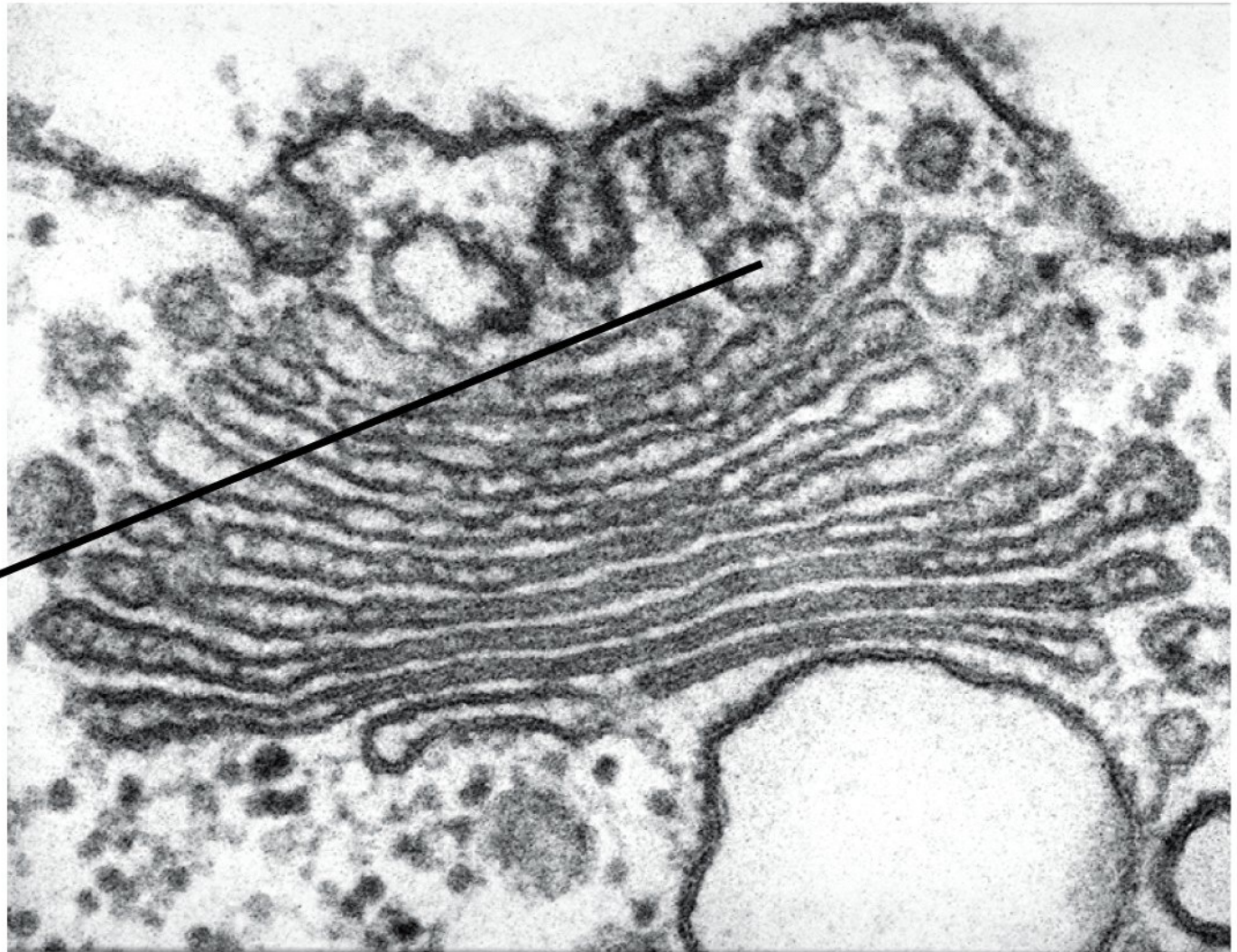


Figure 13-25b *Molecular Biology of the Cell* (© Garland Science 2008)

***cis* Golgi network**



200 nm

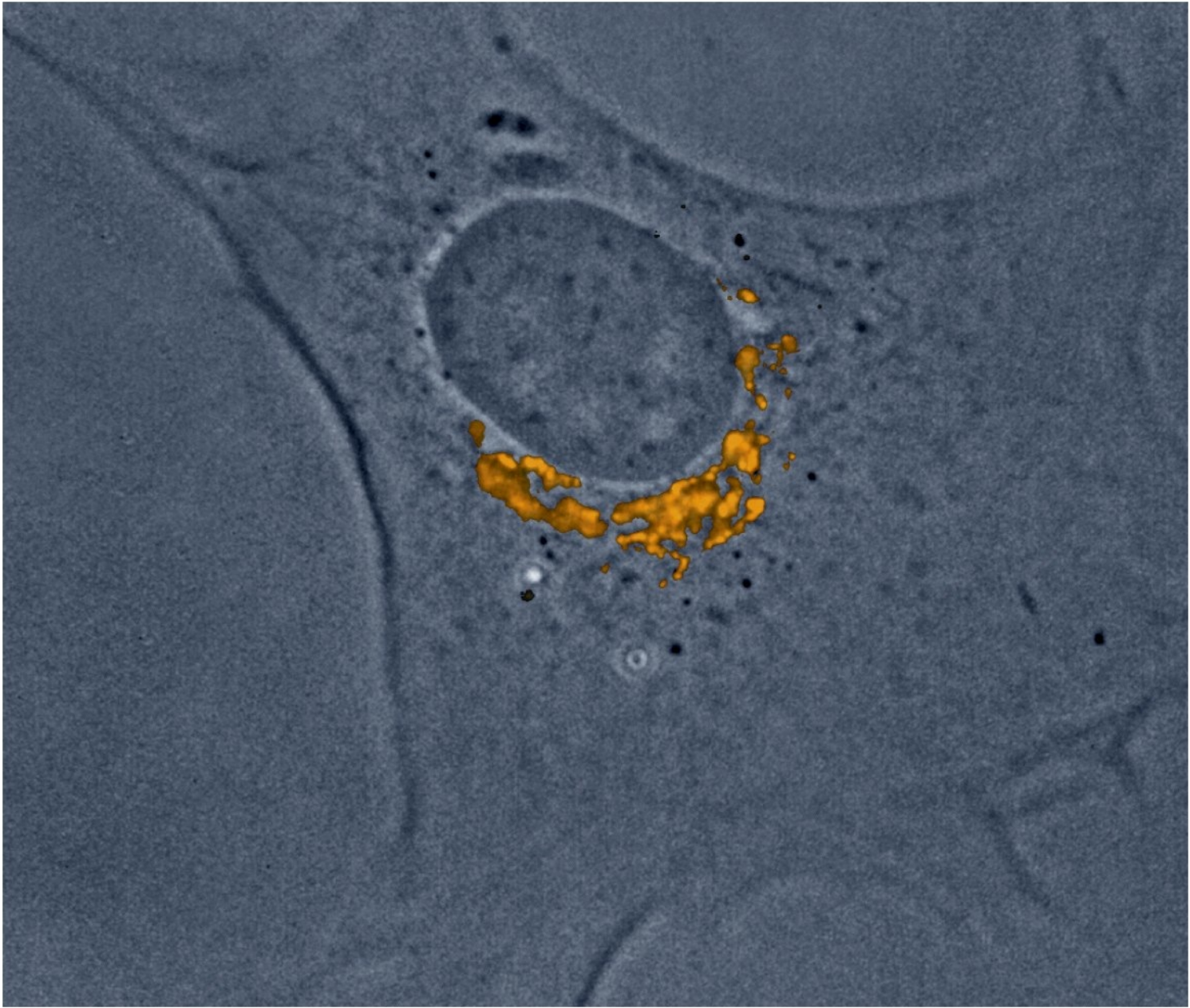


Figure 13-26a *Molecular Biology of the Cell* (© Garland Science 2008)

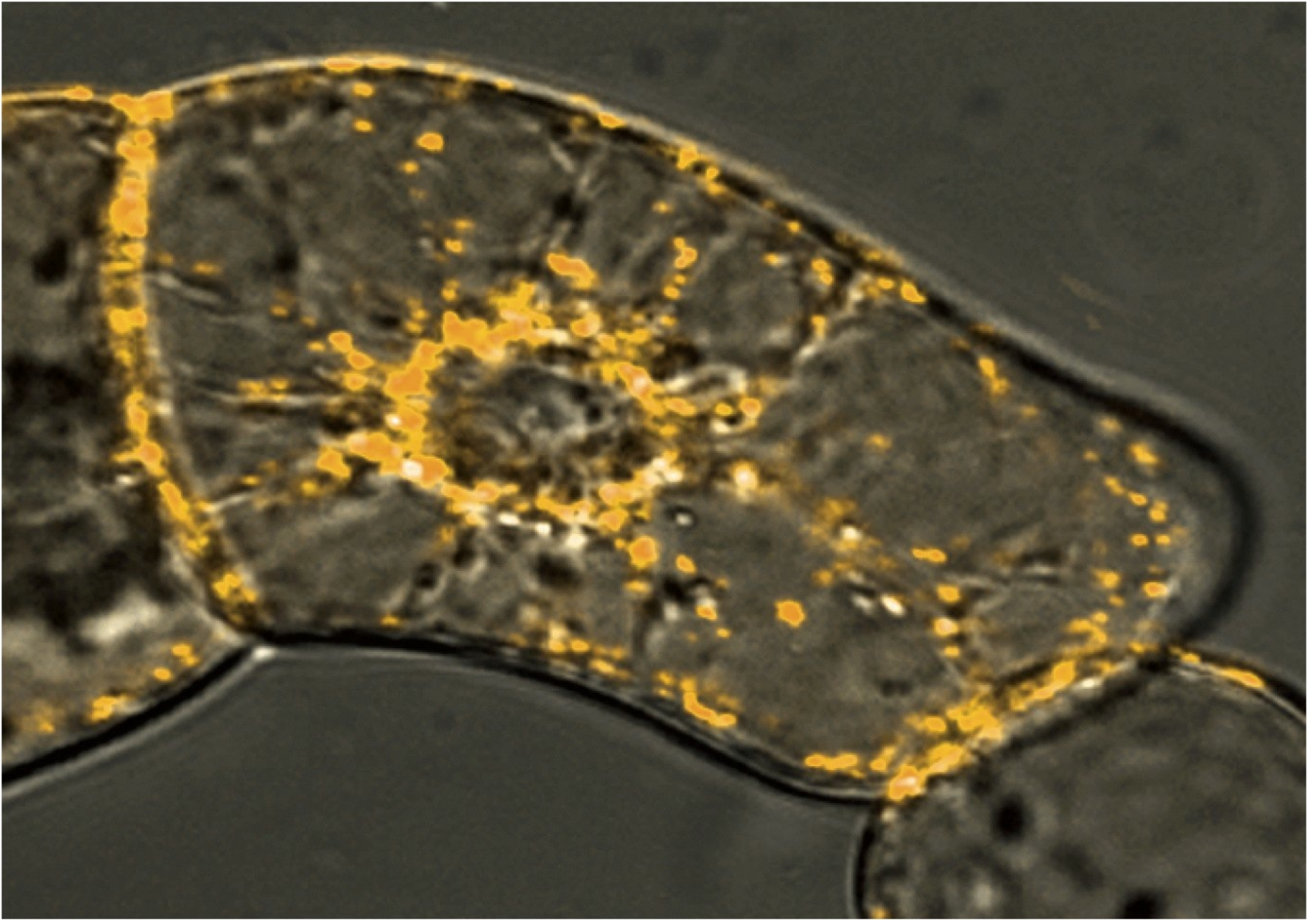
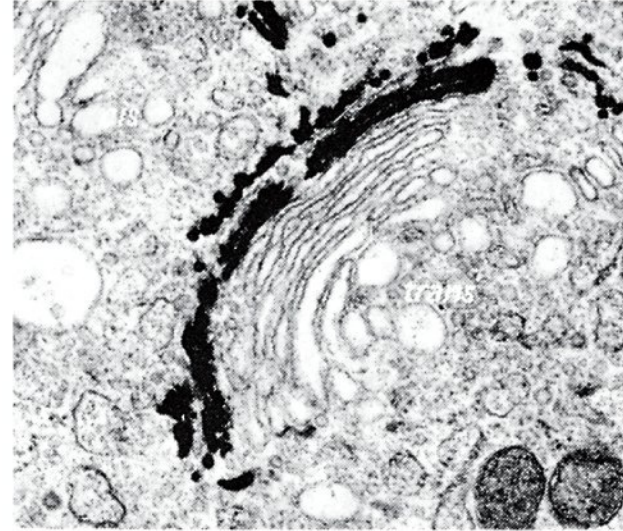


Figure 13-26b *Molecular Biology of the Cell* (© Garland Science 2008)



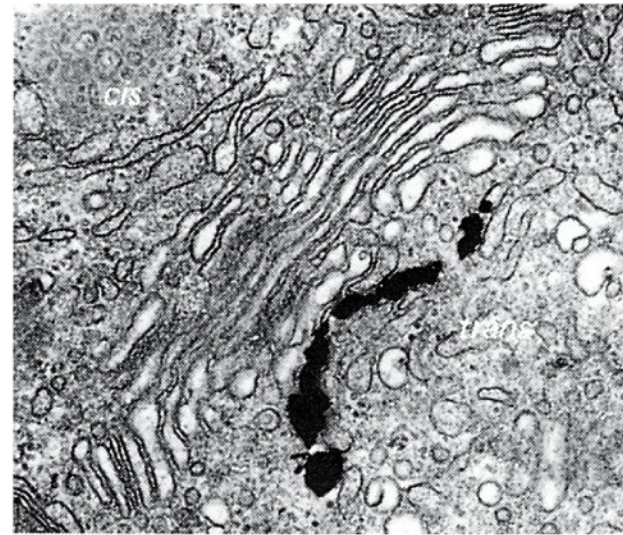
(A)



(B)



(C)



(D)

1 μm

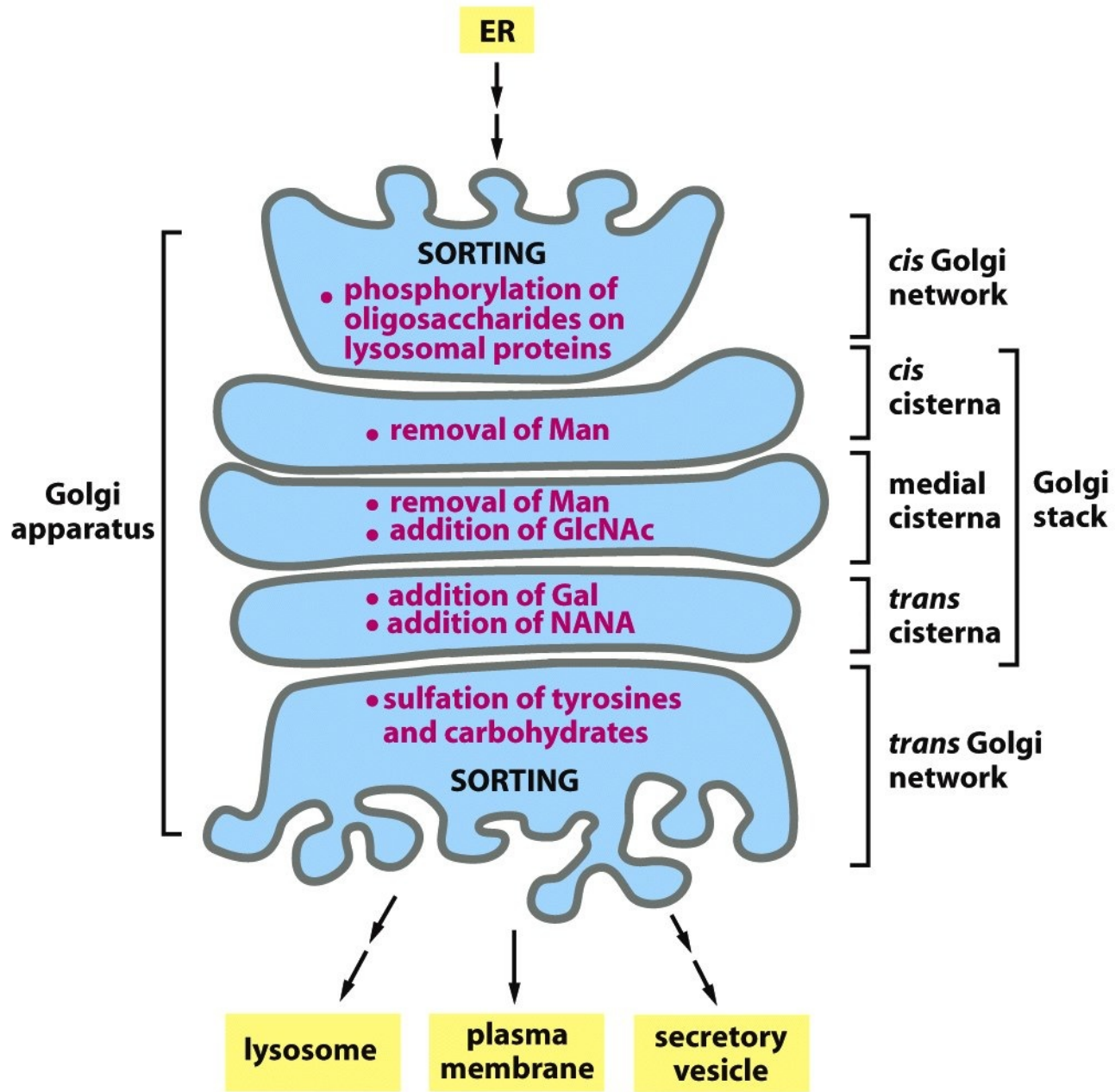


Figure 13-28 *Molecular Biology of the Cell* (© Garland Science 2008)

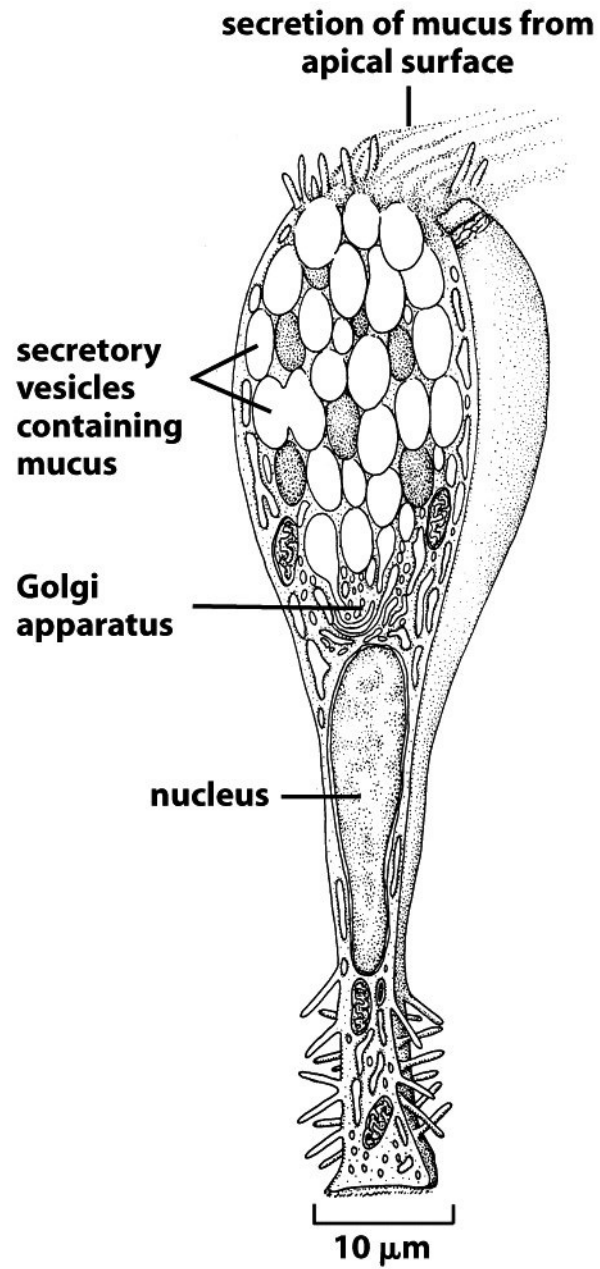
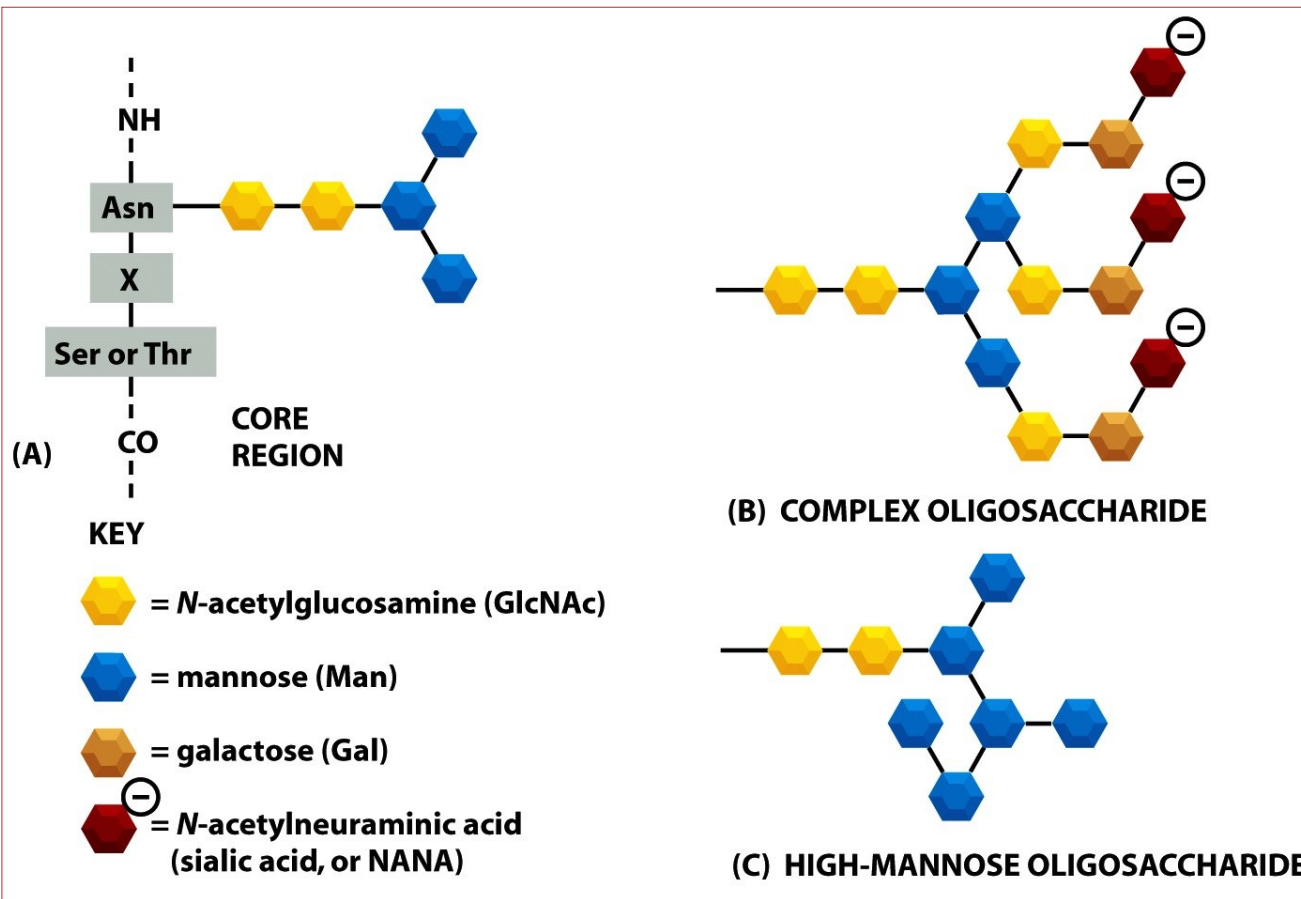
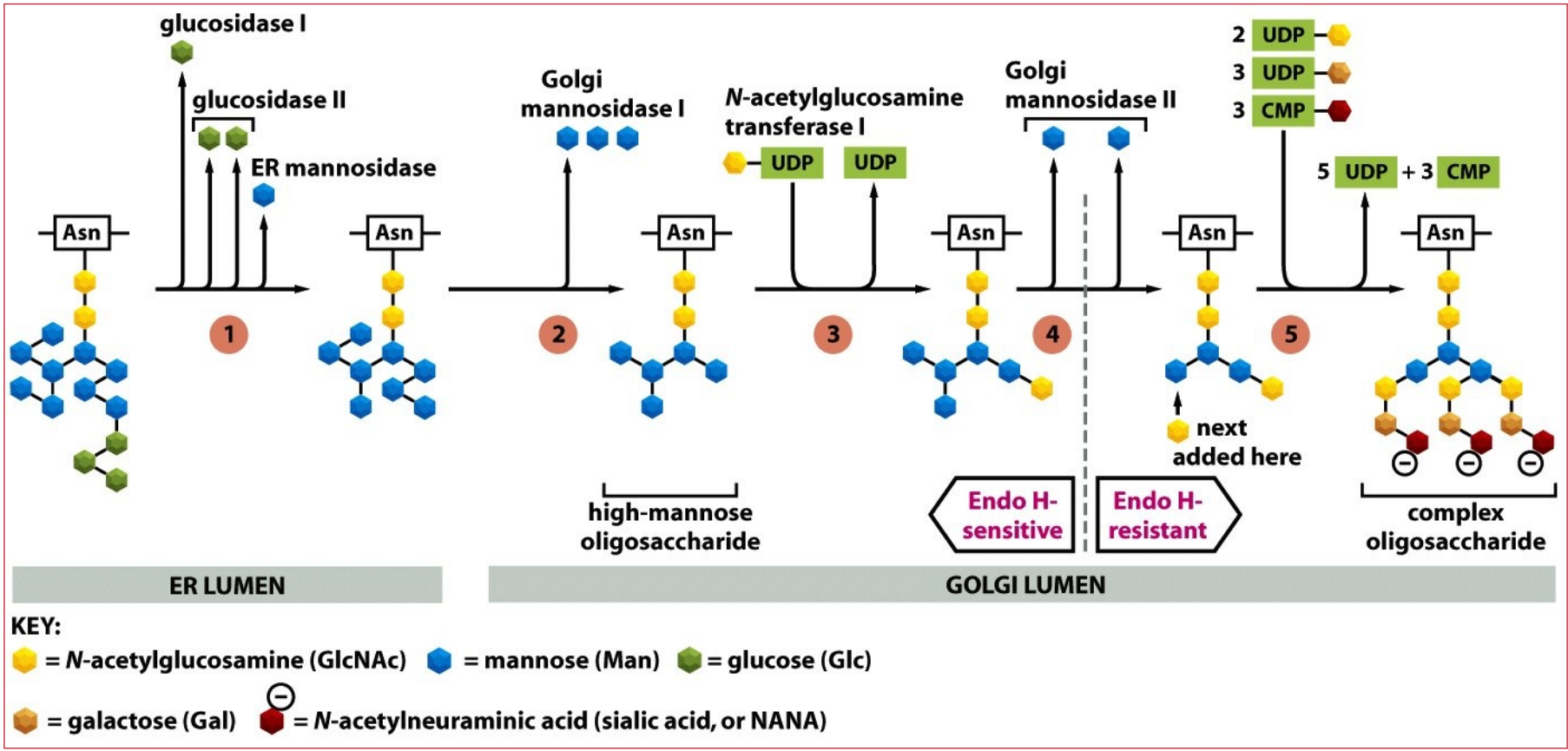


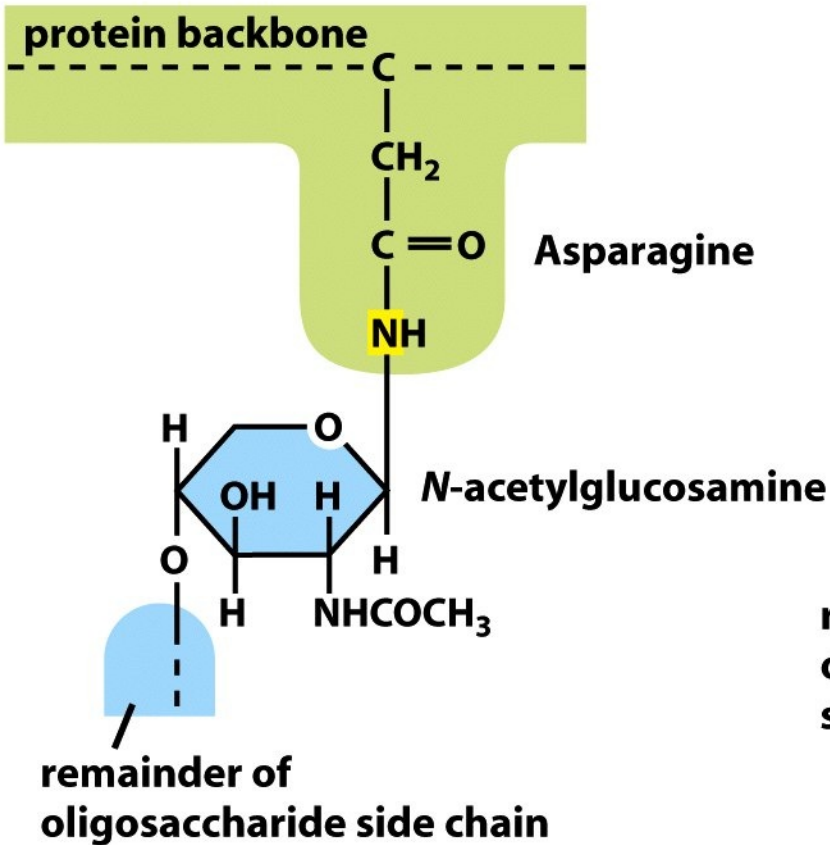
Figure 13-29 *Molecular Biology of the Cell* (© Garland Science 2008)



- ER’da yapılan N-Glikozilasyonda, karmaşık oligosakkaritlerde ve yüksek mannozlu oligosakkaritlerde çekirdek bölge aynıdır.



N-LINKED GLYCOSYLATION



O-LINKED GLYCOSYLATION

