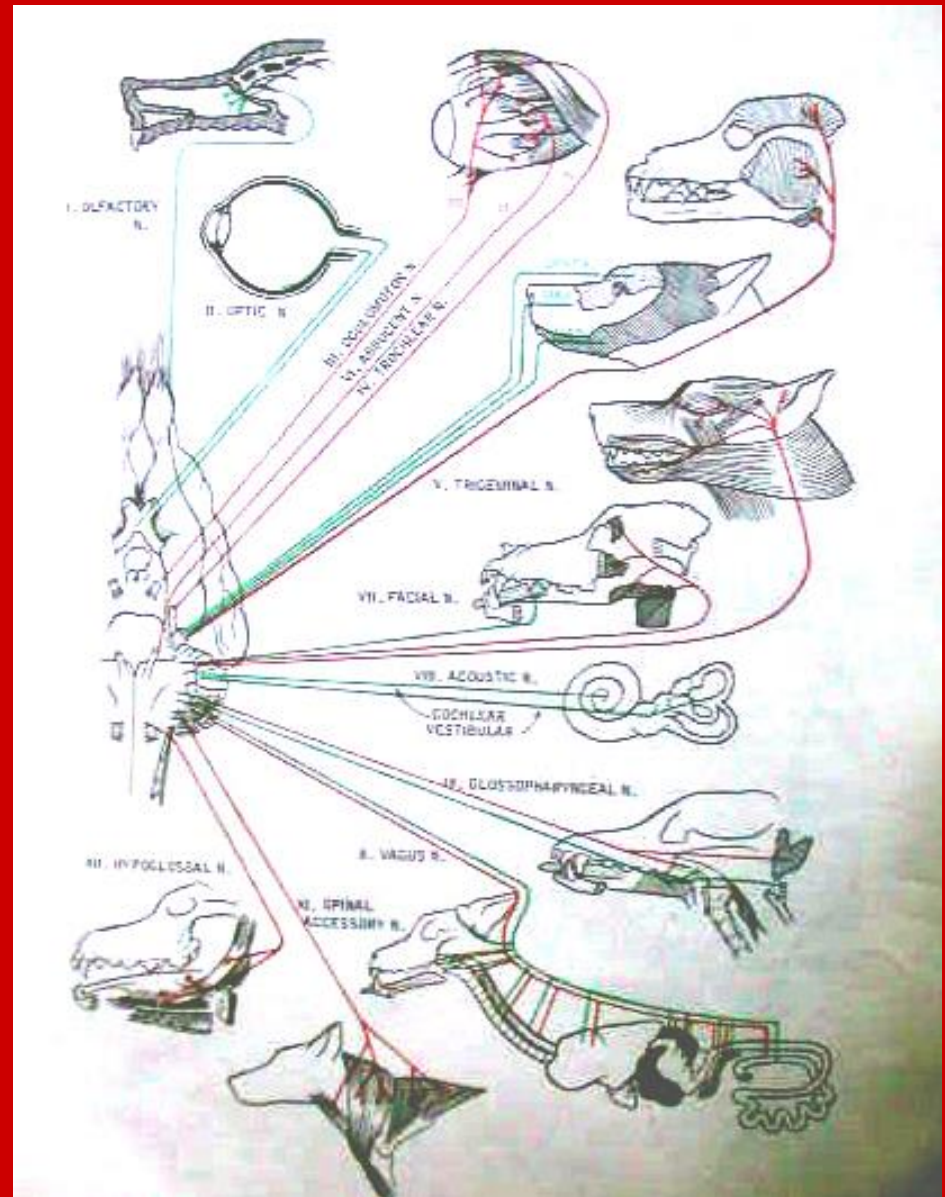
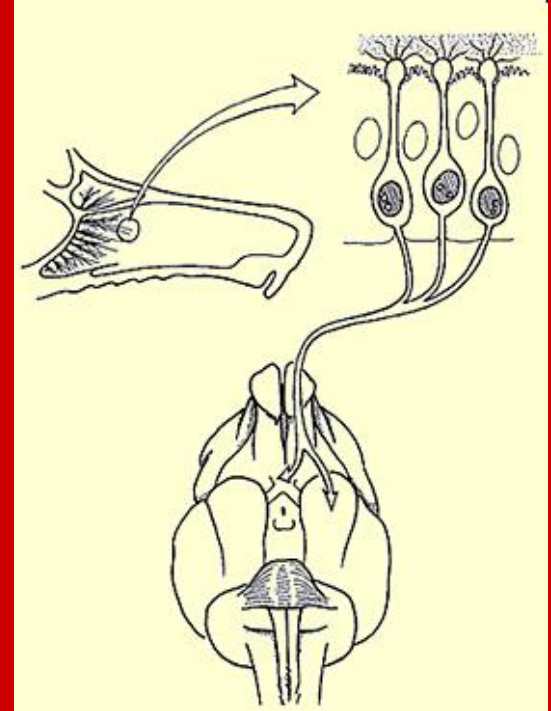


KRANİYAL SİNİRLER



KS I: N. Olfaktorius:

Hücre gövdeleri kaudal nazal kavitededir etmoidin lamina kripriformisinden kranial kaviteye girer ve bulbus olfaktoriusta sinaps yapar



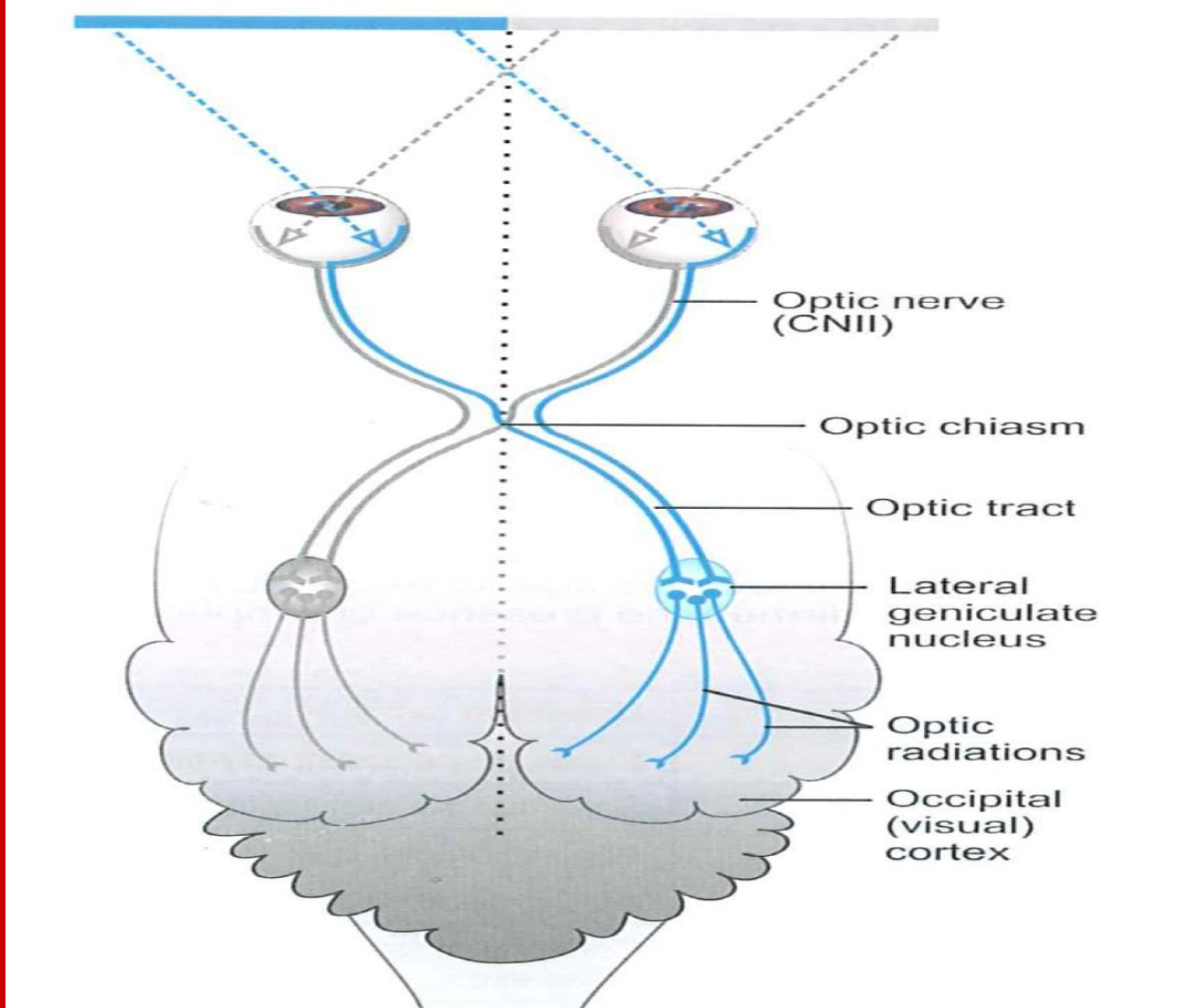
Alkol, benzol, ksilol

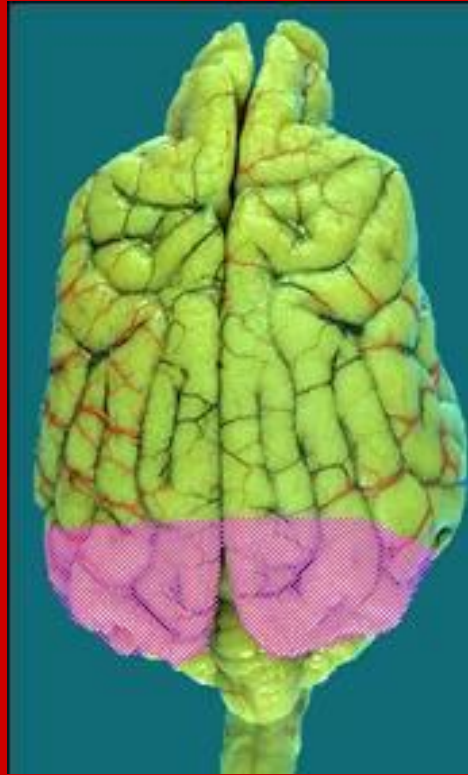


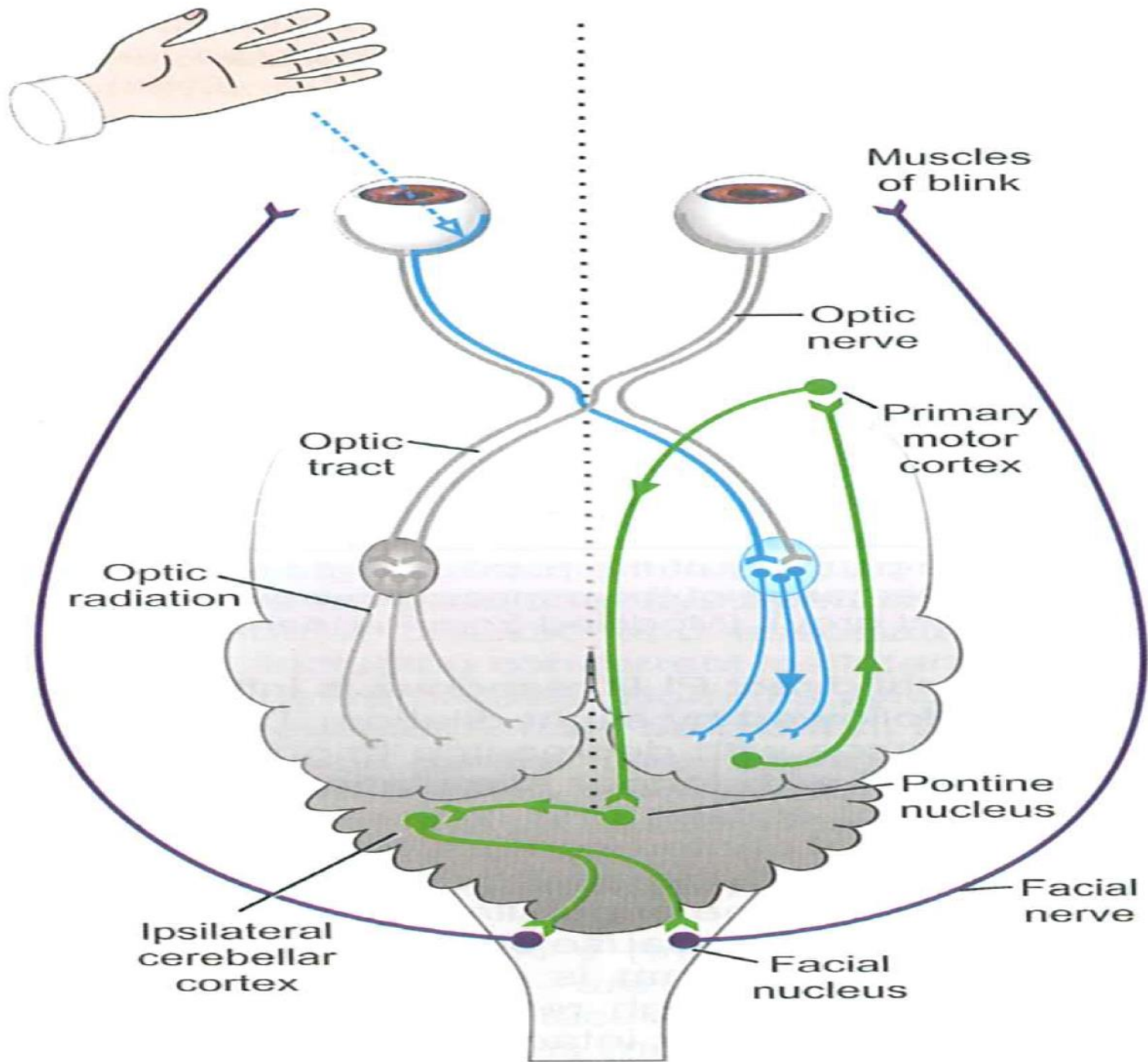
KS II. N. Optiküs

Hücre gövdeleri
retinada uzantıları
optik yolları oluşturur

Görme, pupillar ışık refleksi için sensorik sinirdir.





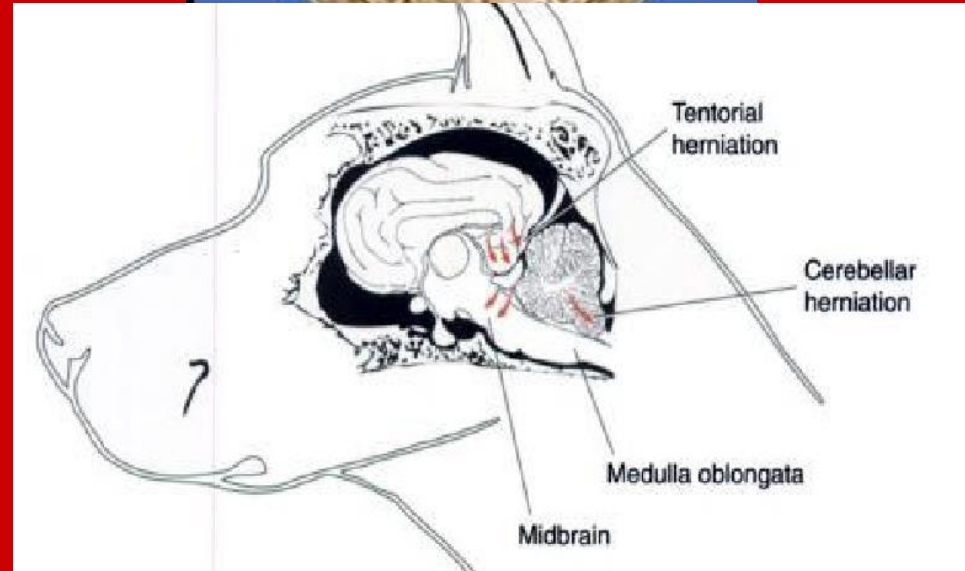


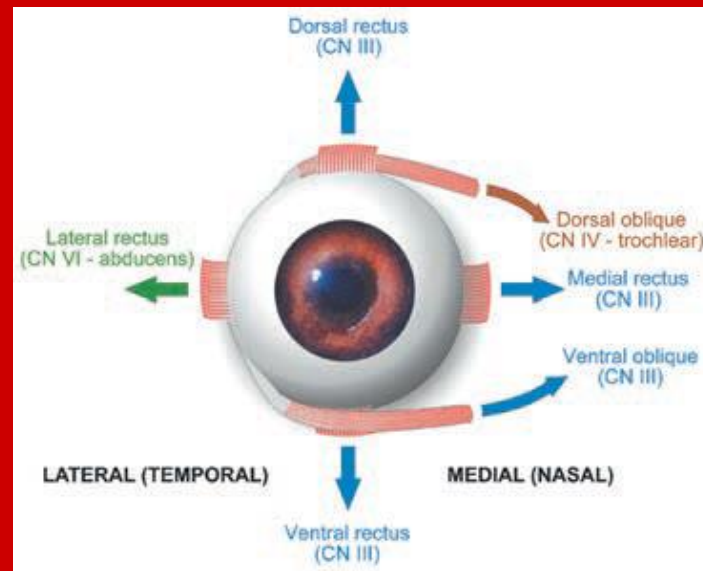
KS III. N. Okulomotorius

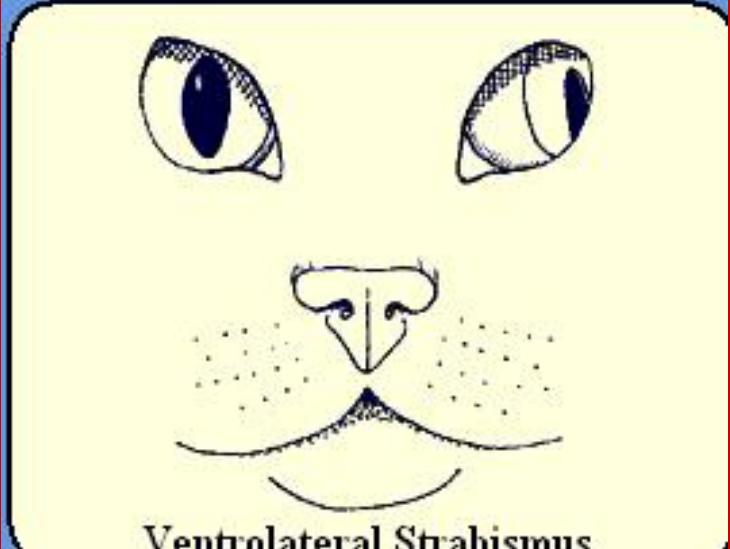
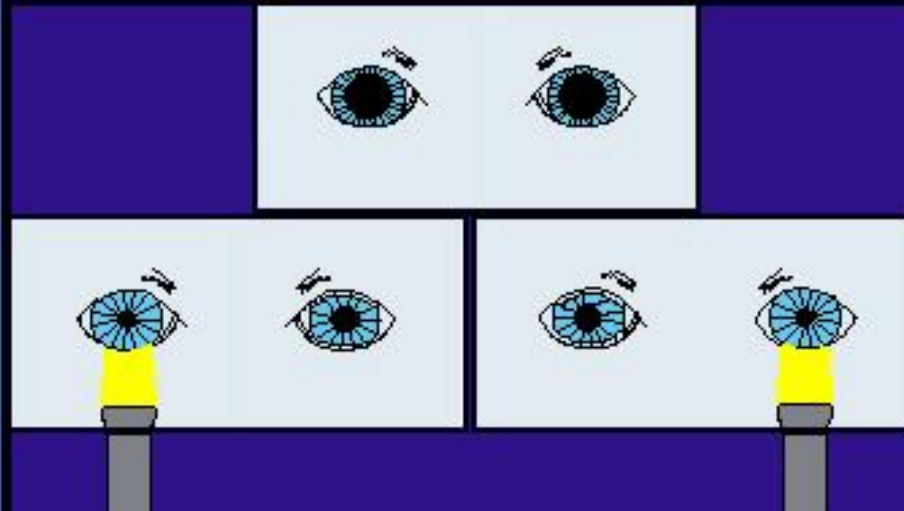
Pupillar daralma için parasempatik ve motor lifler taşır. Dorsal - ventral - medial ekstraokular rektus kaslarının motorik işlevlerini, üst göz kapağının M. Levator palpebrae superioris kasının innervasyonunu sağlar.

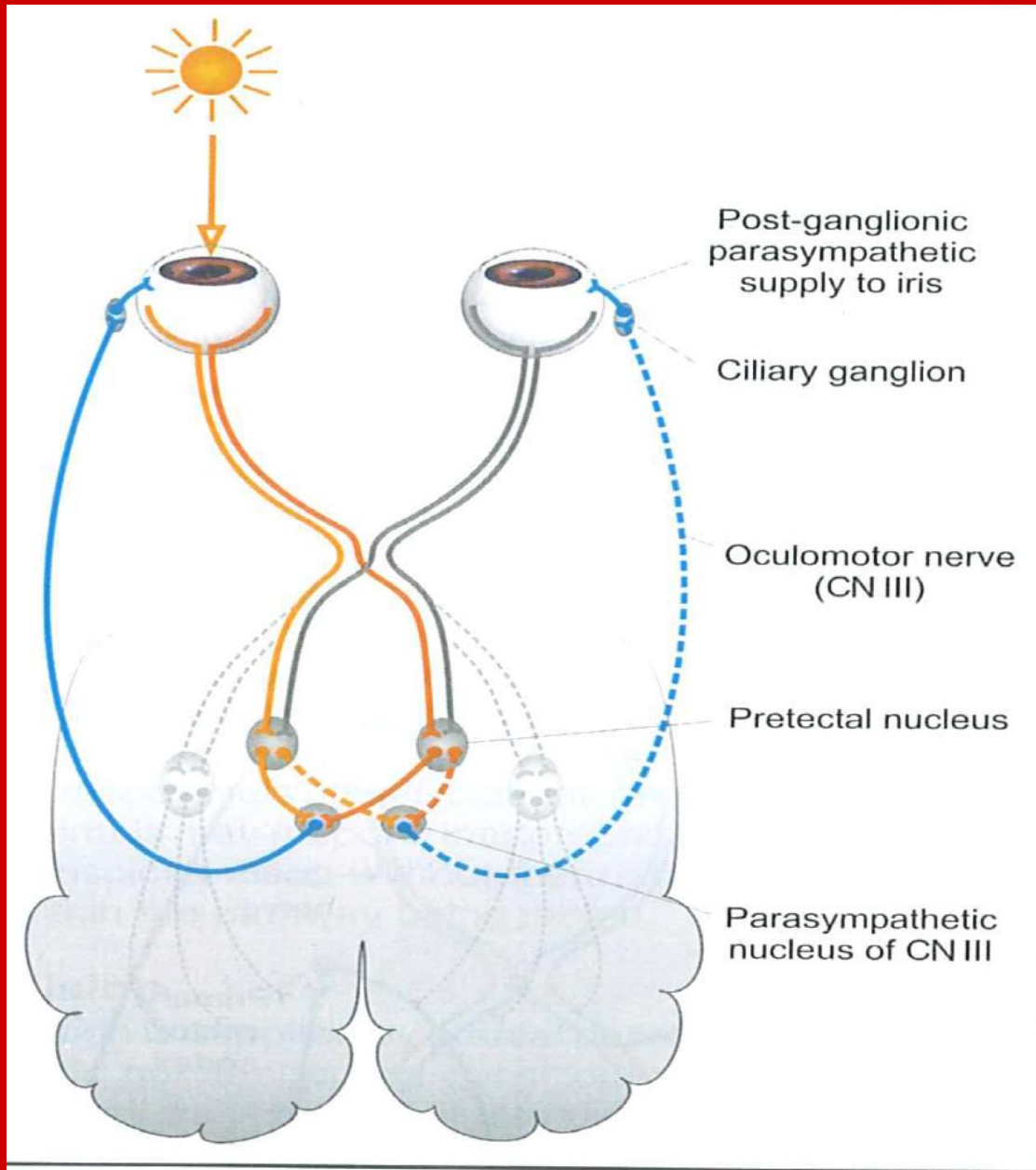
Klinik : Ptozis; üst göz kapağının düşmesi, pupillar dilatasyon, ventrolaterale deviasyon

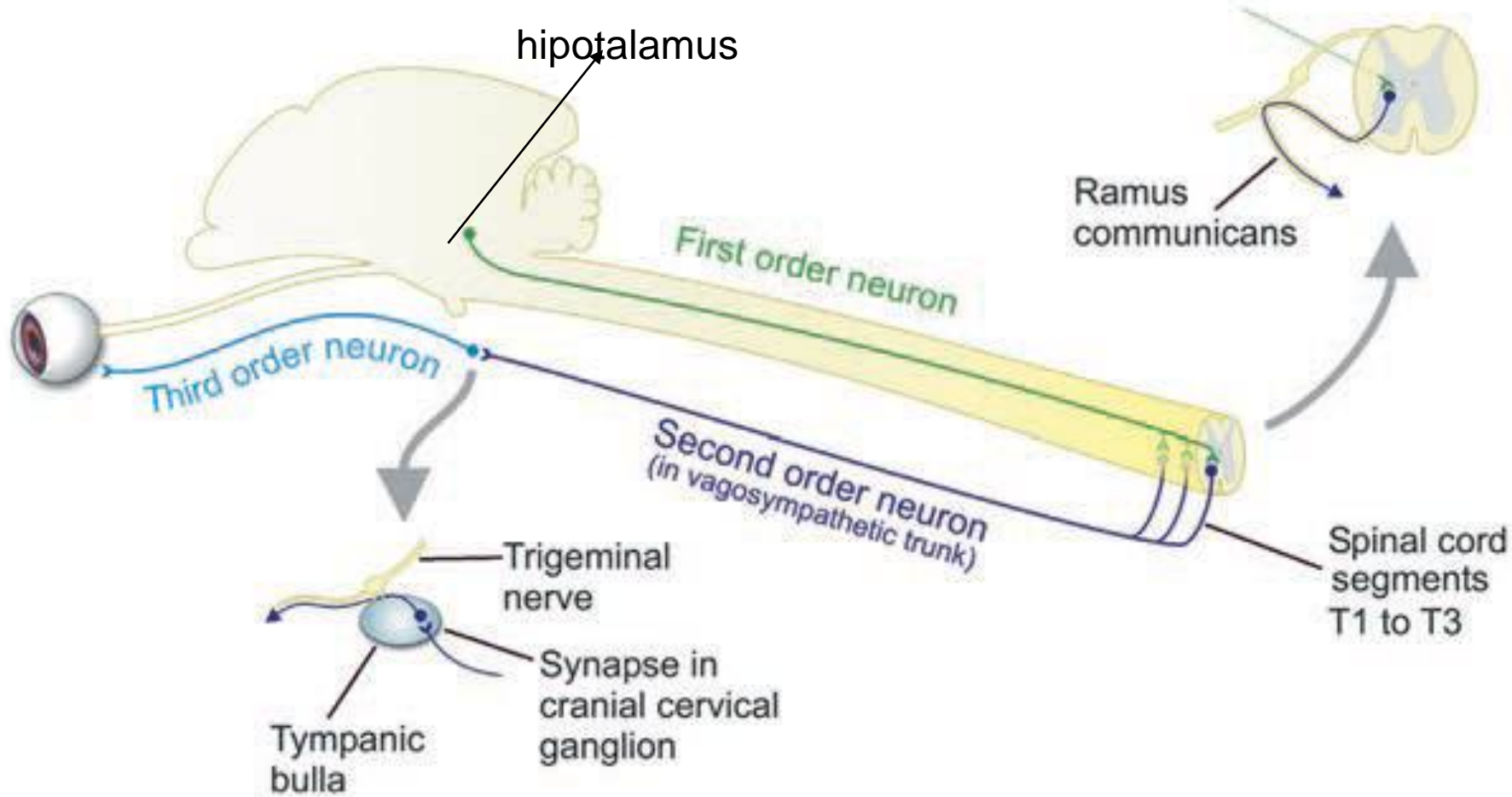
(Sığırlarda göz horizontal pozisyonundadır)

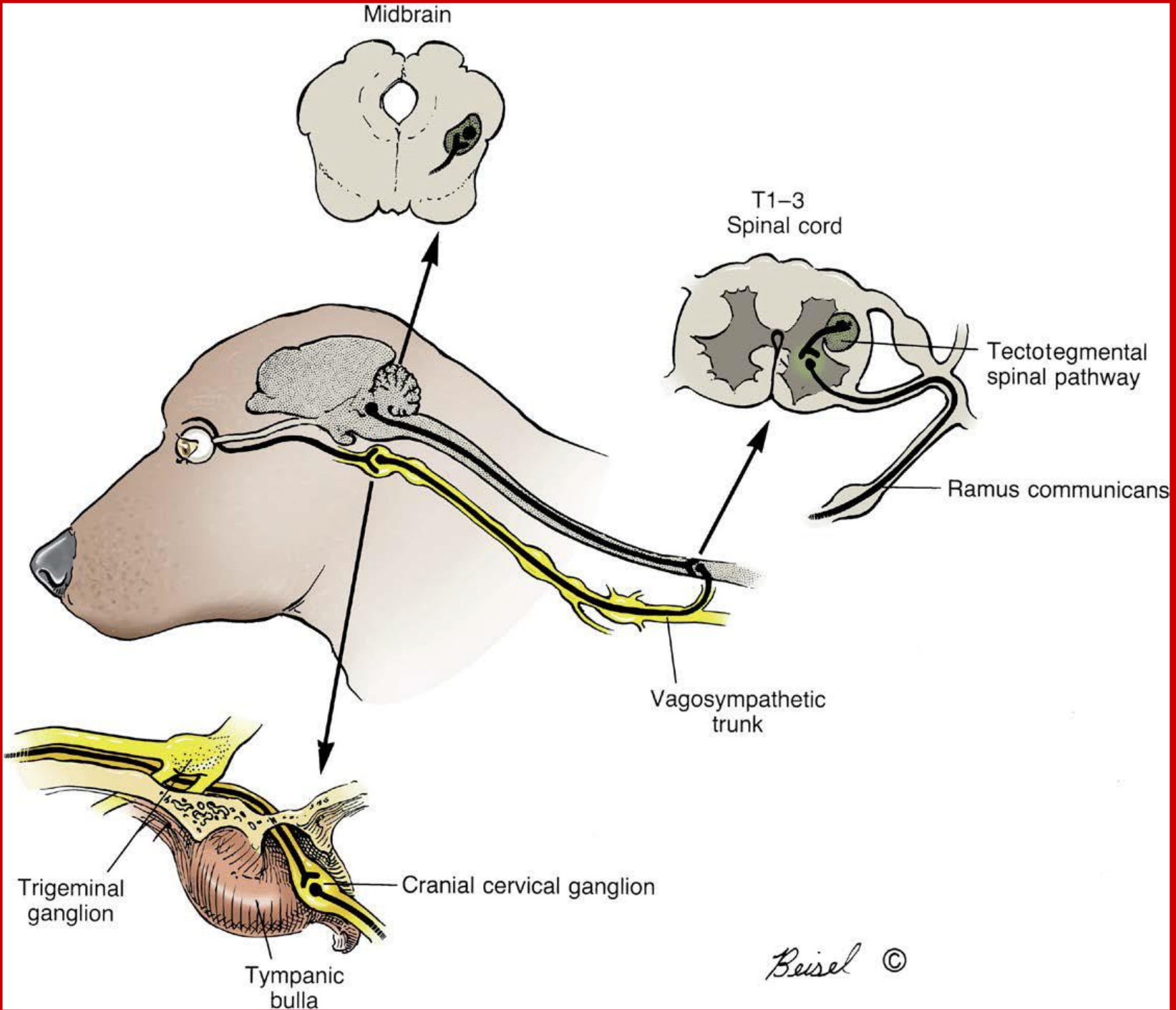










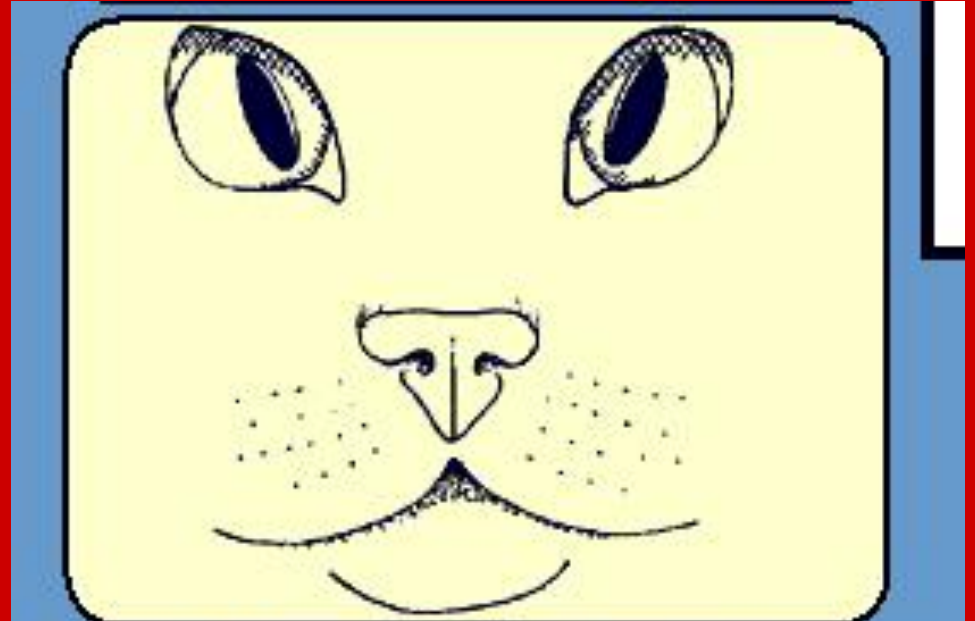


Beisel ©

KS IV - N. Trochlearis

m. Obliquus dorsalisin
motorik koludur.

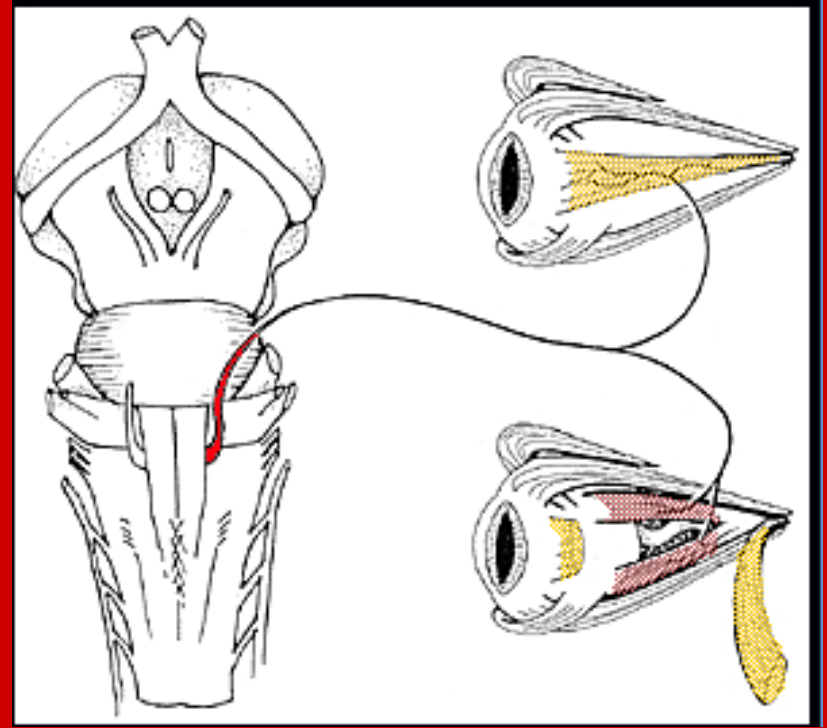
Klinik Laterale
rotasyon

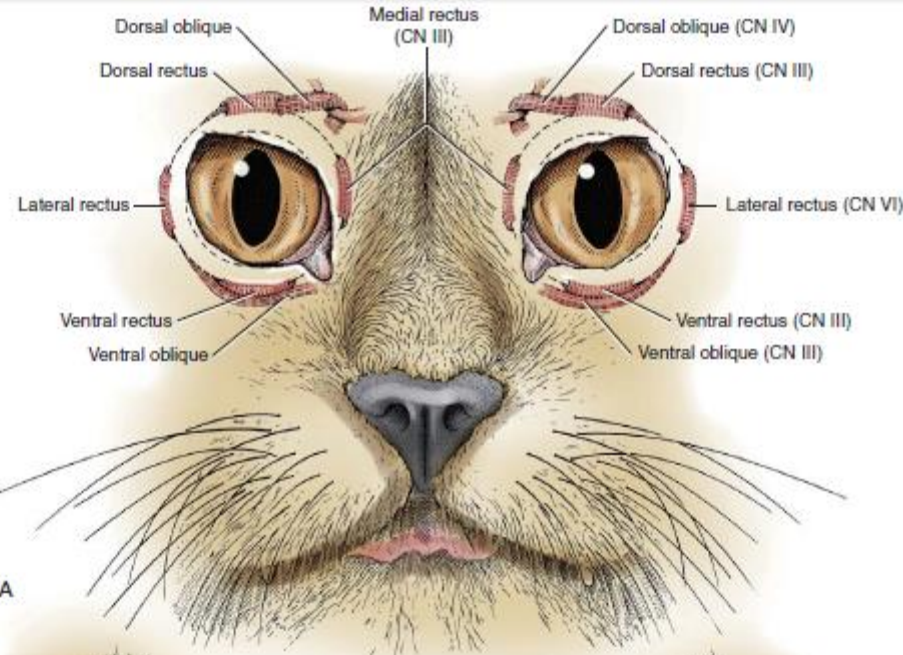


**KS VI – N.
Abducent,**

**M. Rektus lateralis
ve retraktor bulbiyi
innerve eder.**

**Klinik: Laterale
bakamama,
retraksiyonun
yapılamaması ile
birlikte medial
strabismus**





A



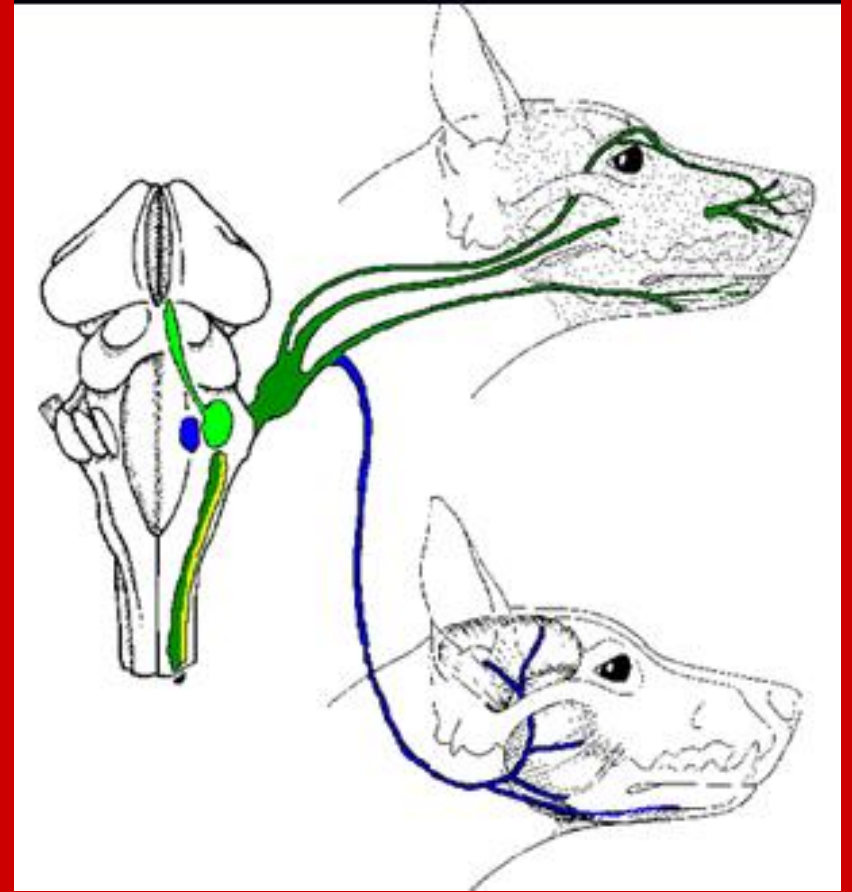
N. Okulomotorius

N. Abducent

N. Trochlearis

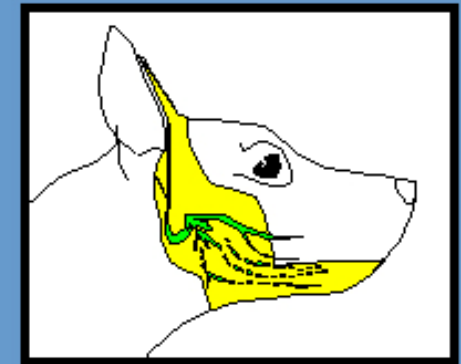
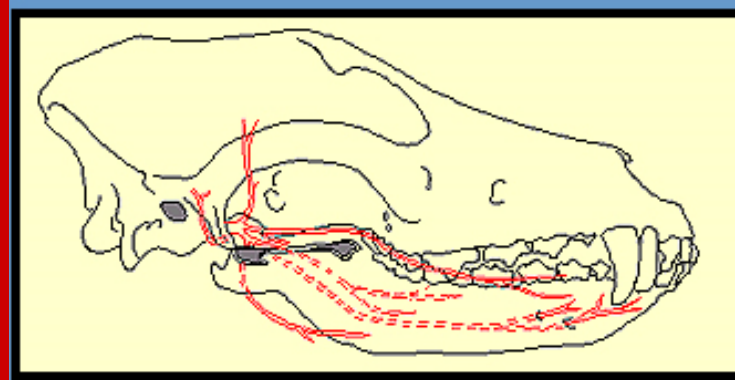
KS V – N. Trigeminus

Çiğneme kaslarının
motorik başın
sensorik
innervasyonunu
sağlar

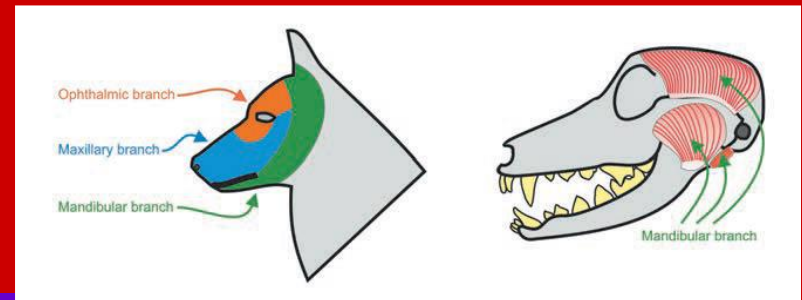
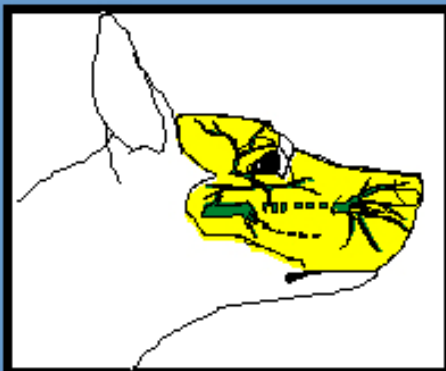
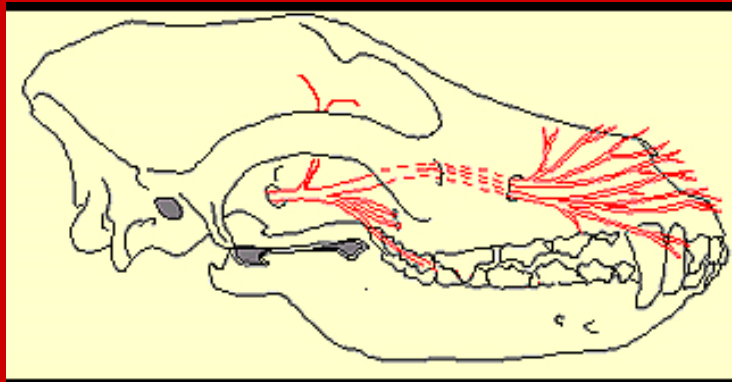




Oftalmik



Mandibular

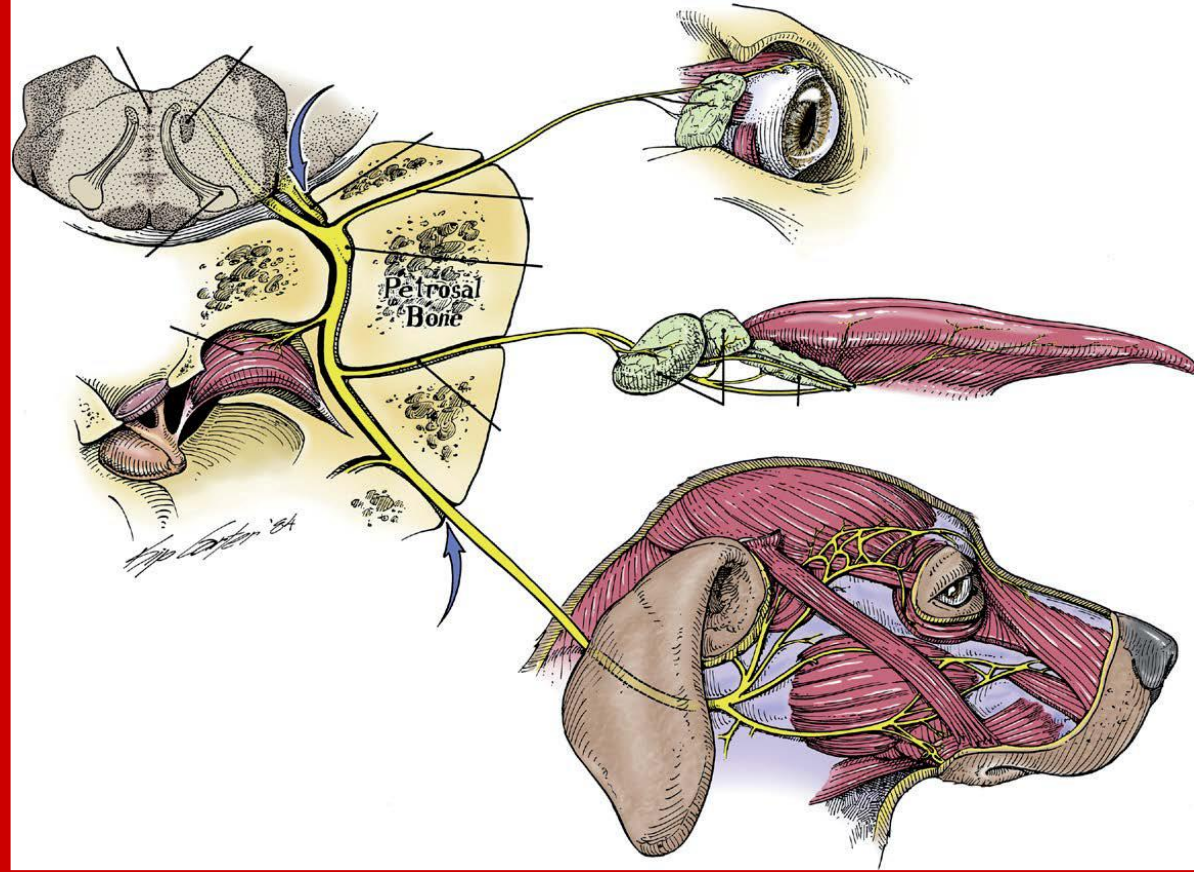


Maksillar

KS VII - Nervus Fasialis:

Fasial kasların motorik fonksiyonları ile damak ve dilin rostral 2/3 ünü sensorik duyumunu sağlar

Klinik: Yüzde asimetri, dudak, göz kapağı ve kulak düşer

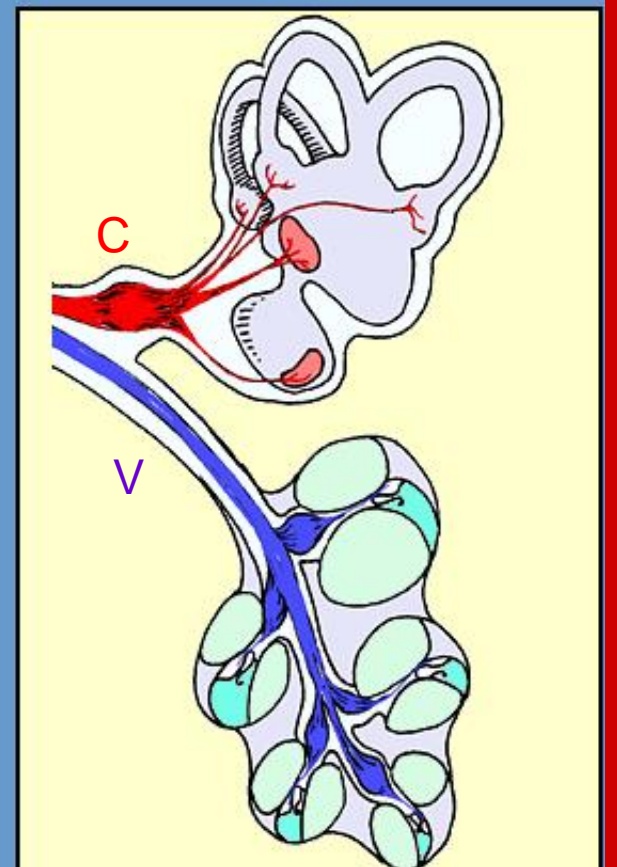
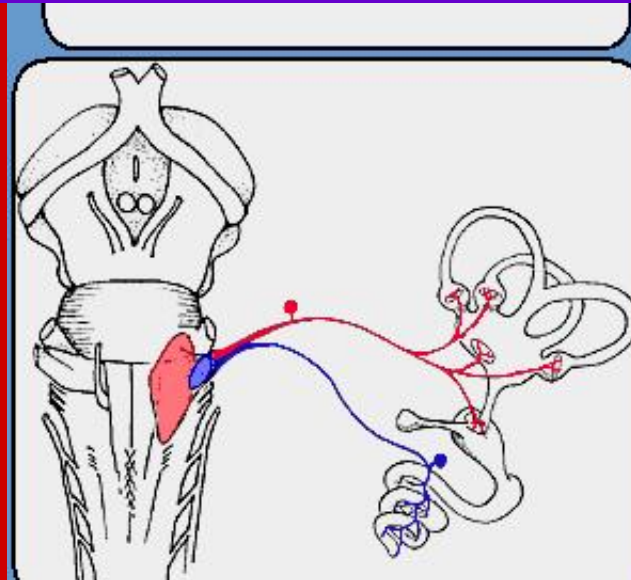


KS – VIII – N. Vestibulokohlearis

N. Kohlearis: İşitme işlevini

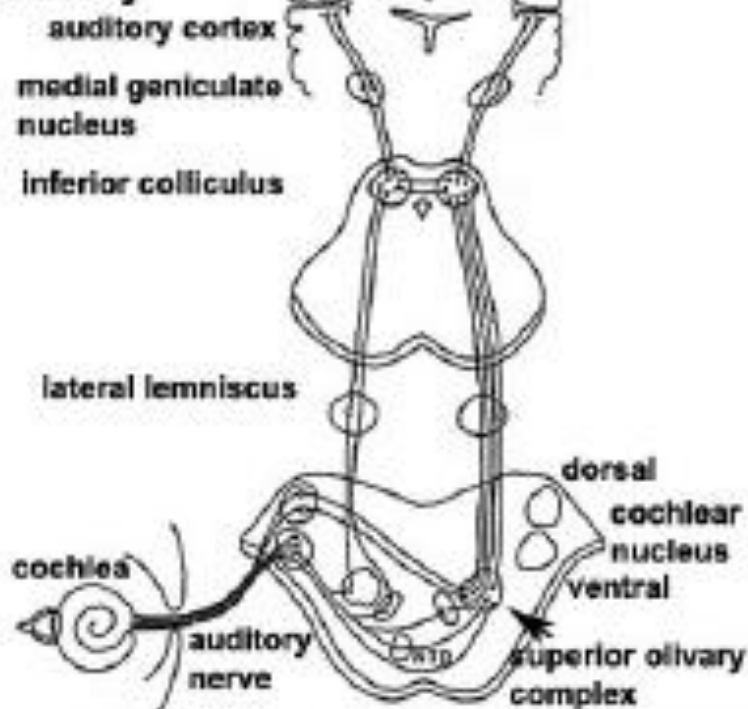
N. Vestibularis: Yer çekimine karşı denge sağlar.

Klinik: Ataksi, nistagmus, başın lezyonun olduğu tarafa eğik tutulması, inkoordinasyon, sendeleme, kendi etrafında dönme



Auditory System

Central Auditory Pathway

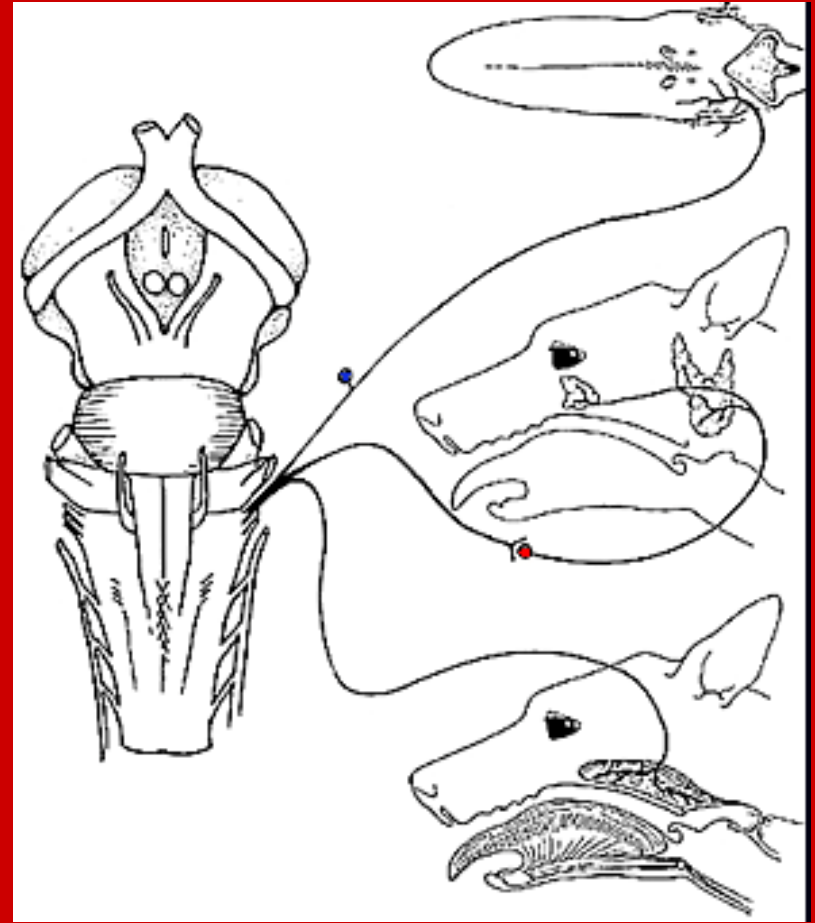


- Central (CANS)
 - Cochlear nucleus (CN)
 - Superior Olivary Complex (SOC)
 - Lateral Lemniscus (LL)
 - Inferior Colliculus (IC)
 - Medial Geniculate Body (MGB)
 - Auditory Cortex

KS IX, N. Glossofaringialis

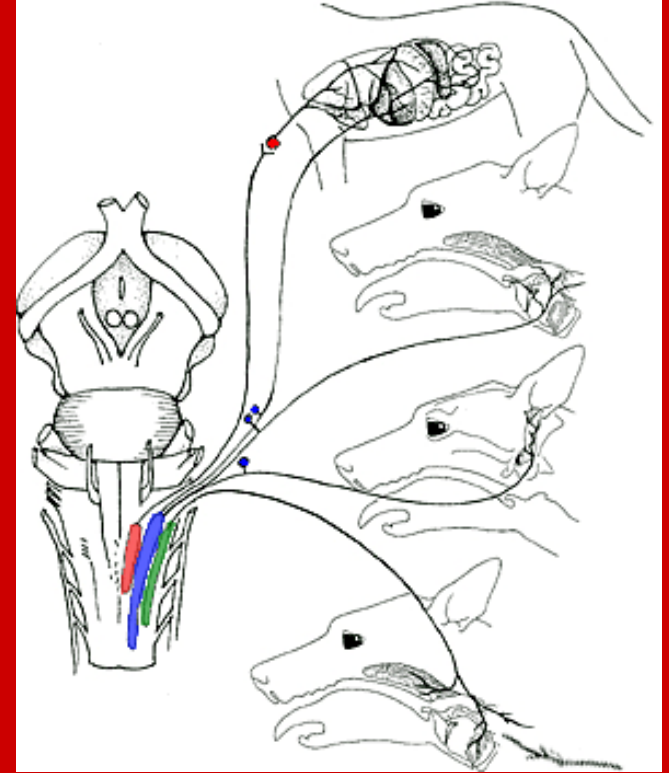
Farenksin motorik innervasyonu, Gl parotis ve zigomatikusun parasempatik innervasyonu, Dilin kaudal 1/3 ünü innerve eder

Tat alma, Yutkunma ve salivasyon

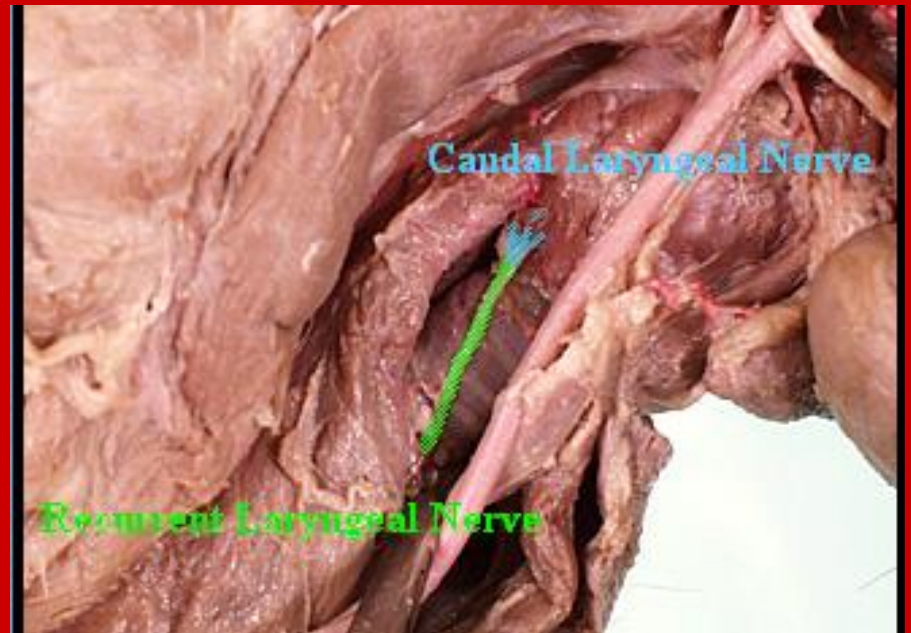


KS X N Vagus

Farenks, larenks ve damağın
sensorik innervasyonunu
Sakral parasempatik
sinirlerle innerve edilen pelvik
organlar hariç tüm iç
organların parasempatik
innervasyonunu sağlar

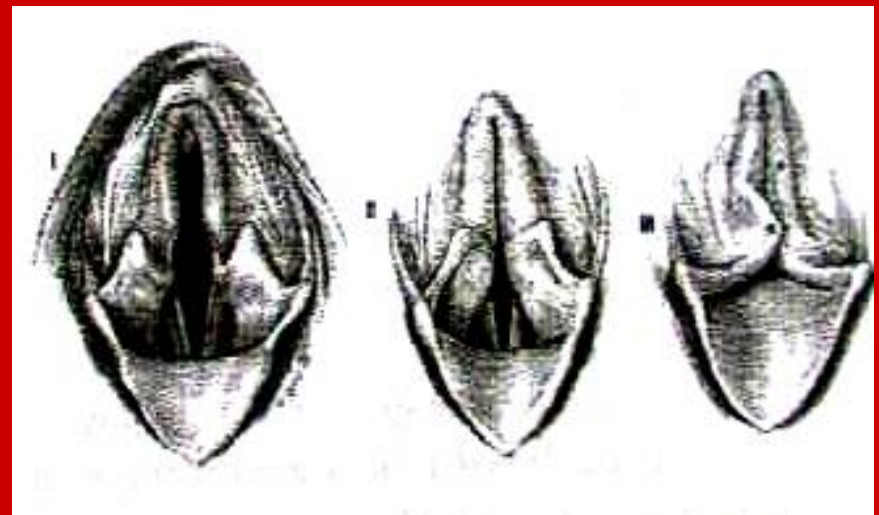


KORNAJ



Normal

Hemiparalysis



KS XI - N. Aksesorius

M. Trapezius,

M. Sternosefalikus

M. brahiosefalikus

