

# *Claw Affections*

# ANATOMY OF THE FOOT

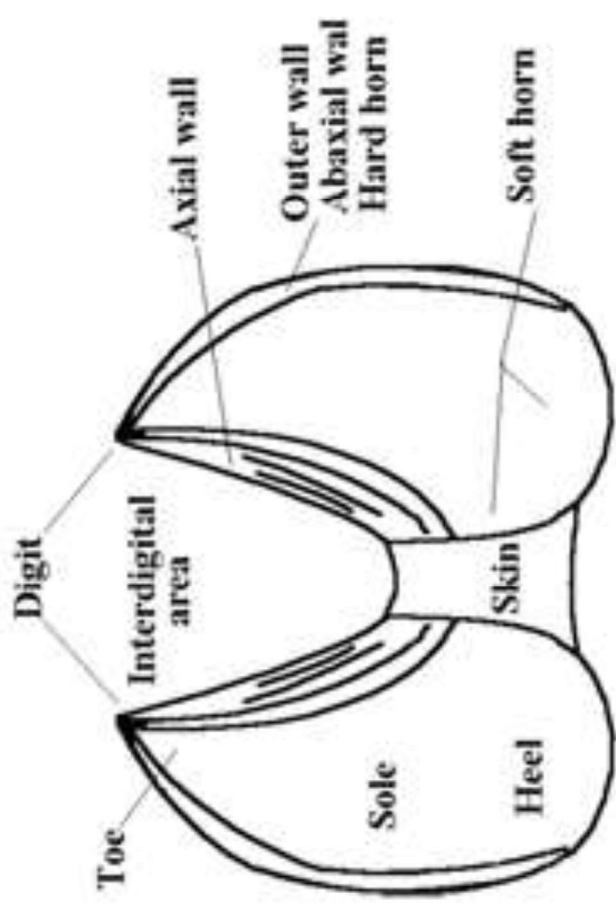
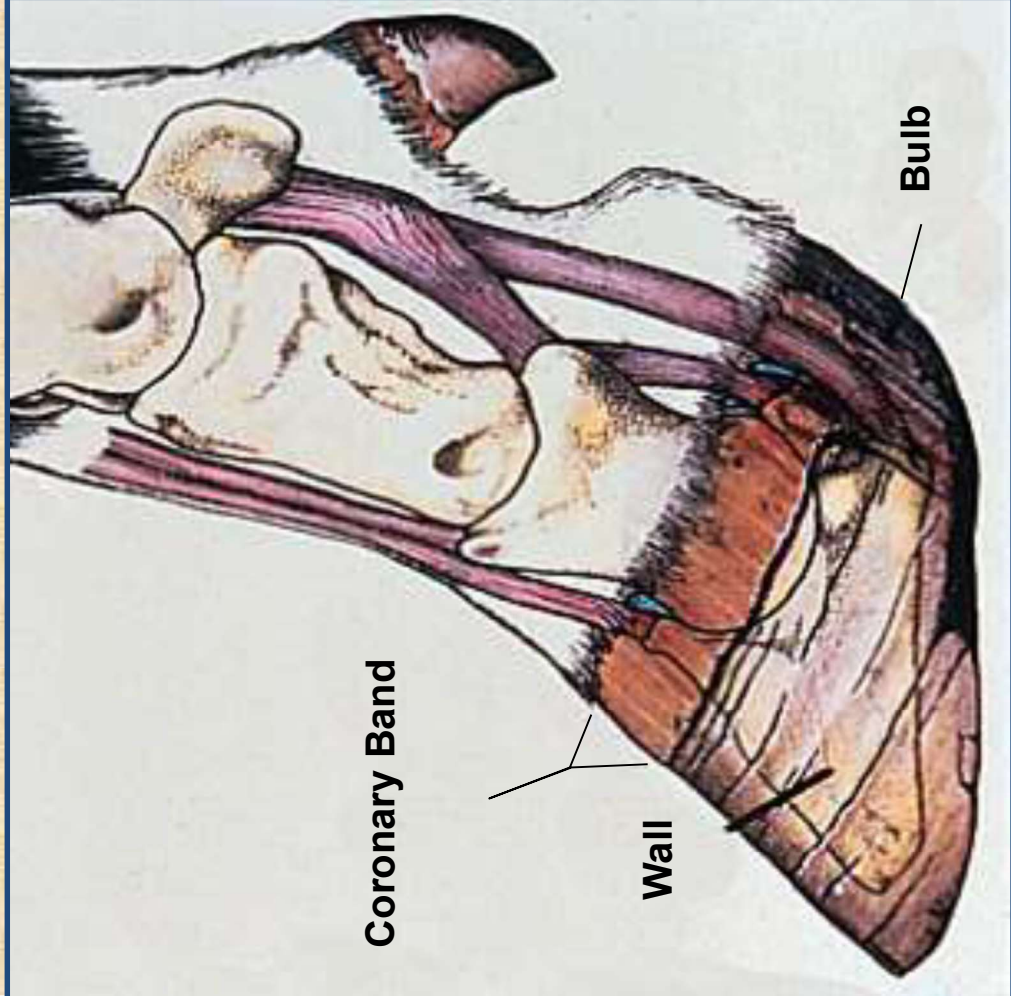
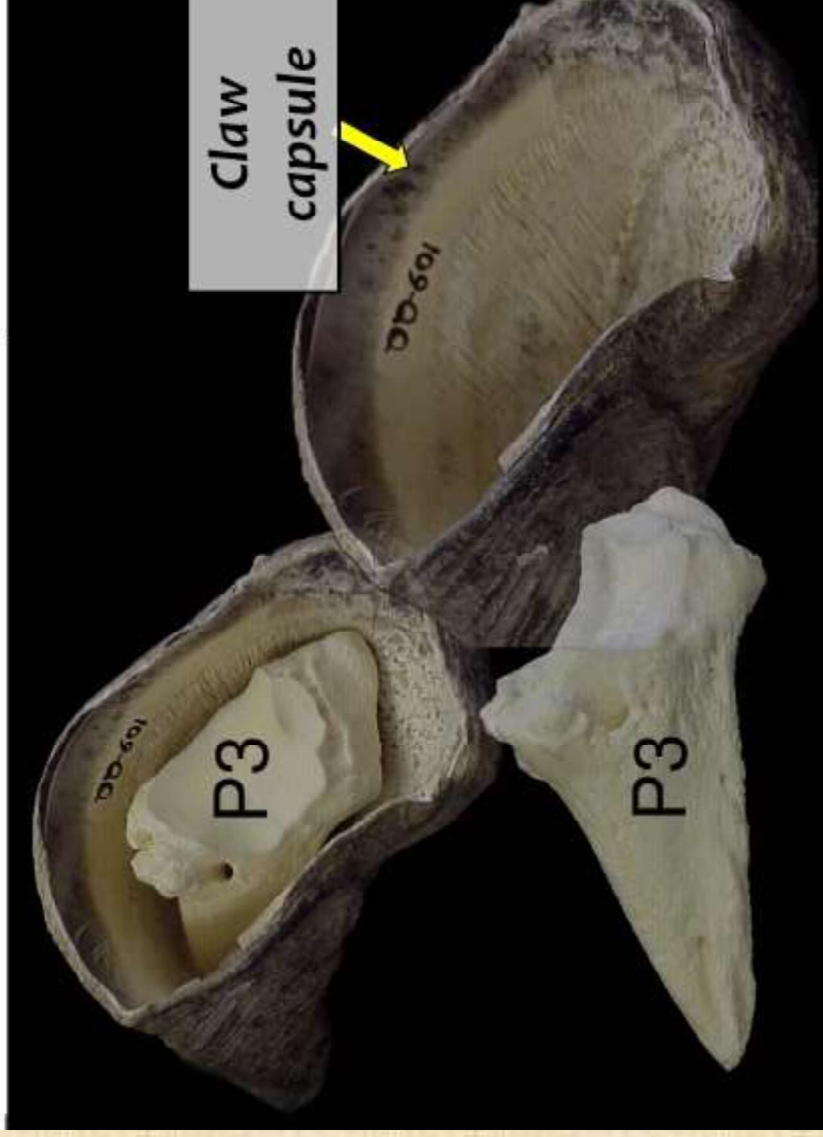


Figure 1. Parts of a sheep's foot



# ANATOMY OF THE FOOT

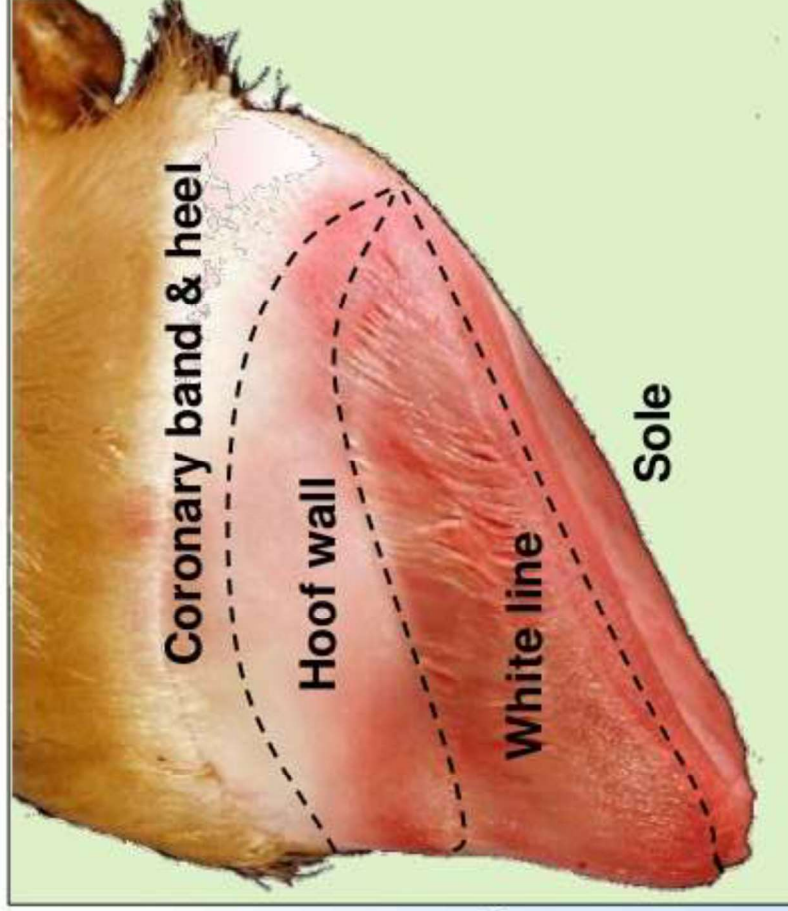
## P3 & the claw capsule



# ANATOMY OF THE FOOT

## Different areas of the corium

Tissue between P3 & claw capsule that 'makes' the claw capsule





# Cattle Lameness

- Cattle lameness is one of the most significant welfare and productivity issues in dairy farming.
- 95% of lame cattle are dairy breeds
- 90% of cases involve the digits
- 80% of digital lameness is located in the hind limbs
  - 50% of digital lameness involves the horny tissue
  - 50% of digital lameness involves the skin, mostly digital dermatitis
- 70% of the horny lesions involve **the outer claw**

# foot rot

## (Interdigital phlegmon, Foul in the foot)

### INTRODUCTION

- foot rot is a subacute or acute necrotic infection that originates in the interdigital skin, leading to cellulitis in the digital region.
- foot rot has a worldwide distribution
- usually sporadic but may be endemic in intensive beef or dairy cattle production.
- The incidence varies according to weather, season of year, grazing periods, and housing system.
- foot rot is less common today than it was decades ago probably because dairy cows spend much less time at pasture.
- However, on average, foot rot accounts for up to **15%** of claw diseases.