



Bal Arısı Anatomisi

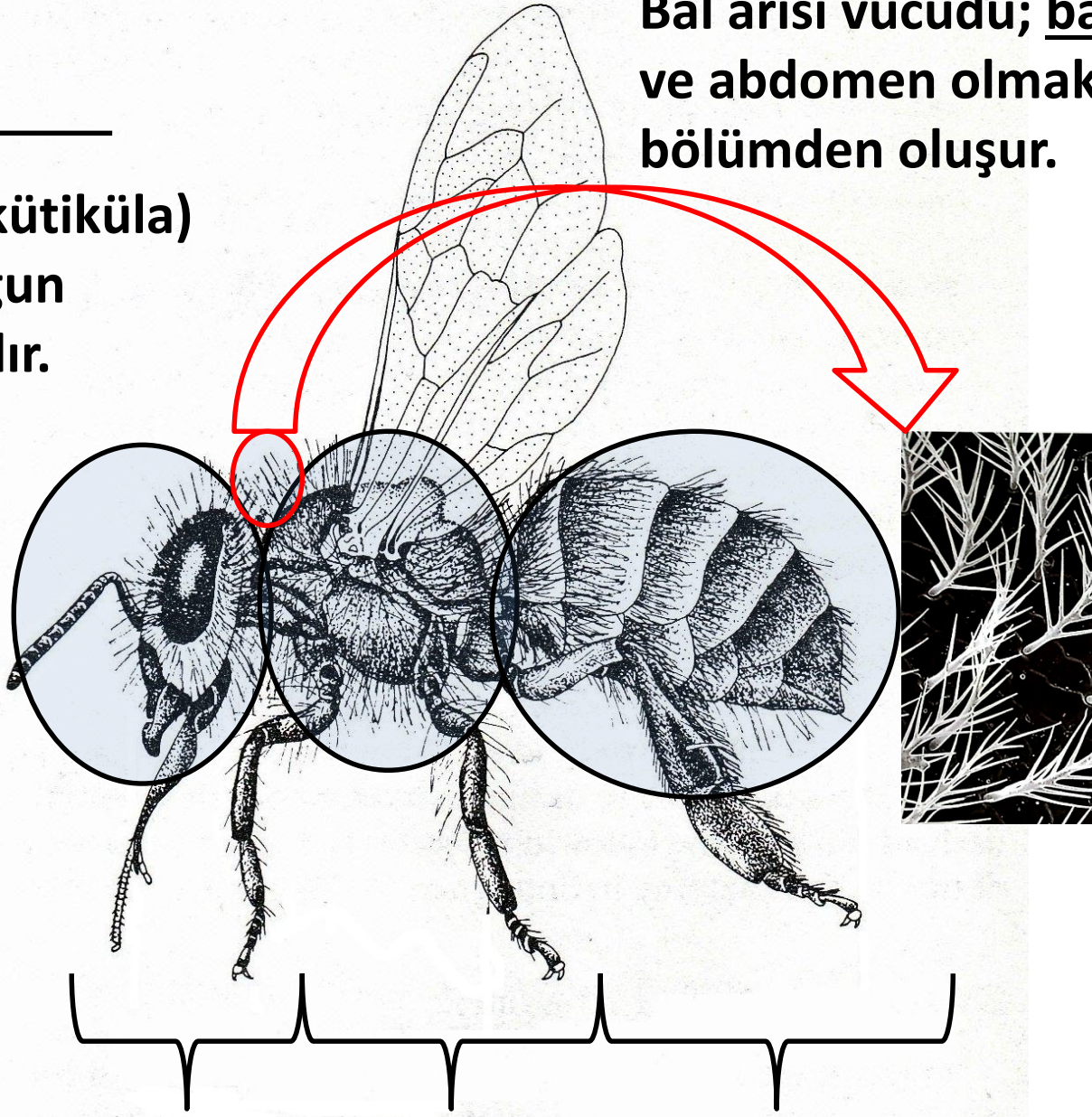
H. Vasfi GENÇER

A. Ü. Ziraat Fakültesi Zootekni Bölümü

Dış yapı

Dış iskeletin (kütikula) üzeri ince, yoğun tüylerle kaplıdır.

Bal arısı vücudu; baş, toraks ve abdomen olmak üzere 3 bölümden oluşur.



Baş

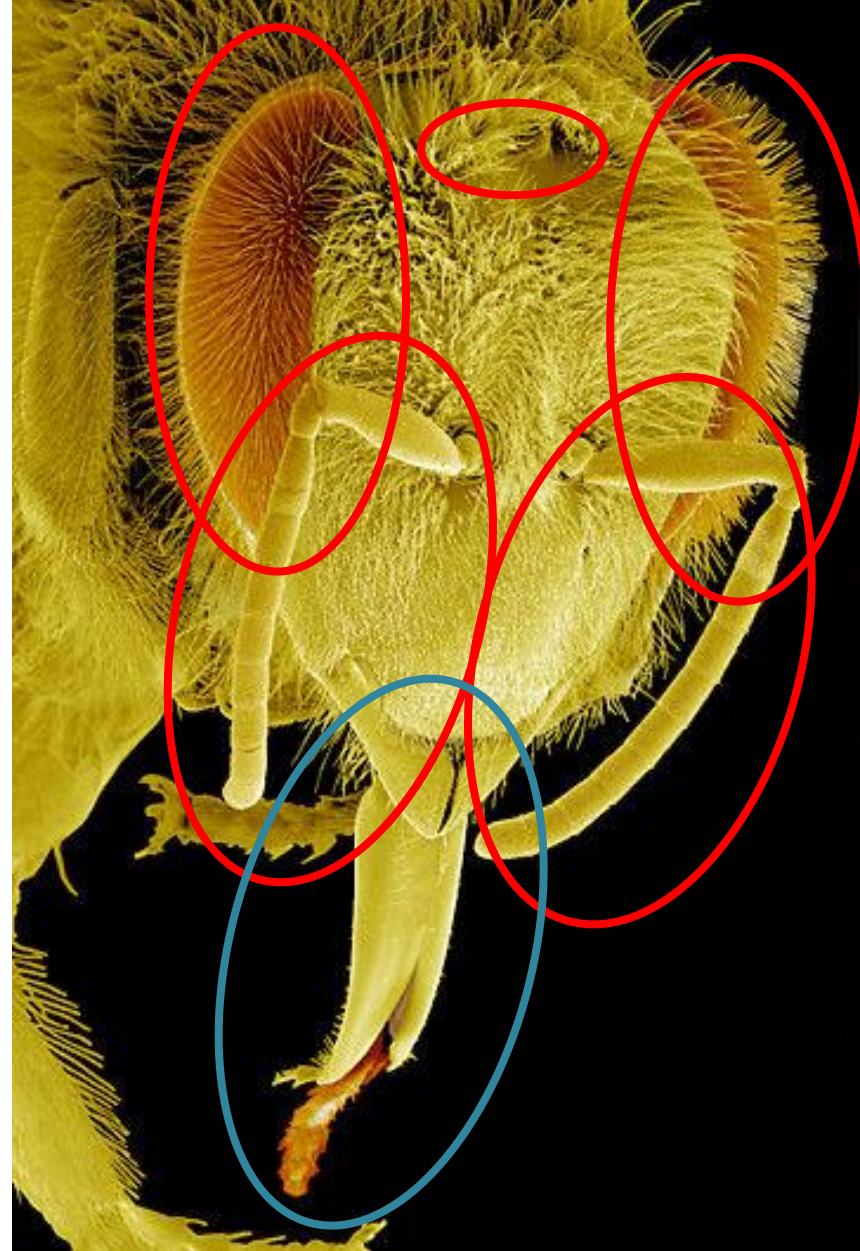
Toraks

Abdomen

Baş

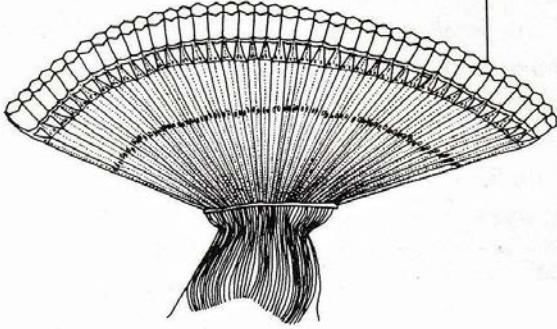
Algılayıcı yapılar

Ağız parçaları

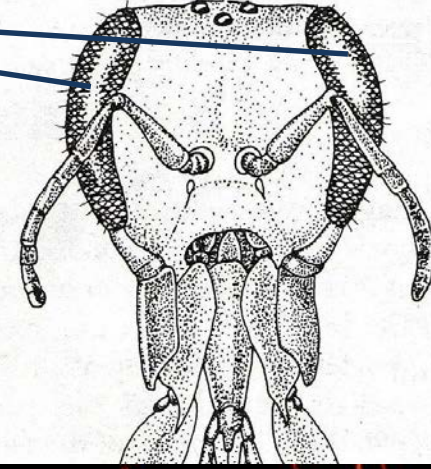


Dış yapı: Baş-Algılayıcı Yapılar

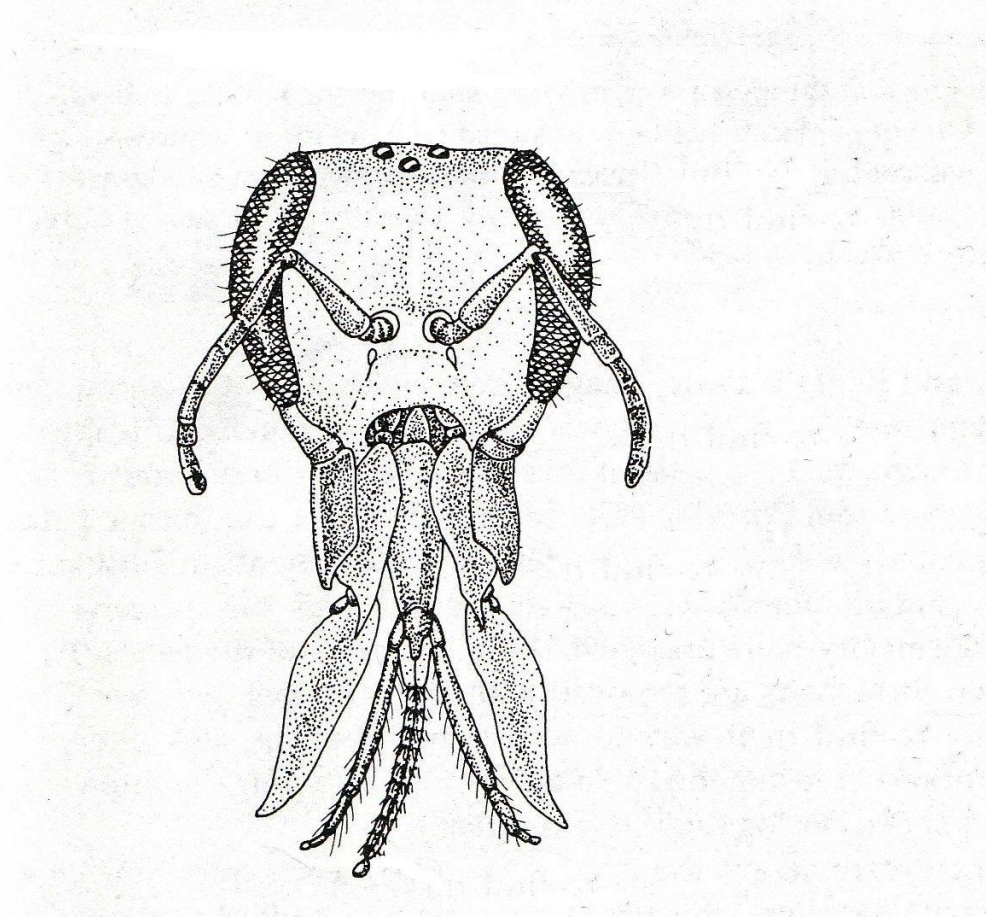
**Bileşik gözler
(yapı ve renk algılama)**



**Her bir bileşik gözde
4000-6900 hekzagonal
facet bulunur**



Ağız Parçaları

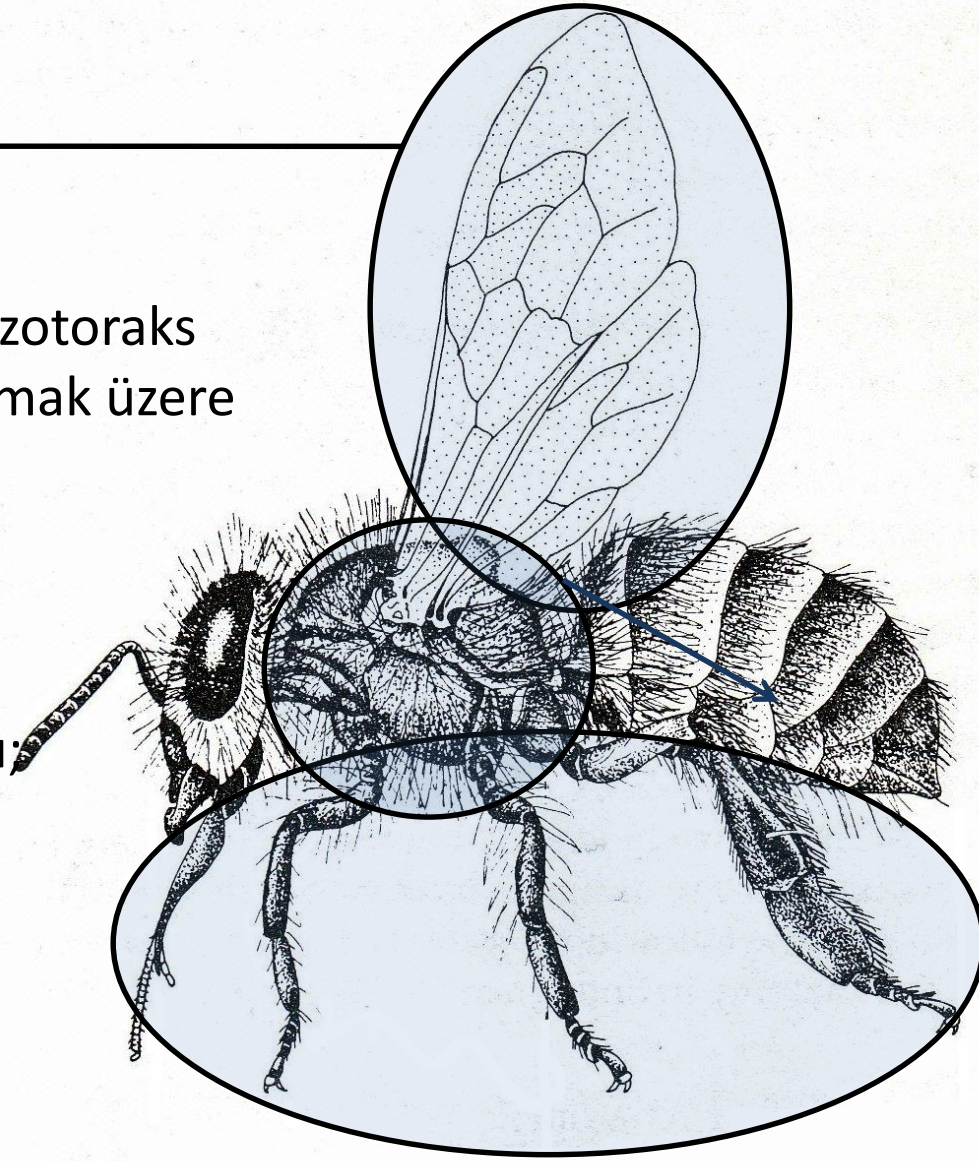


Toraks

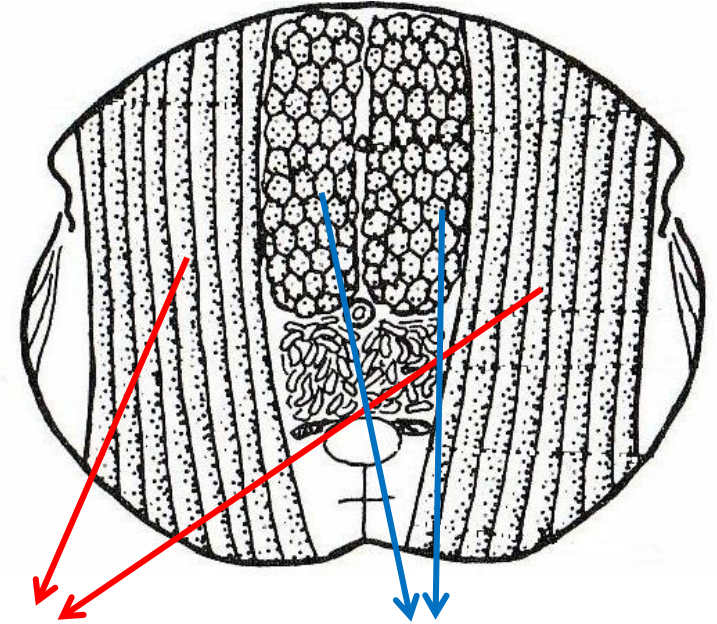
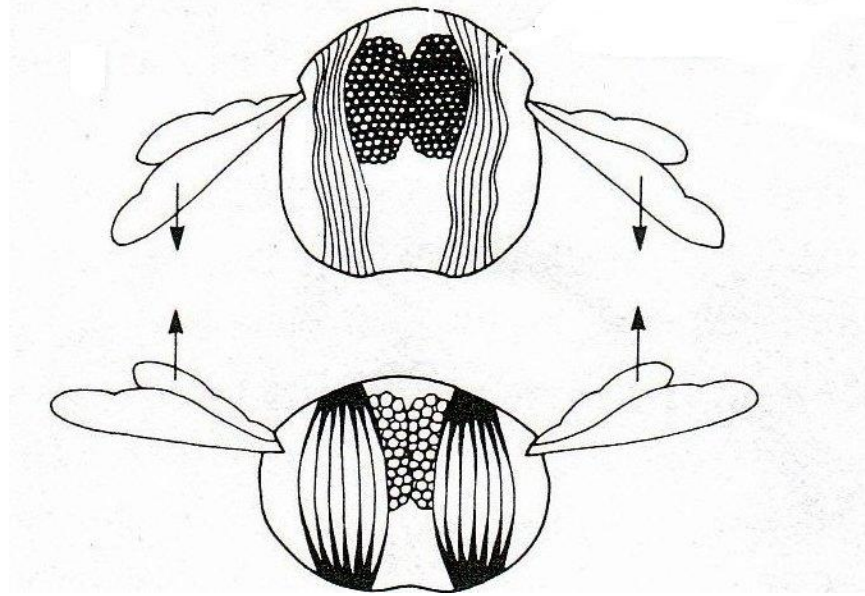
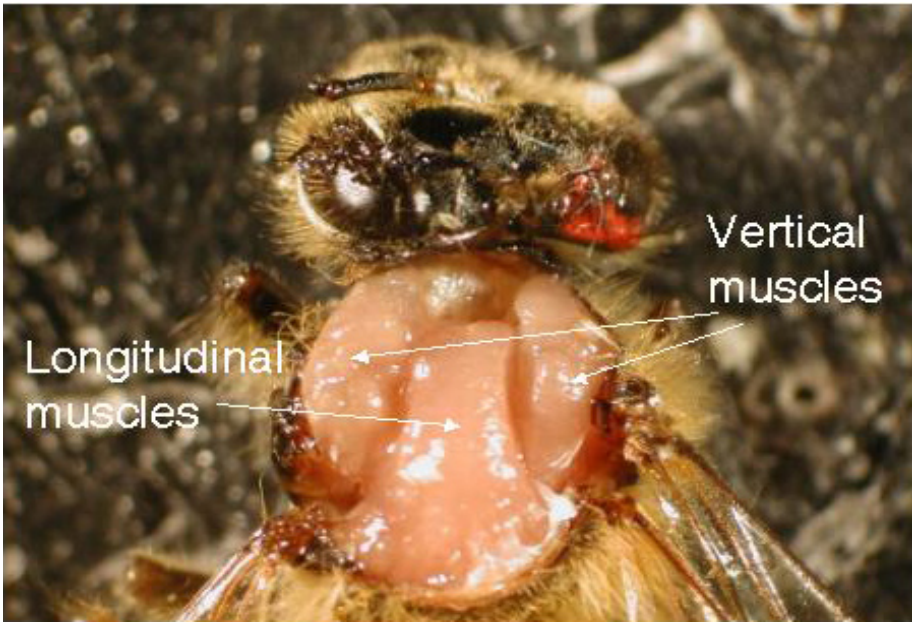
- Protoraks, mezotoraks ve metatoraks olmak üzere 3 kısıma ayrılır.
- Kaslar

Hareket organları:

- Bacaklar
- Kanatlar



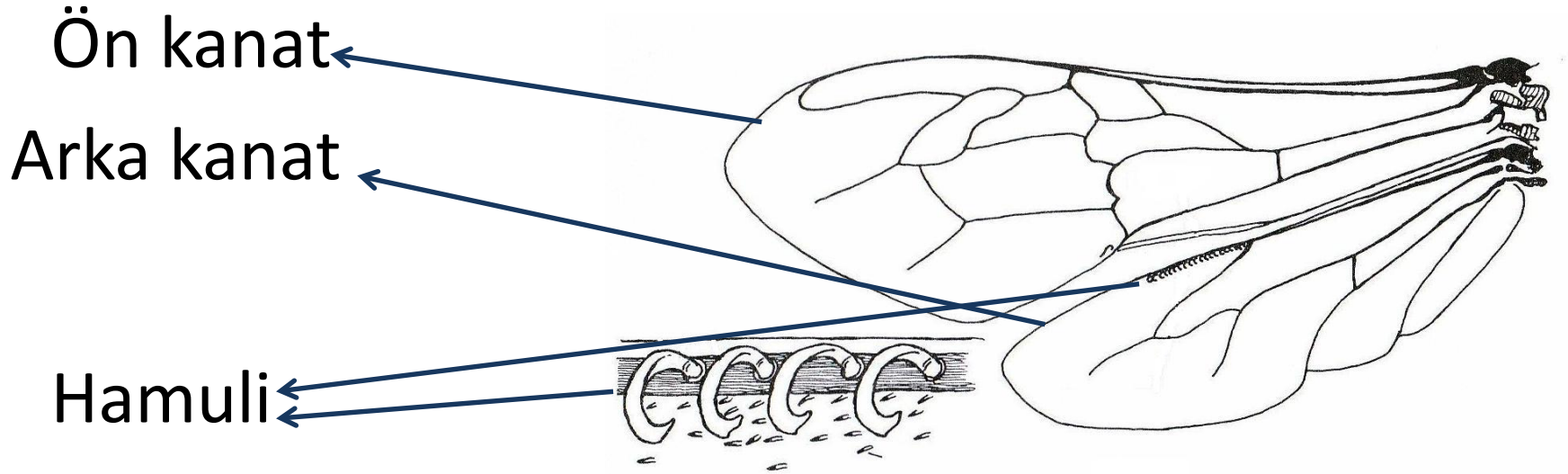
Toraks



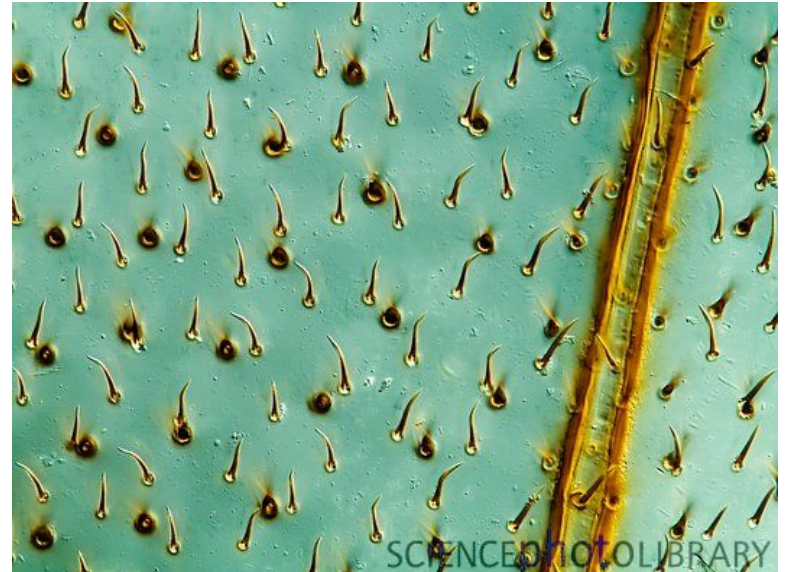
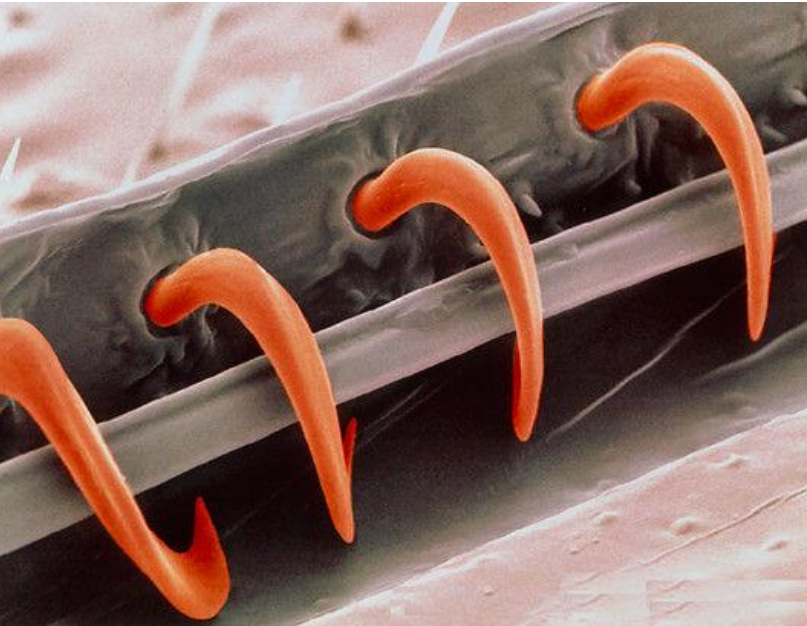
Dikey kaslar

Yatay kaslar

Kanatlar



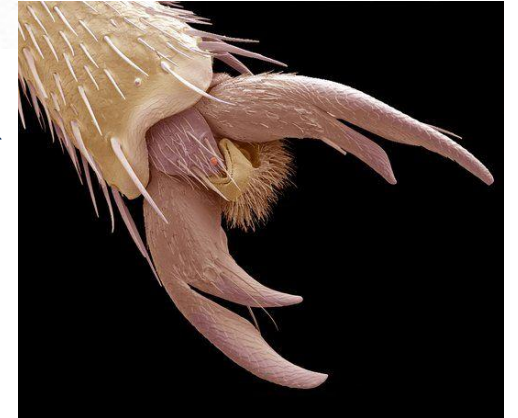
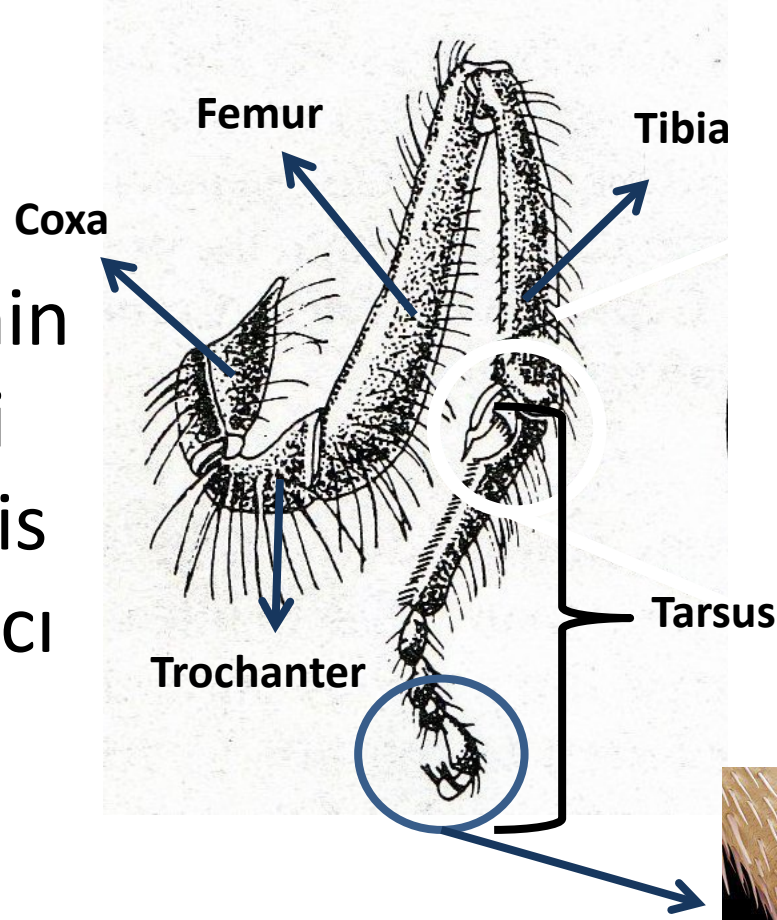
Kanat yüzeyi



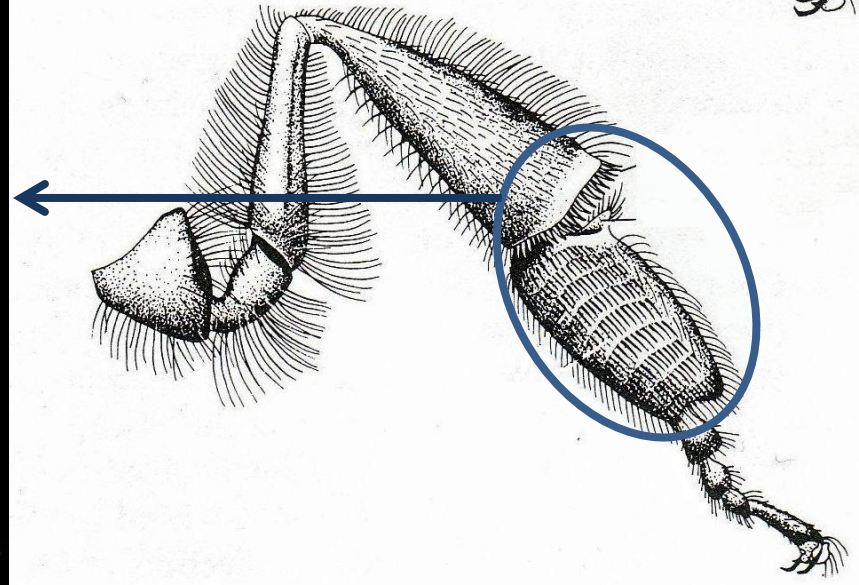
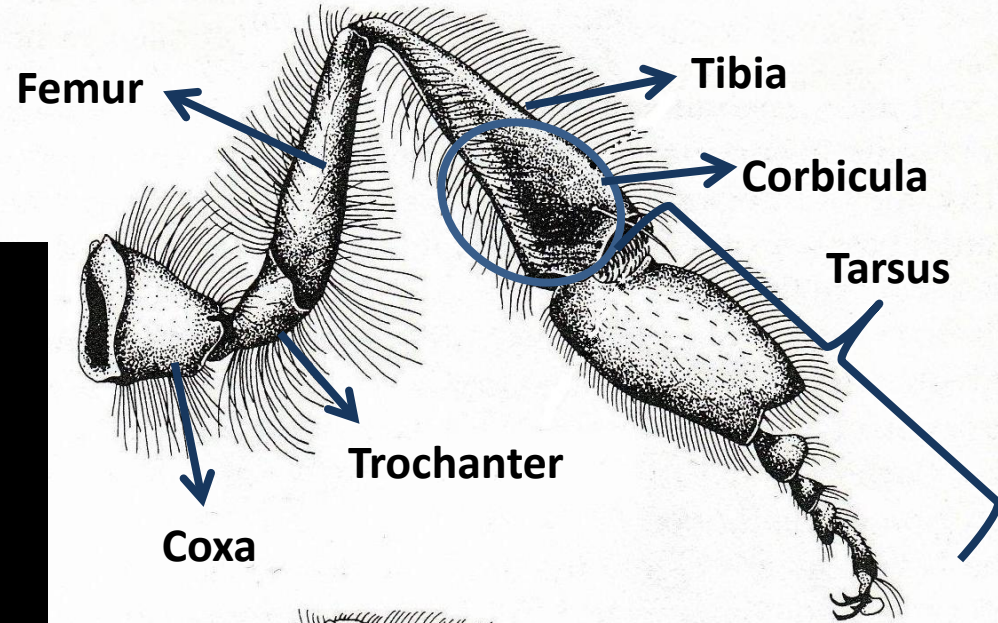
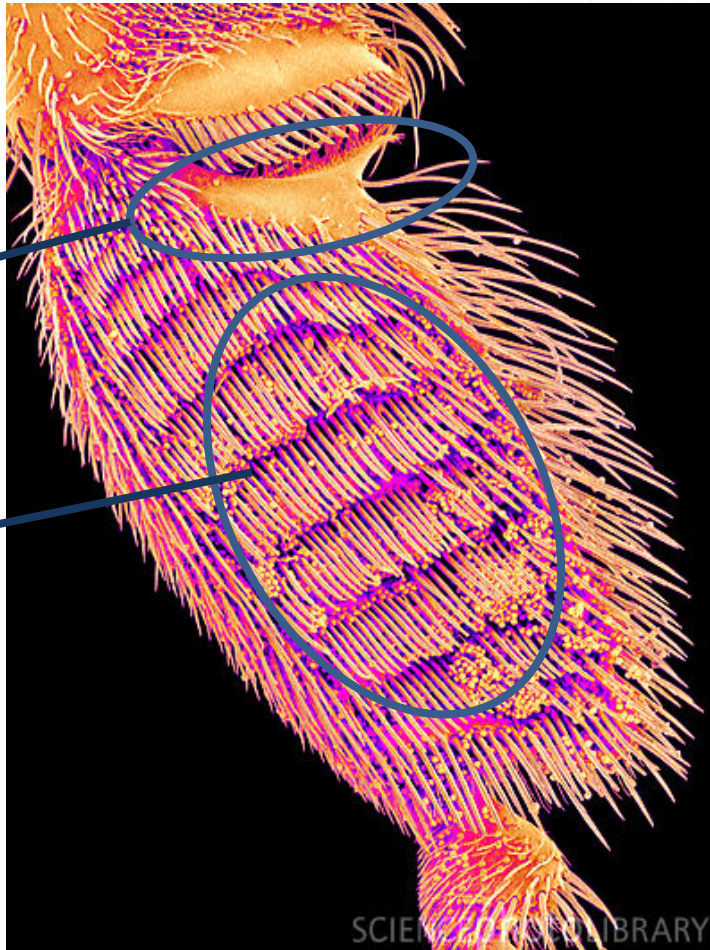
Dış yapı: Göğüs-Bacaklar

Ön bacak

Baş ve çevresinin
temizlenmesi
(polen, propolis
ve diğer yabancı
maddeler)



Arka bacak



İç yapı:

Sindirim ve Boşaltım sistemi

Dolaşım sistemi

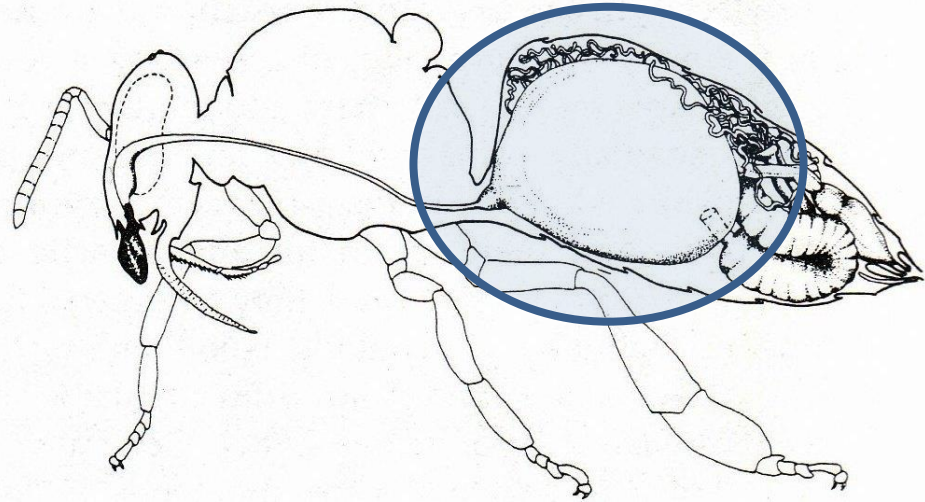
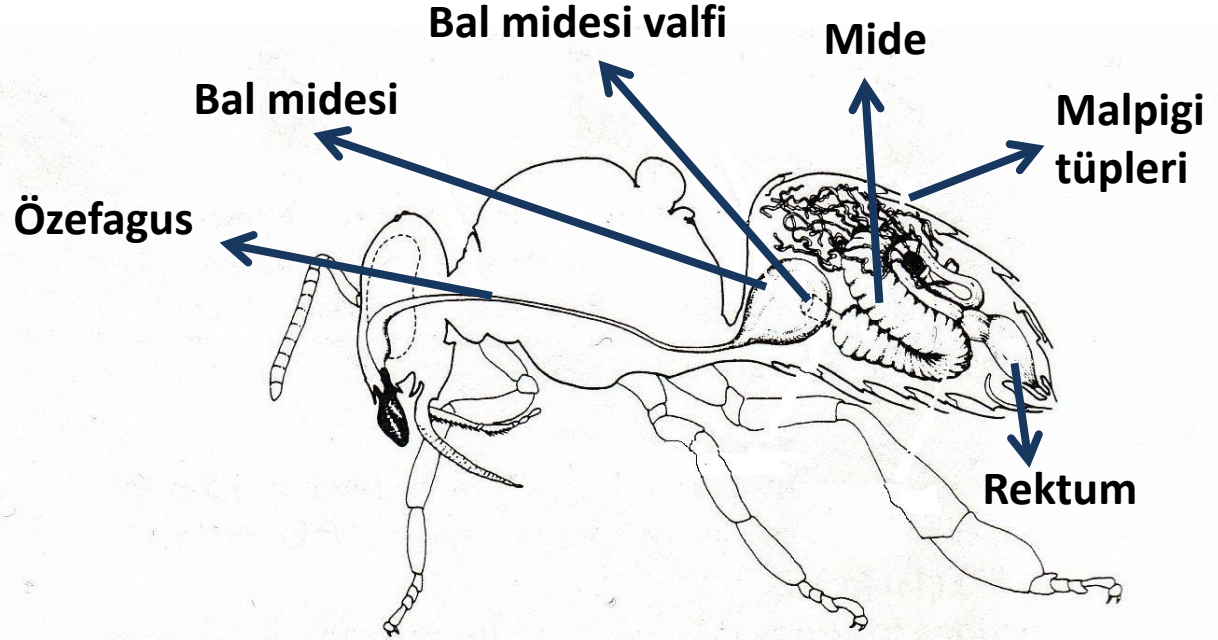
Solunum sistemi

Sinir sistemi

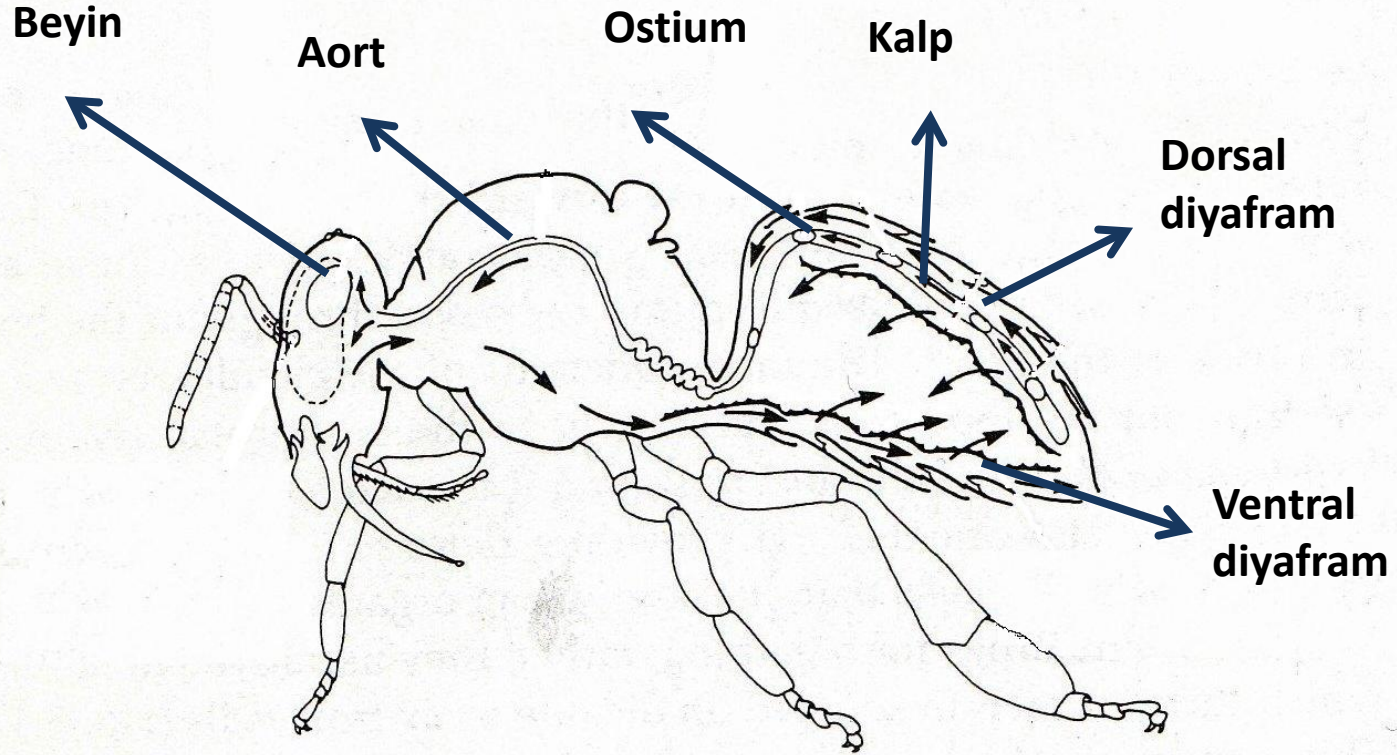
Salgı bezleri

Üreme organları

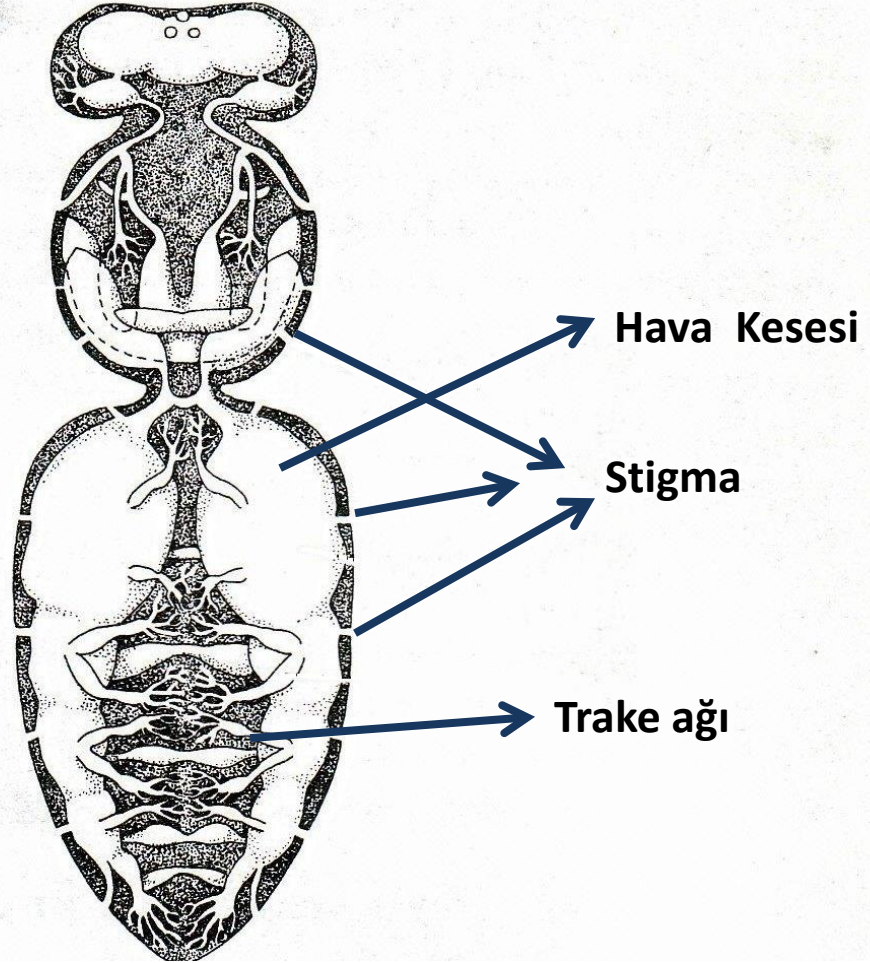
Sindirim sistemi



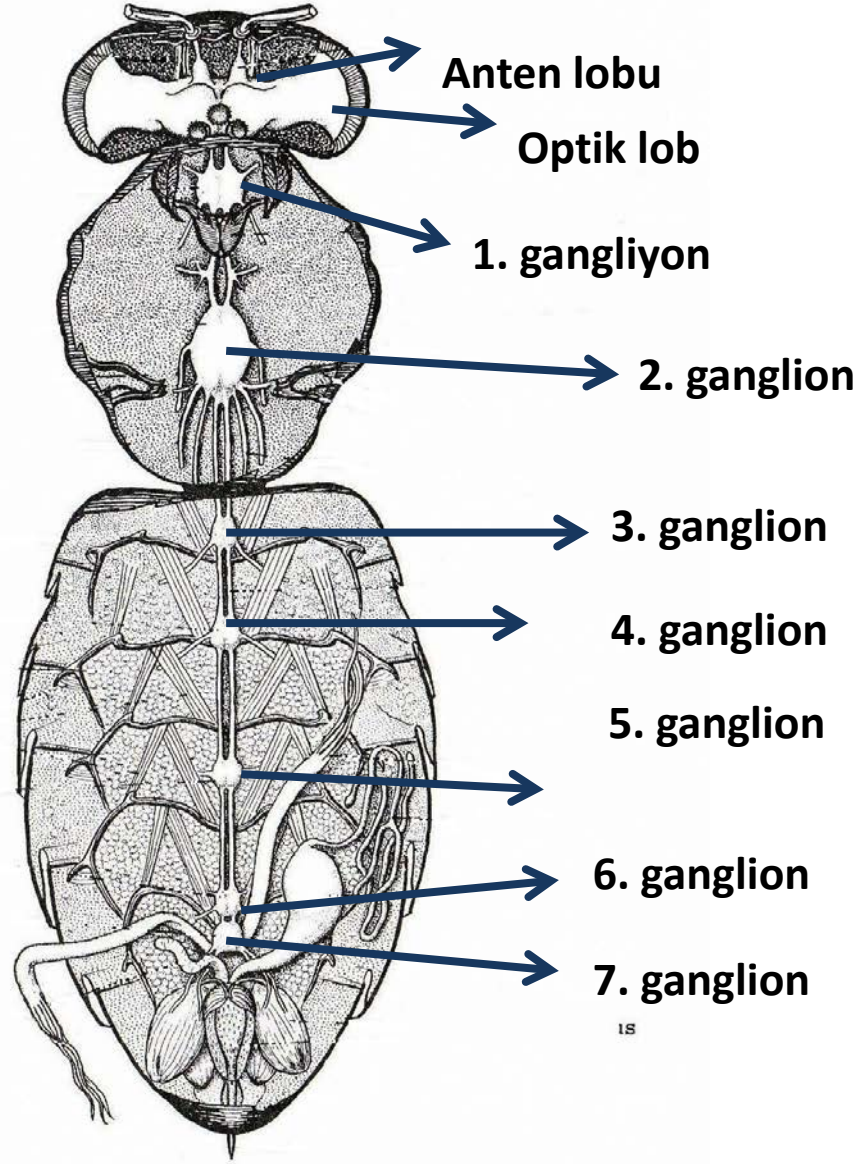
Dolaşım sistemi



Solunum sistemi



Beyin ve sinir sistemi



Salgı bezleri

