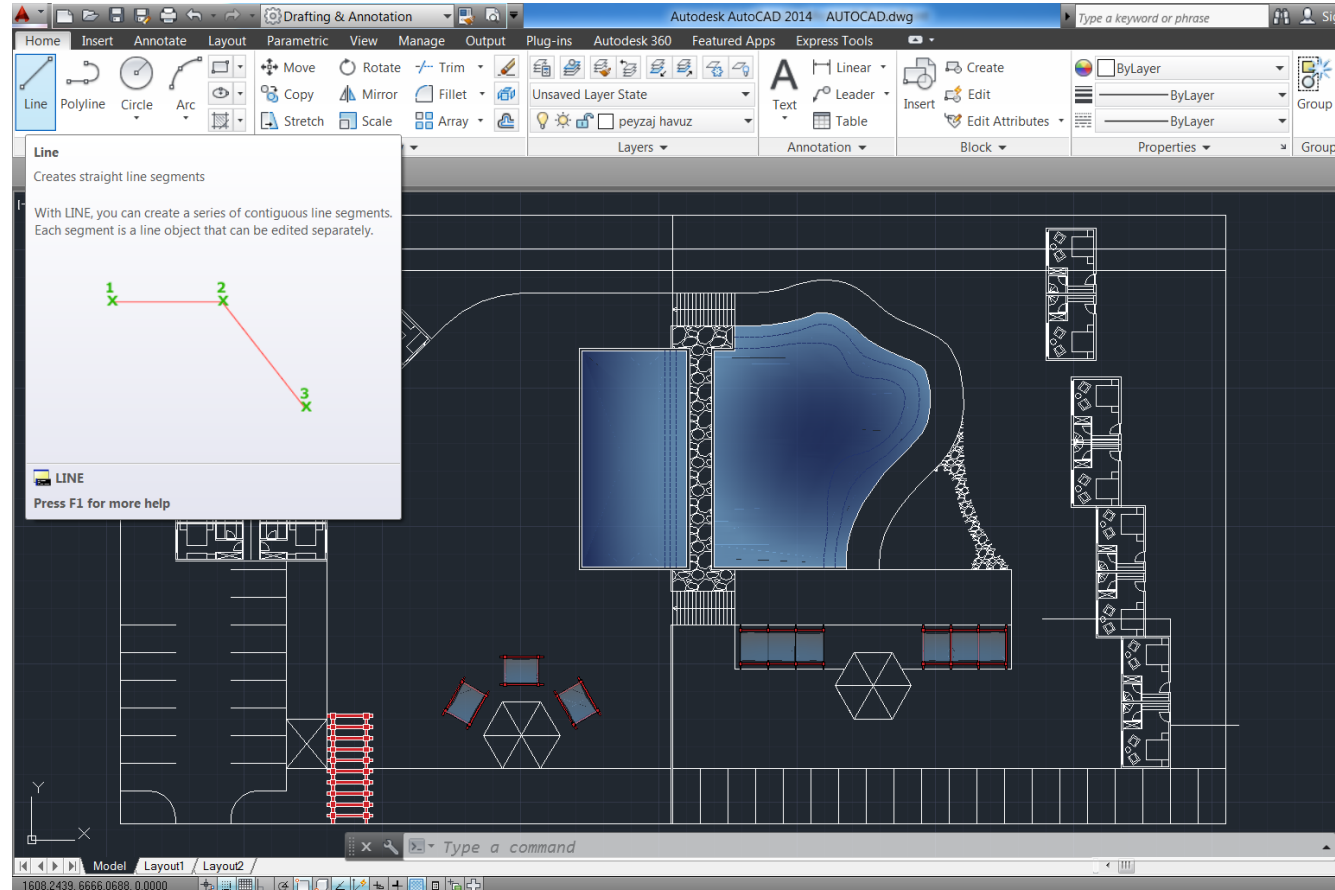


ÇİZİM OLUŞTURMA



DRAW MENÜSÜ

Line : AutoCAD programında, iki nokta arasında çizgi çizer. Açılı çizgi çizmek için açı girilir. Örneğin 50°'lik açıya sahip bir line çizmek için komut satırına <50 yazılır.



DRAW MENÜSÜ

Construction Line : Sonsuz uzunluğa sahip çizgiler çizer.

The image shows the Autodesk AutoCAD 2014 interface. The top ribbon includes tabs for Home, Insert, Annotate, Layout, Parametric, View, Manage, Output, Plug-ins, Autodesk 360, Featured Apps, and Express Tools. The Home tab is active, showing various drawing tools like Line, Polyline, Circle, and Arc. A help window for the Construction Line tool is open, displaying the following text:

Construction Line
Creates a line of infinite length

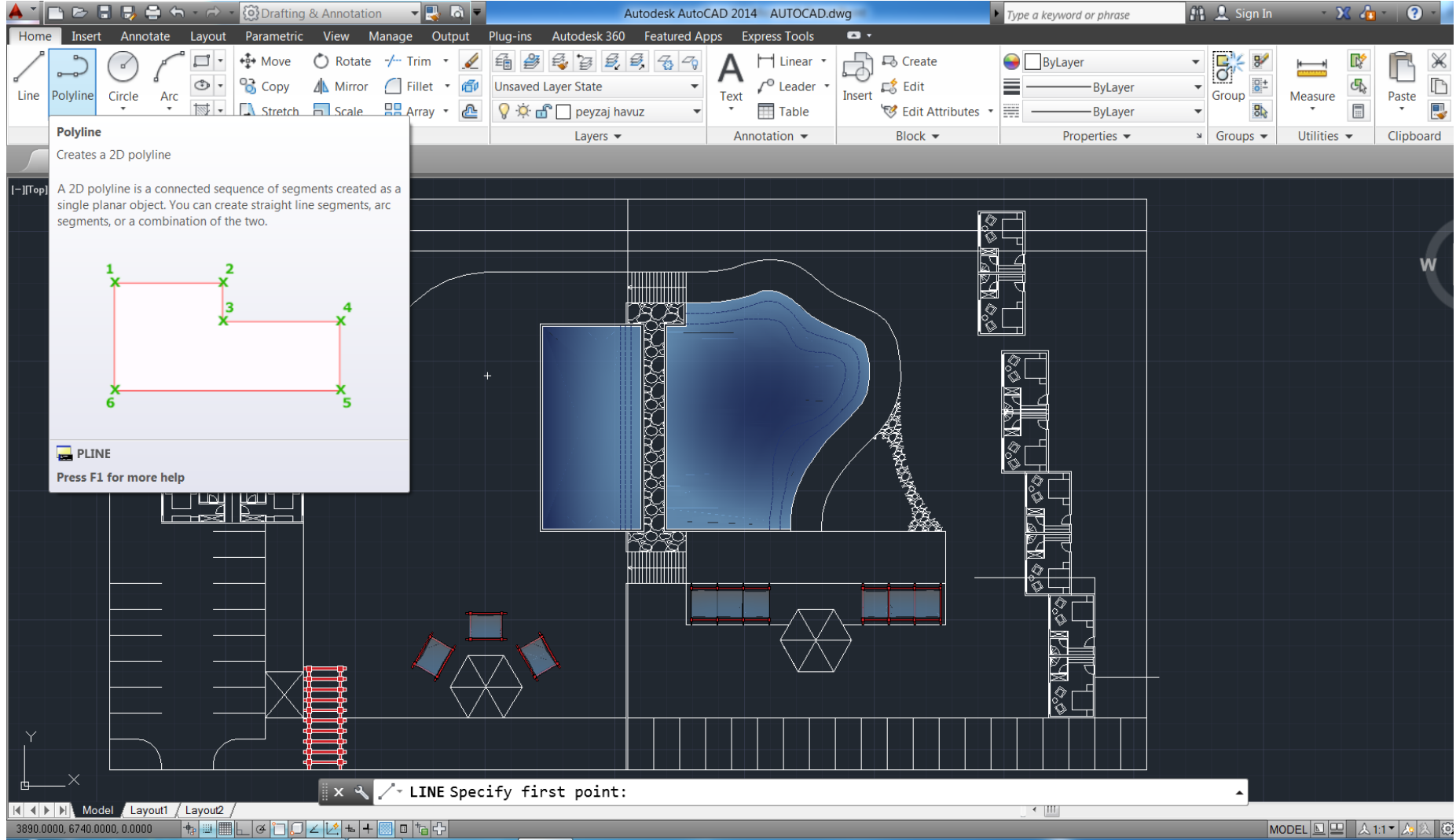
Lines that extend to infinity, such as xlines, can be used to create construction and reference lines, and for trimming boundaries.

XLINE
Press F1 for more help

The main drawing area shows a technical drawing of a building plan with a central pond. The drawing is overlaid with a grid of red construction lines. The status bar at the bottom indicates the current command is "LINE Specify first point:". The bottom left corner shows the coordinates "1210.0000, 6750.0000, 0.0000". The bottom right corner shows the current view is "MODEL" and the scale is "1:1".

DRAW MENÜSÜ

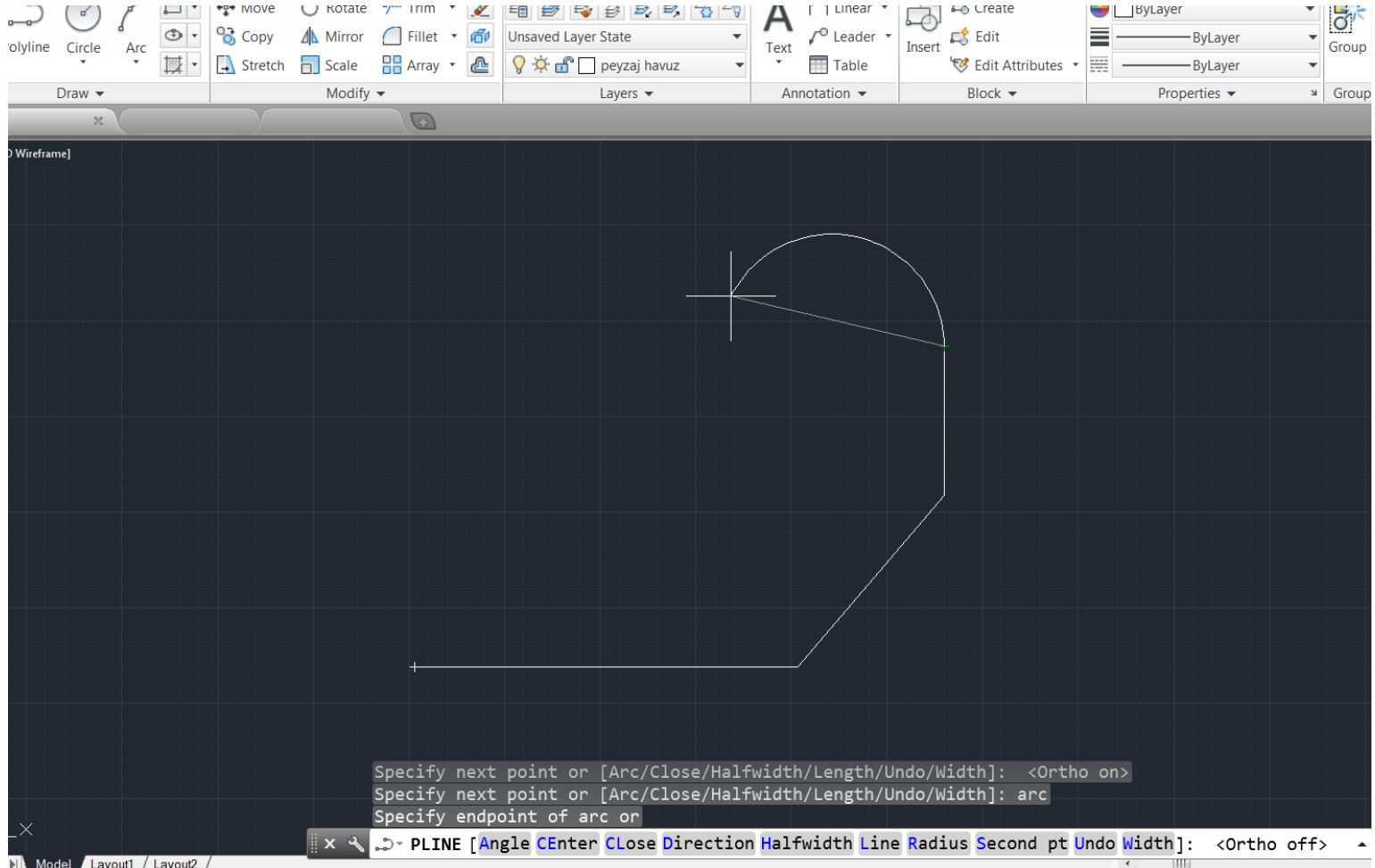
Polyline : AutoCAD ekranında birbiri ardına çizilen çizgilerin tek parça olmasını sağlayan komuttur.



DRAW MENÜSÜ

Polyline yardımcı komutlar

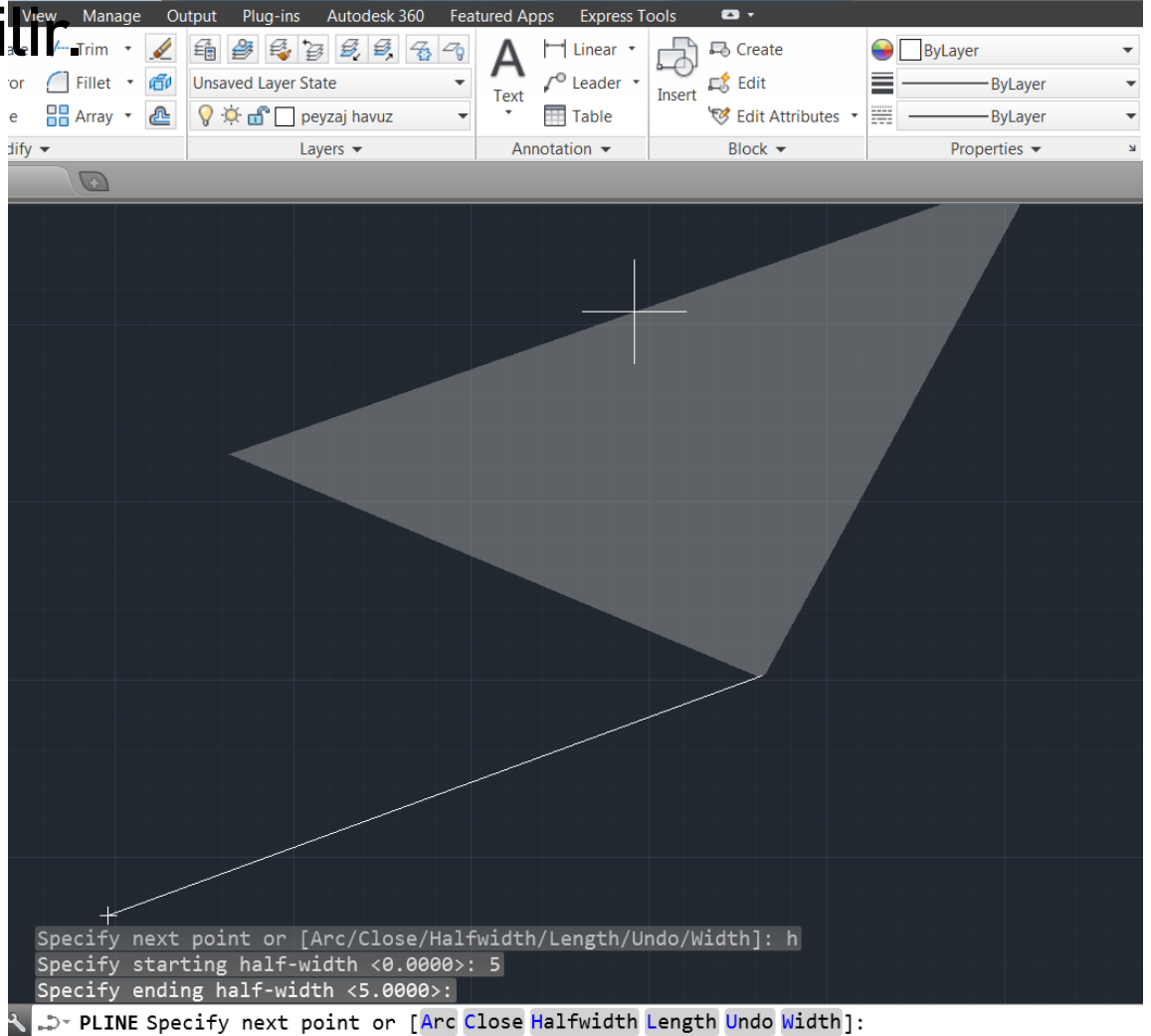
Arc : Polyline komutu aktif iken çizginin devamı olarak yay çizme komutuna geçer.



DRAW MENÜSÜ

Polyline yardımcı komutlar

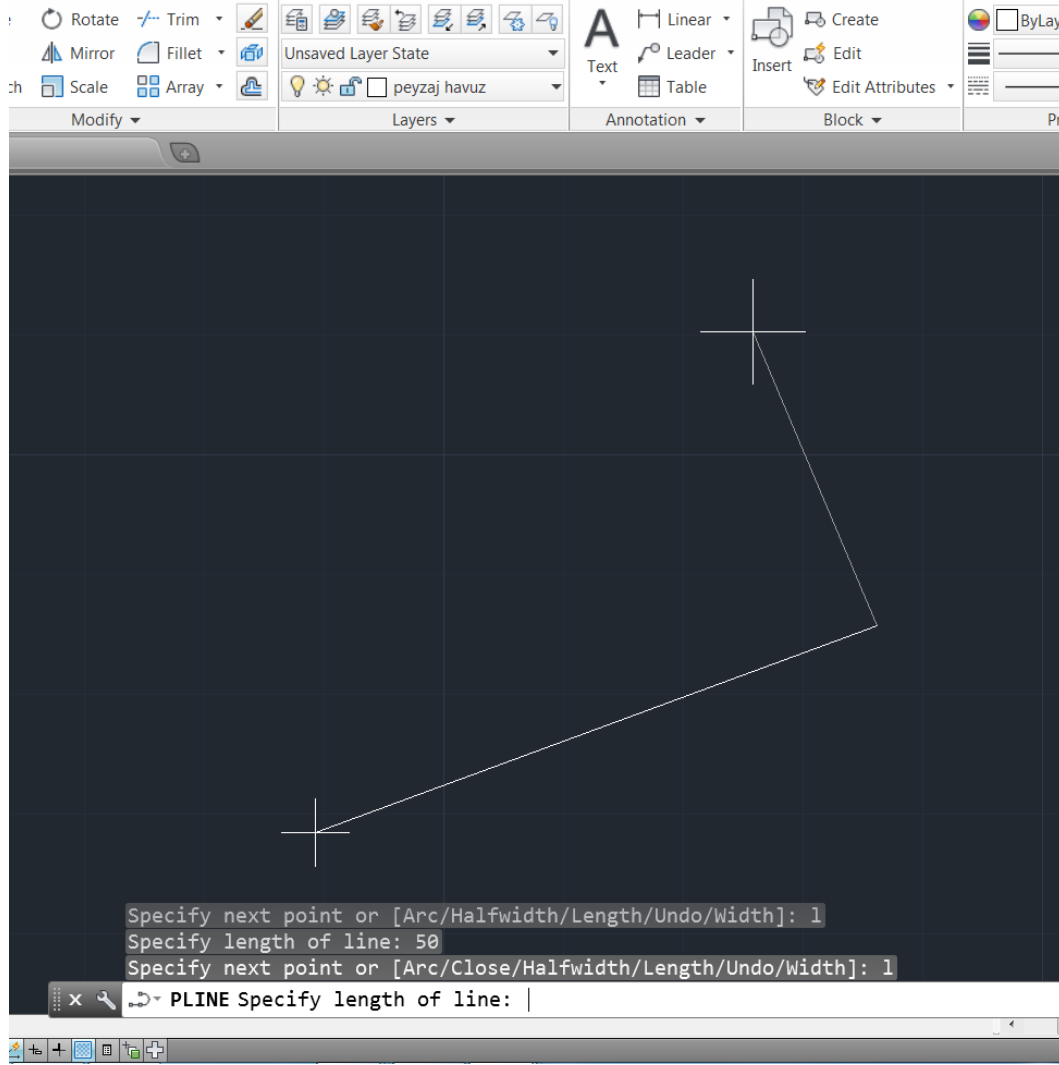
Halfwidth : Polyline komutu aktif iken çizginin yarı genişliği yazılıp çizim aktif hale getirilebilir.



DRAW MENÜSÜ

Polyline yardımcı komutlar

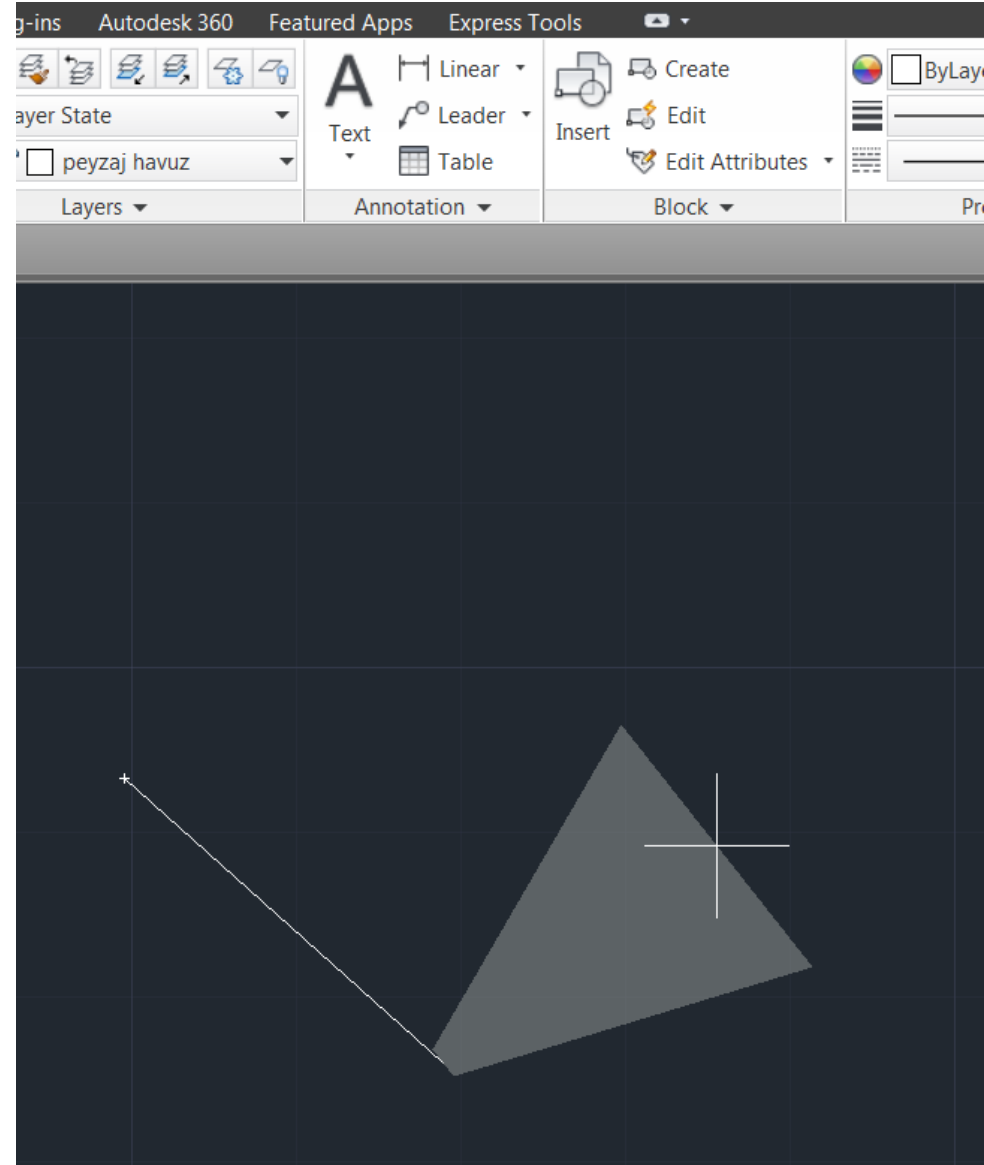
Length : Polyline komutu aktif iken çizgiye uzunluk değeri belirlenir.



DRAW MENÜSÜ

Polyline yardımcı komutlar

Widht : Polyline komutu aktif iken çizginin tam genişliği girilir.



DRAW MENÜSÜ

Polygon : Çokgen (beşgen, altıgen vb.) çizen komuttur.

The image shows the AutoCAD 2014 software interface. The top ribbon includes tabs for Home, Insert, Annotate, Layout, Parametric, View, Manage, Output, Plug-ins, Autodesk 360, Featured Apps, and Express Tools. The Polygon command is highlighted in the Draw panel of the Home tab. A help window for the Polygon command is open, displaying the following text:

Polygon
Creates an equilateral closed polyline

You can specify the different parameters of the polygon including the number of sides. The difference between the inscribed and circumscribed options is shown.

The help window includes two diagrams: a red polygon with a green asterisk in the center and a green asterisk at the top vertex, labeled with a green '2' and a green asterisk '1' inside; and a red polygon with a green asterisk in the center and a green asterisk at the top vertex, labeled with a green '2' and a green asterisk '1' outside.

POLYGON
Press F1 for more help

The background shows a landscape design project titled "ÇEŞME ALAÇATI PEYZAJ PROJESİ". The project includes a central pond labeled "Havuz 345 m²", a smaller pond labeled "Havuz 185 m²", a "Güneşlenme terası 125 m²", and "Snack bar alanı 95 m²". There are also "Bungalov evler" (bungalow houses) and a "Sazlık" (marsh) area. The project is set on a grid with a coordinate system (X, Y) visible in the bottom left corner. The status bar at the bottom shows the current layer as "MODEL" and the scale as "1:1".