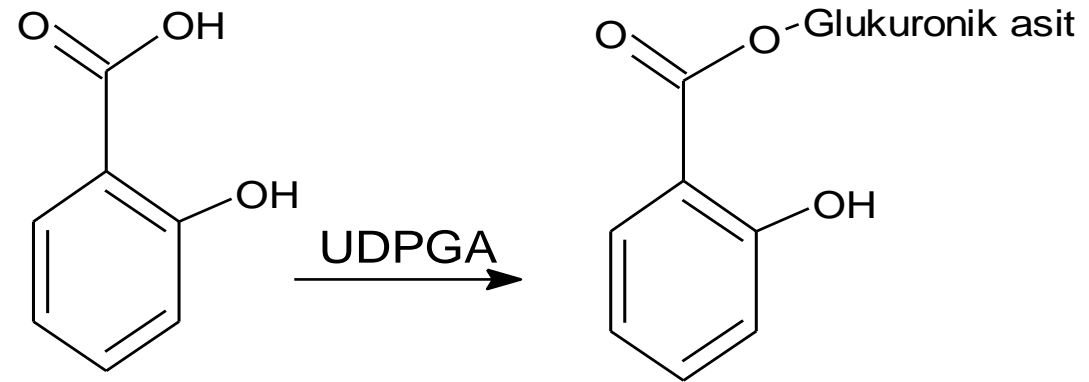


**Phase II (conjugation) reactions** are synthesis reactions in which small, polar, ionizable groups, such as sulfate, glucuronic acid, are enzymatically introduced into the molecule.

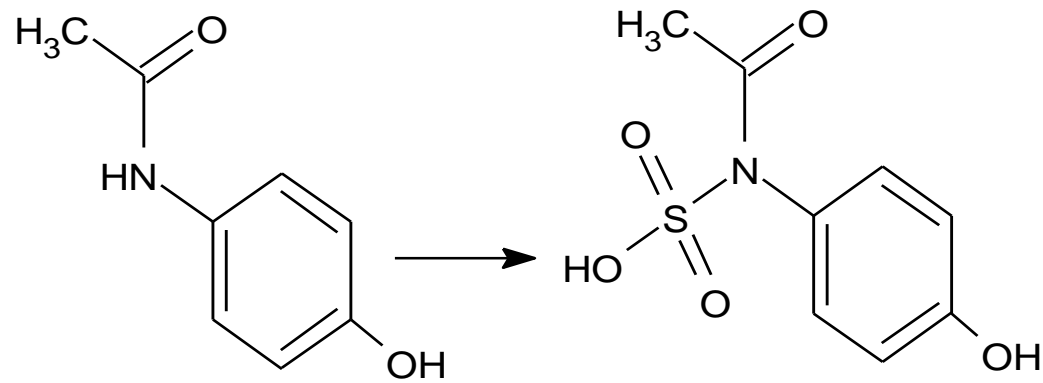
**Conjugates** (Phase II metabolite) formed as a result of these reactions are mostly excreted in urine.

- \* **Glucuronic acid conjugation (glucuronidation)**
- \* **Sulphate conjugation (sulphation-sulphation)**
- \* **Amino acid (glycine, glutamine and other) conjugation**
- \* **Acetylation**
- \* **Methylation**

# Glucuronidation

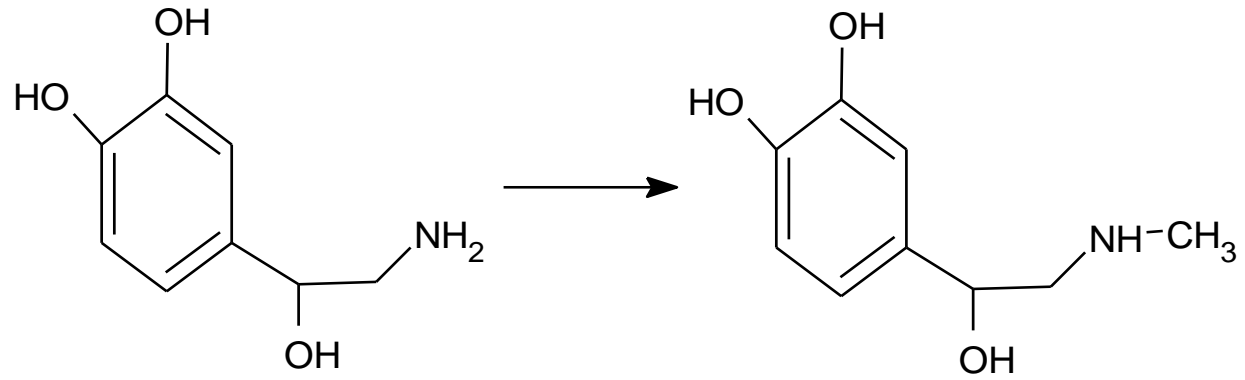


# Sulfation / sulphation



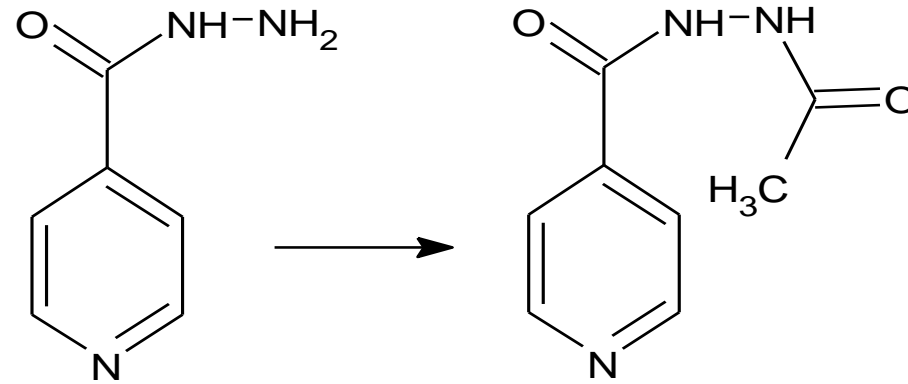
Parasetamol

# Methylation



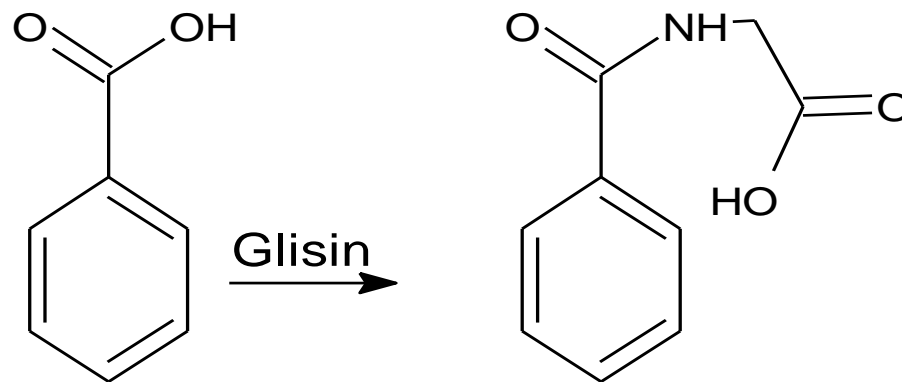
Noradrenalin

# Acetylation



Isoniazid

## Amino acid conjugation



Benzoik asit

Hippürik asit