

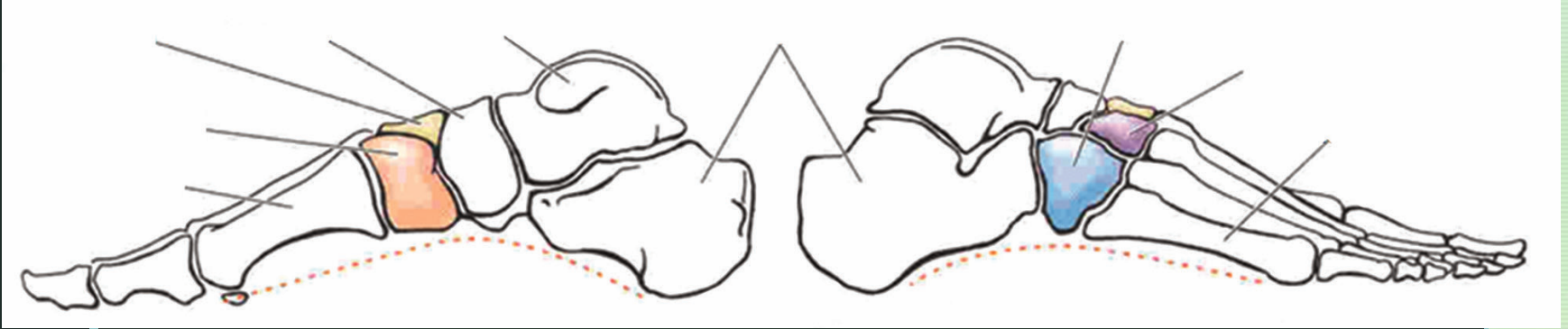
# Ayak patolojileri epin calcanei, peplanus, pescavus, parmak patolojileri, hallux valgus

10. Hafta

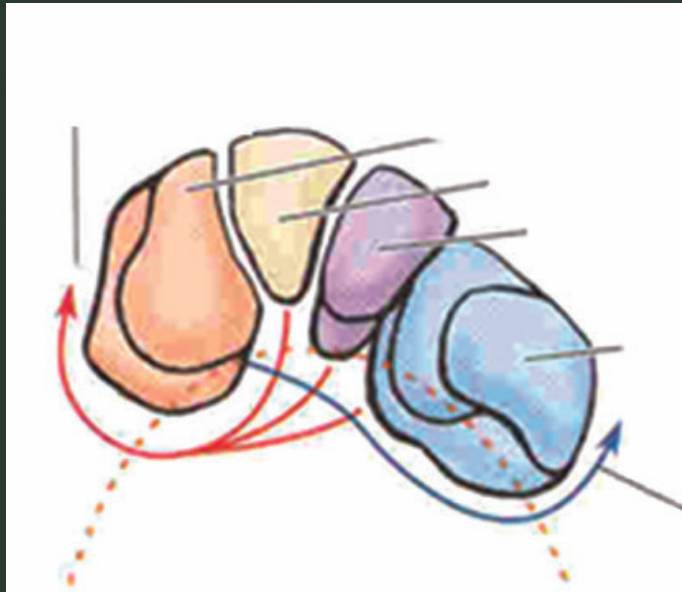
Prof.Dr. Serap Alsancak



## Arkları etkileyen kaslar?



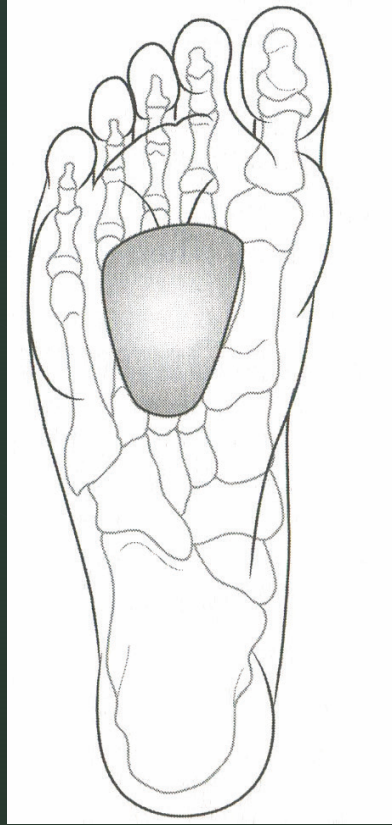
m. tibialis anterior  
m. tibialis posterior  
m. peroneus longus  
m. flexor hallucis longus



# Ark dūřüklük ve yűkseklik deęerlendirmesi

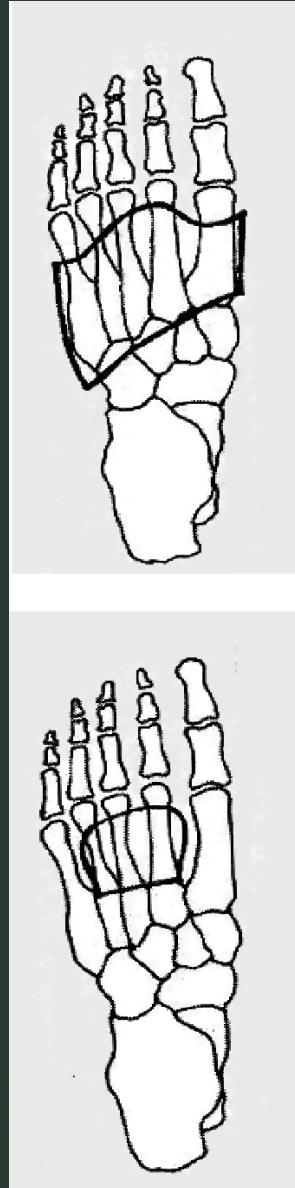


# Ayak izi deęerlendirme

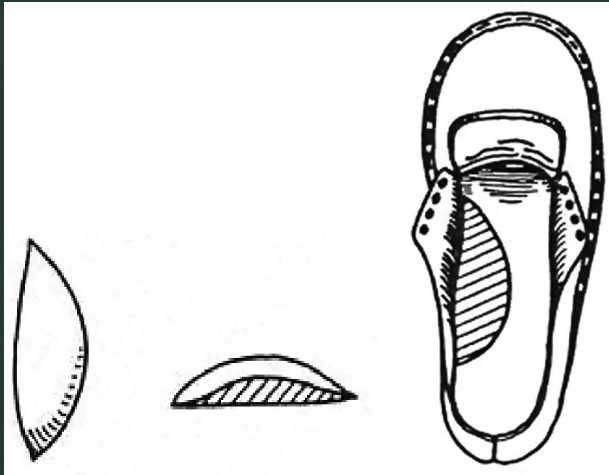




# Ark destek bölgeleri ve desteklerin özellikleri

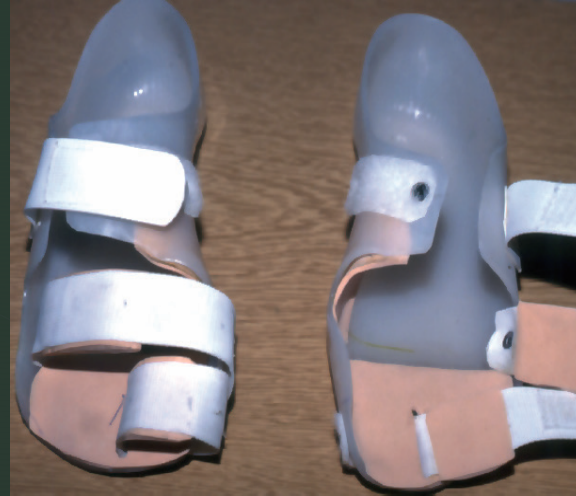


Ark takviyelerinin ayaktaki yerleşim alanları sabit ve portatif uygulamalar ve özellikleri



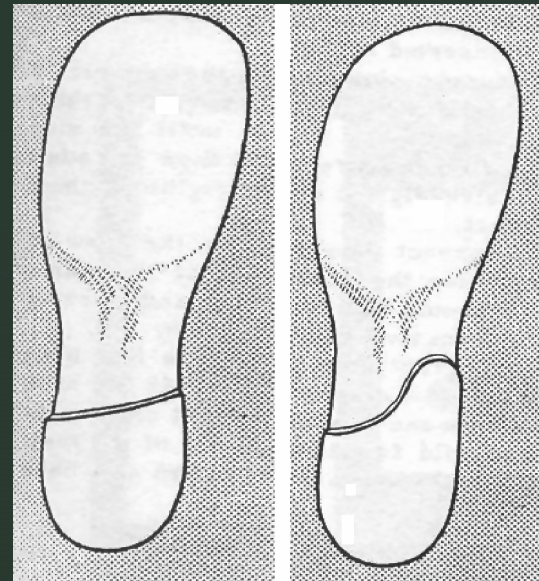
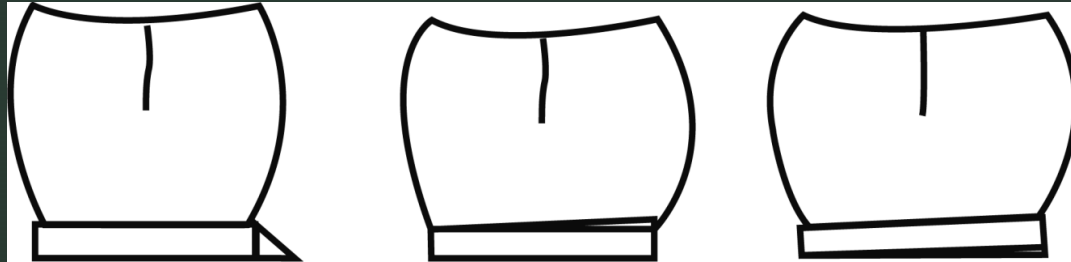
Takviyenin genişliği ayak genişliğinin 2/3'ünü kaplar, yüksekliği 6-9 mm arasındadır. Bu takviyeler sabit veya portatif olarak uygulanır

Hallux valgus 3PPS ile korreksiyonunda farklı tip ortotik yaklaşımlar ve korrektif kuvvetler ?





# Calcaneal valgus/varus





# Calcaneal epin

