

CLINICAL EXAMINATION OF LARGE ANIMALS





Think of physical and chemical restraint
as your second option. Good horse handling
and psychological restraint starts before we even touch the horse.



Nose twitch







Iowa State 1913



(a)



(b)



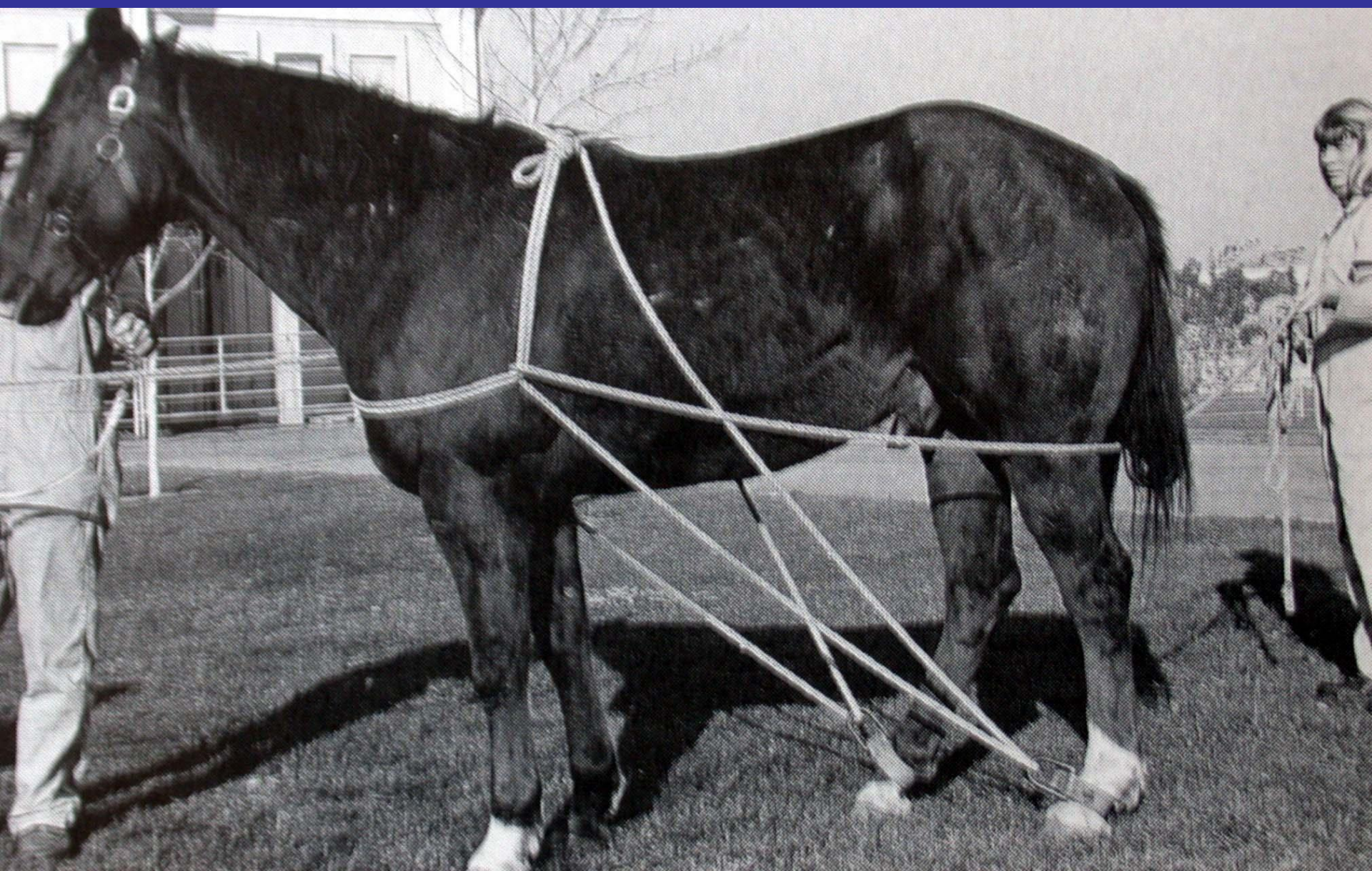
(c)



(d)

Figure 2.23 Restraint of the horse in the stocks. (a) The horse is led to the back gate of the stocks, with the handler walking in front of the horse. (b) The handler walks through the back gate in front of the horse,

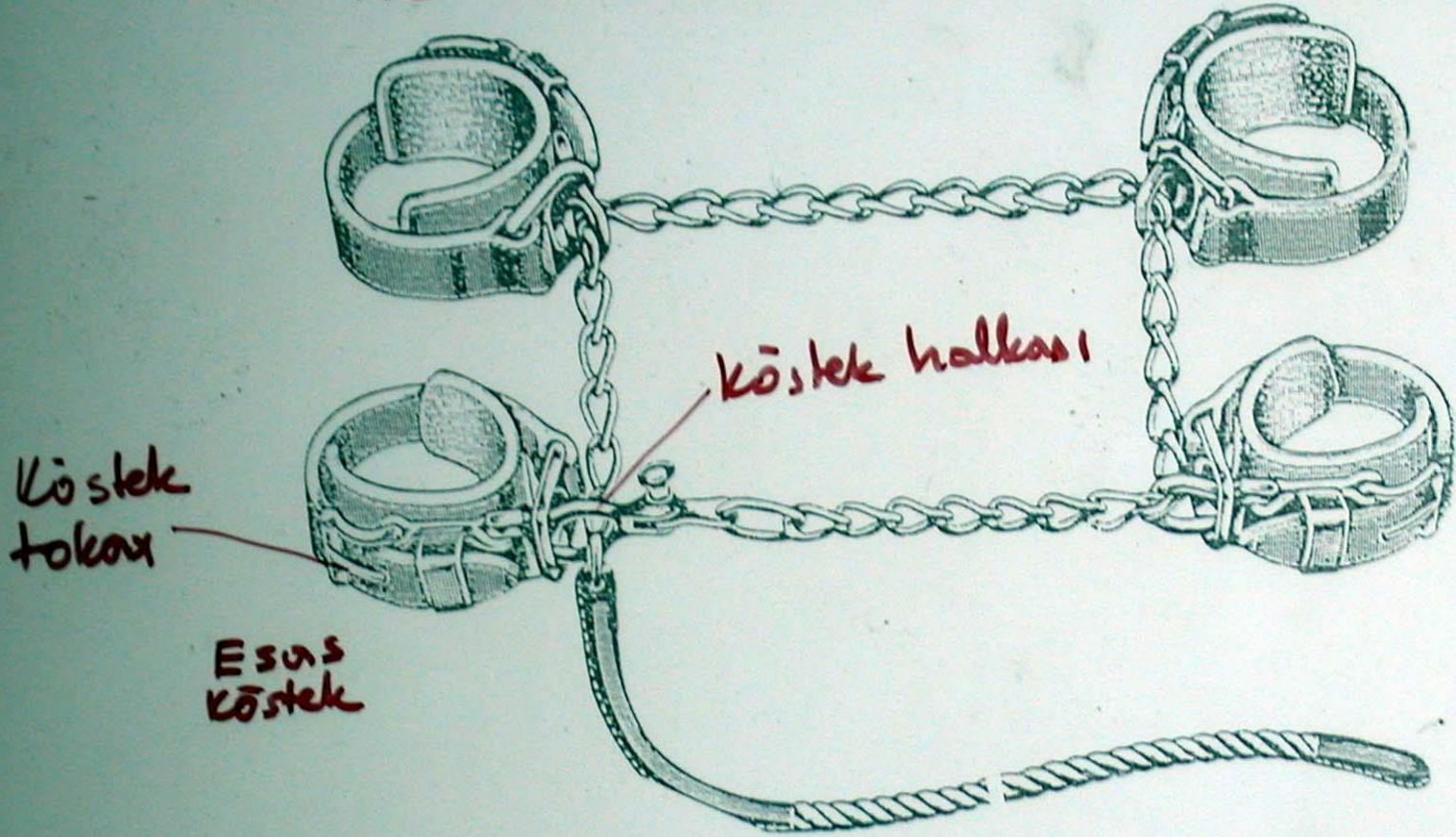




Ankara usulü yatırma



Adi köstek

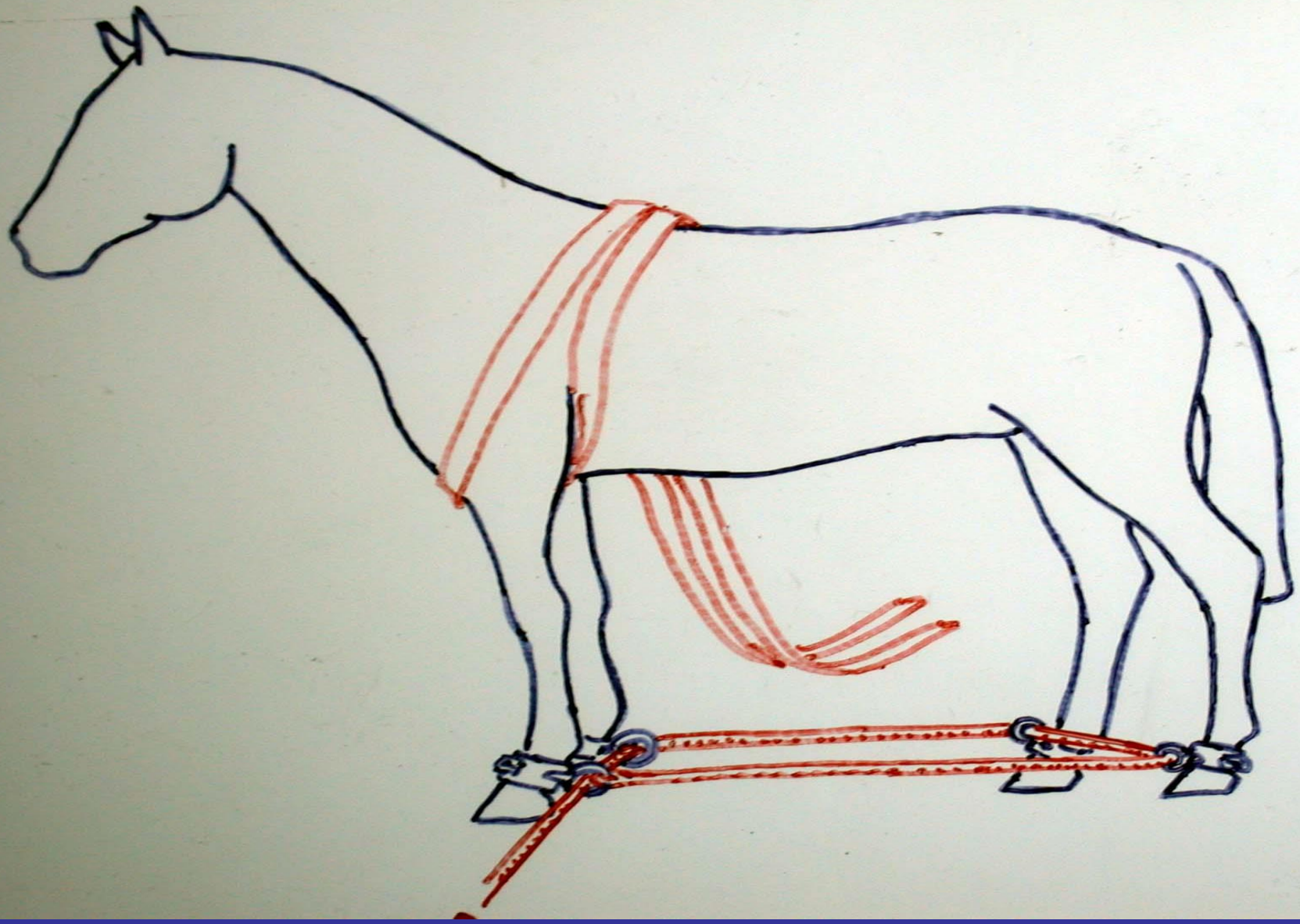


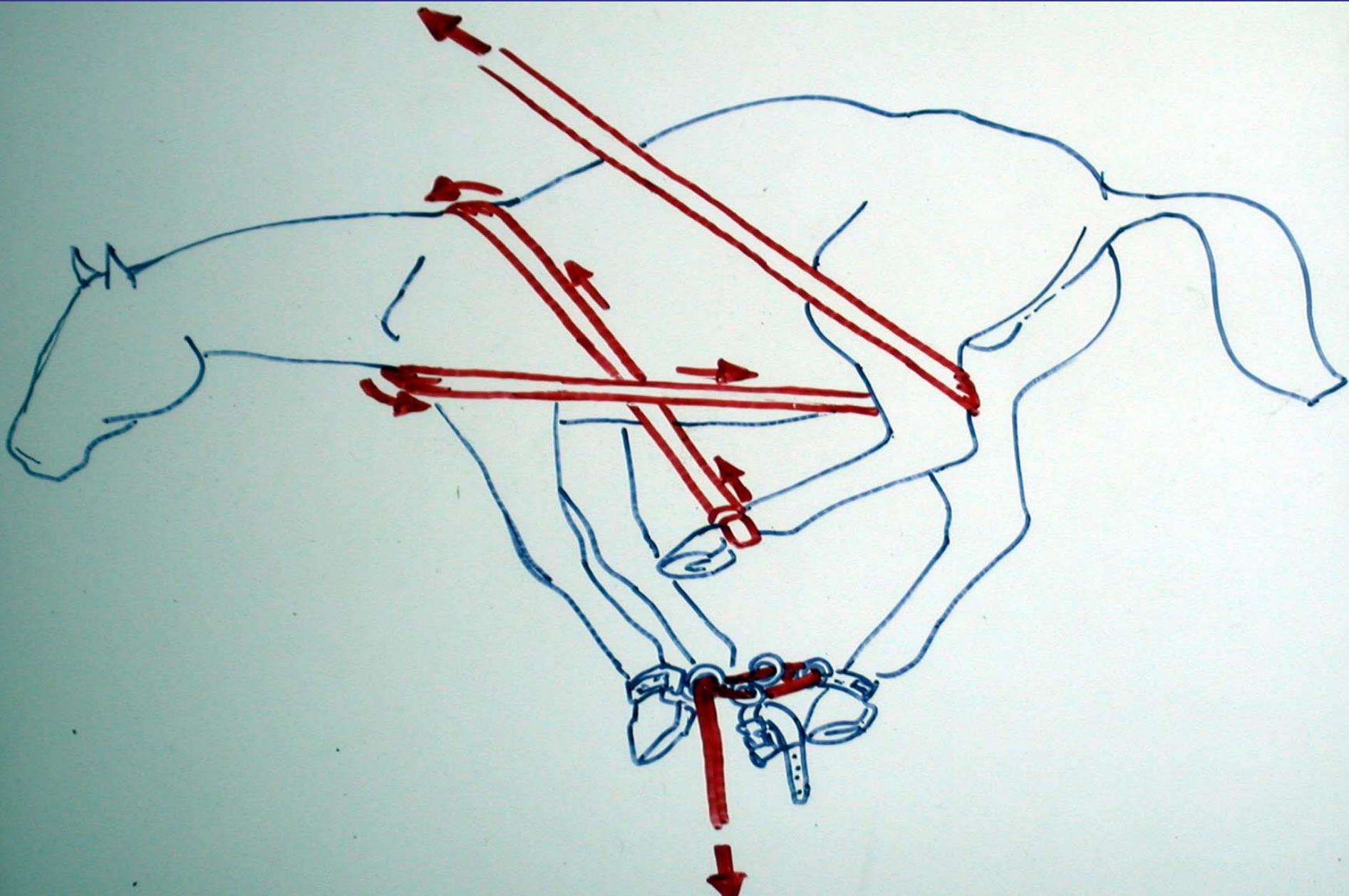
Köstek tokası

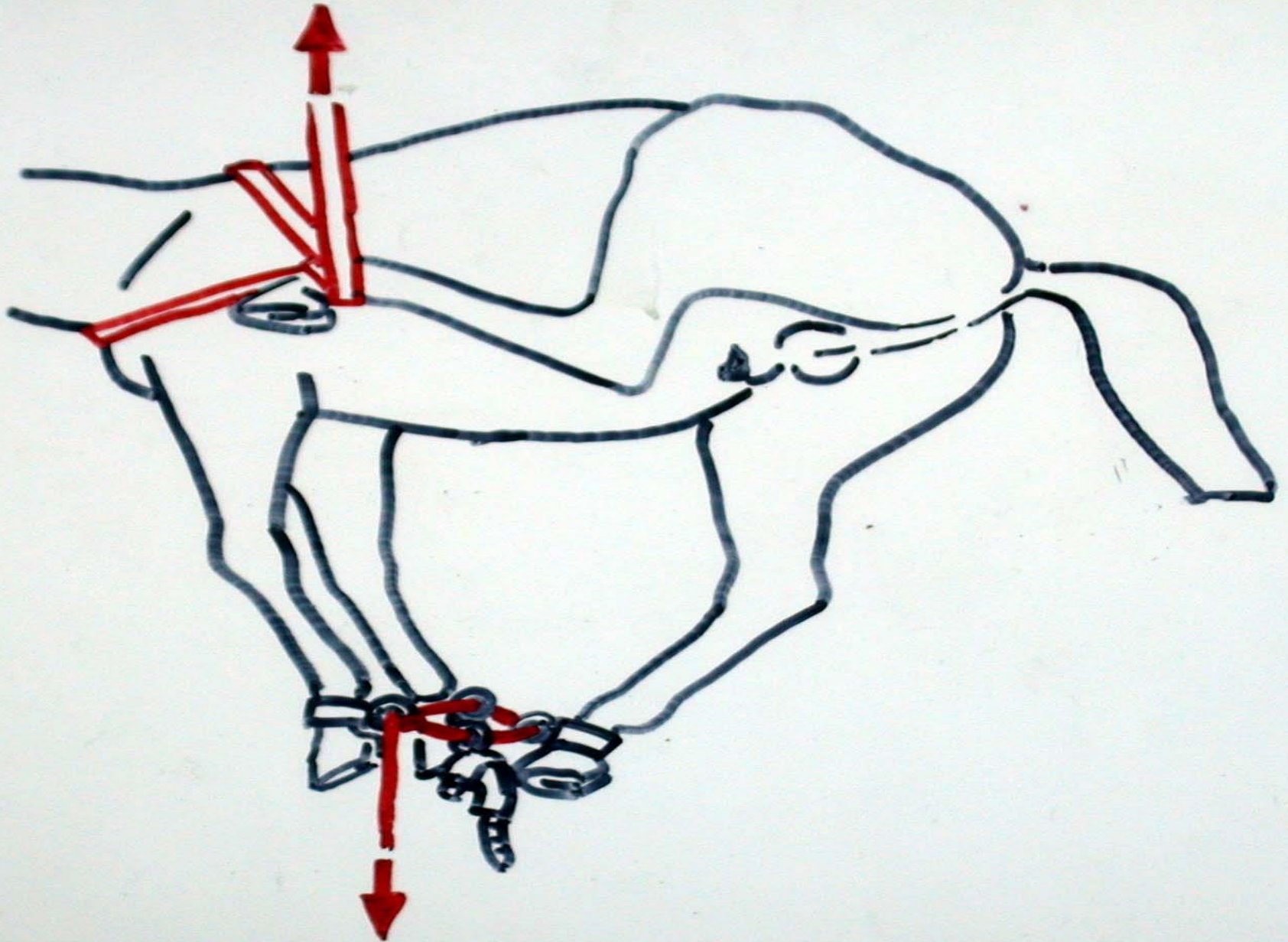
Esus köstek

Köstek halkası

Yatırma takımı } Kösteklerle yatırma
Organ " BERLİN USİSLÜ YATIRMA











Clinical and Physical examination of the cattle

- History
- Physical appearance
- Subtle Clinical signs
- Diagnostic workup

Signalment – History

Describe the animal (breed, age, sex, reproductive status e.g)

Environment - feeding

Chief complaint

Vital signs (body weight, temperature, HR, RR, CRT)

Cardiovascular system
Respiratory system
Gastrointestinal system
Urogenital system
Musculoskeletal system
Nervous system

Instruments



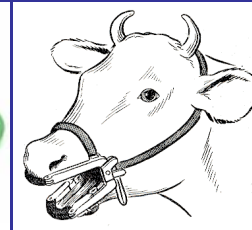
Hammer



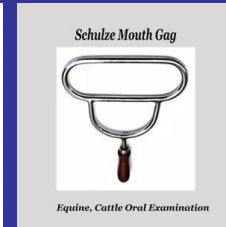
ophthalmoscope



stethoscope



Oral speculum



Same as J-34c only featuring blade, right- or left-curved.



J0034cn

Hoof Knife. Left hand.
Hoof Knife. Right hand.

Knife.



J0034o

ver. Blade 2¹/₂"L.



J0034s

Hoof Shear. Heavy handles as with long spring and safety lily designed tempered steel blades. Stainless steel.



J0131m

Hoof Groover. This hoof groover has an elliptical doughnut-shaped blade. Elliptical opening is 2cm x bottom portion is sharpened. It is used for digging out or curetting hoof. Stainless steel handles. 6¹/₄"



J0032hg

J0030a Hoof Nippers, 1 1/2" L.



J0030a

J0030b Jaw-Vel Standard Hoof Nippers, Stainless Steel, 1 1/2"



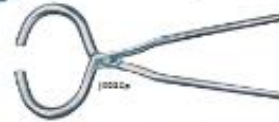
J0030b

J0030c Adjustable Hoof Nippers. This sturdy metal hoof nipper has jaws of stainless steel and a screw adjustment for every size hoof.



J0030c

J0030d Large Hoof Nippers, Heavy Duty, Stainless Steel, 1 1/2"



J0030d

J0030e Below Large Hoof Nippers, 2 1/2". Also jaw opening is 25mm (1") which is much larger than standard nippers. Jaw depth and large blade for better hold. Stainless.



J0030e

J0030e Hoof Nippers. Main design allows for adjustable jaws over entire hoof surface. The jaws remain parallel for more even and gradual pressure. The handle is ergonomically shaped and has a locking thumb hole to hold the leg or for stabilizing the hoof. Stainless steel. Patented.



J0030e

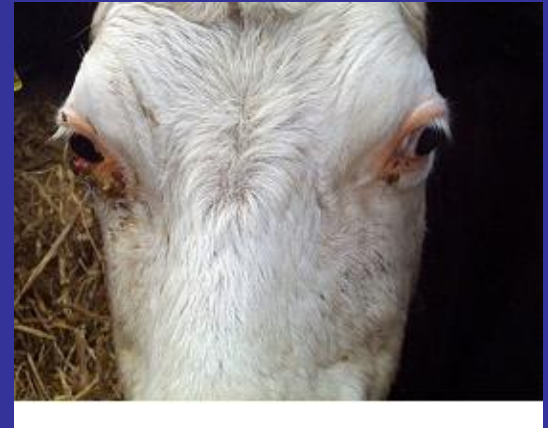
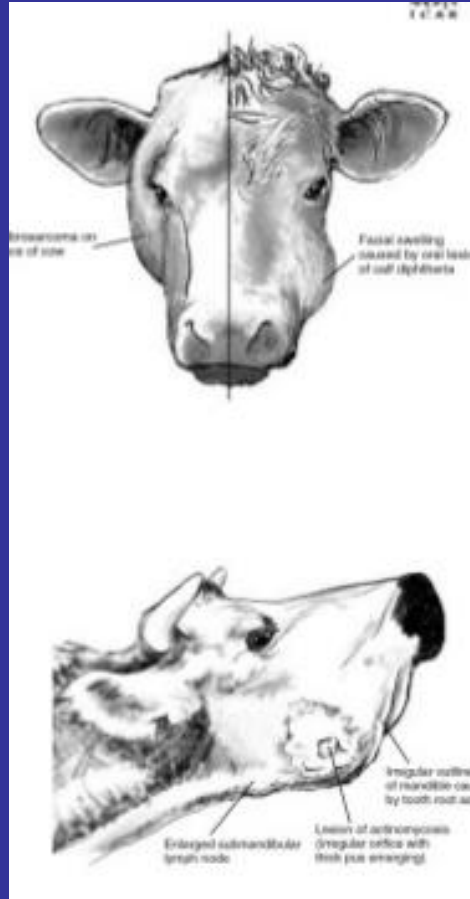


Inspection
Symmetry
Deviation from normal
Behavior (allert – responsive – dpressed)

Body condition 8 Fat – cachectic)



Check Head and neck



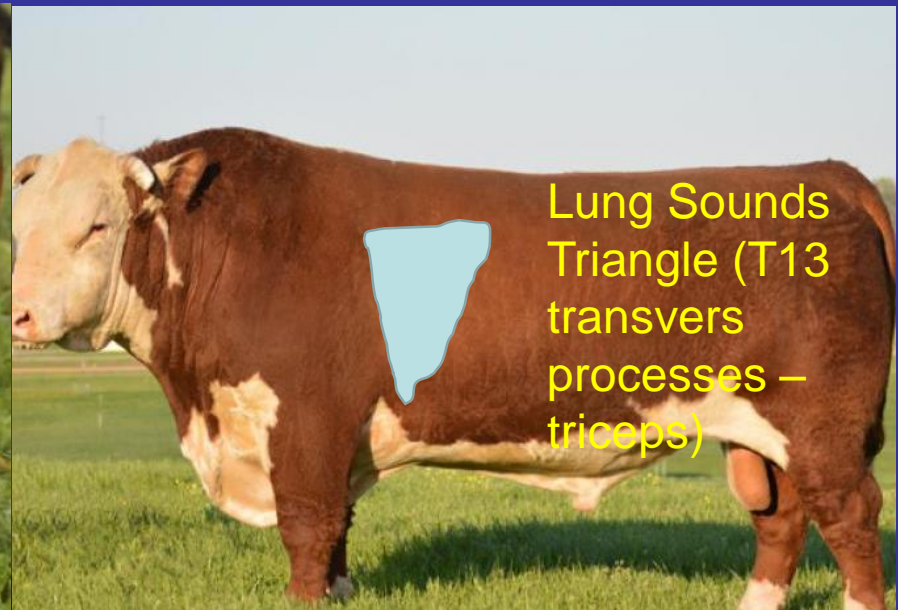
Eye patch applied after treatment of pinkeye



Start the examination from the left
from the rear to the front



Heart
Intercostal 3-5
Adult 48 – 84
Calves 70 -100



Lung Sounds
Triangle (T13
transvers
processes –
triceps)

Peripheral Lymph Nodes

- Prescapular
- Prefemoral
- Supramammary
- Parotid
- Submandibular



Abdominal Auscultation and Percussion

- Simultaneous Auscultation and Percussion – “Pinging”
- Entire Abdomen



Abdominal Auscultation and Percussion

- Simultaneous Auscultation and Percussion – “Pinging”
- Entire Abdomen



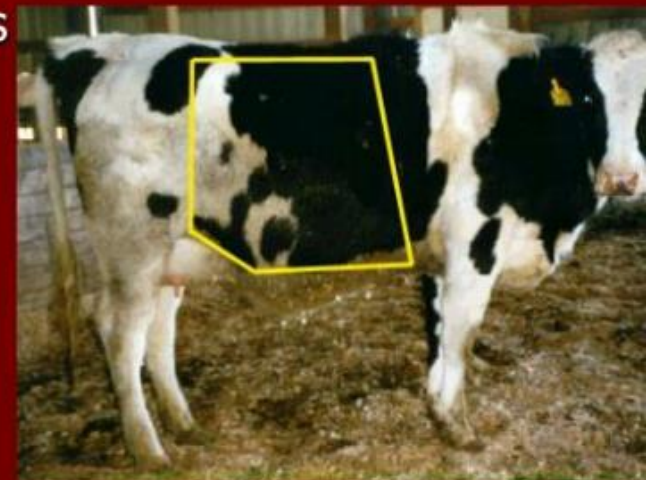
Respiratory System

- Mirror Image of Left Thorax
 - Crackles
 - Wheezes
 - No sounds
 - Emphysema



Abdominal Auscultation and Percussion

- Simultaneous Auscultation and Percussion – “Pinging”
- Entire Abdomen



Rt side Abdomen
Simultaneous auscultation percussion

Abdominal Auscultation and Percussion

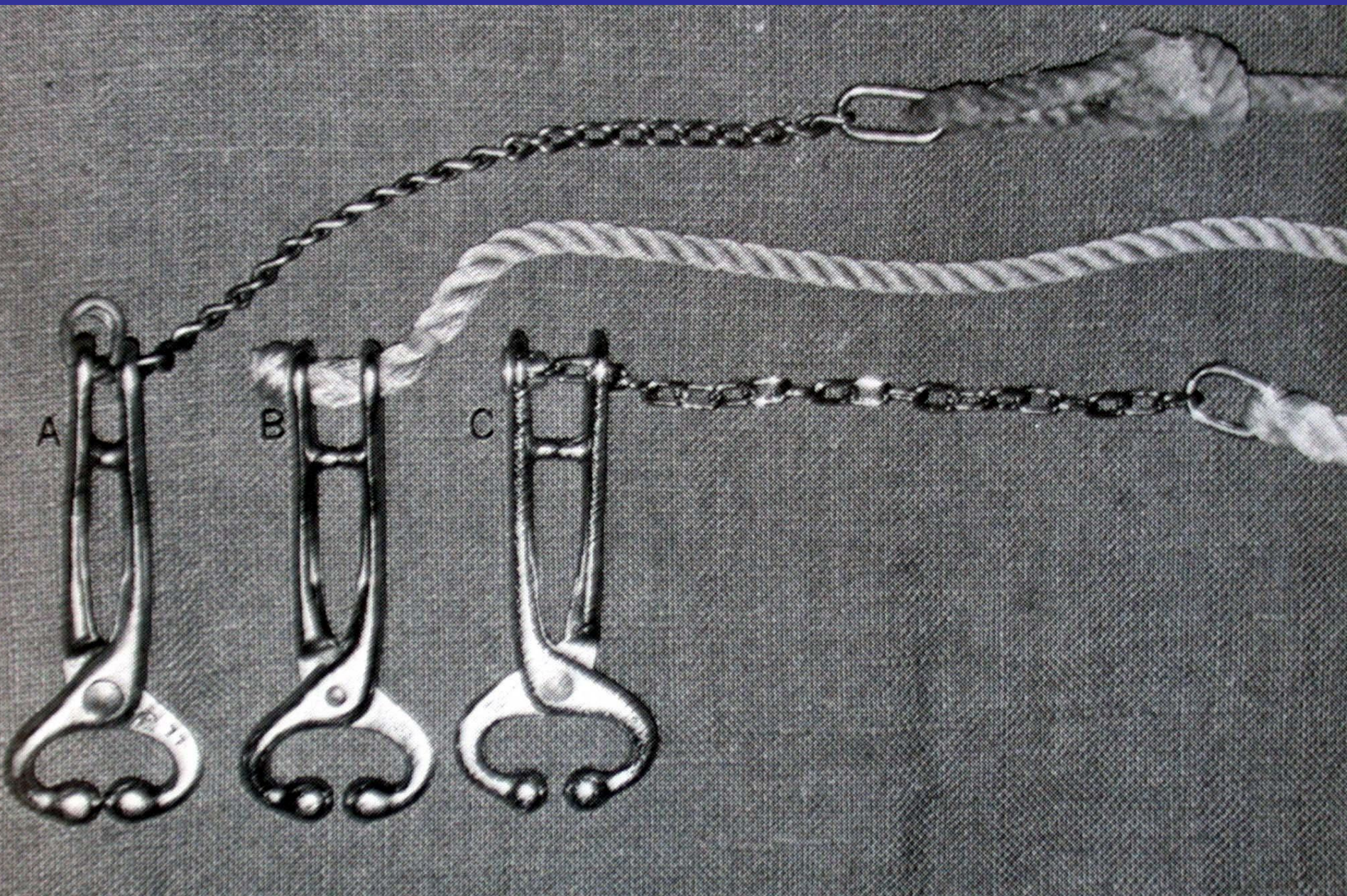
- Simultaneous Auscultation and Percussion – “Pinging”
- Entire Abdomen



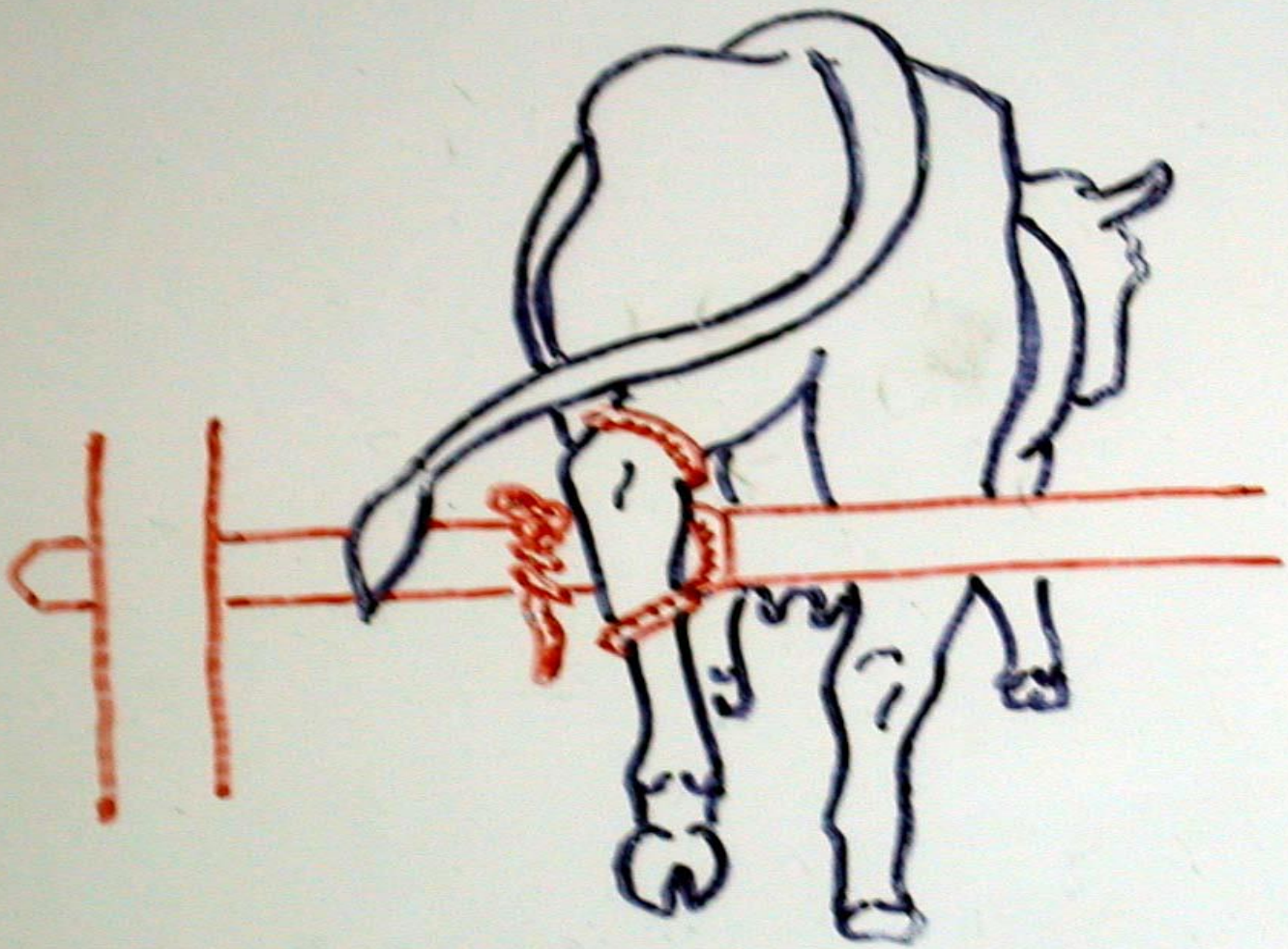


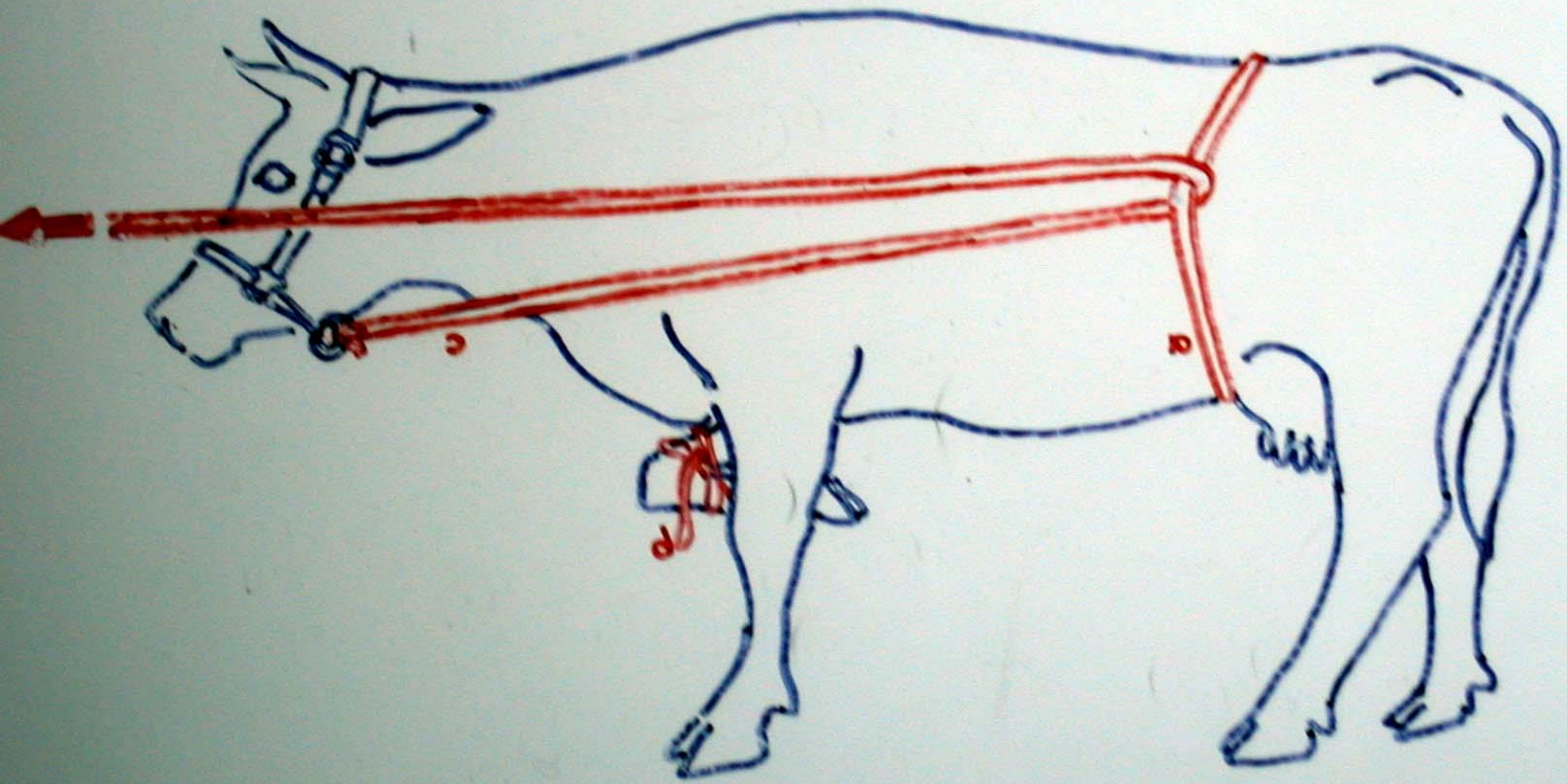












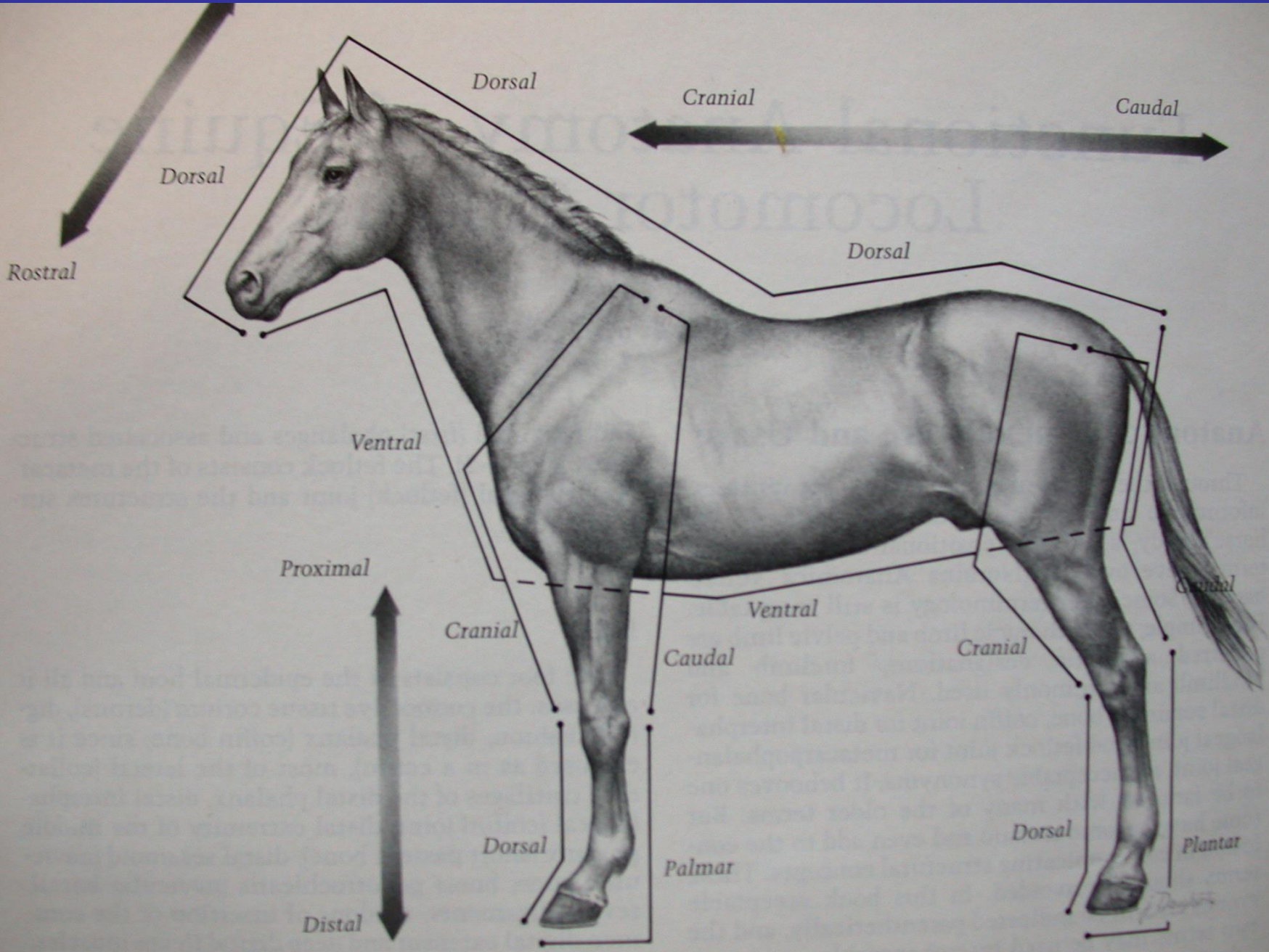






EKSTREMİTELERİN MUAYENESİ

TOPALLIK MUAYENESİ



- ANAMNEZ
- İNSPEKSİYON
- PALPASYON
- PASİF HAREKET UYGULAMALARI
- RADYOLOJİK MUAYENE
- ULTRASONOGRAFİK MUAYENE
- LOKAL İNFİLTRASYON ANESTEZİSİ
- (PUNKSİYON)

- Lamenes
- Arthrogenen
- Osteogen
- Tendogen
- Miyogenous veya
- Nörogenic





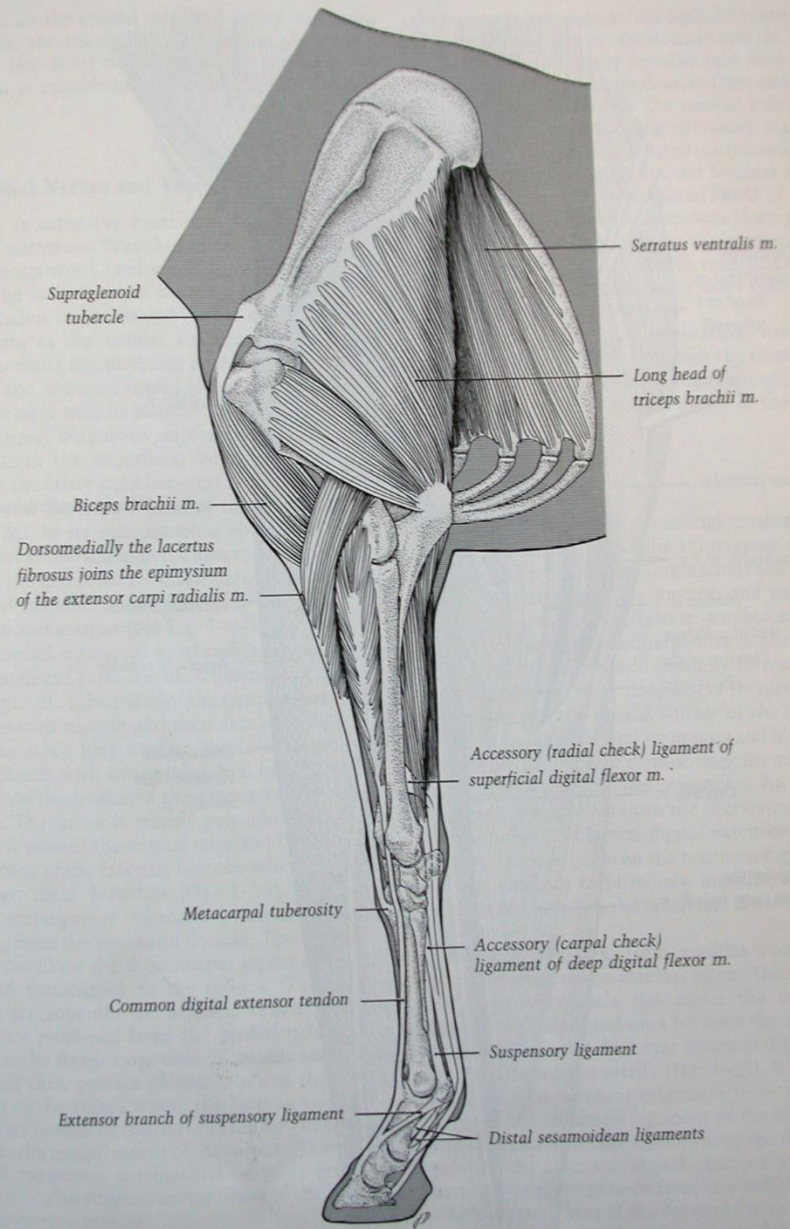
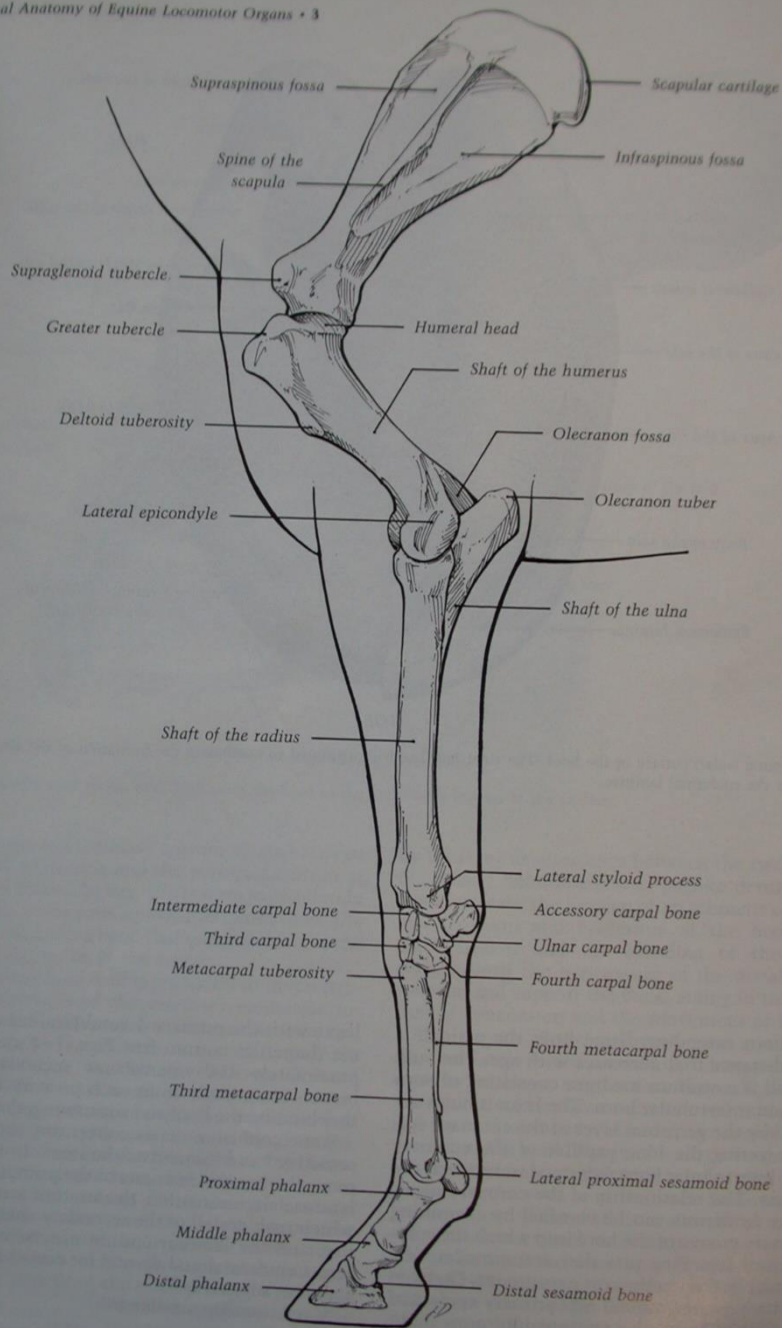
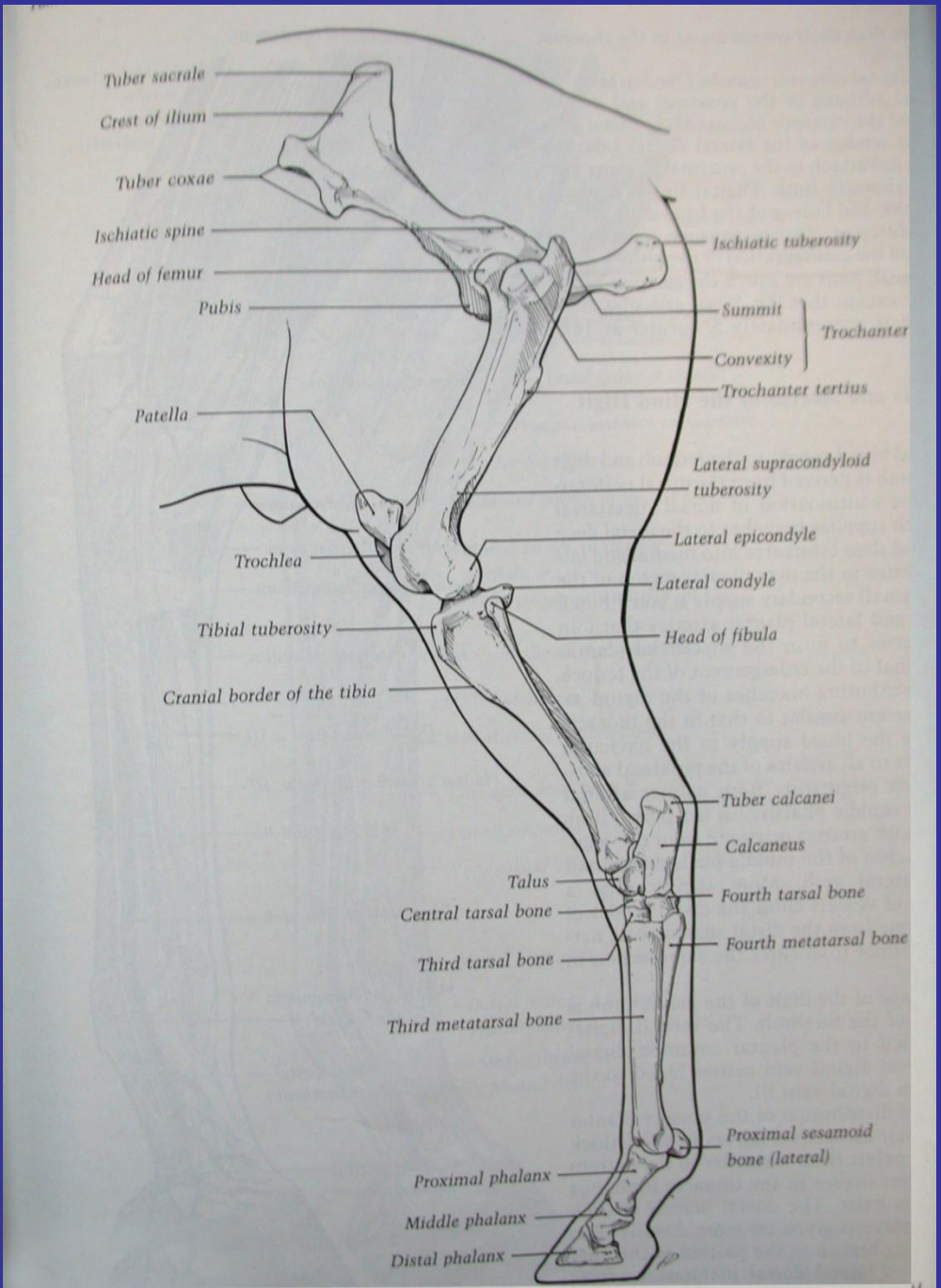
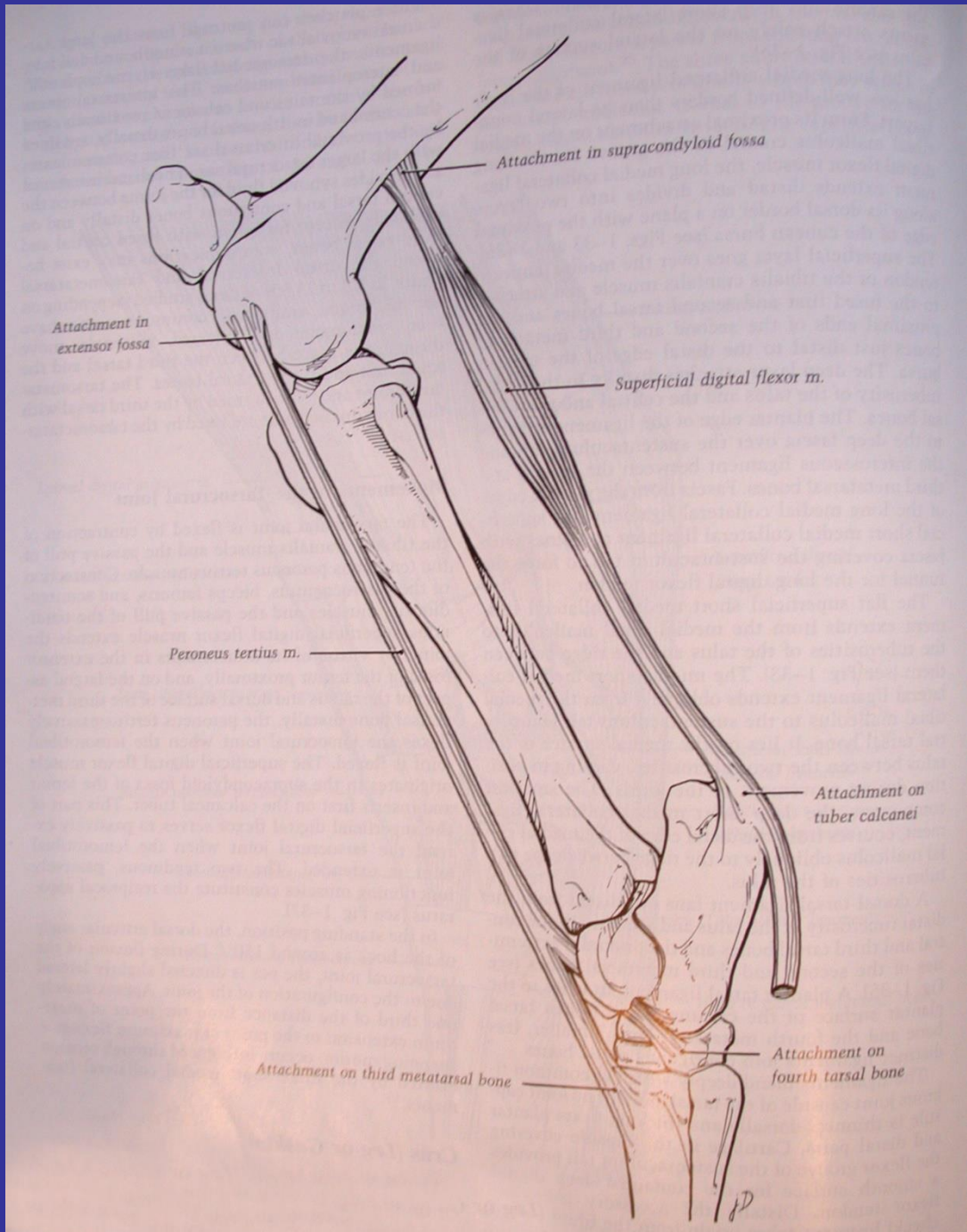
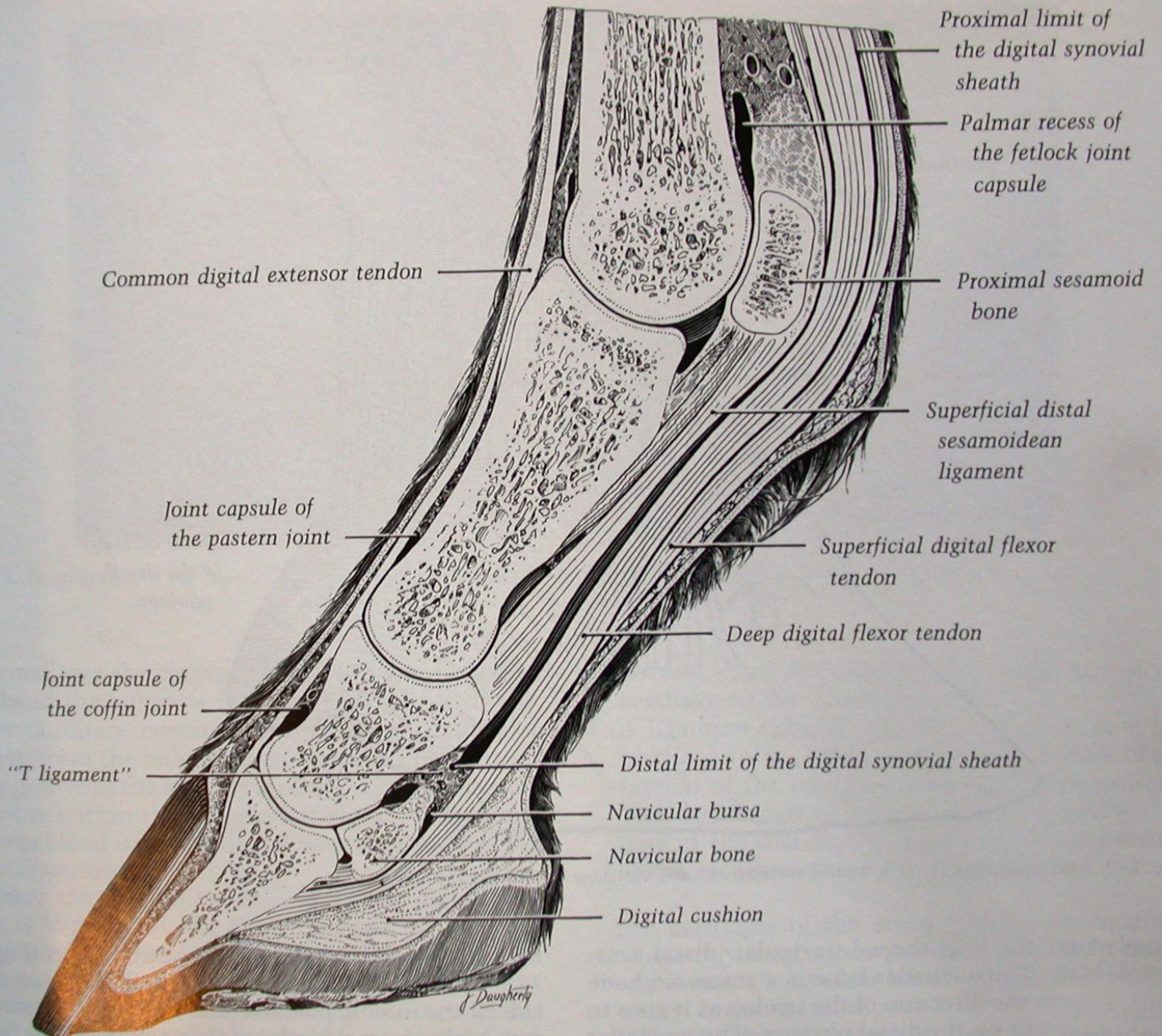
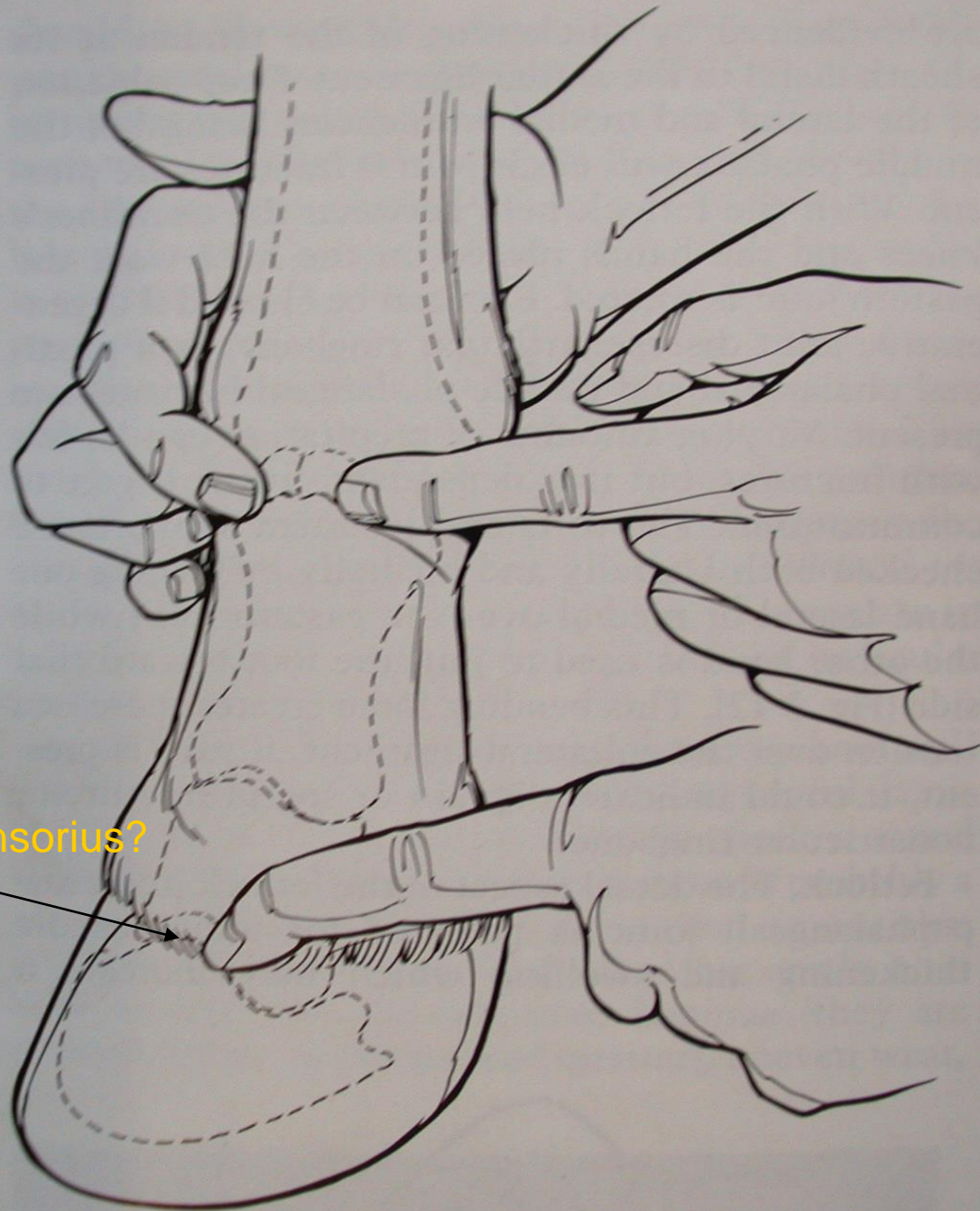


FIG. 1-22. Stay apparatus of the thoracic limb.





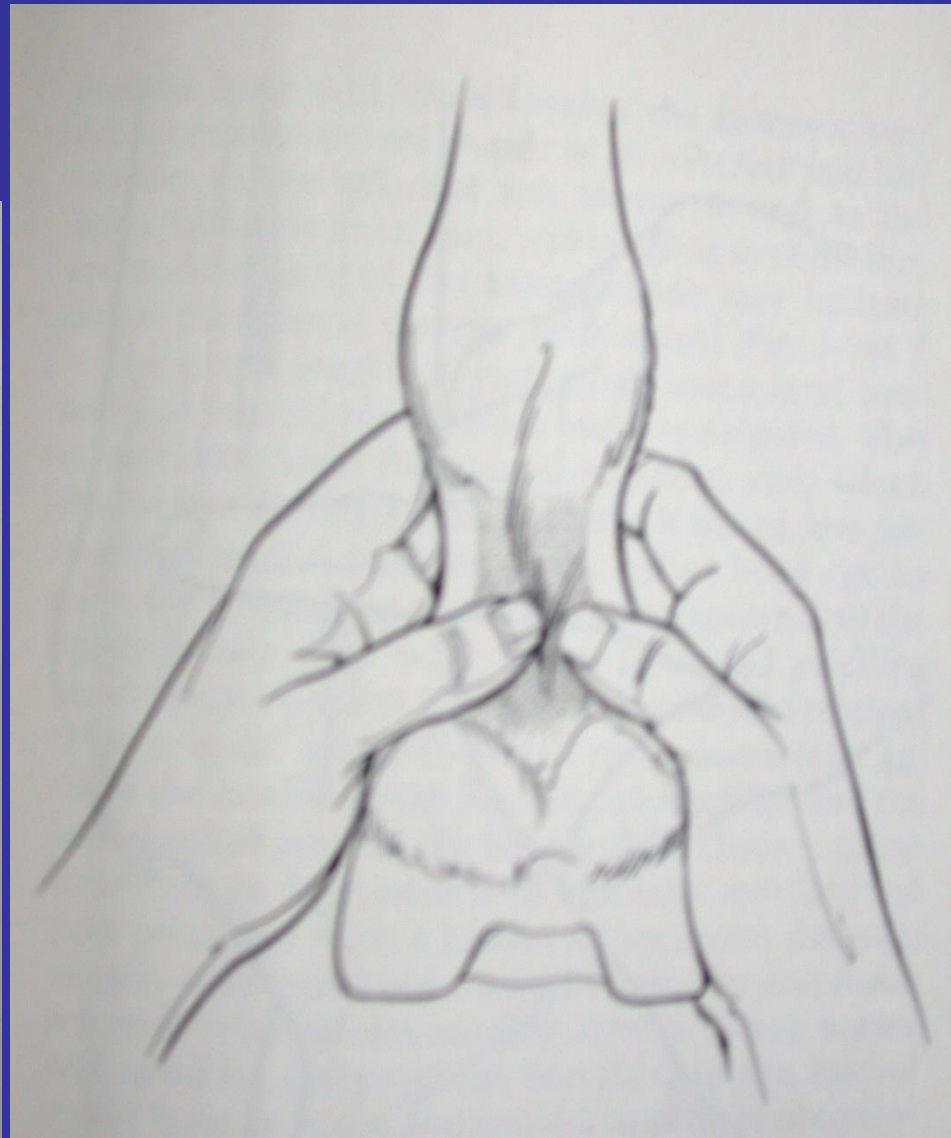




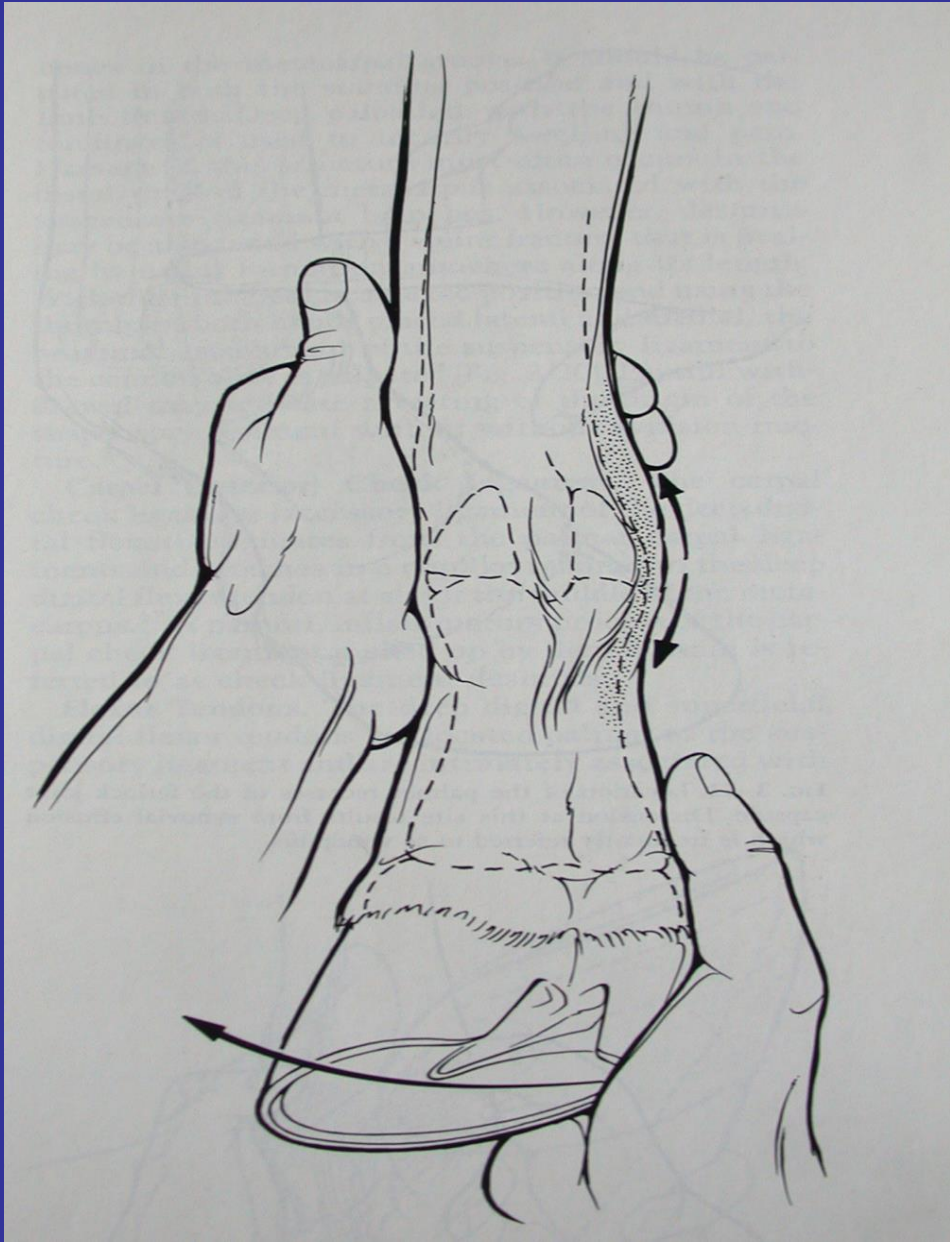
Fracture of Proc. Ekstensorius?

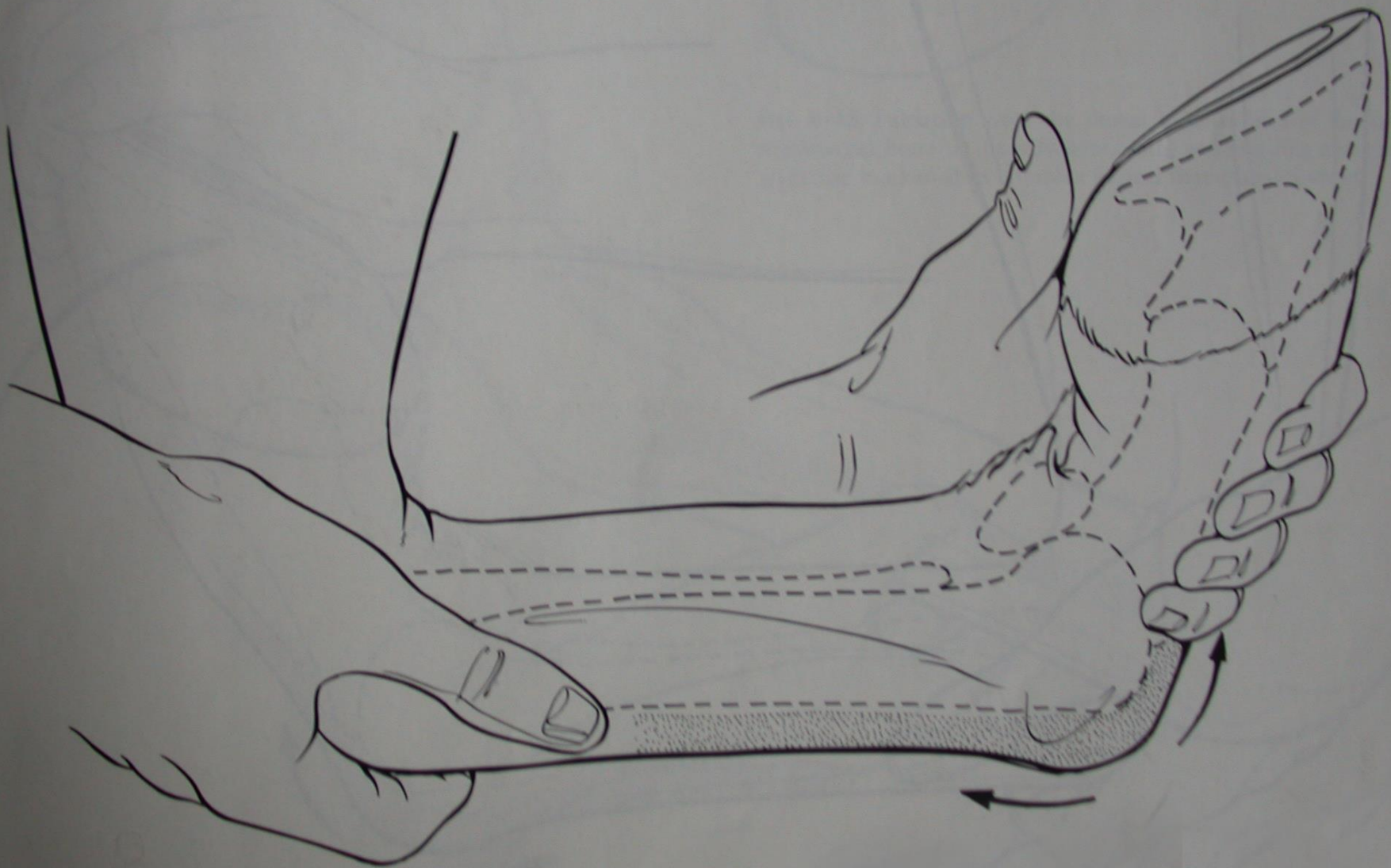


Taç eklemi muayenesi

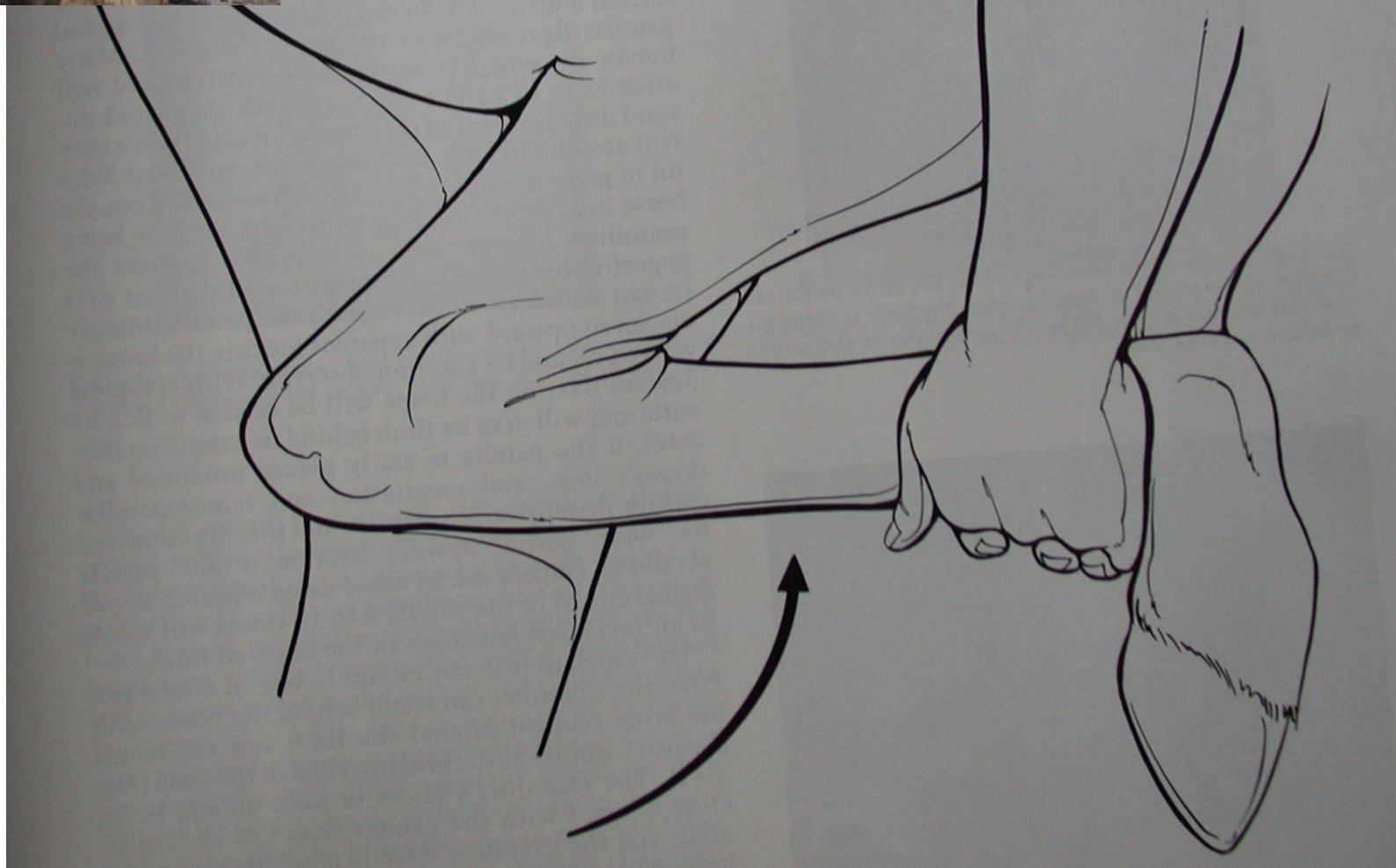


Distal susam kemiđi
Profund tendo muayenesi









Rudimenter metakarpal kemik muayenesi



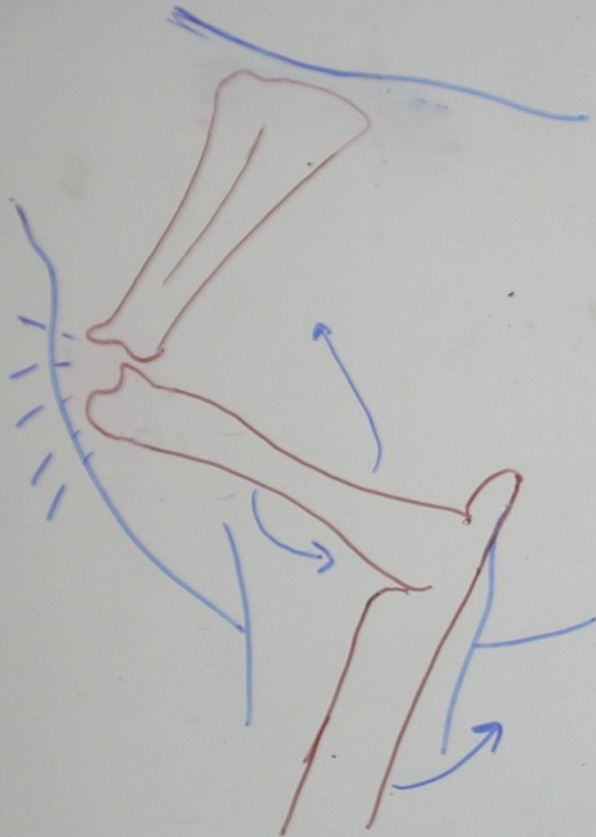


Fig. 144. - dist. of the large

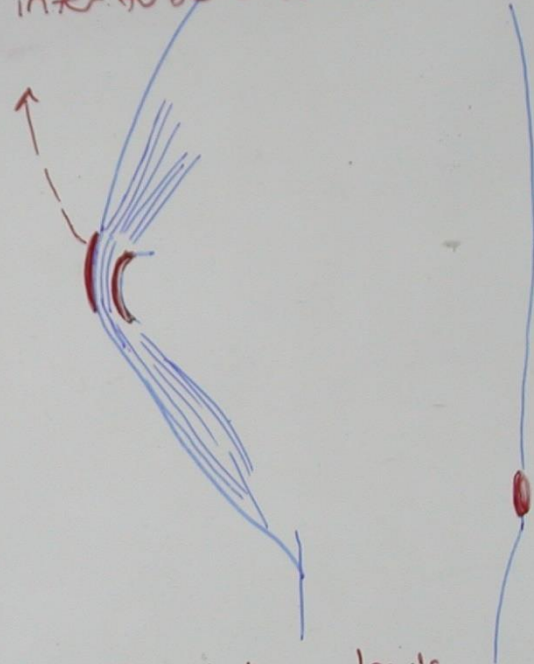




① Bursitis intertubercularis



Bursa intertubercularis



Bursa intertubercularis

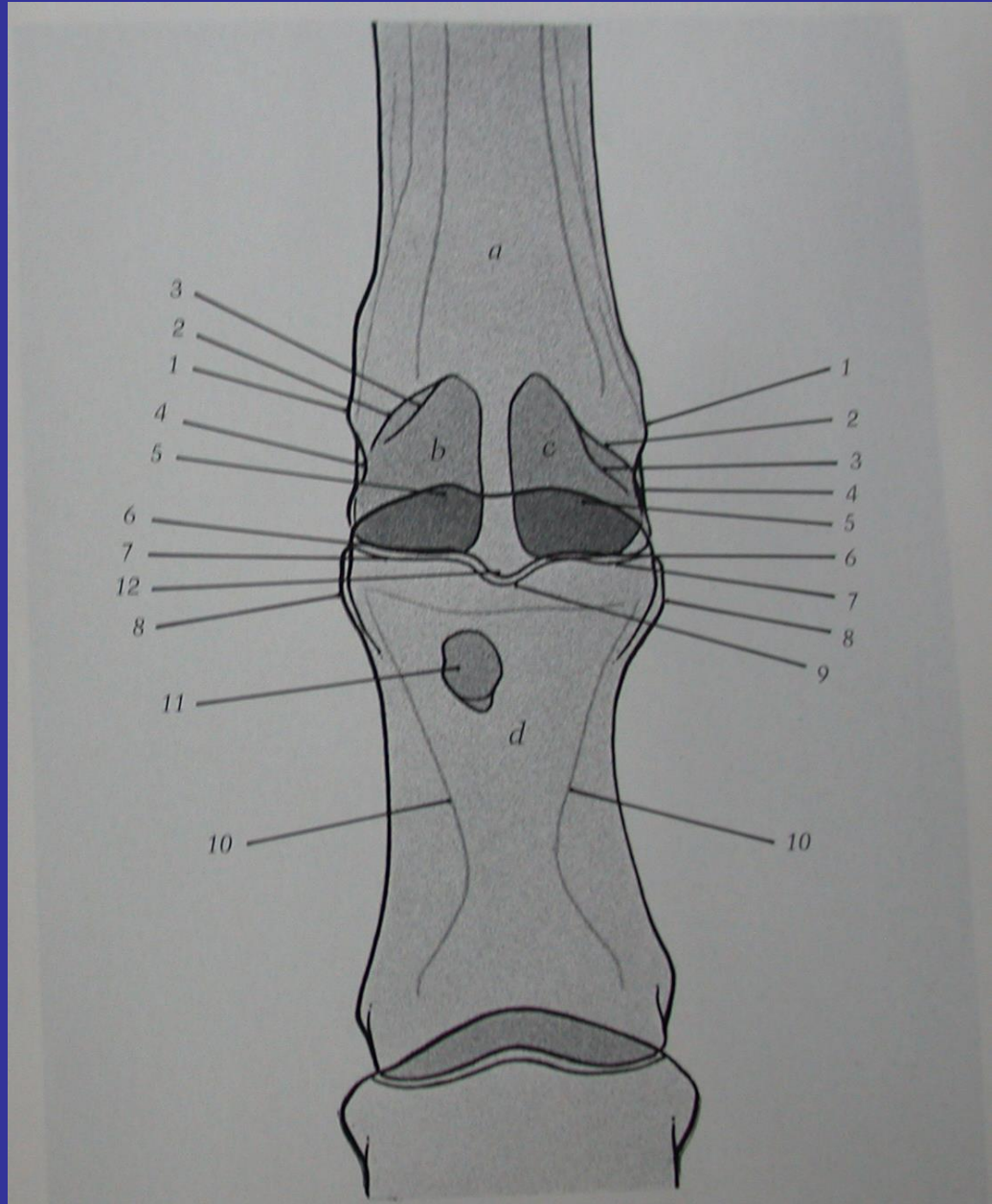
- M. biceps brachii tendonu ile humerus'un sulcus intertubercularis'inde bulunur

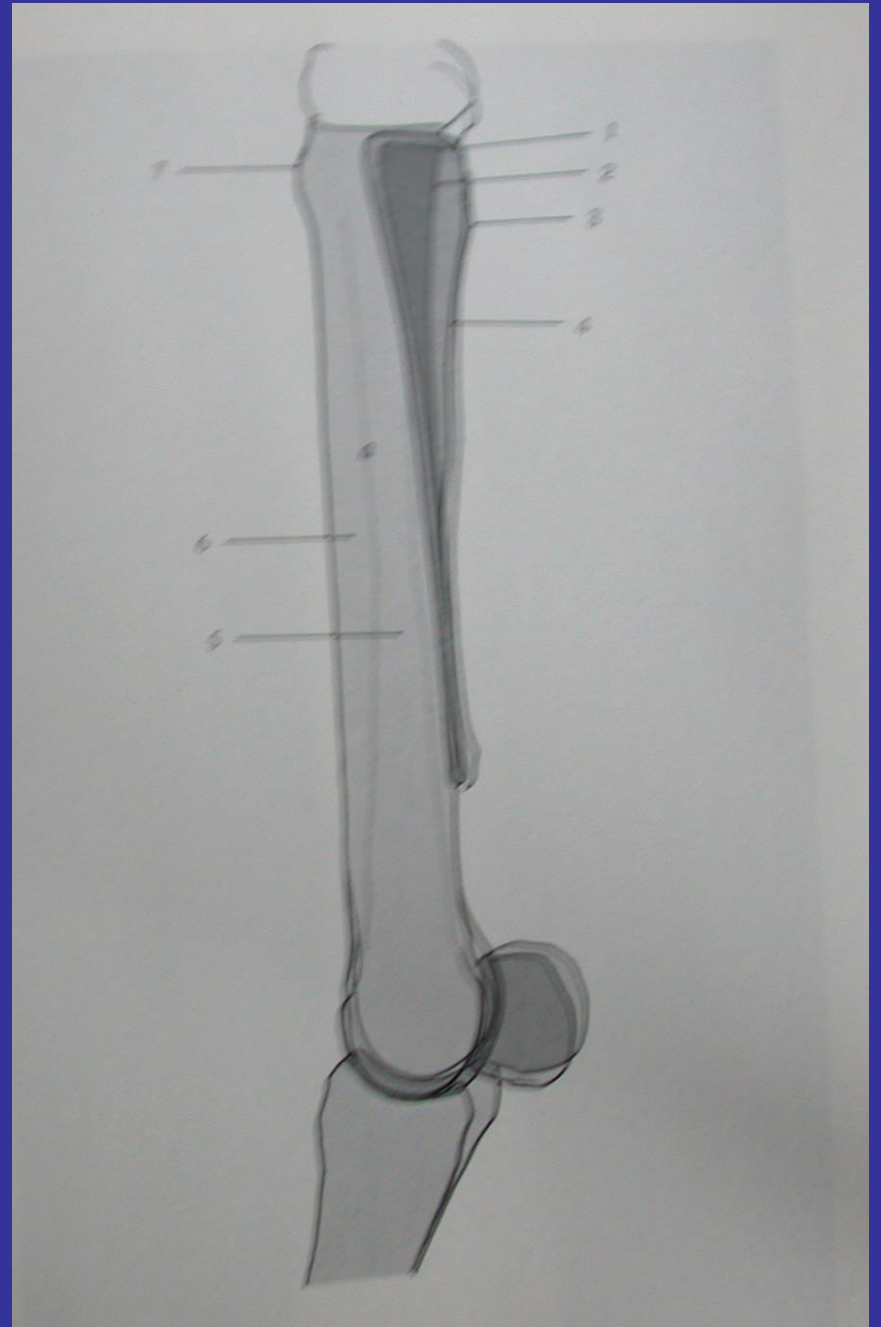


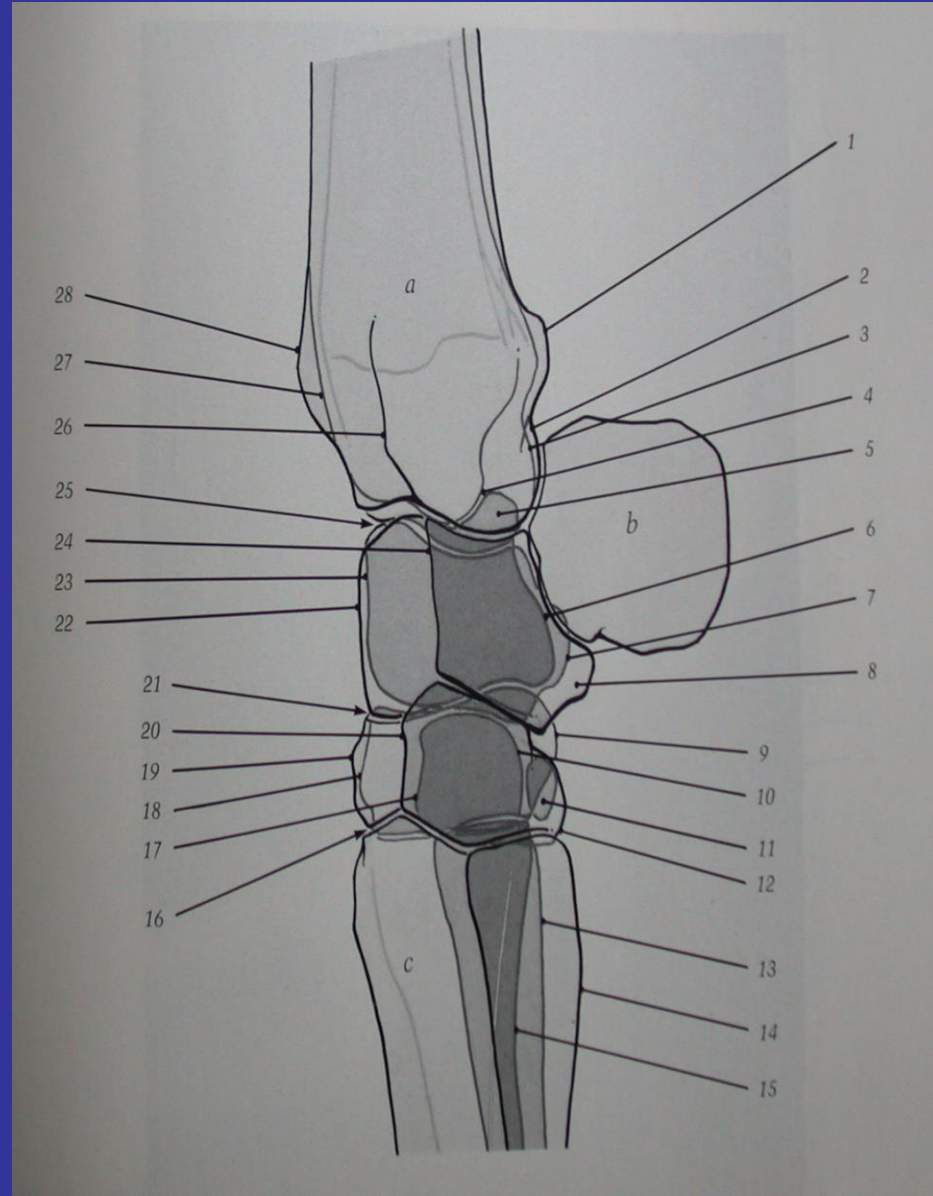


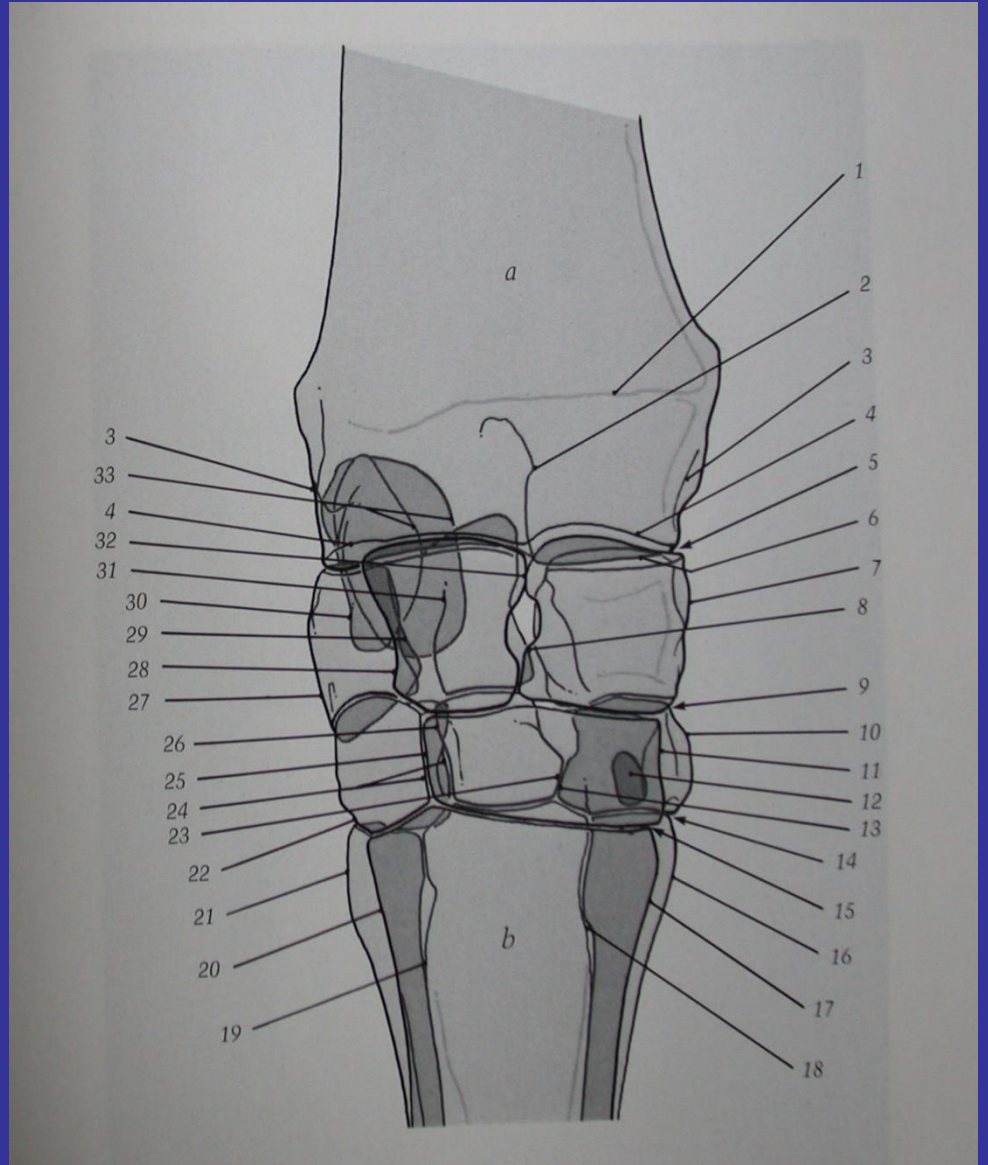


Lig. Crusiate testi



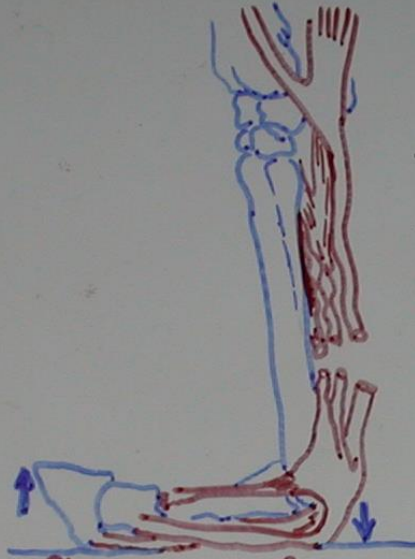












m. flex. dig. supf.,
m. flex. dig. prof. ve
m. int. med. tendolarının
rupturları



m. flex. dig. supf.
ve m. flex. dig. prof.
tendolarının rupturları

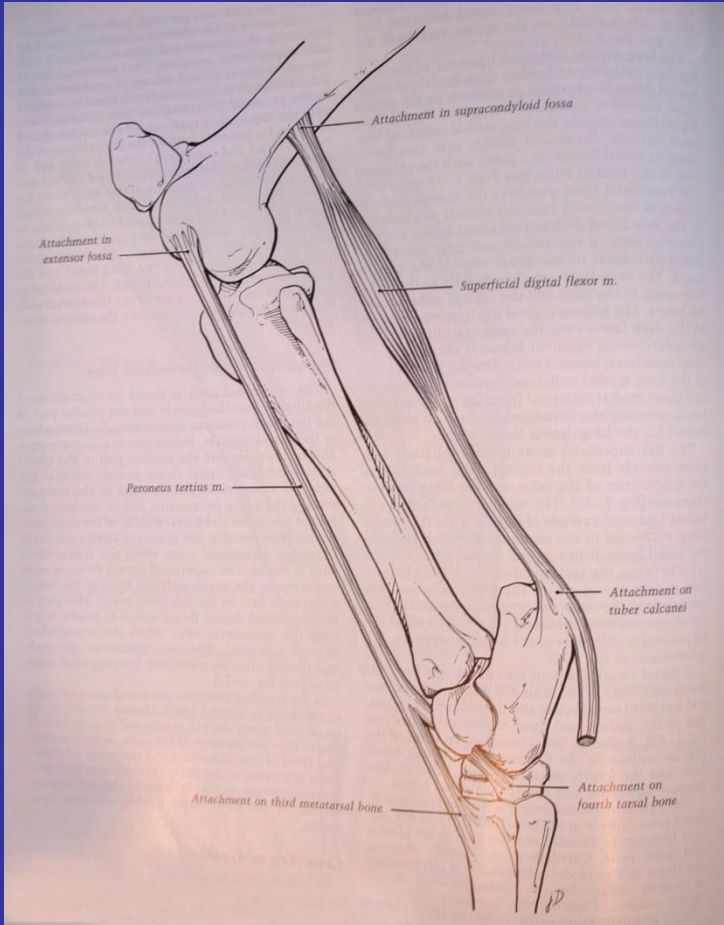


m. flex. dig. supf.
tendosunun rupturu



Solea unguis
eider gelir

DORSAL FLEKSİYON



M. gastrocnemius

Tarsal eklemin ekstansör kasıdır. Genü ekleminin flexor kasıdır.
 Femur distal 1/3'ünde
 ↓
 Tuber calcaneusa yapışır



M. fibularis tertius

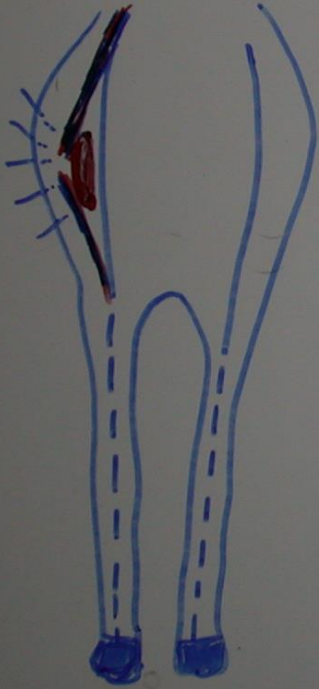
Femurun lateral fossa ekstensorium dan
 ↓
 3. metatarsal proxim.
 3. tarsal kenjige
 Fibula
 4. tarsal kenjige yapışır.
 Tarsal eklemin flexor kasıdır.

Tibio tarsal kese
 Proximal intertarsal ke
 Distal intertarsal ke
 Tarsometatarsal kese

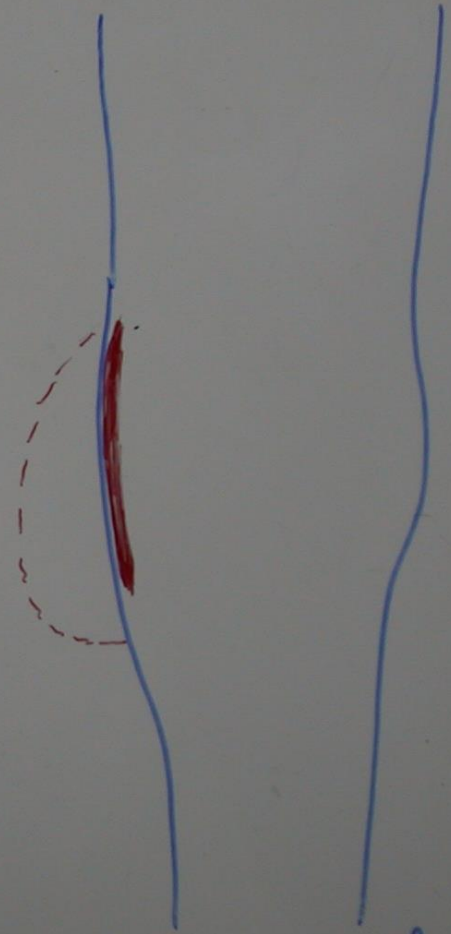
genü



② Bursitis infraspinati



Humerosun lateralinde yer alan bursa, m. infraspinatus'un kayma işlevini kolaylaştırır.



③ Pre karpal bursiti