



ORGANA SENSUUM

1- ORGANUM OLFACTUS

(Smelling)

2- ORGANUM GUSTUS

(Tasting)

3- ORGANUM VISUS

(Vision)

4- ORGANUM VESTIBULOCOCHLEARE

(Hearing and Balance)

5- ORGANUM TACTUS

(Touching)

ORGANUM VESTIBULOCOCHLEARE (İşitme-Denge Duyusu Organı)

AURIS

- AURIS EXTERNA (hearing)**
- AURIS MEDIA (hearing)**
- AURIS INTERNA (hearing + Balance)**

1-) AURIS EXTERNA

- **Auricula (ear)**
- **Meatus acusticus externus**

Auricula

- Collects sound waves
- Cartilago auriculae
- Apex auriculae
- Dorsum auriculae
- Scapha
- Helix
- Crus helicis
- Tragus-Inc.intertragica-Antitragus
- **Mm.auriculae**
- **Scutulum**

Meatus Acusticus Externus

- **Meatus Acusticus Externus Cartilagineus**
- Porus acusticus externus
- Cartilago meatus acustici
- Cartilago anularis
- **Meatus Acusticus Externus Osseus**
- Anulus tympanicus – Membrana tympani
- Gll.ceruminosae – Serumen
- Tragi

Membrana Tympani

- **Anulus tympanicus**
- **Incisura tympanica**
- **Pars flaccida**
- **Pars tensa**
- **Umbo membrana tympani**

2-) AURIS MEDIA

- Cavum tympani; Air filled

Paries / Ossicula auditis / Tubae auditivae

Walls of the middle ear

- **paries tegmentalis**
- Recessus epitympanicus
- Canalis facialis-n.facialis
- **paries jugularis**
- **paries labyrinthicus**
- Fenestra vestibuli – Basis stapes
- Fenestra cochlea – Memb.tymp. Sec.
- **paries membranaceus**
- Membrana tympani
- **paries mastoideus**
- Chorda tympani
- **paries caroticus**

Ossicula Auditis

- **Malleus**
- **Incus**
- Os lenticulare - Proc.lenticularis
- **Stapes**
- M.tensor tympani;
- M.stapedius;

Tubae Auditivae

- Cavum tympani - pars nasalis pharyngis
- **Pars ossea tubae auditivae**
- Ostium tympanicum tubae auditivae
- **Pars cartilagineae tubae auditivae**
- Ostium pharyngeum tubae auditivae
- **Diverticulum tubae auditivae*****
- Viborg's Triangle

1-) AURIS INTERNA

- **Labyrinthus osseus**
 - Vestibulum osseus
 - Canalis semicirculares ossei
 - Cochlea
- **Labyrinthus membranaceus**
 - Utriculus
 - Sacculus
 - Ductus semicirculares
 - Ductus cochlearis

ORGANUM TACTUS

- **Integumentum communa :**

Skin and the epidermoidal apparatuses (hair, hoof, horn, mamma and the skin glands)

CUTIS (DERI)

- ;
- * **Epidermis**
- * **Dermis (Corium)**
- * **Tela subcutanea (Subcutis)**

EPIDERMIS

- **stratum corneum**
- **stratum germinativum**

DERMIS (CORIUM)

TELA SUBCUTANEA (SUBCUTIS)

MAMMA (Meme)

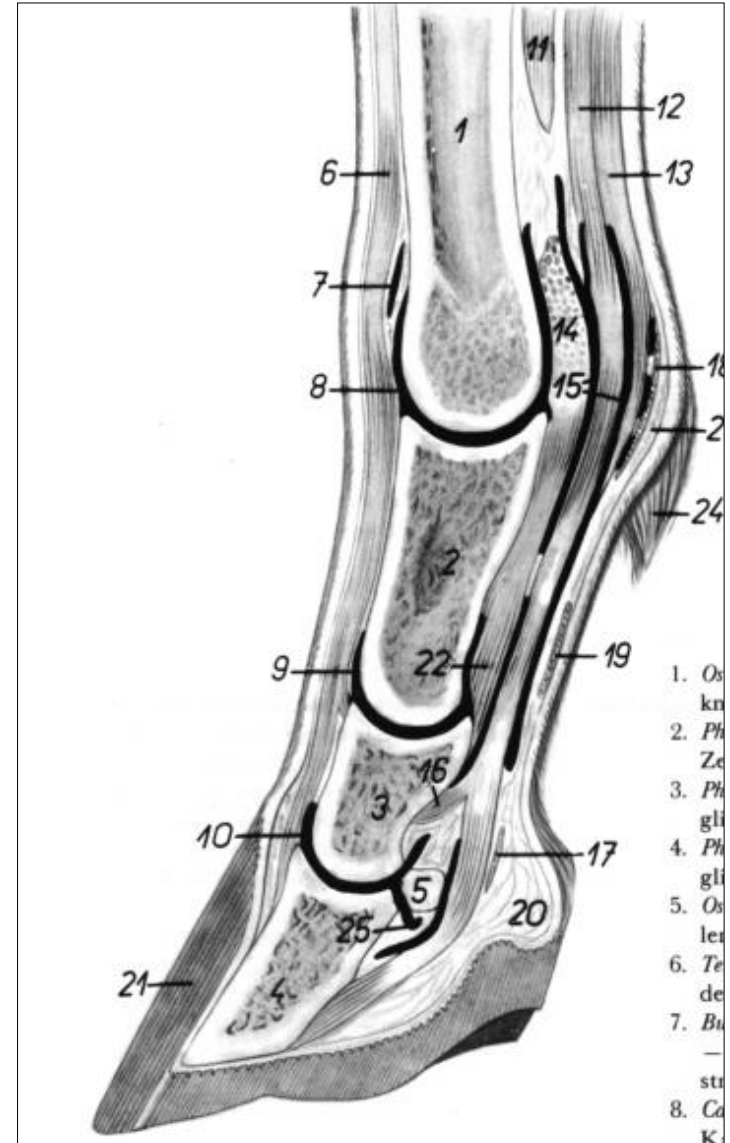
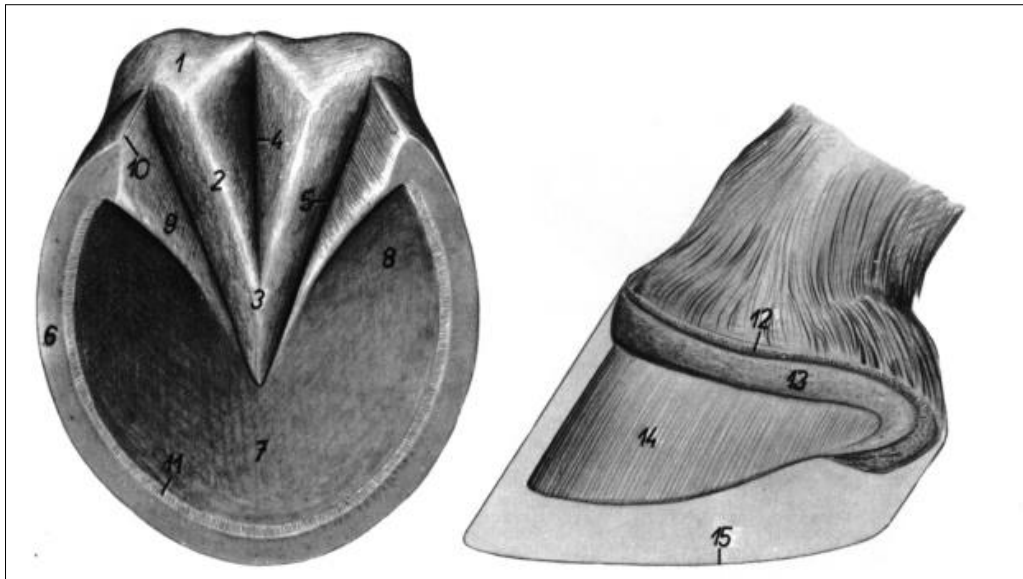
- **Mammalia**
- **Small ru., eq.** = 1 in each half
- **Large ru.** = 2 in each half
- **Felis** = 4 in each half
- **Canis** = 4-5 in each half
- **Sus** = 7 in each half

- **Monkey and elephant** = Thoracal
- **Cats** = Thoracoabdominal
- **Dog and Pig** = Thoracoinguinal
- **Rum., eq.** = Inguinal

- **Sulcus intermammarius**
- **1-) Corpus mammae**
- **2-) Papilla mammae**
- **3-) Boşluk ve kanal sistemi**

HOOF

- Human – unguis
- Canis – unguicula
- Eq. ve Rum. – ungula



CORIUM UNGULAE

- 1-) Corium limitans
- 2-) Corium coronarium
- 3-) Corium parietale
 - lamella coriales
- 4-) Corium solare
- 5-) Corium pulvinale
 - corium cuneale
 - * crura cunei cornei
 - * apex cunei cornei
 - * sulcus lateralis cunei cornei
 - * sulcus medialis cunei cornei
 - * sulcus intermedius cunei cornei
 - corium toricum



CAPSULA UNGULAE

1-) Paries unguiae

- Sulcus coronarius - Lamella corneae
- Glasur

2-) Solea unguiae

- Linea alba

3-) Pulvinus unguiae

- Cuneus corneus
 - *Crus cunei laterale et mediale
 - * Apex cunei
 - * Sulcus paracunealis lateralis et medialis
 - * Sulcus cunealis centralis
 - * Spina cunei cornei
- Torus corneus

