

Flagella and Cilia - cellular appendages
 can propel cells or propel materials over the cell surface
 cells that have flagella have few (usually 1 or 2)
 cells that have cilia have many - covering the surface
 flagella move with whip-like movements to propel the cell
 cilia have a more regular stroke and groups of cilia appear to
 move in unison, resulting in a wave-like motion
 flagella 5 to 20x longer than cilia



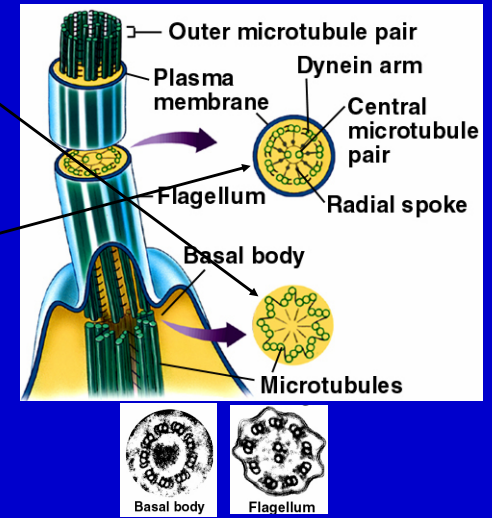
29

Structure

has basal body with 9 + 0
 structure of microtubules
 flagellum is membrane
 bound with pairs of
 microtubules in a 9+2
 pattern

each pair of tubules has
 short arms of another
 protein - dynein -
 that extend to
 neighboring tubules

movement of the flagellum is produced by sliding of the
 microtubule pairs

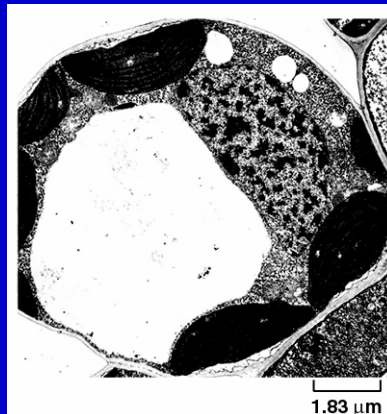


30

Plant Cells have, in addition to the collection of organelles found
 in other groups, a **central vacuole** for storage and for producing
 _____ pressure inside the the cell.

The central vacuole is usually
 filled with water and solutes.
 A high solute concentration
 draws water into the vacuole,
 expanding the vacuole and the
 cell.

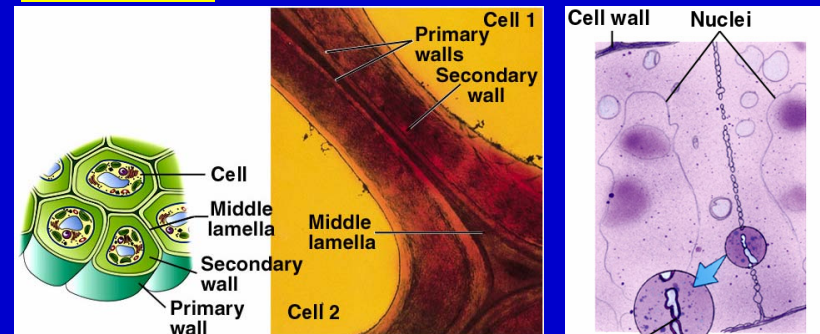
Because plant cells are
 enclosed by a cell wall, the
 expansion of the vacuole can
 exert pressure on the cell
 without causing the cell to
 burst.



31

Plants have cell walls made of cellulose.

During cell division plant cells build dividing walls between the
 two new cells called the **cell plate**. An adhesive layer - the
middle lamella - is laid down between the new cell walls



Cell walls can be thickened through the addition of materials to
 the inside of the primary cell wall.

32