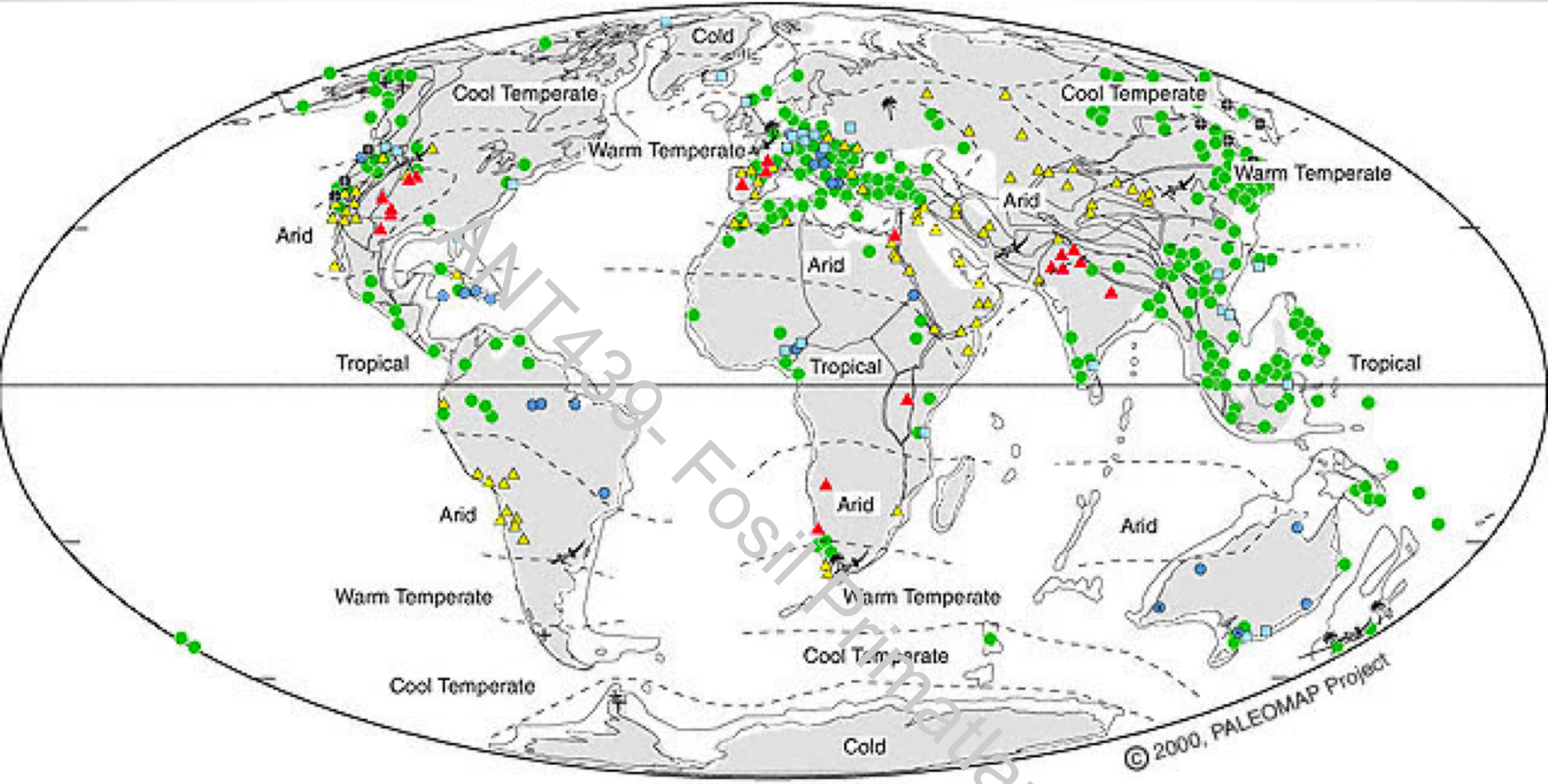


Outline

ANT439- Fossil Primatlar
Fossil Eski Dünya Maymunları





Miocene

Primat

Takım

Semiorder

Alt Takım

Infraorder

Üst aile

Haplorhini

Anthropoidea

Catarrhini

Proconculoidea

Propliopithecoidea
(Erken anthropoid)

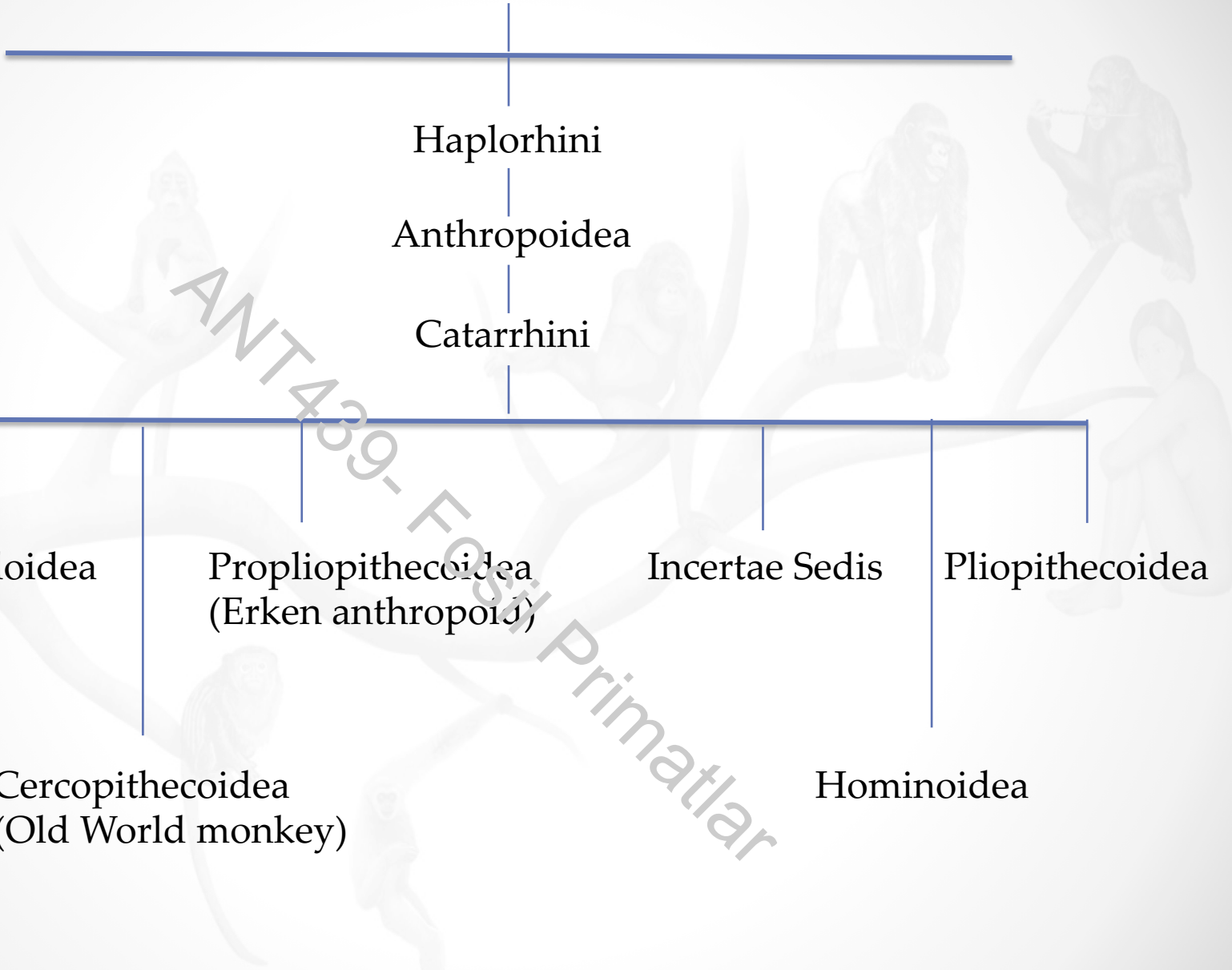
Incertae Sedis

Pliopithecoidea

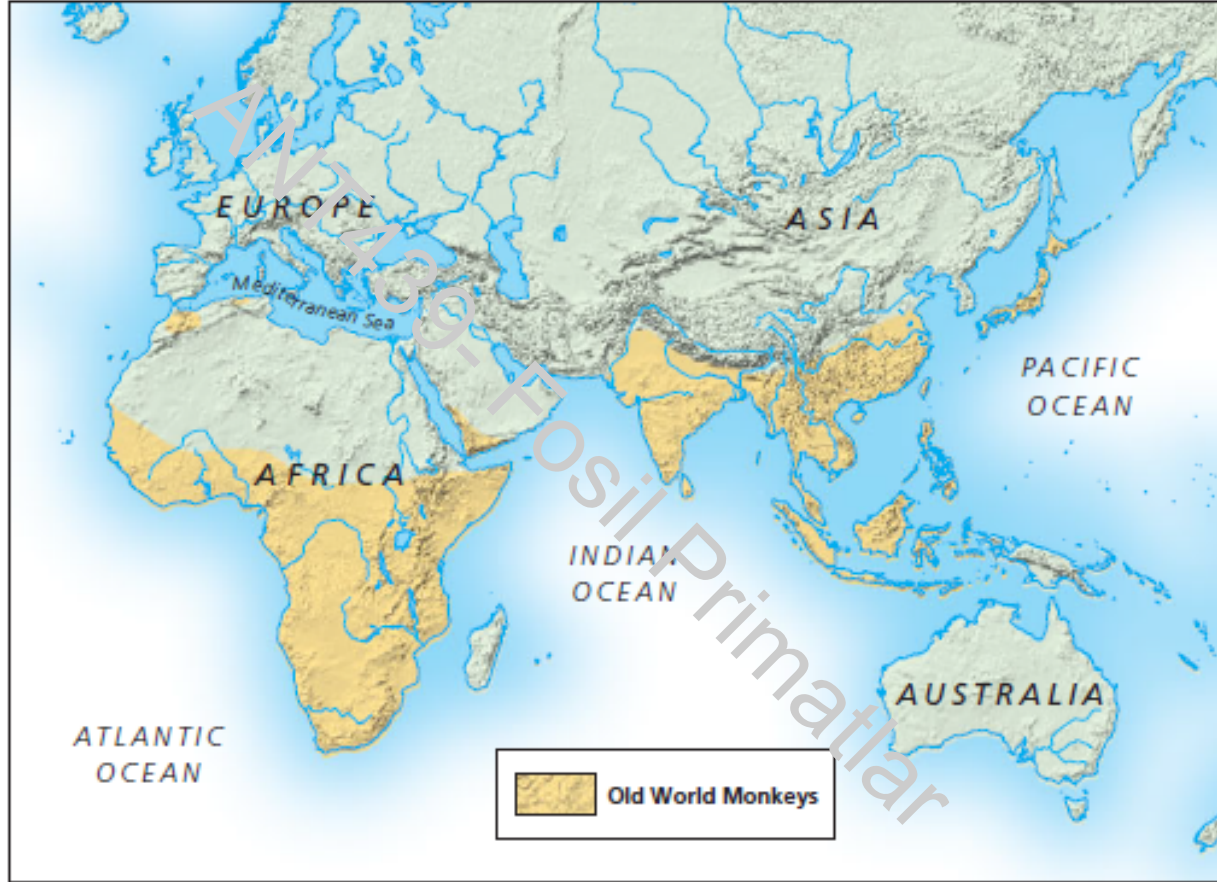
Cercopithecoidea
(Old World monkey)

Hominoidea

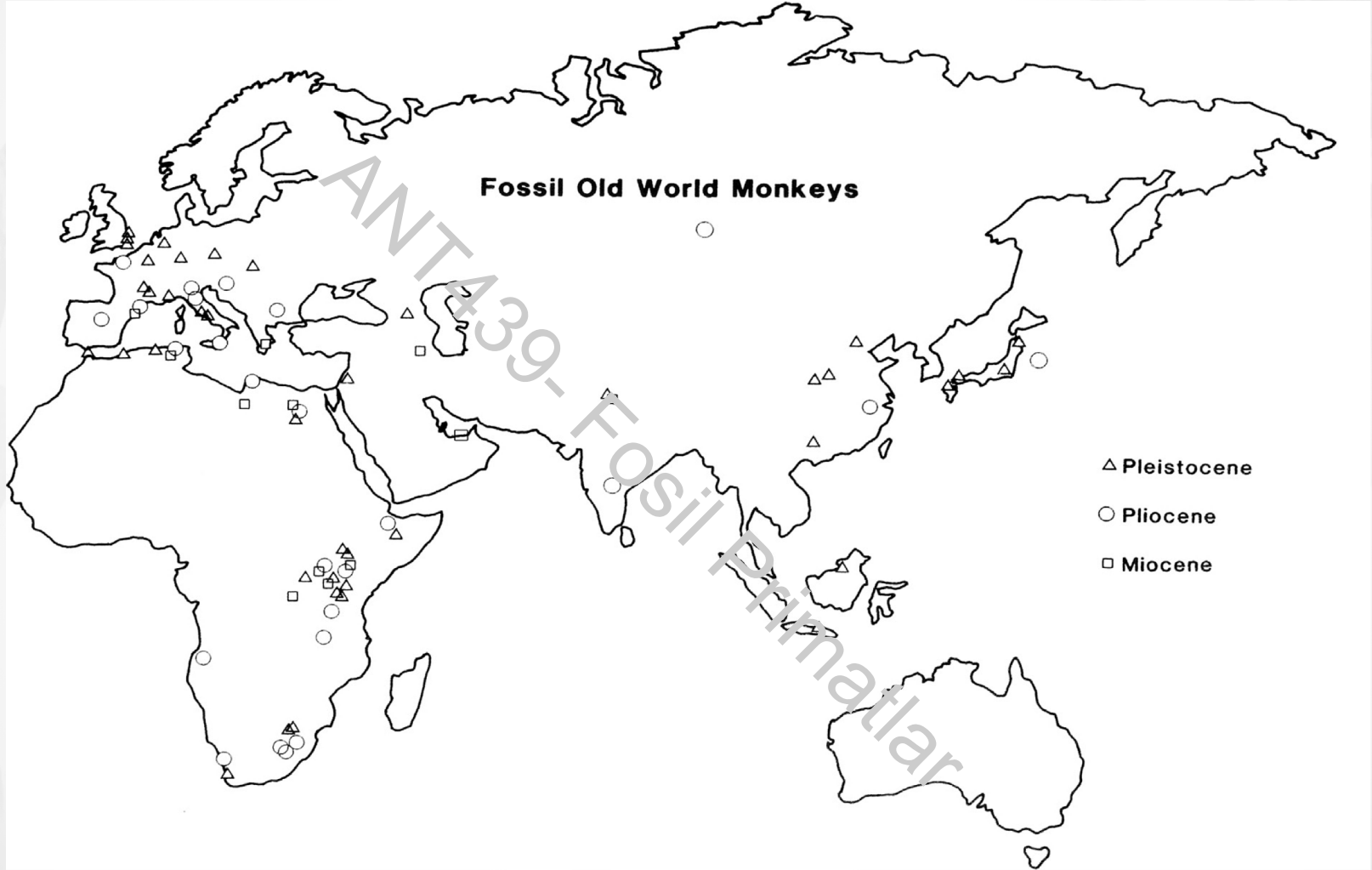
ANT439- Fossil Primatlar



Eski Dünya Maymunları



Fossil Eski Dünya Maymunları



The modern Old World, showing fossil monkey localities from the Miocene, Pliocene, and Pleistocene.

Primat

Takım

Semiorder

Alt Takım

Infraorder

Üst aile

Haplorhini

Anthropoidea

Catarrhini

Proconculoidea

Propliopithecoidea
(Erken anthropoid)

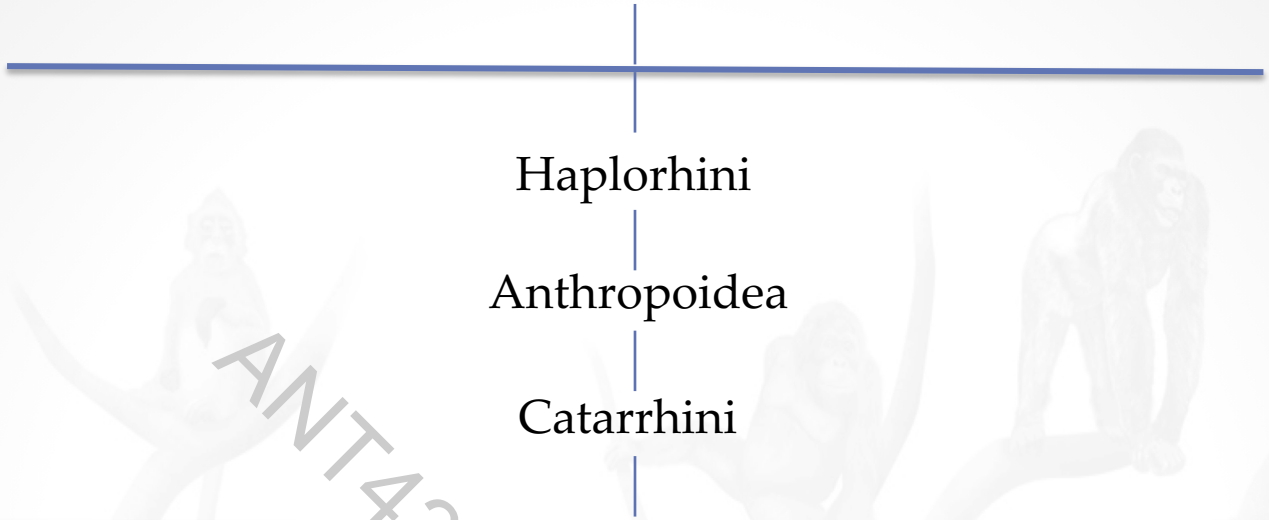
Incertae Sedis

Pliopithecoidea

Cercopithecoidea
(Old World monkey)

Hominoidea

ANT439- Fossil Primatlar





ischial callosities



bilophodont

bilophodont molars

Fossil Primatlar

Primat

Takım



Semiorder

Haplorhini

Alt Takım

Anthropoidea

Infraorder

Catarrhini

Üst aile

Cercopithecoidea

Aile

Cercopithecidae

Victoriapithecidae

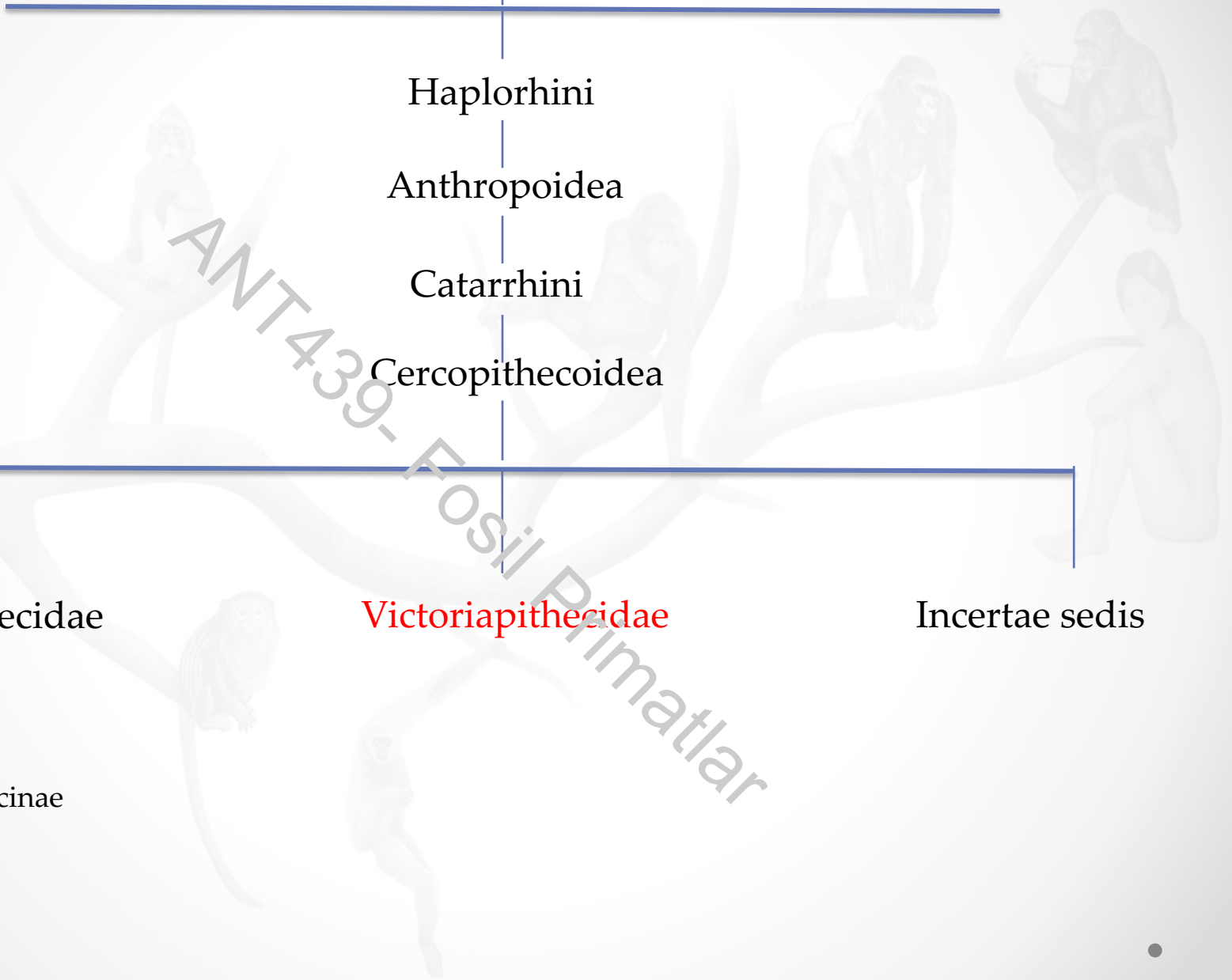
Incertae sedis

Alt aile

Cercopithecinae

Colobinae

ANT439- Fossil Primatlar



THE EARLIEST OLD WORLD MONKEYS

- Victoriapithecids are currently placed in four genera.
- Prohylobates
- Zaltanpithecus simonsi
- Victoriapithecus macinnesi
- Noropithecus

ANT439- Fossil Primatlar

Primat

Takım

Semiorder

Alt Takım

Infraorder

Üst aile

Haplorhini

Anthropoidea

Catarrhini

Proconculoidea

Propliopithecoidea
(Erken anthropoid)

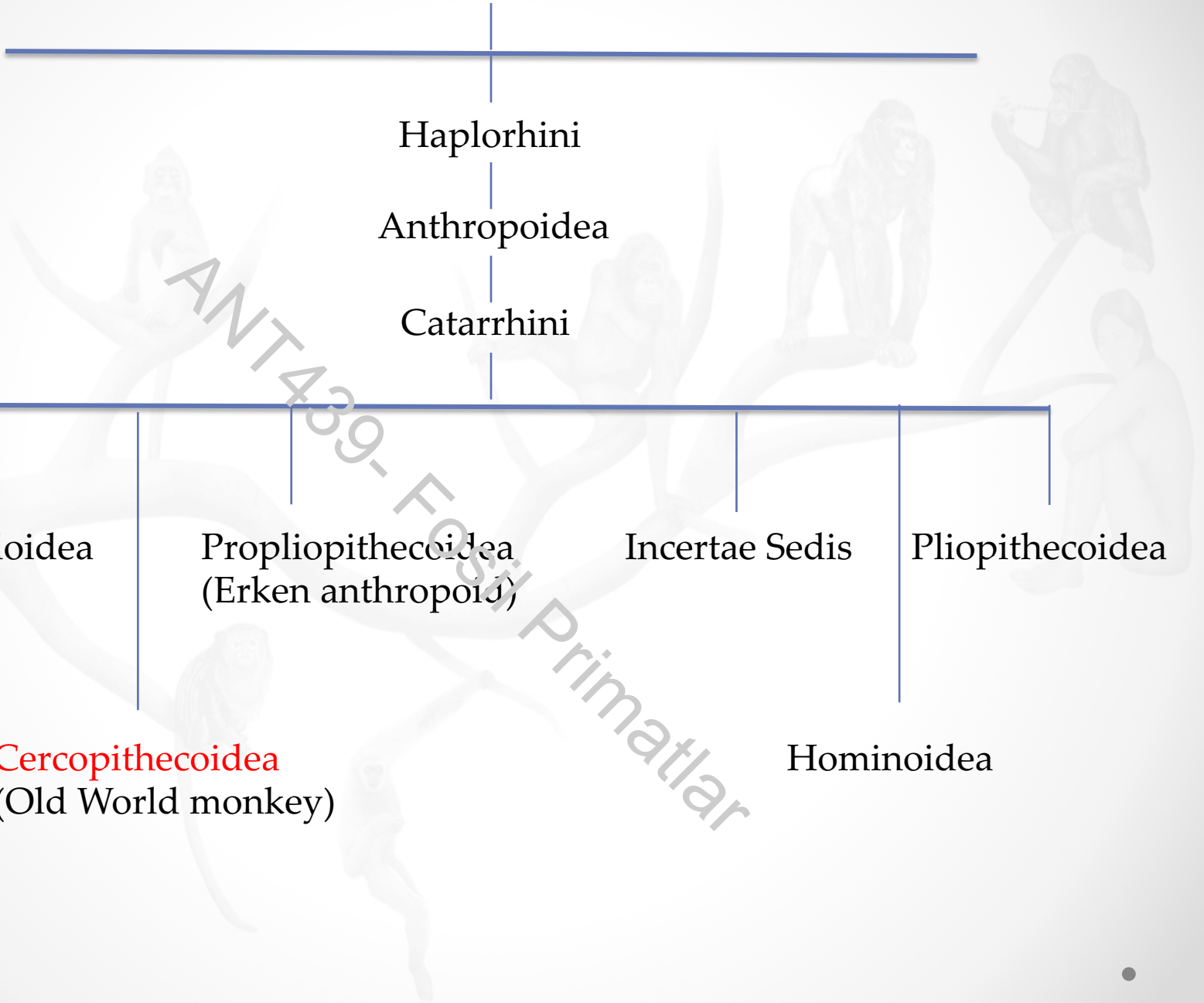
Incertae Sedis

Pliopithecoidea

Cercopithecoidea
(Old World monkey)

Hominoidea

ANT439- Fossil Primatlar



Primat

Takım



Semiorder

Haplorhini

Alt Takım

Anthropoidea

Infraorder

Catarrhini

Üst aile

Cercopithecoidea

Aile

Cercopithecidae

Victoriapithecidae

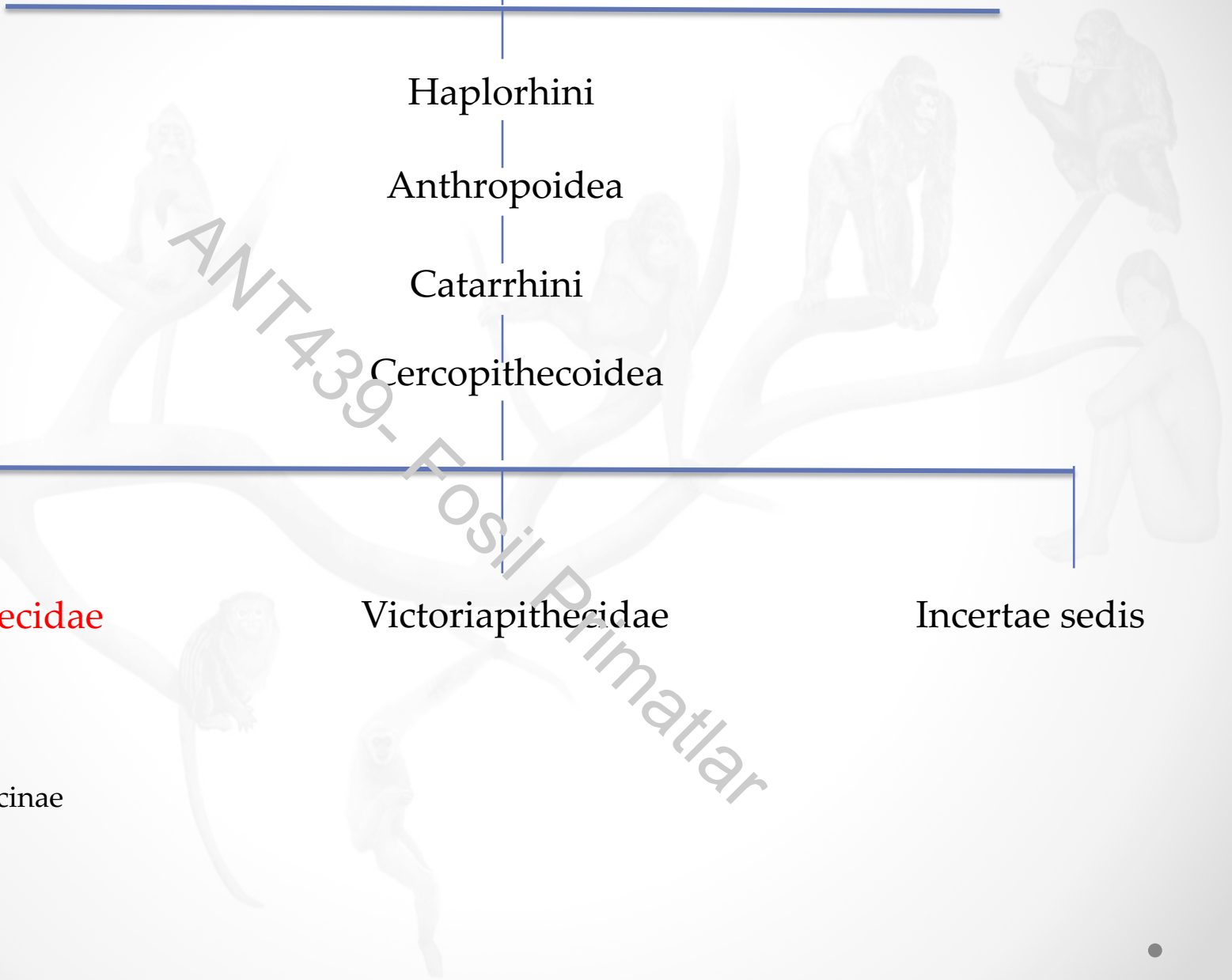
Incertae sedis

Alt aile

Cercopithecinae

Colobinae

ANT439- Fossil Primatlar



Cercopithecoidea

(Alt Aile)

Cercopithecinae
(cheek-pouch monkeys)
(kese yanaklı)

Colobinae
(leaf-eating monkeys)



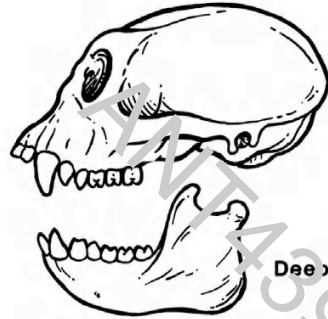
ANT439- Fossil Primatlar

Colobines

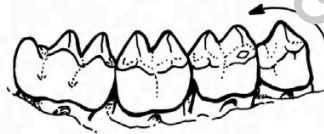


Broad Interorbital Region

Narrow Incisors



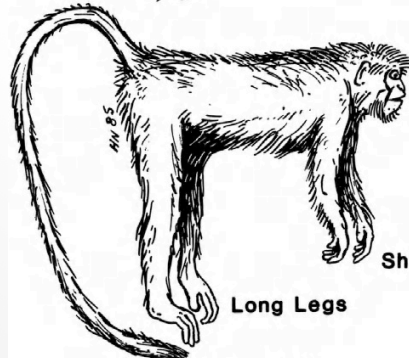
Deep Jaw



High Cusps



Complex Stomach



Long Legs

Long Tail

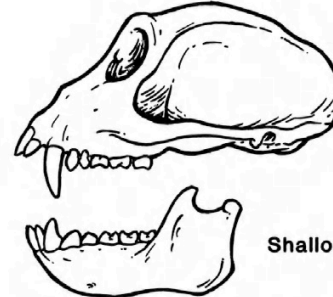
Short Thumbs

Cercopithecines



Narrow Interorbital Region

Broad Incisors



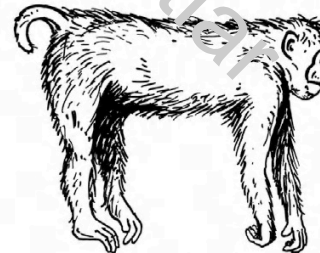
Shallow Jaw



Low Cusps



Cheek Pouches



Similar Arms and Legs

Colobinae	Cercopithecinae
Yaprak	Hepçil (Genellikle meyve)
Keseli yanak yok	Keseli yanak var
Ischial callosities yok	Ischial callosities var
Karmaşık, bölünmüş mide (yüksek lifli diyetleri sindirmek için, örn. inek)	Basit mideler (diğer primatlar gibi karışık gıdaları sindirmek için)
Azı dişleri üzerinde yüksek cusplar (yaprakları parçalamak için)	Azı dişlerinde daha alçak cusplar (çoğu omnivor gibi)
Daha dar kesici dişler	Daha geniş kesici dişler

FOSSIL CERCOPITHECINES

(Subfamily Cercopithecinae)

- Fossil cercopithecines, like those living today can be readily divided into three major groups:
- macaques;
- mangabeys, mandrills, baboons and geladas;
- guenons

ANIM 39- Fossil Primatlar

Primat

Takım

Semiorder

Alt Takım

Infraorder

Üst aile

Aile

Alt aile

Haplorhini

Anthropoidea

Catarrhini

Cercopithecoidea

Cercopithecidae

Cercopithecinae

Macaca (Latest Miocene to Recent, North Africa, Europe, Asia)

Procyngocephalus (Pliocene, Asia)

Paradolichopithecus (Pliocene, Europe)

Papio (Plio-Pleistocene to Recent, Africa)

Dinopithecus (Pleistocene, Africa)

Procercocobus (Plio-Pleistocene, South Africa)

Pliopapio (Miocene-Pliocene, East Africa)

Parapapio (Late Miocene to Early Pleistocene, Africa)

Gorgopithecus (Pleistocene, southern Africa)

Theropithecus (Plio-Pleistocene, Africa, Asia)

Cercopithecus (Pliocene to Recent, Africa)

ANITA439 Fossil Primatlar

Primat

Takım

Semiorder

Alt Takım

Infraorder

Üst aile

Aile

Alt aile

Haplorhini

Anthropoidea

Catarrhini

Cercopithecoidea

Cercopithecidae

Colobinae

Cercopithecoides (Miocene to Pliocene, Africa)

Kuseracolobus (Miocene to Pliocene, Africa)

Microcolobus (Late Miocene, Africa)

Libypithecus (Late Miocene to Pliocene, North Africa)

Colobus (Late Miocene to Recent, Africa)

Paracolobus (Plio-Pleistocene, Africa)

Rhinocolobus (Plio-Pleistocene, Africa)

Mesopithecus (Late Miocene to Pliocene, Europe, West Asia)

Dolichopithecus (Pliocene, Europe)

cf. *Semnopithecus* (Late Miocene to Recent, Asia)

Presbytis (Pleistocene to Recent, Asia)

Trachypithecus (Pleistocene to Recent, Asia)

Phinopithecus (Early Pleistocene to Recent, Asia)

ANT439- Fossil Primatlar

FOSSIL COLOBINES

African Colobines
Eurasian Colobines
Asian Colobines

ANT439 - Fossil Primatlar

