

2019-2020

# B.255. Plant Histology Lab.

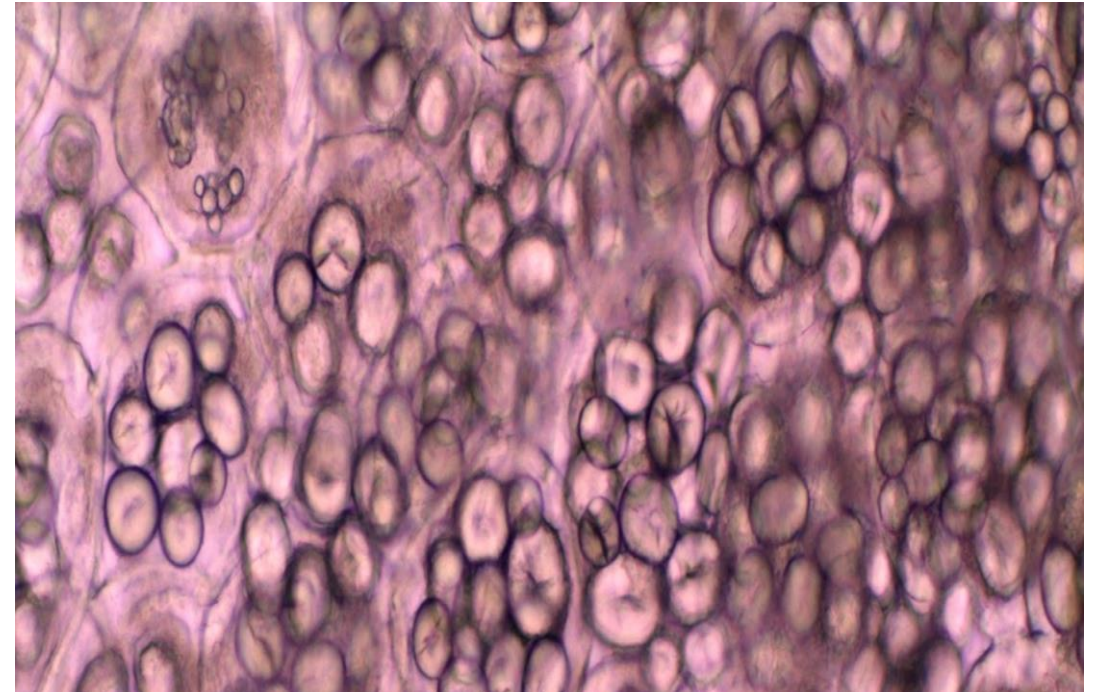
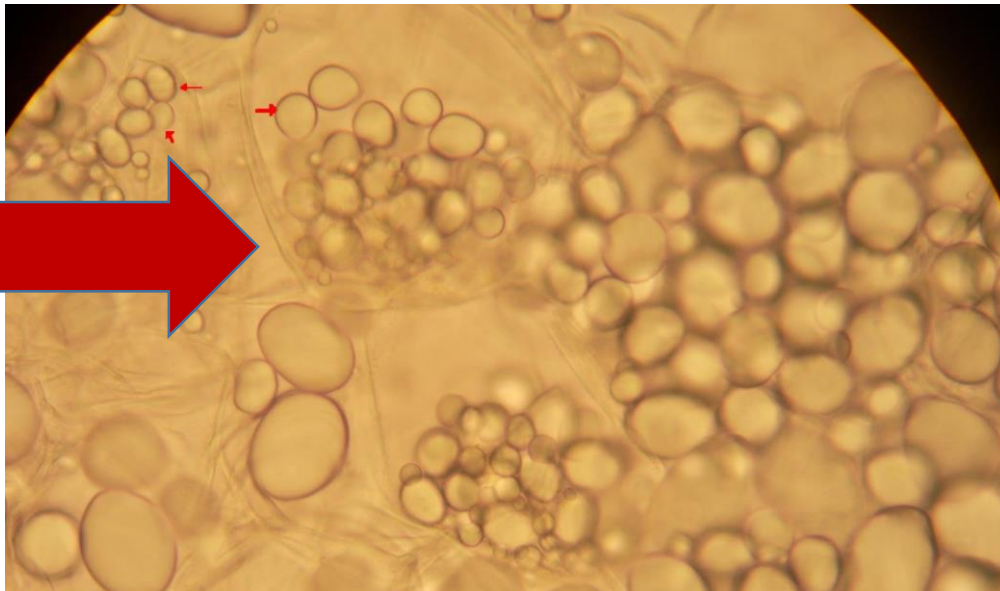
Arař. Gör. Dr. Aydan ACAR ŐAHİN

5th. week

7.

# Storage parenchyma

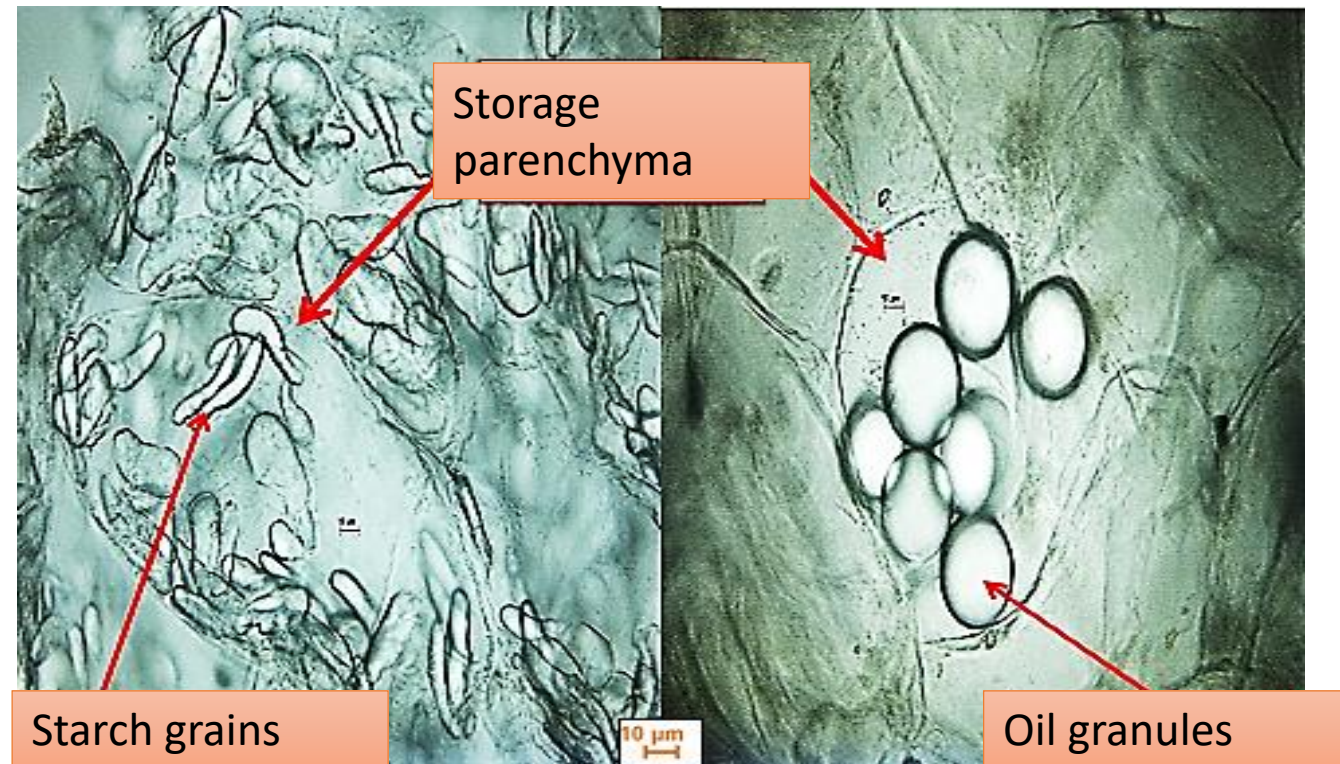
- Subject: Permanent tissues
- Sub topic: Ground tissues, Storage parenchyma
- Species (sp): *Solanum tuberosum*
- Dir.of section: Superficial section from the fruit mesokarp



8.

# Storage parenchyma

- Subject: Permanent tissues
- Sub topic: Ground tissues, Storage parenchyma
- Species (sp): *Musa acuminata*
- Dir.of section: Superficial section from the fruit mesokarp

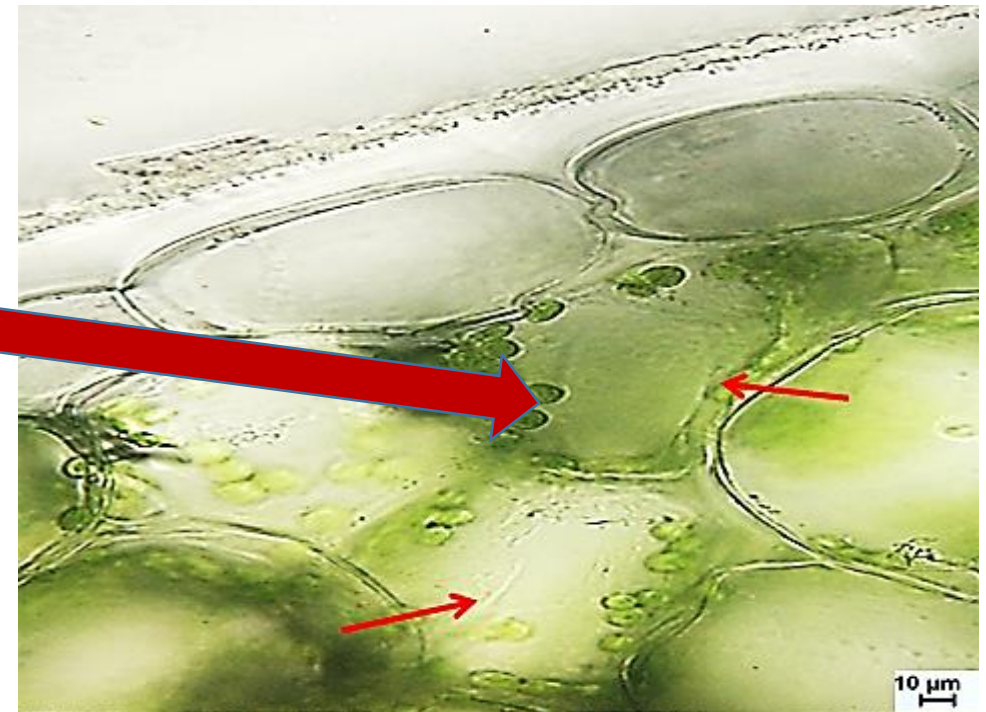
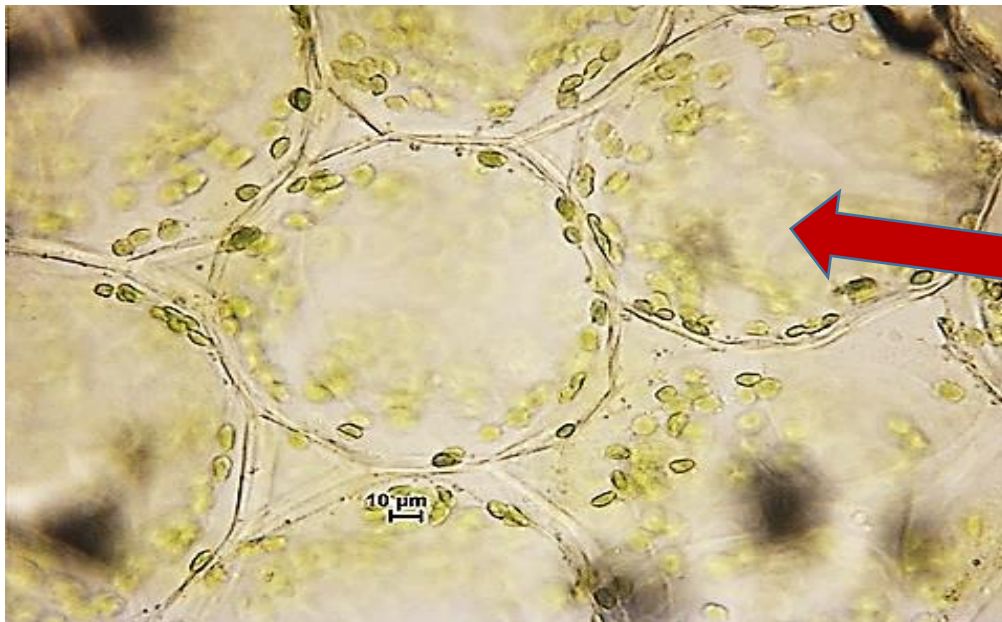




9.

# Water storage parenchyma

- Subject: Permanent tissues
- Sub topic: Ground tissues, Water storage parenchyma
- Species (sp): *Sedum* / *Aloe vera*
- Dir.of section: Transversial section from the leaf

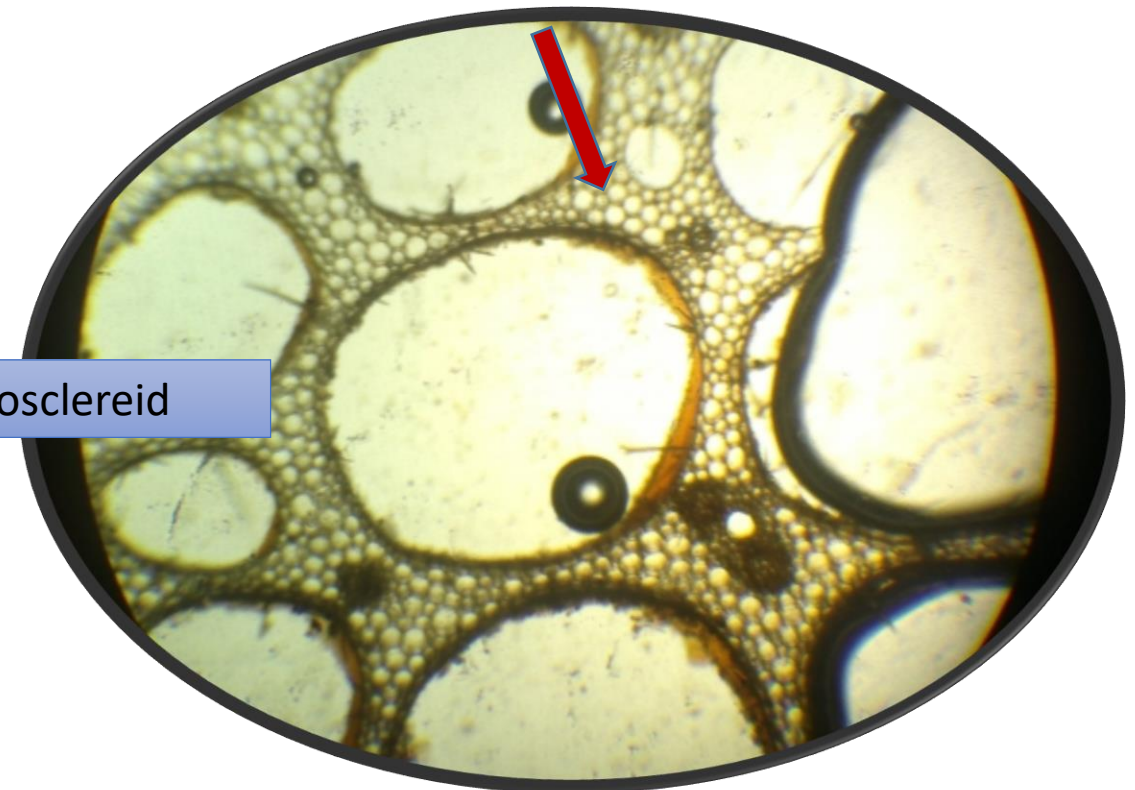
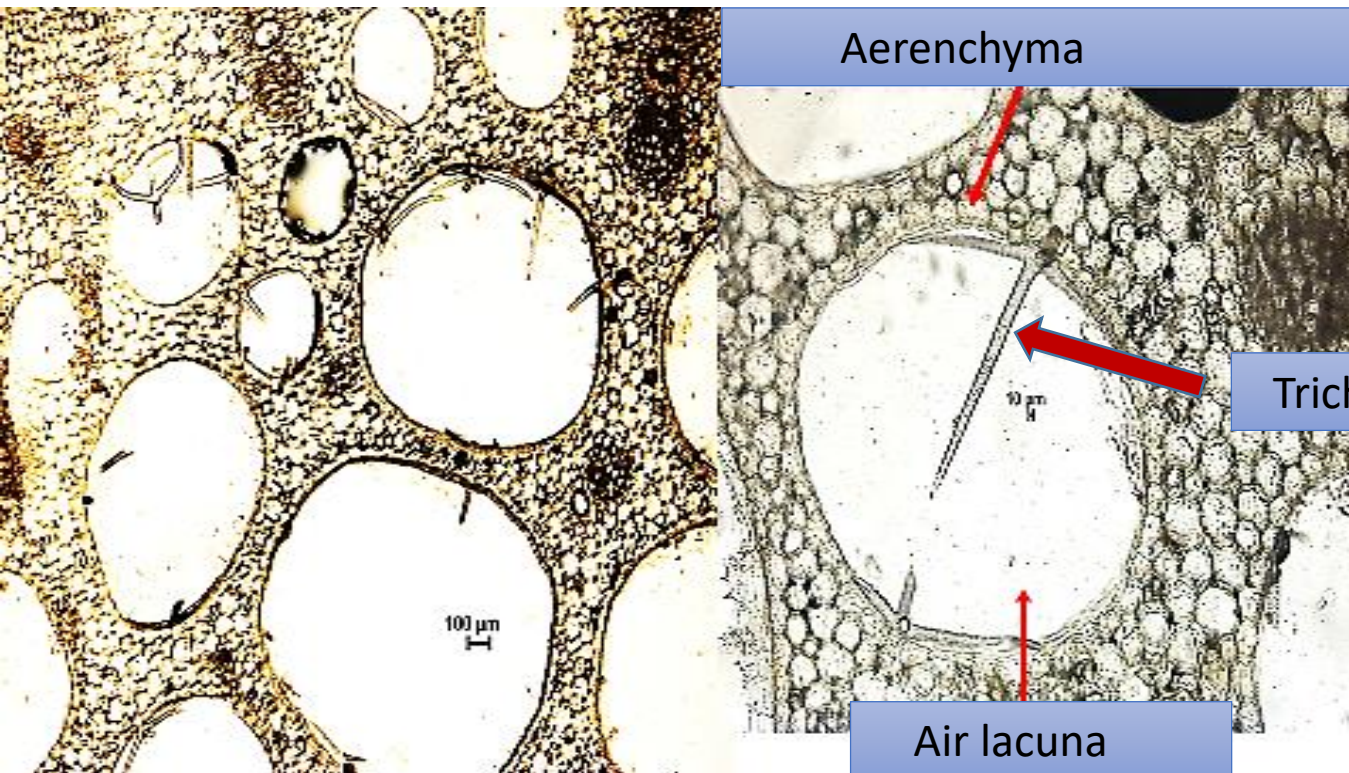




10.

# Aerenchyma

- Subject: Permanent tissues
- Sub topic: Ground tissues, Aerenchyma
- Species (sp): *Nymphaea sp.*
- Dir.of section: Transversial section from the petiole.

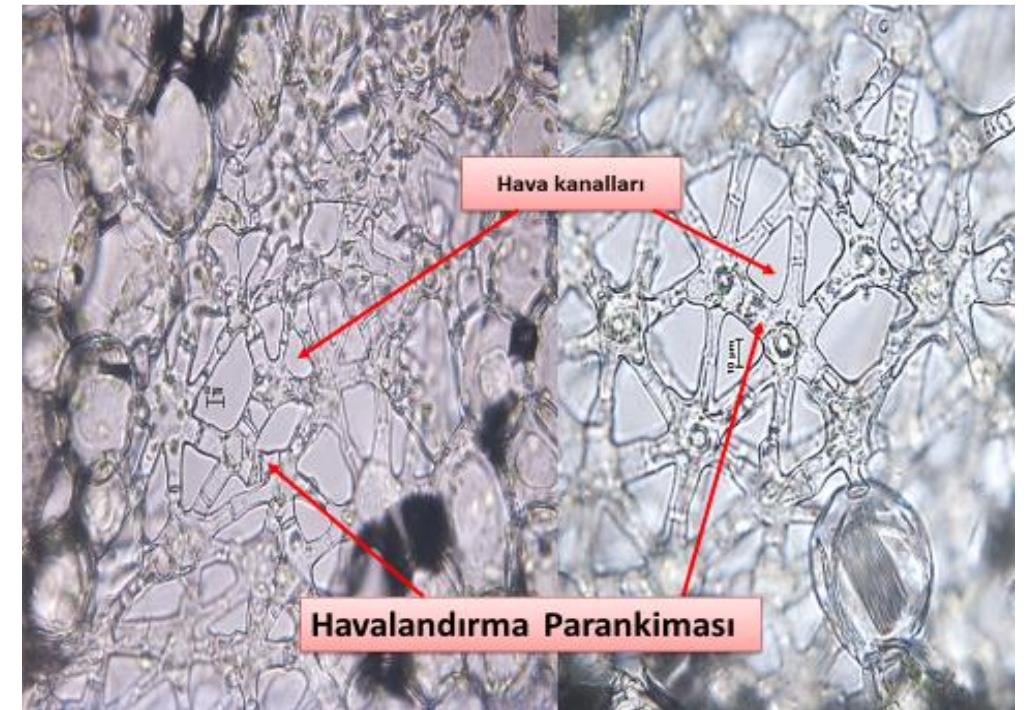
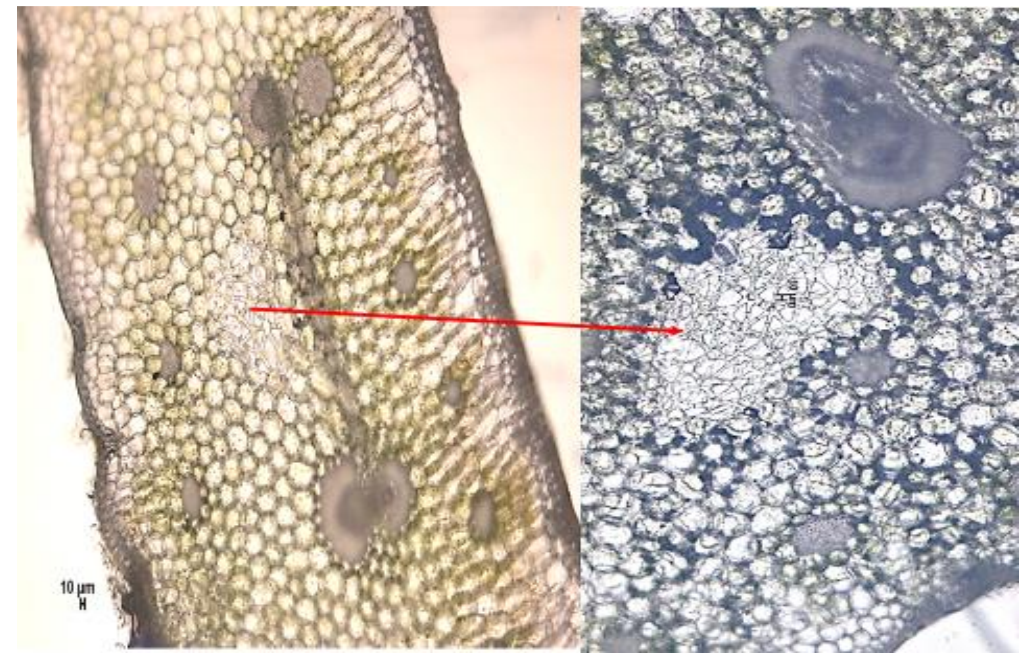




11.

## Star-shaped/ Satellite parenchyma

- Subject: Permanent tissues
- Sub topic: Ground tissues, Aerenchyma, Satellite parenchyma
- Species (sp): *Ananas comosum*
- Dir.of section: Transversial section from the fruit bract leaves.





12.

# Transport parenchyma

- Subject: Permanent tissues
- Sub topic: Ground tissues, Transport parenchyma
- Species (sp): *Cucurbita pepo*
- Dir.of section: Transversial section from the stem

