

2019-2020

B.255. Plant Histology Lab.

Arař. Gör. Dr. Aydan ACAR ŐAHİN

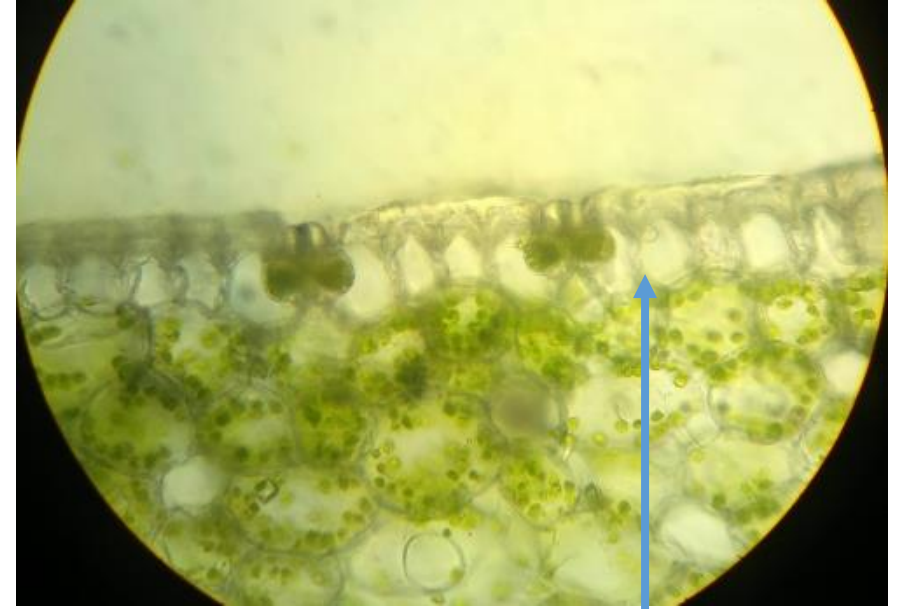
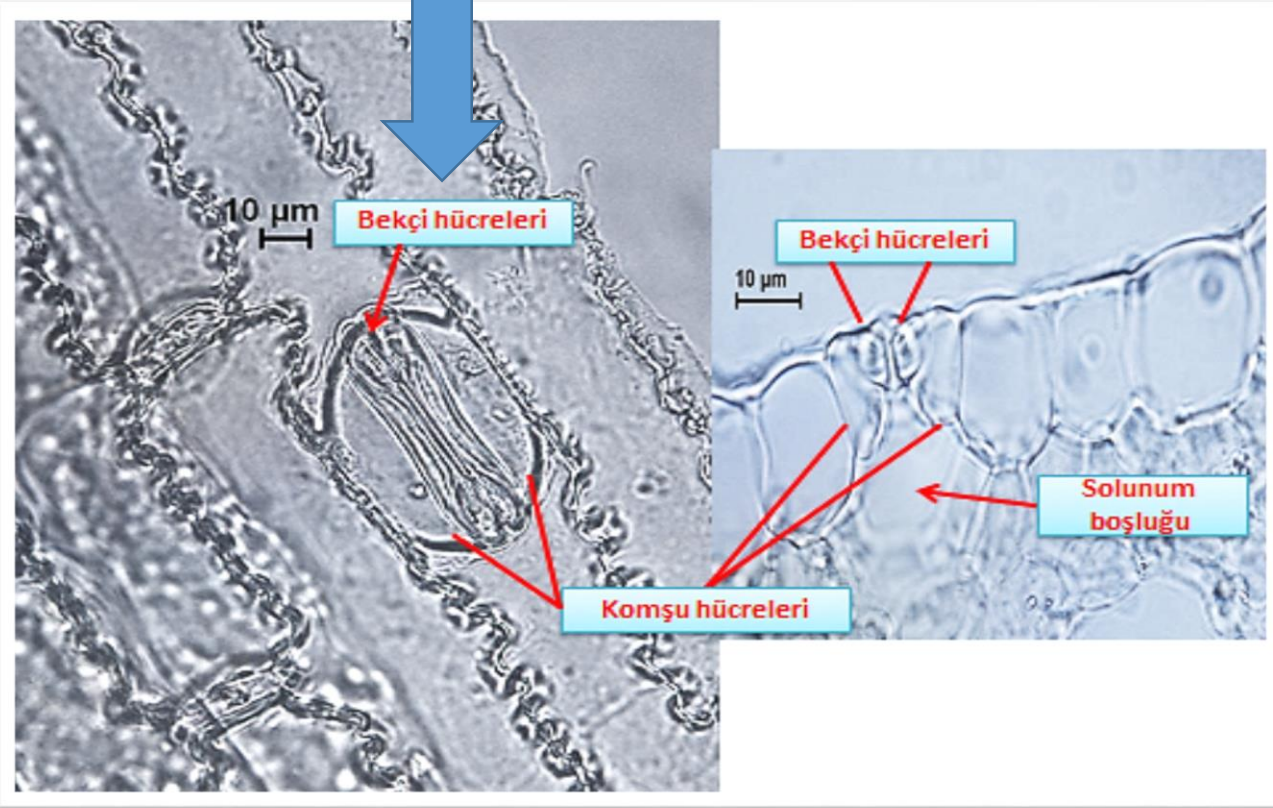
7th. week

Amaryllis type stoma



- **Subject: Permanent Tissues**
- **Sub topic: Dermal tissue/Amaryllis type stomata**
- **Sp: Rhoeo discolor**
- **Sec.dir: Superficial section from the lower surface of the leaf and transverisal section**

Graminae type stoma



- **Subject: Permanent tissues**
- **Sub topic: Gramineae type stomata**
- **Sp.: *Cyperus sp.***
- **Sec.dir: Superficial section from the lower surface of the leaf and transversal section**