

2019-2020

B.255. BİTKİ HİSTOLOJİSİ LAB.

Araş. Gör. Dr. Aydan ACAR ŞAHİN

2.hafta

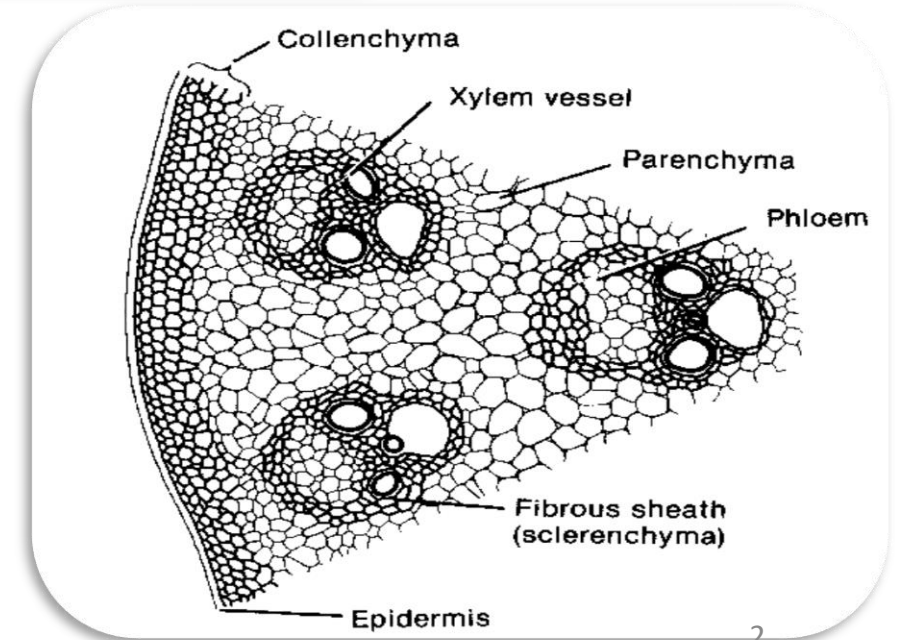
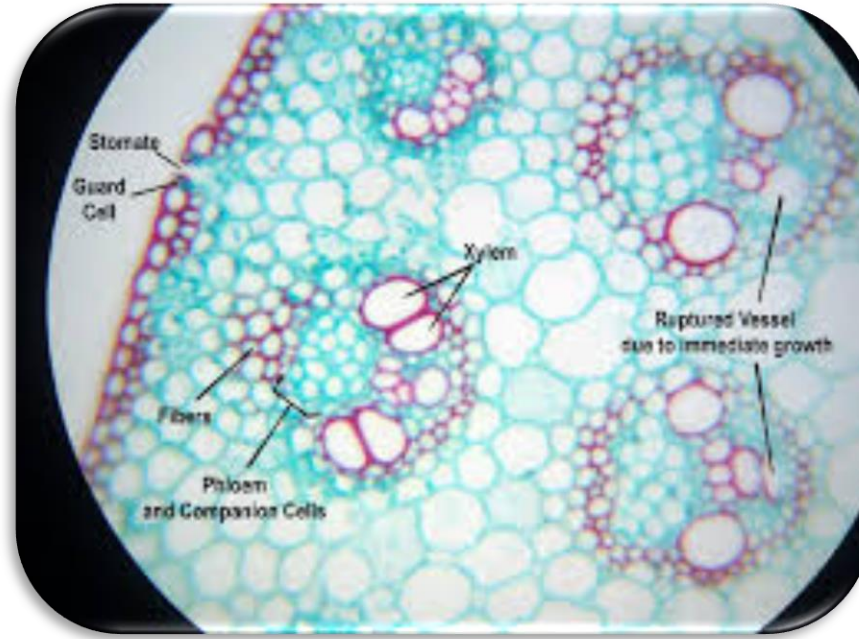
DENEY 1

Konu: Bitkisel dokular

Alt konu: Gerçek doku (Trake, trakeid)

Species (sp): *Zea mays* (mısır)

Kesit yönü: Gövde enine/hazır preparat



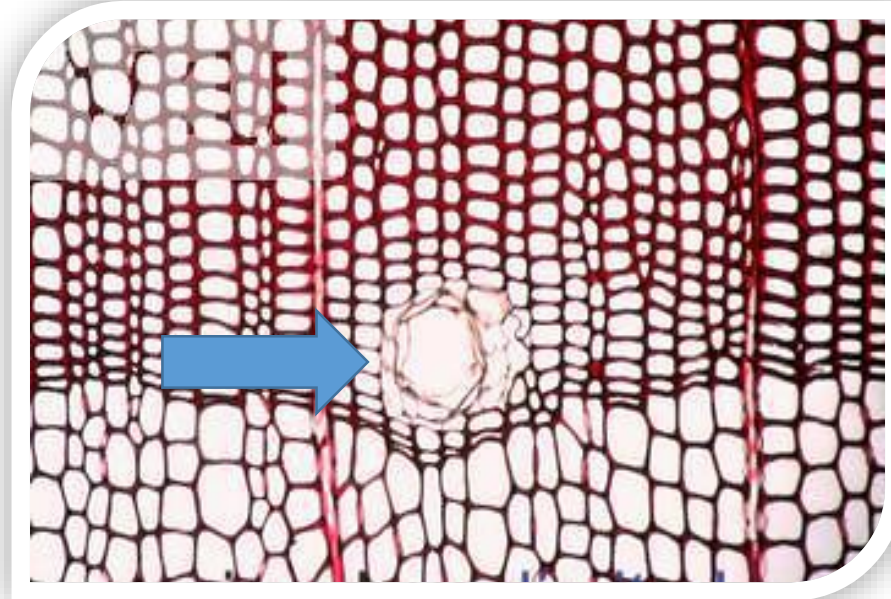
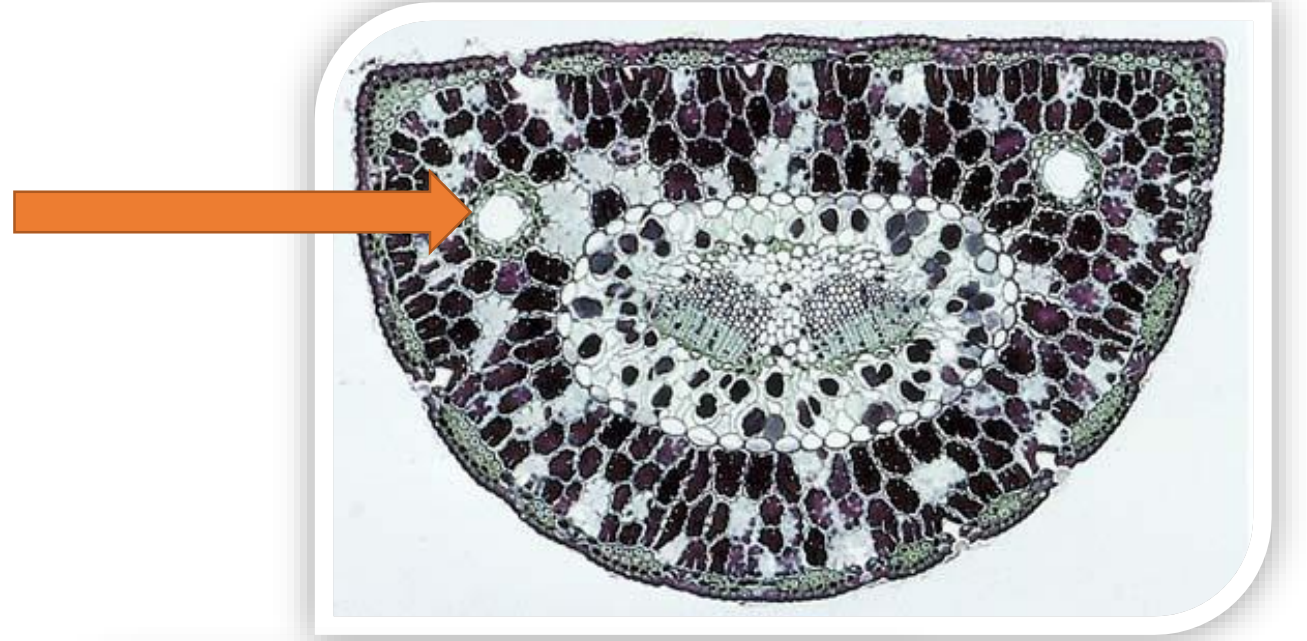
DENEY 2

Konu: H.A.B Sistemi

Alt konu: Şizogen boşluk

Species (sp): *Pinus nigra*

Kesit yönü: Yaprak enine



DENEY 3

Konu: H.A.B Sistemi

Alt konu: Şizo-lizigen boşluk

Species (sp): *Zea mays* (mısır)

Kesit yönü: Gövde enine

