

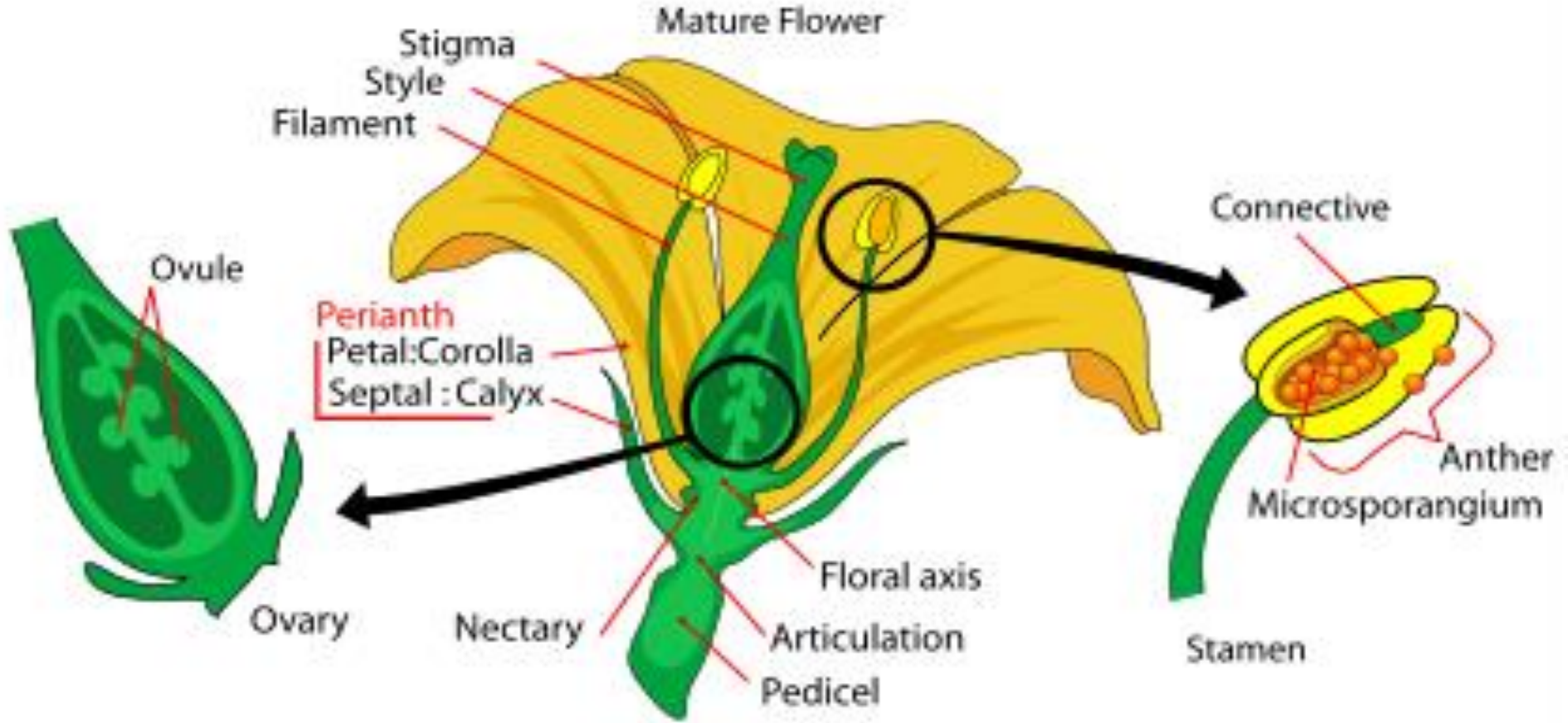
2019-2020

B.256. BİTKİ MORFOLOJİSİ LAB.

Araş. Gör. Dr. Aydan ACAR ŞAHİN

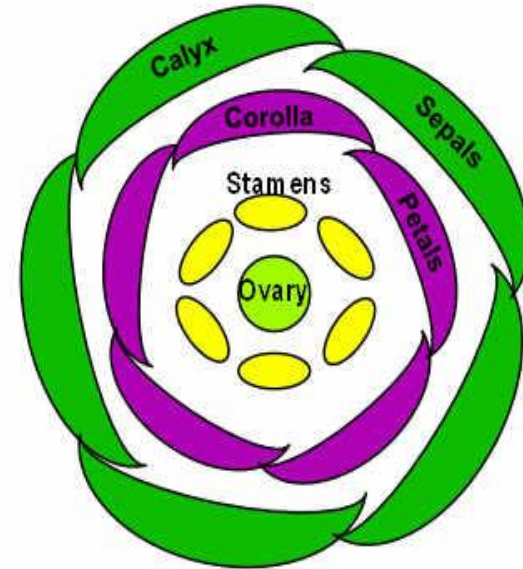
12.hafta

Çiçek, metamorfoza uğramış, kısalmış yada tamamen ortadan kalkmış ve uzaması durmuş bir daldır.

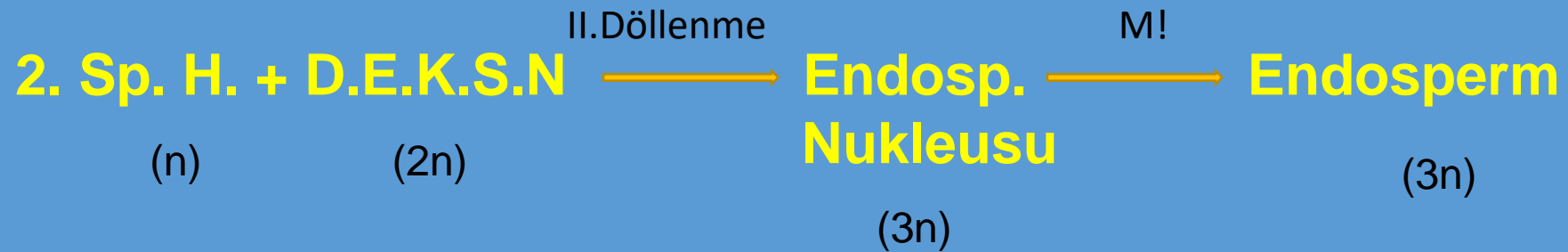


Çiçeğin yapısı

- Steril kısım: -periant (kaliks+korolla) -perigon
 ↓ ↓ ↓
 sepal petal tepal
- Fertil kısım: (andrekeum&ginekeum)
 ↓ ↓
 stamenler karpeller
 (pistil)

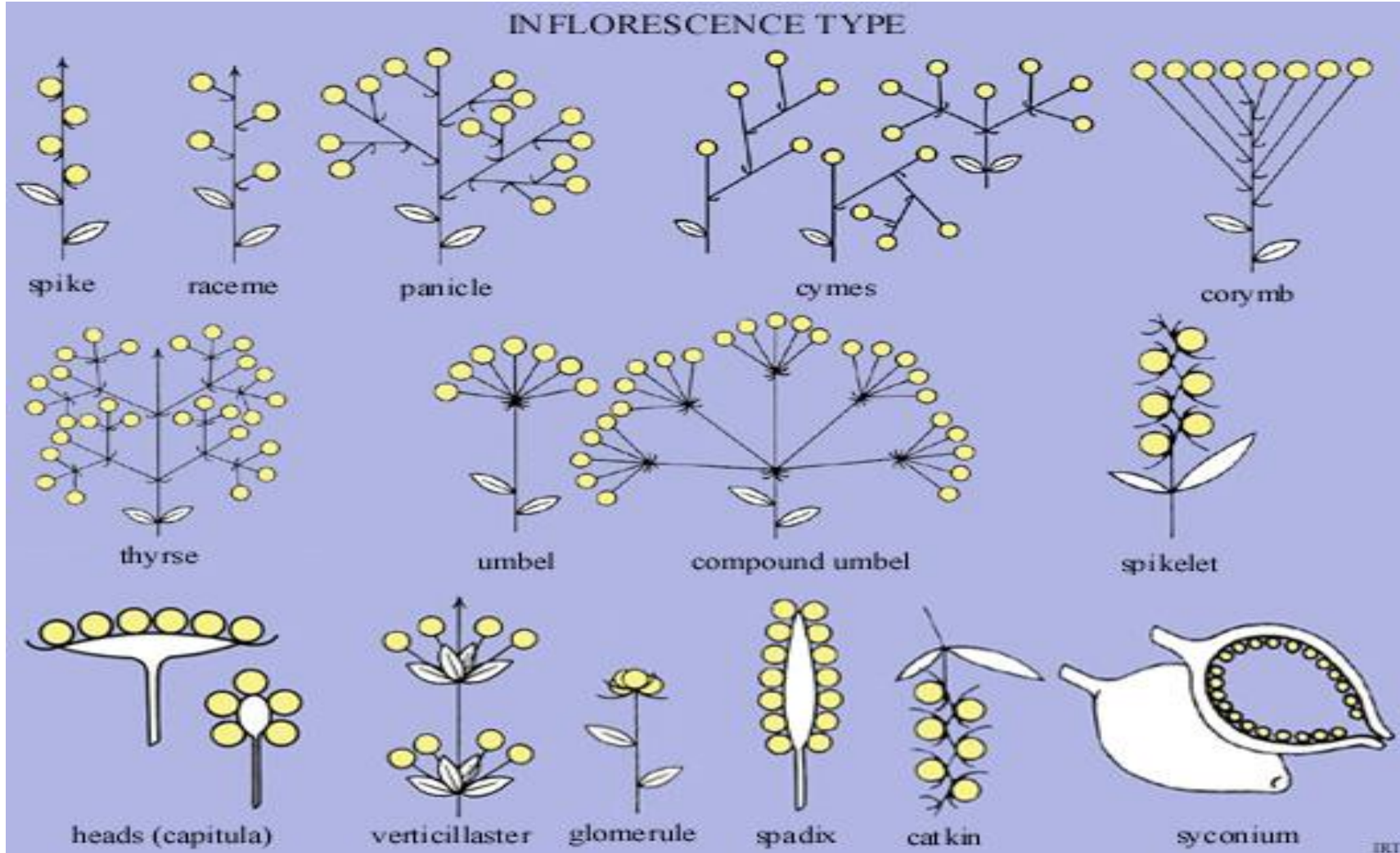


Çifte döllenme:



İnfloresans-çiçek durumu

- Rasemöz, bileşik rasemöz ve kimöz



RASEMÖZ: *Muscari*



SPIKA: *Triticum aestivum*



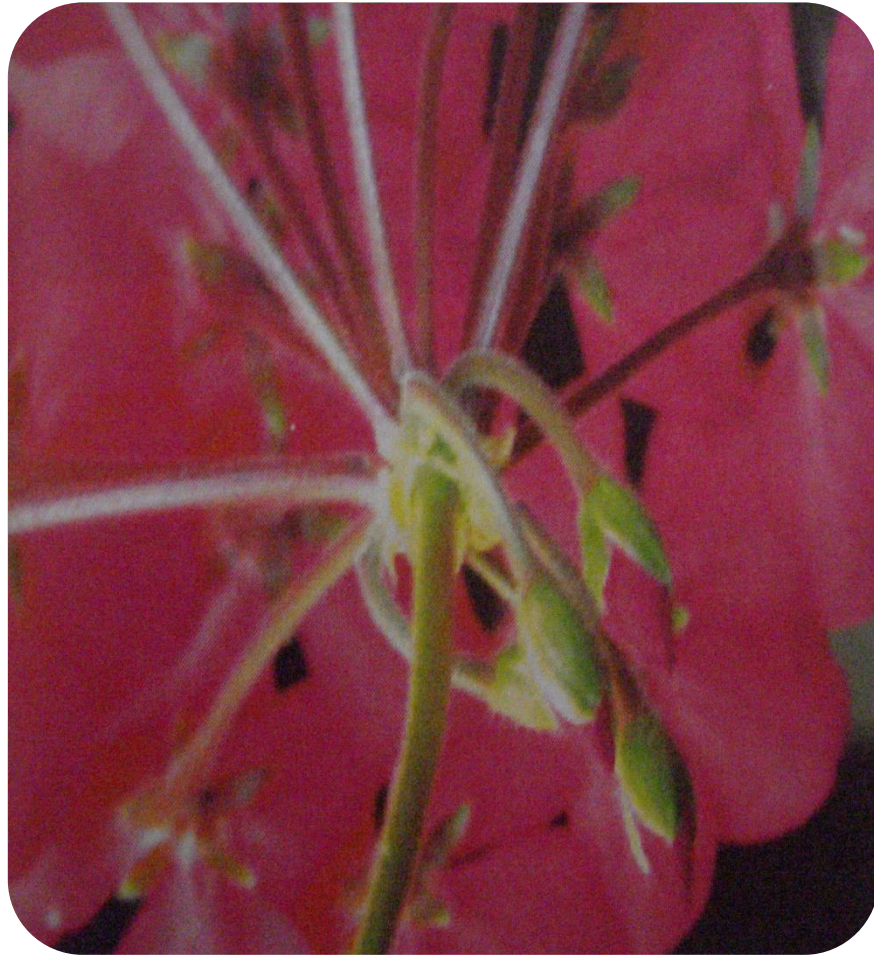
- **SPADIKS:** *Zea mays*



- **AMENTUM:** *Juglans regia*



- **UMBELLA:** *Pelargonium*



- **KORIMBUS:** *Crateagus*



- **KAPİTULUM:** *Centaura*

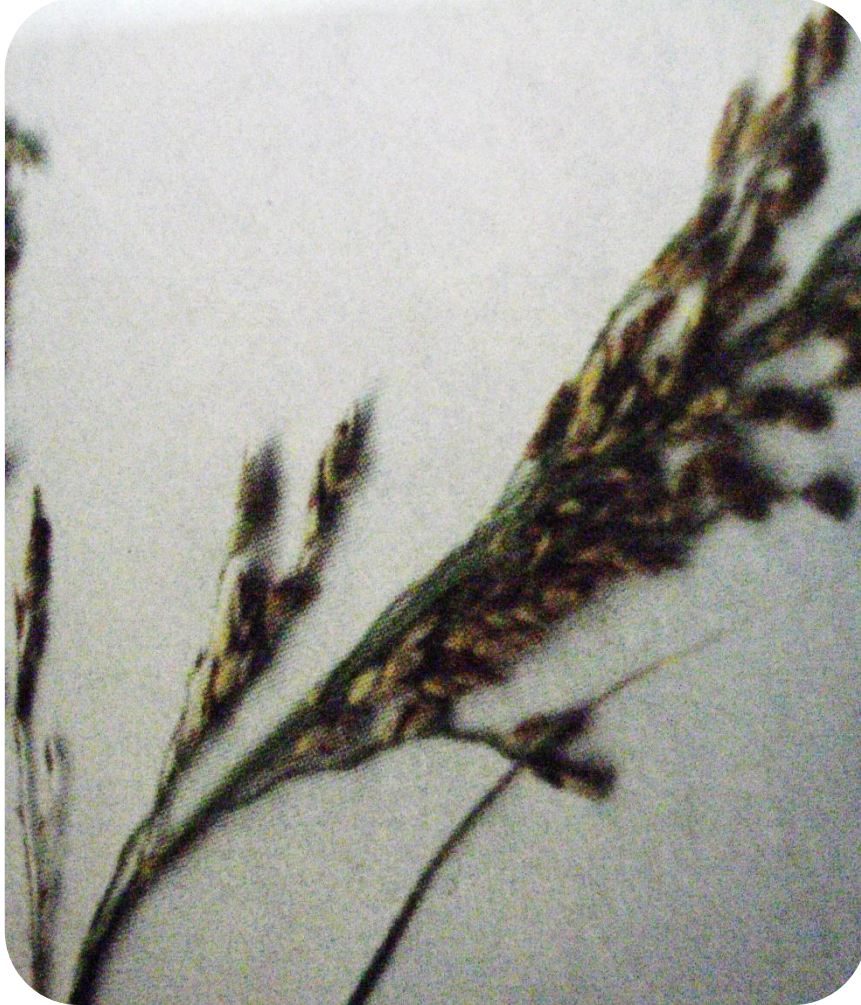


Bileşik rasemöz:

- **PANİKULA:** *Vitis vinifera*



- **BİLEŞİK SPIKA:***Sorghum*



- **BİLEŞİK UMBELLA:***Heracleum*

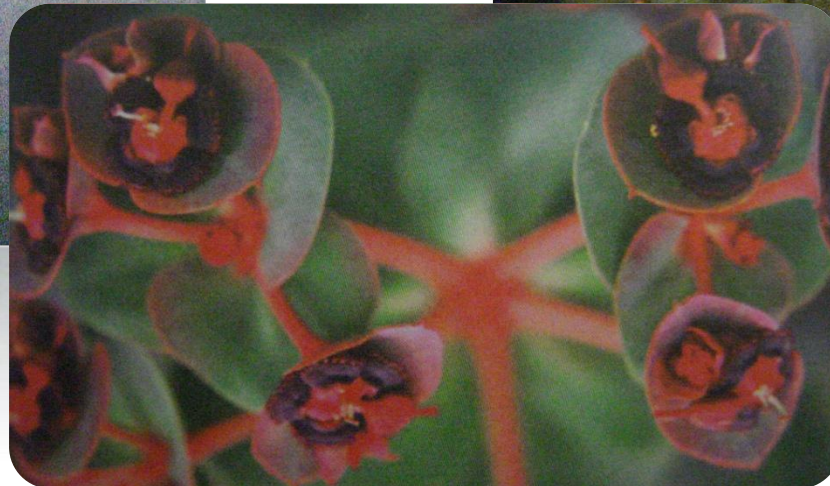


Kimöz:

- Monokazyum: *Onosma*

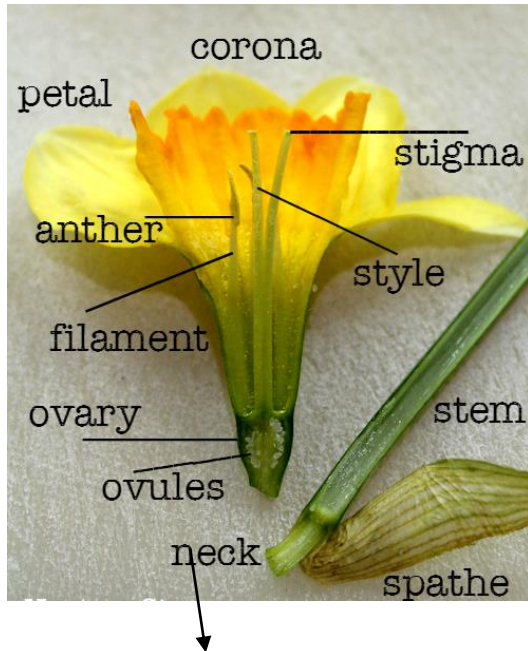


- Dikazyum: *Arenaria*



- PLEIOKAZYUM: *Euphorbia*

Monocot vs. Dicot flowers



Monocots
Parts in 3s



Dicots
Parts in 4s or 5s



Konu: **Generatif organlar- Çiçek**
Alt konu: **Monokotil çiçek**
Fam: Amaryllidaceae
Sp.: *Narcissus sp. (Nergis)*
Formül: $[T_{3+3} A_{3+3}] G_3$

Konu: **Generatif organlar- Çiçek**
Alt konu: **Dicot flowers diagram**
Fam: Asteraceae
Sp.: *Matricaria chamomilla (Papatya)*
Formül: $K_{\infty} C_{\infty} A_{10} G_{(5)}$