

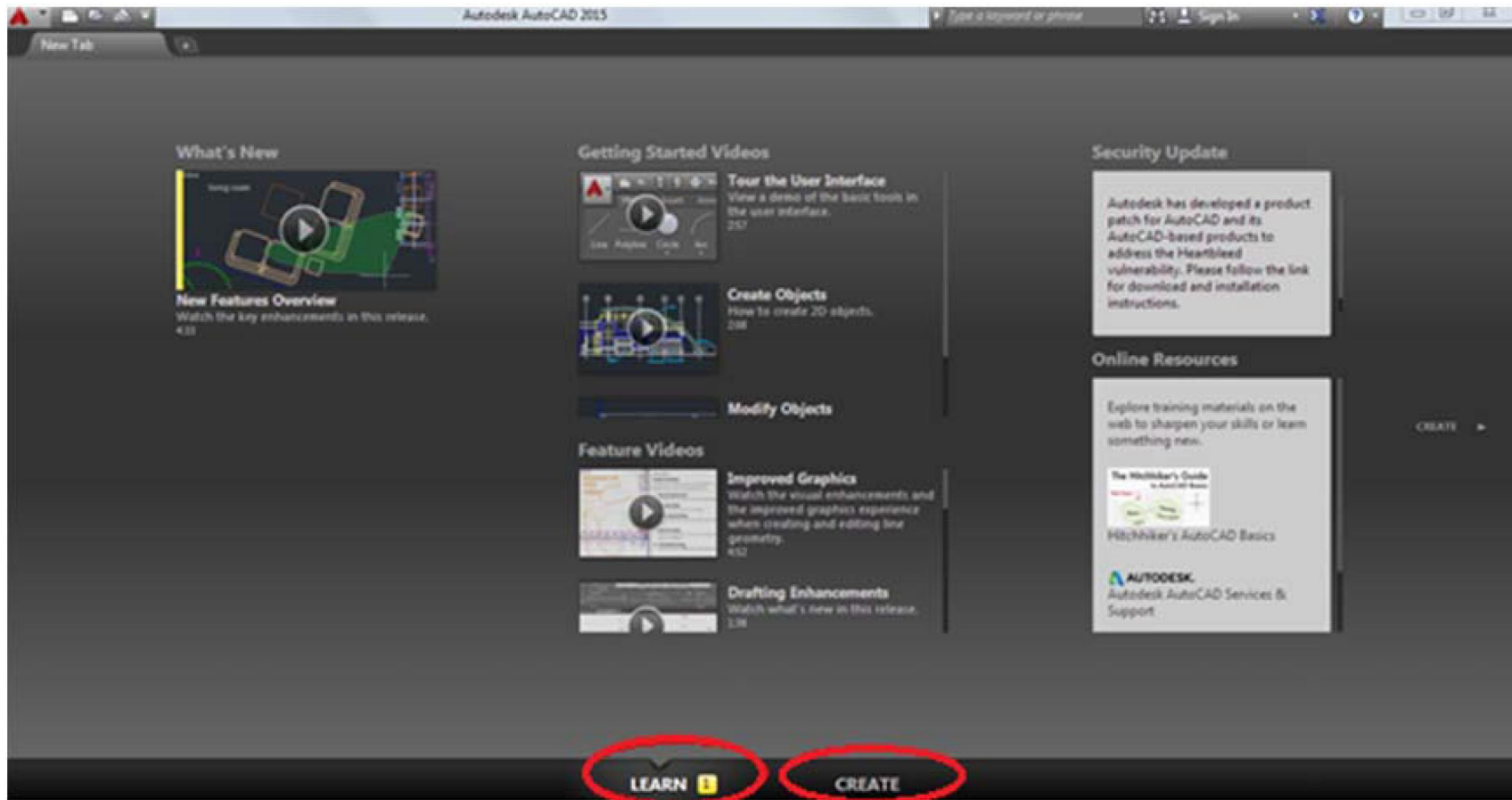
# OPZ 110 Teknik Resim II

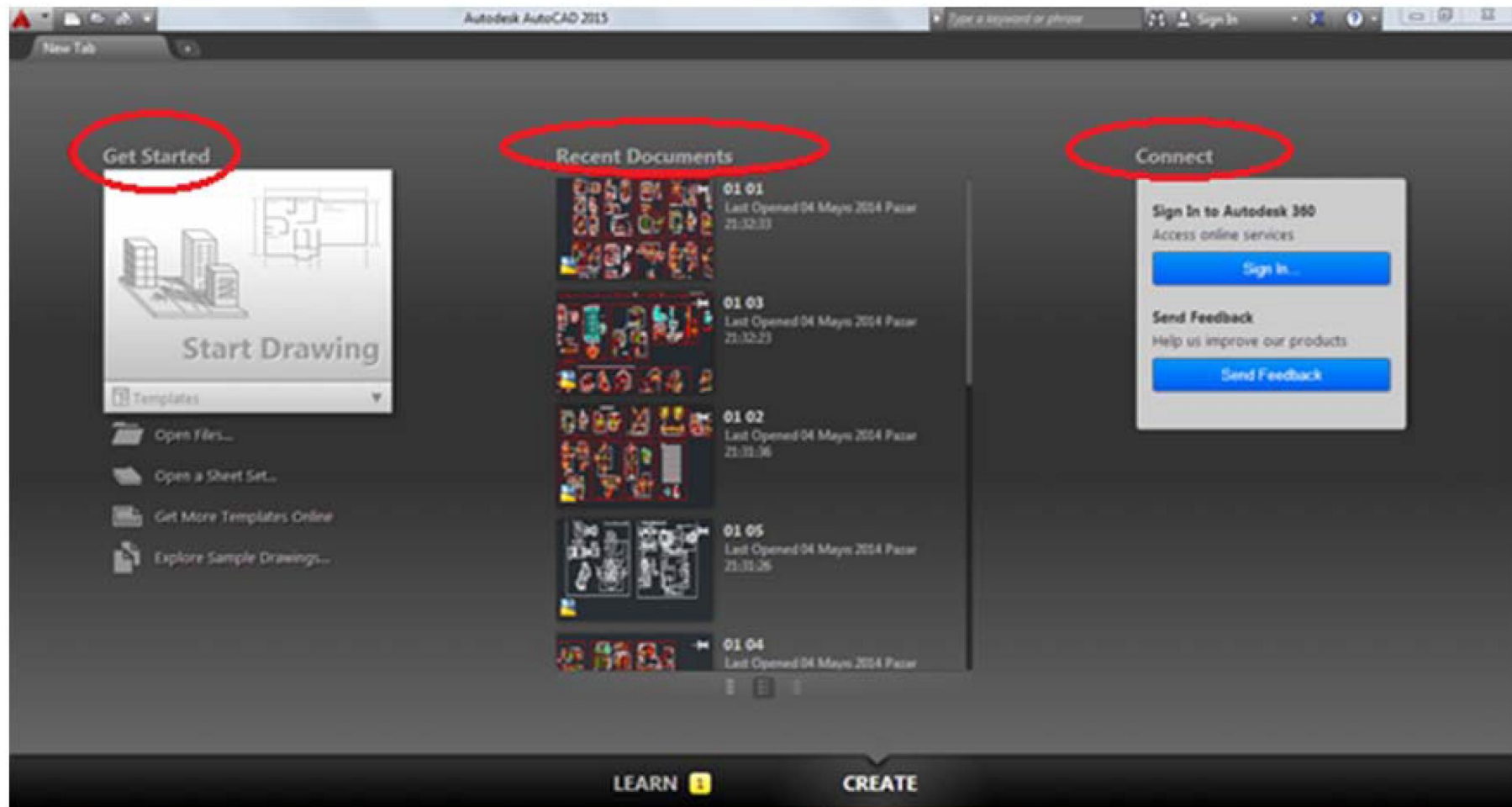
Hazırlayan  
Öğr.Gör.Yük.Müh  
A.Koray ÖZGÜN

# **BÖLÜM 1**

## **BAŞLANGIÇ**

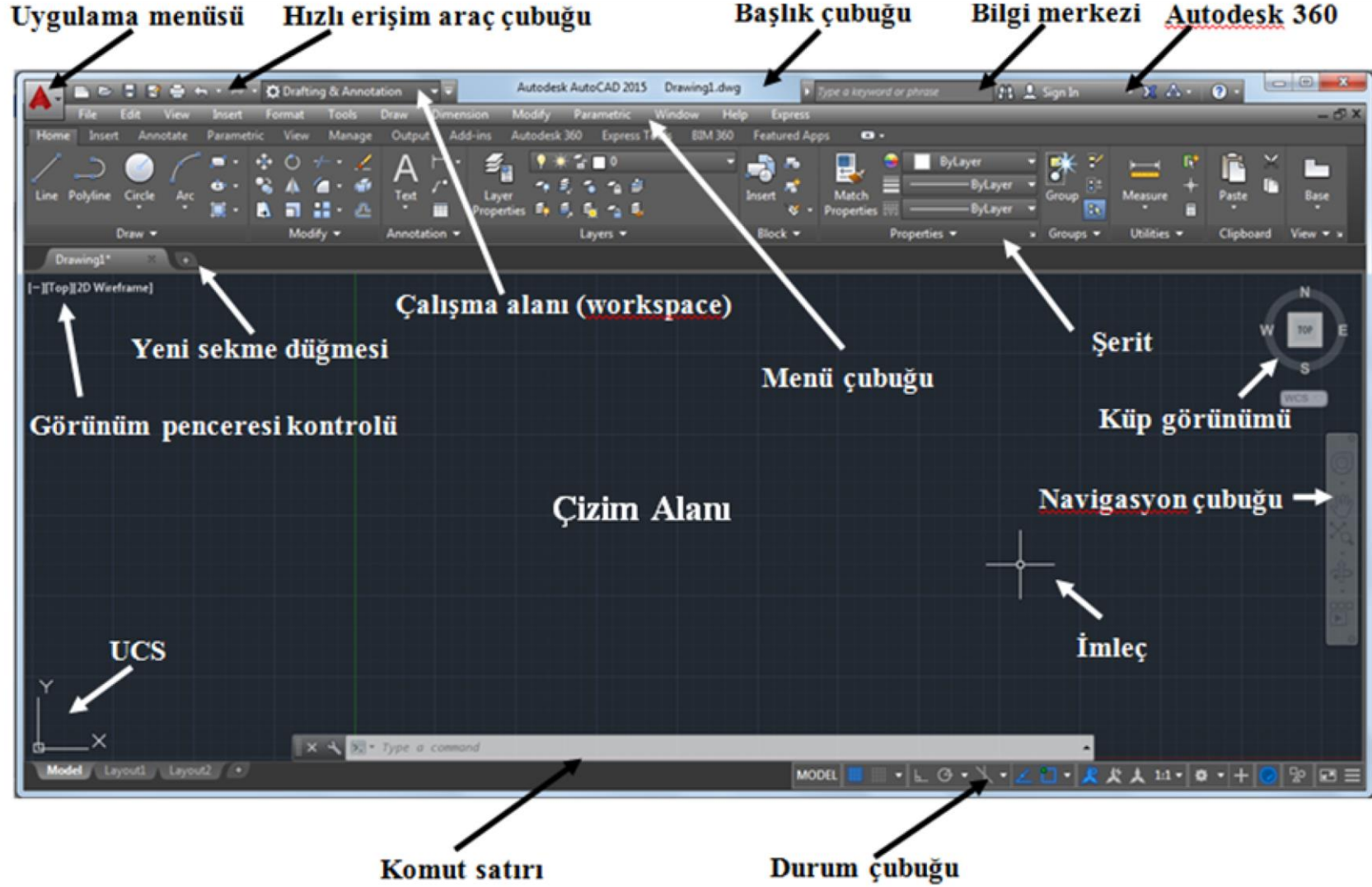
# AutoCAD'i Başlatmak



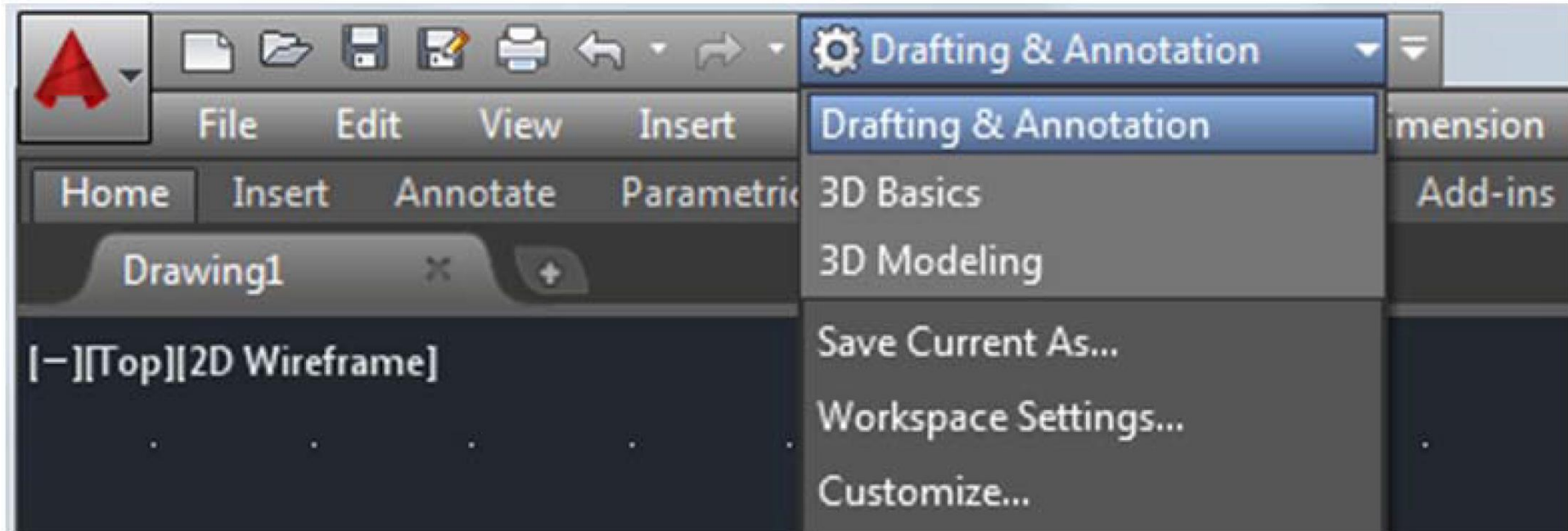


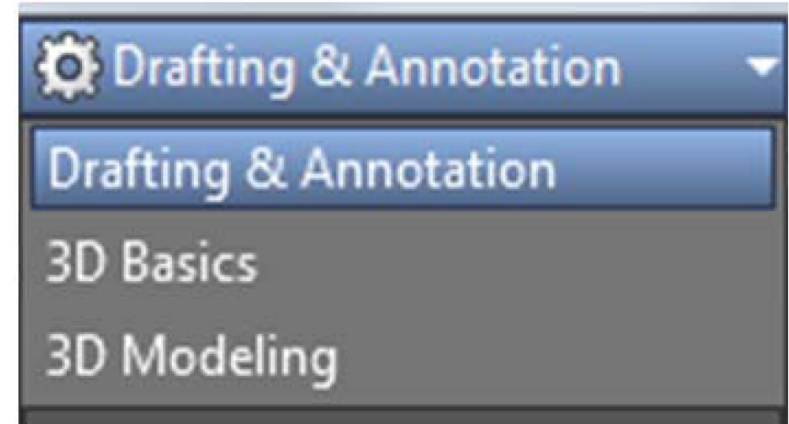
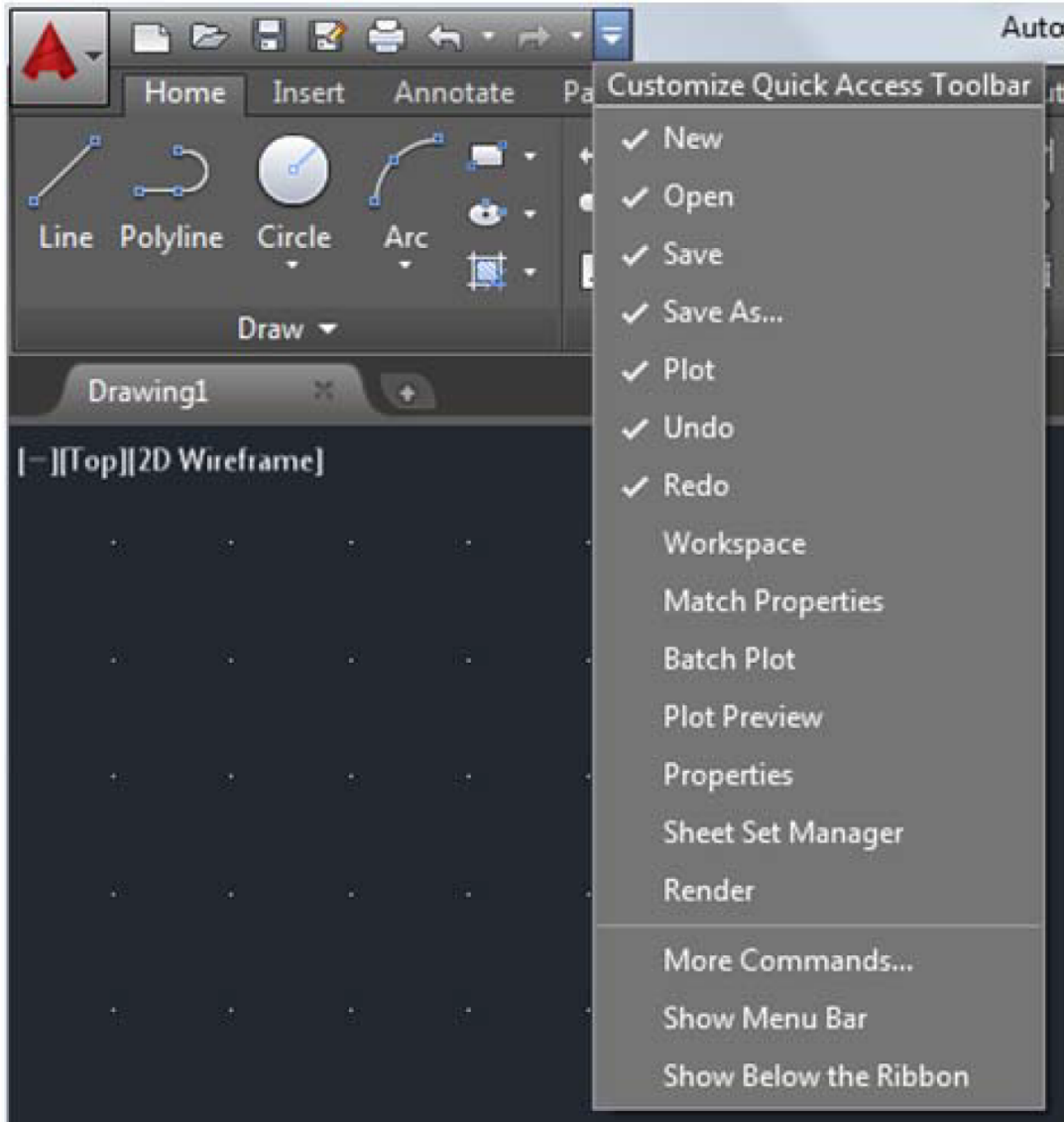


# Çizime Başlamak

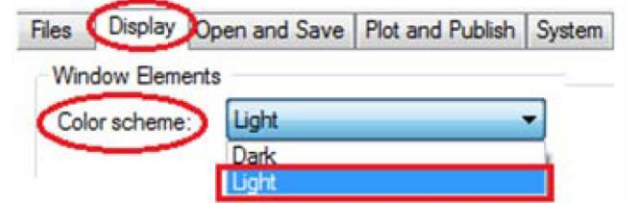
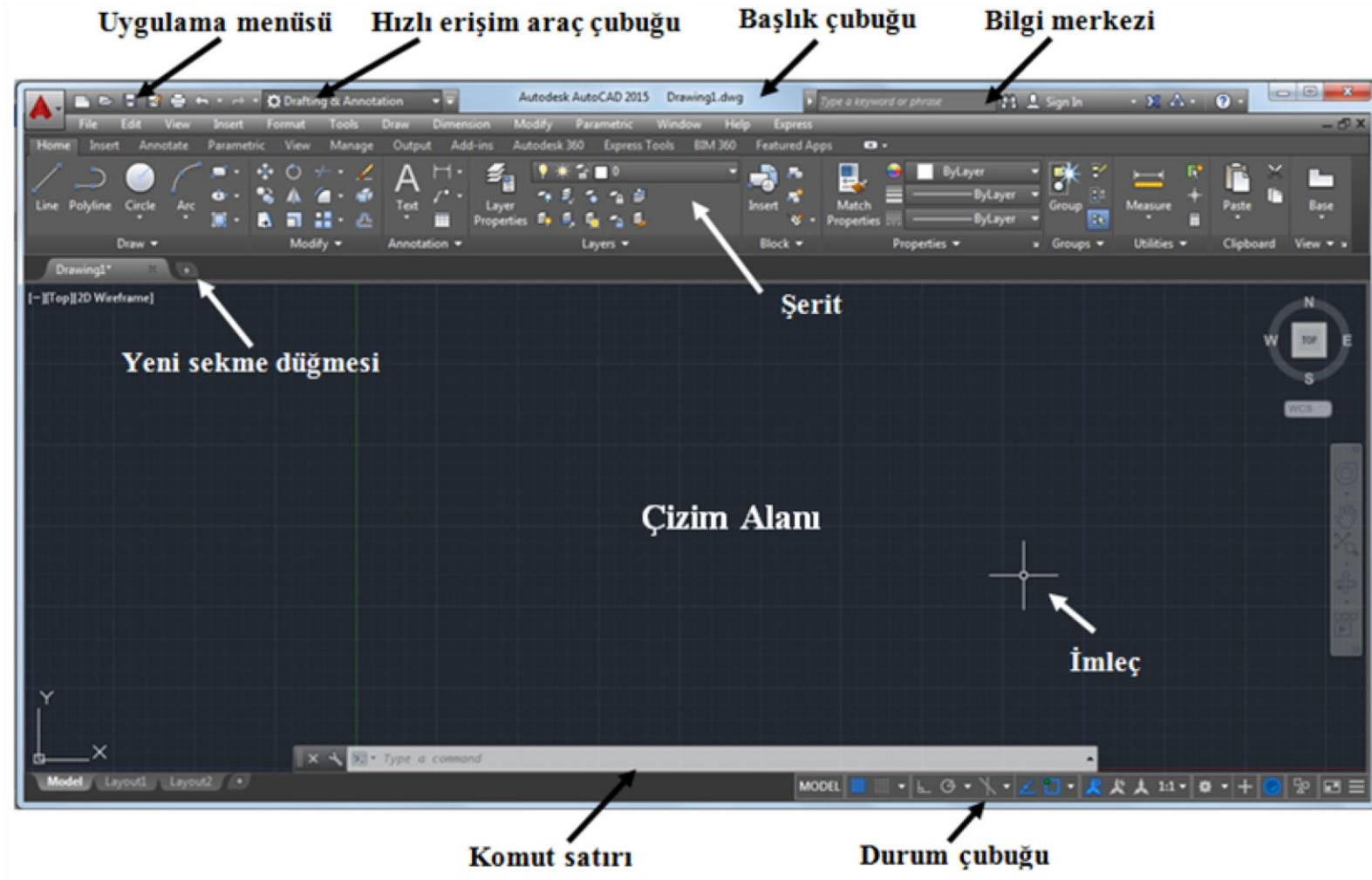


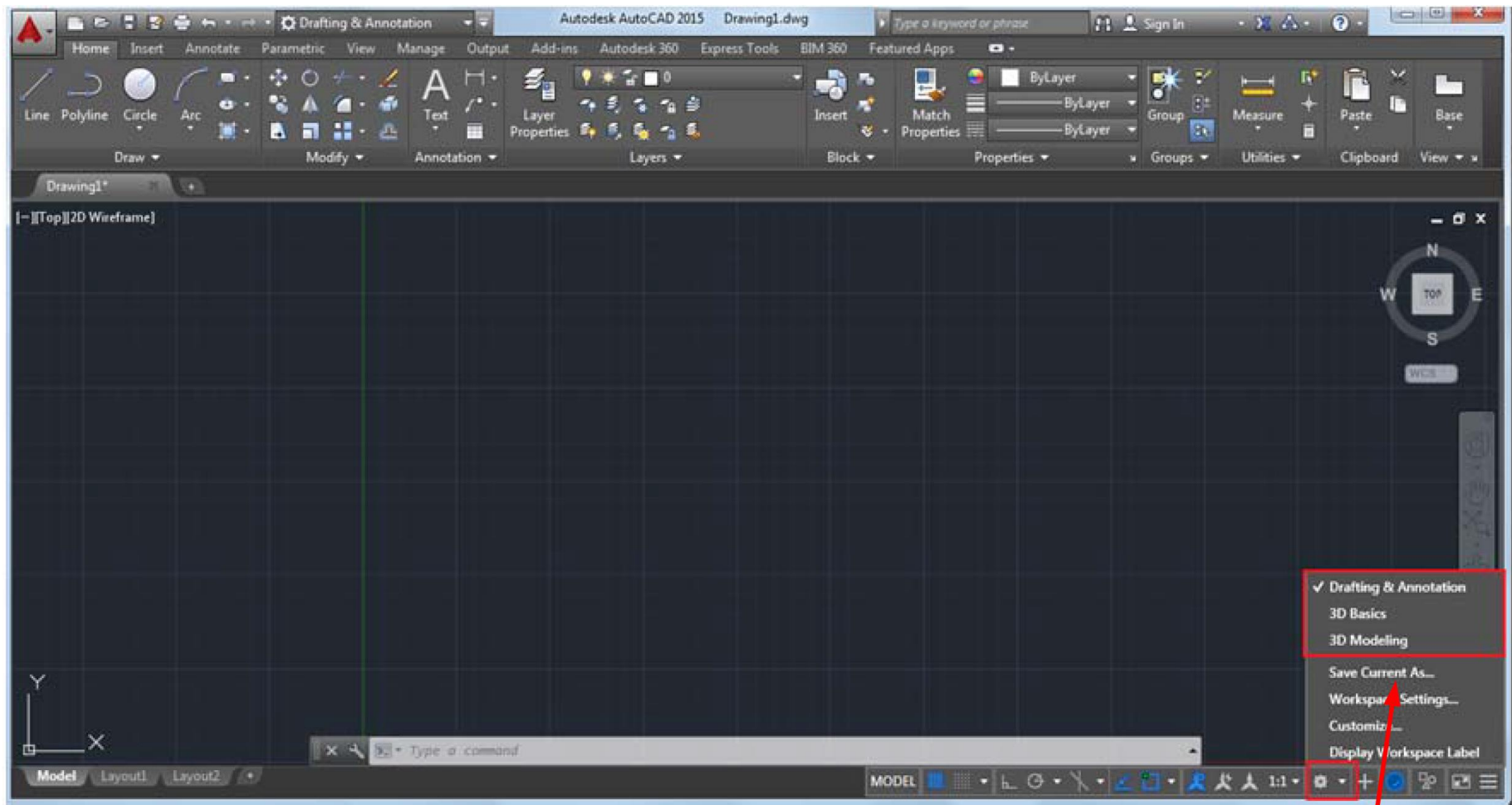
# AutoCAD Çalışma Alanı

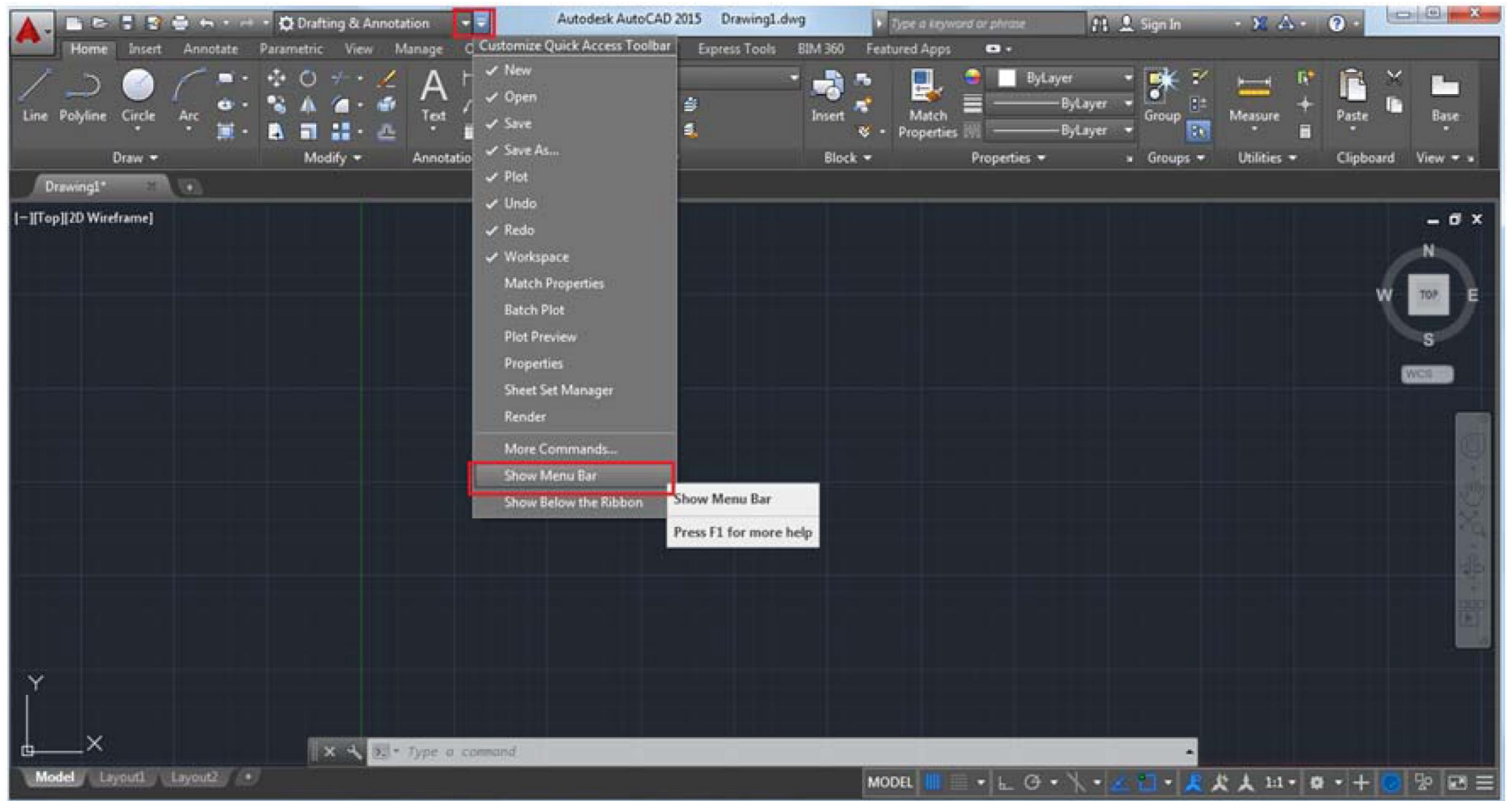


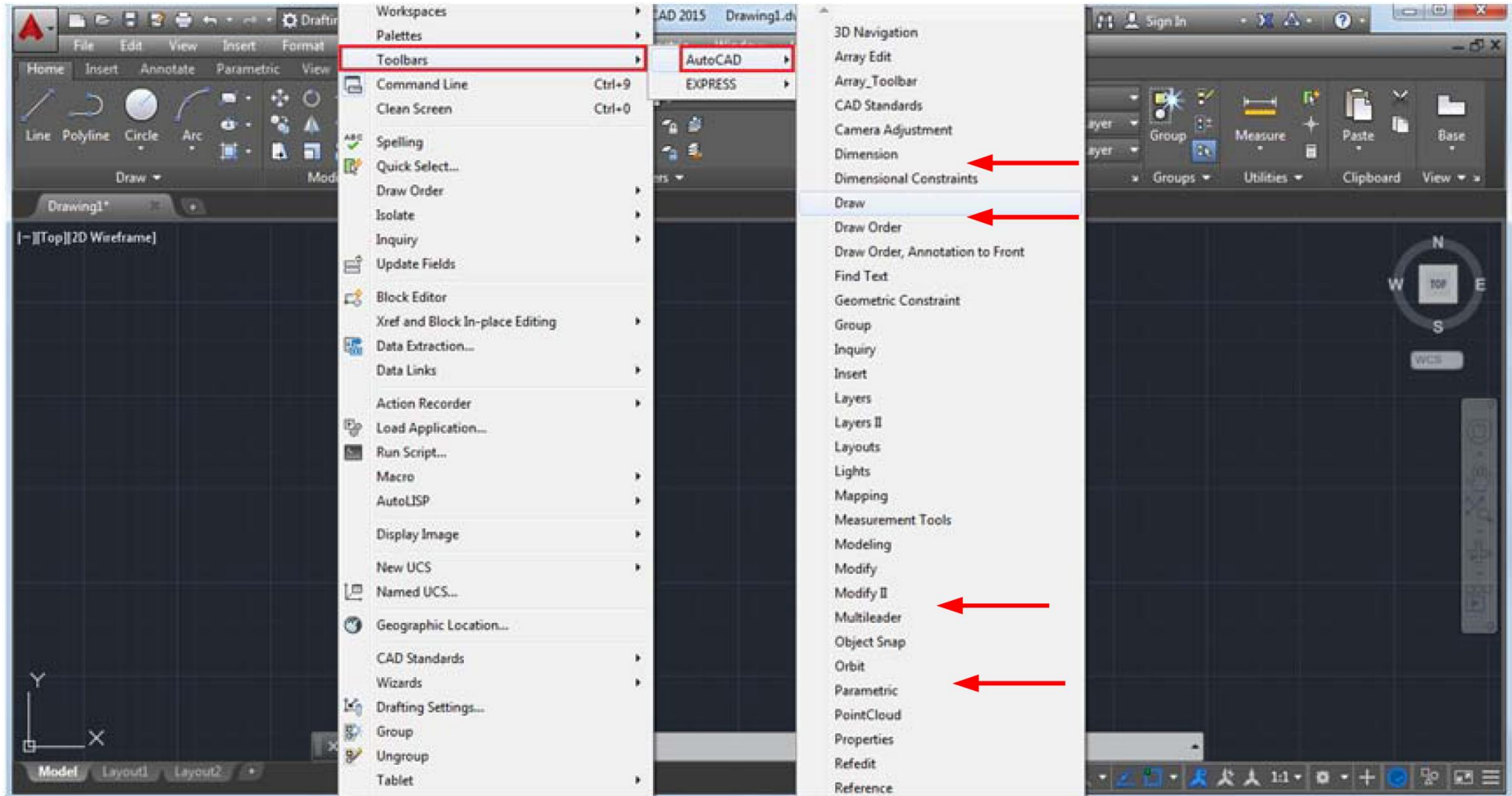


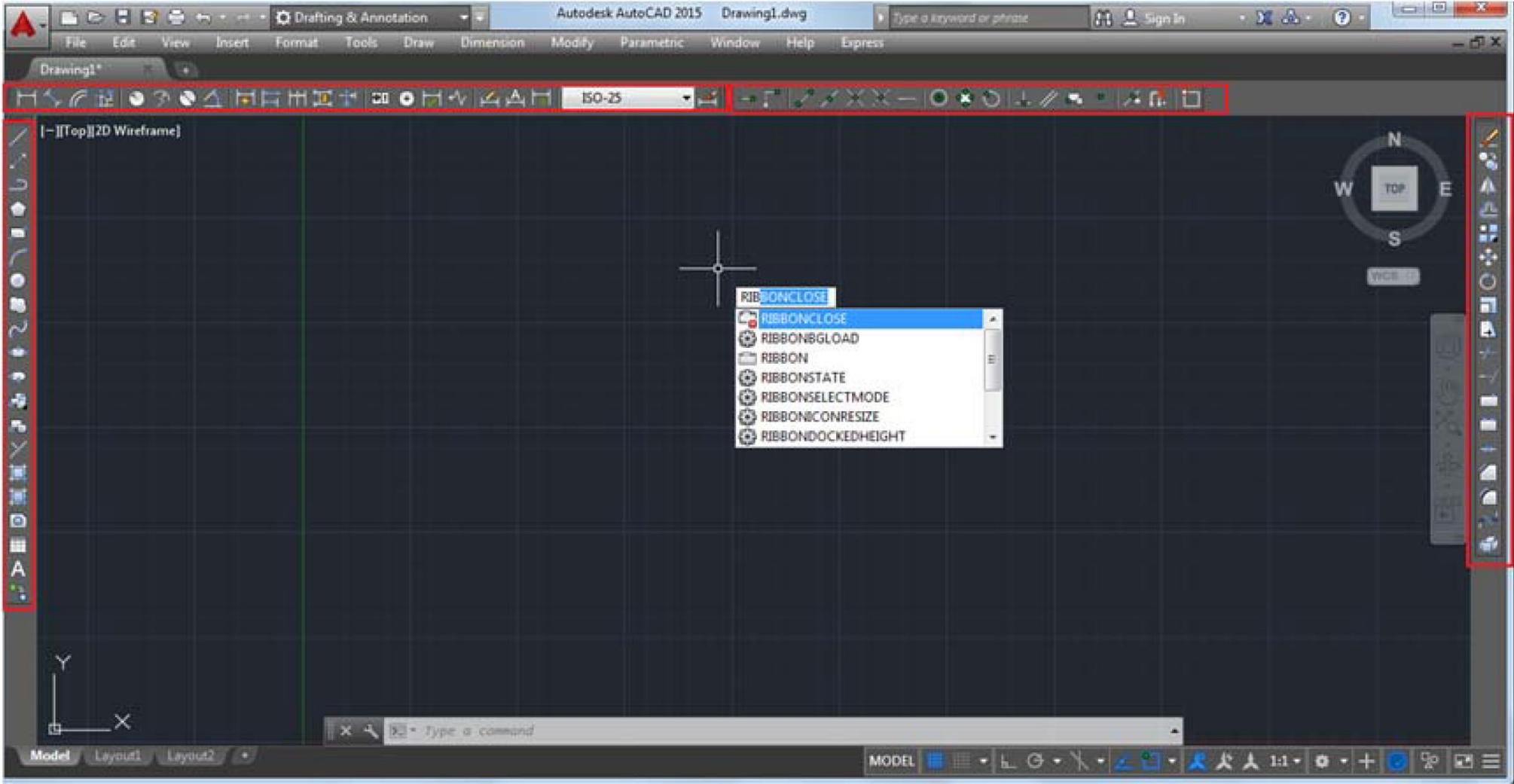




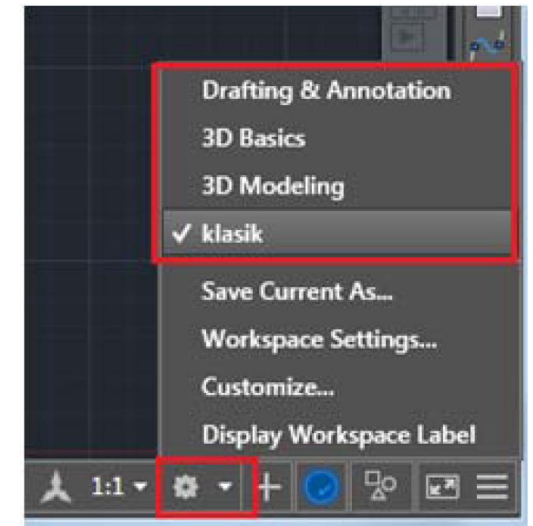
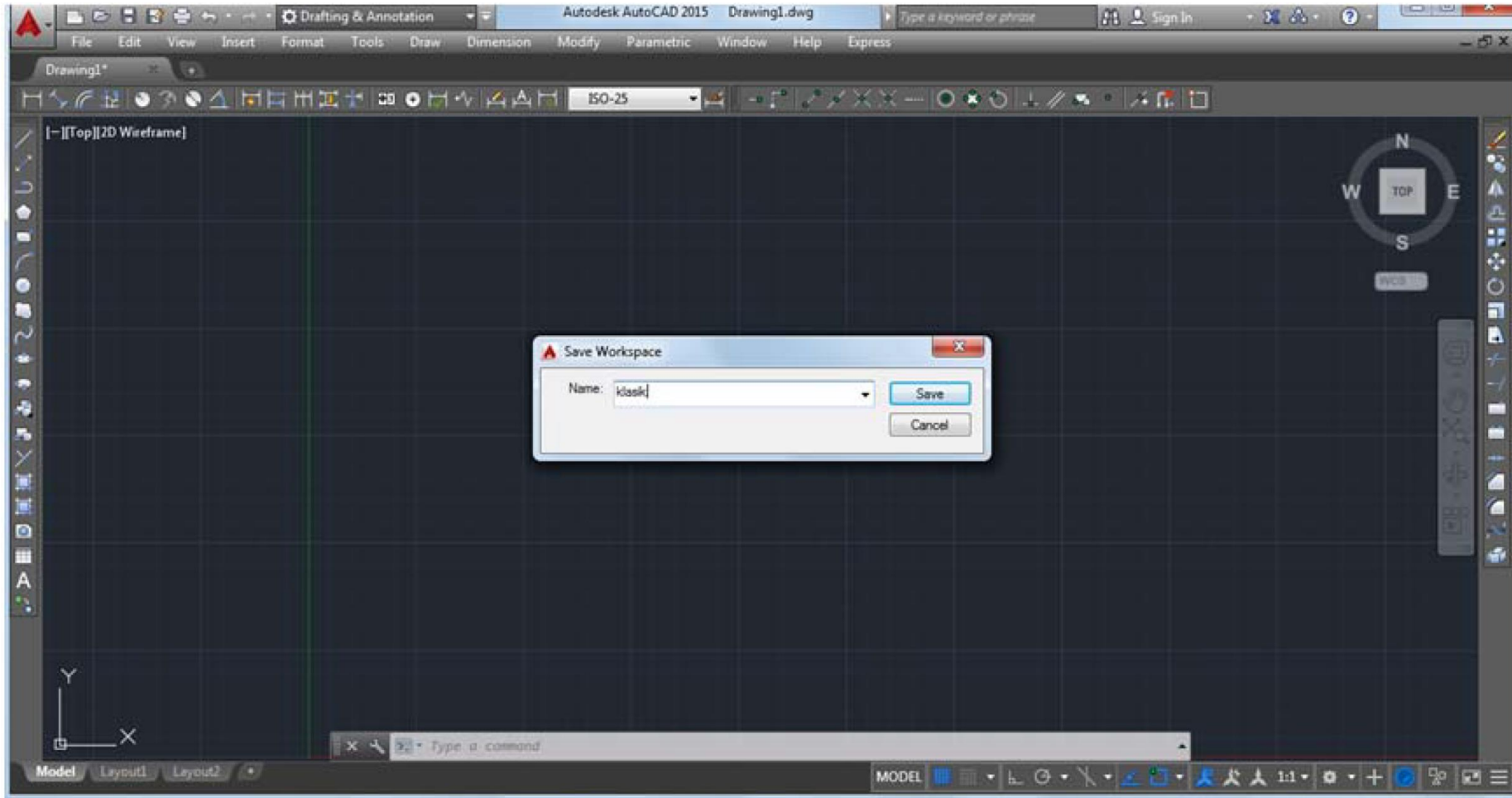




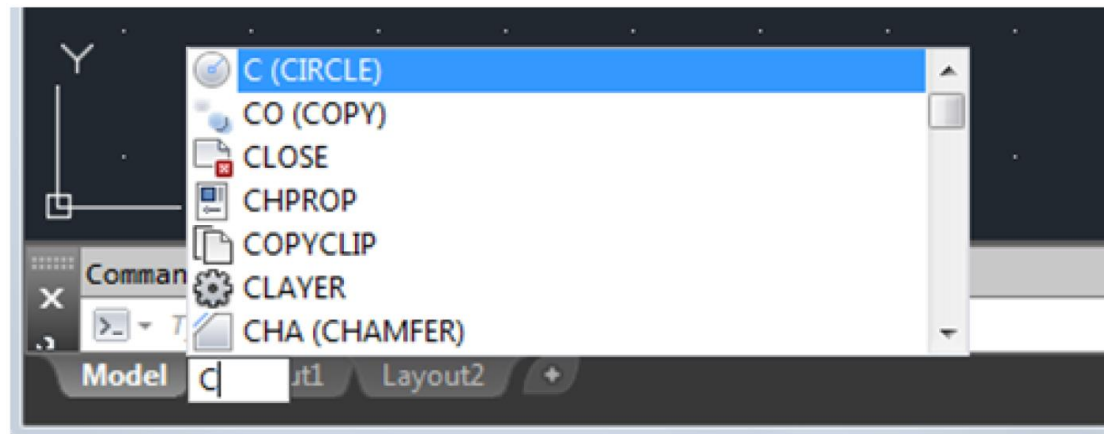




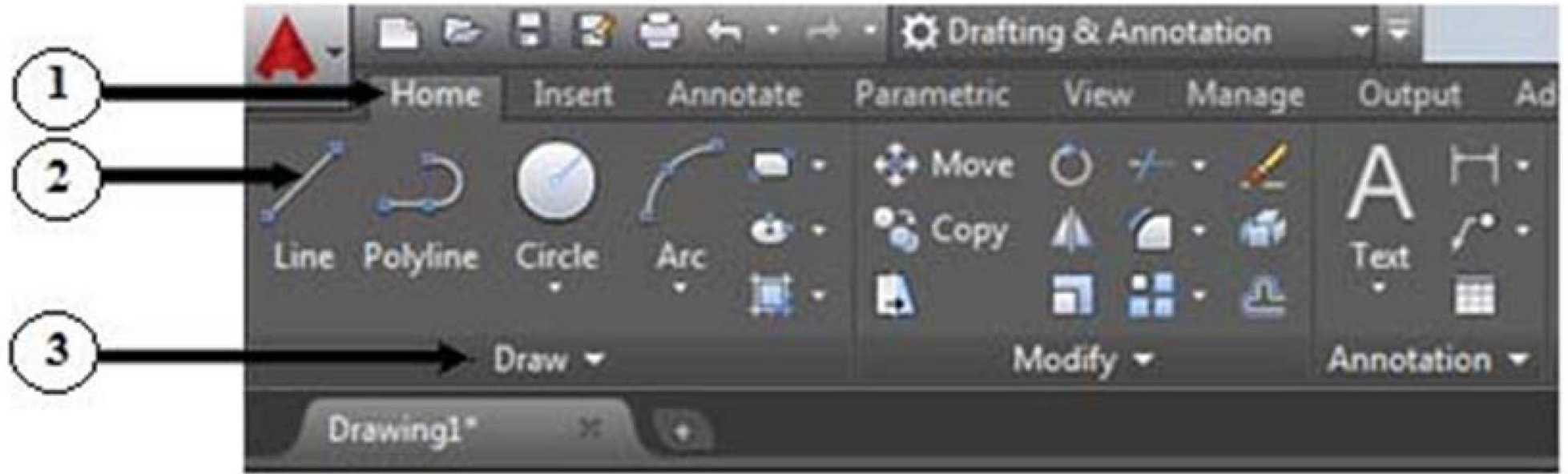




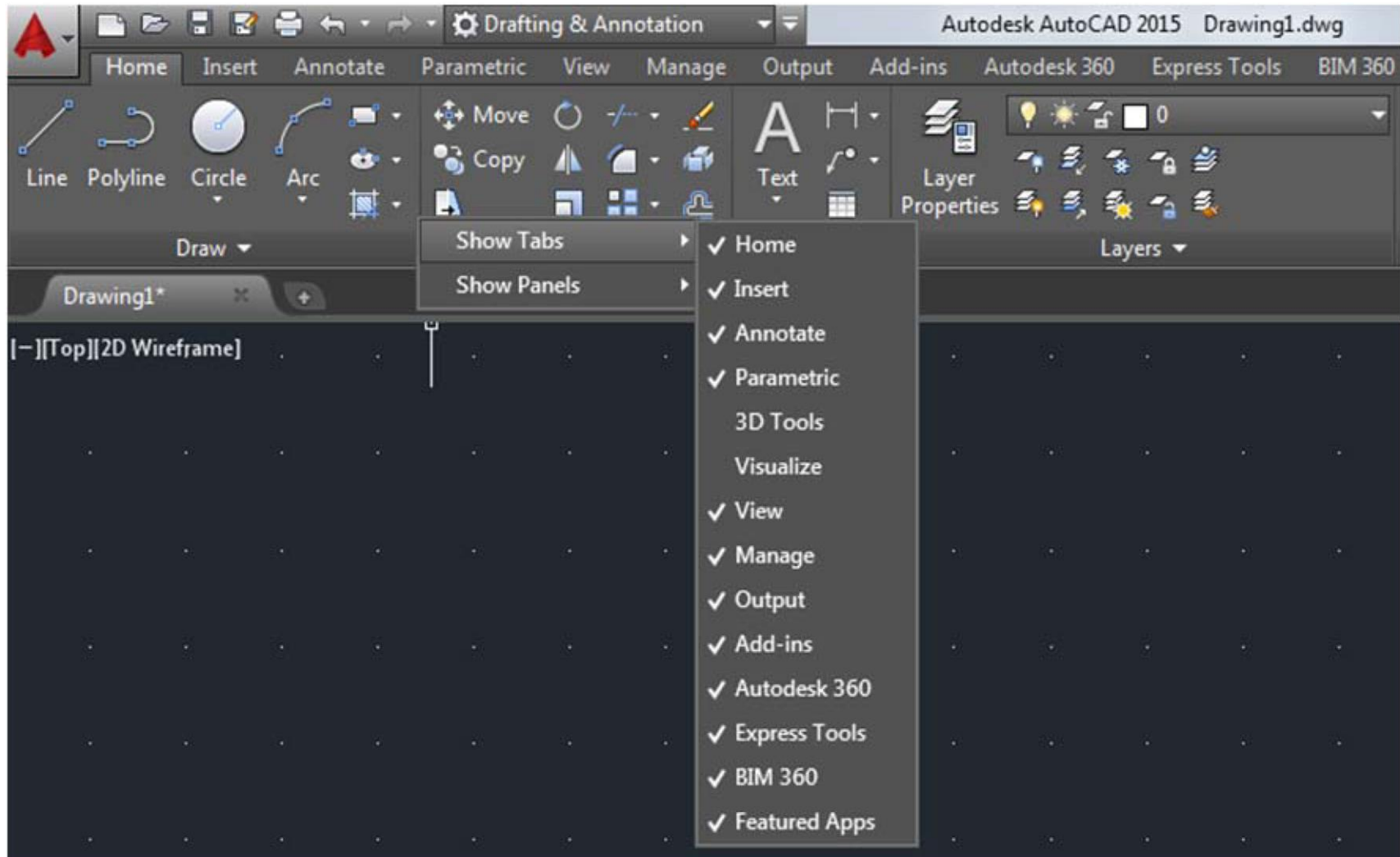
# Komut Penceresinde Çalışmak

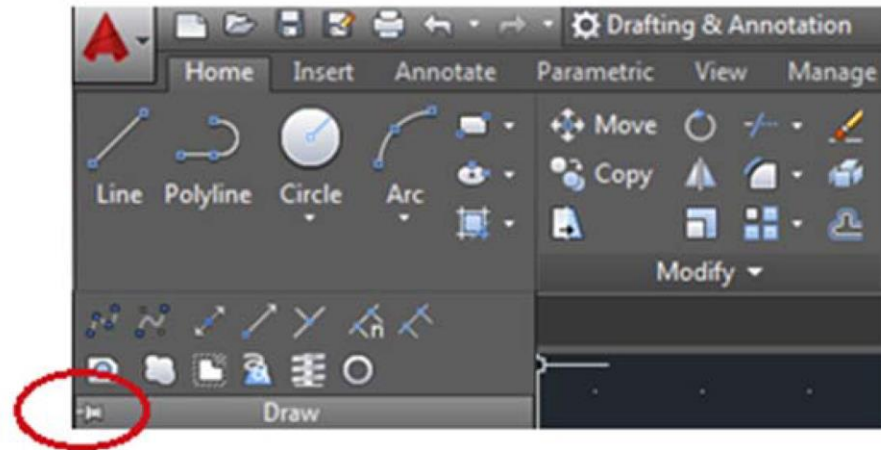
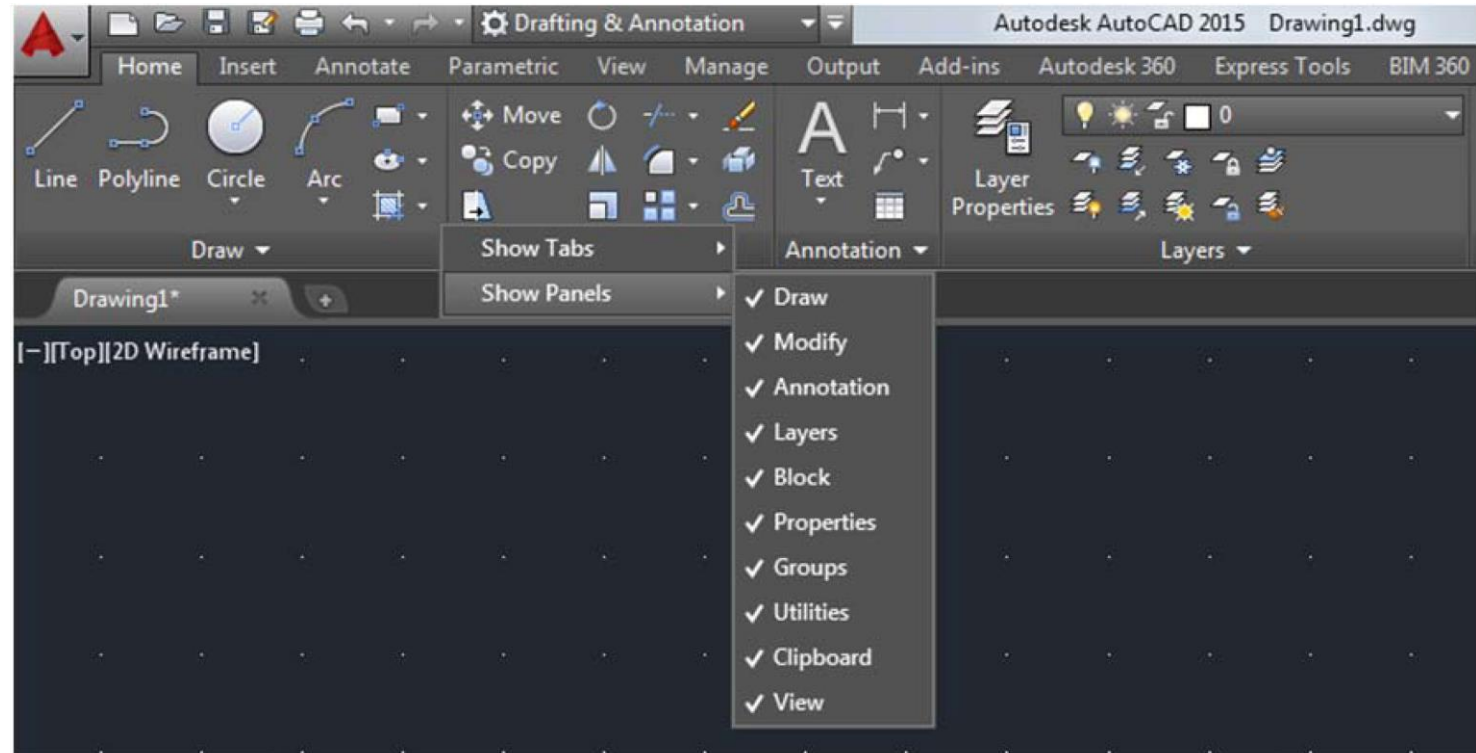


# Şeridi Kullanmak

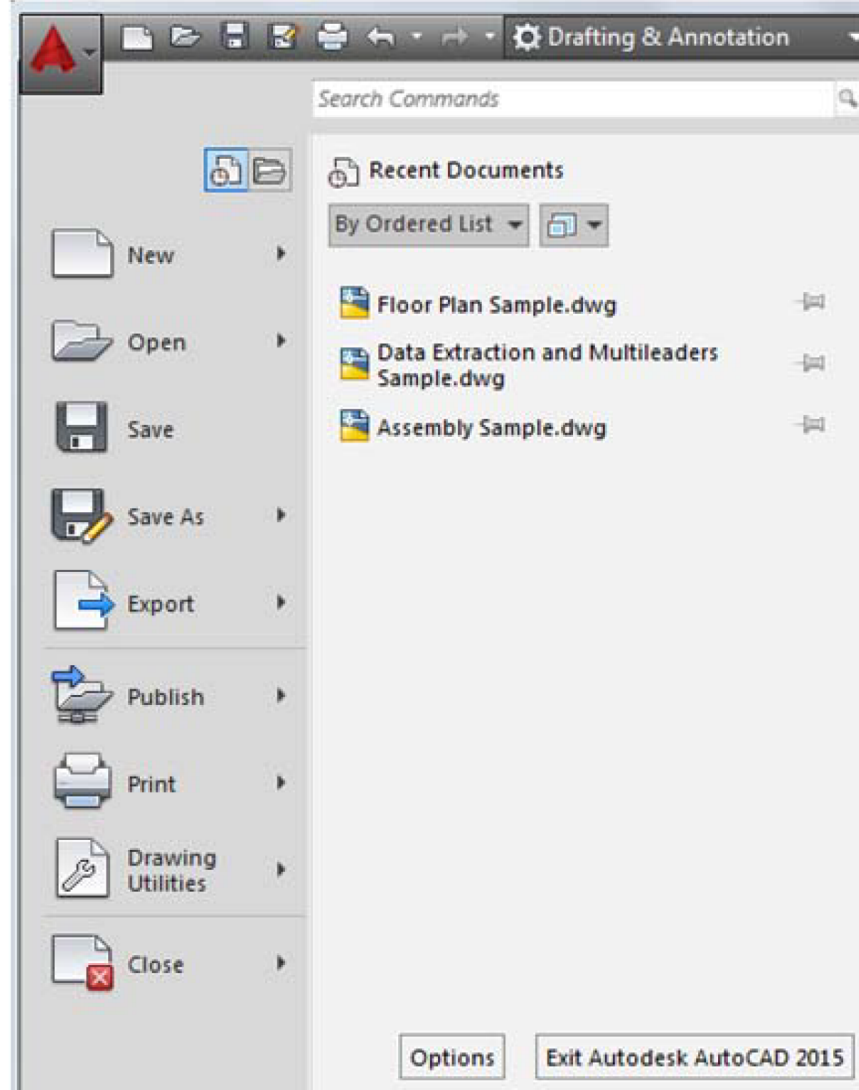




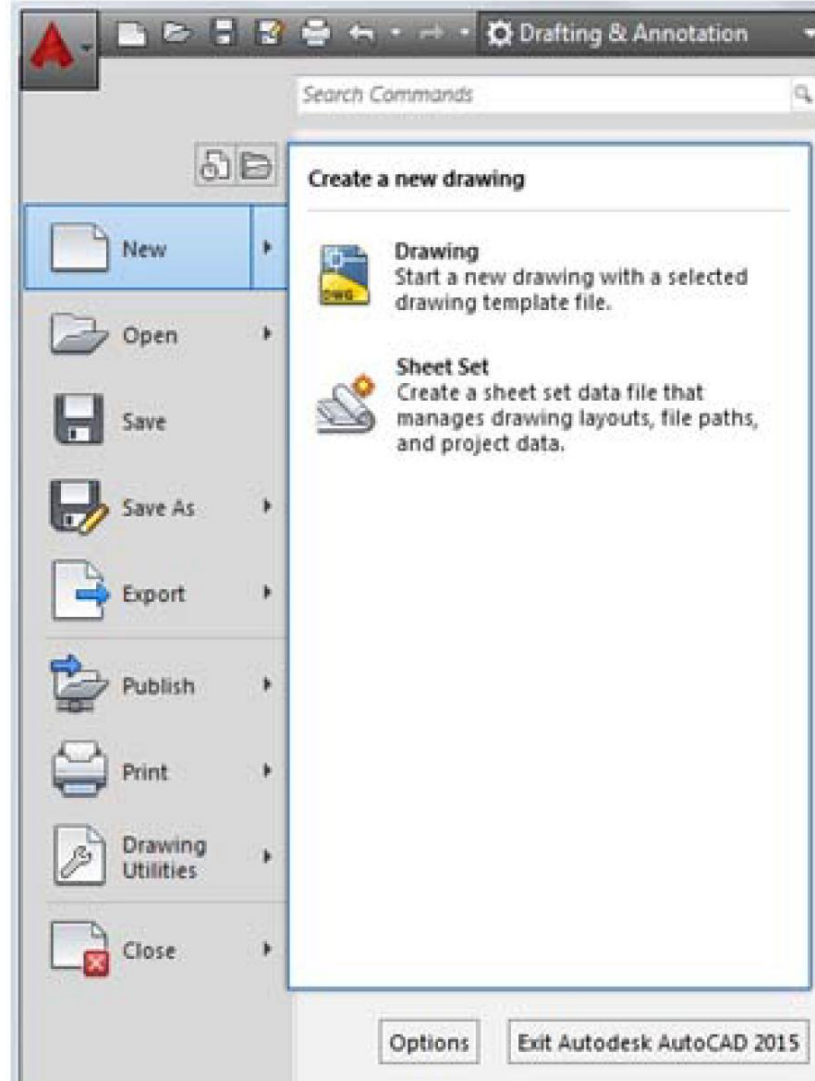


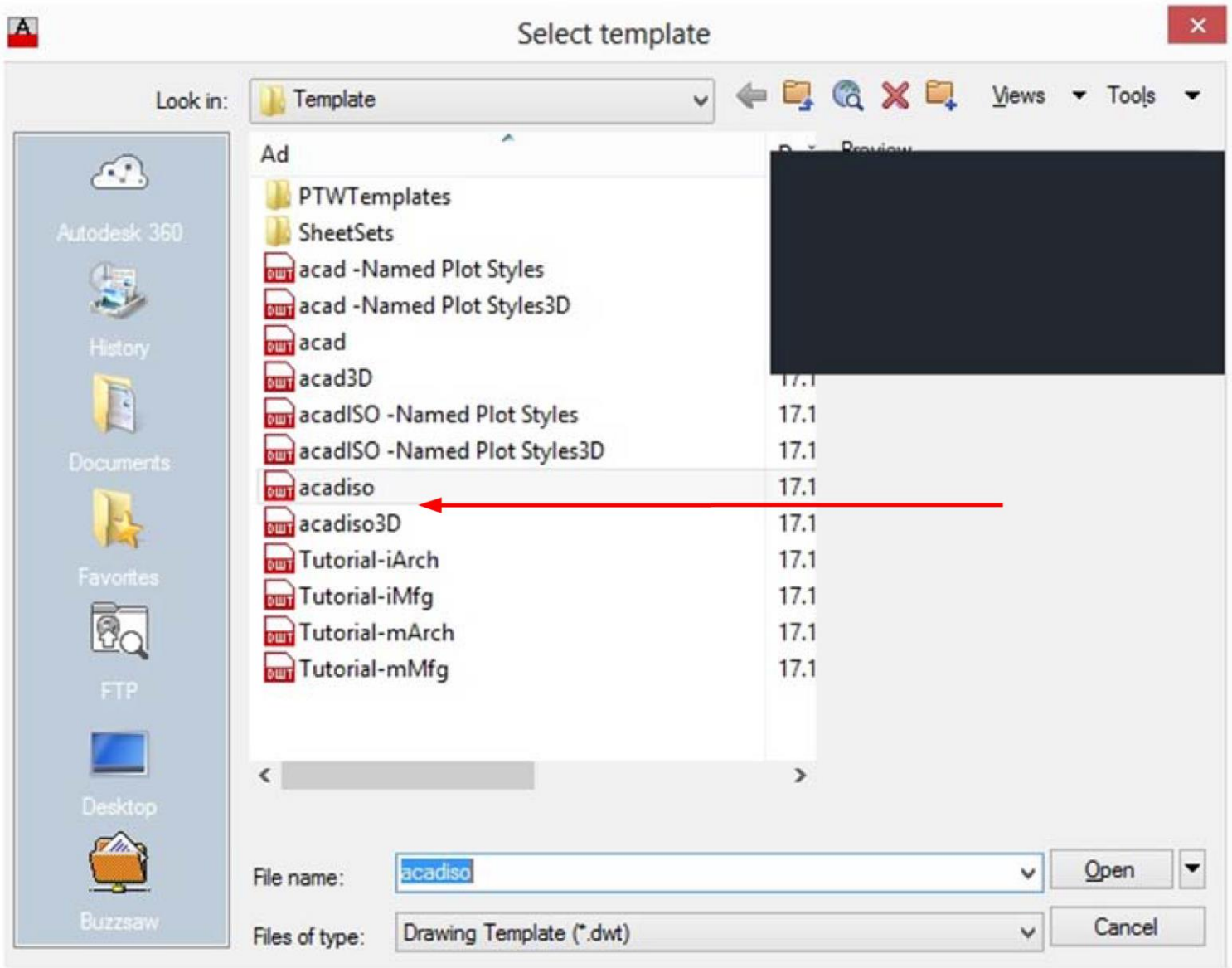


# Uygulama Menüsünü Kullanma

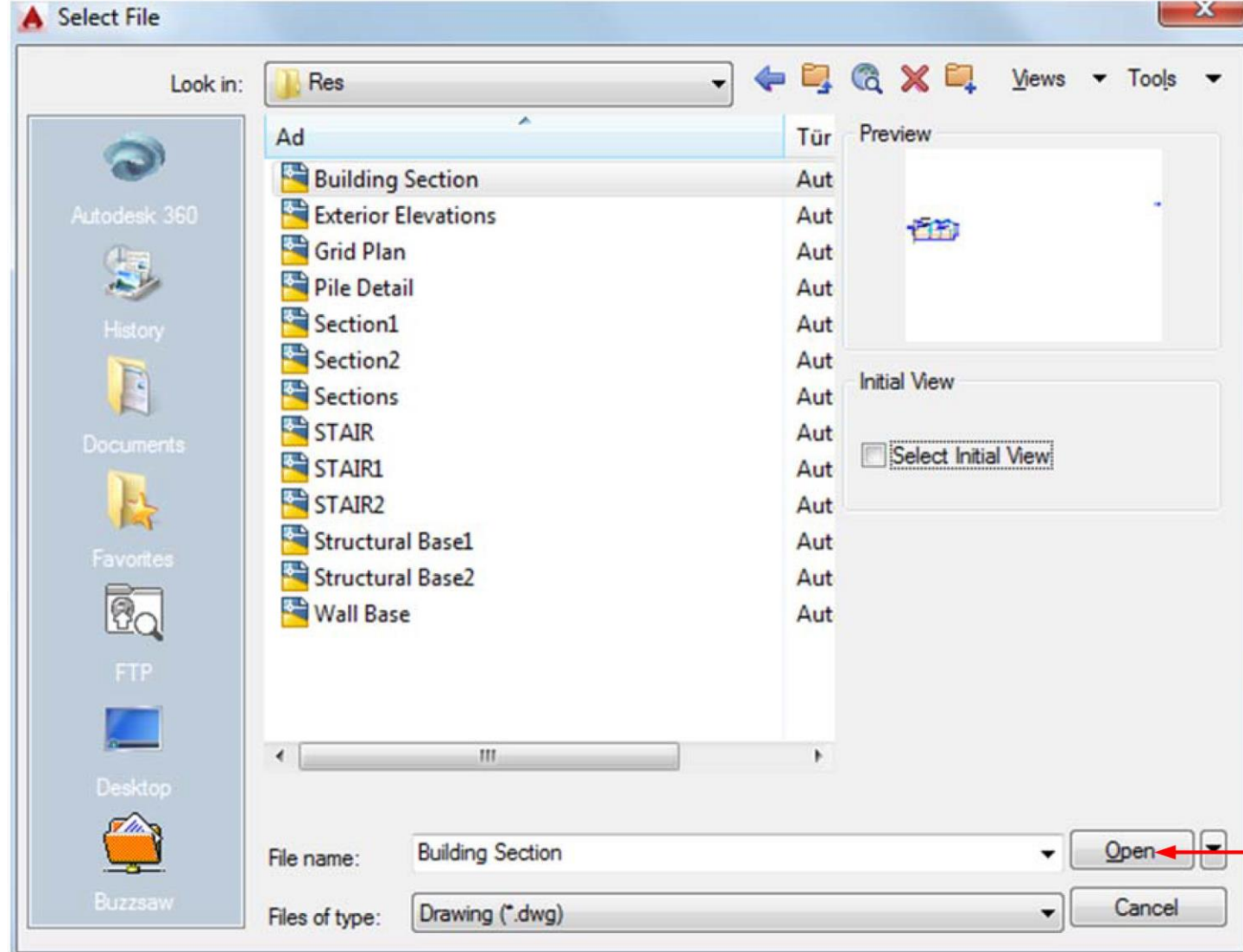


# Yeni Bir Çizim Oluřturma



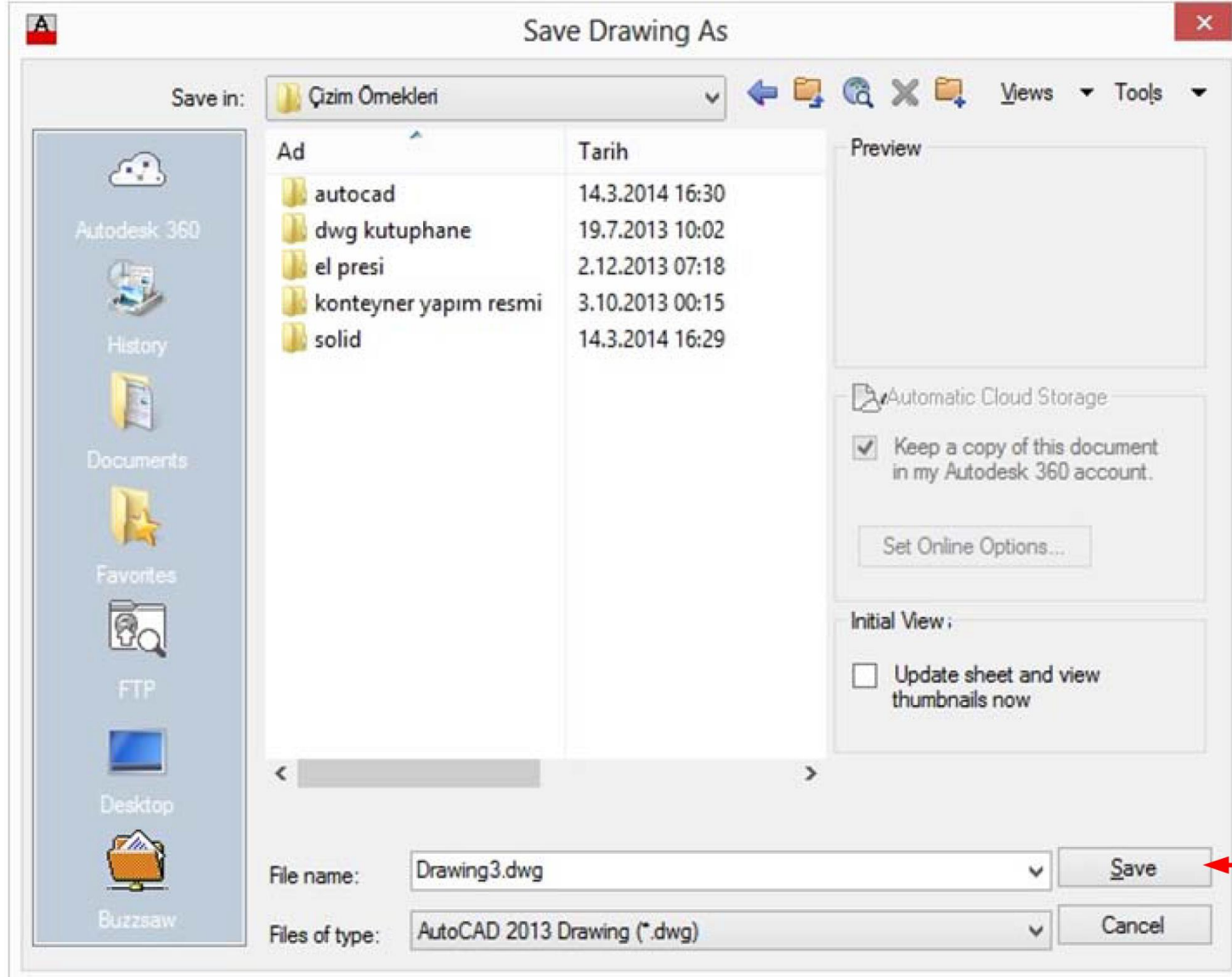


# Var Olan Bir Çizimi Açmak





# Çizimi Kaydetmek



# Çizimi Başka Dosya Türlerine Aktarmak Seçenekler

