



LIMNOLOGY 5

Prof. Dr. Nilsun Demir

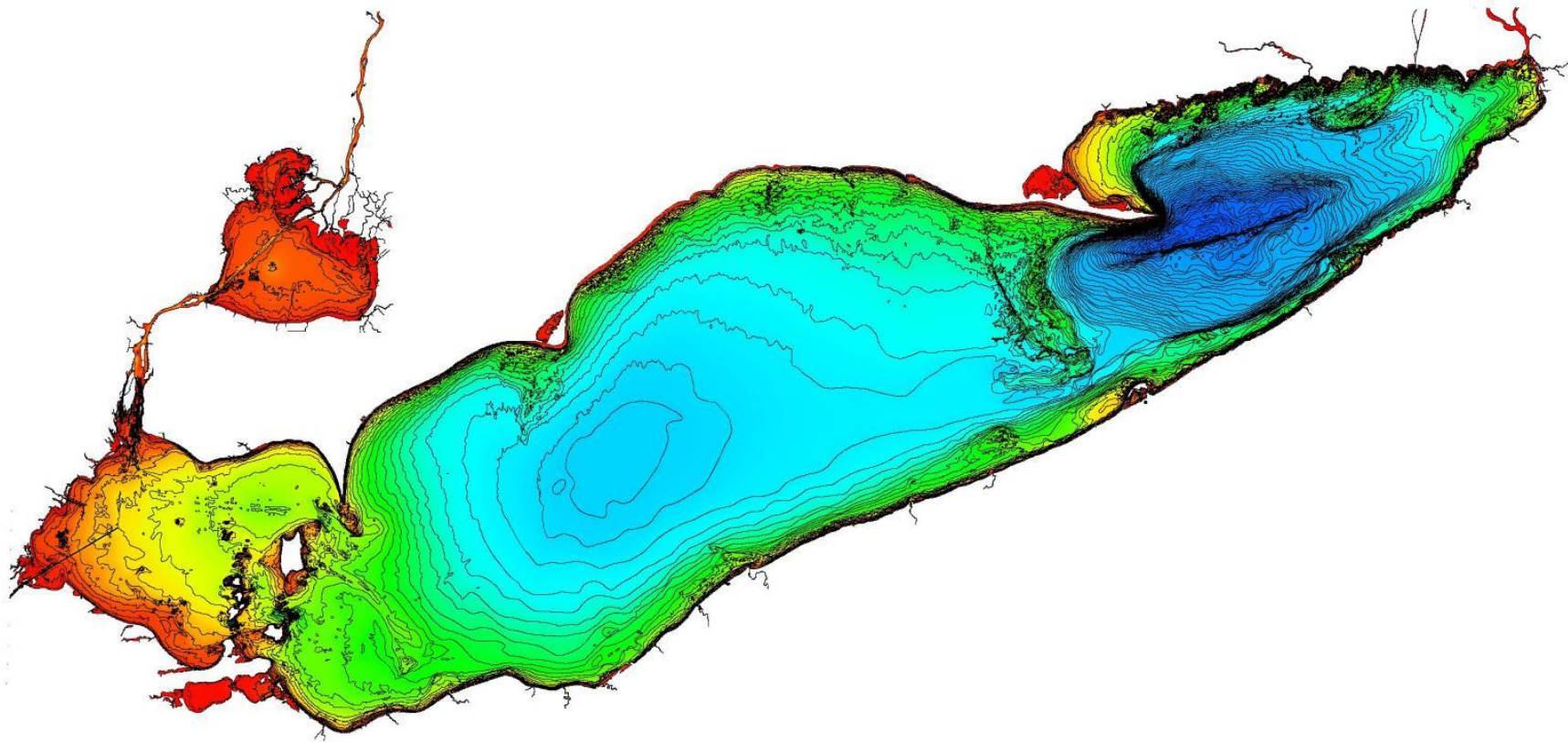
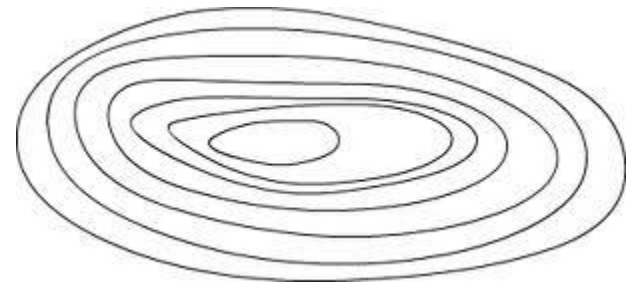
Lake Morphology

- Open lakes: Outlet with a river or flow
- Closed lakes: No outlet

Lake Morphological Parameters

- Maximum depth
- Mean depth
- Length: The longest distance between the shores of lake
- Width
- Area (A): Surface area
- Volume (V): The whole amount of water in lake

Bathymetric map (Lake Erie)







Lake zonation

- Littoral region
- Benthic region
- Profundal region
- Pelagic region

