

8. Parsimoni ve diğer yöntemler

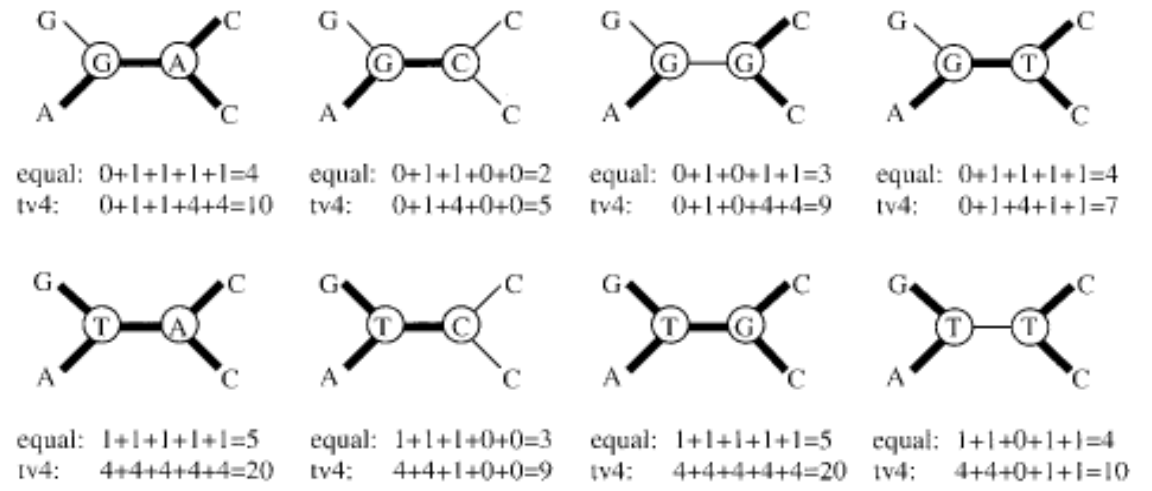
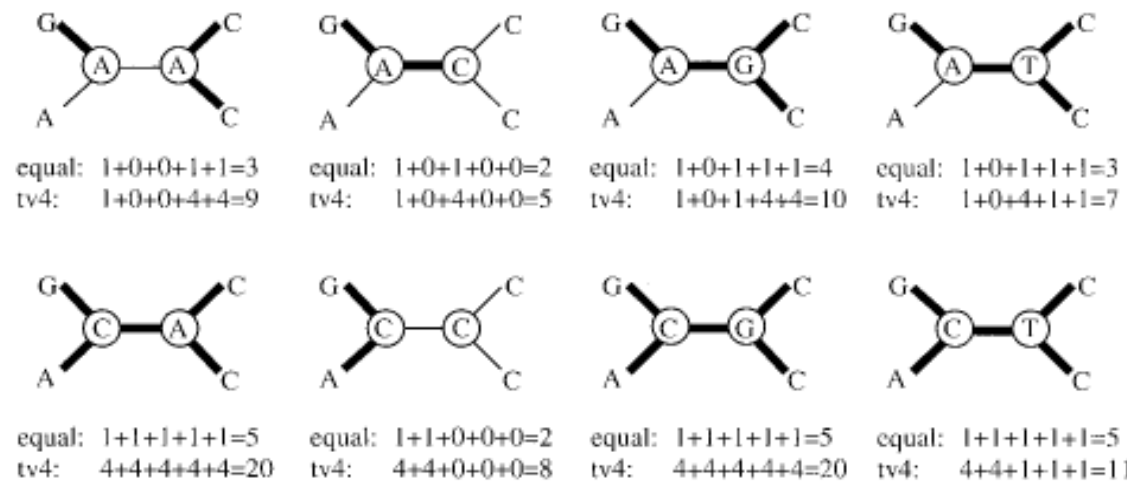
(a)

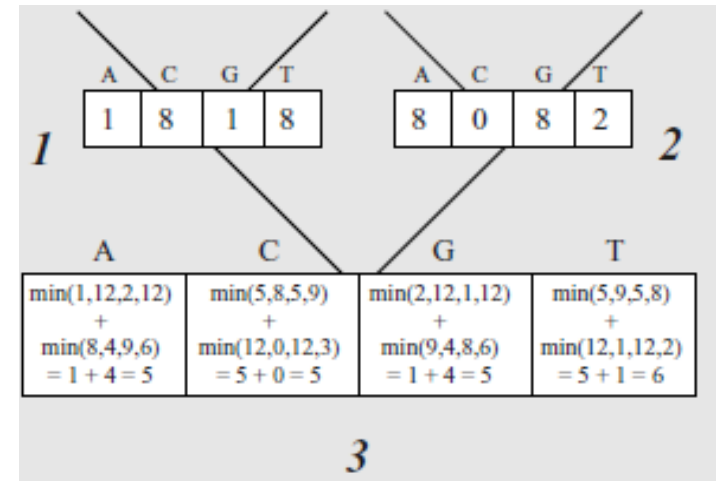
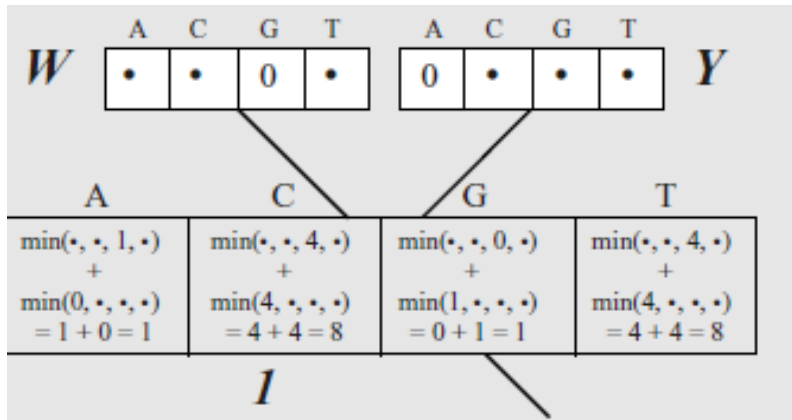
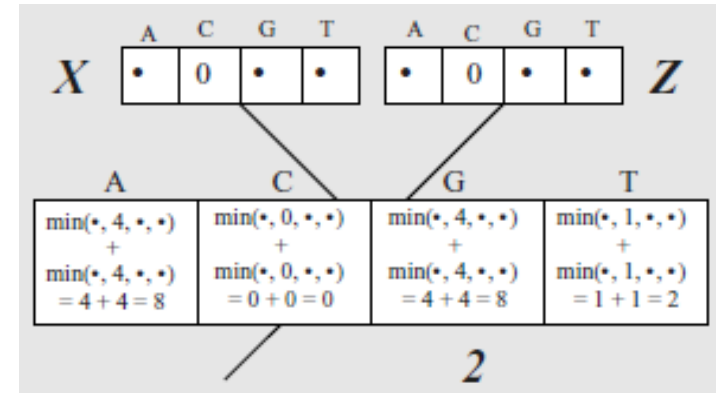
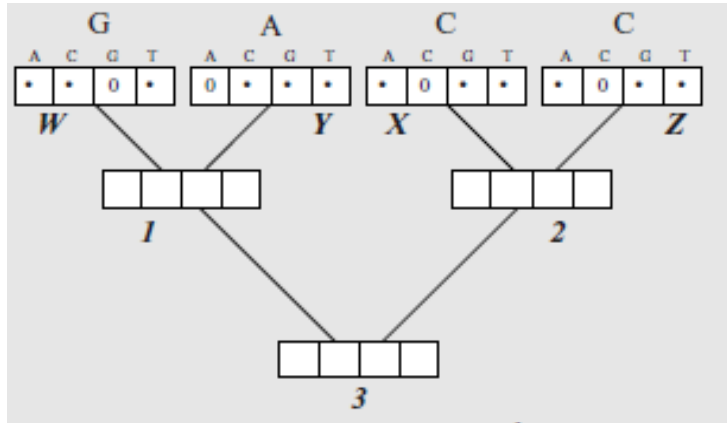
$$\text{equal} = \begin{bmatrix} 0 & 1 & 1 & 1 \\ 1 & 0 & 1 & 1 \\ 1 & 1 & 0 & 1 \\ 1 & 1 & 1 & 0 \end{bmatrix}$$

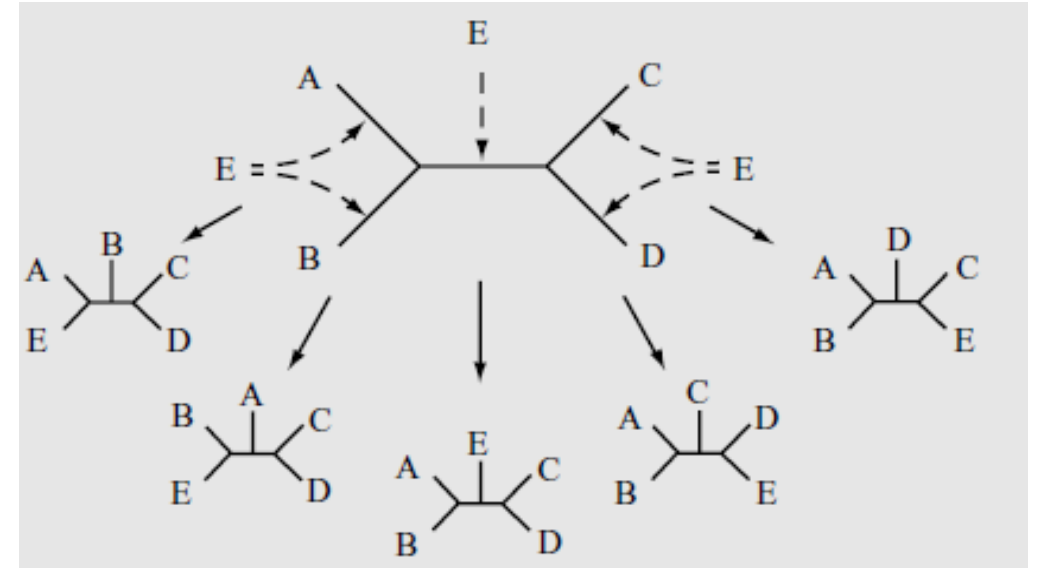
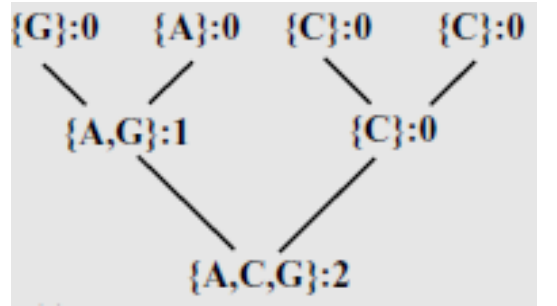
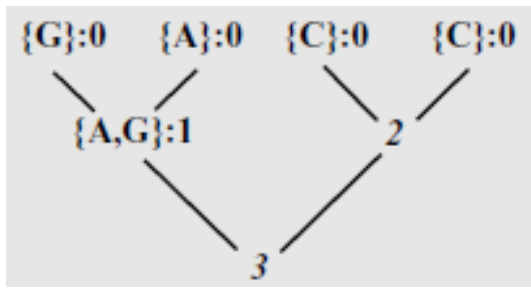
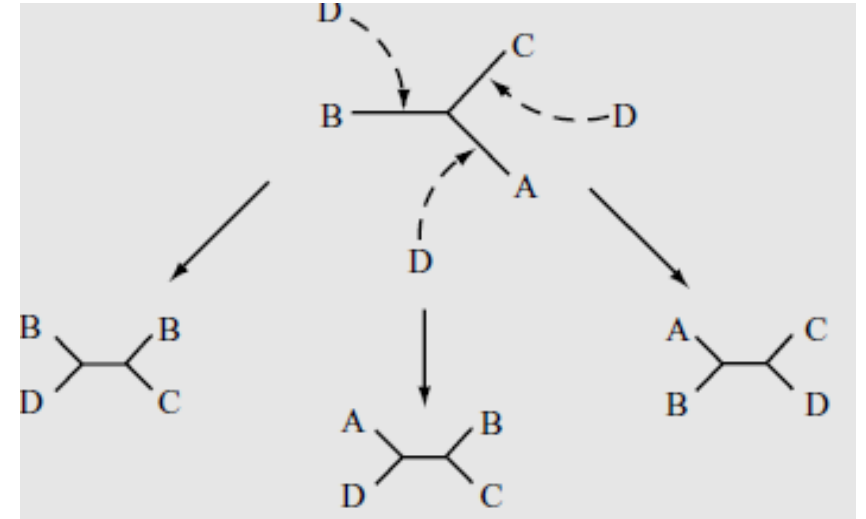
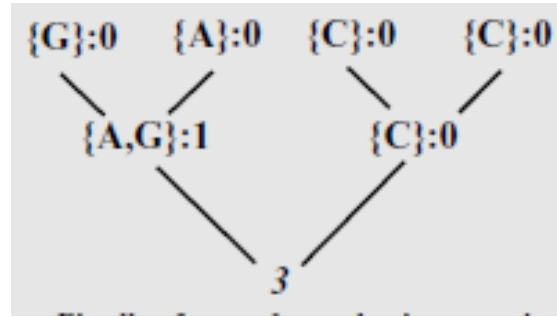
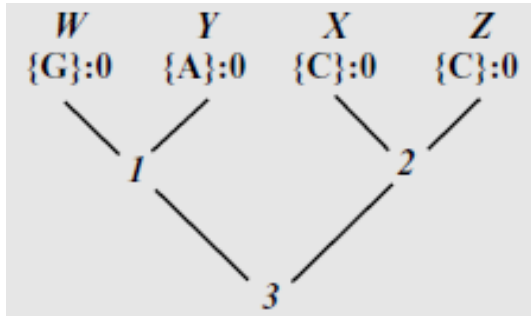
(b)

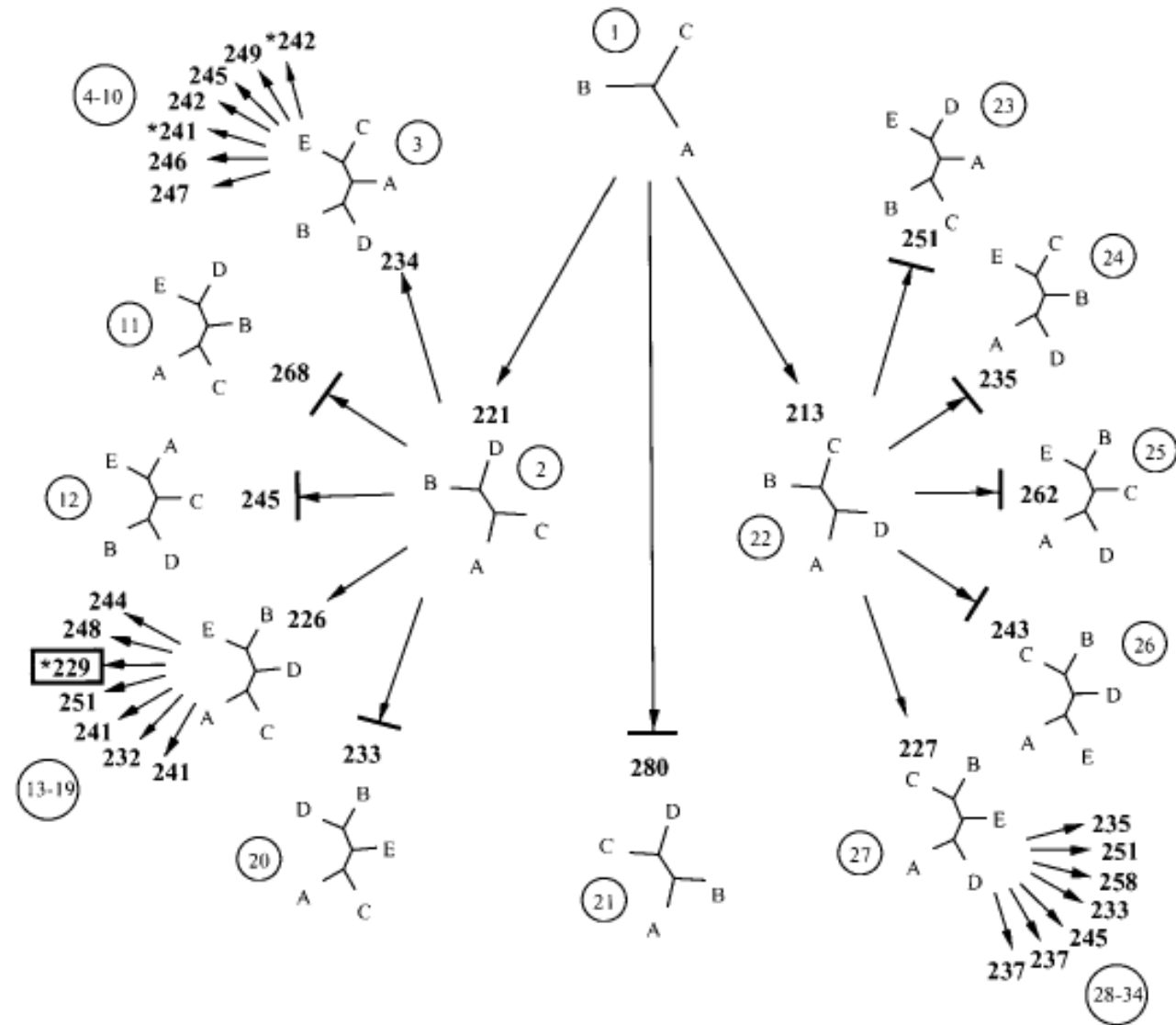
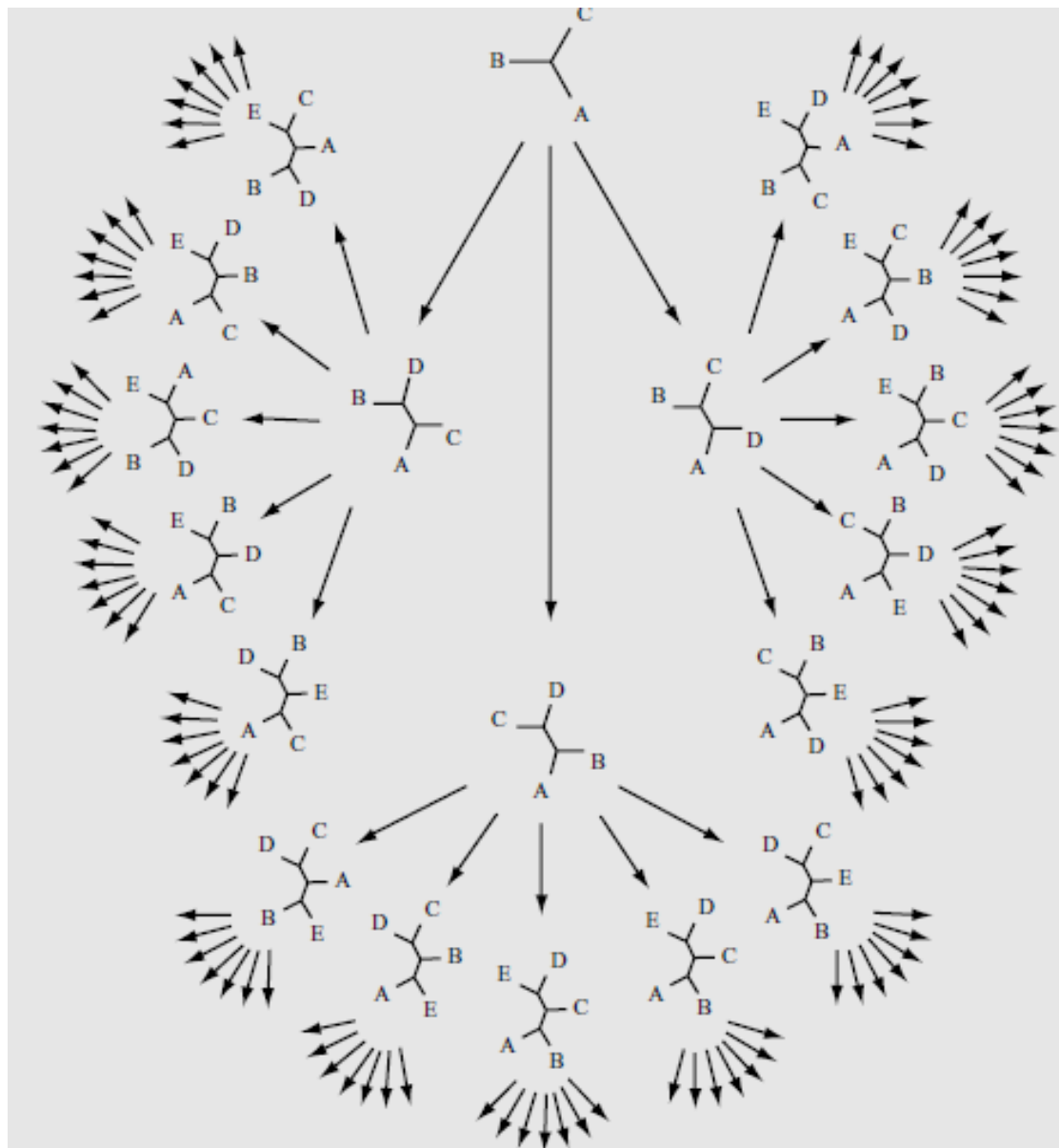
$$\text{tv4} = \begin{bmatrix} 0 & 4 & 1 & 4 \\ 4 & 0 & 4 & 1 \\ 1 & 4 & 0 & 4 \\ 4 & 1 & 4 & 0 \end{bmatrix}$$

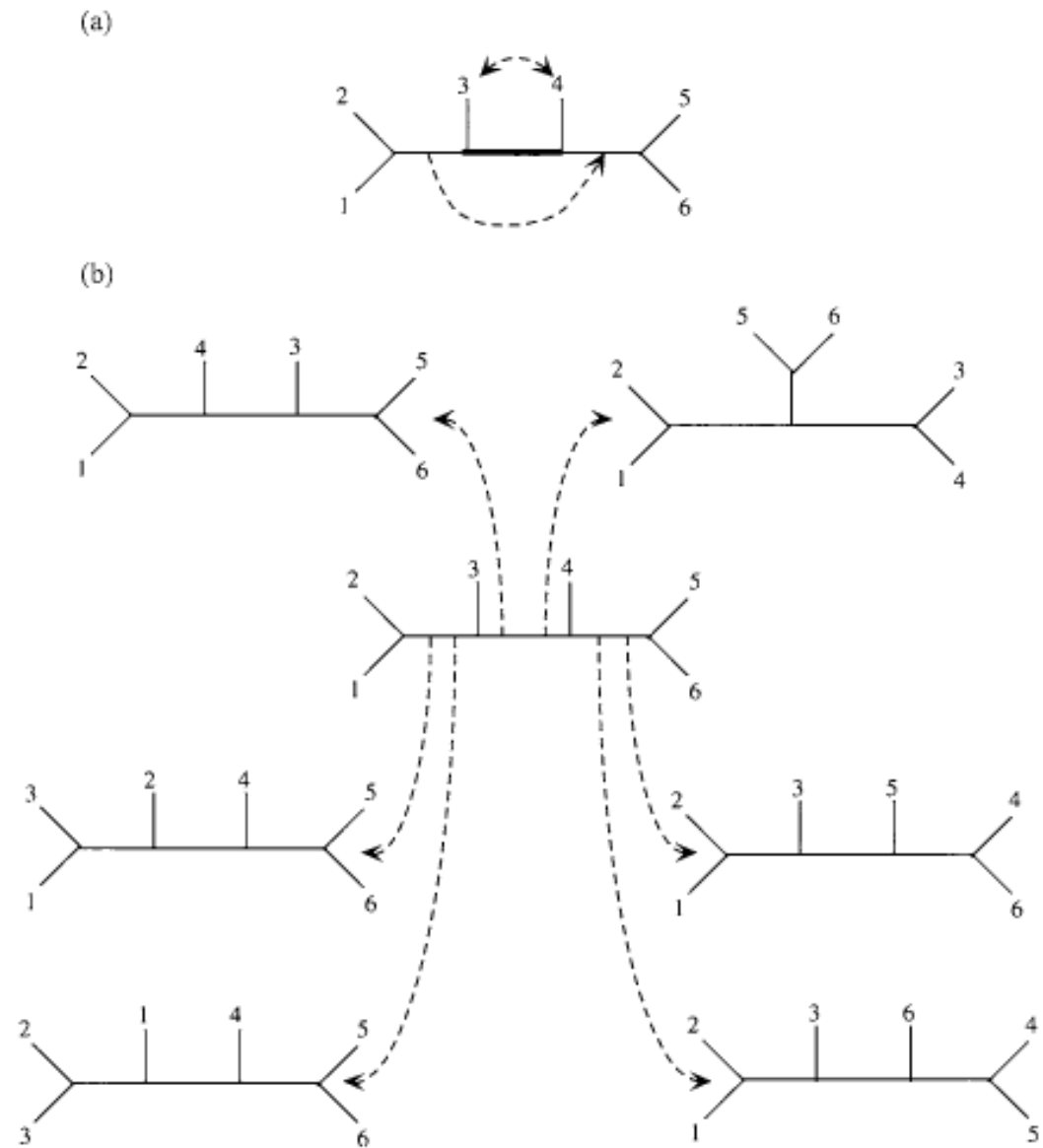
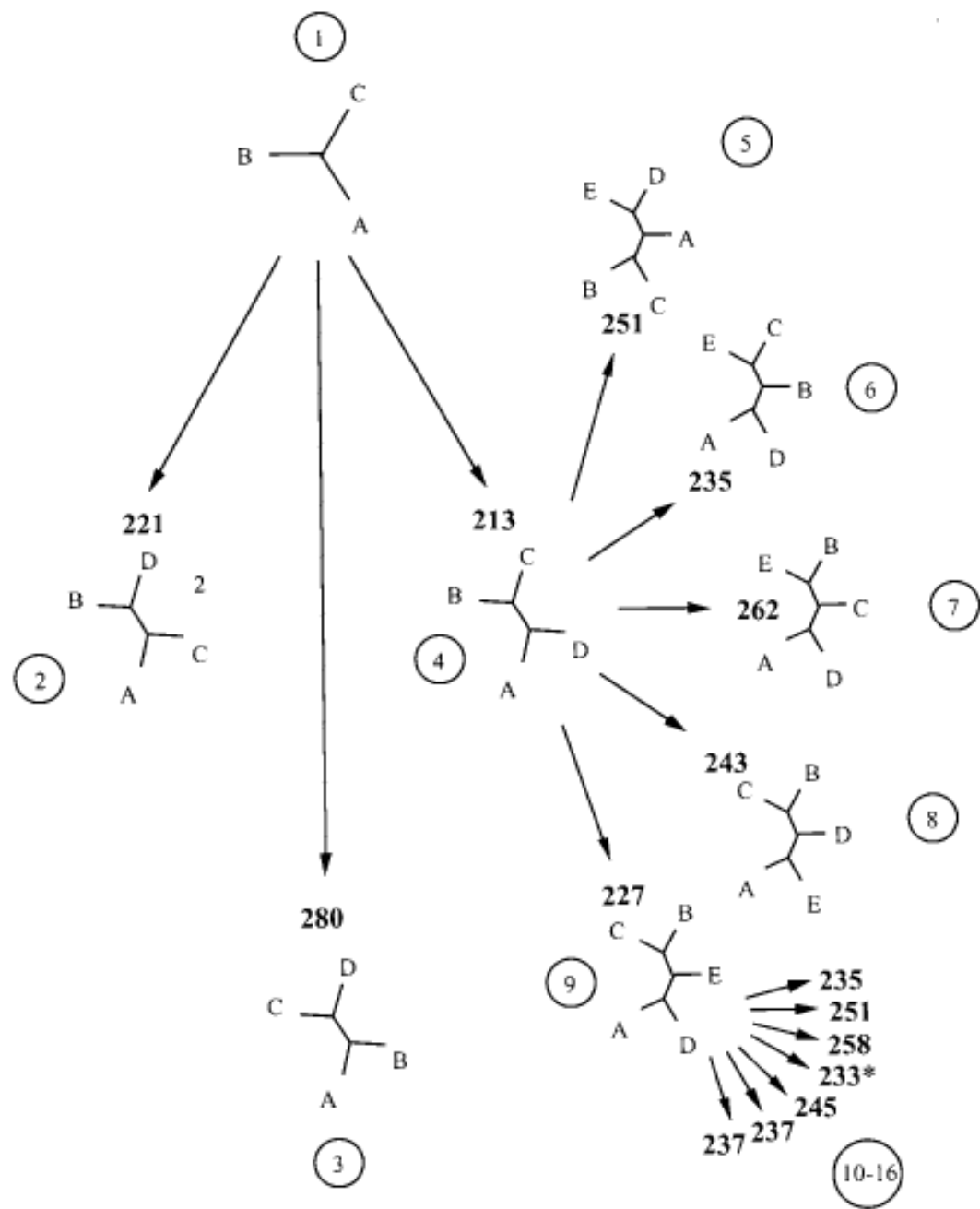
(c)

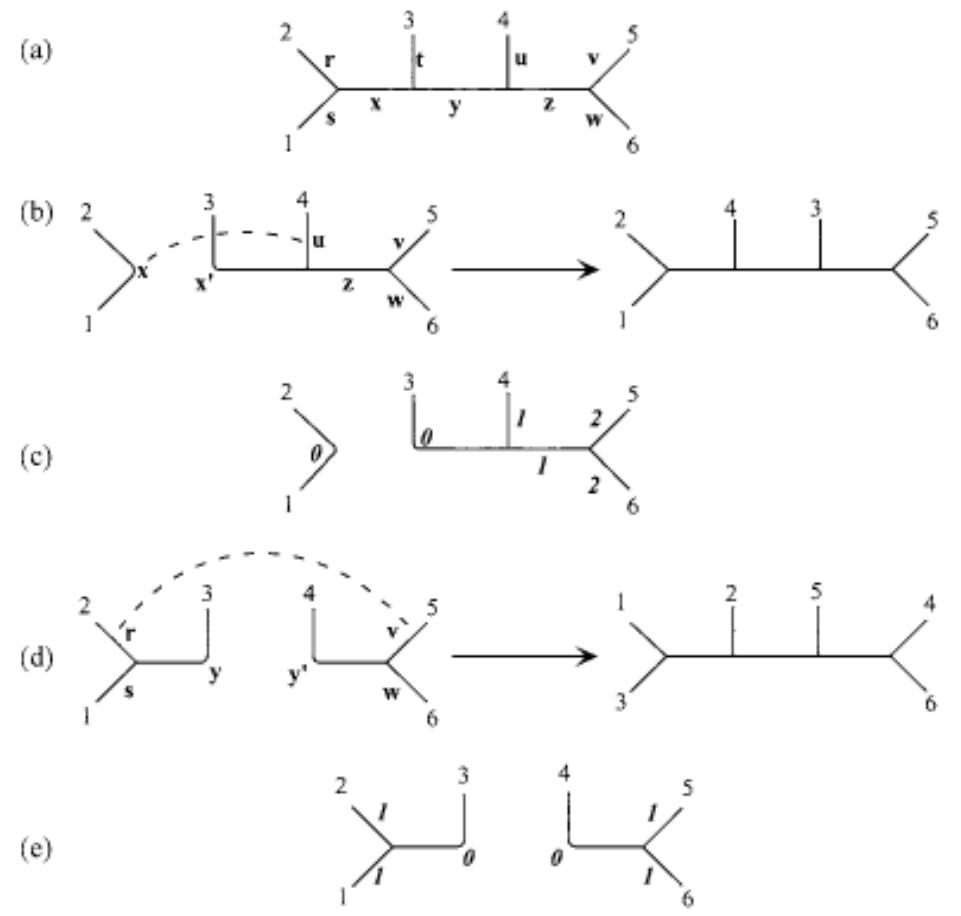
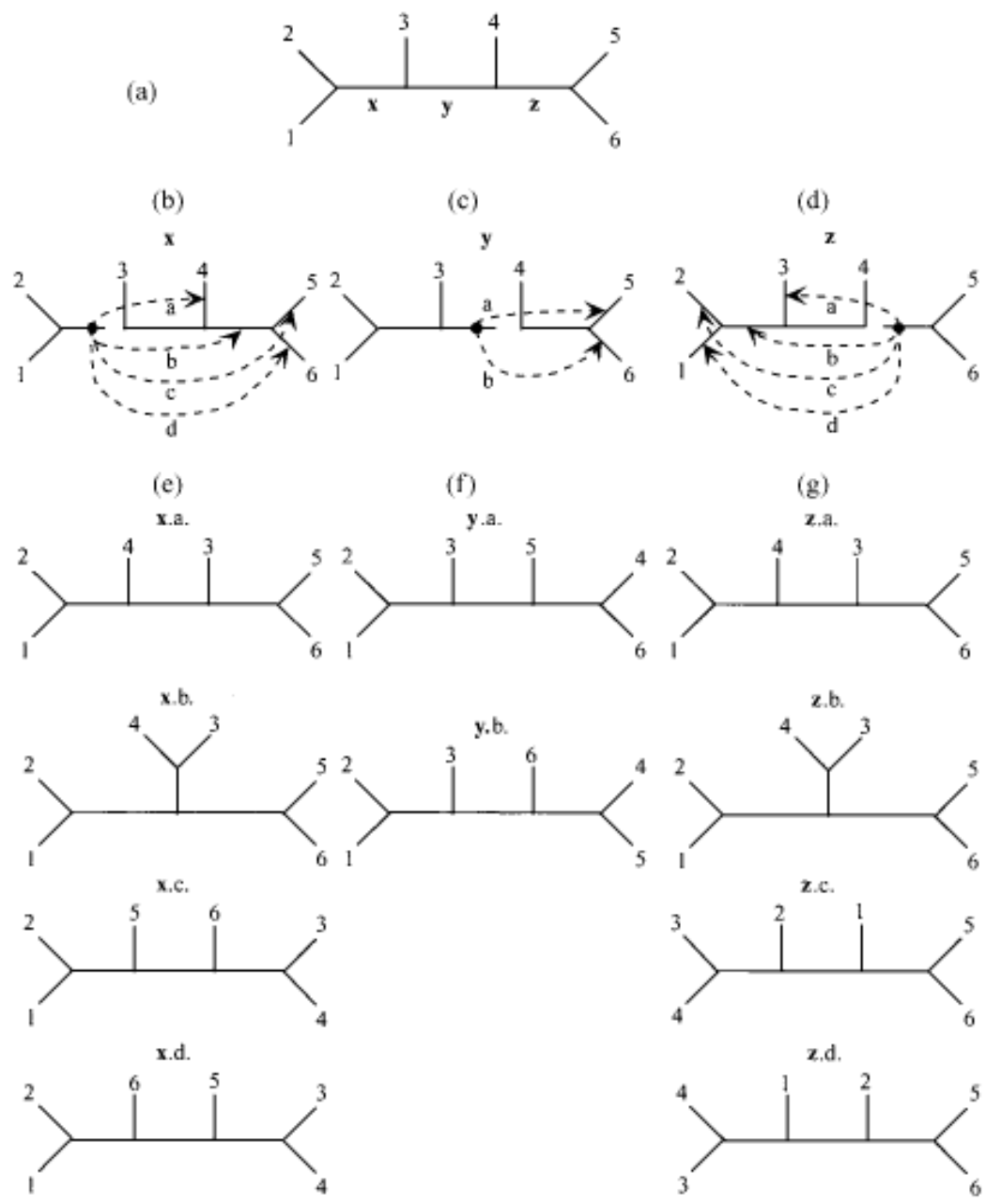


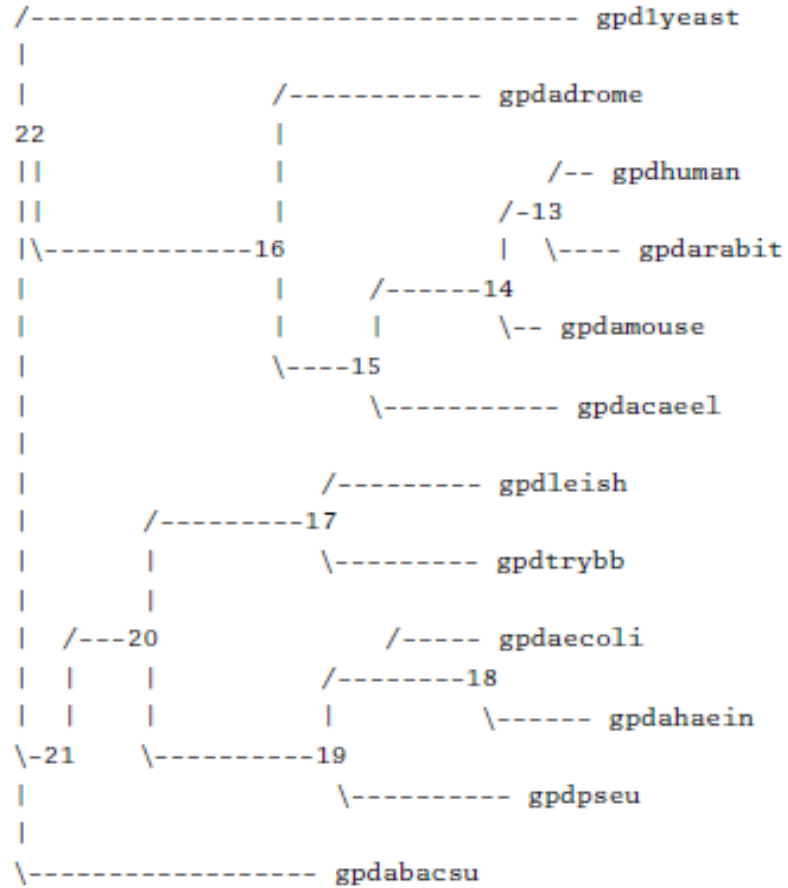








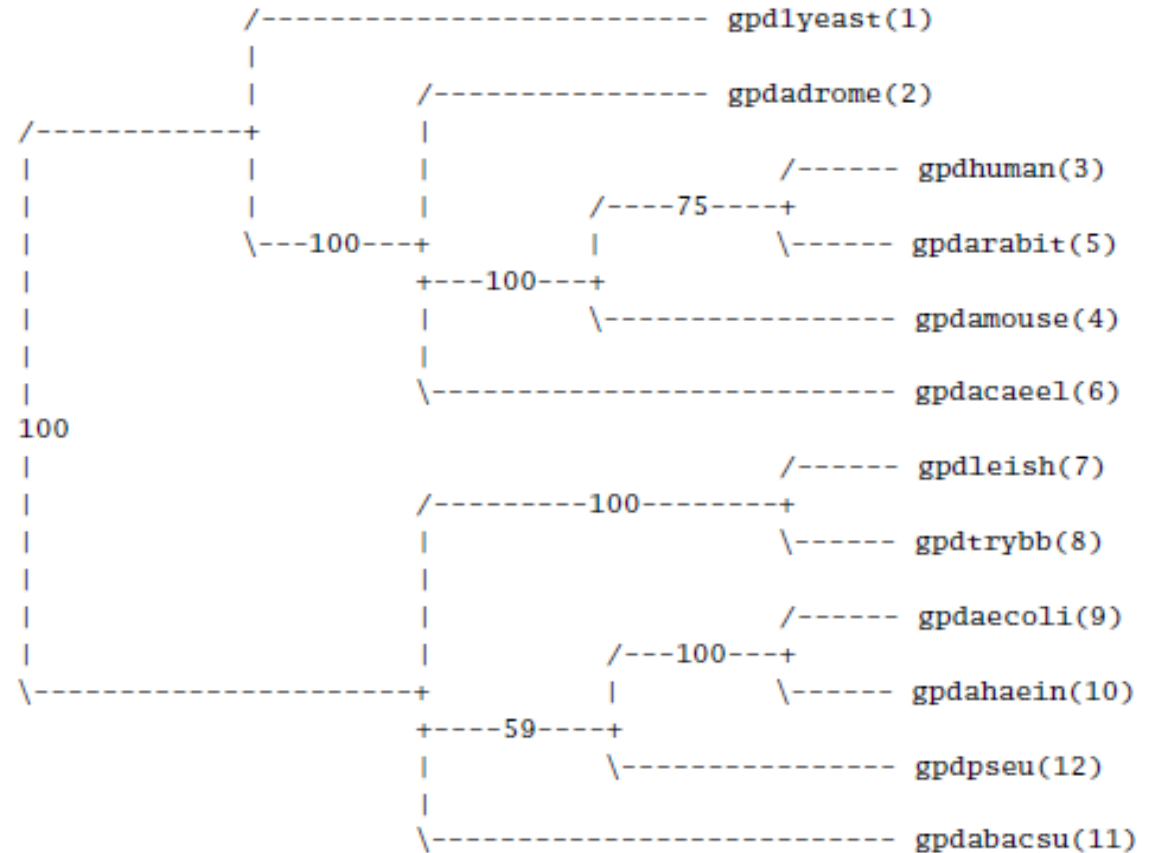




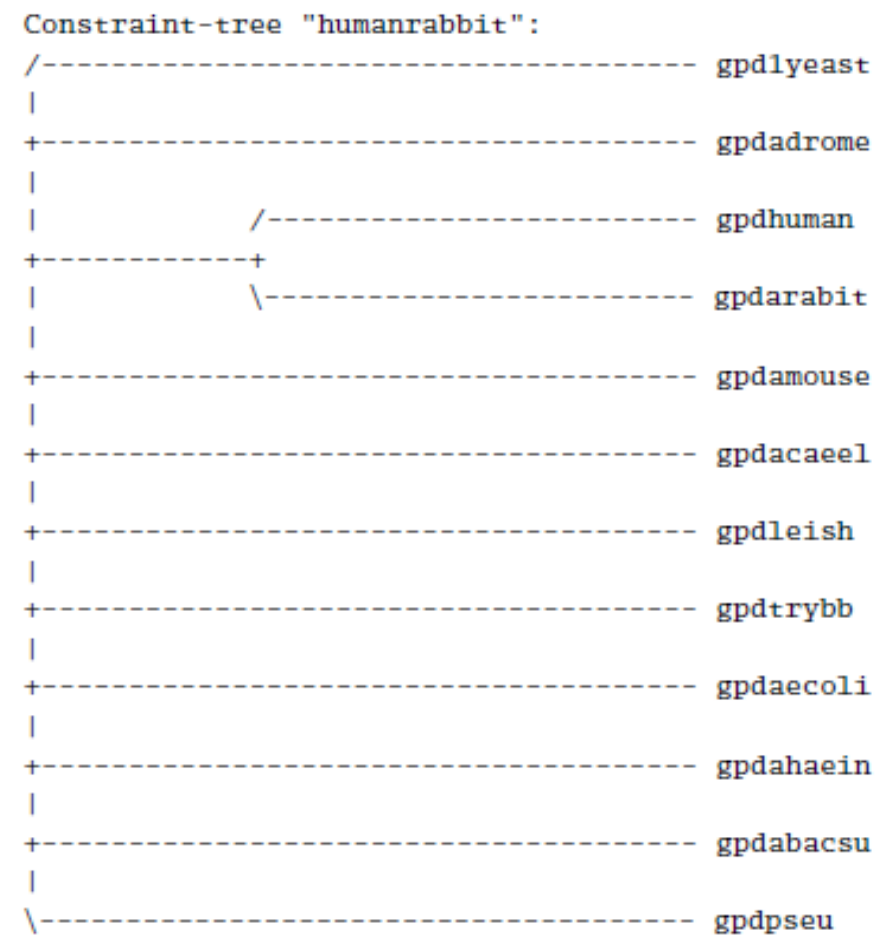
Character diagnostics:

Character	Range	Min steps	Tree steps	Max steps	CI	RI	RC	HI	G-fit
1	2	2	2	6	1.000	1.000	1.000	0.000	1.000
3	5	5	5	6	1.000	1.000	1.000	0.000	1.000
.
.
.
233	6	6	6	7	1.000	1.000	1.000	0.000	1.000
234	1	1	2	2	0.500	0.000	0.000	0.500	0.750

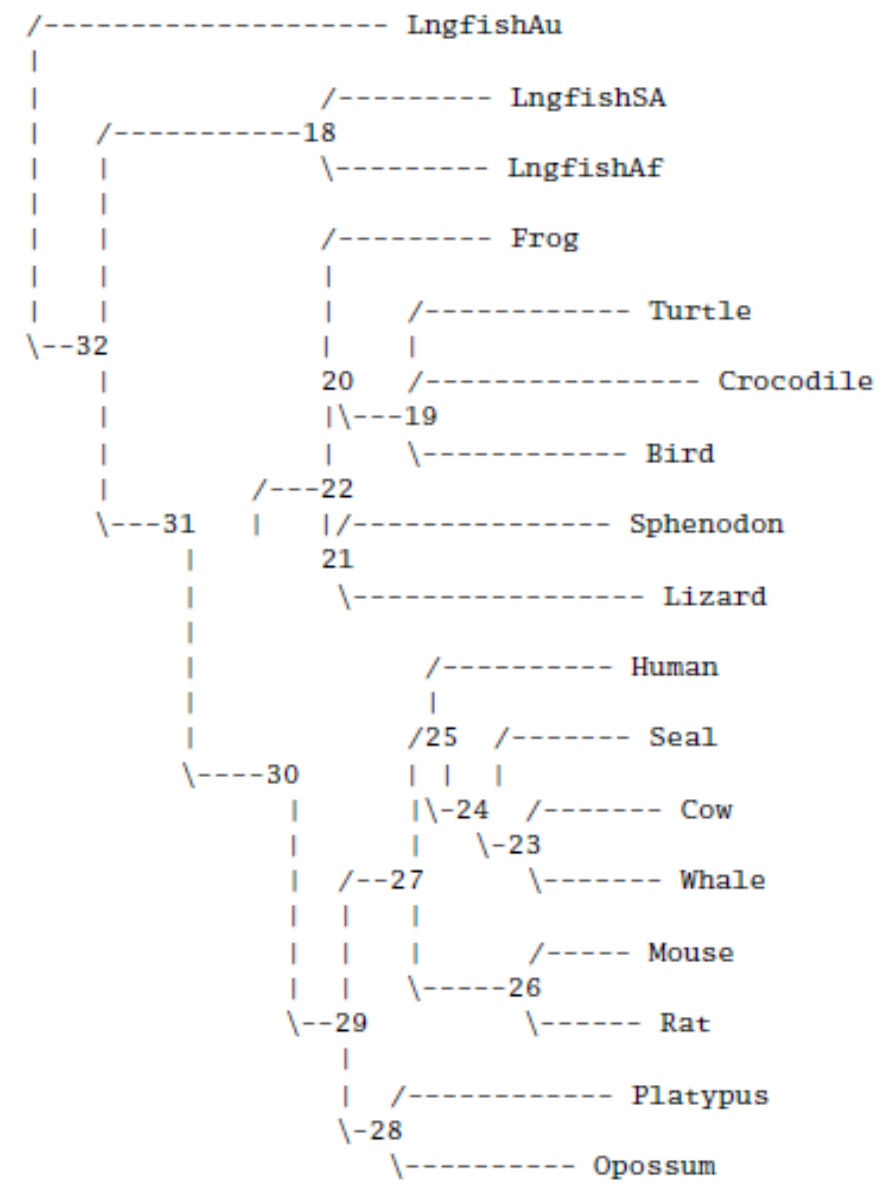
(24 constant characters not shown)



123456789012	Freq	%
.....**..	1000.00	100.0%
..***.....	1000.00	100.0%
.....*****	1000.00	100.0%
.....**....	999.67	100.0%
..*****....	997.07	99.7%
..*.*.....	747.89	74.8%
.....**.*	589.53	59.0%
..*..*.....	498.14	49.8%
.....*****	476.07	47.6%
..****.....	407.86	40.8%
.....****	313.48	31.3%
.....***.	230.47	23.0%
..**.....	177.42	17.7%
.....*****	135.95	13.6%
..****.....	91.80	9.2%
.....**	77.38	7.7%
...**.....	74.70	7.5%
.....*****	67.33	6.7%
.....**...*	59.53	6.0%



Minimum evolution score = 2.47415



Branch lengths and linkages for tree #1 (unrooted)

Node	Connected to node	Branch length	Standard error	--- L.R. test --- lnL diff	P*
L20571(1)	26	0.95536	0.06838	399.948	<0.001
15	26	0.10463	0.02367	8.449	<0.001
AF103818 (2)	15	0.33927	0.02887	137.486	<0.001
X52154 (3)	15	0.33452	0.02858	125.842	<0.001
25	26	0.21406	0.02630	32.721	<0.001
U09127 (4)	25	0.07713	0.00837	46.112	<0.001
24	25	0.02213	0.00682	4.197	0.004
16	24	0.06190	0.00724	110.645	<0.001
U27426 (5)	16	0.06438	0.00663	132.276	<0.001
U27445 (6)	16	0.04666	0.00582	86.951	<0.001
23	24	0.01643	0.00438	14.143	<0.001
17	23	0.07067	0.00754	157.899	<0.001
AF067158 (7)	17	0.05477	0.00603	126.407	<0.001
U09126 (8)	17	0.04146	0.00536	73.886	<0.001
22	23	0.03517	0.00583	47.726	<0.001
18	22	0.04925	0.00614	99.613	<0.001
U27399 (9)	18	0.04582	0.00557	99.612	<0.001
U43386 (10)	18	0.05442	0.00601	132.606	<0.001
21	22	0.03817	0.00549	69.776	<0.001
20	21	0.01060	0.00319	11.560	<0.001
19	20	0.00639	0.00237	8.840	<0.001
L02317 (11)	19	0.03638	0.00456	136.741	<0.001
AF042106 (14)	19	0.04899	0.00529	199.615	<0.001
AF025763 (12)	20	0.04503	0.00512	190.207	<0.001
U08443 (13)	21	0.04405	0.00519	138.658	<0.001
Sum		2.81762			