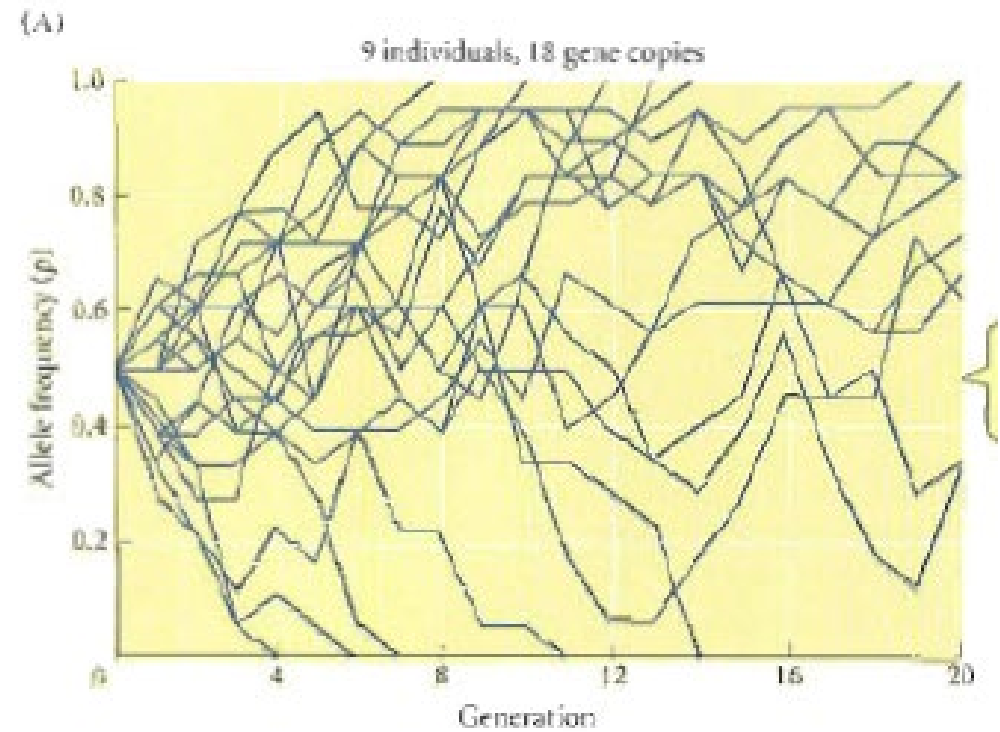
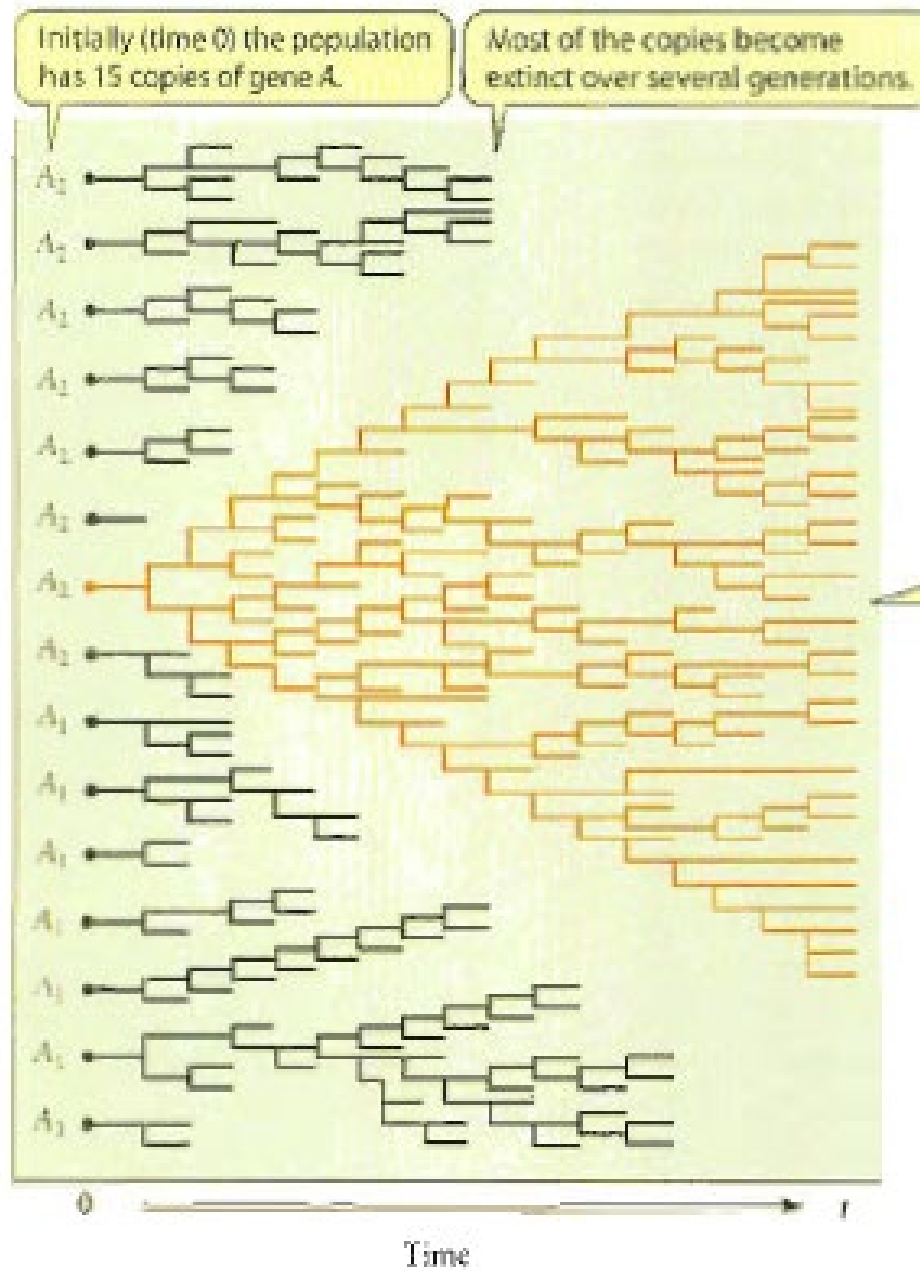
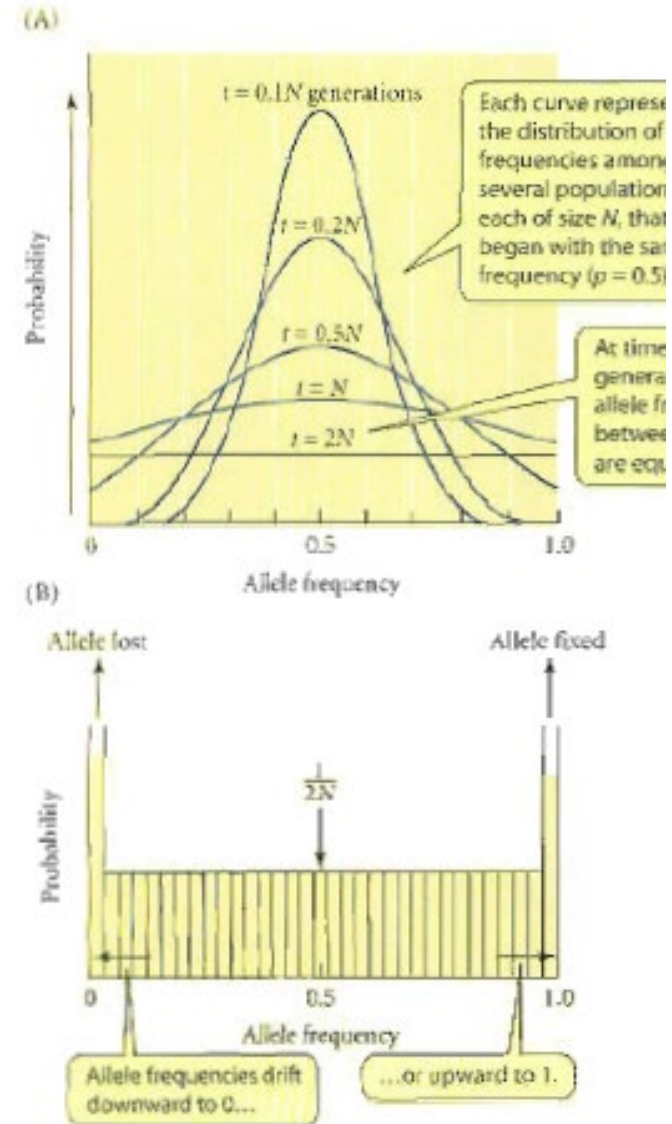
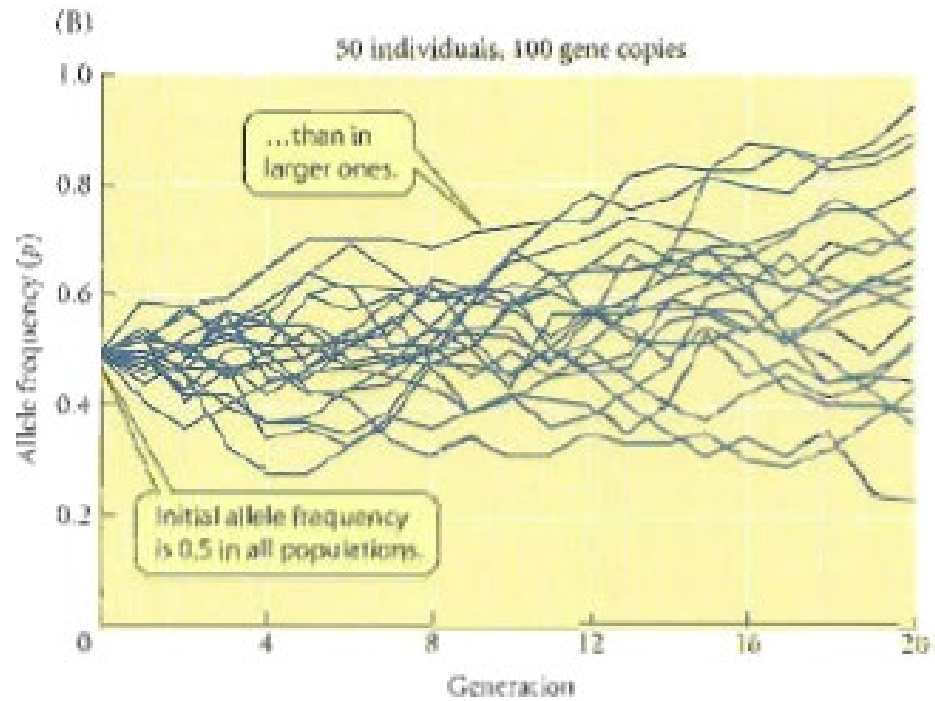
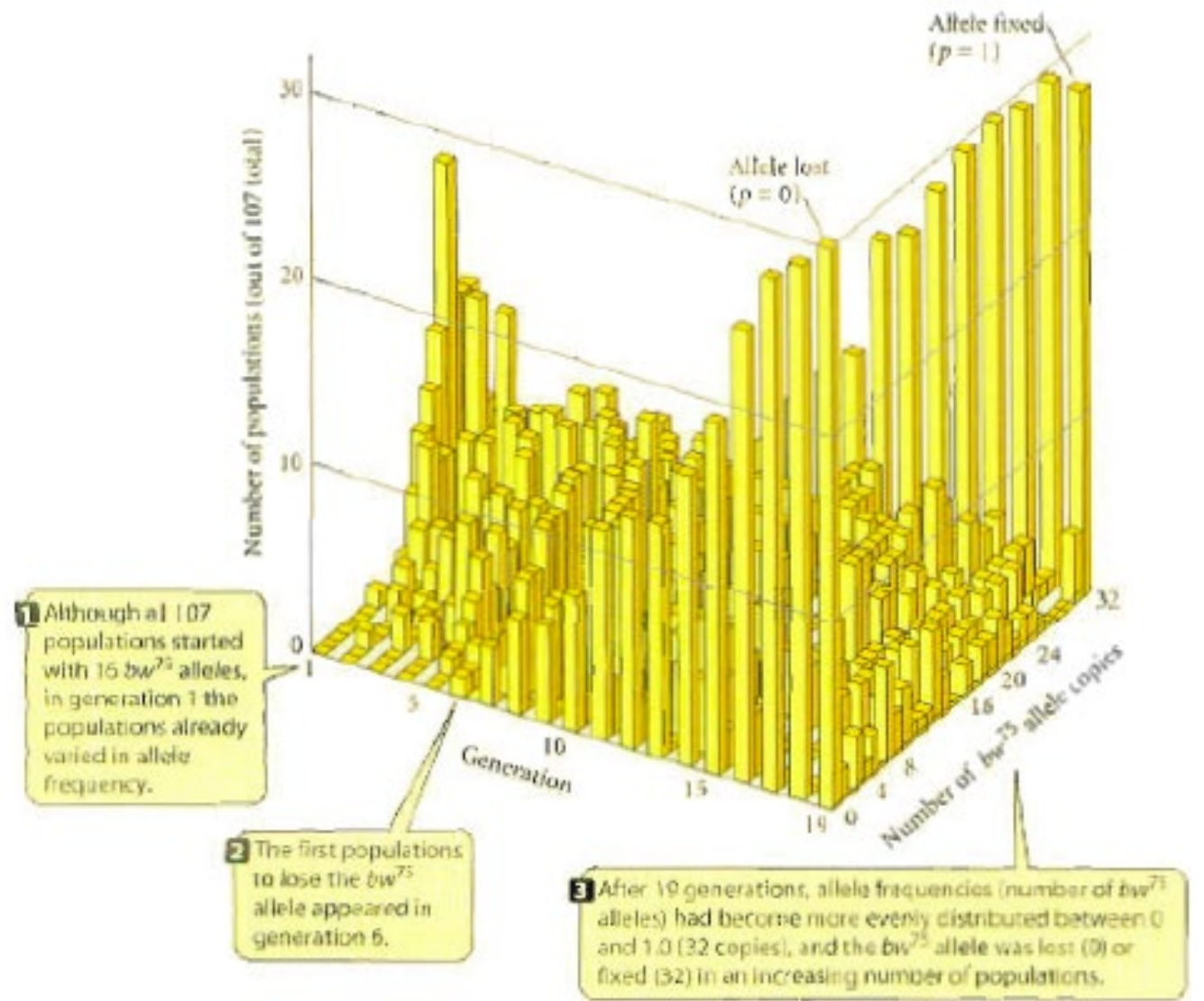
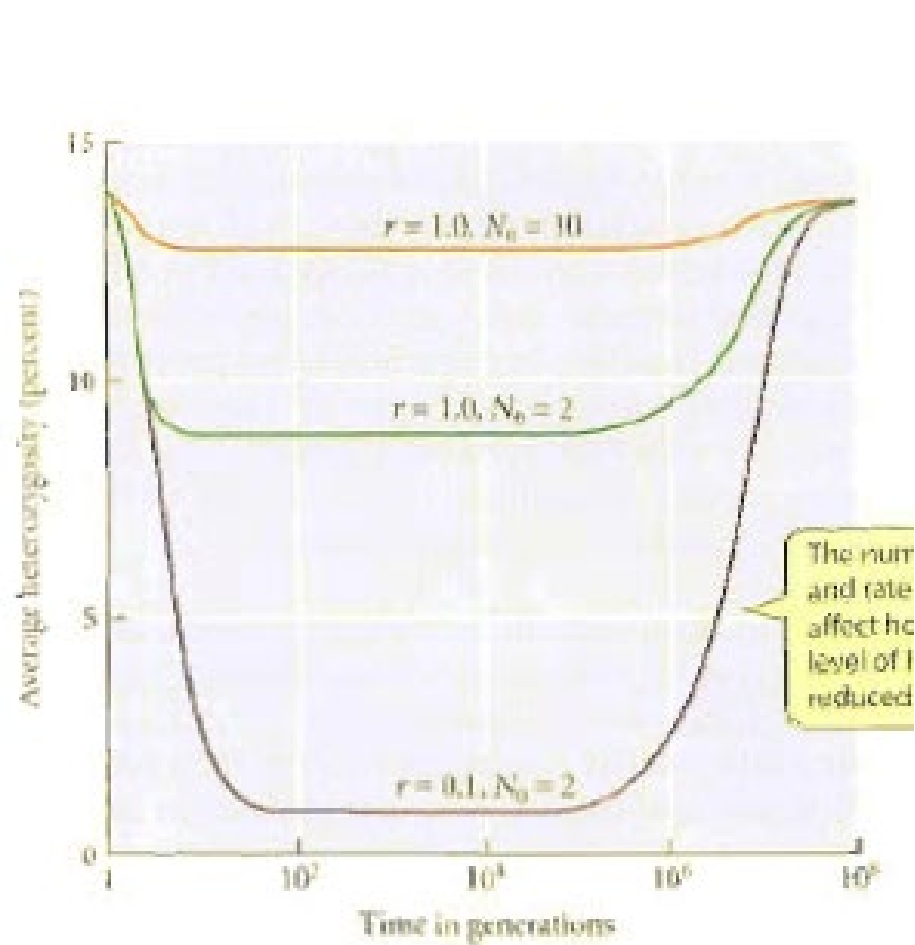


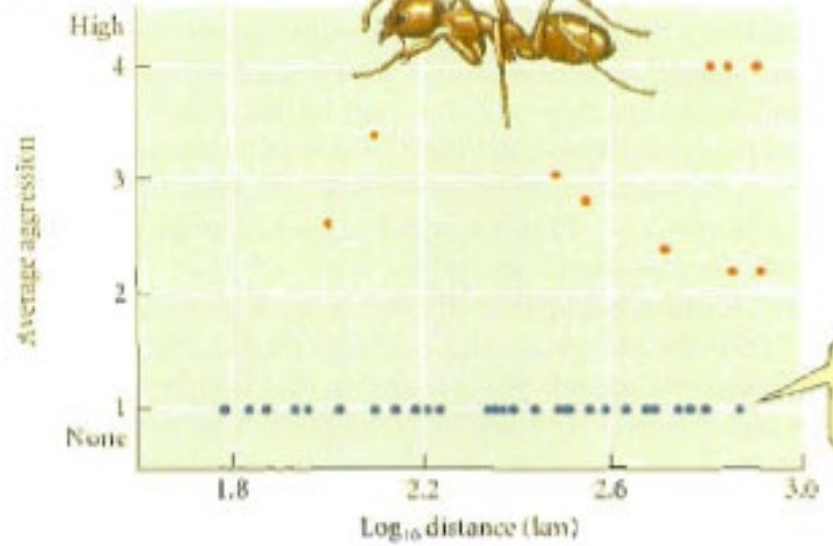
10. Genetik Sürüklenme



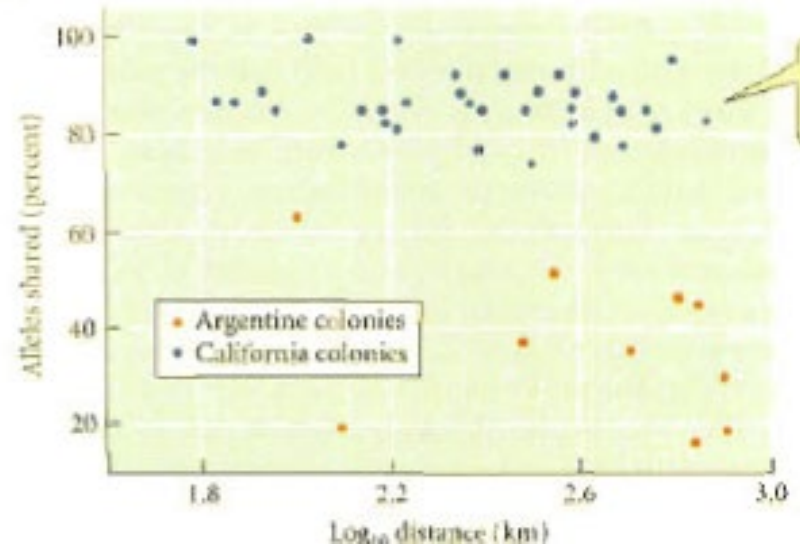




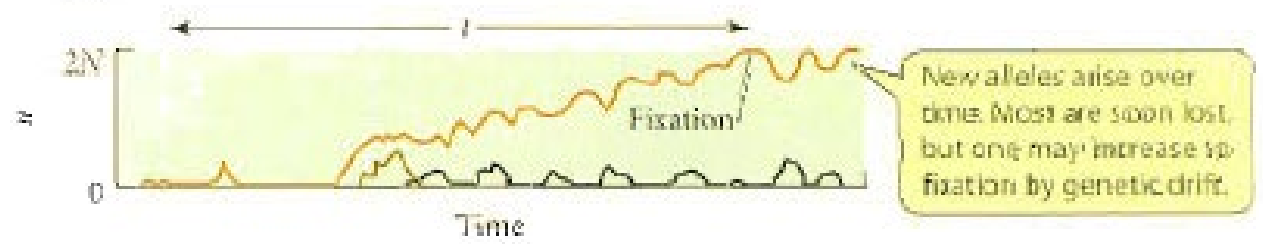
(A) Intraspecific aggression



(B) Genetic similarity



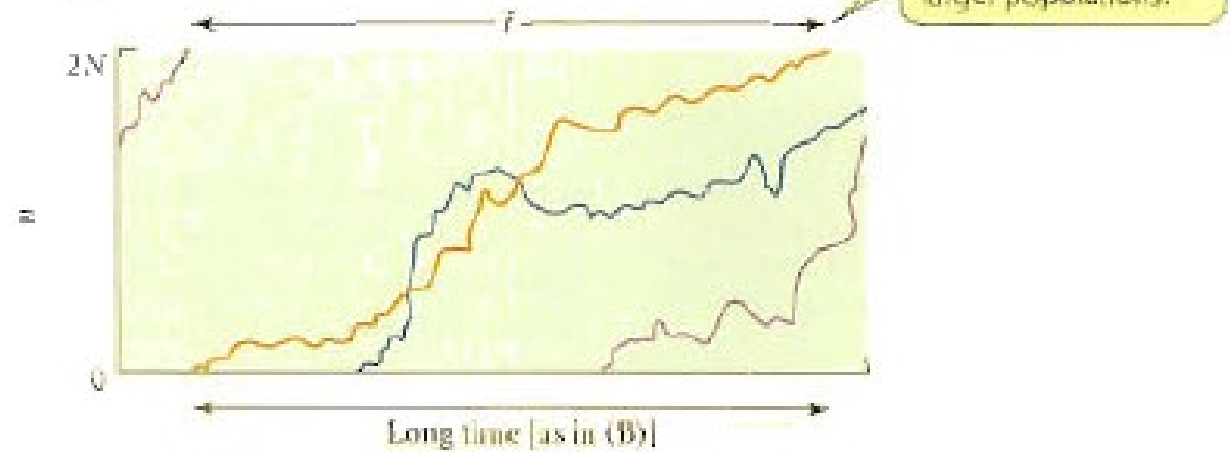
(A)

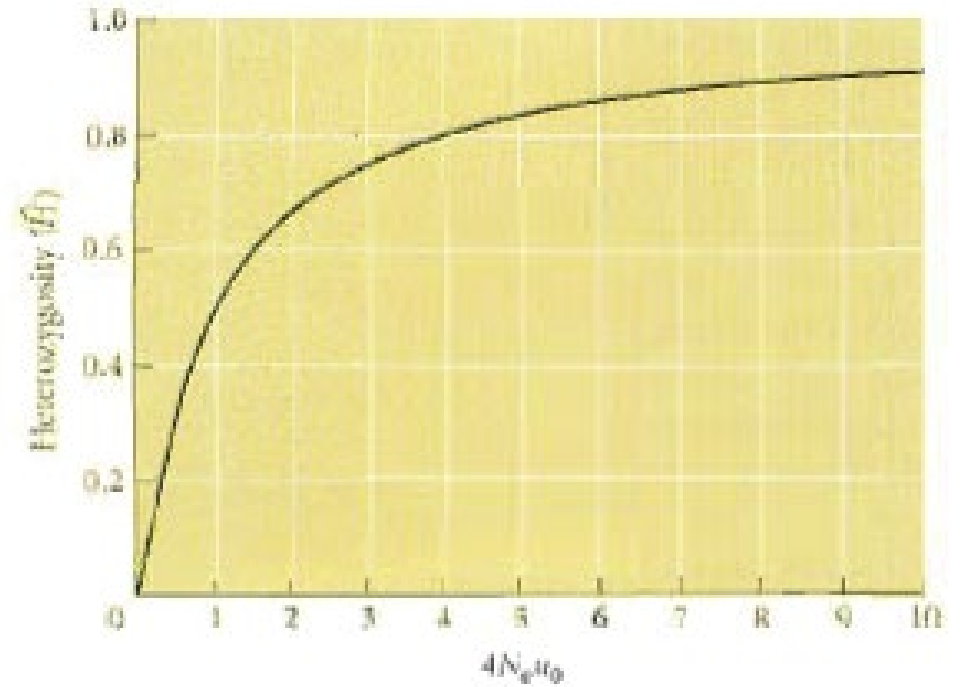
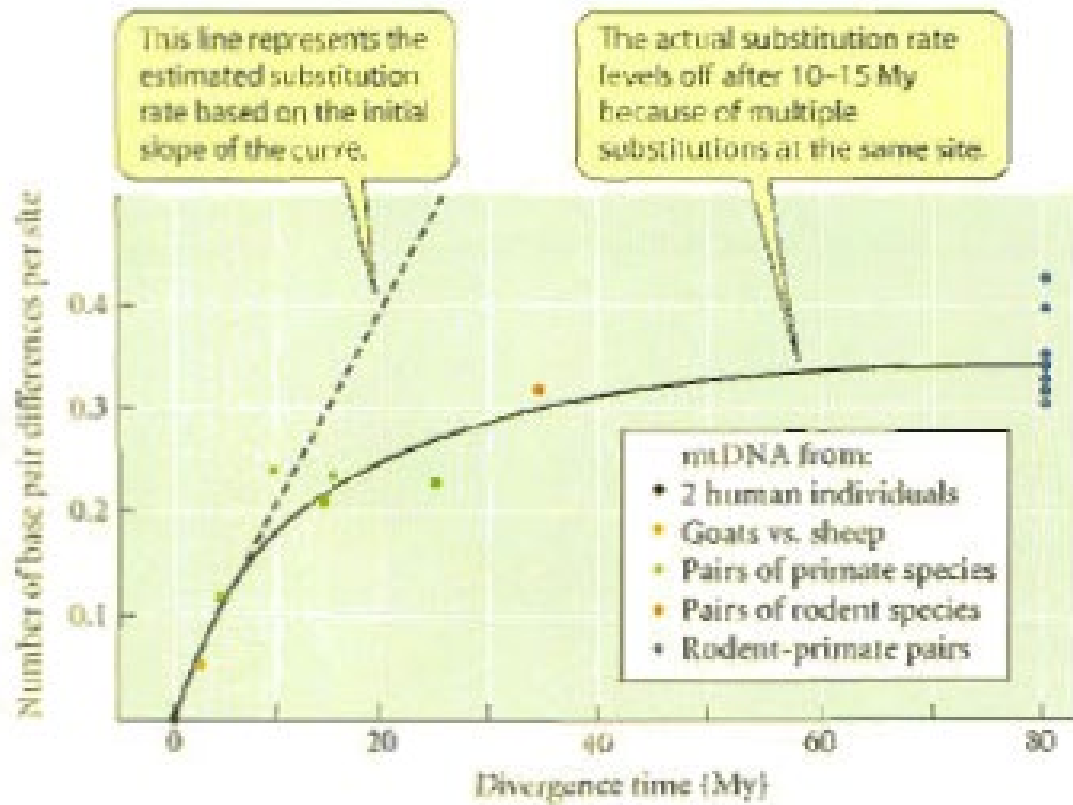


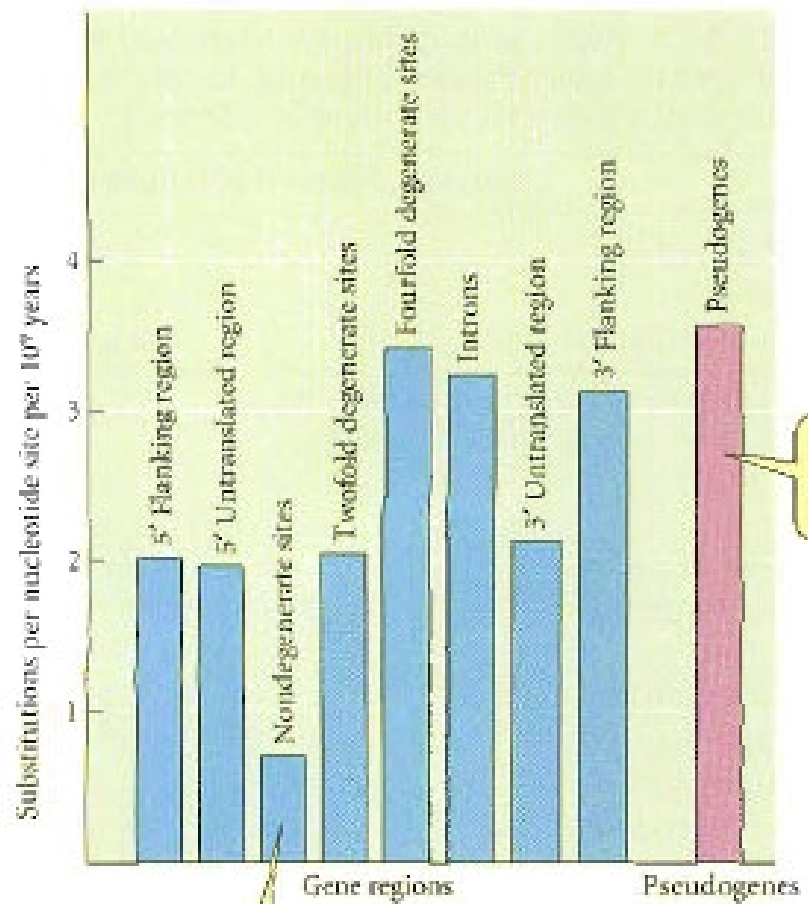
(B)



(C)

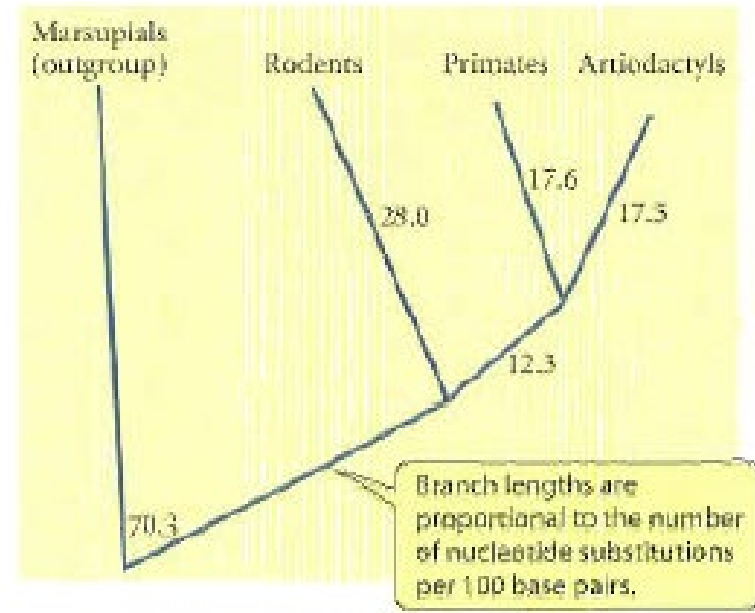






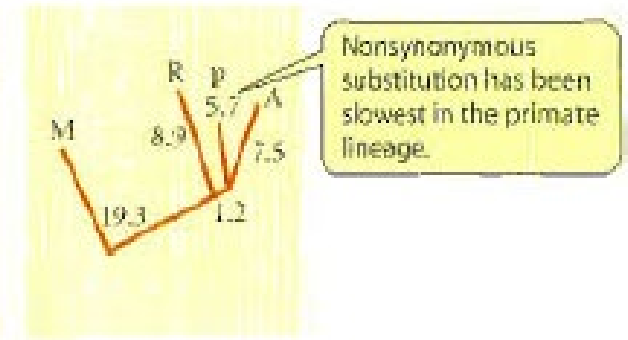
Nucleotide substitution rates are lowest at nondegenerate nucleotide positions, in which any mutation alters the amino acid specified.

(A) Synonymous substitutions

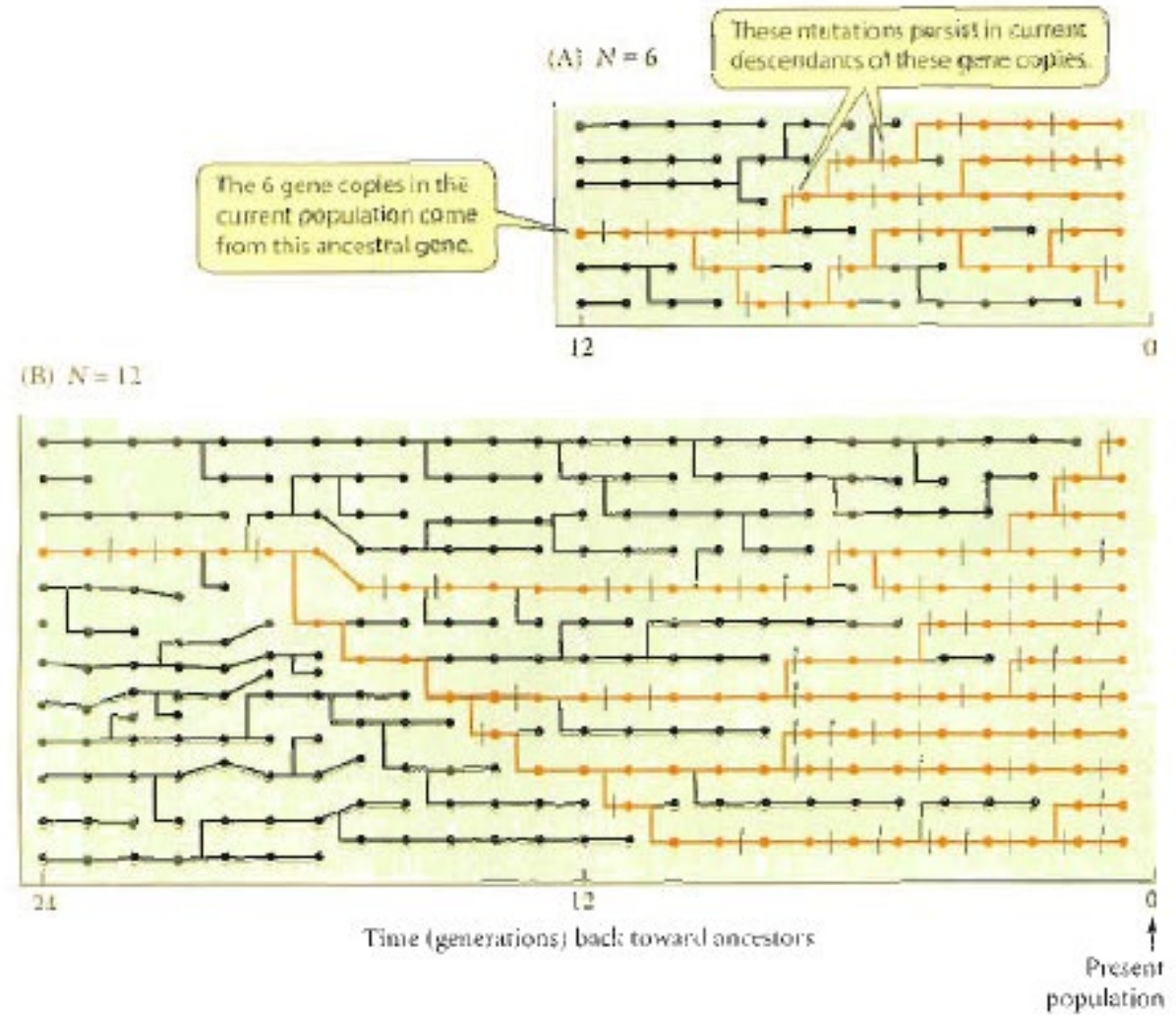
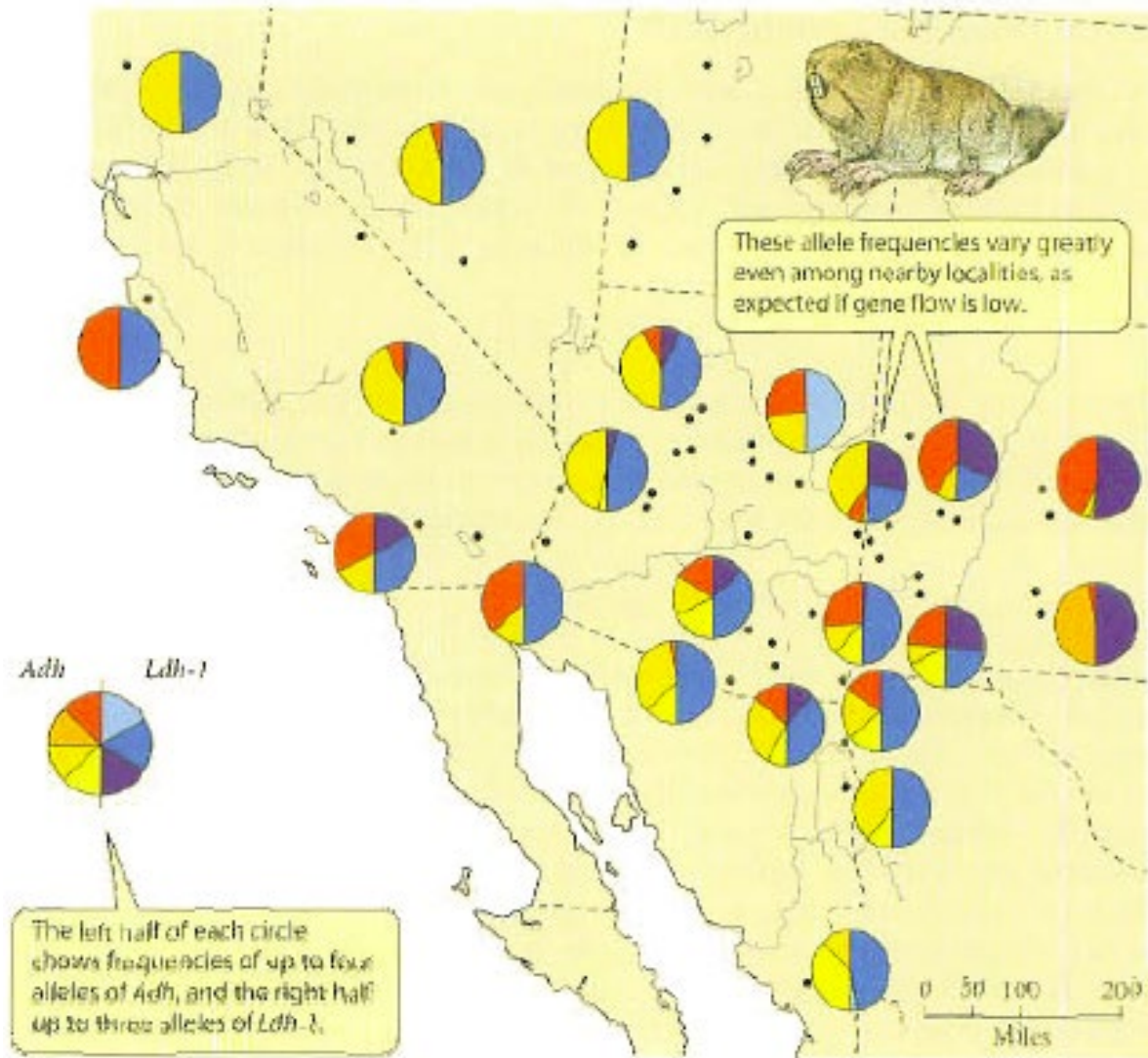


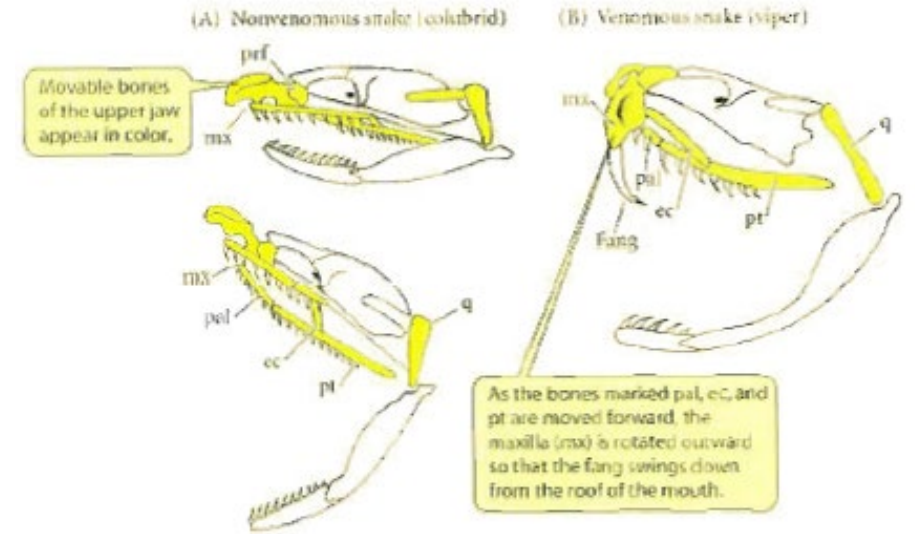
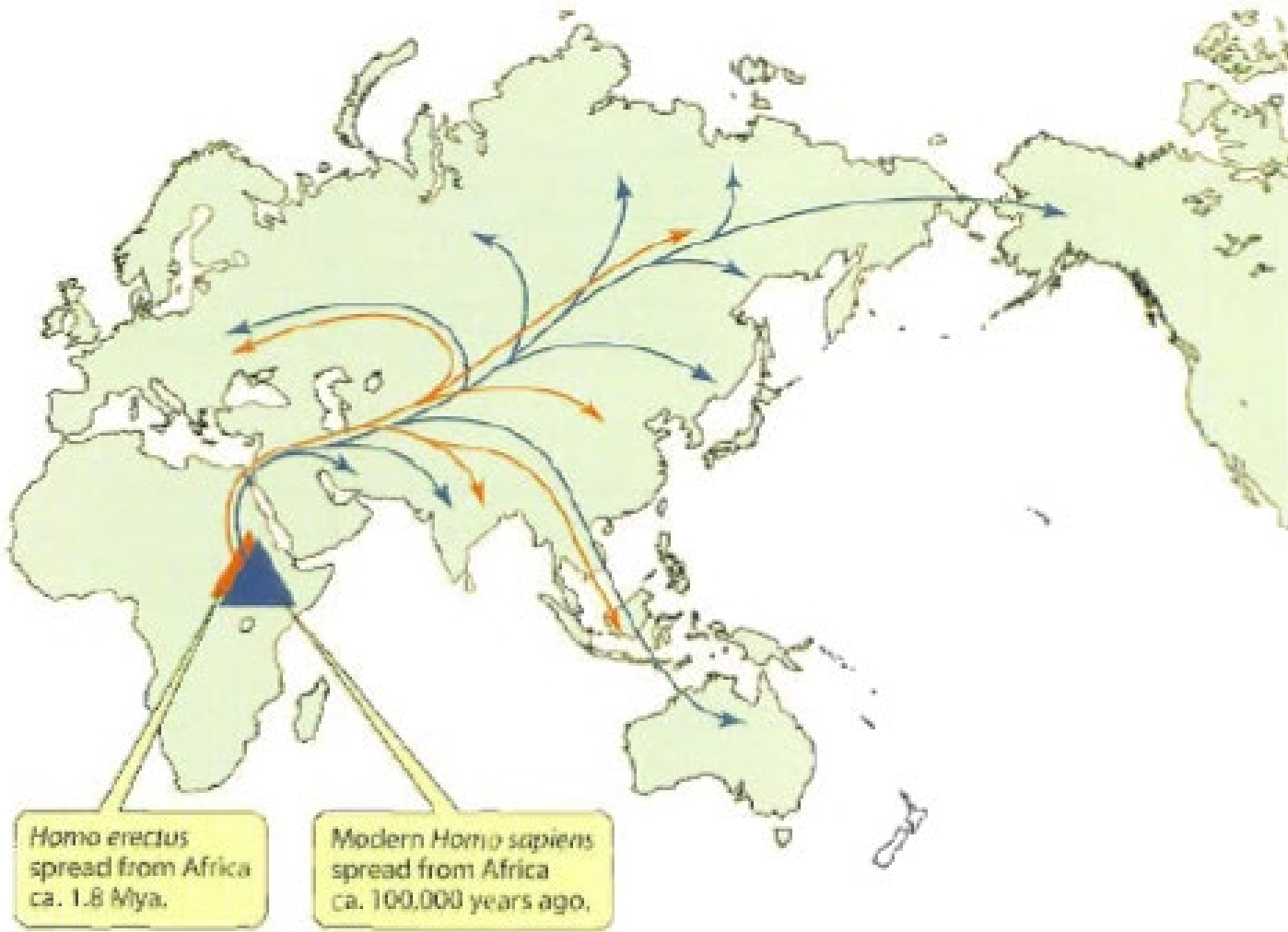
Branch lengths are proportional to the number of nucleotide substitutions per 100 base pairs.

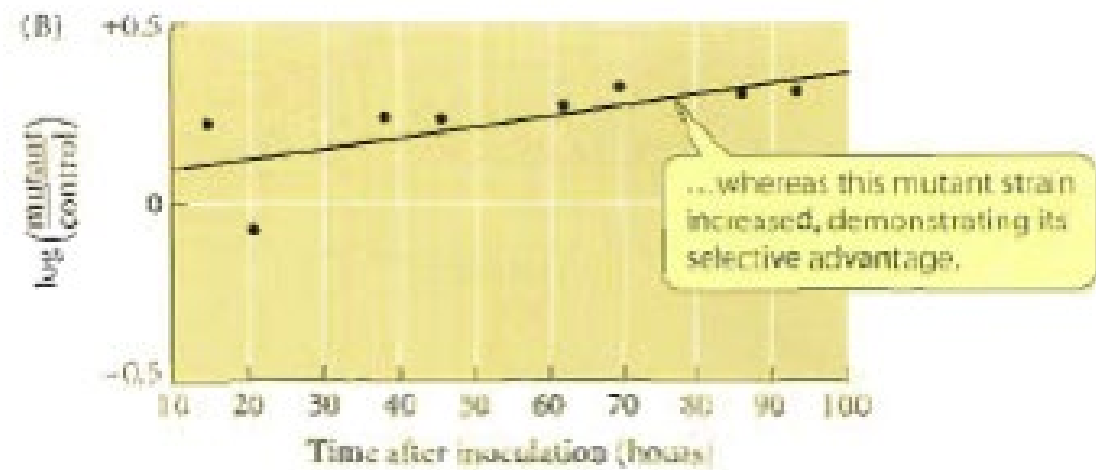
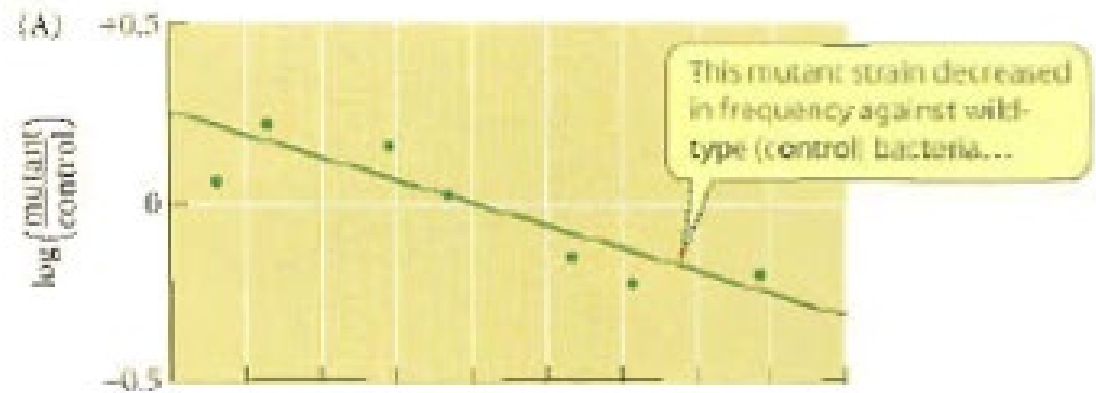
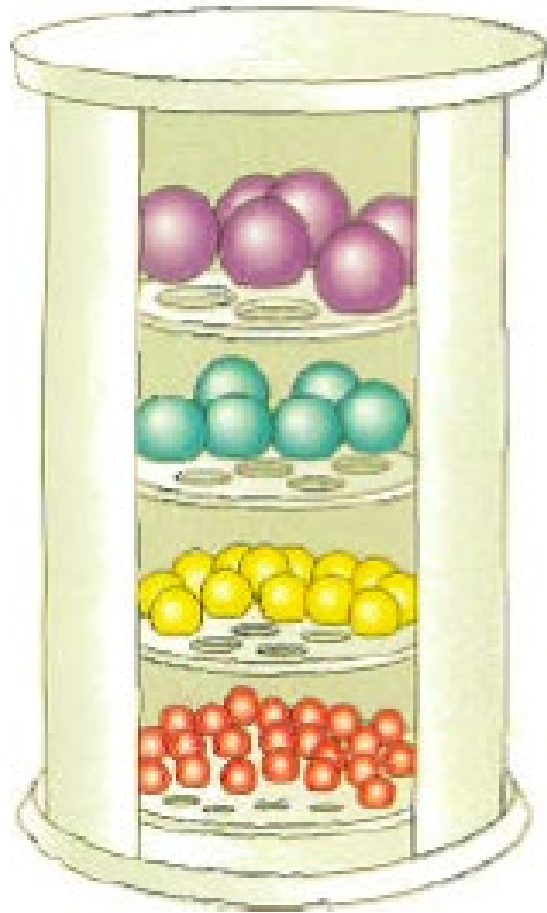
(B) Nonsynonymous substitutions



Nonsynonymous substitution has been slowest in the primate lineage.







The *his^r* allele, which is neutral, fluctuates in frequency by "hitchhiking" with advantageous mutations.

