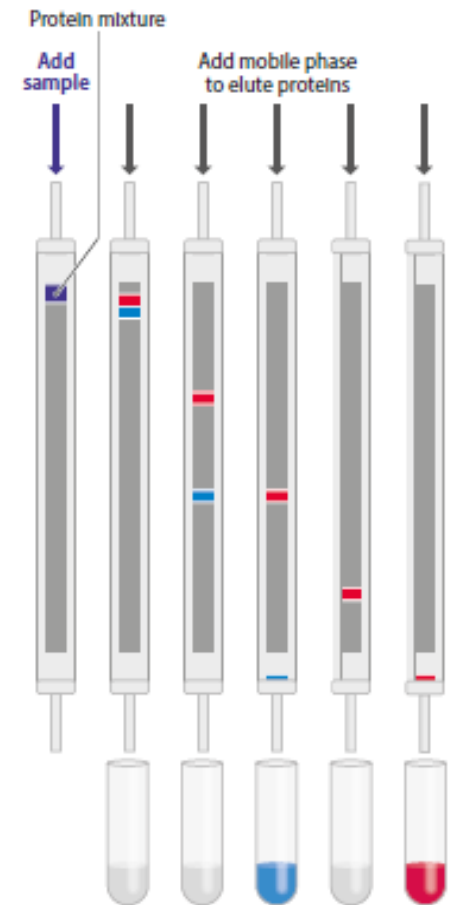
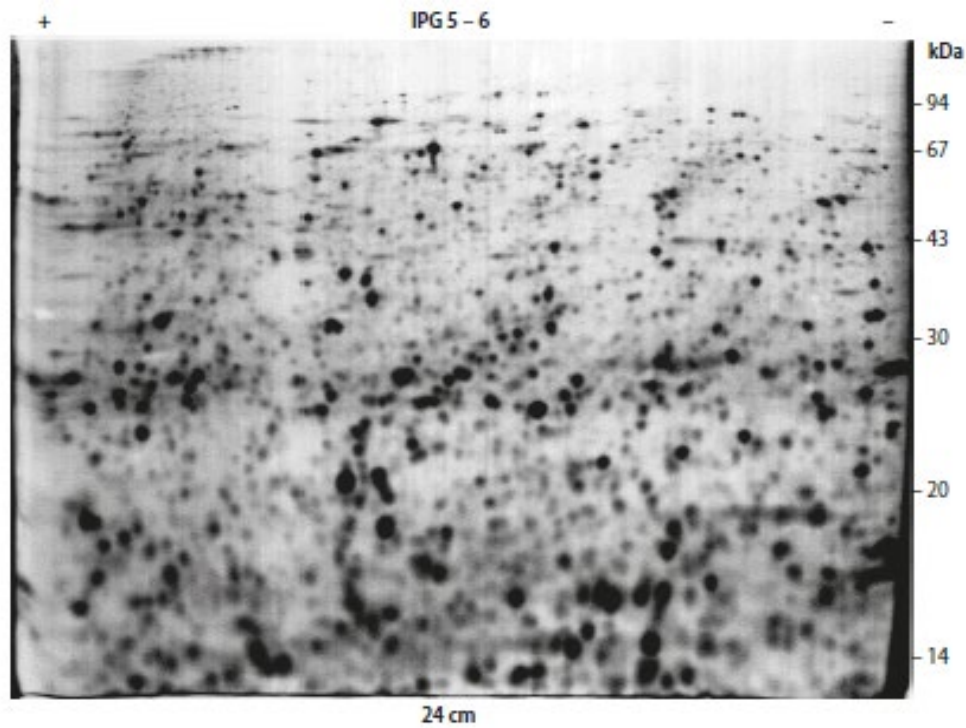
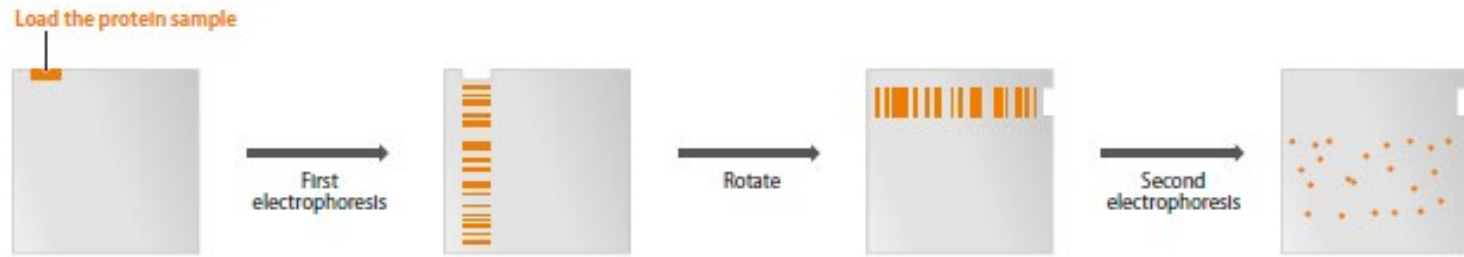
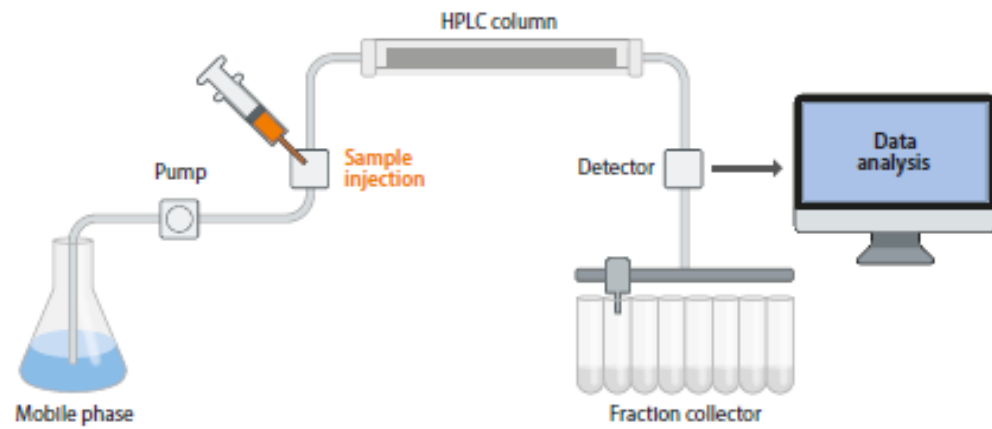


Proteom

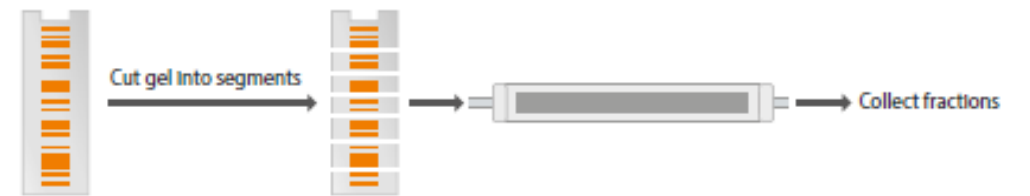




(A) Chromatography in sequential columns



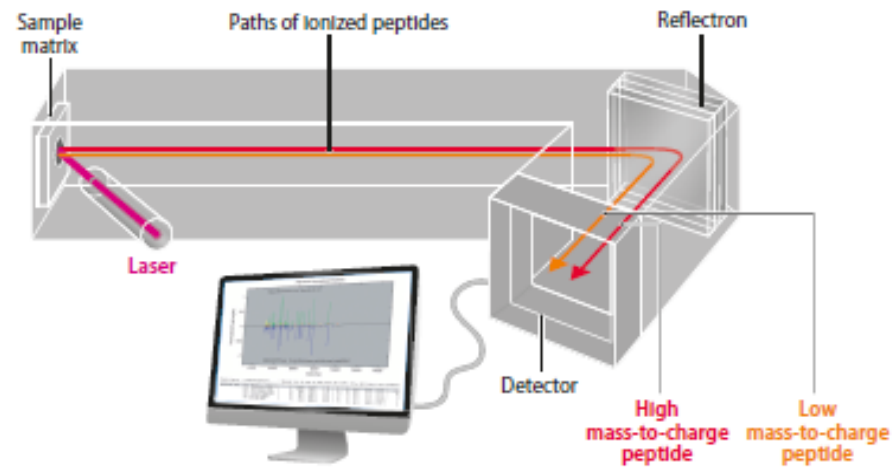
(B) PAGE followed by column chromatography



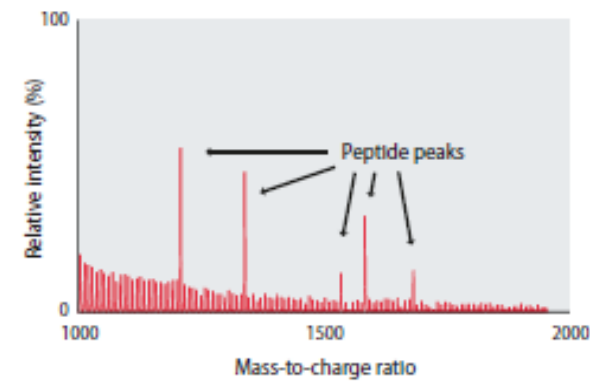
(C) Online column chromatography system



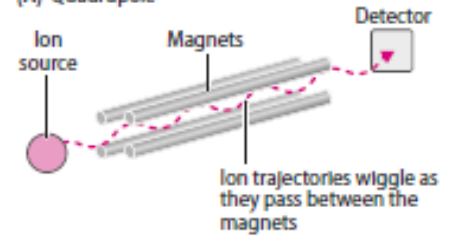
(A) MALDI-TOF mass spectrometry



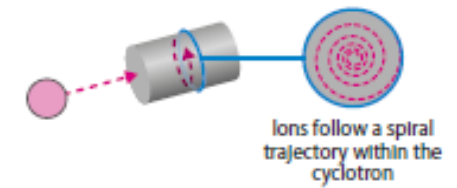
(B) MALDI-TOF spectrum

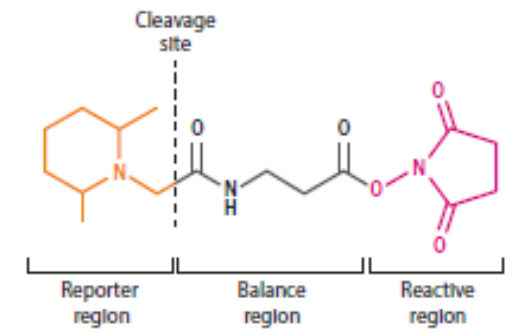
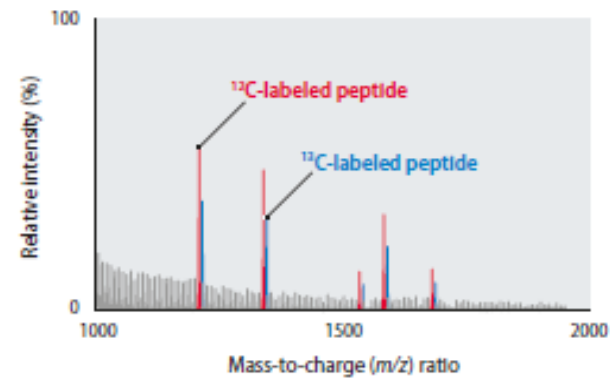
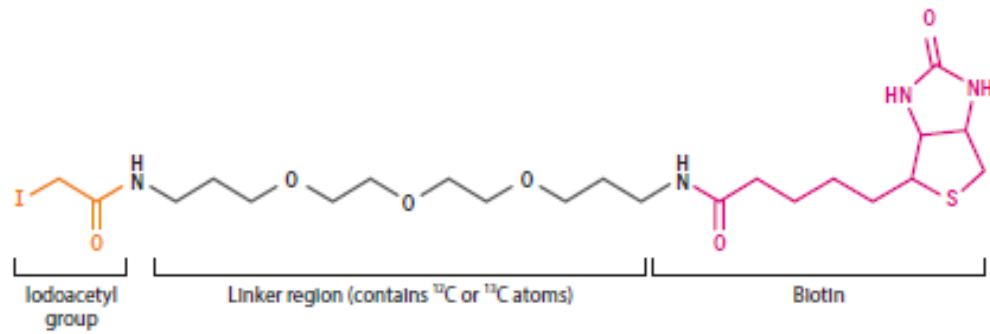


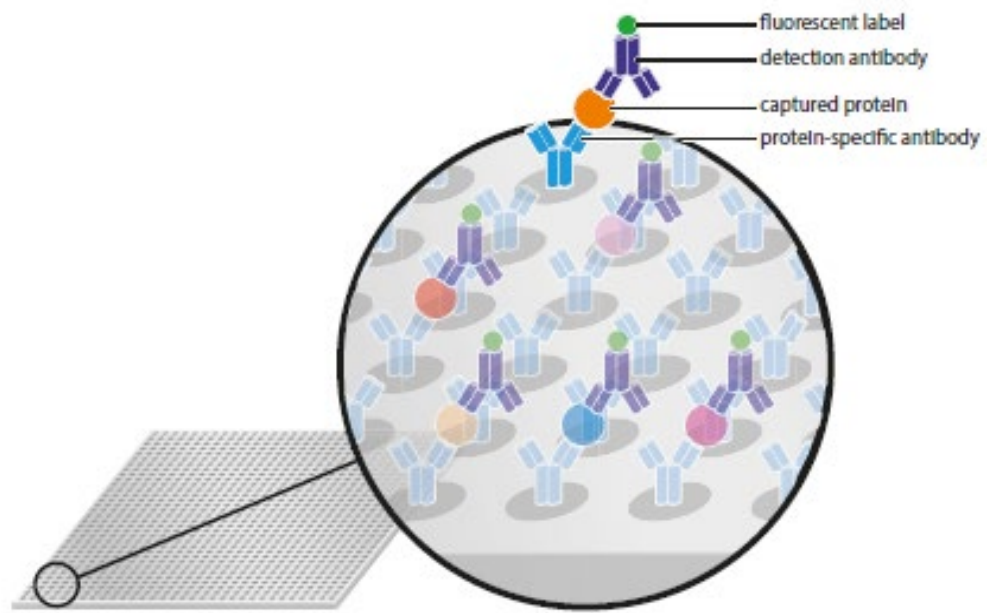
(A) Quadrupole



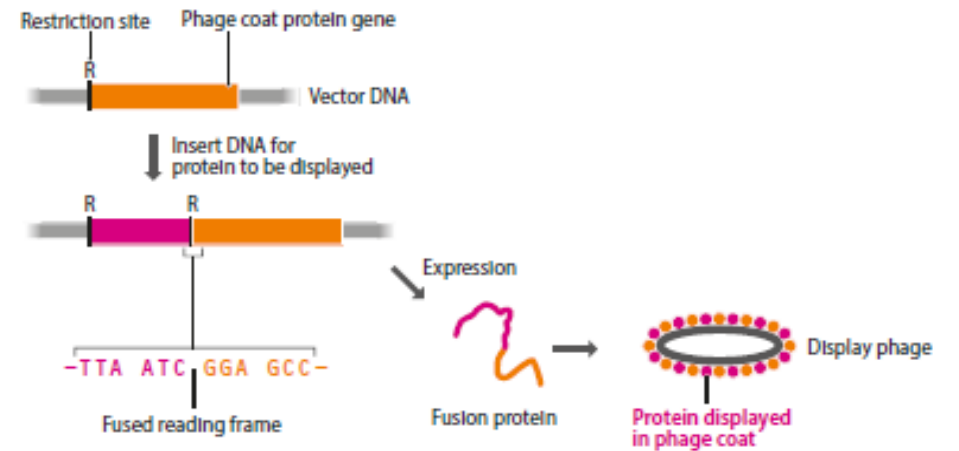
(B) Fourier transform ion cyclotron resonance



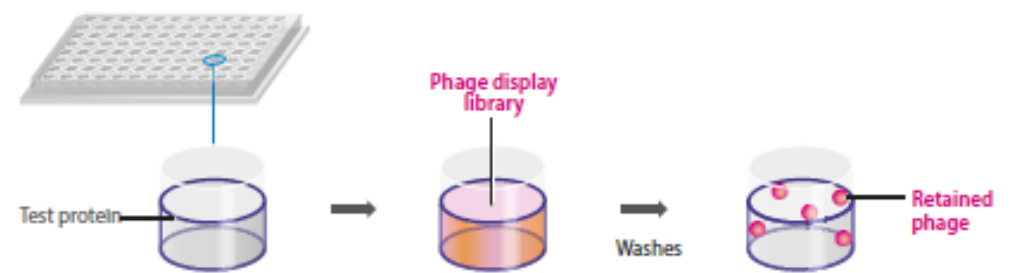




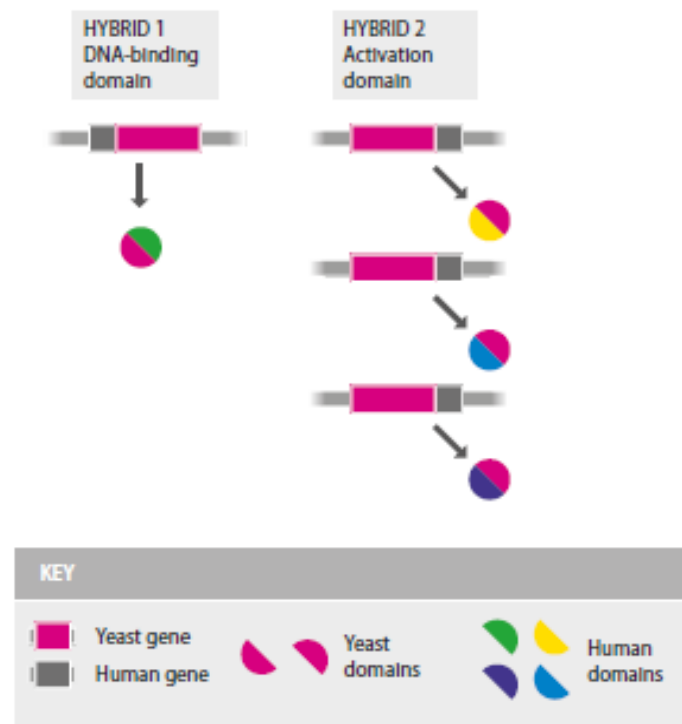
(A) Production of a display phage



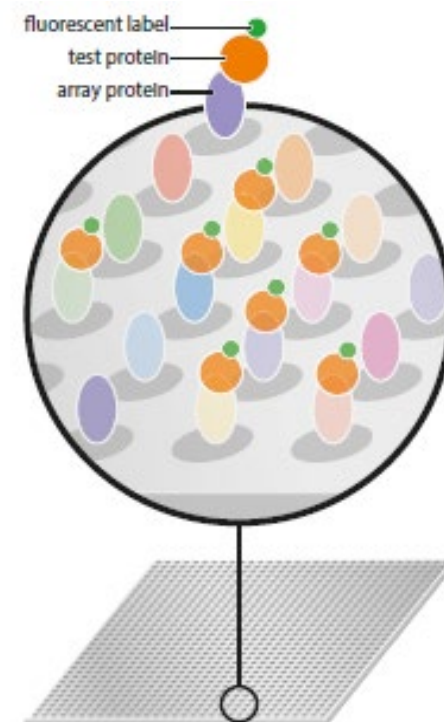
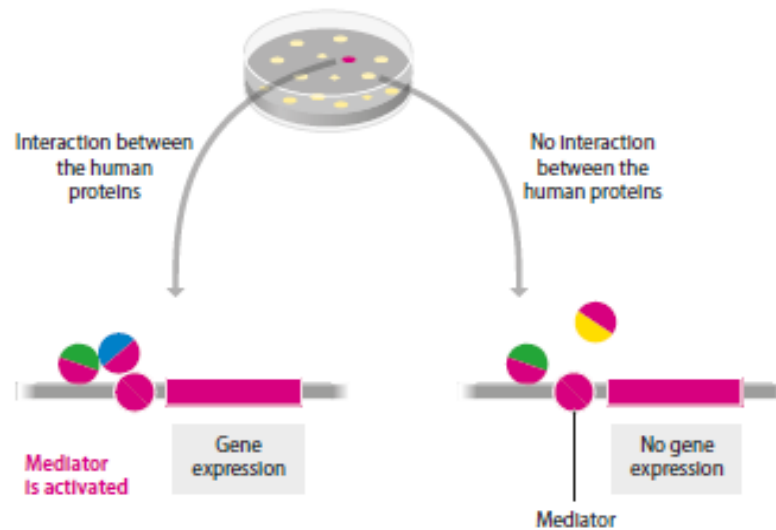
(B) Using a phage display library



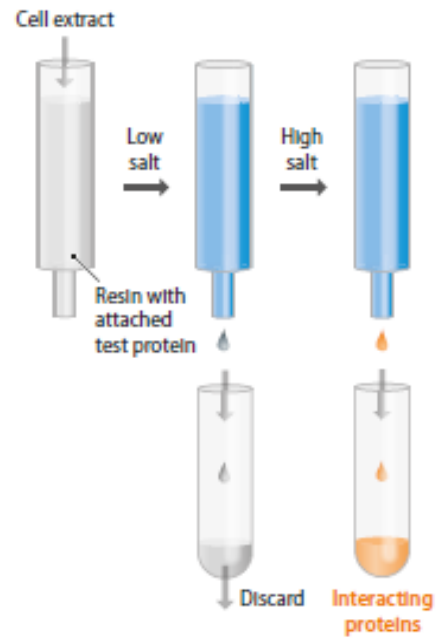
(A) The two-hybrid system



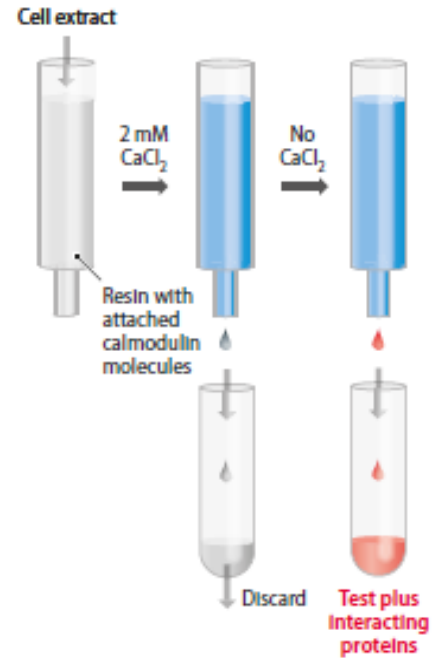
(B) Screening for protein interactions using the two-hybrid system



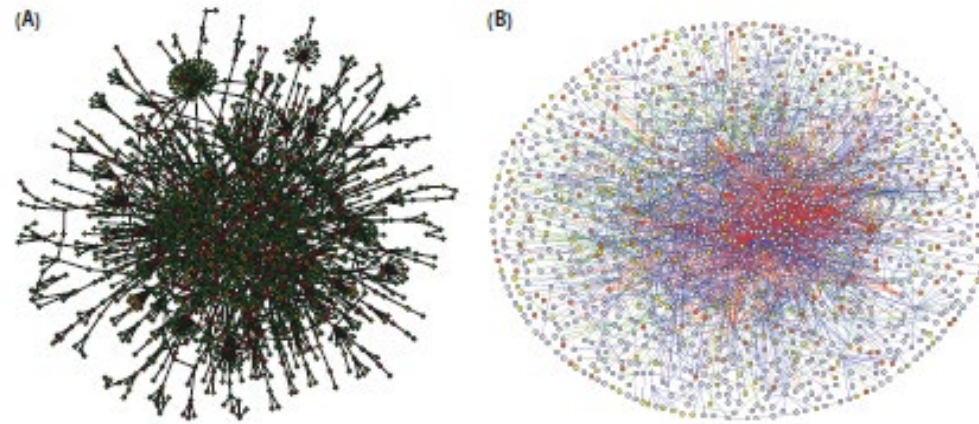
(A) Standard affinity chromatography



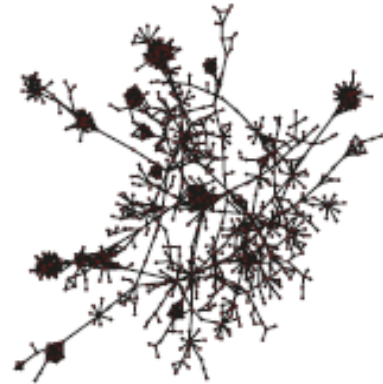
(B) Tandem affinity purification



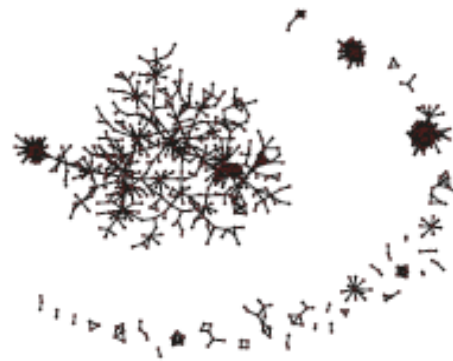




(A) The complete network



(B) Removal of party hubs



(C) Removal of date hubs

