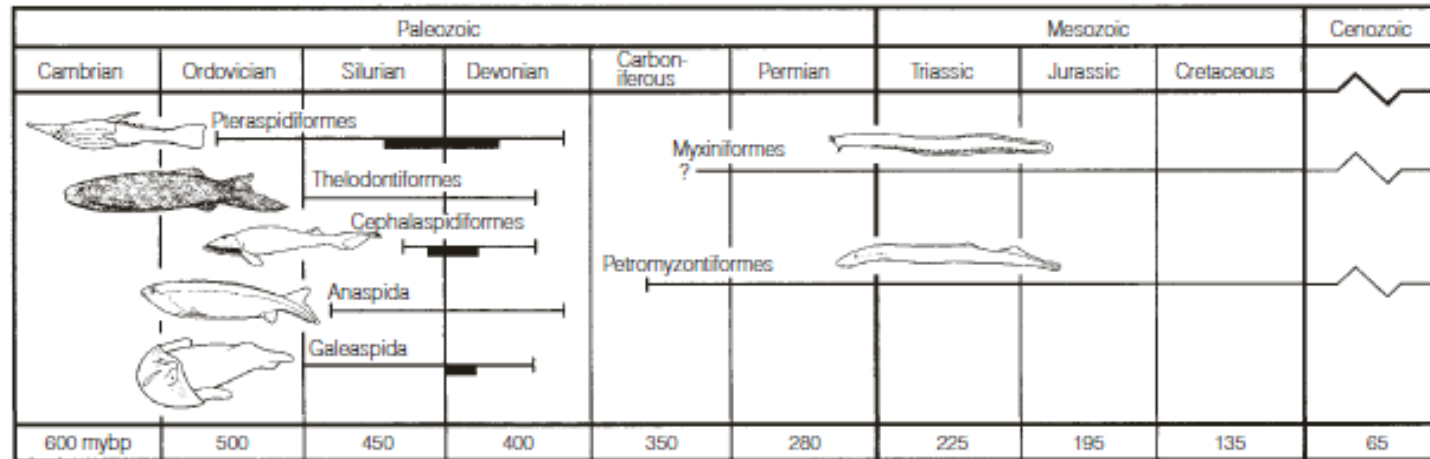
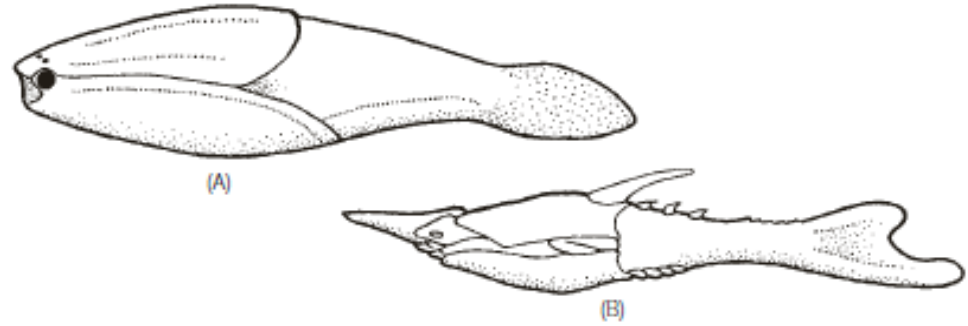
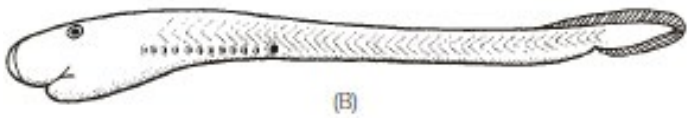


Balıkların Moleküler Evrimi



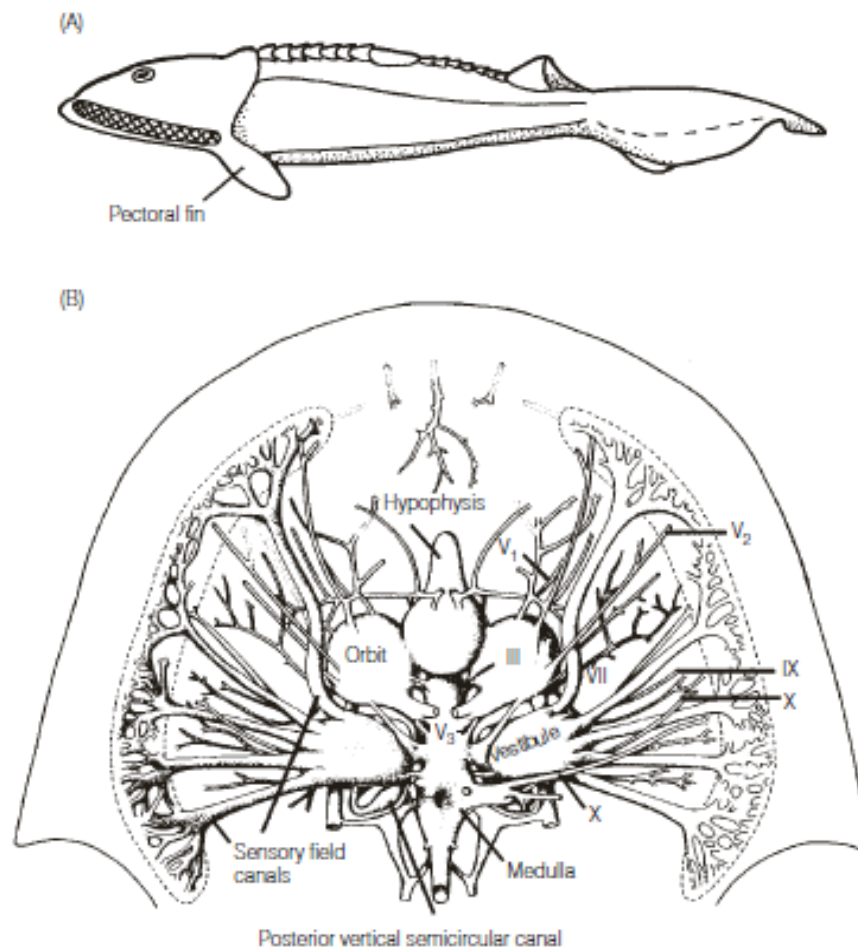
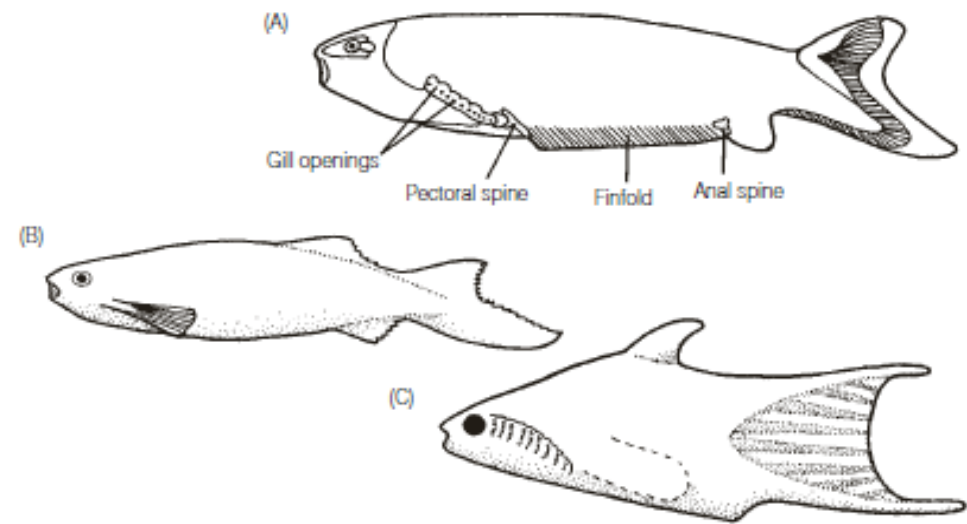


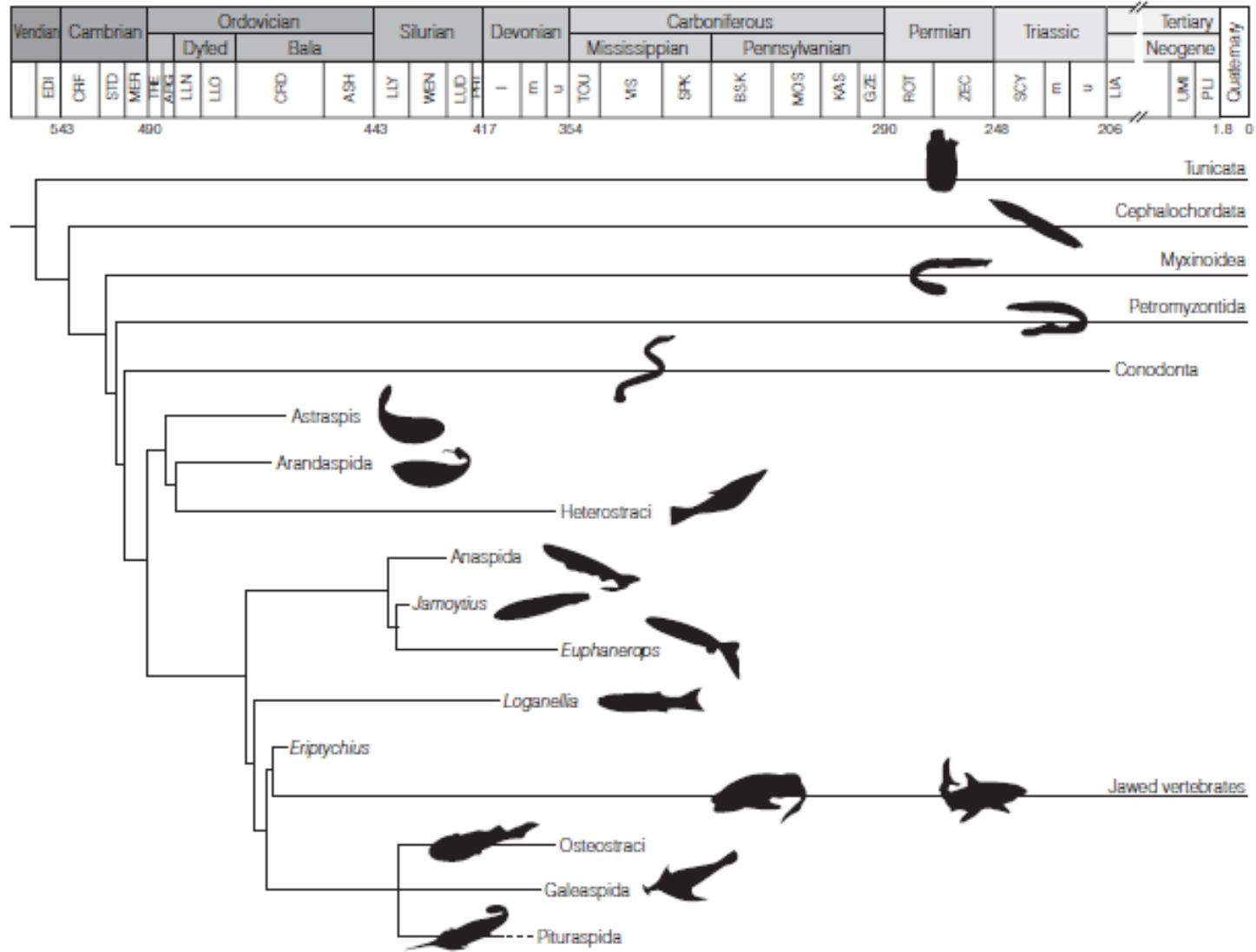
Axis of symmetry
(A)

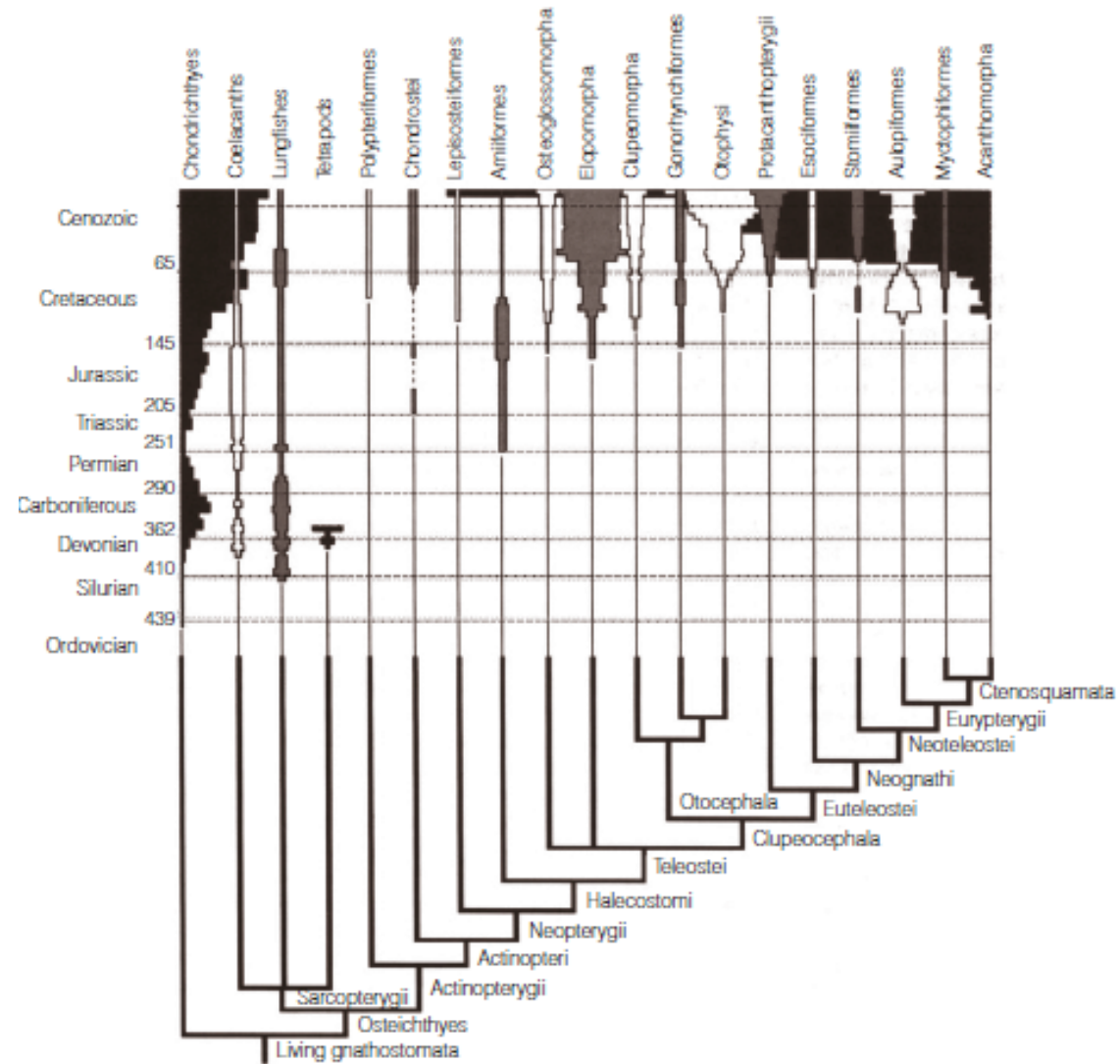


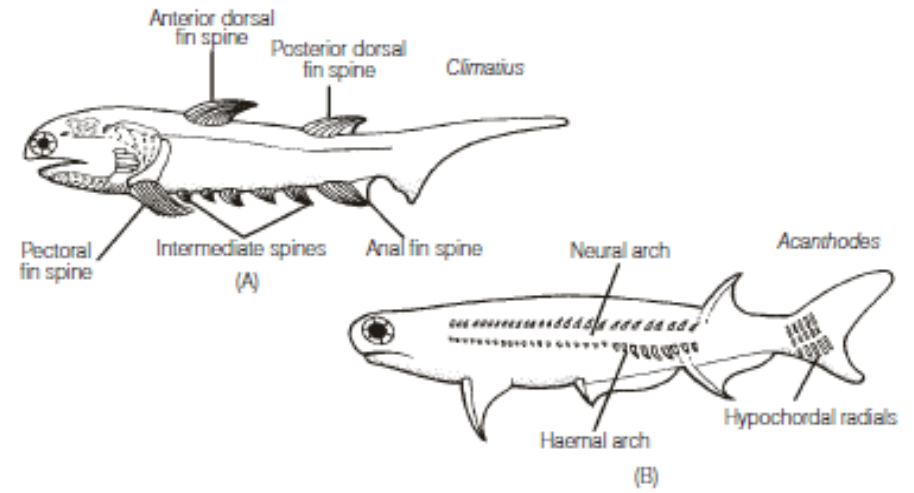
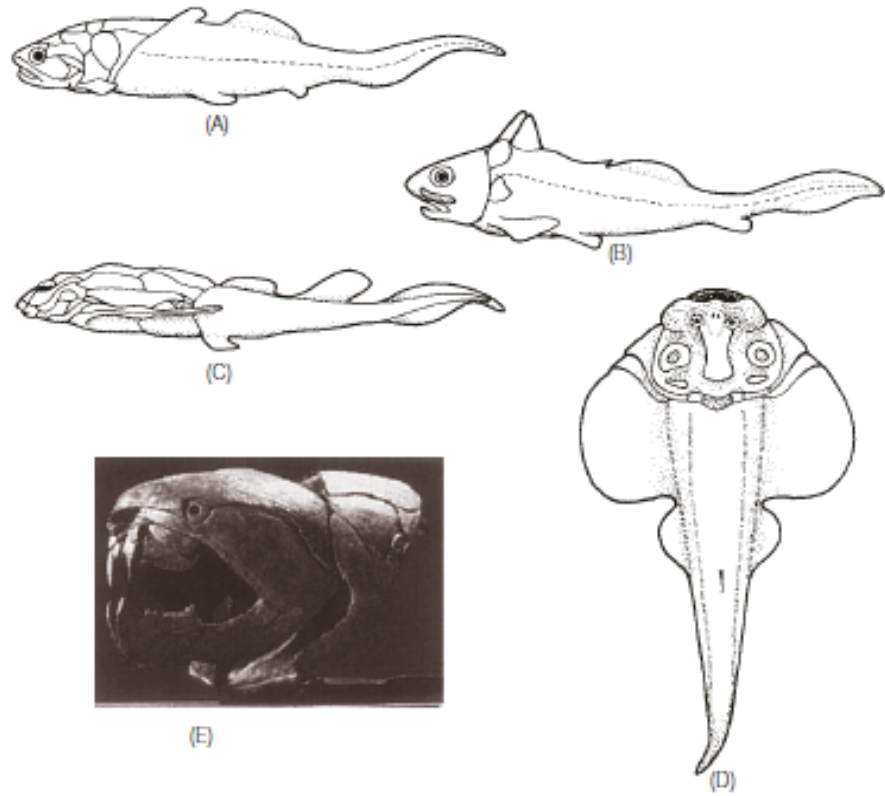
(A)

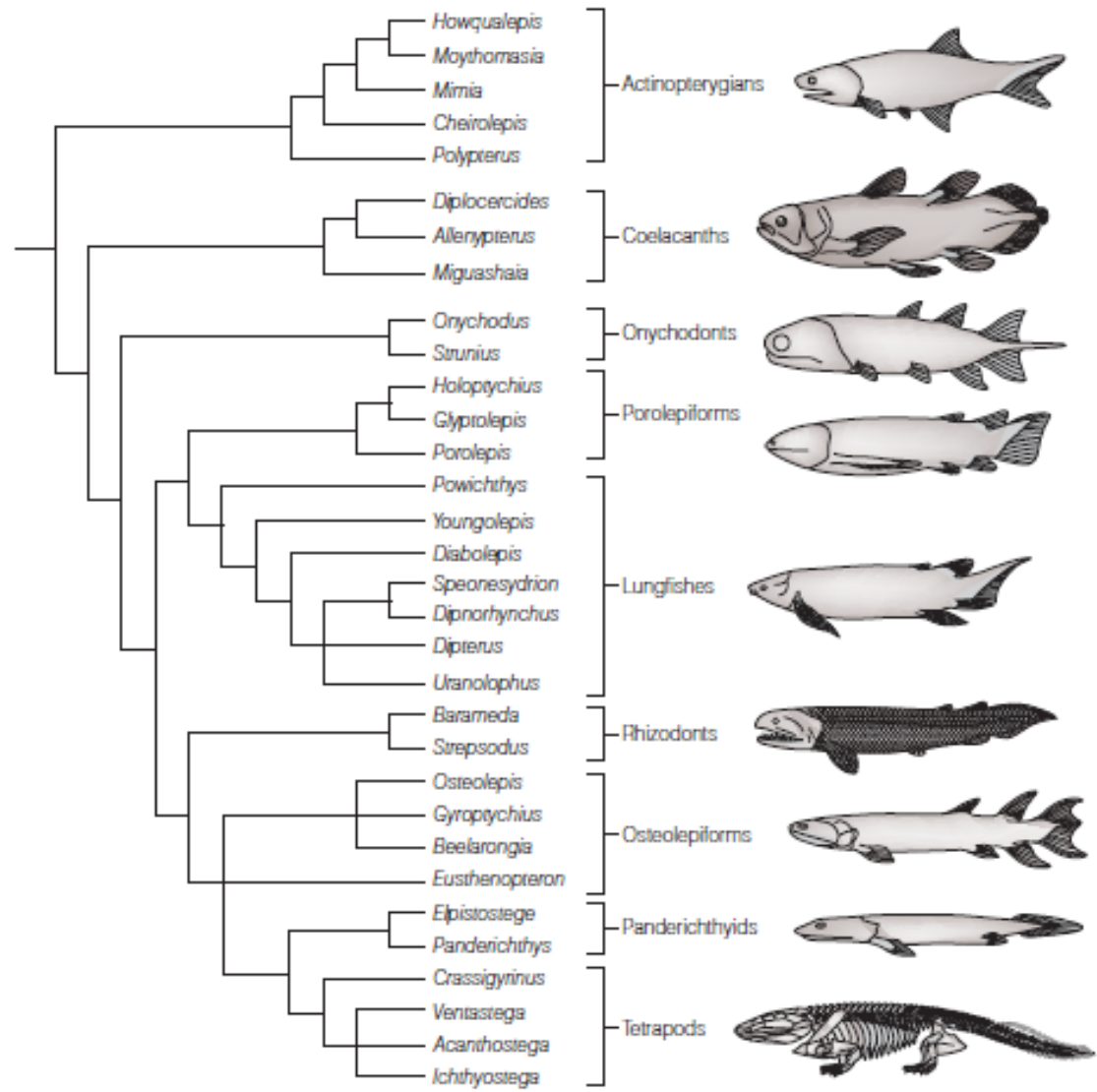
(B)

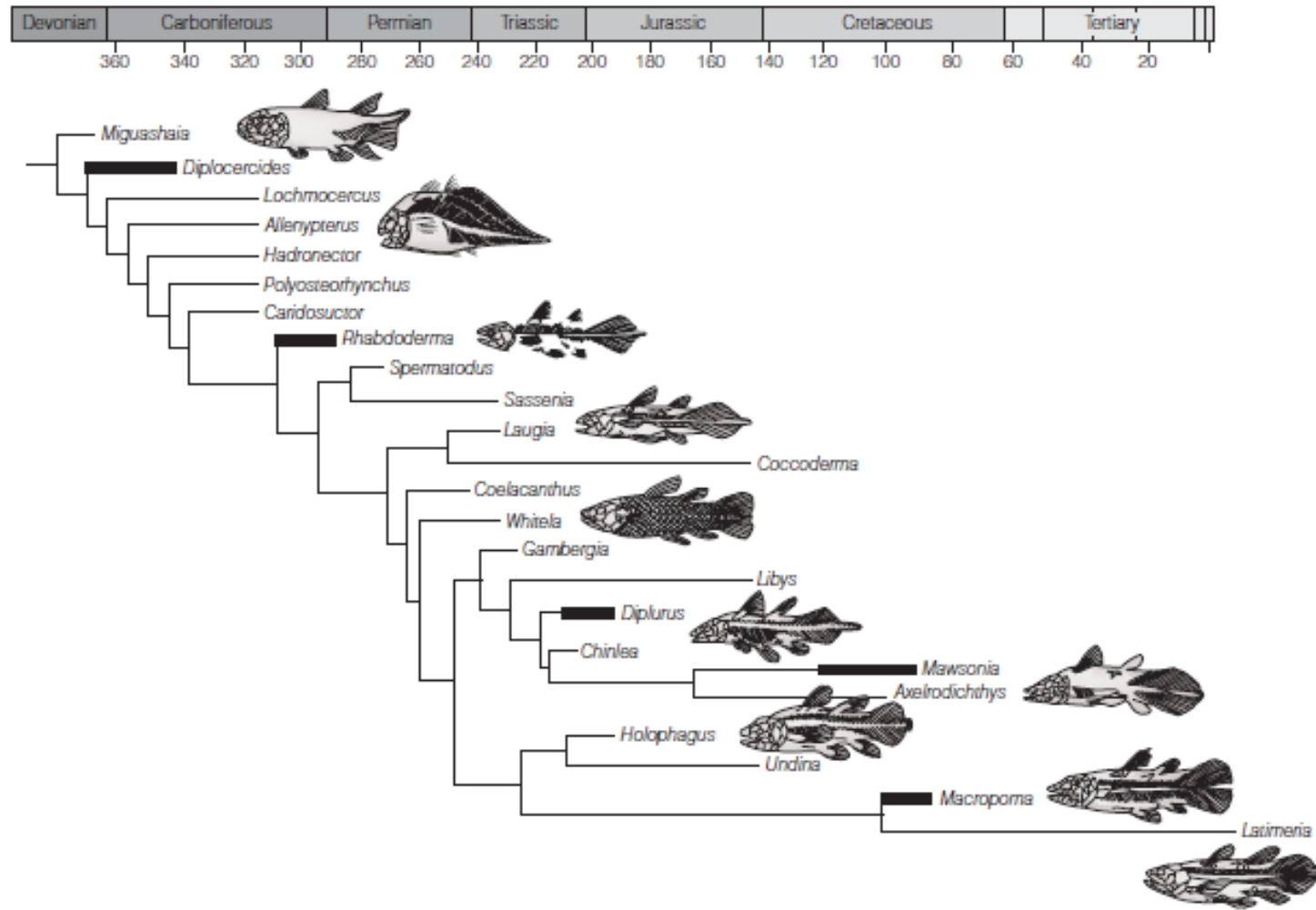


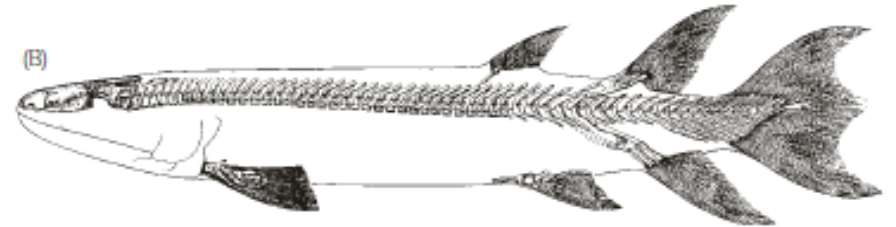
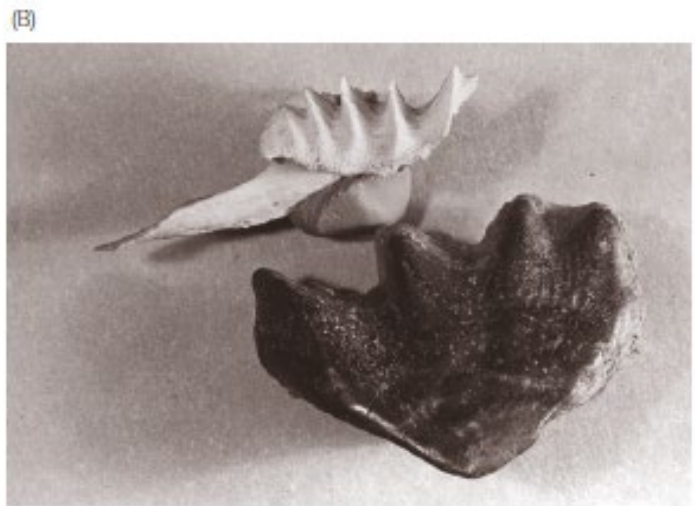
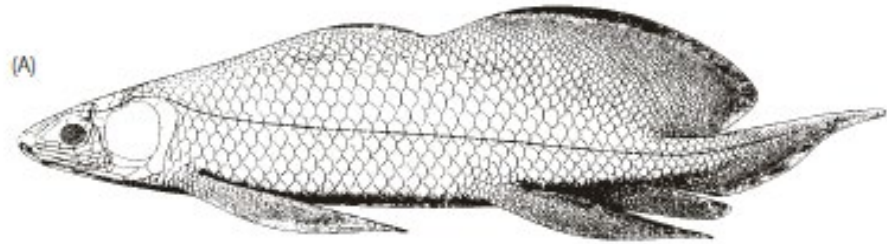


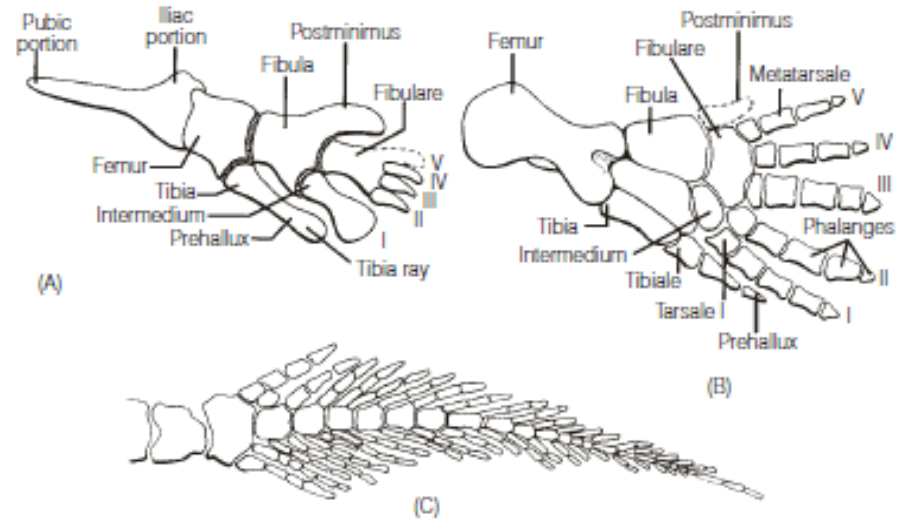
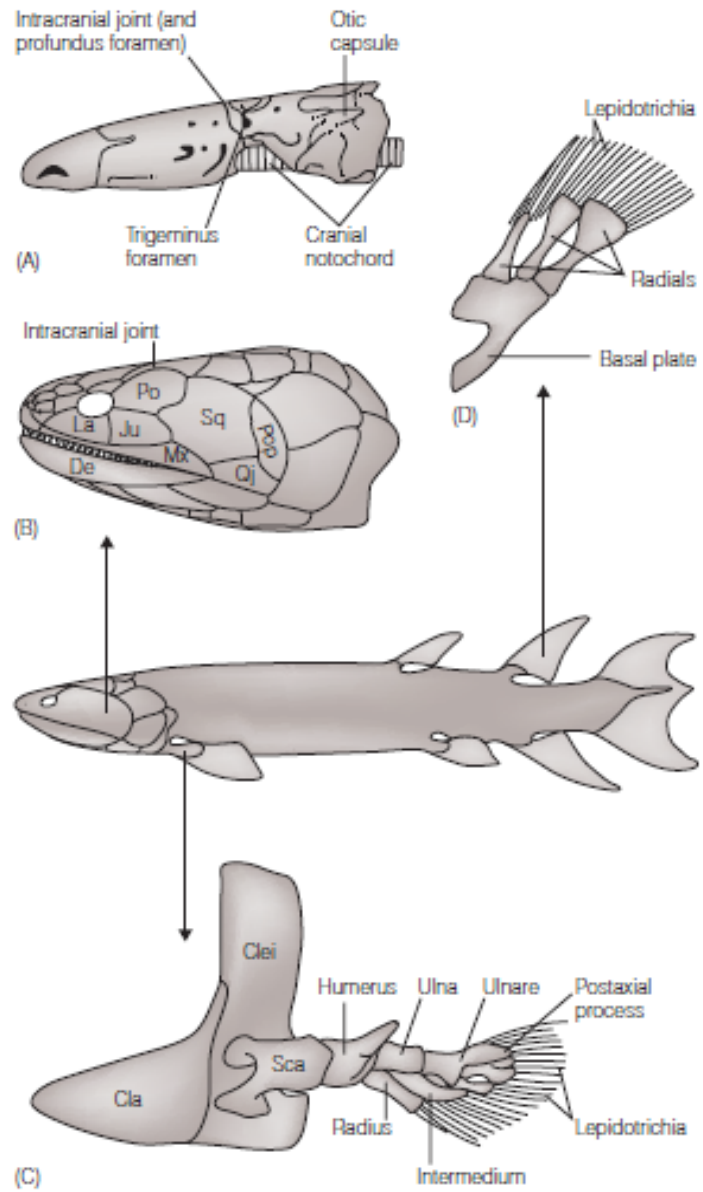


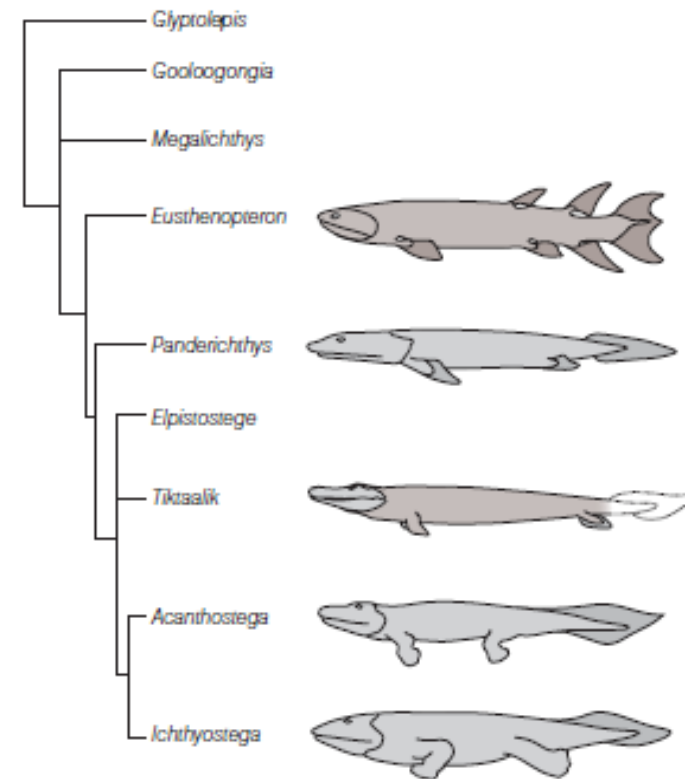
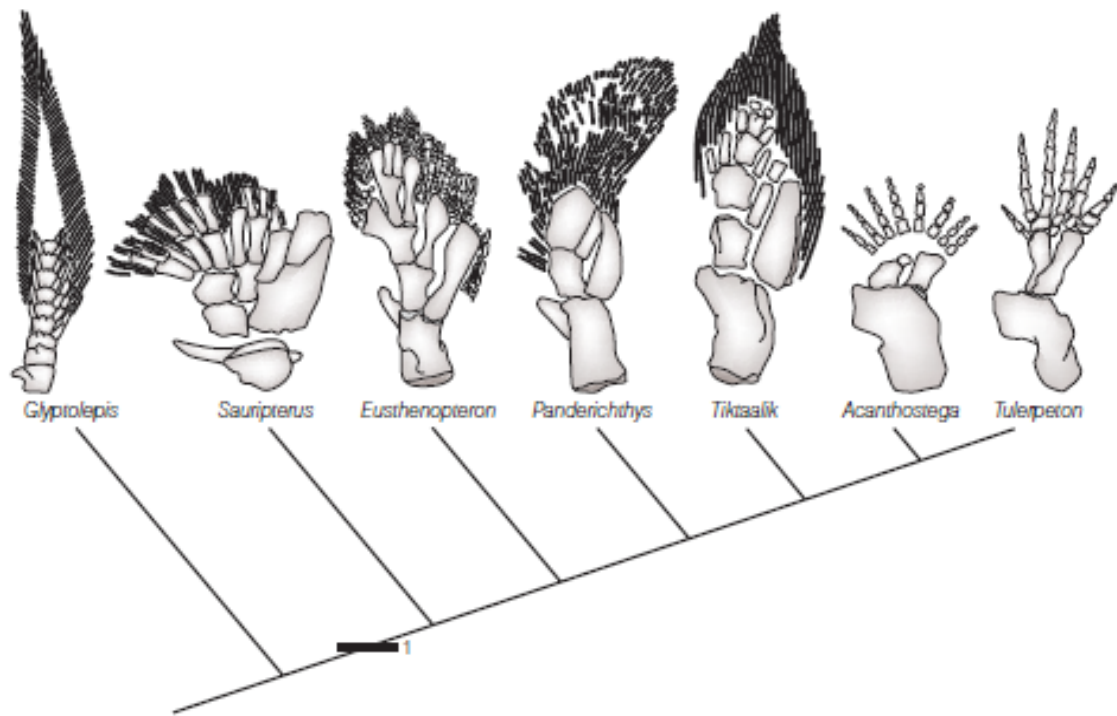


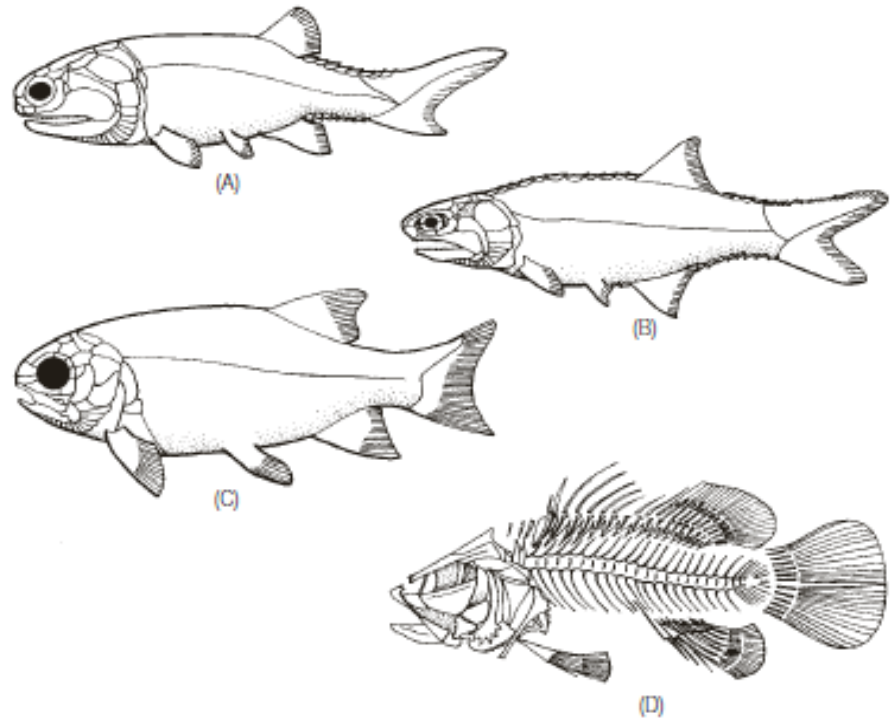

























	Paleozoic paleoniscoids	Mesozoic neopterygians	Modern teleosts
1	 <i>Saurchthys</i>	 <i>Aspidorhynchus</i>	 A belonid needlefish
2	 <i>Dorypterus</i>		 A carangid permit
3	 <i>Mesolepis</i>	 <i>Lepidotes</i>	 A catostomid sucker
4	 <i>Tarasius</i>		 A clinid
5	 <i>Cheirodus</i>	 <i>Proscineres</i>	 A chaetodontid butterflyfish

