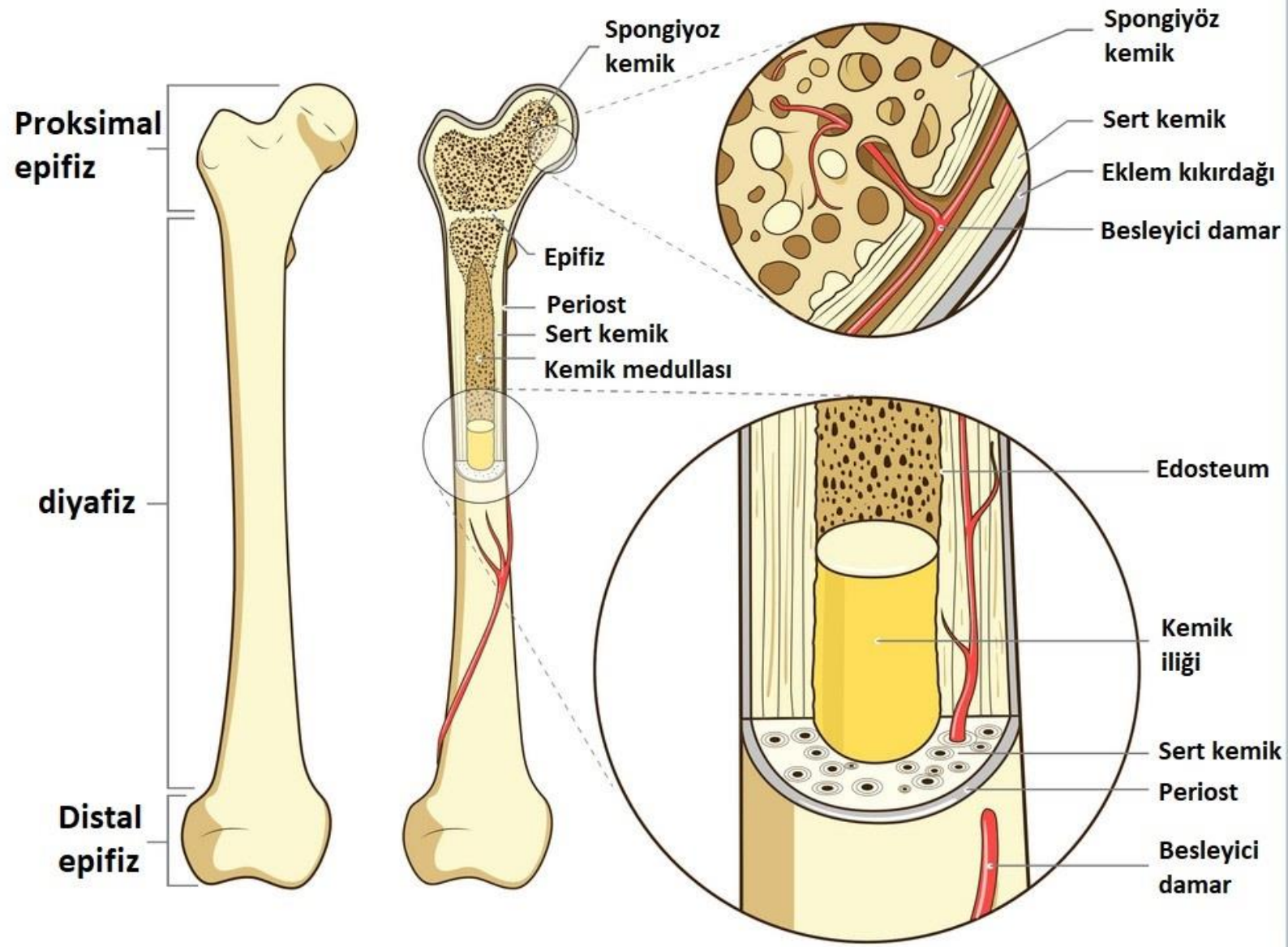
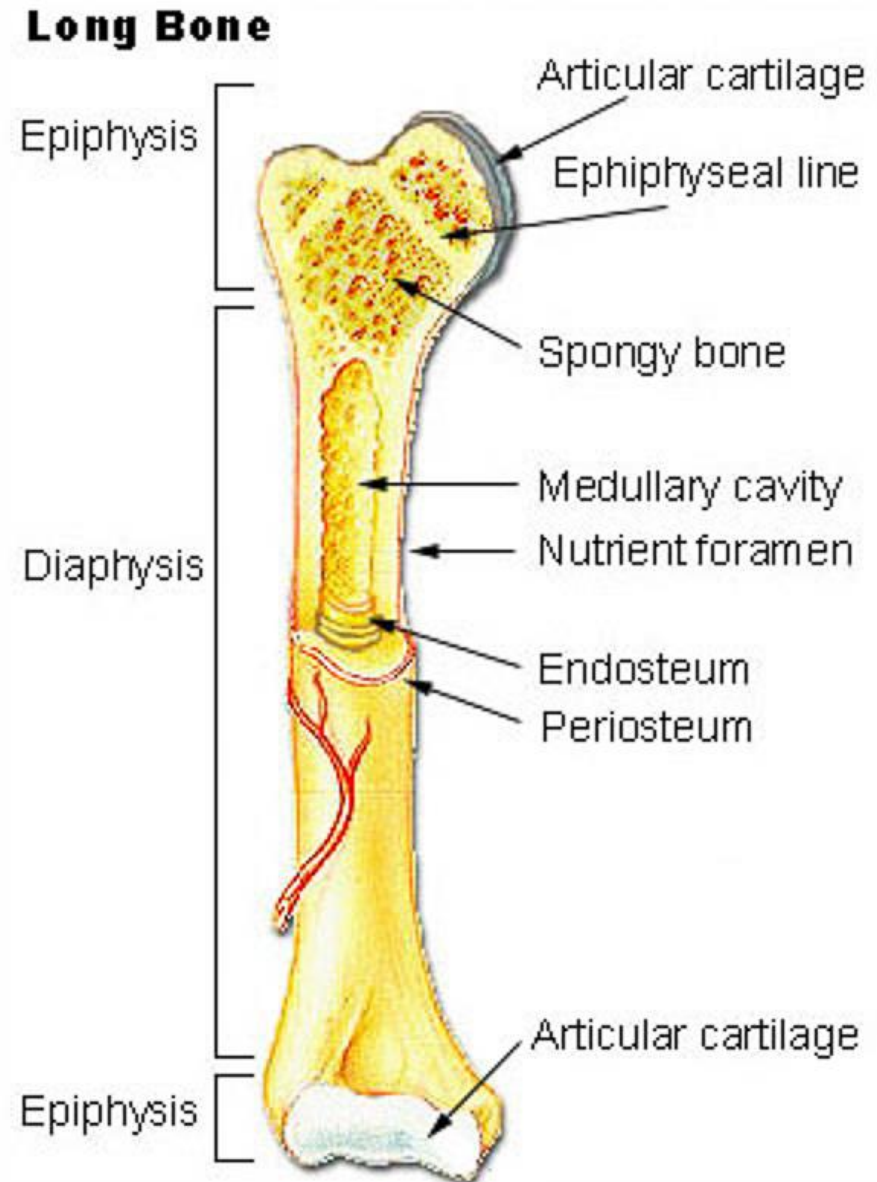
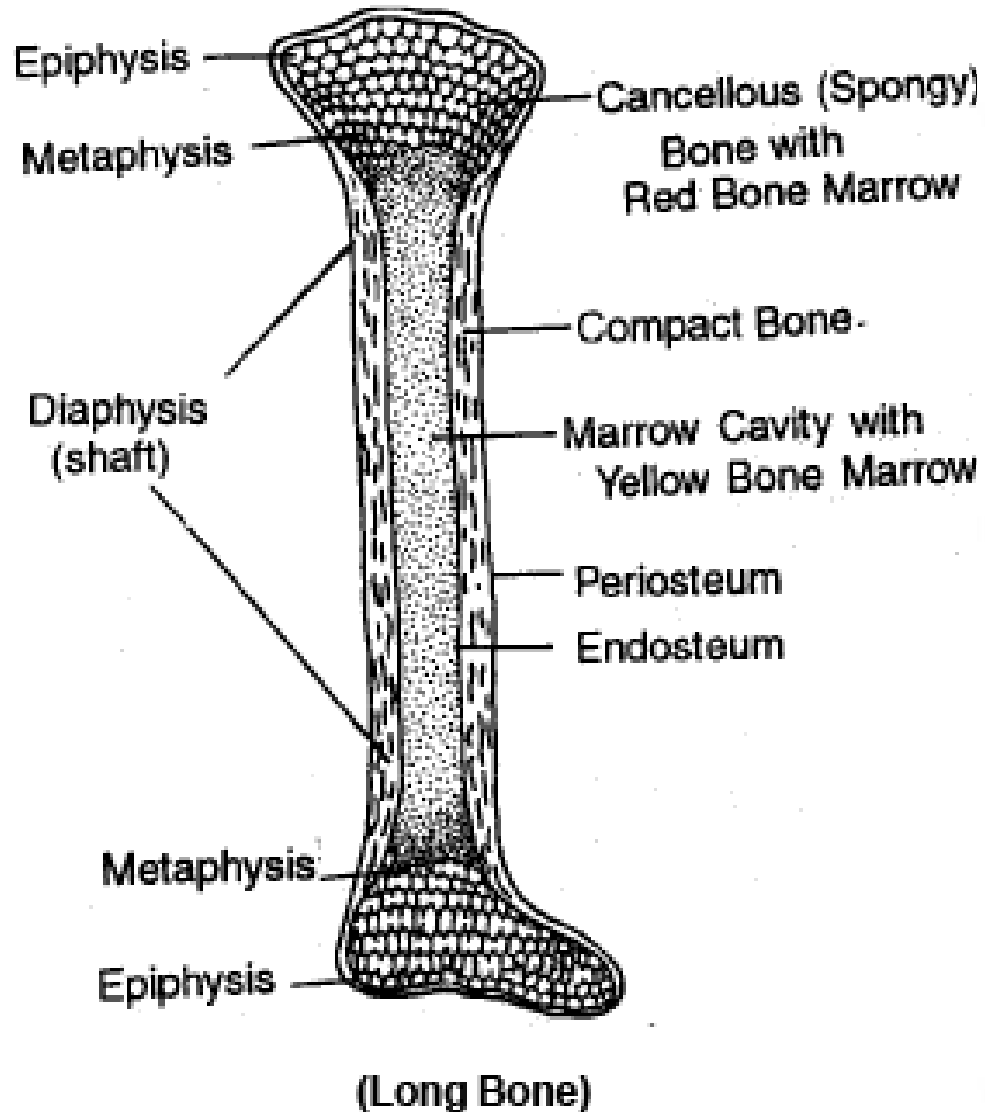


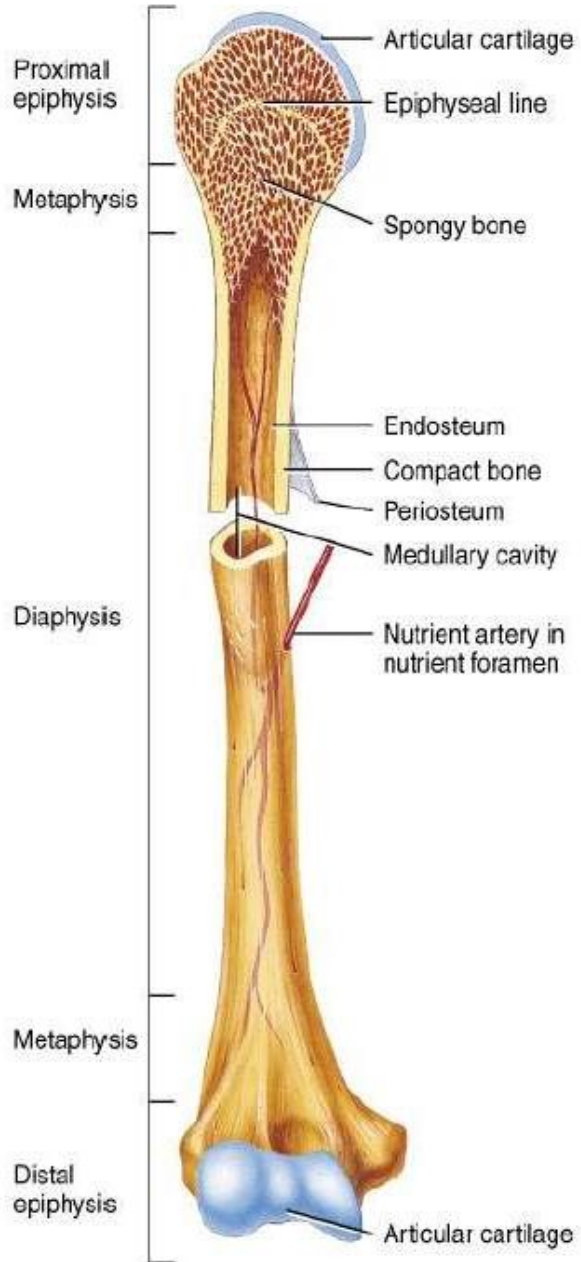
Kemiğin yapısı



Diaphysis (Diyafiz): Uzun kemiklerde ortada eklem bağlantısı olmayan kısım



Epiphysis (Epifiz): Uzun kemiklerde kemik ucu



Epifiz

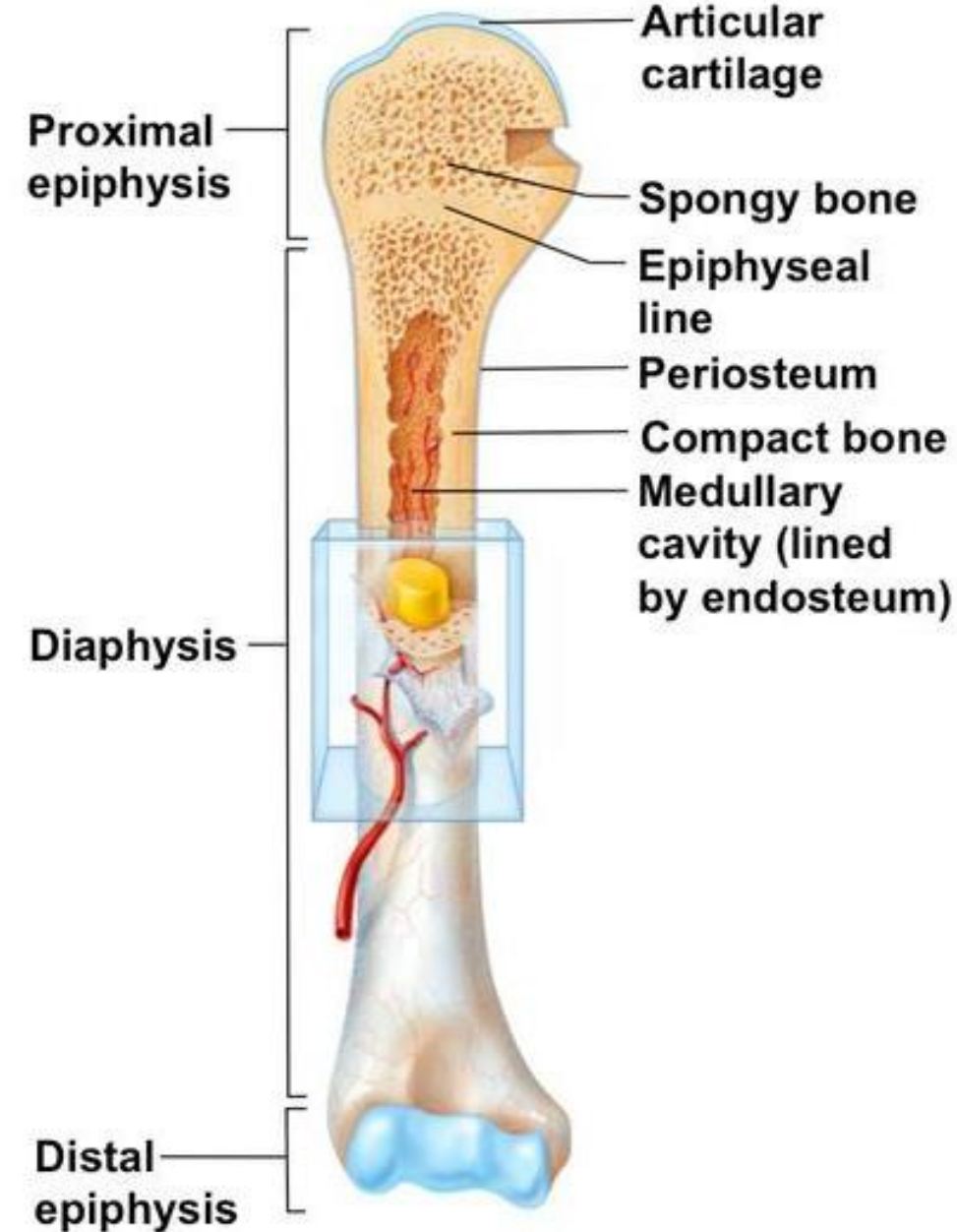
Uzun kemiklerin uçları

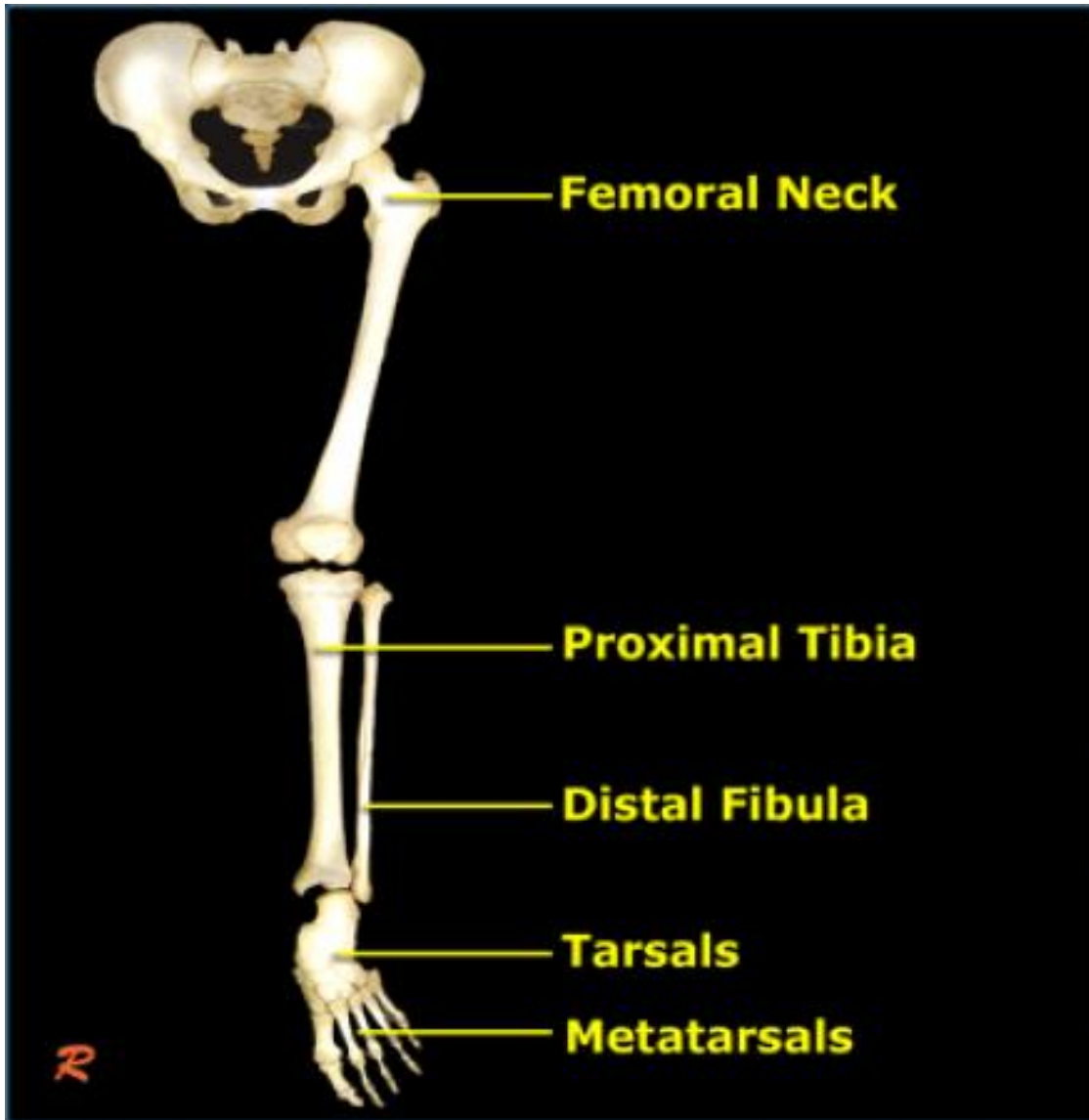
Diafiz

Uzun kemiklerin gövdesi

Metafiz

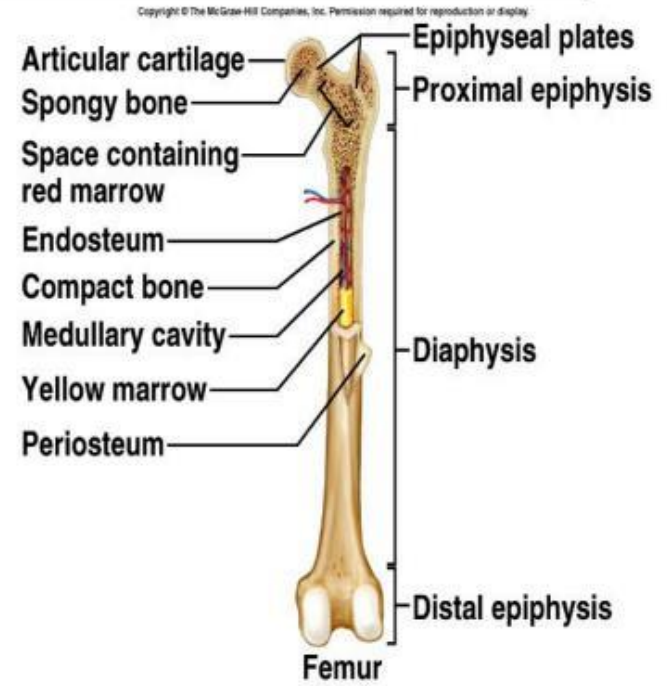
epifiz ile diafiz arasında kemik gelişiminin olduğu bölge

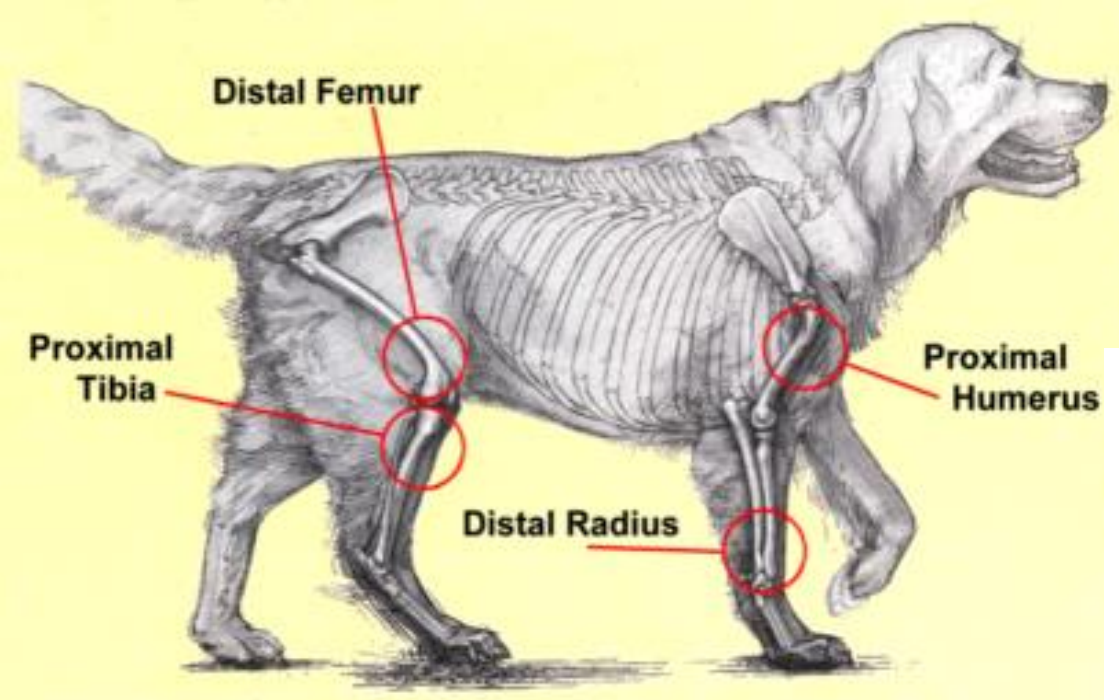




Parts of a Long Bone

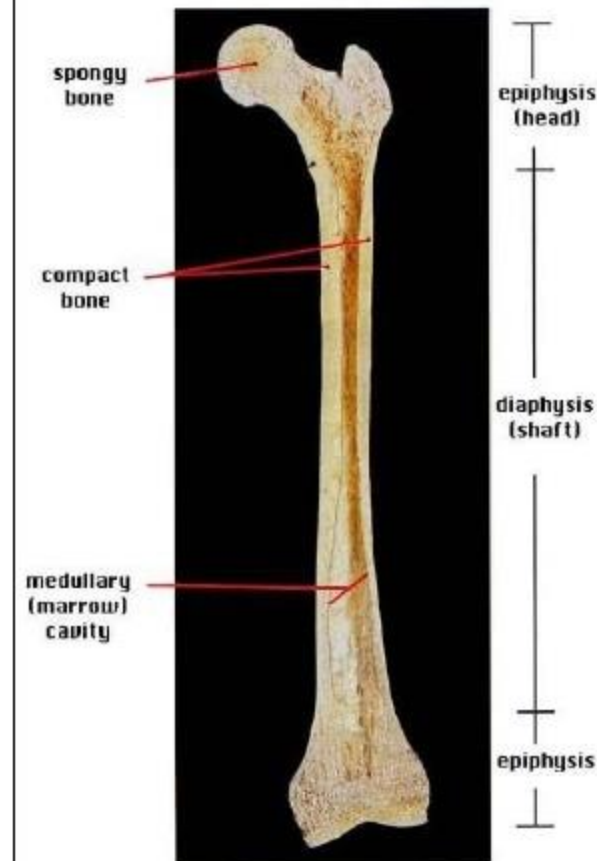
- **Epiphysis**
 - distal end
 - proximal end
- **Articular Cartilage**
 - Covers each epiphysis
 - Hyaline cartilage
- **Diaphysis**
 - Shaft
- **Metaphysis**
 - Area between diaphysis and epiphysis in mature bone

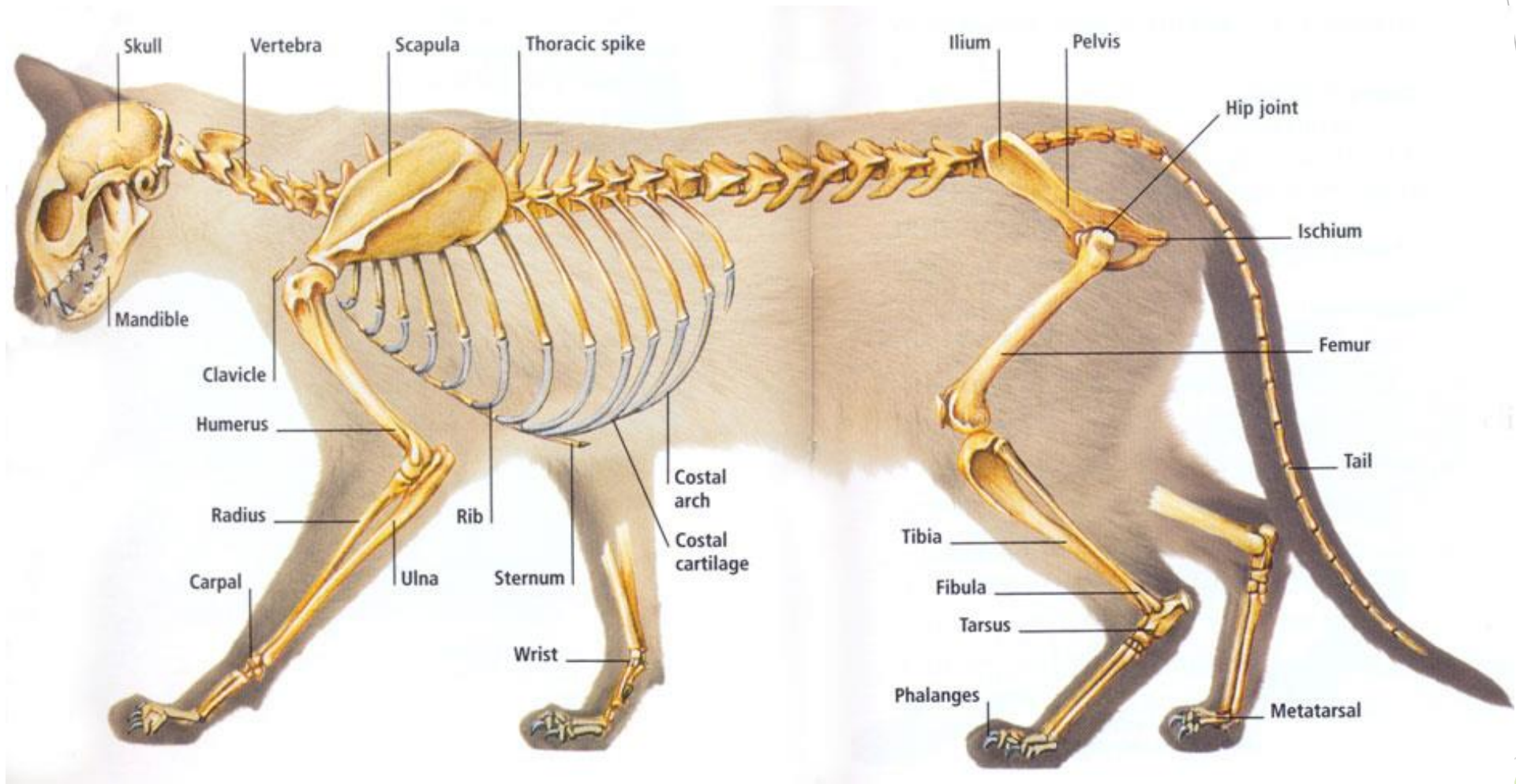




The *epiphyses* are named according to their location. The epiphysis closest to the body's center is the **proximal epiphysis**, while that located farthest away is the **distal epiphysis**.

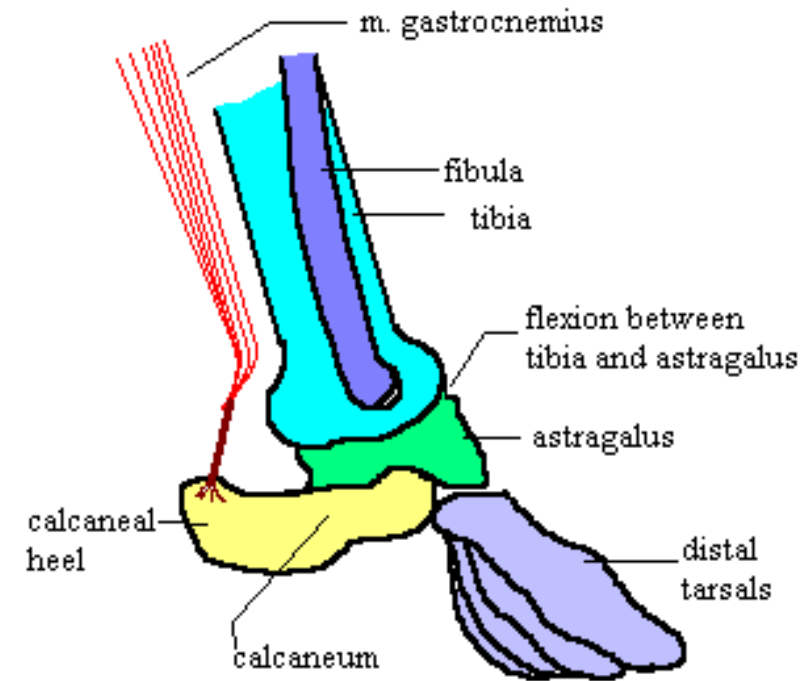
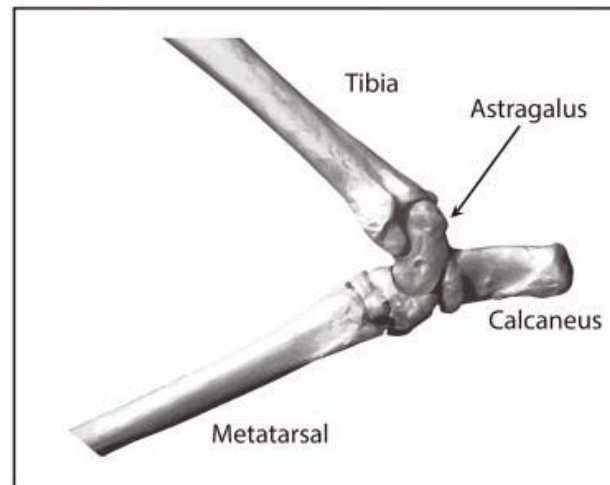
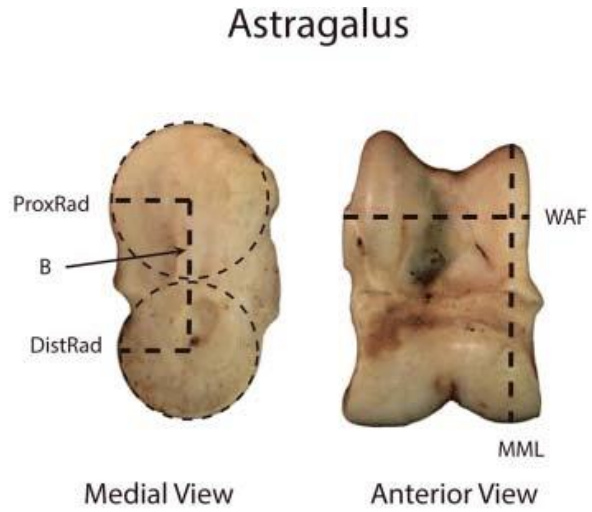
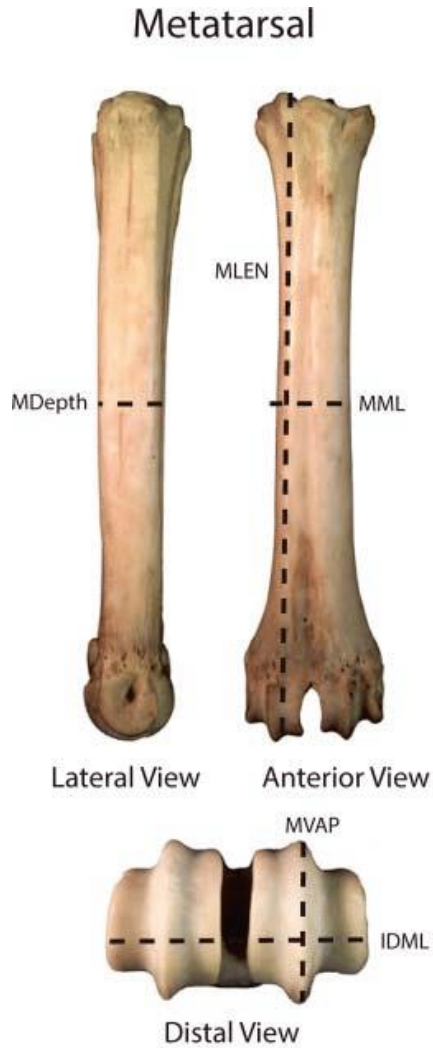
The long shaft between the epiphyses, called the *diaphysis*, is composed of mostly *compact bone* and is "hollow."



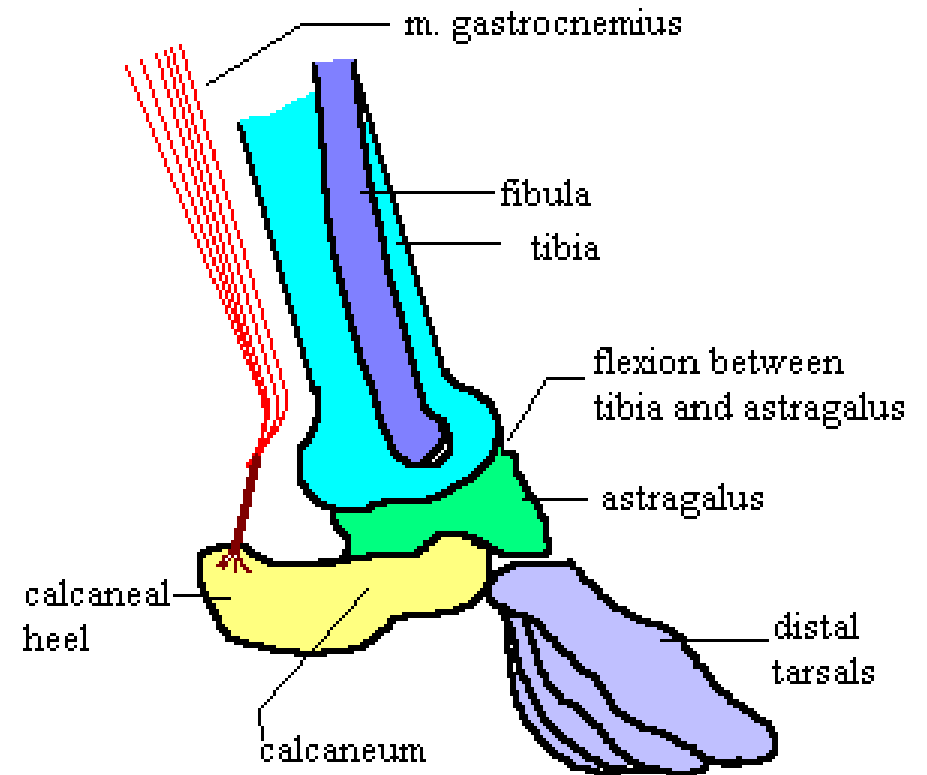


- ▶ **Astragalus:** Aşık kemiği,
- ▶ **Calcaneus:** Topuk kemiği,
- ▶ **Cranial:** Kafatası,
- ▶ **Diaphysis (Diyafiz):** Uzun kemiklerde ortada eklem bağlantısı olmayan kısım,
- ▶ **Epiphysis (Epifiz):** Uzun kemiklerde kemik ucu,
- ▶ **Femur:** Uyluk kemiği,
- ▶ **Humerus:** Ön kol kemiği,
- ▶ **İlium:** Kalça kemiği,
- ▶ **Mandibula:** Alt çene kemiği,
- ▶ **Metapodialis:** Ön ayak ve arka ayak tarak kemikleri,
- ▶ **Metacarpus:** Ön ayak tarak kemiği,
- ▶ **Metatarsus:** Ayak tarak kemiği,
- ▶ **Pelvis:** Leğen kemiği,
- ▶ **Phalanges:** Parmak kemikleri,
- ▶ **Post Cranial:** Kafa dışındaki beden iskeleti,
- ▶ **Radius:** Döner kemik,
- ▶ **Scapula:** Kürek kemiği,
- ▶ **Tibia:** Kaval kemiği,
- ▶ **Vertebrae:** Omur.

Astragalus: Aşık kemiği



Calcaneus: Topuk kemiği



Skull / Cranial: Kafatası

Elongated Head

Flat Head



COYOTE

Low and small sagittal crest

Flat



RED FOX

Long Canines

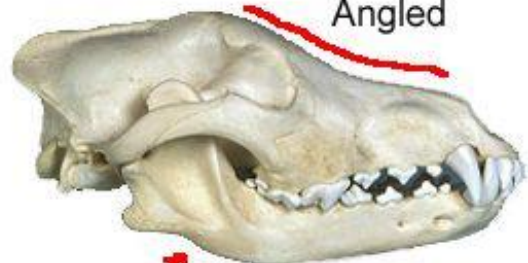
Large Eye Sockets

Sharply Angled
(Sometimes 90°)



DOMESTIC DOG

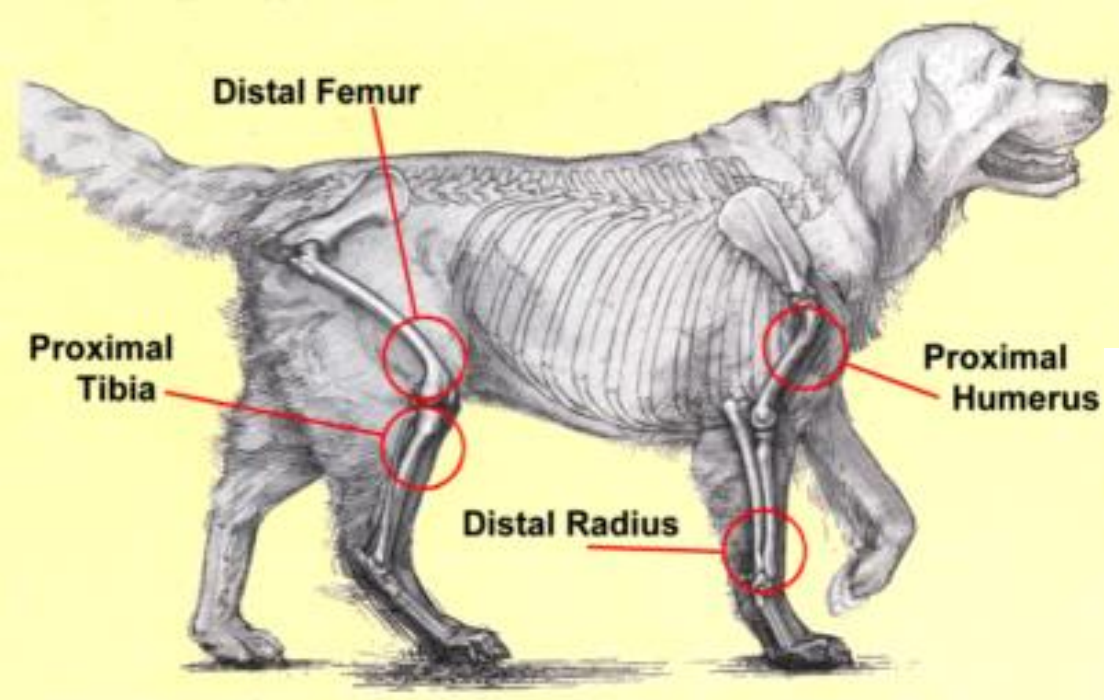
Angled



WOLF

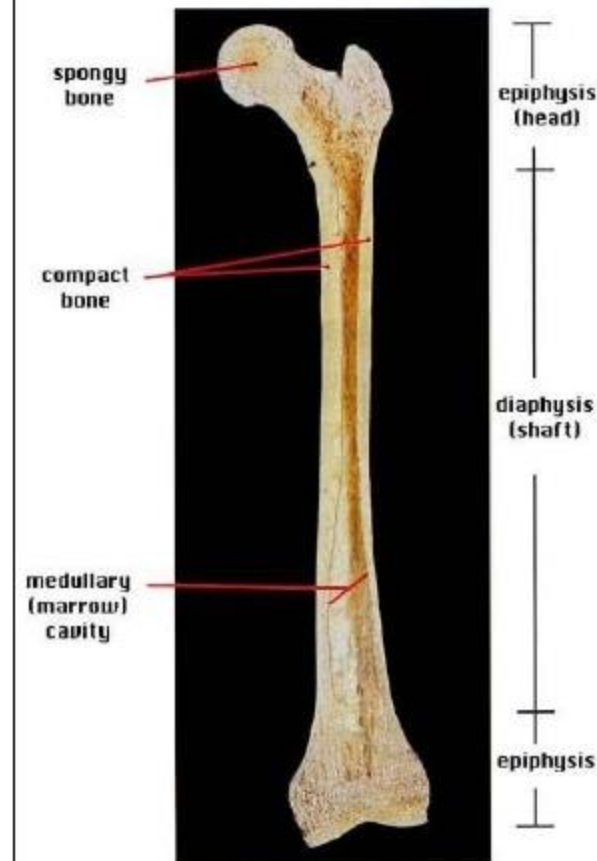
Broad-Boned



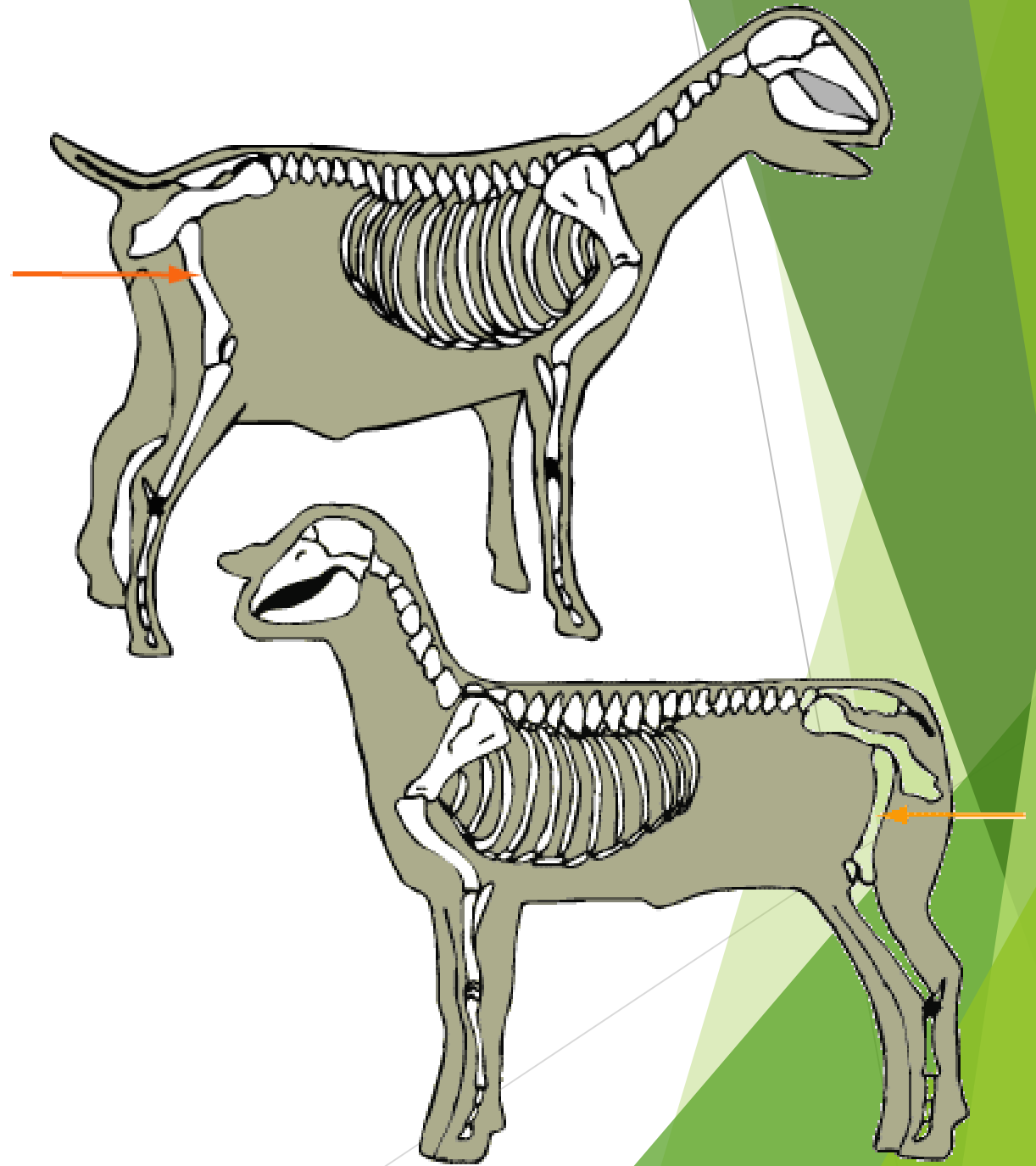


The *epiphyses* are named according to their location. The epiphysis closest to the body's center is the **proximal epiphysis**, while that located farthest away is the **distal epiphysis**.

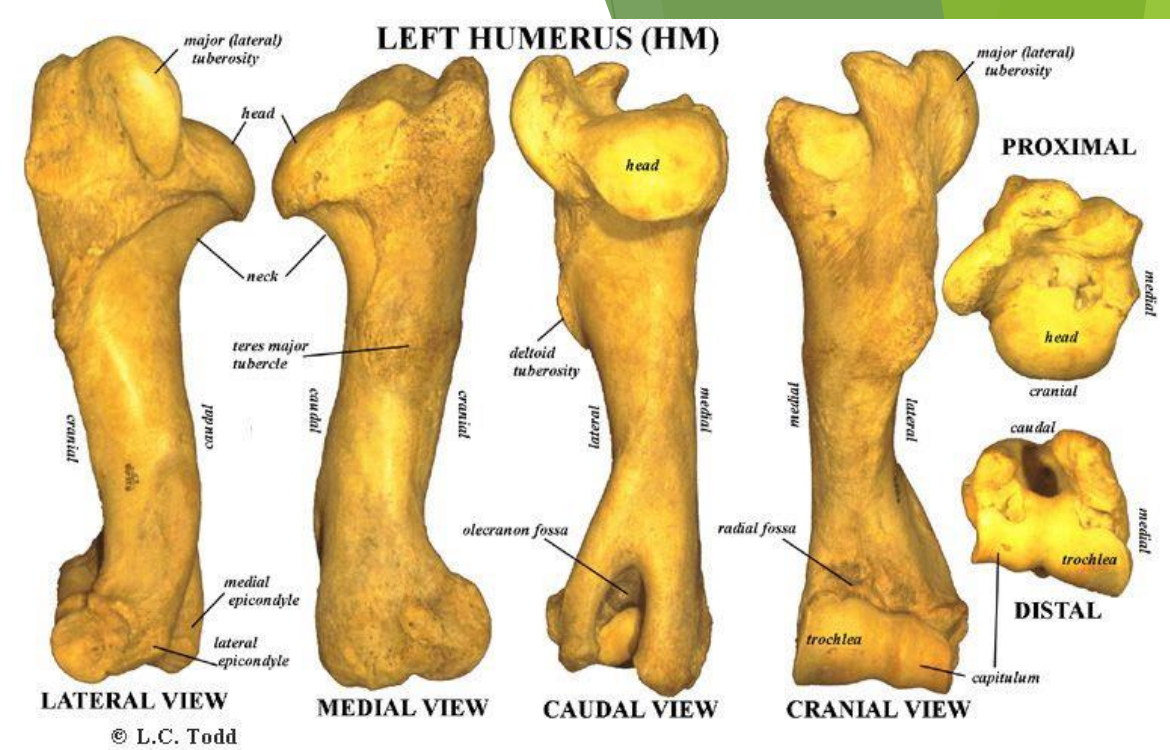
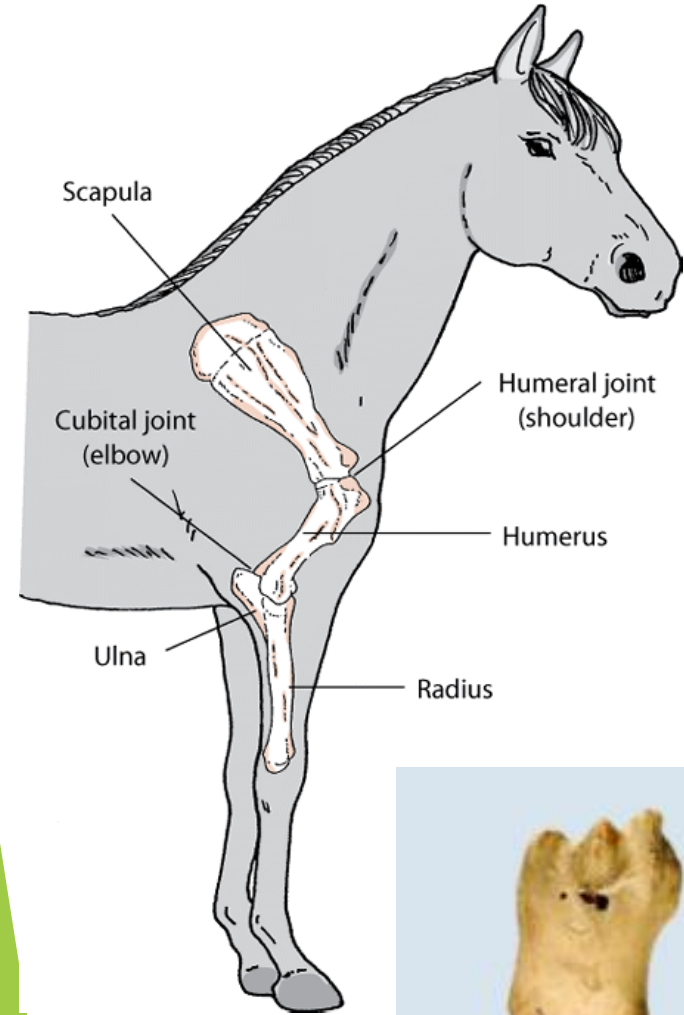
The long shaft between the epiphyses, called the *diaphysis*, is composed of mostly *compact bone* and is "hollow."



Femur: Uyluk kemiđi



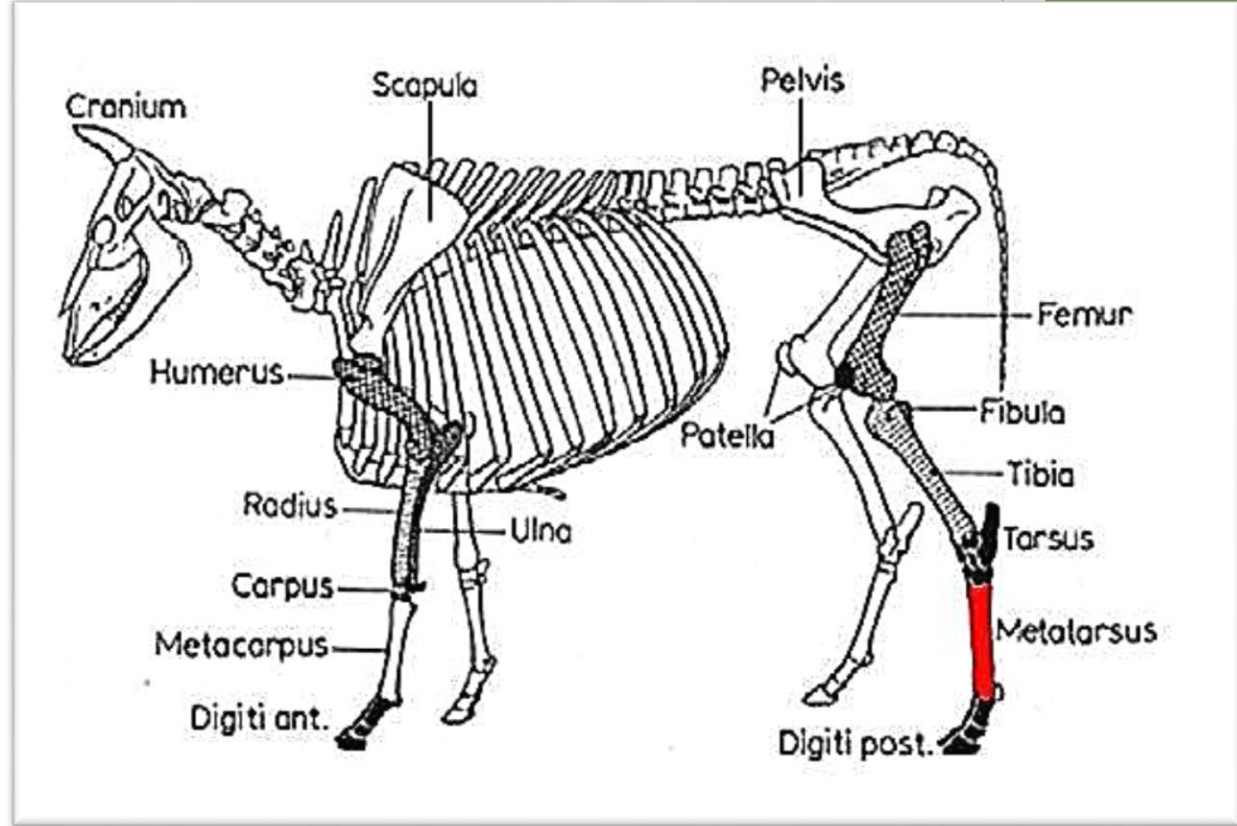
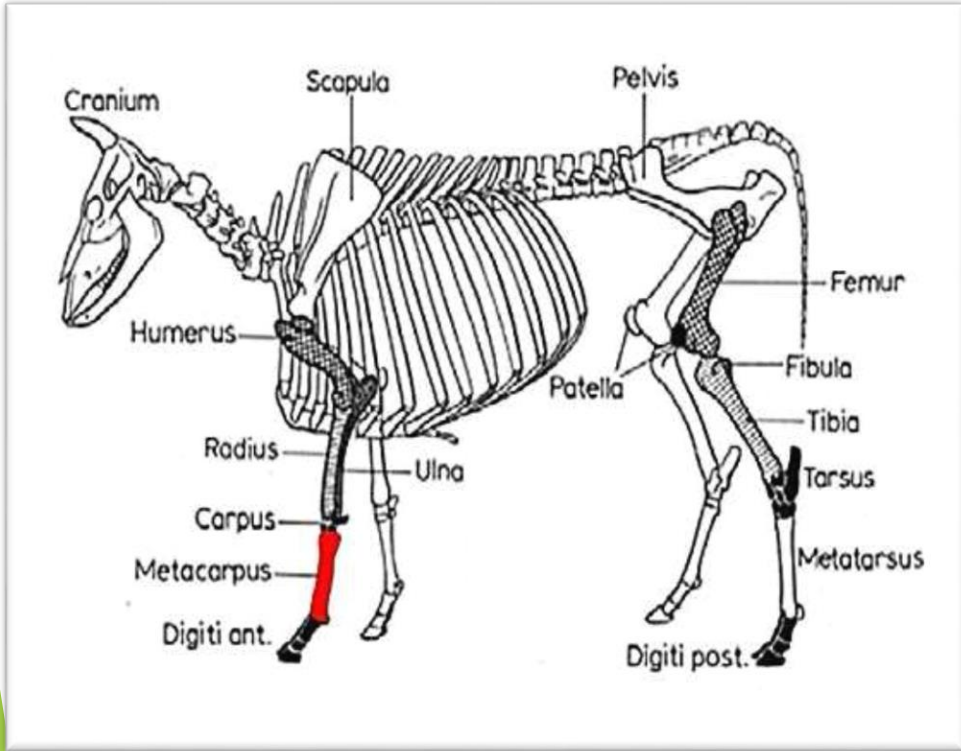
Humerus: Ön kol kemiği



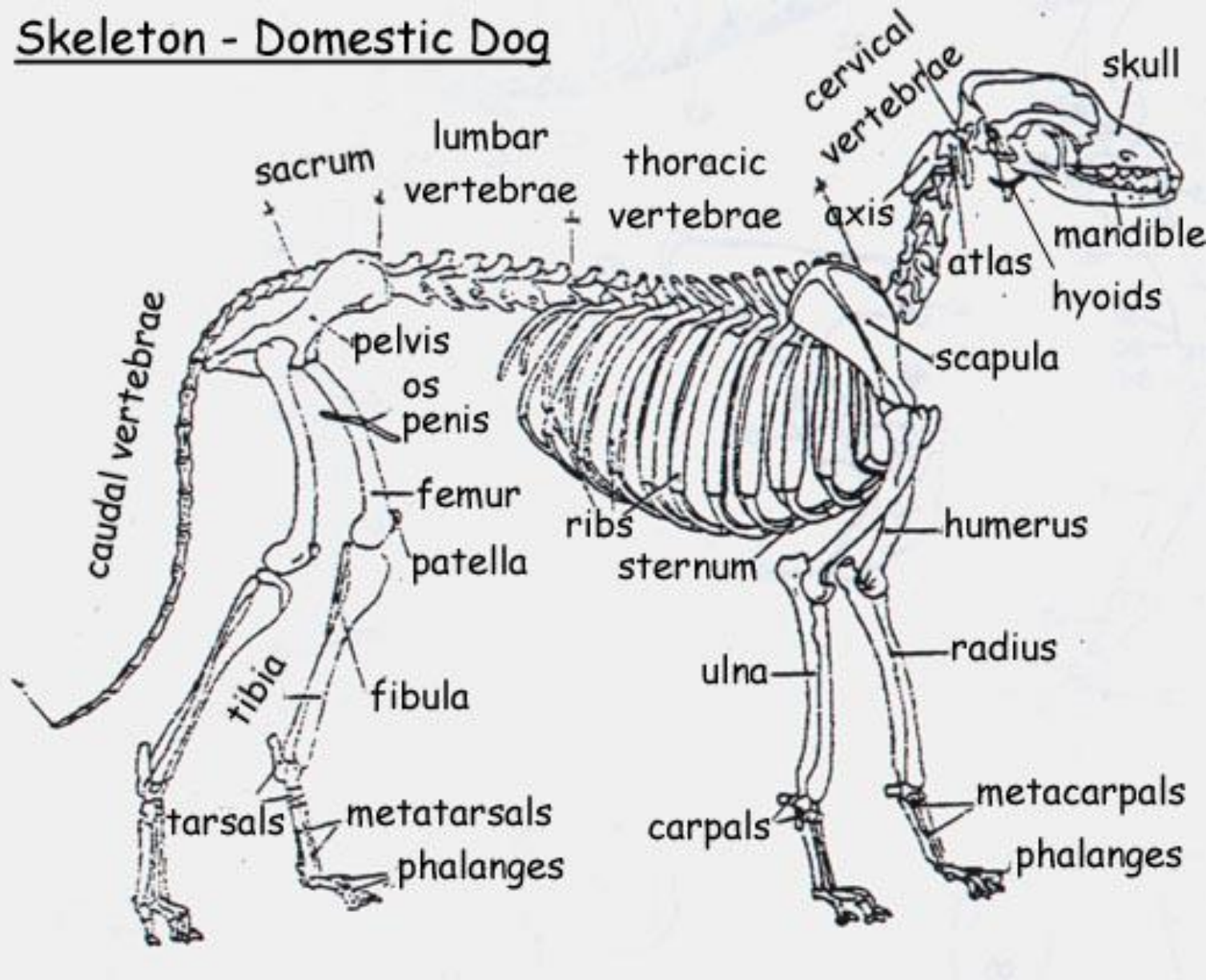
Matapodialis: Ön ayak ve arka ayak tarak kemikleri,

Matacarpus: Ön ayak tarak kemiği,

Matatarsus: Ayak tarak kemiği



Skeleton - Domestic Dog



Skeleton - Domestic Dog

