

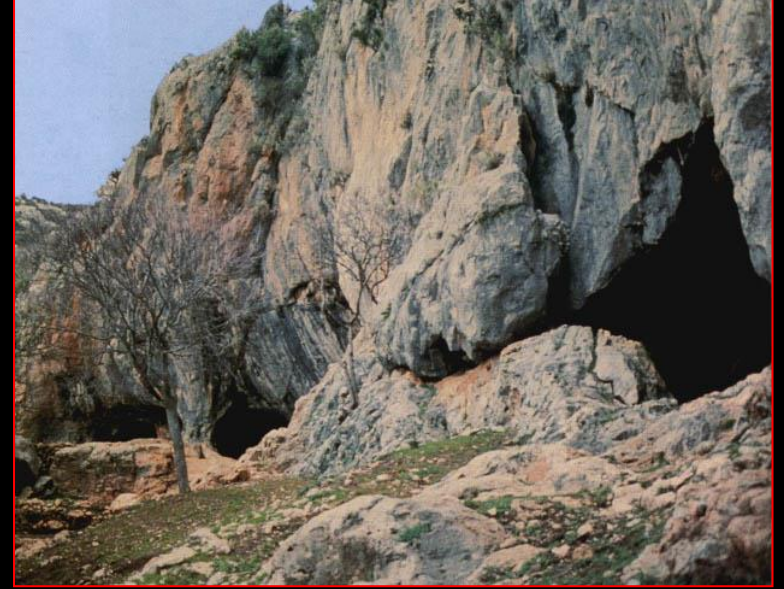
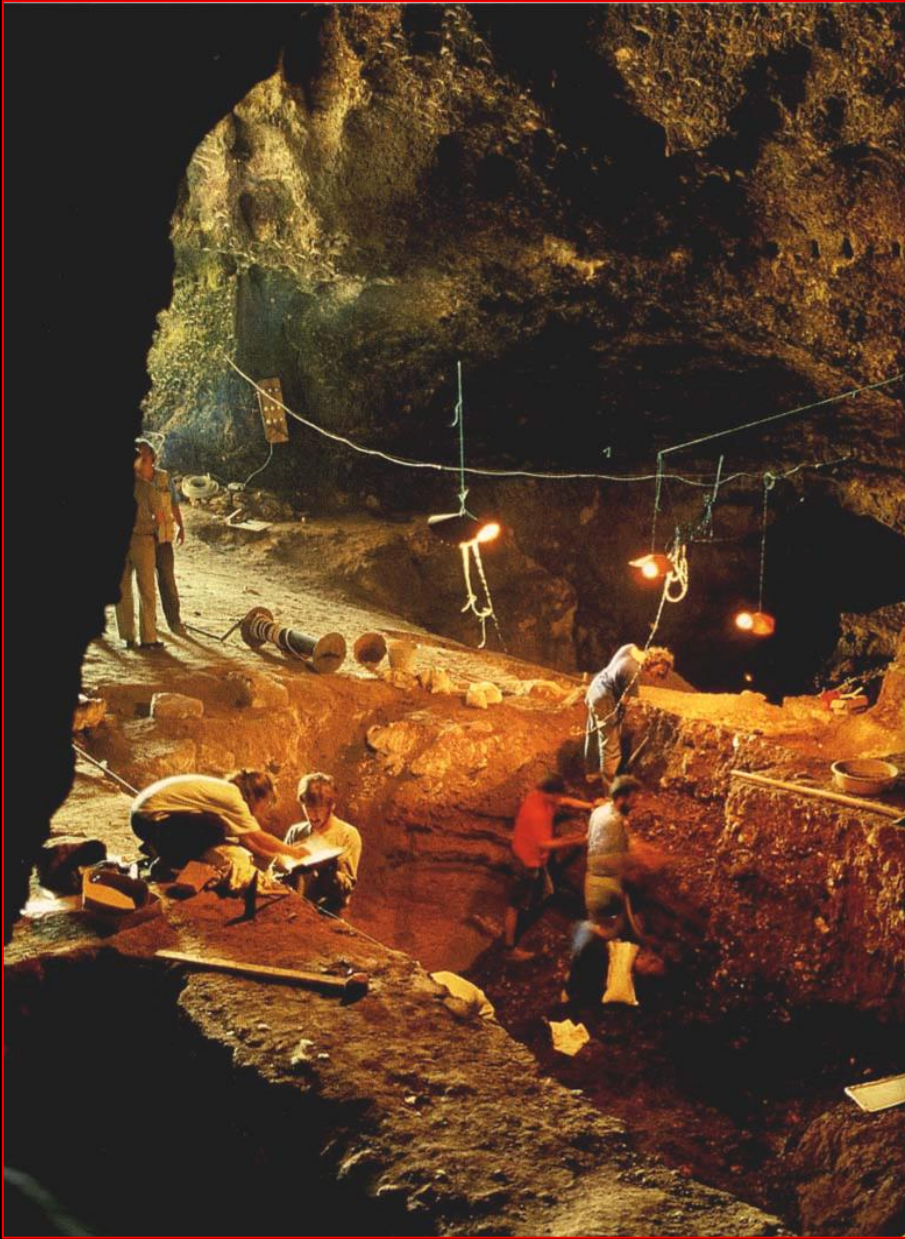
ANADOLU UYGARLIKLARI





Fosiller- ANKARA

225 -190 Milyon Yıl önce



Yarımburgaz Mağarası
İSTANBUL

Anadolu'da bazı antik şehirler





Göbeklitepe - ŞANLIURFA





Aslanlı Kabartma - Göbekli Tepe – ŞANLIURFA

YONTMA TAŞ DÖNEMİ

M.Ö.10.000 - 7.000



El Baltaları



Aletler

CİLALI TAŞ DÖNEMİ
M.Ö.7000 - 4500



Küçük Buluntular- Aşklı Höyük-AKSARAY

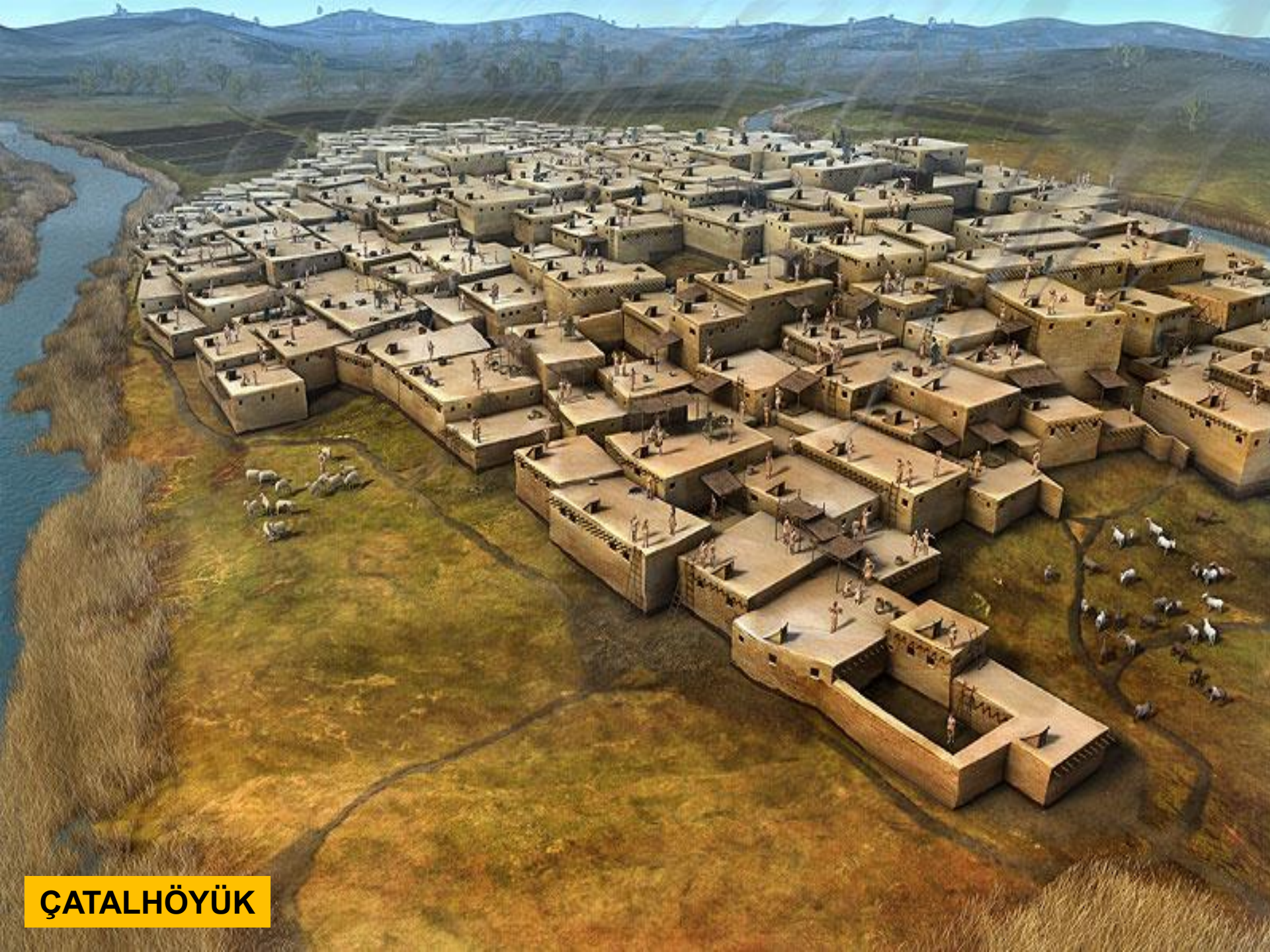


Çatalhöyük - KONYA

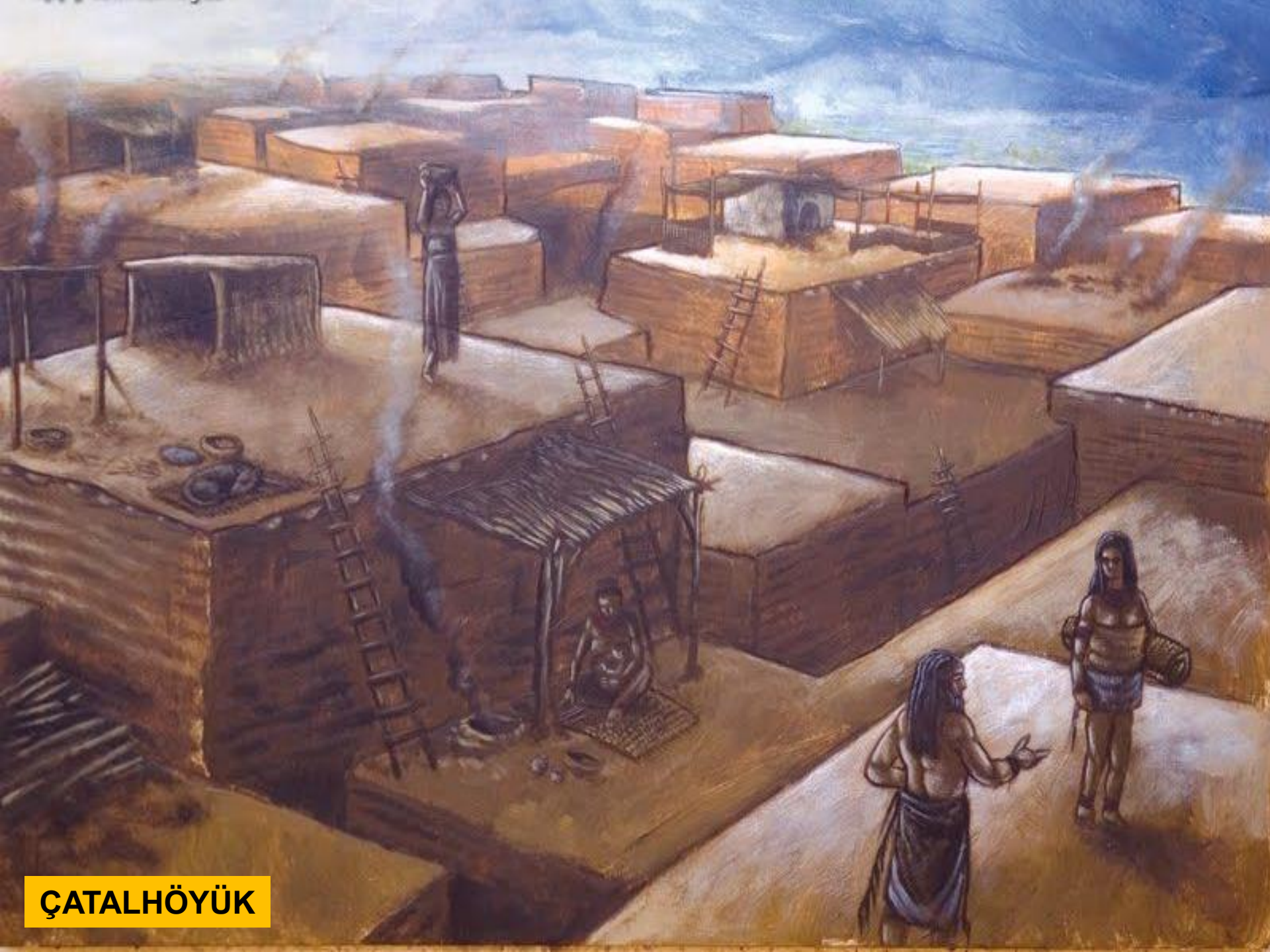
HASAN DAĞI

3268 m

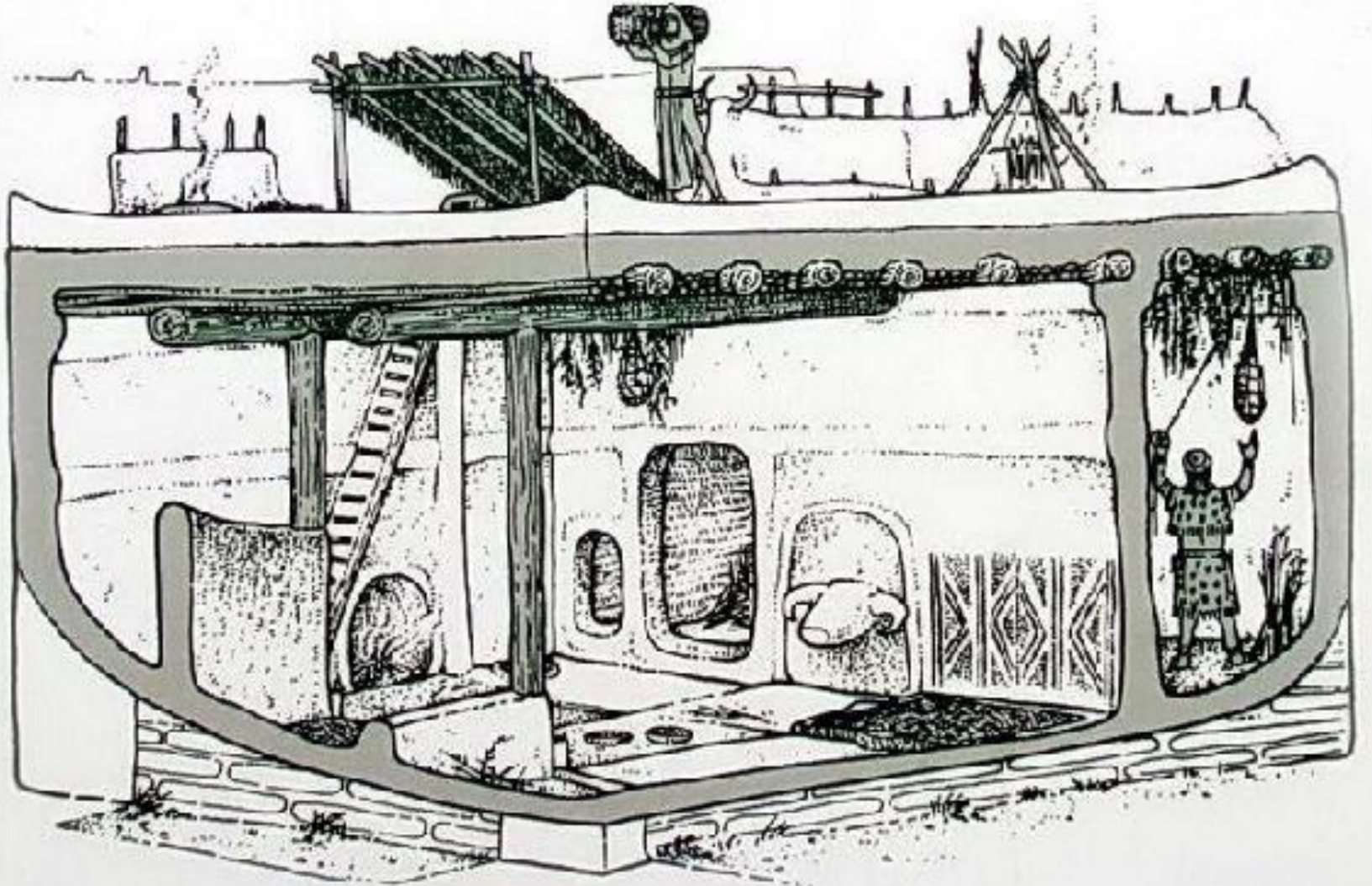




ÇATALHÖYÜK



ÇATALHÖYÜK



Çatalhöyük'te Bir Ev







Anatanrıça Heykelciđi
Çatalhöyük-KONYA



Figürinler, Çatalhöyük-KONYA



Seramik eserler - Fikirtepe - İSTANBUL





ÇATALHÖYÜK





Keskin kırılma özelliği kadar görsel çekiciliğiyle de obsidiyen ok ve mızrak uçları için en çok tercih edilen hammaddeydi. Son yıllarda kazılan Tepecik-Çiftlik kazısında çok sayıda, özenle yapılmış obsidiyen mızraklara rastlandı.

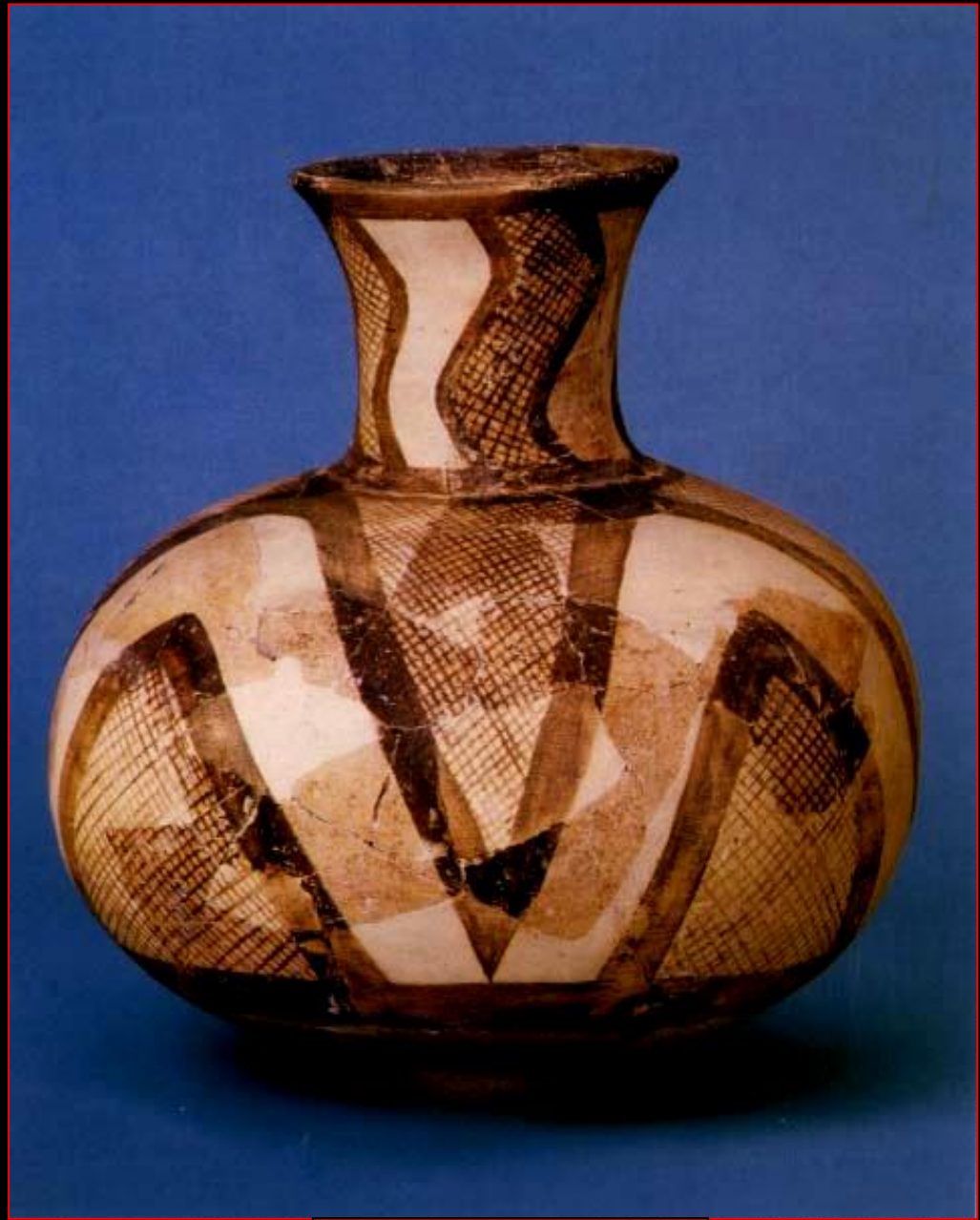
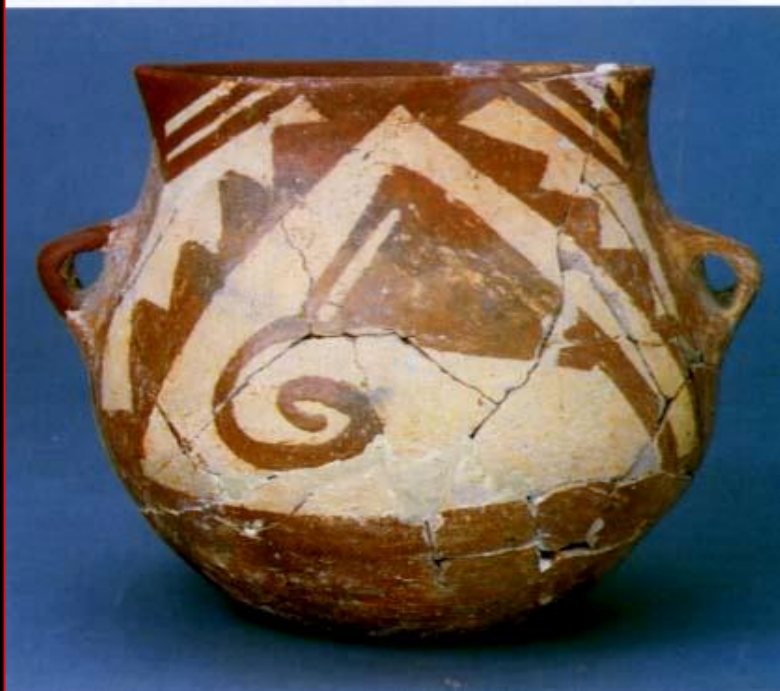


KALKOLİTİK DÖNEM
M.Ö.4500 - 3000



Asa başı, Bakır - Canhasan - KARAMAN





Hacılar-BURDUR



Domuztepe Höyüğü - KAHRAMANMARAŞ



Teleilat höyüğü -
SANLIURFA



Mezarlar



ANADOLU, M.Ö.3000-2000

ANADOLU MED. MÜZ.

Gümüş kaplı
tunç boğa /
Alacahöyük



ANADOLU MED. MÜZ.

Tunç-altın
çekiç balta /
Alacahöyük



Güneş kursu /
Alacahöyük



ANADOLU MED. MÜZ.

Tunç çekiç / Alacahöyük



F. ÜZENEK

Altın kabzalı demir hançer / Alacahöyük



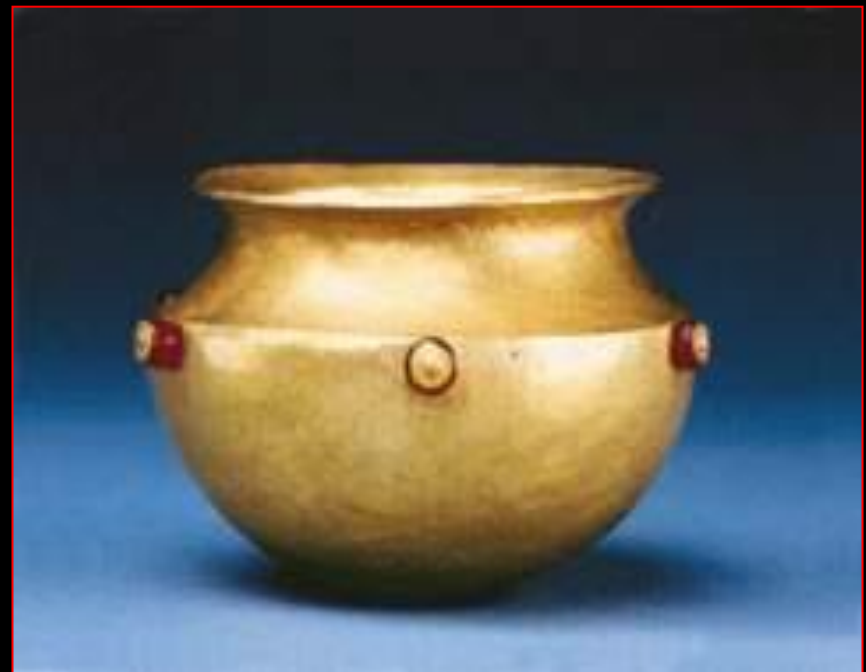
Bronz ve Gümüş Heykelcikler Alacahöyük-ÇORUM



Törensel Semboller , Alacahöyük - ÇORUM









TROIA

ANKYRA

TROIA

M.Ö.3000- M.S 85

Troy

Nine periods in the settlement-hill of Hisarlık

Ilios
Ilium
Ilium
Truva

Troy today

- Early Bronze Age
- Late Bronze Age
- Classical Antiquity



Troy IX
(85 B.C.–A.D. 500)



Cutaway diagram of the nine periods

Troy VIII
(8th c.–85 B.C.)



Troy VII
(1250–1000 B.C.)



Homeric Ilios

Troy VI
(1800–1250 B.C.)



Troy V
(1900–1800 B.C.)



Troy IV
(2100–1900 B.C.)



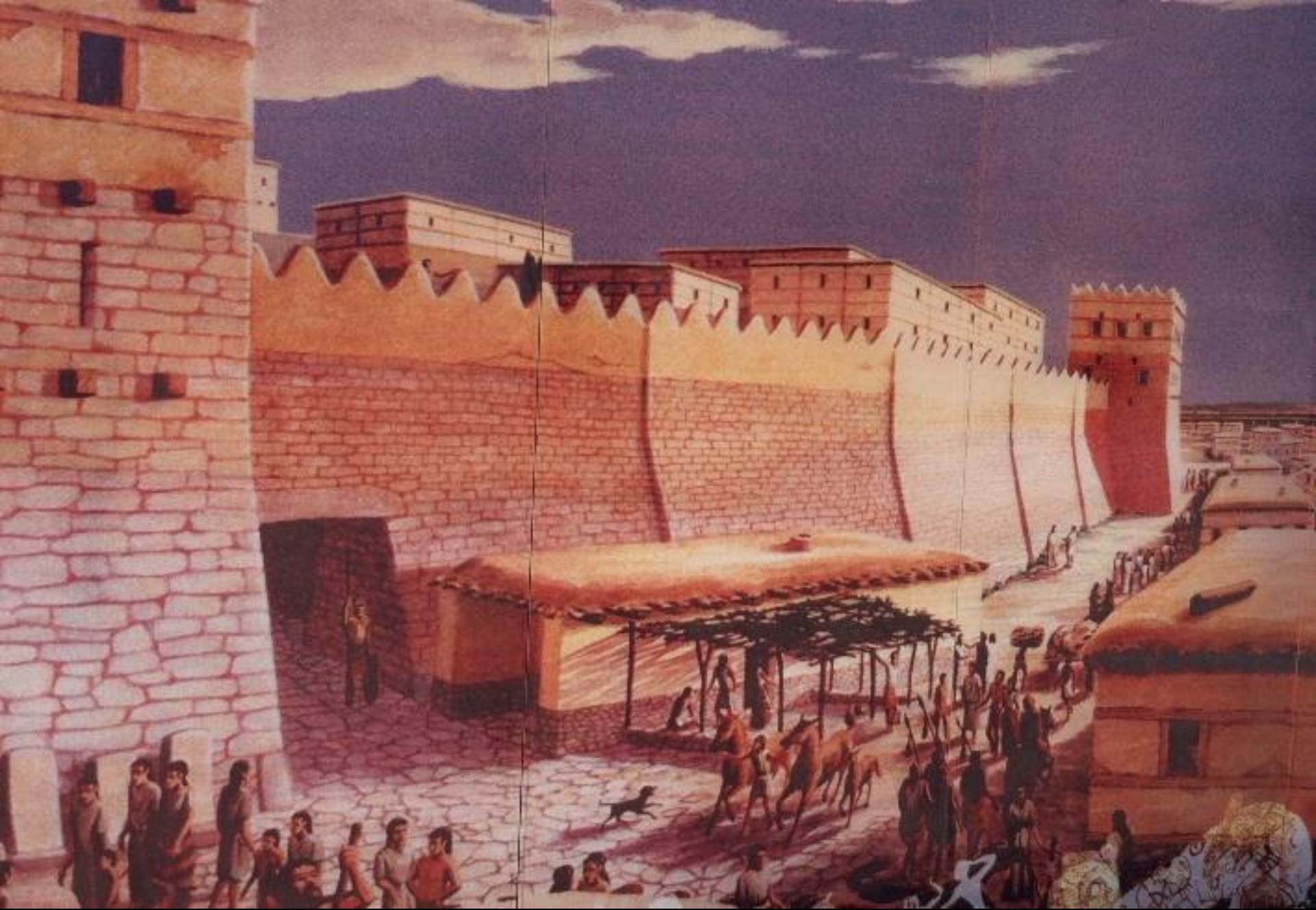
Troy III
(2400–2100 B.C.)



Troy II
(2500–2400 B.C.)



Illustration:
Lloyd K. Townsend

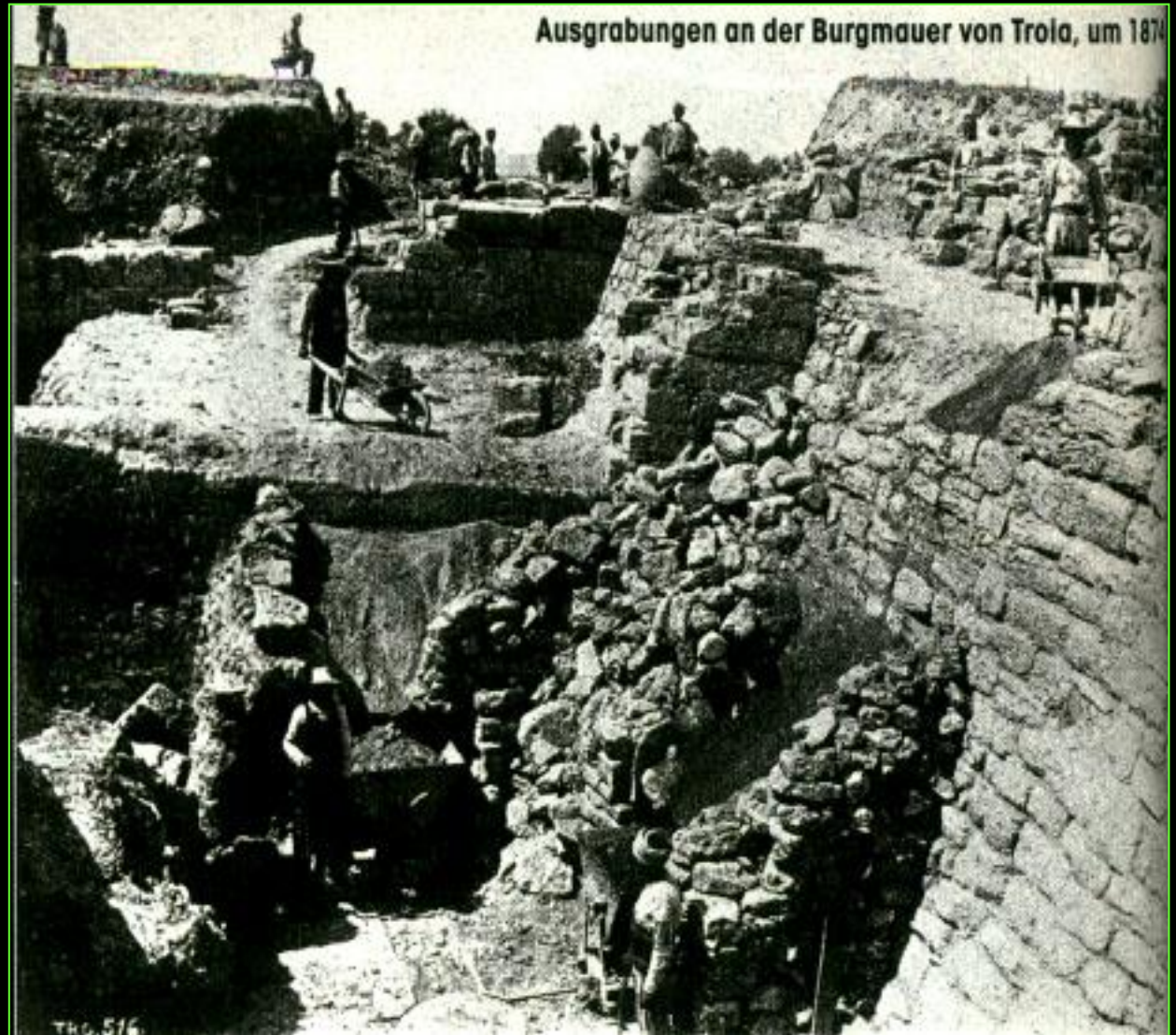


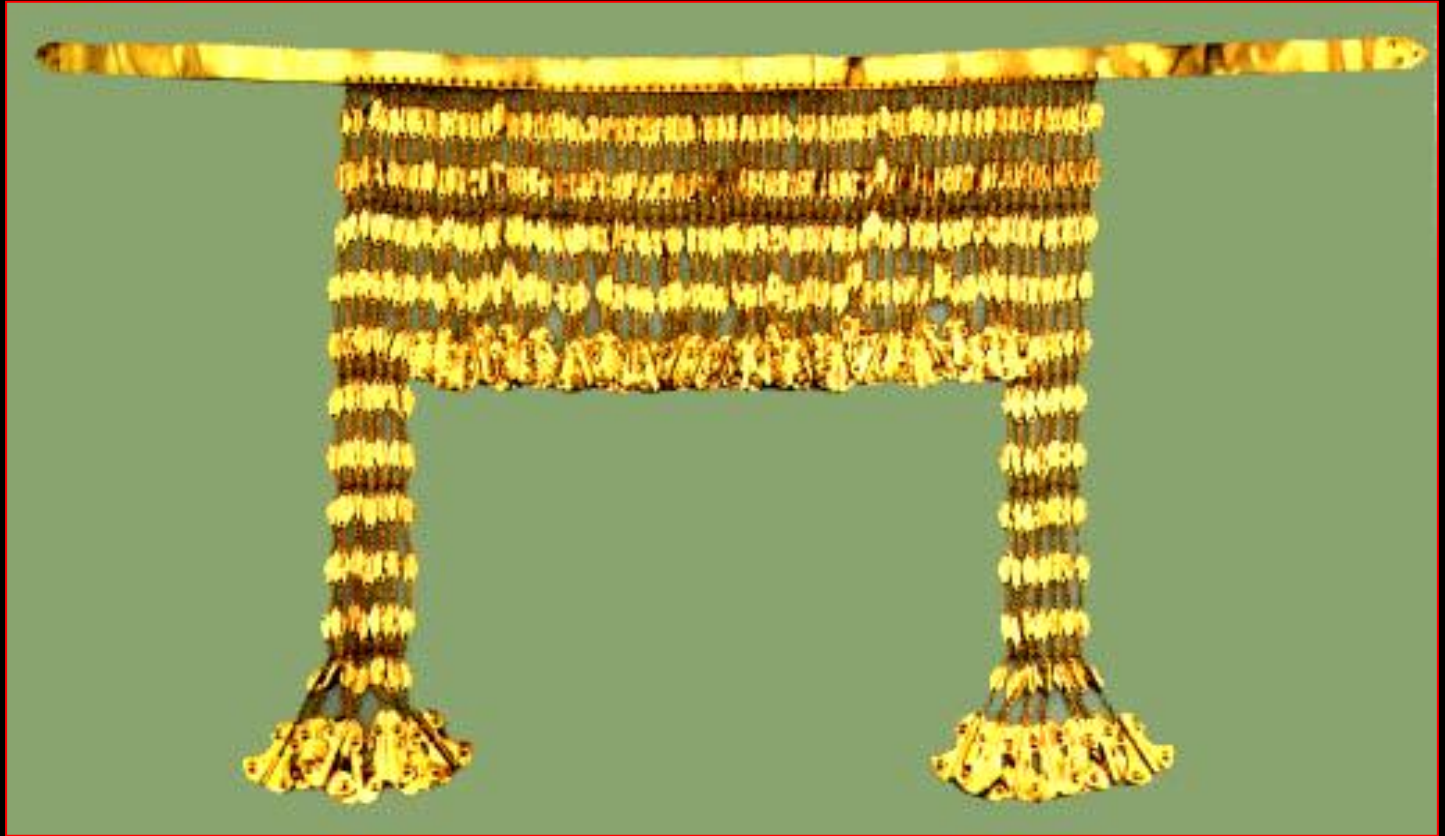
TROYA ŐEHRI



ilk harabelerin
yığı.

1871 – 1890 Schlieman'in Kazısı







27. QM Tufpa Altin Suv Kaba



28. QM Spenli Altin Tok



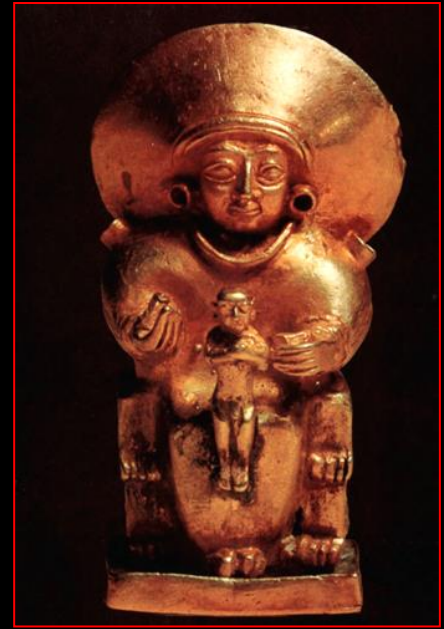


İdoller, Alabaster , Kültepe - KAYSERİ



İdol'ler





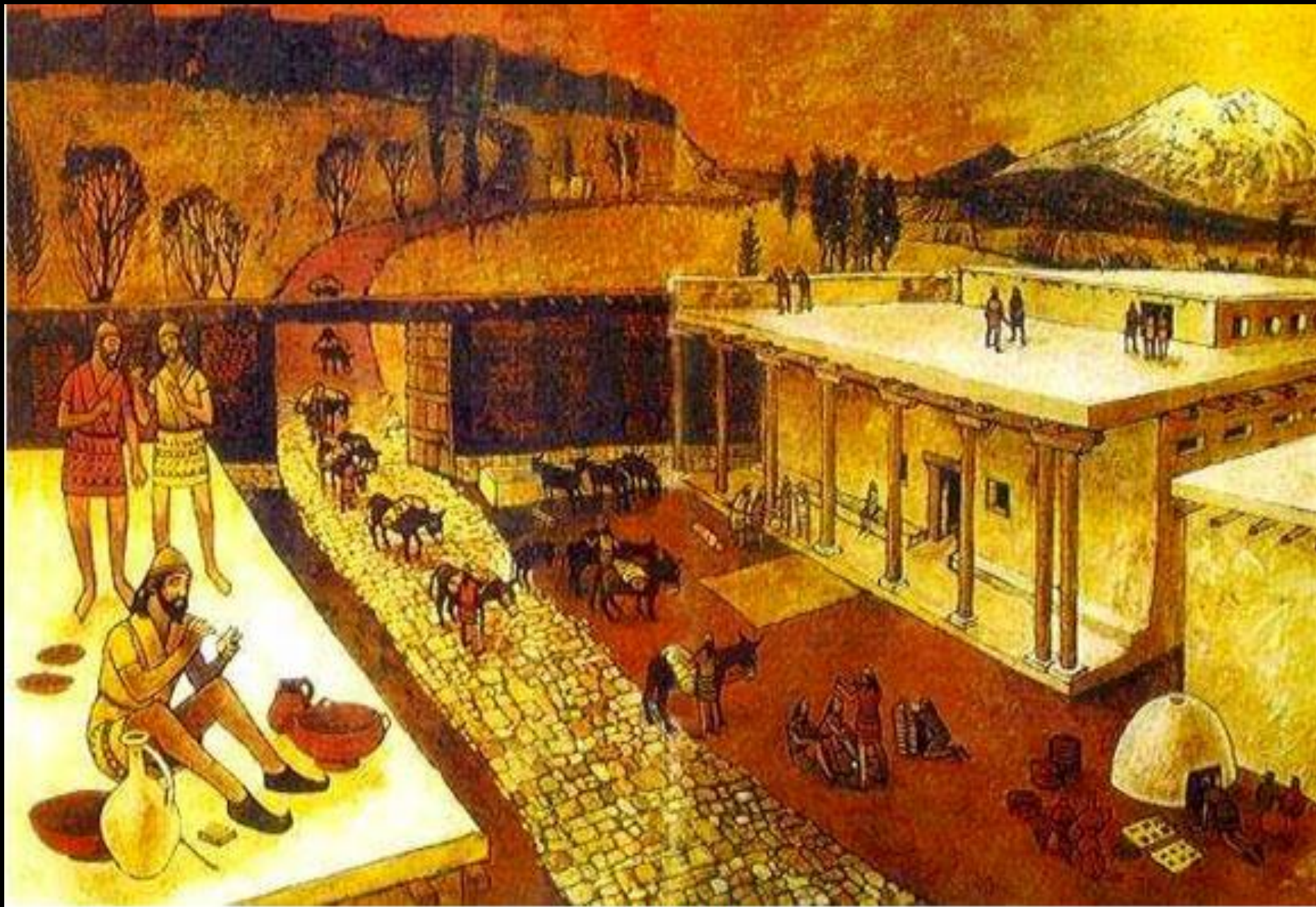


ANADOLU – M.Ö.2.Binyıl



Kültepe / Kaniş,
E.GAL A-ni-ta ru-ba-im =
Kral Anitta'nın Sarayı,

Bronz ,Hançer

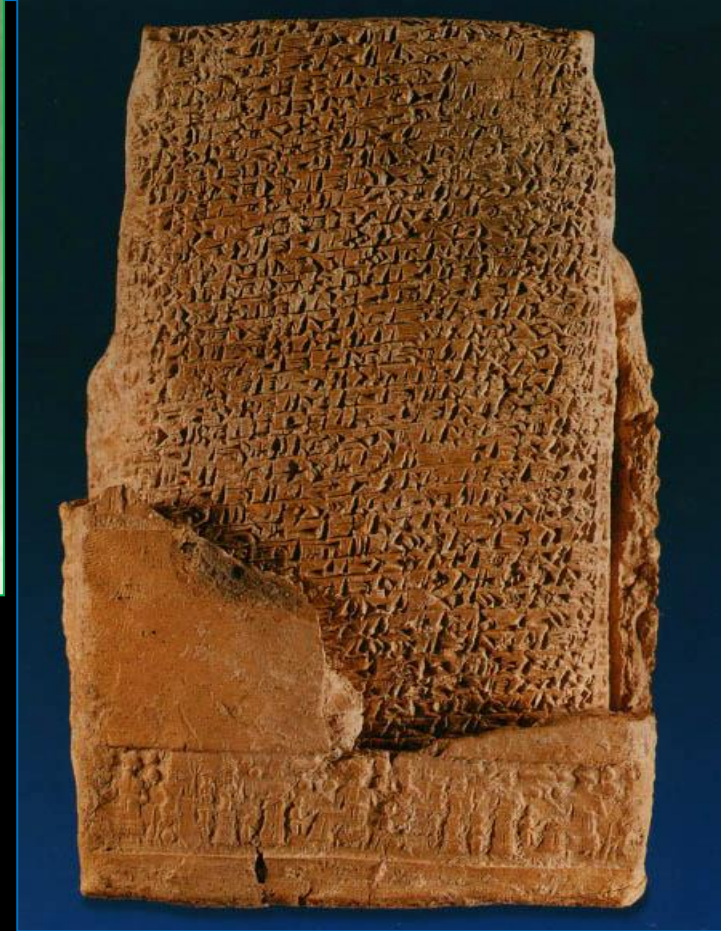


Kültepe'de Hayat



Silindir Mühür

Çivi Yazılı Tablet





Vazo, Kaya Kristali



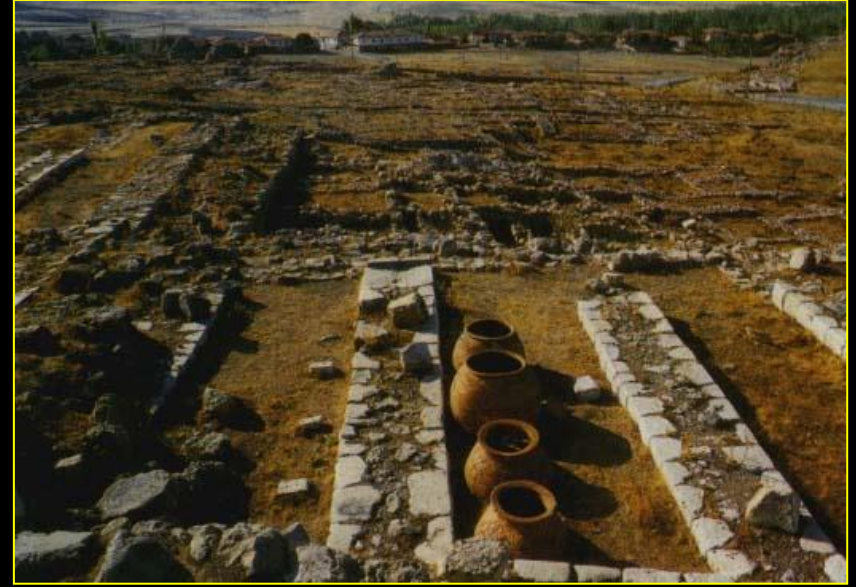
Vazo, Obsidien

M.Ö.1900 -1750

ANADOLU – M.Ö. 1750



Boğazköy (URU Ha-at-tu-şa)



HİTİTLER
M.Ö.1750 – 1200



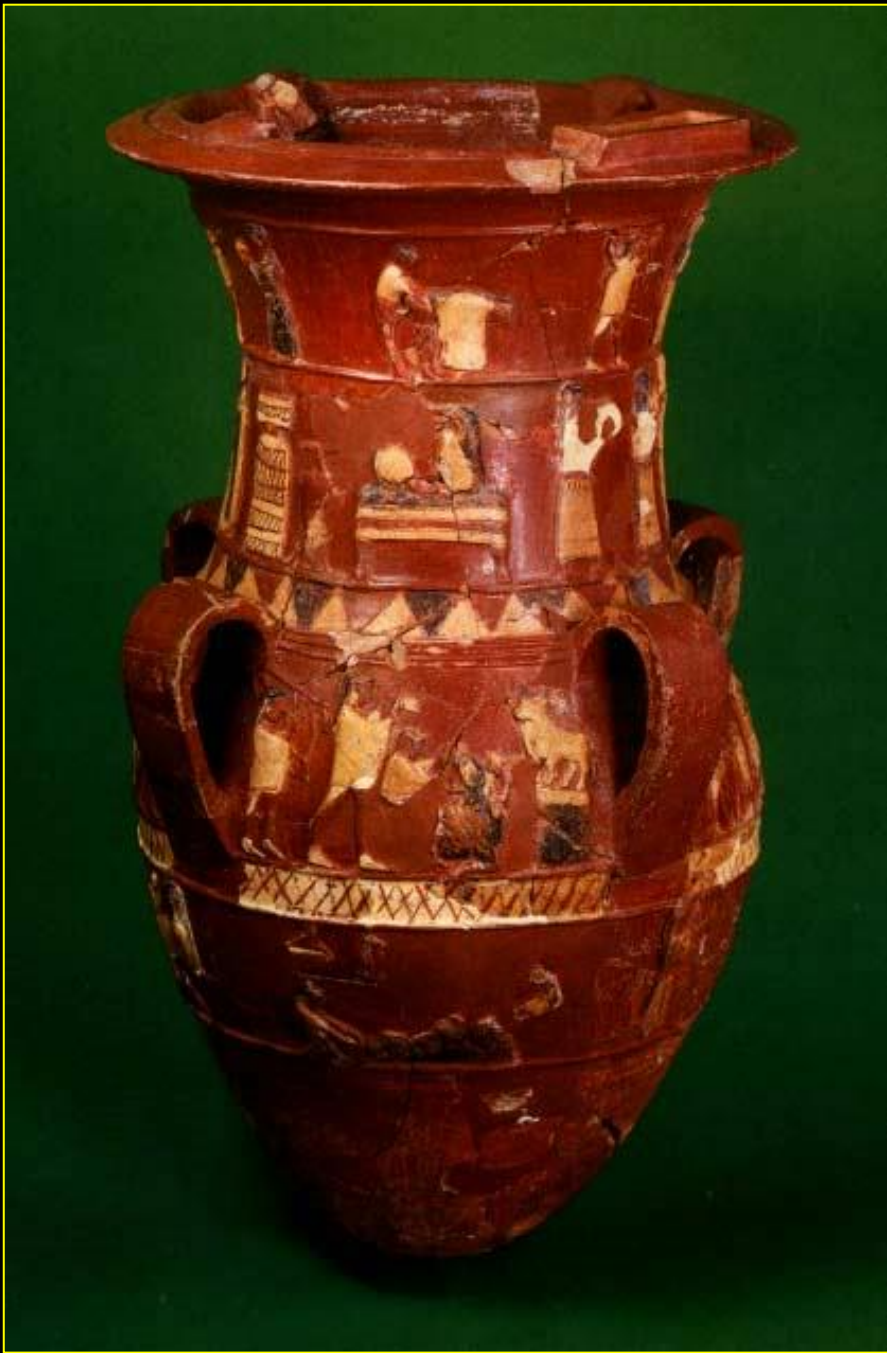






Bir bayram ritüeli
rekonstrüksyonu

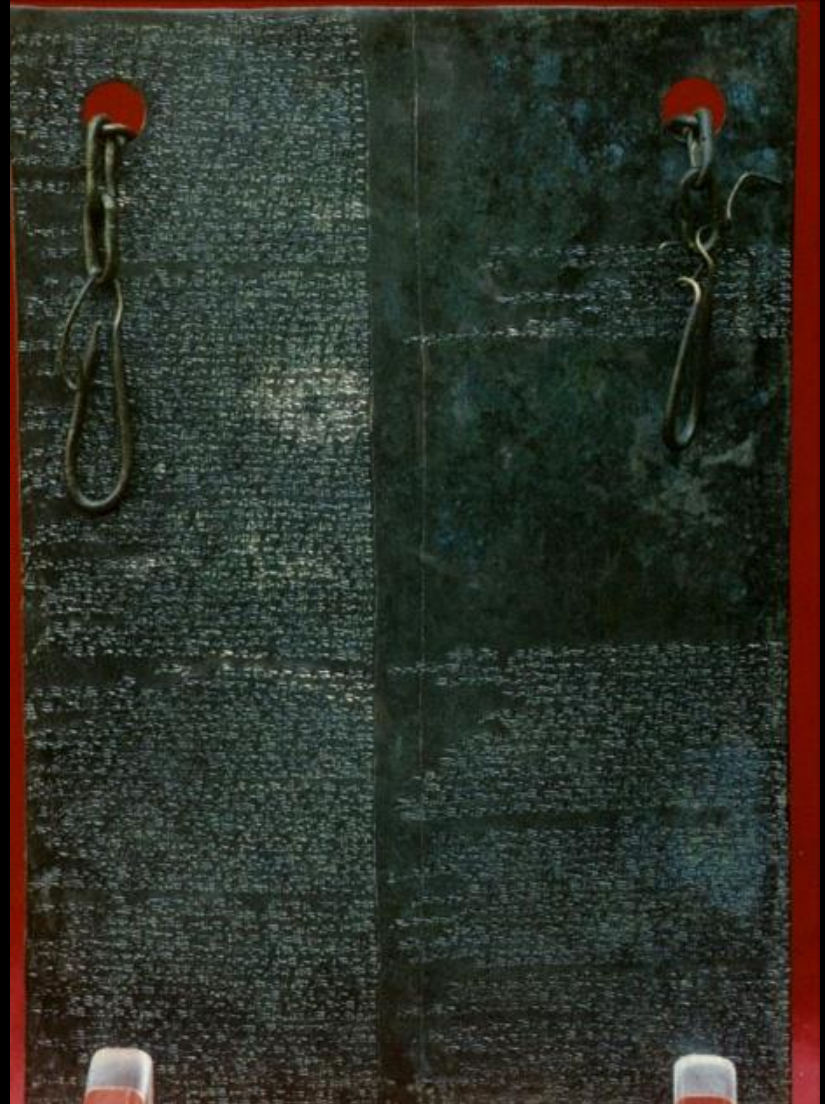
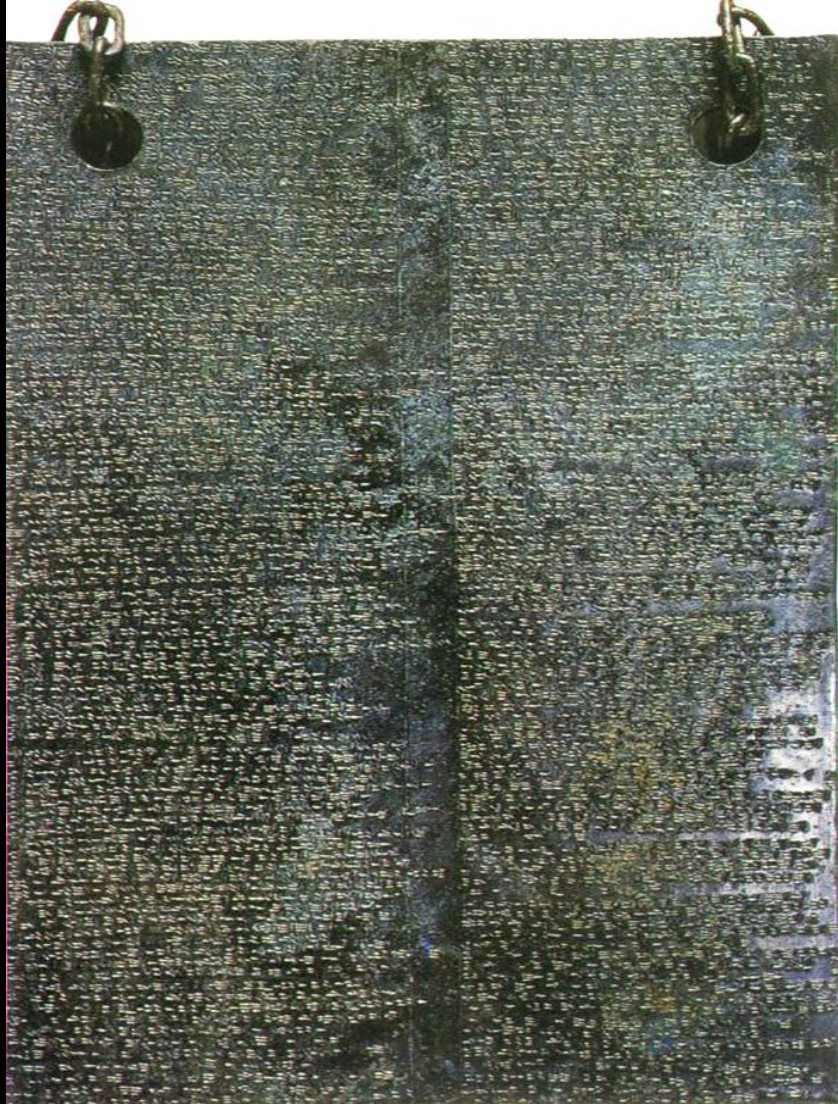




**KADEŞ ANTLAŞMASI, (II.Ramses - III.Hattuşili)
M.Ö.1285 – 1270**

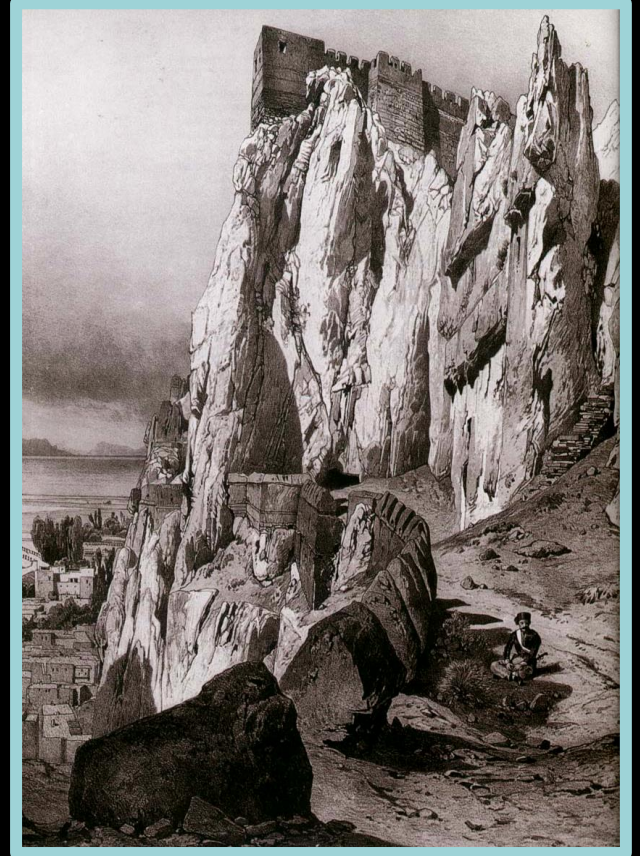
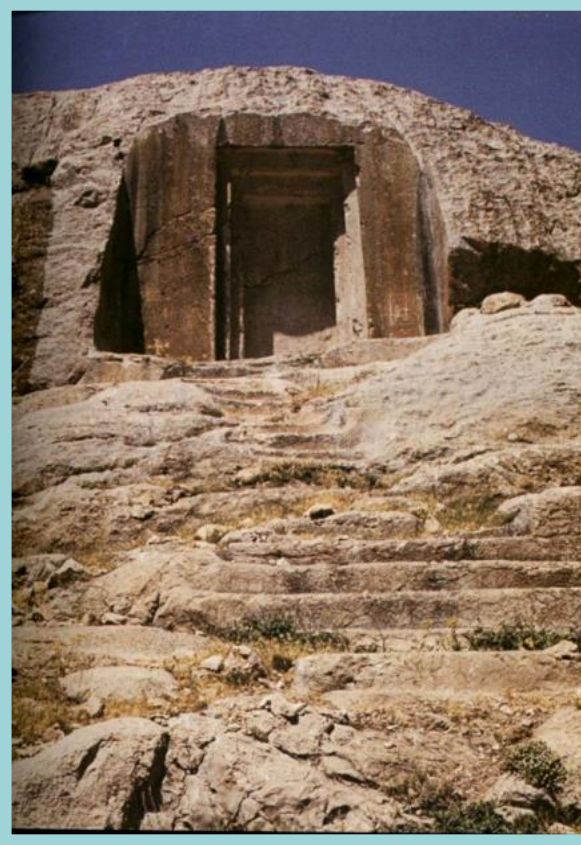
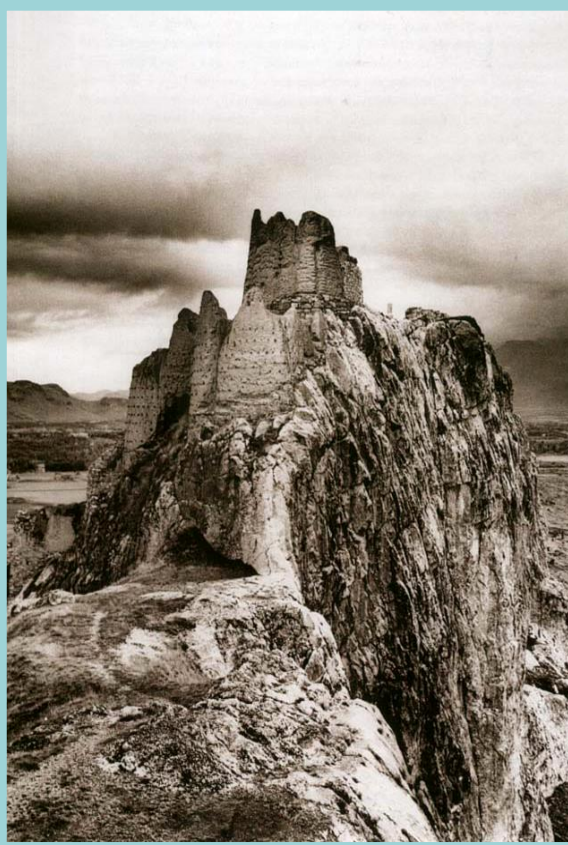


Tablet, Bronz- M.Ö. 1240.





M.Ö.1.Binyıl



URARTU'LAR
M.Ö.9-8.Yüzyıl



Van Kalesi







FRIG'LER
M.Ö.900 – 695

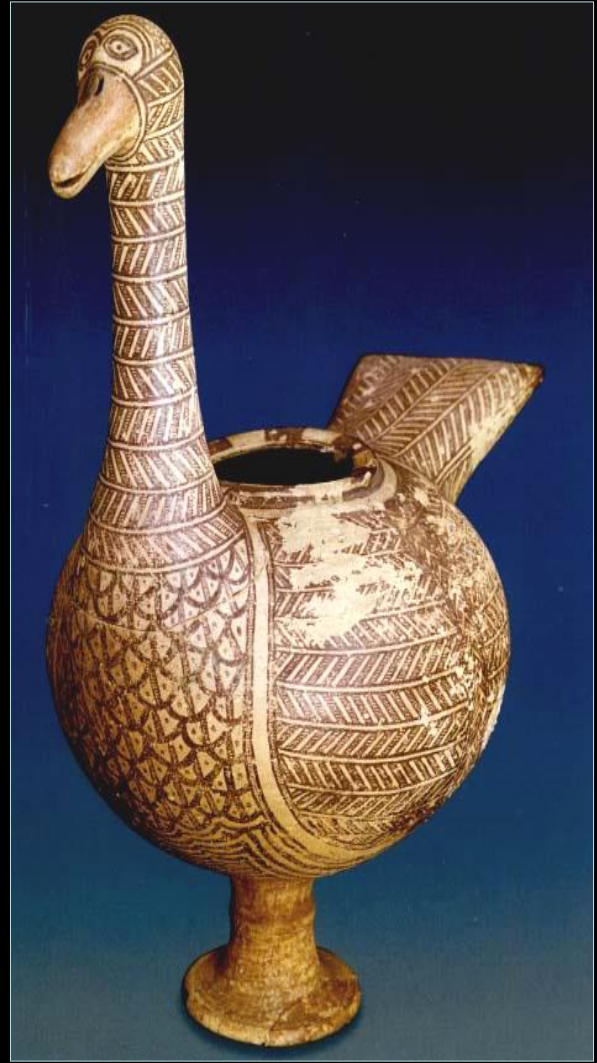
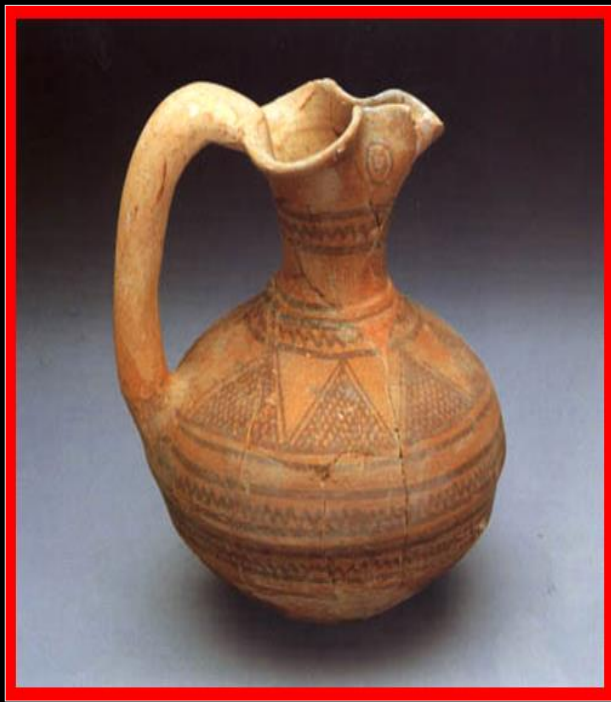
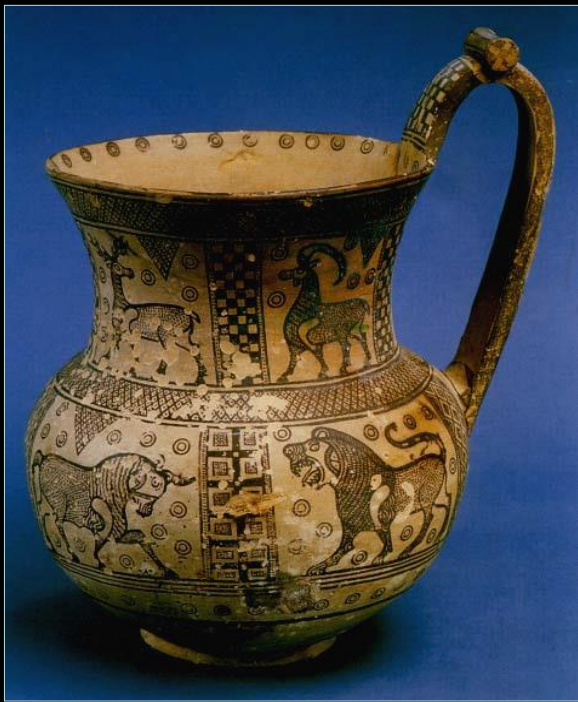




GORDIOS TMLS



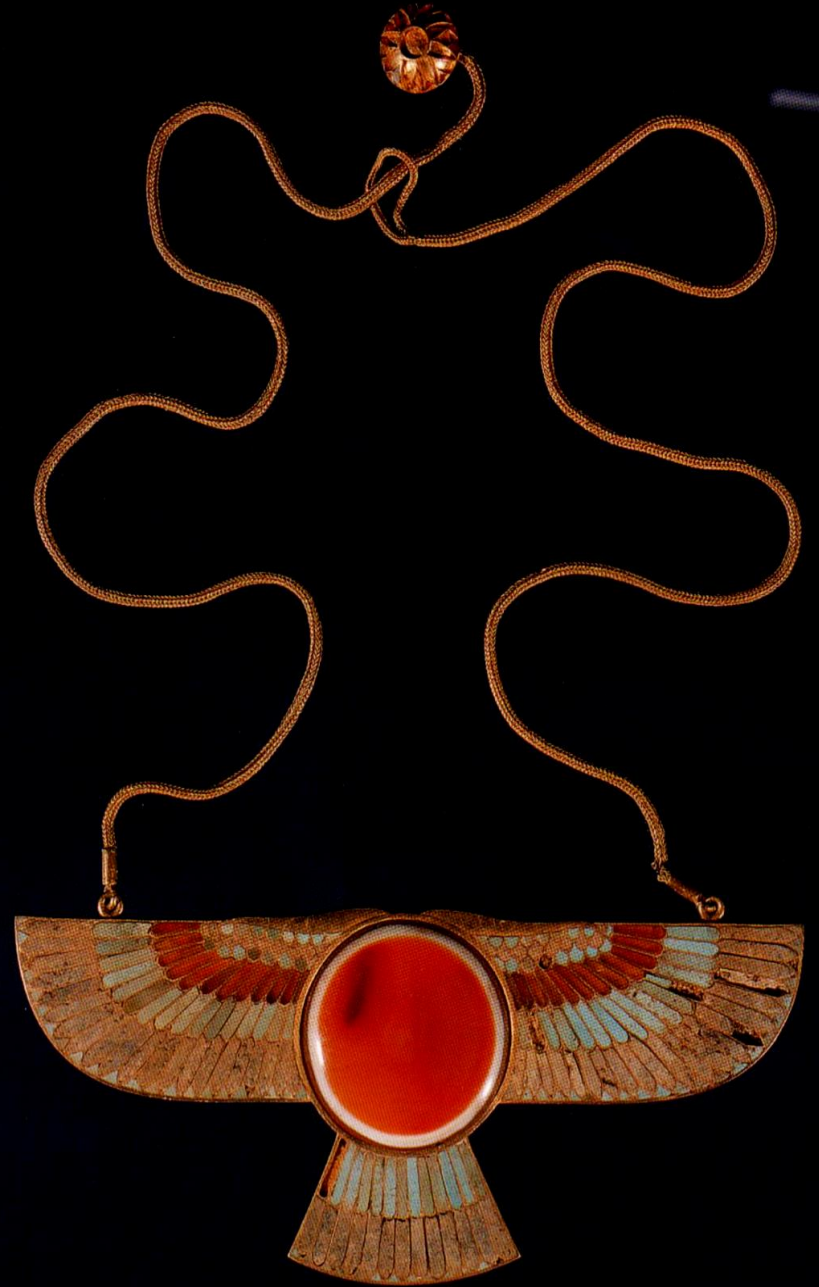
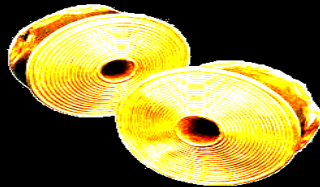
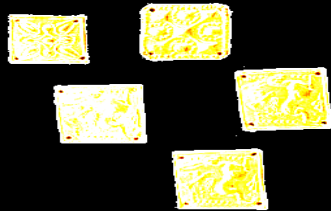
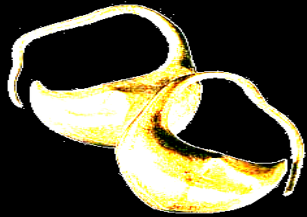
Situla'lar





LİDYA'LILAR
M.Ö.700-300







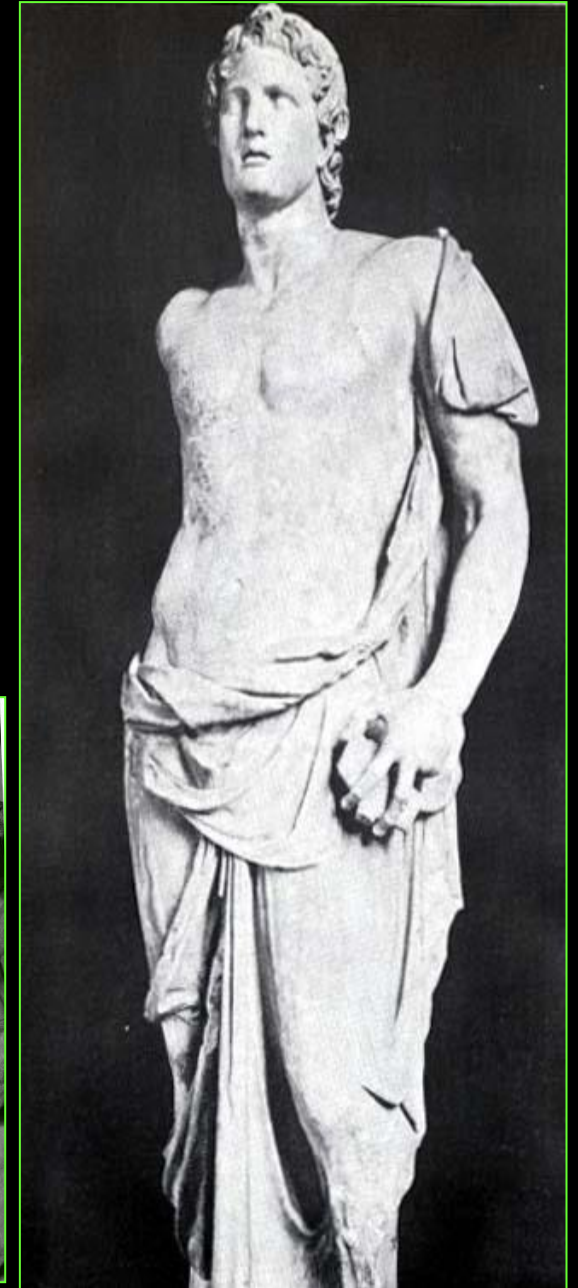
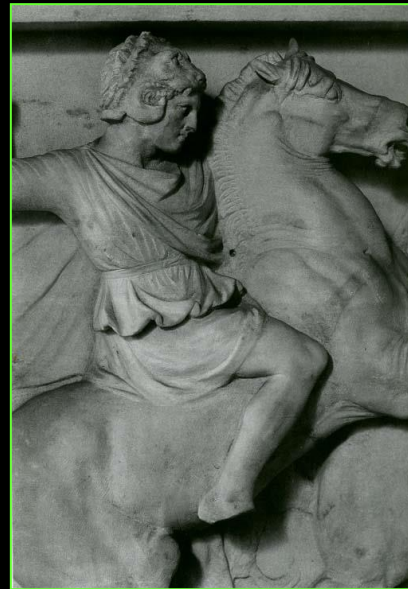


HELLENİSTİK DÖNEM

M.Ö.330-30



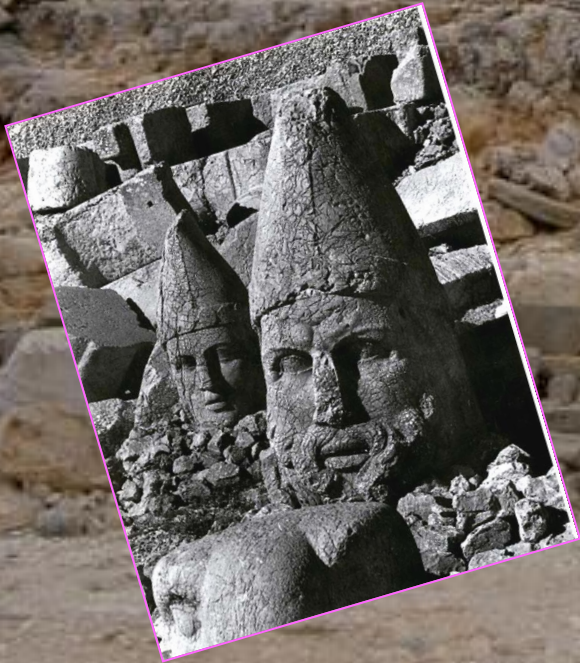
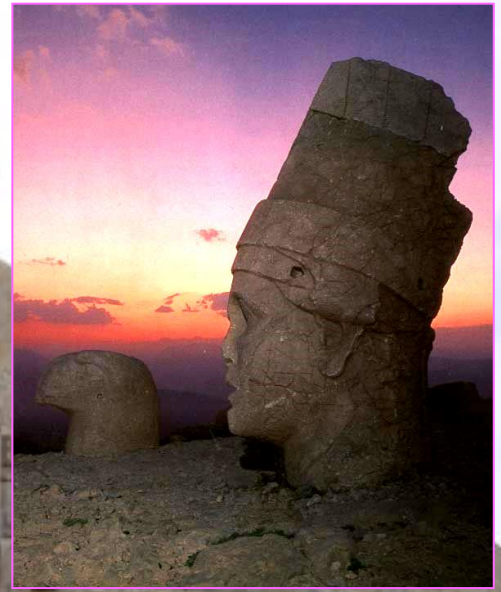
Büyük İskender

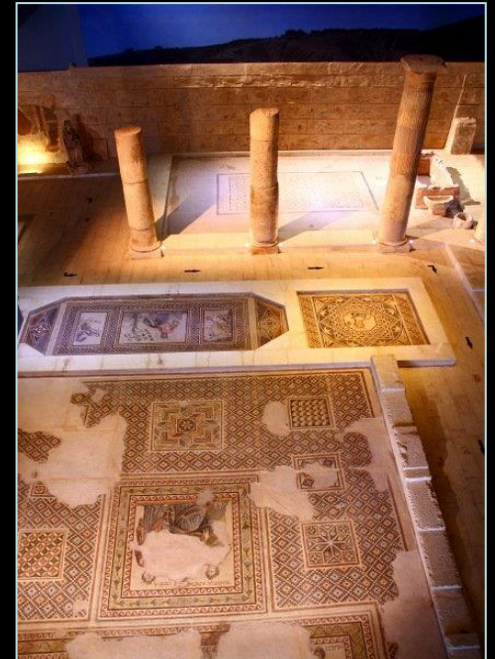






KOMMAGENE UYGARLIĐI M.Ö.100 - M.S.72





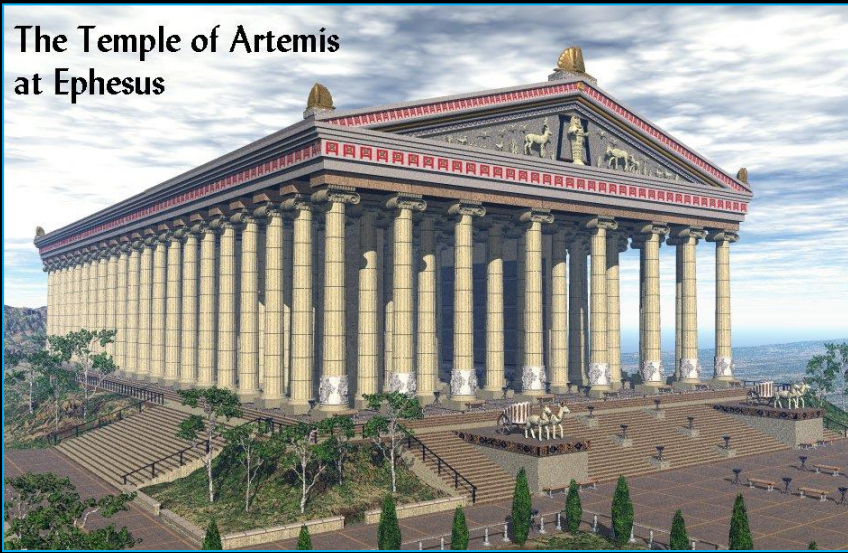






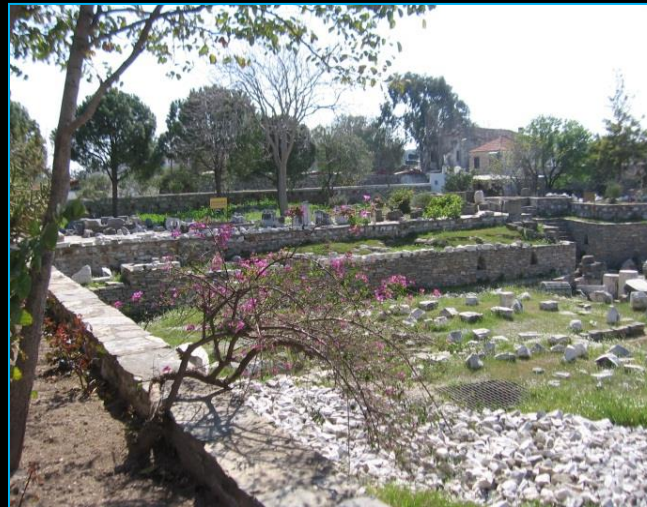
Roma Hamamı Açık hava Müzesi, Ulus - ANKARA

The Temple of Artemis
at Ephesus



ARTEMİS TAPINAĞI

HALİKARNAS MAUSOLEUM



EFES

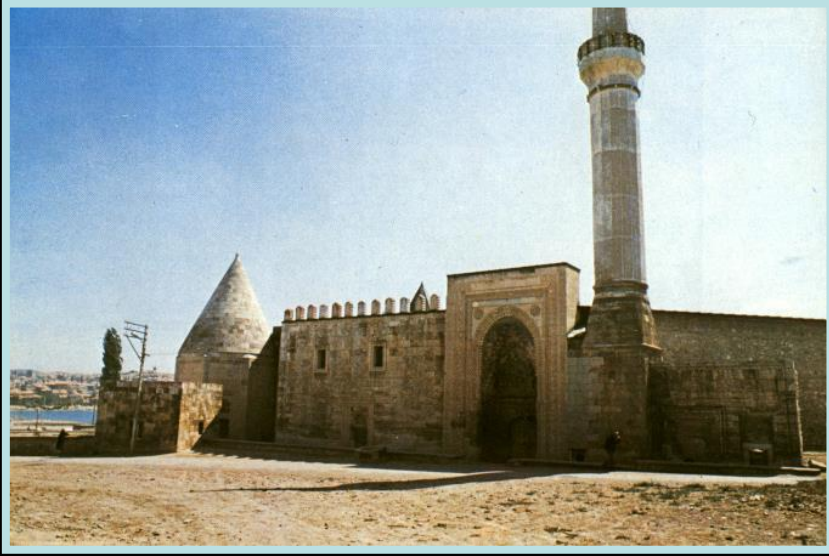


Celcius Kitaplığı

Asya Konsülü Julius Celsius Palemaeanus adına,
ođlu Julius Aquila tarafından yaptırılmıştır. MS 1-2.yüzyıl

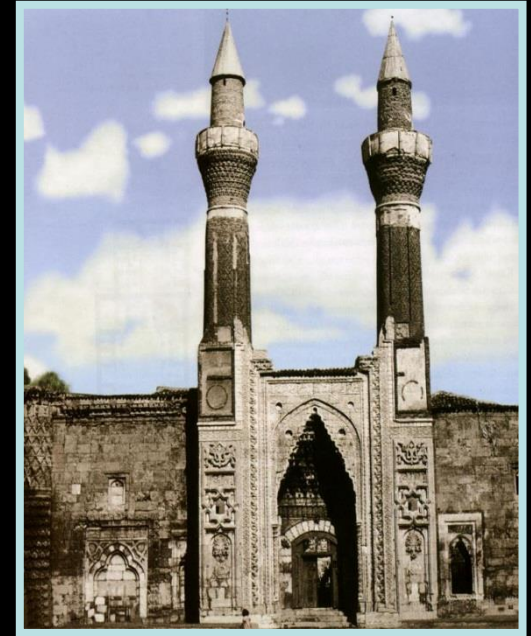






Eşrefoğlu Camii,
BEYŞEHİR -1296.

SELÇUKLU DEVLETİ
1071-1299



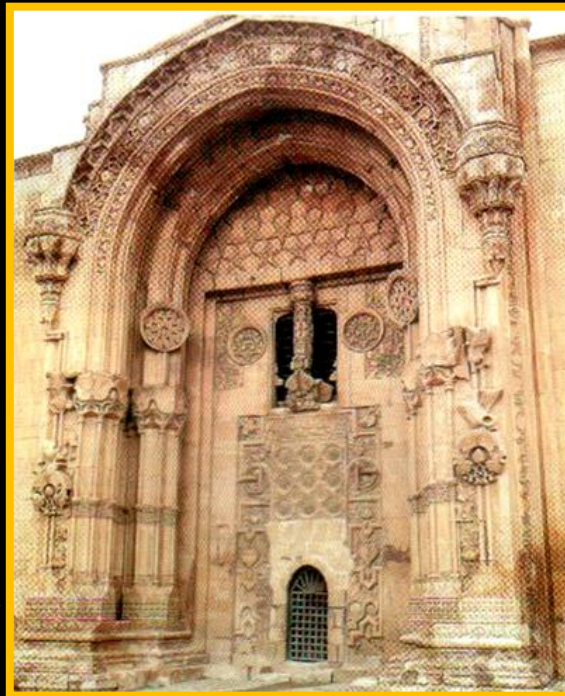
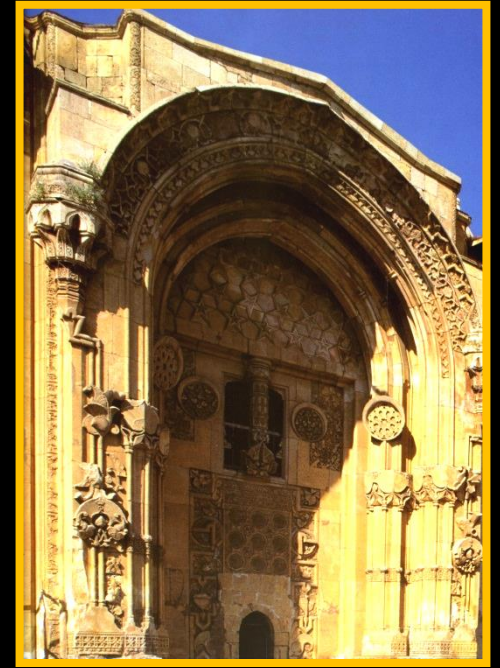
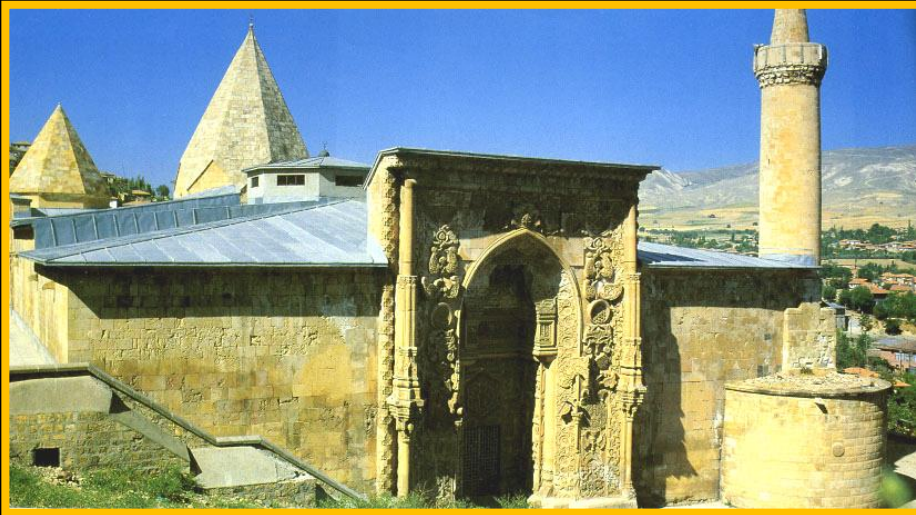
Gök Medrese,
SIVAS-1271.



İnce Minareli Medrese , KONYA -1271



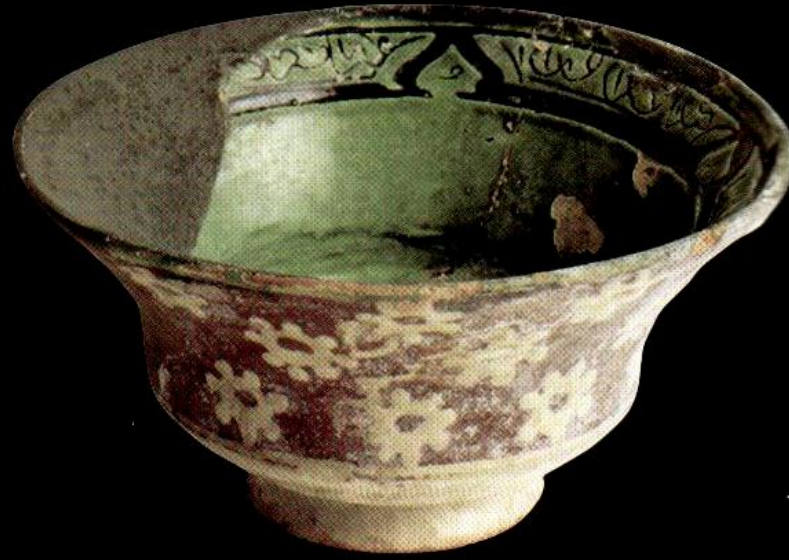
Sultan Han ,AKSARAY -1229



**Divriği Ulu Camii ,
SIVAS-1228.**



Çiniler-13.yüzyıl.



Seramikler- 13.yüzyıl

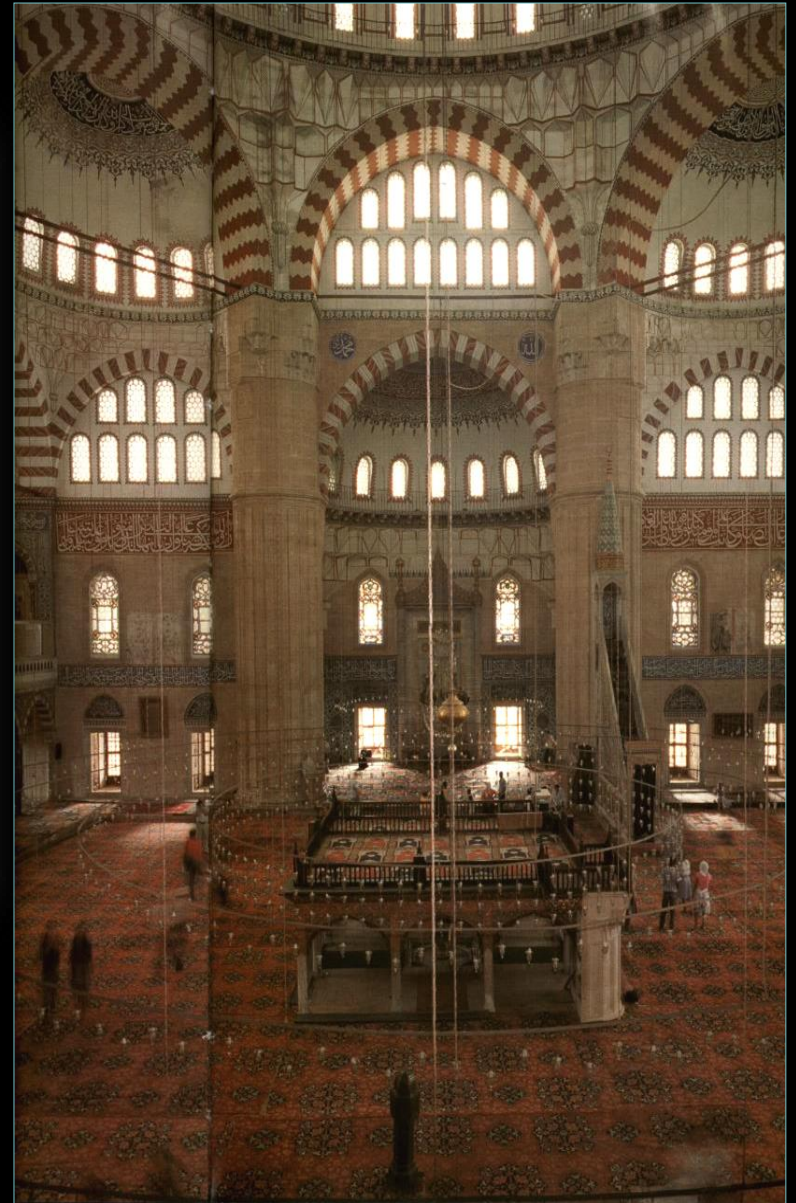
OSMANLI İMPARATORLUĐU, 1299 -1923



Süleymaniye Camii 1550-57.



Selimiye Camii-1575 , EDİRNE

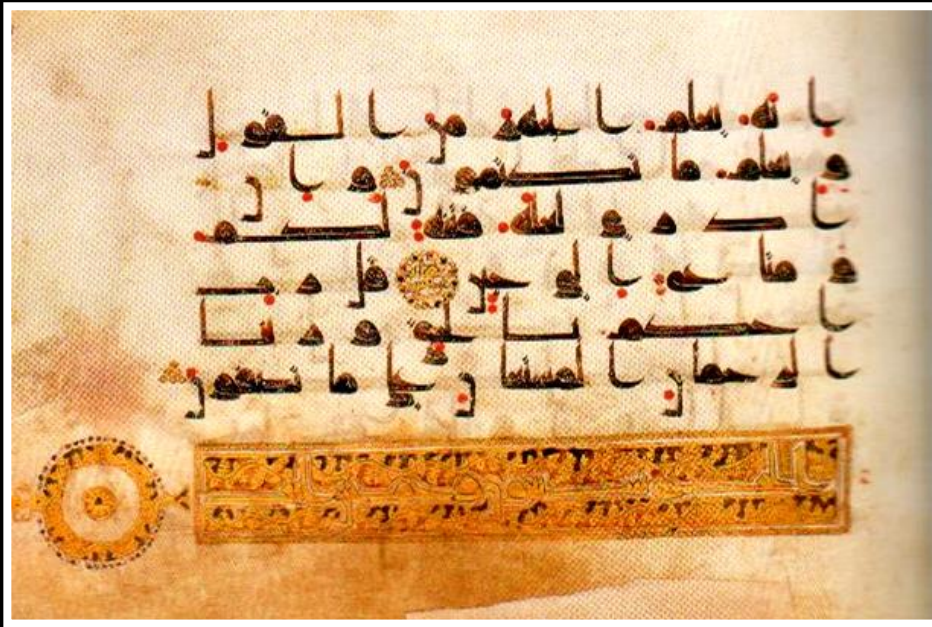


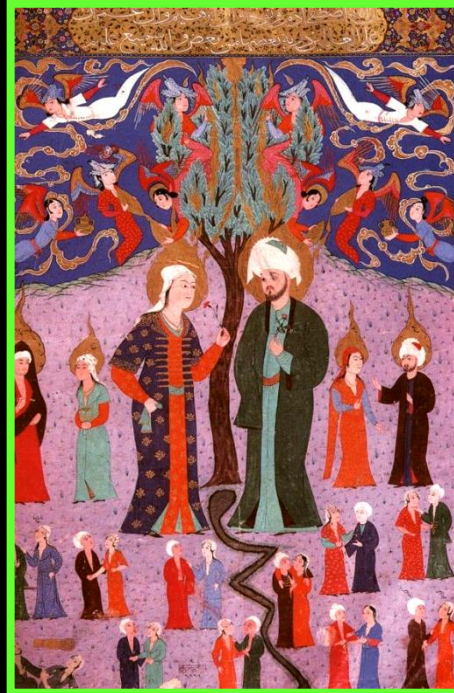




18.Yüzyıl başlarında Ankara'nın genel görüntüsü.
Rijksmuseum - Hollanda.

Kuran-ı Kerim (THE HOLY KORAN)







Atatürk ve Türkiye Cumhuriyeti



BİR VATANIN SAHİBİ OLMANIN YOLU, O TOPRAKLARDA YAŞANMIŞ TARİHİ OLAYLARI BİLMEK, DOĞMUŞ UYGARLIKLARI TANIMAK VE ONLARA SAHİP OLMAKTAN GEÇER.

kültürel zenginliğimizi öğrenmek için

Tanımak

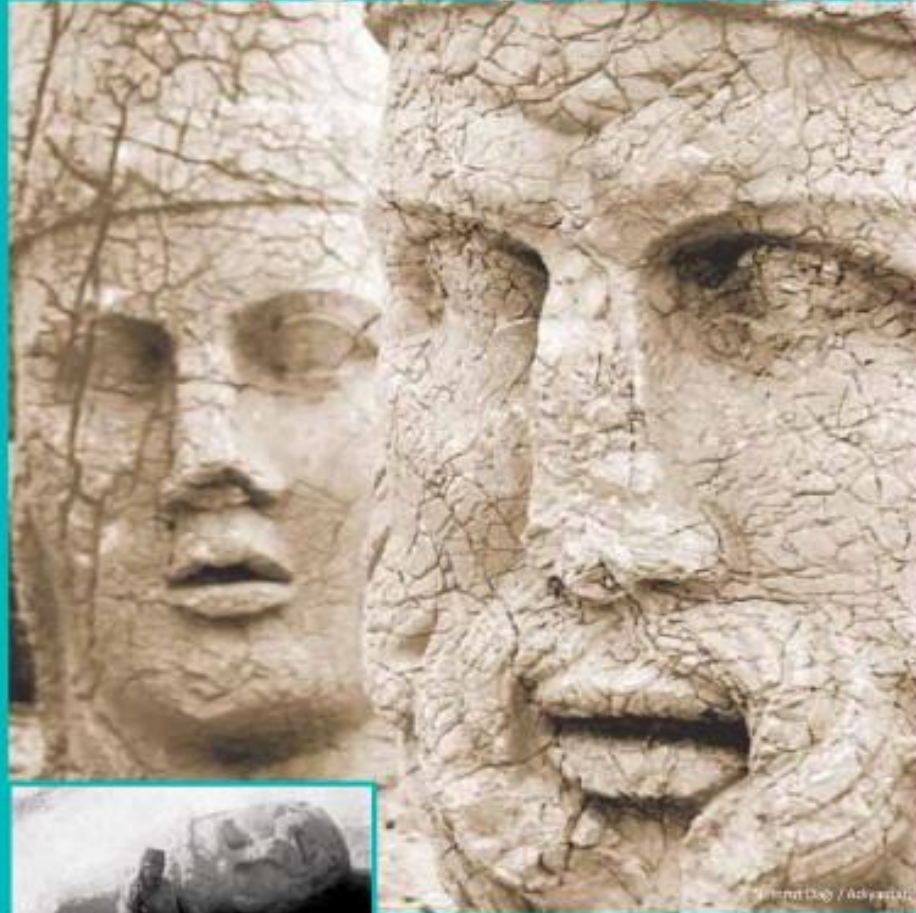
“



İslender Lahdi, Osman Hamdi Bey tarafından 1887 yılında Seydi (Lübnan) yapılan arkeolojik kazılarda bulunmuştur. Lahit üzerinde yapılan araştırmalar sonucunda, eserin orijinal halinin renkli olduğu beklenmiştir.

geçmişe sahip çıkmak için

Korumak



Osman Hamdi Bey'in ilk arkeolojik kazı çalışması.
1883 yılında gerçekleştirdiği Nemrut Dağı Tünelüsü araştırmasında.

























KAYNAKLAR

- Halil Demirdelen kişisel arşivi, Anadolu Medeniyetleri Müzesi uzmanı.
- Anadolu Medeniyetleri Müzesi Katalođu.