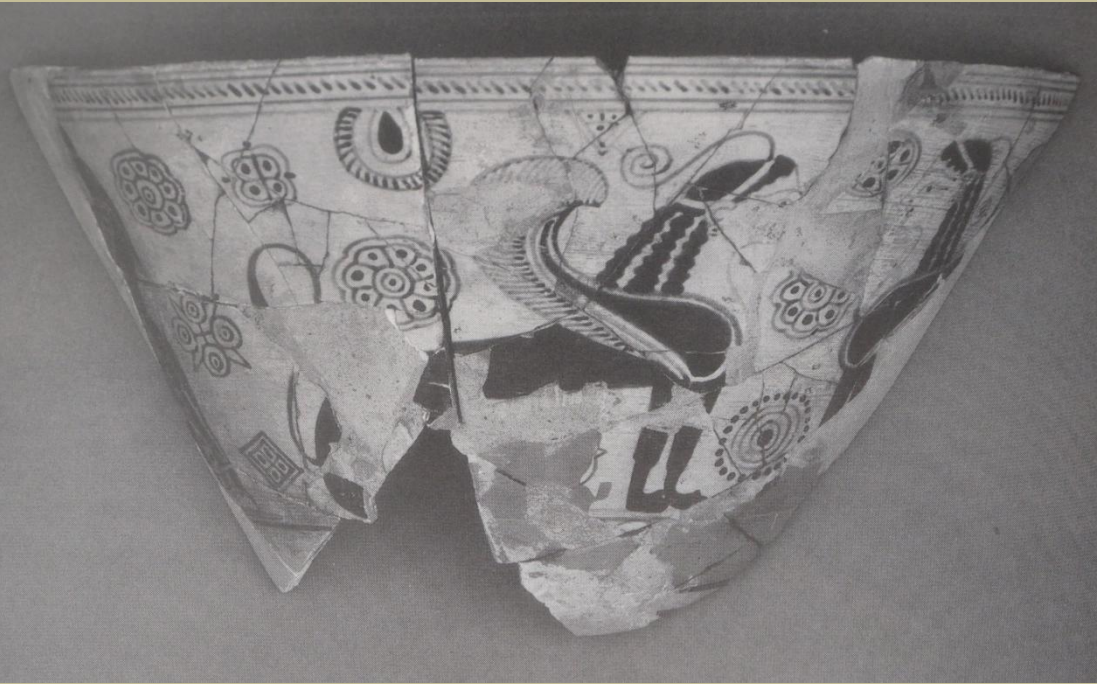


Bu sunum "Orientalizan Dönem Seramiđi" dersi kapsamında kullanılmak üzere eğitim amaçlı hazırlanmıştır. Sunum içinde kullanılan resim, çizim, fotoğraf, harita gibi görseller muhtelif internet kaynaklarından ve kitaplardan temin edilmiştir. Bu imgelerin tamamının yayın hakları, fotoğrafları çeken kişilere aittir; eğitim amaçlı olarak kullanımını uluslararası kanunlarla serbesttir, ancak ticari ve benzeri kullanımları için fotoğraf sahiplerinden izin alınması gerekmektedir.

This presentation was prepared for educational purposes to be used during the lectures of the course "Orientalism Period Ceramic'. The visual material like paintings, drawings, photographs and maps are acquired through various internet resources and different books. All the copyrights of the indicated visual material belong to the related artists, writers and researchers who had conducted these works of art, books and the visual designs. The use of these materials for education purposes are under the protection of international laws, but for commercial uses the necessary permissions should be taken from the copyright holders of the works.

M.Ö. 6.yy.ın ilk çeyreği



546



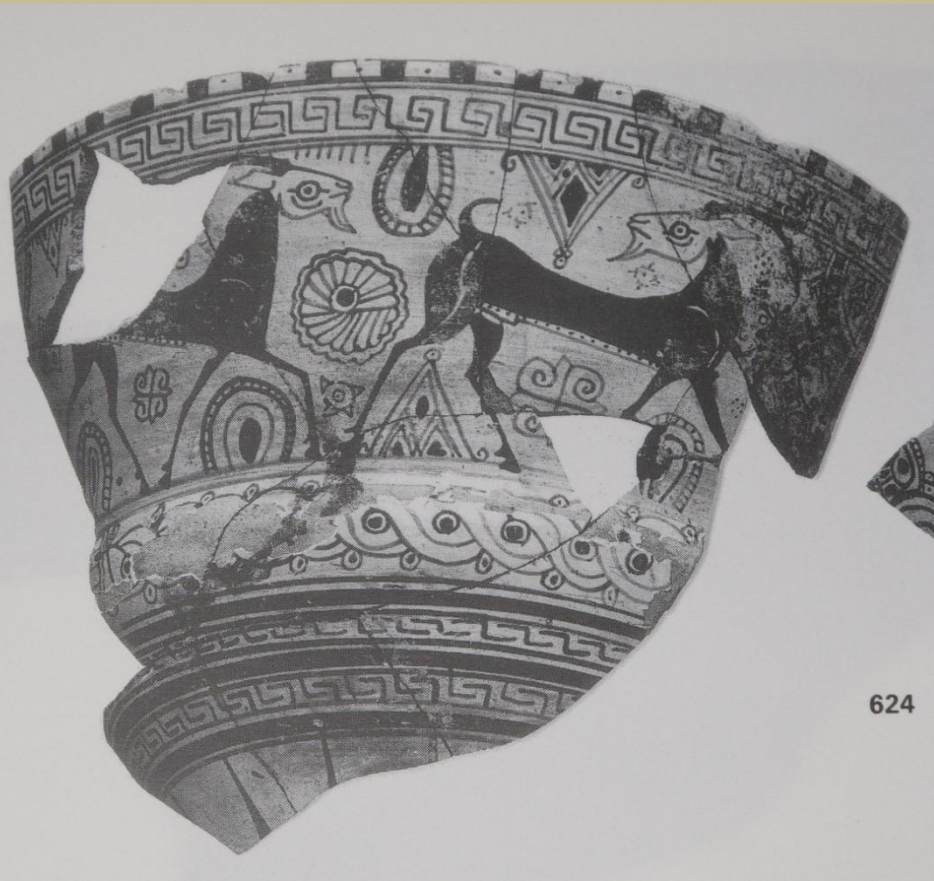
554



555



556



624

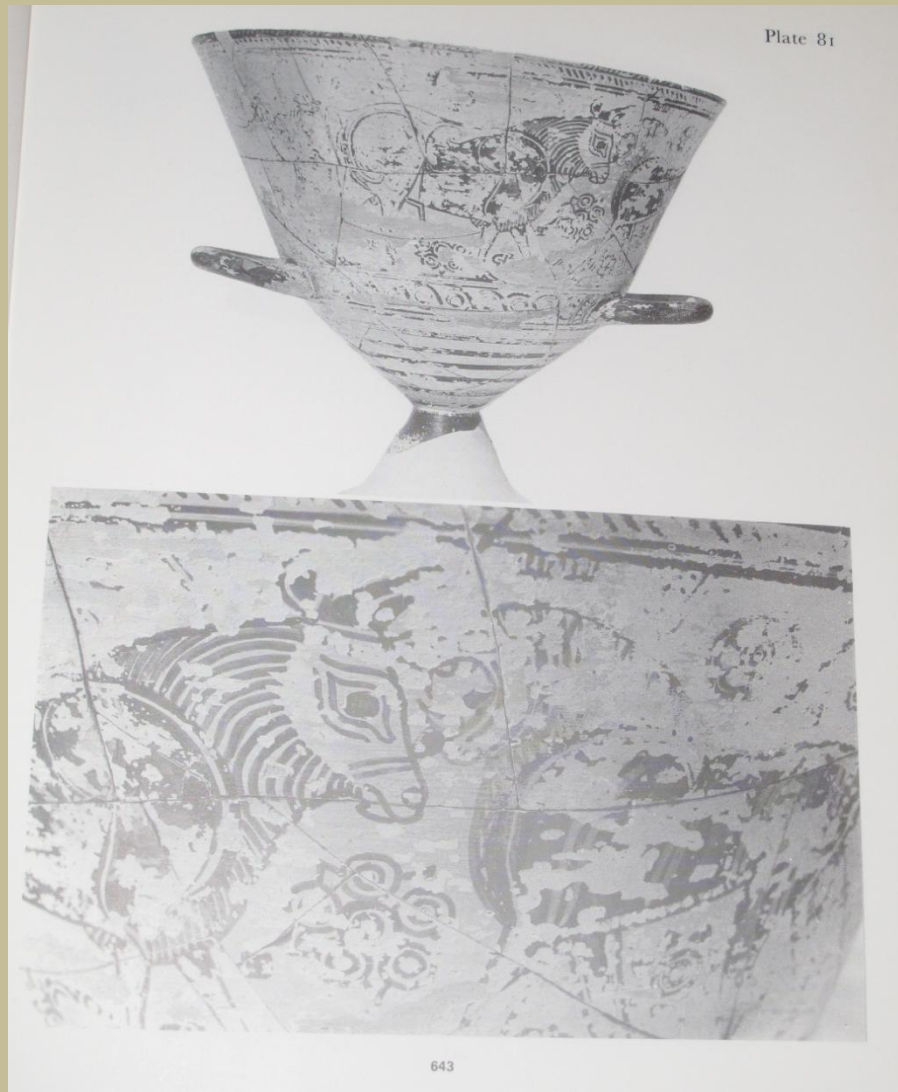


Plate 81

643



643



643

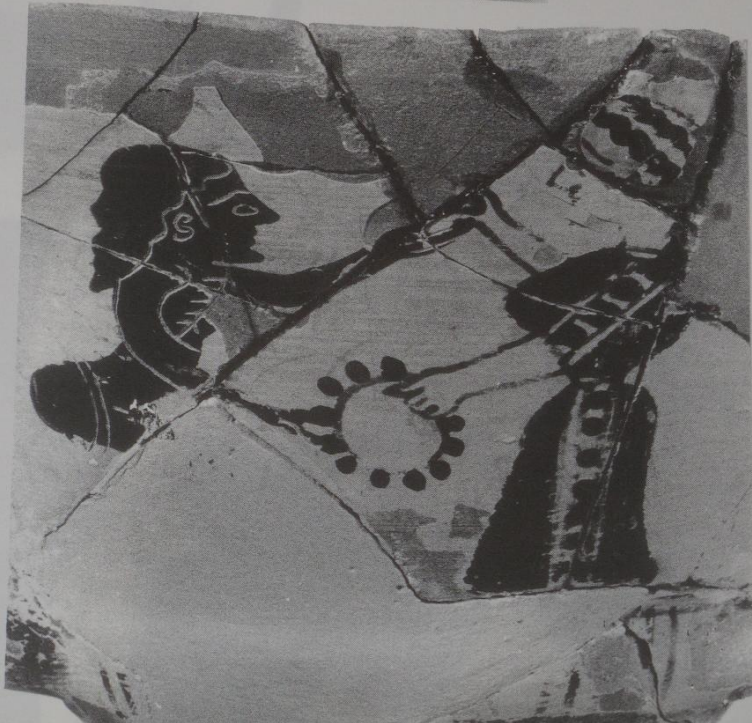


M.Ö. 6.yy.ın ikinci eyređi



Chalice (banquet cup), 6th century BC (ca. 570). Terracotta. From the island of Chios, Ionia, Greece. Collection: Musée du Louvre, Paris, France

Plate



Komastlı Khalisler MÖ 575-540

late 200



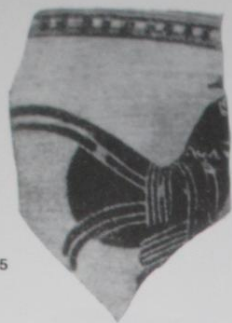
1561



1562

Siyah Figür Hayvanlı Khalisler MÖ 570-540





1605



1606



1613



1611



1615



1616



1617

Geç Siyah Figür Stili MÖ.
550-530

