

Bu sunum "Orientalizan Dönem Seramiđi" dersi kapsamında kullanılmak üzere eğitim amaçlı hazırlanmıştır. Sunum içinde kullanılan resim, çizim, fotoğraf, harita gibi görseller muhtelif internet kaynaklarından ve kitaplardan temin edilmiştir. Bu imgelerin tamamının yayın hakları, fotoğrafları çeken kişilere aittir; eğitim amaçlı olarak kullanımını uluslararası kanunlarla serbesttir, ancak ticari ve benzeri kullanımları için fotoğraf sahiplerinden izin alınması gerekmektedir.

This presentation was prepared for educational purposes to be used during the lectures of the course "Orientalism Period Ceramic'. The visual material like paintings, drawings, photographs and maps are acquired through various internet resources and different books. All the copyrights of the indicated visual material belong to the related artists, writers and researchers who had conducted these works of art, books and the visual designs. The use of these materials for education purposes are under the protection of international laws, but for commercial uses the necessary permissions should be taken from the copyright holders of the works.

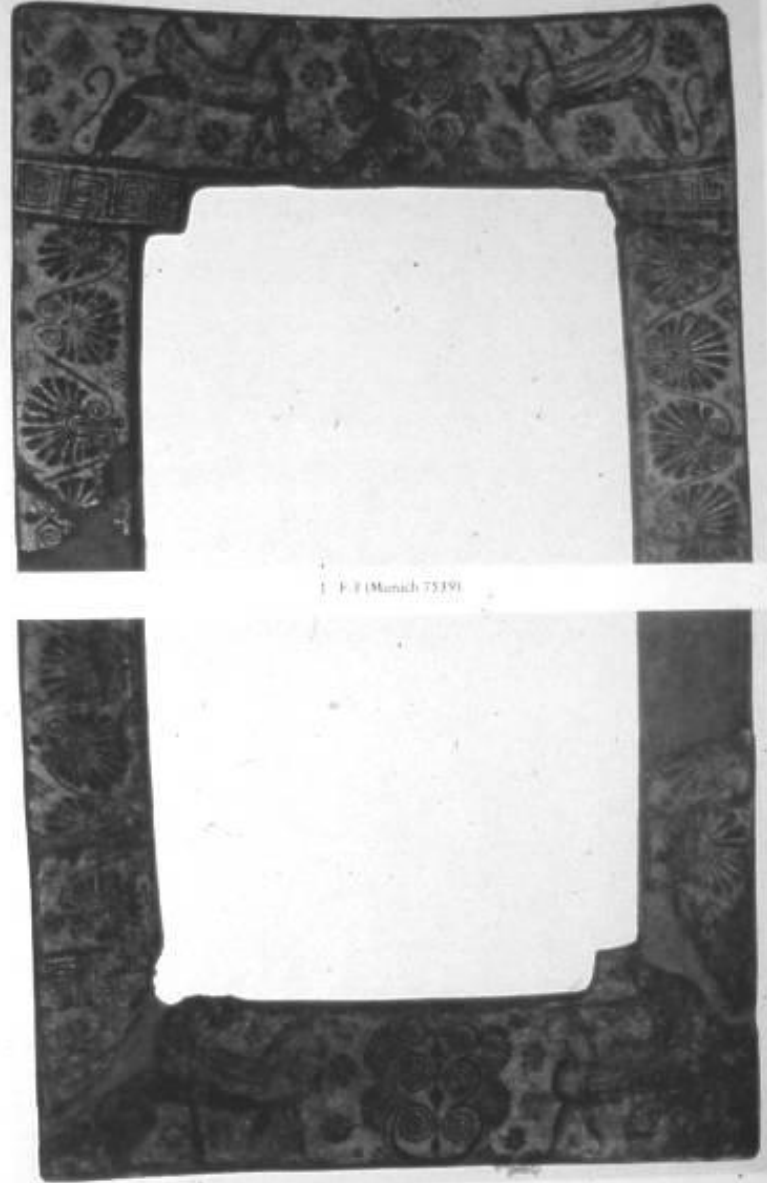
Geç Altıncı yy Lahitleri Grubu: 530-500



1. F. 1 (Geydes 1, 1896/97.)



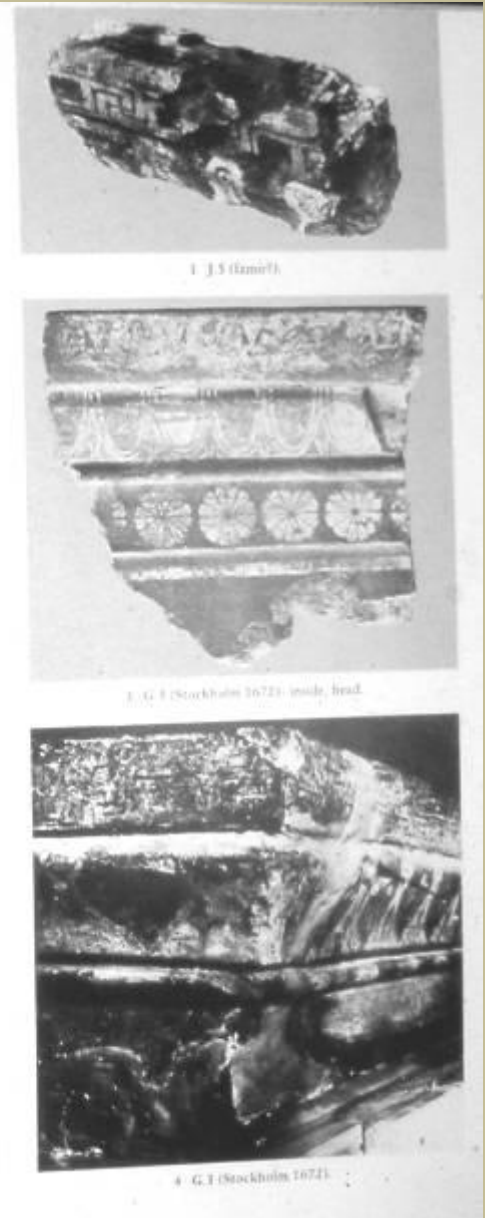
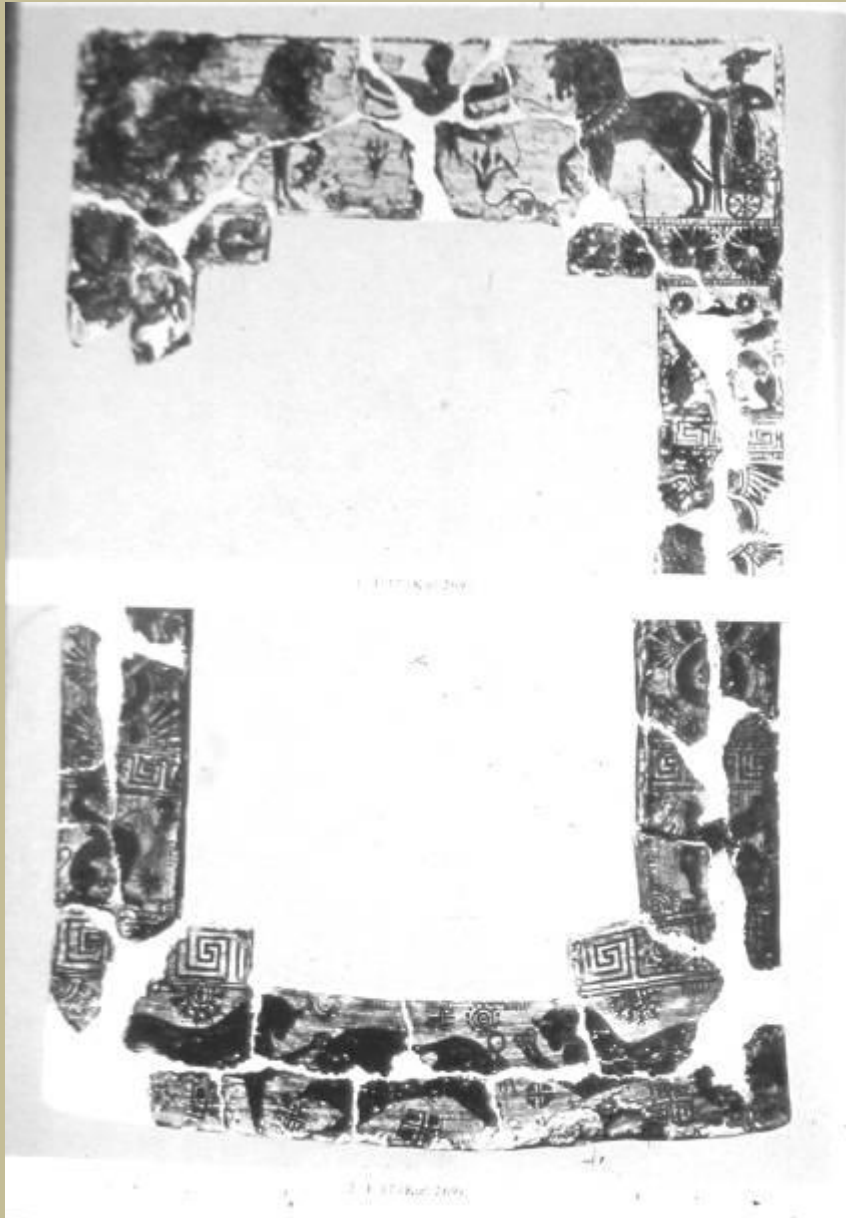
2. F. 1A (once Mackay): semtatuz restorasyon.



1. F. 3 (Munich 75391)

2. F. 3 (Munich 75391)

Albertinum Grubu: 500-470



Albertinum Grubu: 500-470



1 G.2 (Herasol 1426)



2 G.2 (Herasol 1426)



1 G.1 (London 96.6-15.1), lid, left side



2 G.1 (London 96.6-15.1), lid, right side



3 G.1 (London 96.6-15.1), sarcophagus



Albertinum Grubu: 500-470



G.1 (London 96.6-15.1), lid: underside.

Albertinum Grubu: 500-470



1 G.11 (Paris, Louvre CA 1024)



2 G.13 (Paris, Louvre CA 1024)



1 G.14 (Paris, Louvre CA 244a)



2 G.11 (Dario 3493)



3 G.5a (Paris, Louvre CA 6232)

Albertinum Grubu: 500-470



1 G.48 (Paris, Mus. Rodin 423).



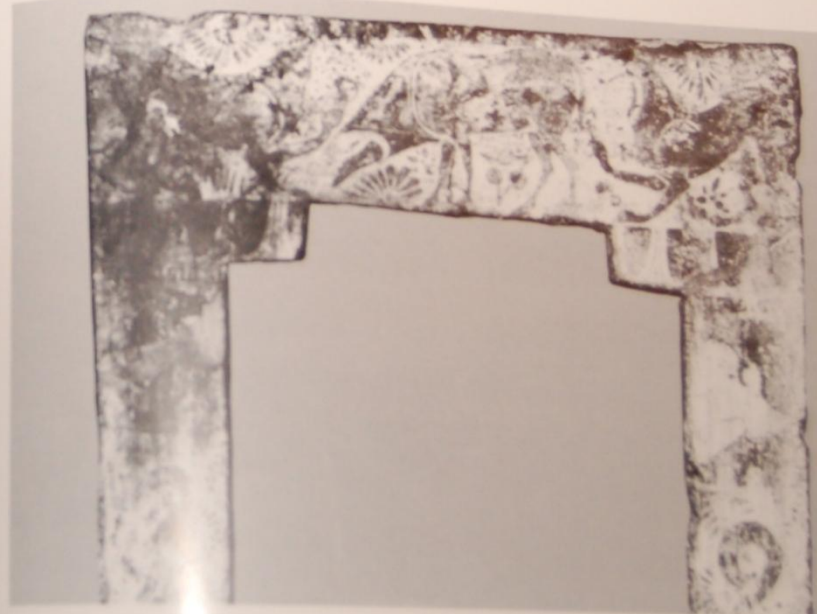
2 G.61 (Izmir?)



3 G.62 (Paris, Mus. Rodin 521).

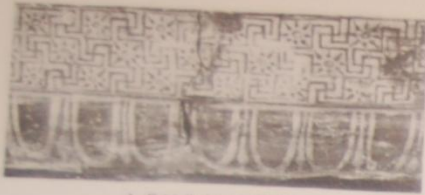


1 G.50 (Copenhagen, Ny Carlsberg 1512A).



2 G.46 (Paris, Louvre CA 1138).

Albertinum Grubu: 500-470



1 G.10 (Leipzig T.3338).



2 G.10 (Leipzig T.3338).



3 G.12 (Leipzig T.3340).



4 G.12 (Leipzig T.3340).



5 G.55 (Paris, Mus. Rodin 439).



6 G.55 (Paris, Mus. Rodin 439).



7 G.41B (Paris, Mus. Rodin P.55).



8 G.21 (New York 21.169.1).



1 H.2 (Rhodes 15330).



2 H.5 (Cambridge GR.7.1902).



3 H.3 (Leipzig T.3339).



4 H.3 (Leipzig T.3339).



5 H.1 (Polyiyo).



6 H.1 (Polyiyo).

Hopkins Ressamı:480-460

PLATE 94



1 H.1 (Polyiro).



2 H.1 (Polyiro)

PLATE 95



1 H.3 (Leipzig T.3339).



2 H.3 (Leipzig T.3339).

Hopkins Ressamı:480-460



1 H.4 (London 63.3-30.2).



1 H.5 (Cambridge GR.7.1902).



2 H.4 (London 63.3-30.2).



2 H.5 (Cambridge GR.7.1902).

MÖ 5.yy Lahit Grubu: 500-420



1 J.7 (London 1902.10-12.1).



2 J.7 (London 1902.10-12.1).



1 J.9 (Leyden 1.1902/1.19).



2 J.9 (Leyden 1.1902/1.19).