

©COPYRIGHT

FK000000000000001ATKÇ

YKY

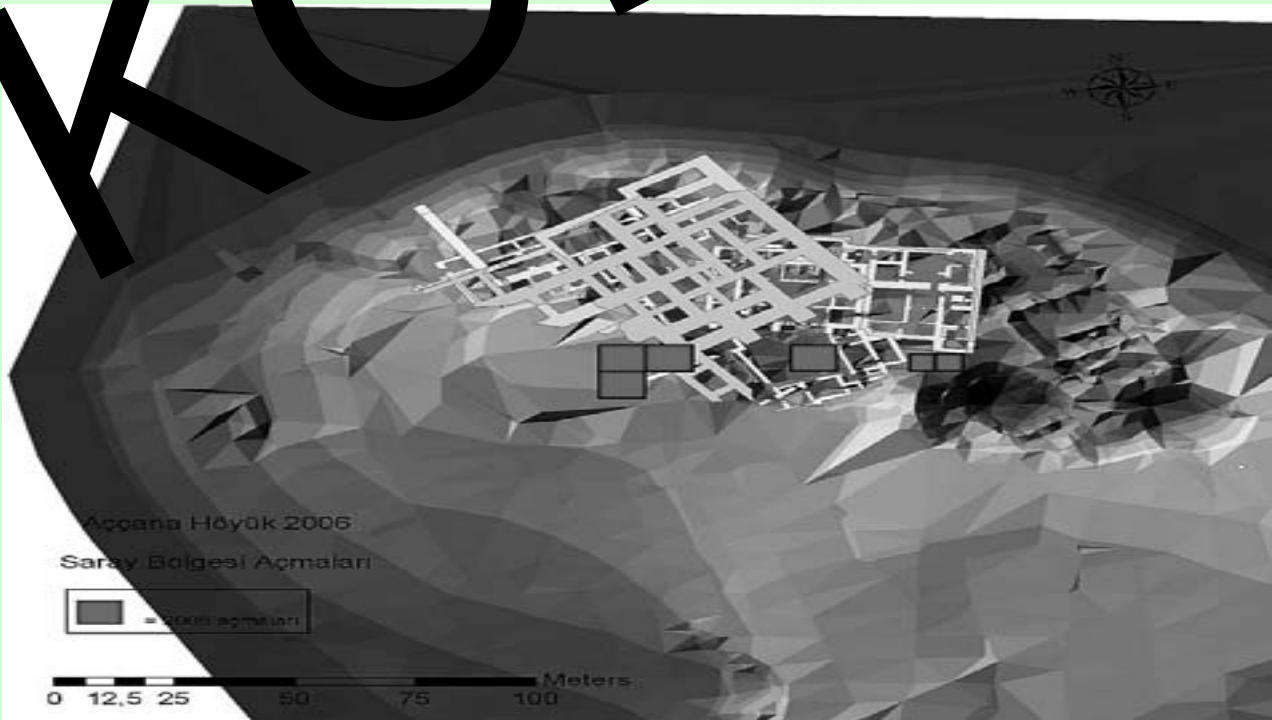
KYK

KO

RU

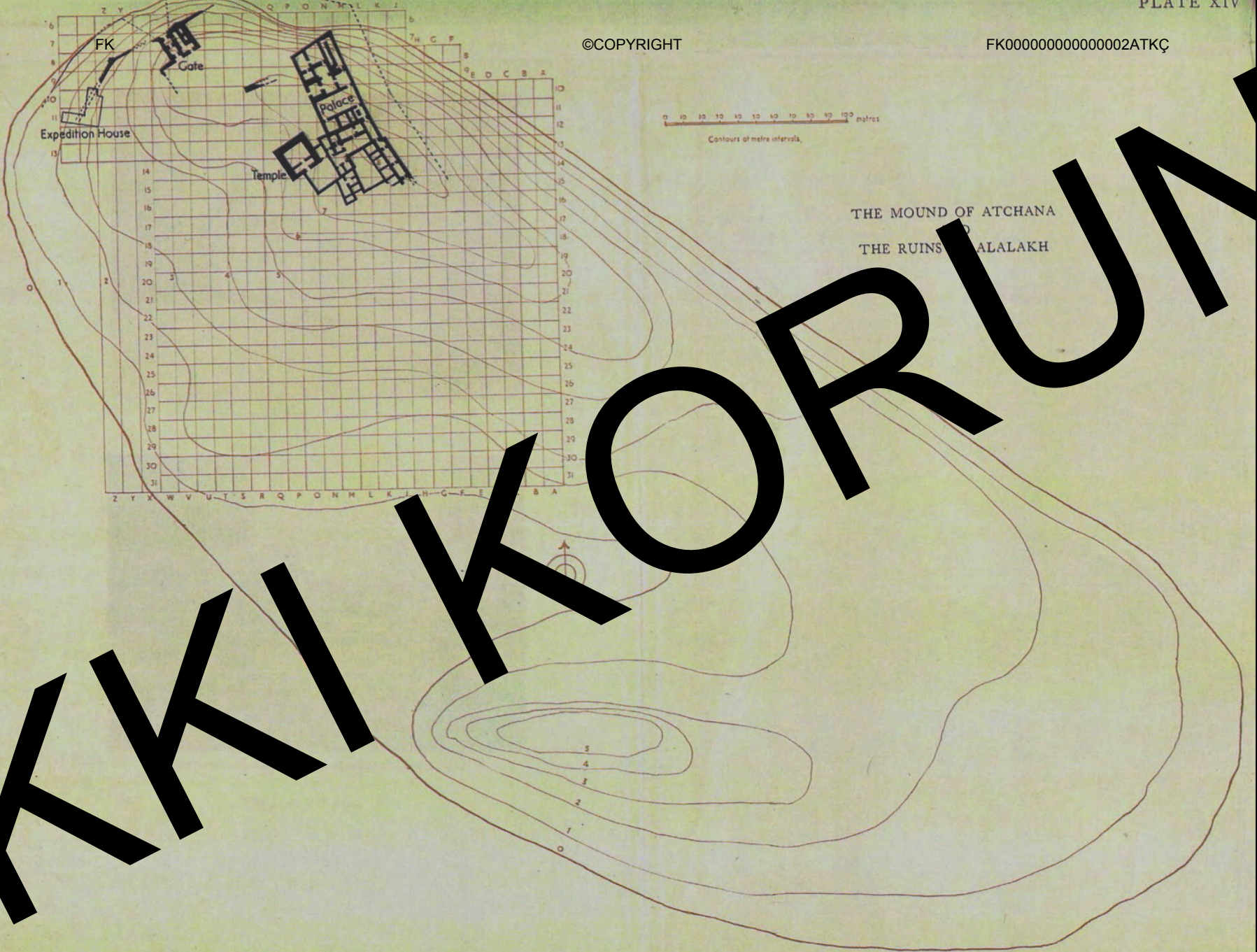
UN

N



©COPYRIGHT

FK00000000000002ATKÇ



THE MOUND OF ATCHANA
THE RUINS ALALAKH

KIKIKORUN

The buildings of Level VII. General Plan

TEL ATCHANA 1939-46
 PLAN OF THE PALACE OF KING YARIM-LIM

©COF

0 1 2 3 4 5 6 7 8 9 10 11 12 METRES

LEVEL VII

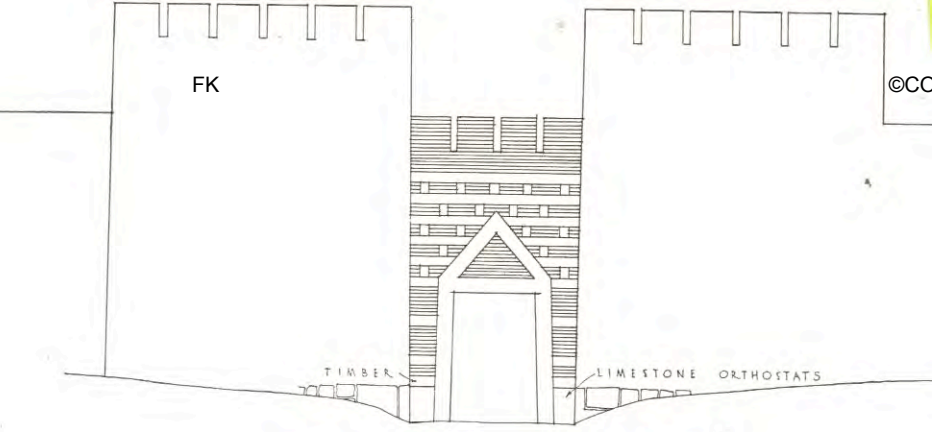


...lations of ... in the ... of O temple. ... in background ... p. 89

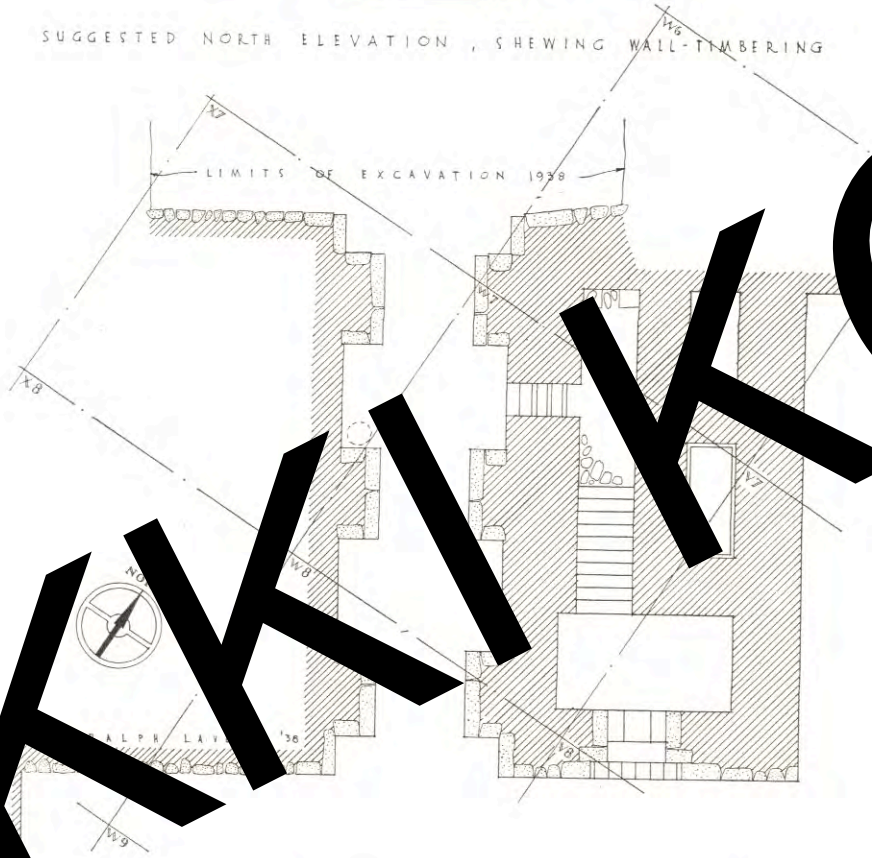
Basalt tables of offering from the temples ... Levels I and O ... p. 89



c. Yarim-Lim's Palace: the entrance-room (7) from the outside ... p. 92



SUGGESTED NORTH ELEVATION, SHEWING WALL-TIMBERING



TAL ATCHANA 1938
EXISTING REMAINS OF CITY GATE, LEVEL 7

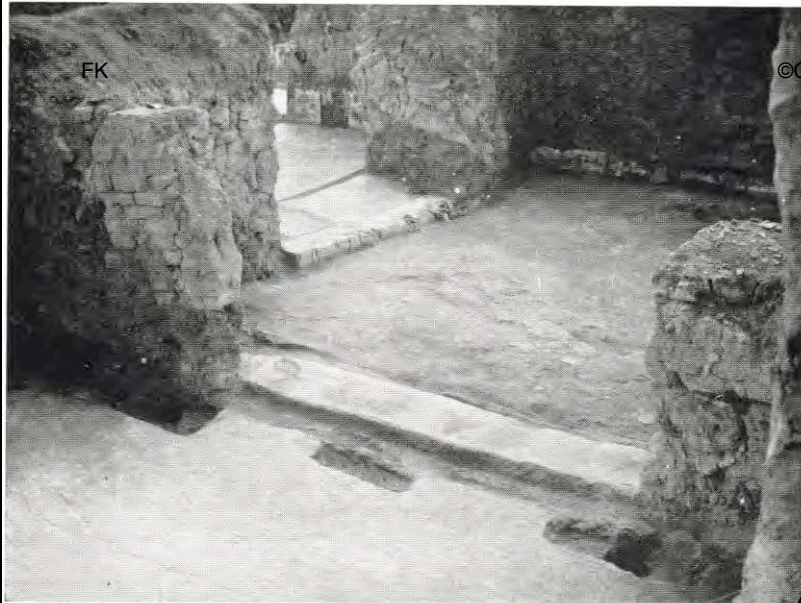


General view of the gateway from the inside



b. The guard chamber
p. 148

The Level VII city gate



FK

©C... HT

FK0000000000000005ATKC

a. The cement threshold between rooms 5 and 5A
p. 100



a. Room 12 and 11; elephant tusk lies on the floor



b. View from the courtyard across room 8 to the staircase
p. 101

The Level VII palace



b. Room 11; on the floor are tablets and elephants' tusks, the latter being waxed for removal by Alawi, junior foreman

p. 102

The Level VII palace



FK

a. General view from room 3 through room 8 and across the courtyard (9) to the stair-chamber (10)

p. 101



Room 10, the staircase: the first flight of the winding staircase and the steps going straight on to the passage (14)

p. 102

The Level VII palace



FK000000000000006ATKÇ

a. Room 10, looking down on the first and second flights of the newel staircase

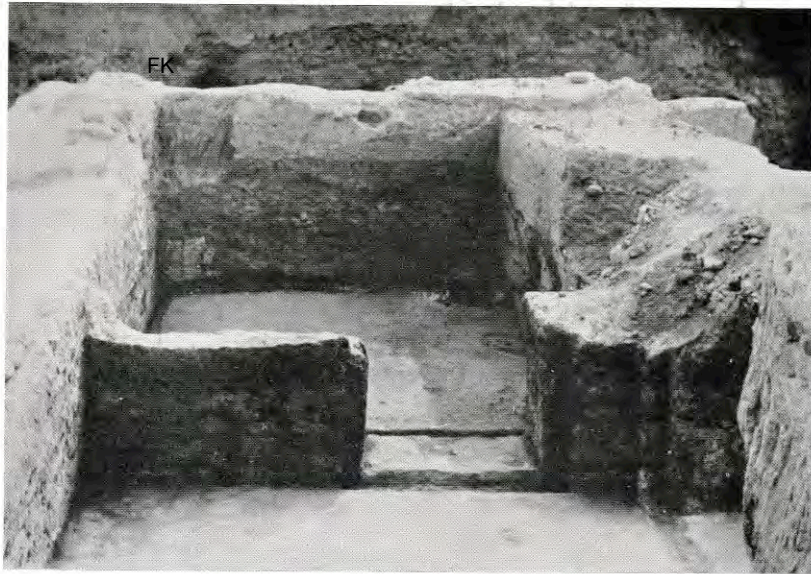
p. 102



b. The staircase wall (room 3) showing vitrified brickwork: on the lower plaster is visible the finger-print keying for the *intonaco*

p. 99

The Level VII palace



a. Room 15, seen from room 16; in the background, the bath and drain in-take
p. 103

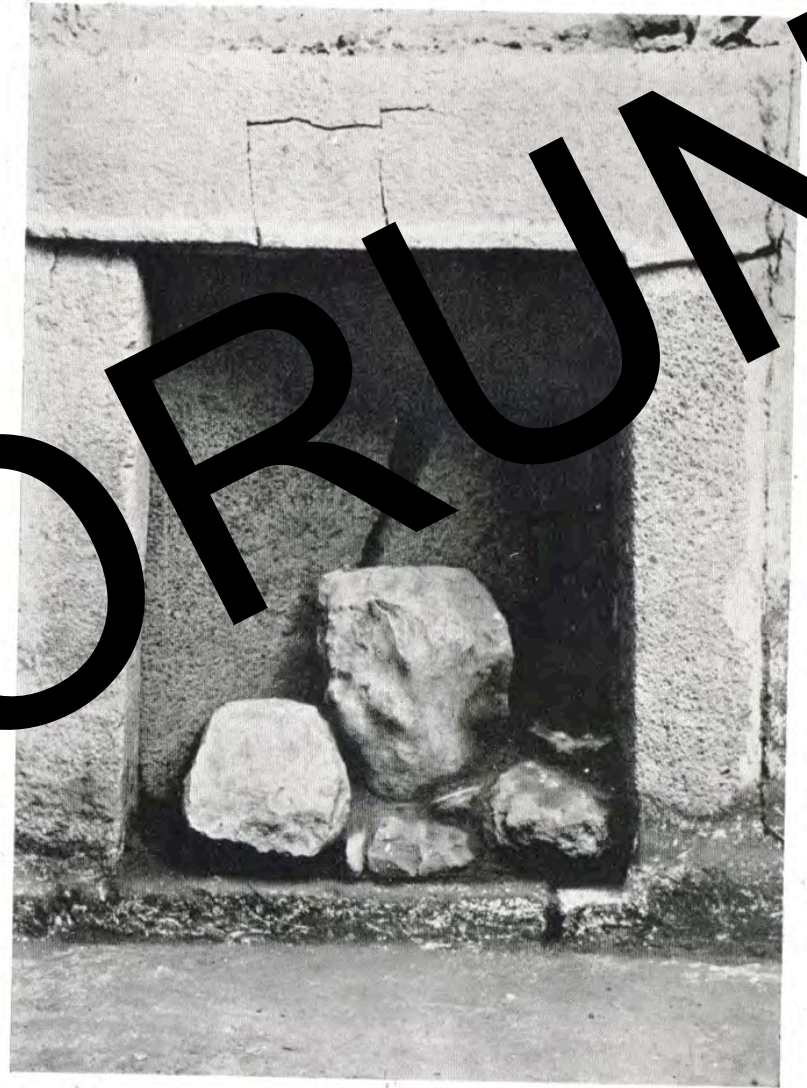


Room 18, showing the sunken tank, washing-basin, and drain. The pot in the foreground belongs to Level VI-V
p. 103

The Level VII palace



The staircase and shaft below room 17



b. The stone doorway of the shaft blocked by boulders

FK

©COPYRIGHT



a. The shaft (17), showing burnt bones and stone and clay vases in the NE. corner
p. 96



b. The shaft (17), showing the four bodies in a box
p. 96

The Level VII palace

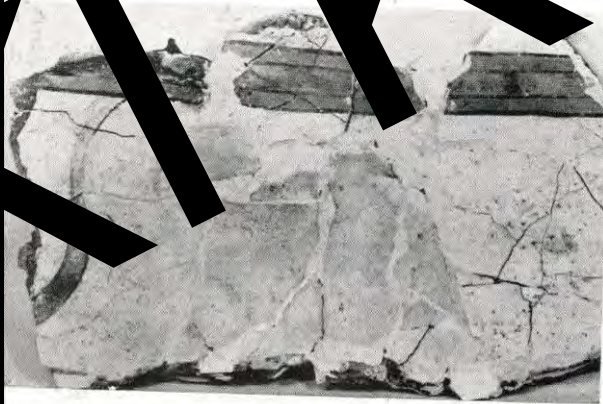


a. The foundations of the NE. corner cut down into room 2 of the Level VII palace

p. 112



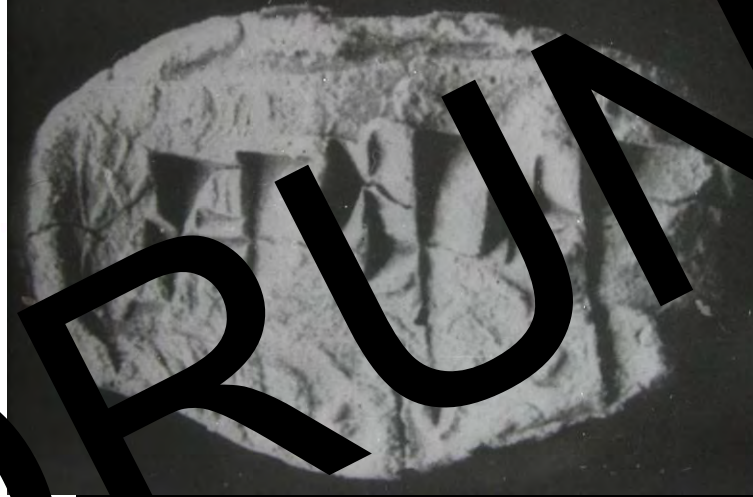
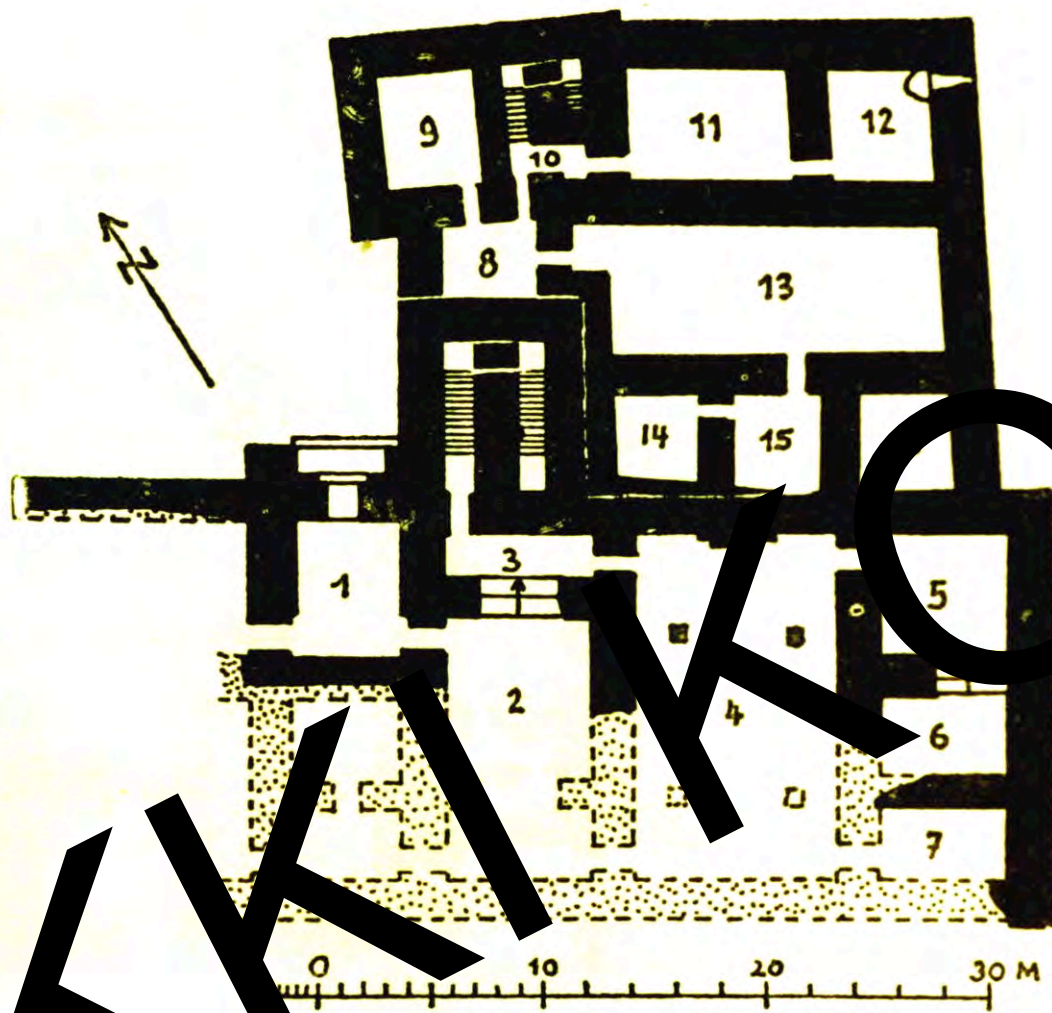
a. Naturalistic scene



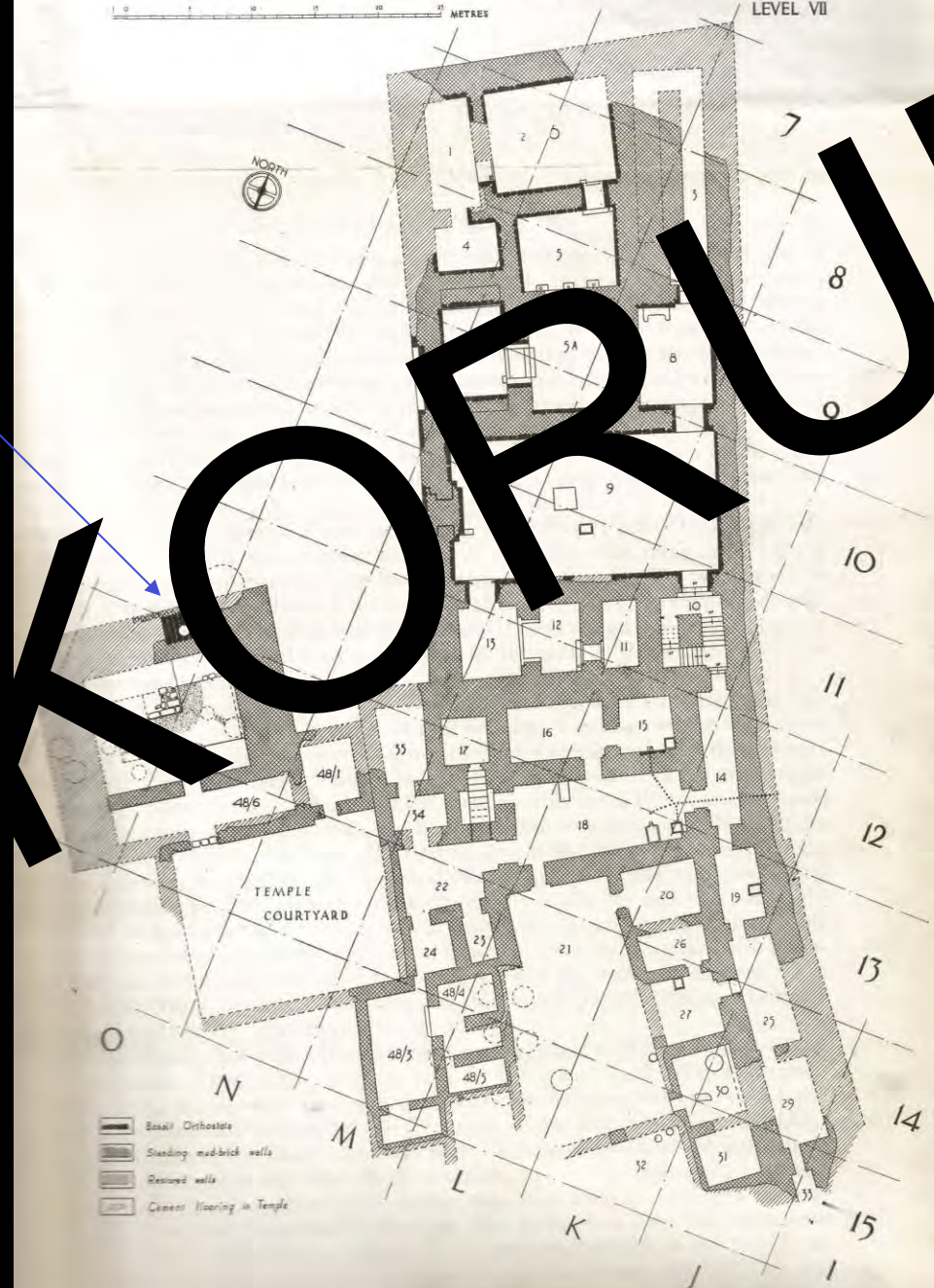
b. Frieze with bull's horn

Fragments of fresco from Level VII

Alalah VII. kat sarayı duvar resmi parçaları.



Ibladu' nun mühür
baskısı



Alalah VII Mabedi



a. Level VII temple; general view looking NE., showing the altar, the troughs or boxes under the benches, and rubbish-pits of Level VI



yarım- Lim' in dioritten yapılmış heykel başı